

Prescription for Hope

Hospital-Based Violence Intervention

★ Smith Level I Shock Trauma Center at Sidney and Lois Eskenazi Hospital

★ 2009

★ Intentional Trauma

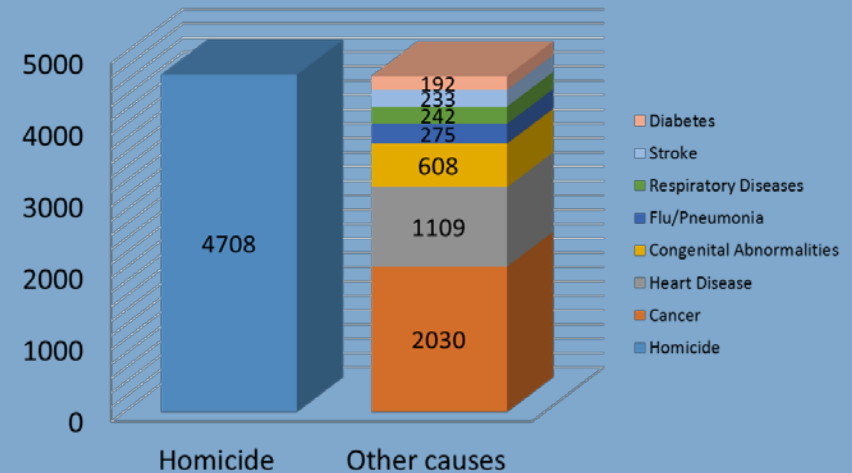
- GSW
 - 7% vs. 35%
- Stabbing
- Assault



Prescription for Hope

Hospital-Based Violence Intervention

★ More youth age 10-24 die from Homicide than from the next seven leading causes of death



2011 fatalities; Web-based Injury Statistics Query and Reporting System (WISQARS)



Prescription for Hope

Hospital-Based Violence Intervention

- Patients with repeat presentations for new injuries
- Medical costs
 - Average 2 day ICU stay for a GSW with a single surgery - >\$100,000
- Rates as high as 55%
 - Eskenazi 30.8% (early 2000)



Prescription for Hope

Hospital-Based Violence Intervention

- Goals

- Reduce violent injury recidivism and readmission of participants to the Smith Level I Shock Trauma Center.
- Prevent first time violent injury and criminal activity in high-risk youth referred by community partners.
- Reduce crime and arrest in enrolled youth participants.
- Mentor and educate participants to develop effective life skills for positive citizenship behavior .
- Provide community education and information on violence and crime prevention to promote safer homes and neighborhoods.

- Goals cont.

- Accomplish reduced recidivism through partnerships with a network of community agencies and program partners.
- Provide accessible programs and opportunities for youth and family assistance and personal development.



Prescription for Hope

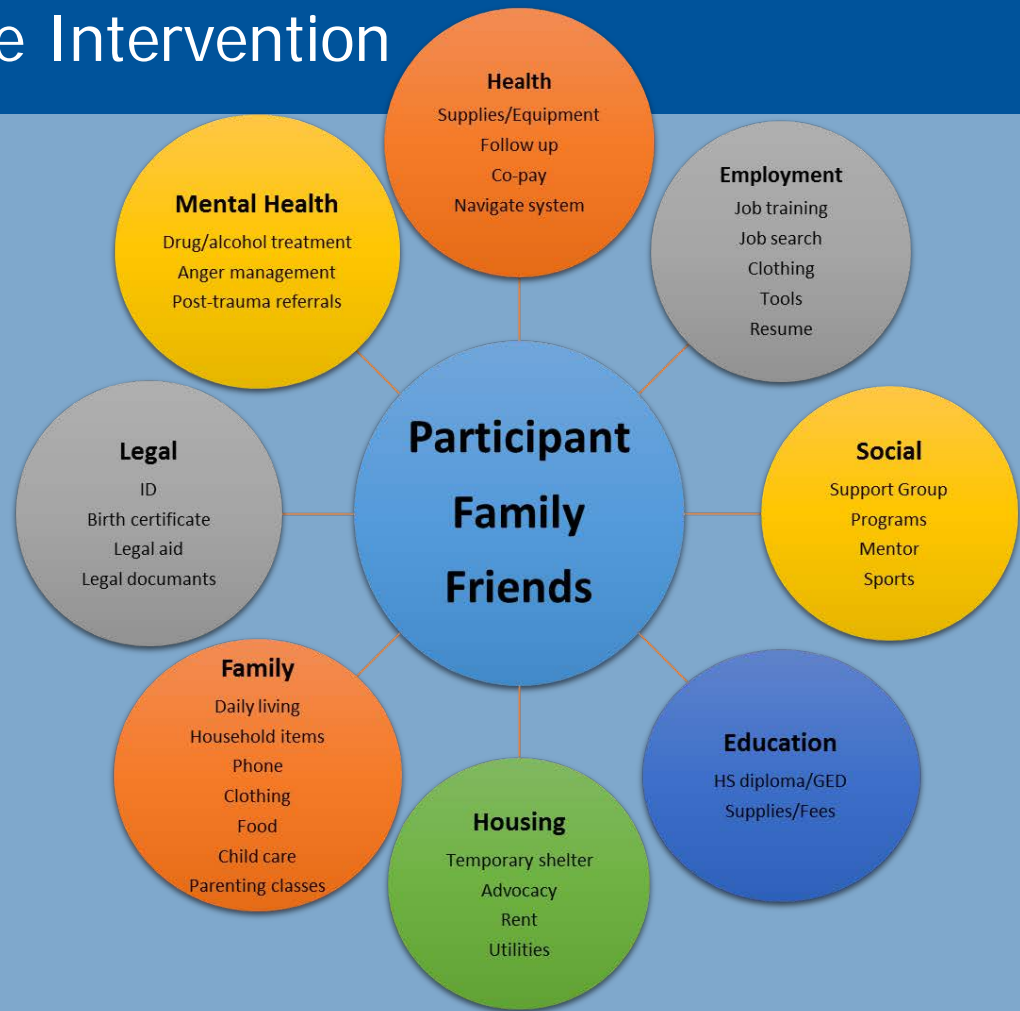
Hospital-Based Violence Intervention

- Personal/Family empowerment
- Wraparound services
- Links to community programs
- Risk/Protective factors
 - Intensive case management



Prescription for Hope

Hospital-Based Violence Intervention



Prescription for Hope

Hospital-Based Violence Intervention

- Treatment for
 - Addiction
 - Mental health
- Education
 - GED
 - Return to school
- Employment
 - Resume
 - Job training
- Emotional factors
 - Anger/Conflict/Relationship
- Primary care
 - Insurance



Prescription for Hope

Hospital-Based Violence Intervention

- Medical recidivism rate decrease
 - 30.8% to 4.6%
- Treated
 - 2009-2012 257 participants
- Current caseload
 - National average is 20
 - Maintain 20-25 based on acuity

