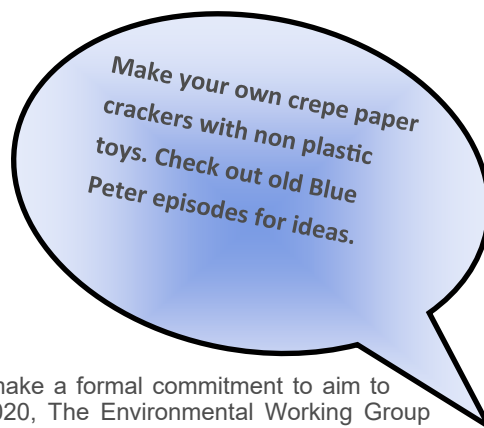


PLASTIC NEWS

Plastic Reduction Newsletter—Winter 2018



In this issue:

- Introduction
- Survey
- Successes so far
- Case study
- Tips & hints
- Feedback & suggestions

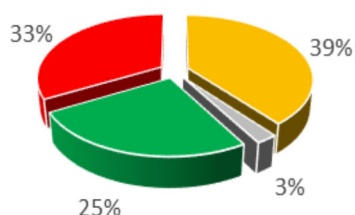
Introduction

In March, the Lighthouse Board resolved to make a formal commitment to aim to stop producing avoidable plastic waste by 2020, The Environmental Working Group (EWG) were tasked with taking this commitment forward. The Sub-Working Group on the Use of Plastics within Trinity House was formed in July 2018 and has since met on three occasions. The group is made up of representatives from various departments. Minutes of its meeting can be found under the 'meetings' page on desksite / worksite.

The work of the group is fed back to the EWG on a quarterly basis and reported to the Executive Committee. The group are keen for colleagues like you to be part of this commitment and have decided to produce a newsletter to promote the work taking place and to encourage feedback and suggestions. We hope you enjoy this first edition.

Survey

RAG Rating Dec 2018



Thank you very much to all of those who filled out the plastics survey.

Results of the survey identified the following:

- 257 entries across the organisation identifying use of plastics
- 155 of these entries were classed as consumables (the bulk of plastic use)
- 6 Items have been actioned and completed since the sub-group was established

We have established a RAG (Red, Amber, Green) rating for all items to identify which have alternatives and can be quickly addressed (green), items with possible alternatives to be investigated (amber) and items which do not have alternatives currently available (red). A handful of items have not yet been given a rating (grey). You can find the full survey results on desksite, document number: 385460.

Successes so far

Plastic bin liners

In September 2018 the bin liners from the small desk bins in the Harwich Offices were removed. This initiative saves over 500 single-use plastic bin liners a week, so far that's approximately 7,500 bin liners saved!

Office coffee machine sachets

This year, the sachet Coffee Machine from the Harwich office has been removed, by doing this, we have saved approximately 5000 single use plastic sachets a year from going into our waste stream. At 1.2kg per 100, that's over half a tonne of waste.

Plastic cups

As of October 2018, we ceased ordering single use plastic cups for the water coolers in the Harwich Office. Replacement reusable products are being investigated – watch this space.



25 cups per week (above)
100 cups per 4 weeks
1300 cups per year
or ONE GLASS

Successes so far cont....

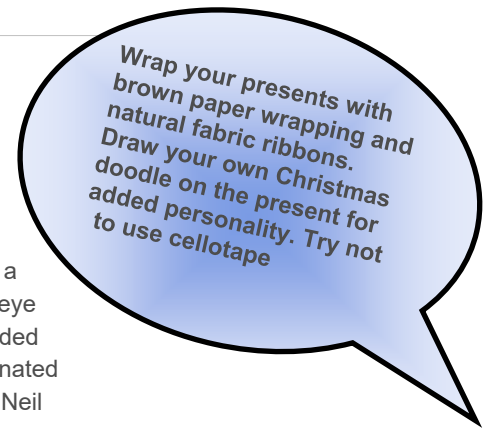
Colchester Zoo

I dare say many of you have visited Colchester Zoo at some point over the years. It's a great place for animal lovers and a day out with the kids. Next time you visit keep an eye out in the monkey enclosures for a little piece of our ships. THV Galatea recently needed to dispose of some old mooring lines and instead of throwing them in the bin have donated them to the zoo to be used in the monkey enclosures. Many thanks to Ryan Poulton, Neil Jones and Nichole Lambert-Kelly for making this happen.



Colchester Zoo are also working hard to go Green and like us, use CSH Environmental Ltd for their waste. For info on 'the green zoo' click on the below link:

<https://www.colchester-zoo.com/conservation/the-green-zoo>



Case study — CSH Environmental Ltd

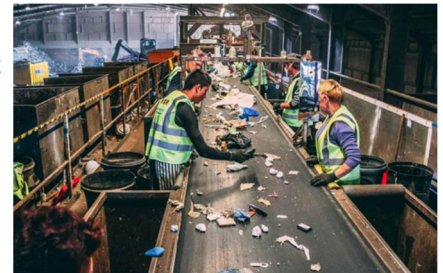
Where does our waste go?....

Trinity House's principal waste contractor is CSH Environmental Ltd, who have been working with us for over 15 years. CSH handle over 50,000 tonnes of waste per year through skip hire, wheelie bin hire and trade waste collection. They have the most advanced recycling centre in the region.

Members of the EWG visited CSH at Colchester in November as part of an audit to see where our waste goes and to understand the challenges and opportunities in recycling, it was an interesting visit and all were impressed by the work and commitment that CSH put into recycling and trying to avoid landfill.

So what happens to our waste?....

Our waste is collected and delivered to CSH's recycling centre, where it is mechanically sorted and loaded onto a conveyor belt. The waste is separated into different recyclables, such as; metal, wood, cardboard, clear plastics, other plastics and paper.



Did you know?....

- CSH diverts around 98% of waste collected away from landfill
- Since January 2018, 208 tonnes of plastic bottles and cans have been recycled by CSH

For more facts, figures and videos please visit:

<http://www.cshenvironmental.co.uk/>

Feedback & Suggestions

Did you know that the EWG run an incentive scheme and that a £25 Love2Shop voucher is up for grabs each quarter?

If you have any suggestions on how Trinity House could reduce avoidable plastic waste or any other ways to improve our environmental performance, please submit your suggestion for your chance of winning.

We'd love to hear your feedback about the newsletter and the work we're doing....

Please email suggestions and feedback to the group chair: Thomas.Arculus@this.org