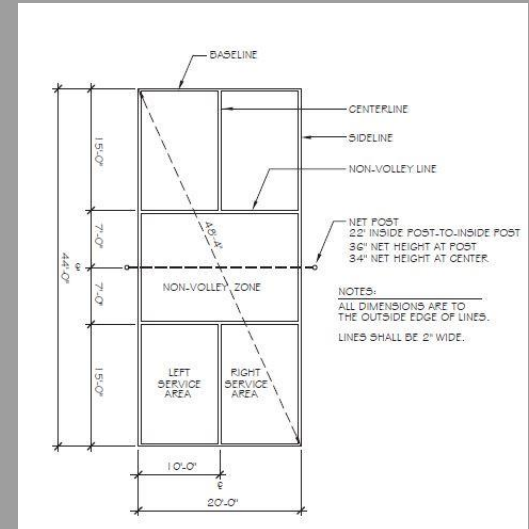


Pickleball - Construction Design Considerations

Sean Larsen, CTCB
Mike Mehaffey, CTCB, CTB

...



Looking Forward

- ❖ Design
- ❖ Construction Methods
- ❖ Involving Pros and Community in Planning
- ❖ Repurposing Existing Courts

Design Considerations

➤ Location

- Is the area suitable for the required amount of courts?
- Is the area runoff drainage good or can it be managed?
- Is the grade flat enough or can it be balanced?
 - Are retaining walls needed?

➤ Orientation - North to South if Possible

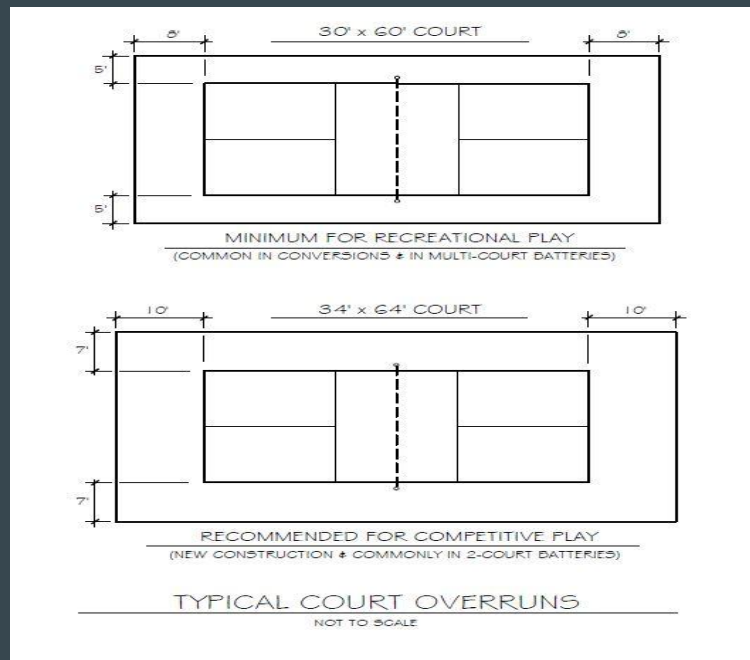
- Some backyards require East to West

➤ Access to Parking and Restrooms

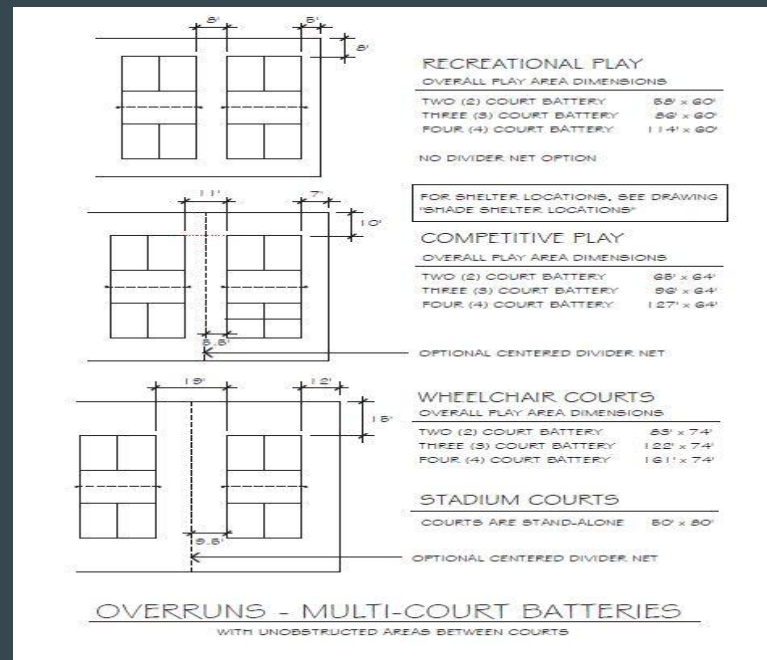
- Parks are a great location due to existing parking lots and restrooms.
- Area required for new pickleball facility locations

Court Sizes

➤ Single Courts

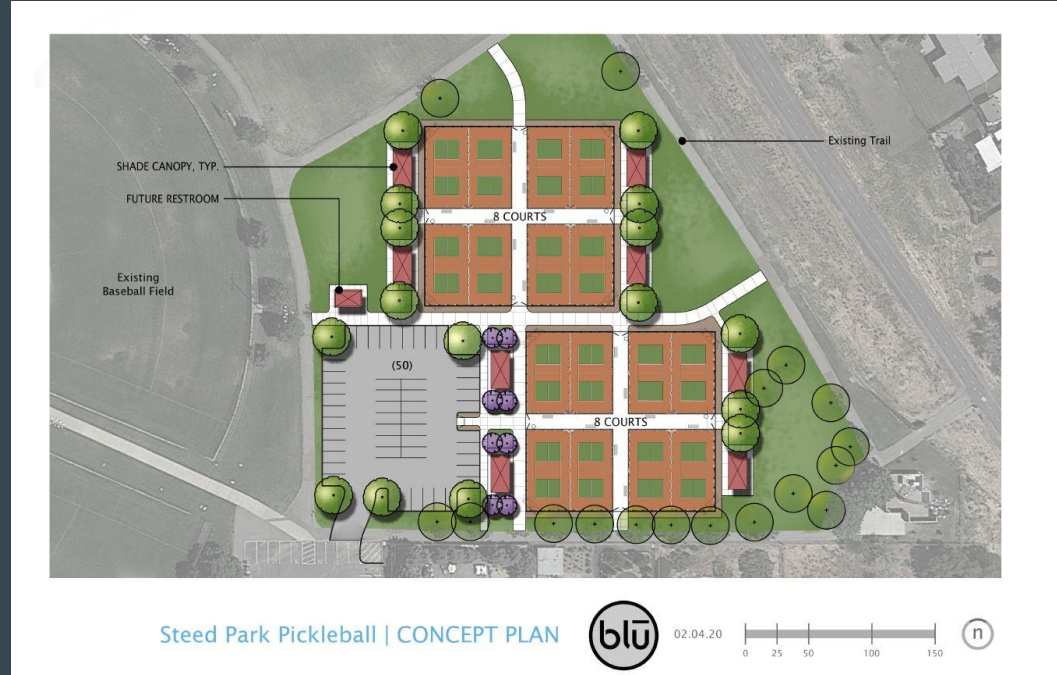


➤ Multiple Courts

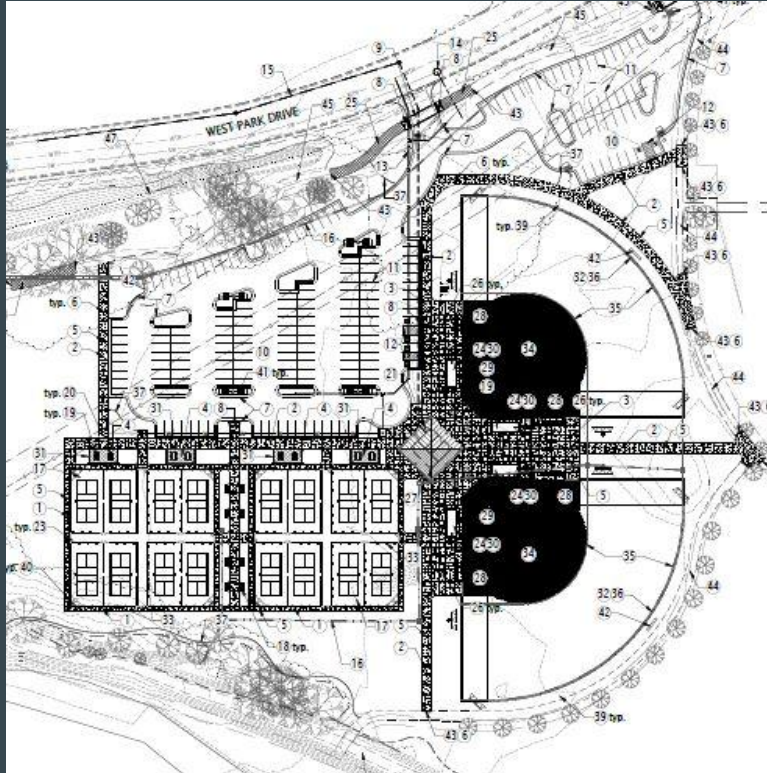


Access and Viewing Areas

- Typical play is 4 players per court, sizeable viewing areas and walkways are a must
- Shaded player/viewing areas create added comfort



Layout Examples



Design Considerations - Cont.

- Fencing - Typical 6'-8' perimeter fencing with preferred 42"-48" divider fencing
 - 4' wide gates are typically used on perimeter fence whereas openings are sometimes used on divider fence
 - Soft mesh vs Chain Link
- Fencing/noise barriers - heavier duty fence needed for support



Fencing Examples

- Soft Divider Fence - Removable
 - Opening at Net Line for access and viewing

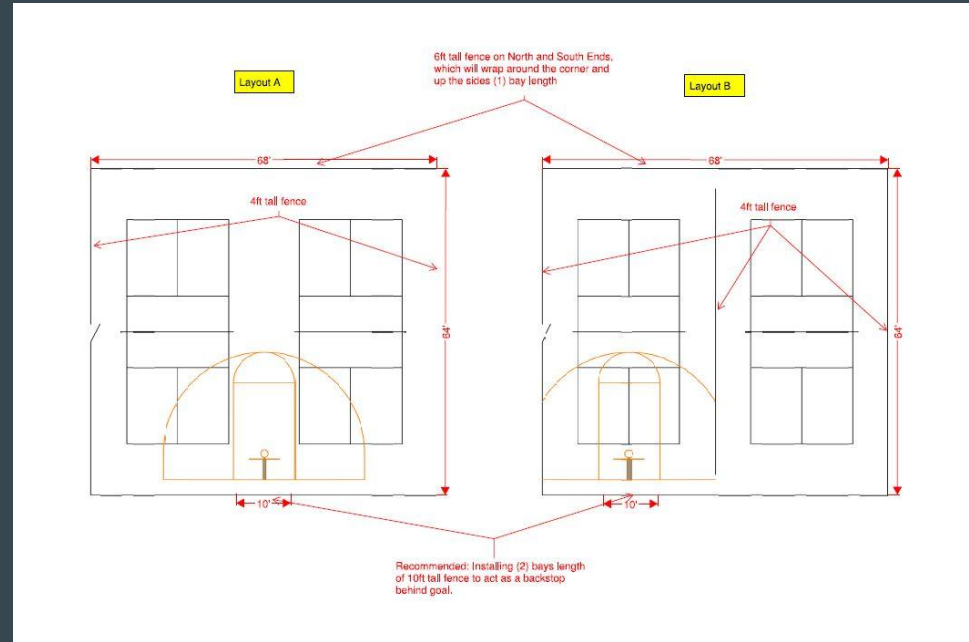


- Prefabricated wire mesh panels
 - Gates on perimeter fence, openings in divider fence



Fencing Examples - Cont

- HOA - Divider fence vs entire 3-point line
 - Balancing Multiple Sports



Lighting

- Lighting - 25-75 Ft Candles
 - Low mass vs high mass.
 - Private vs public/competitive



Construction Methods - Base

- Start with suitable compacted subgrade and properly sloped
- Asphalt
 - Smaller area creates more of a challenge to operate equipment effectively
 - Pavers, loaders and trucks won't typically fit into the space efficiently
- Concrete
 - Durable pavement with effective placement
 - Con - cracking and control joint visible
- Post-Tension Concrete
 - Durable pavement with effective placement
 - Sawcut/control joint elimination and cracking mitigation
 - Overlay or New Construction

The Court

- Court surfacing similar to Tennis
 - Hard Surface - Acrylic Coating
 - Up to three colors per court
 - Kitchen painted out of bounds or third color for easy identification
- Equipment
 - Net: 34" above playing surface
 - Can be held off surface 4-6" to allow for balls to roll under the net
 - Posts: 36" height

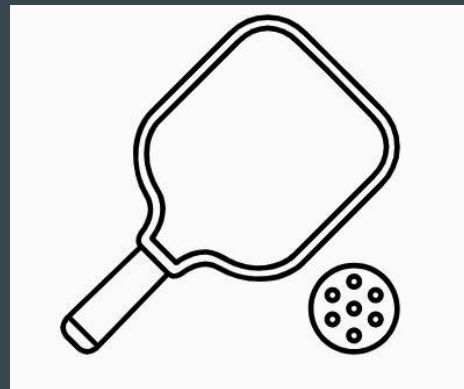


Involving Pros and Community in Planning

- Evaluate and understand your customers and their needs
 - Residence > City > Country Club
 - Capacity of Players
 - Parking
- Involve Landscape Architects to improve aesthetics and surrounding landscape and abide to local guidelines
 - Noise Mitigation
 - Tall perimeter greenery to mitigate sound
 - Lighting spill
 - Layout design

Continuing to Grow

- 2020 growth by more than 20%
 - Remains as the fastest growing sport (USA Pickleball)
- The continued growth of the sport
 - More players = More needs
 - Paddle holders - to show who is up next
 - Additional and bigger seating/player area
 - Parking
 - Local players looking to push to expand court complexes and add courts in more parks
 - Repurposing existing courts ...



Converting Existing multi Courts to Pickleball

- Cities repurposing existing multi use courts into pickleball
 - Surplus of tennis courts are getting repurposed into pickleball or combination multi use courts
 - Contractor: evaluate pavement condition, use needs, size, and accessibility
- Warehouse's providing space for Pickleball
 - Flat floor, may need to be altered to accept coatings
- Single Tennis Court:
 - 2 - 4 Pickleball Courts
- Double Tennis Court
 - 4 - 8 Pickleball Courts
- Fencing
 - Existing tennis net used as minimal divider
 - 4ft divider fence between courts if space and budget allow
 - 6ft divider fence between ends of courts if space and budget allows.



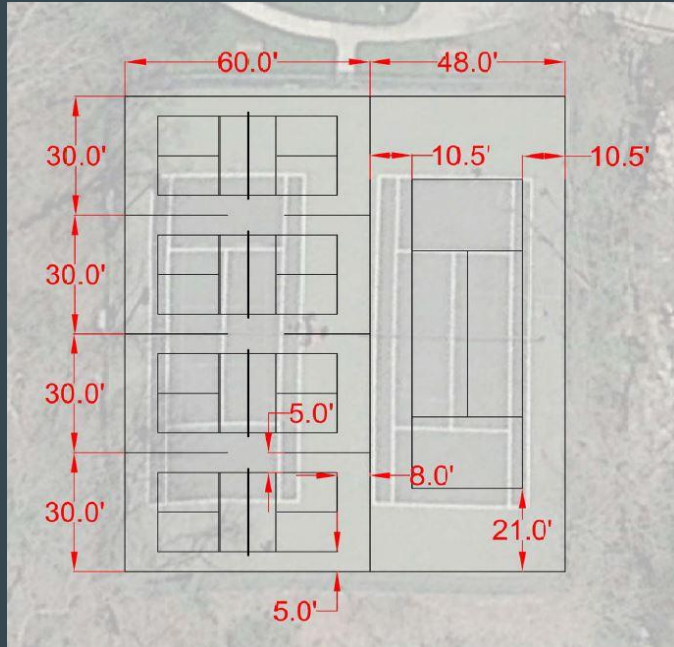
Two Tennis Courts Become Four Pickleball

- Spacious for player seating to be added
- Utilizing tennis nets for backstops
- Cost effective



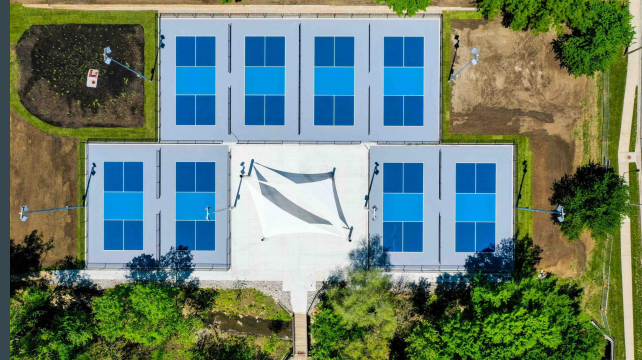
Adapting to Existing Courts

- Tight space requires different alternate layouts - singles court



Making Use of Existing Space

- Four existing tennis court needing a purpose
 - Post-Tension Concrete Overlay
 - Hi Mast Lighting
 - Spacious shaded viewing area
 - Good access with existing parking



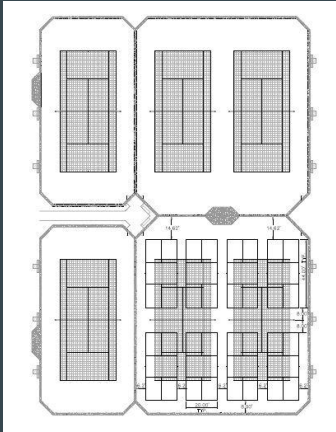
Three Sport Combo - Multi Use

- Four tennis courts create space to evolve into pickleball and basketball
 - Resurface pavement and add equipment



Pickleball on a Budget

- Adding Lines to existing courts
- Mobile Net Systems



QUESTIONS?