

Annual Report 2015

Psychotherapy Research

Editors: Wolfgang Lutz, Managing Editor, & Jeffrey A. Hayes

Associate Editors: Christoph Flückiger, Lynne Knobloch-Fedders,
Heidi Levitt, Andrew C. Page

Book Review Editors: Ulrike Dinger & Mariane Krause

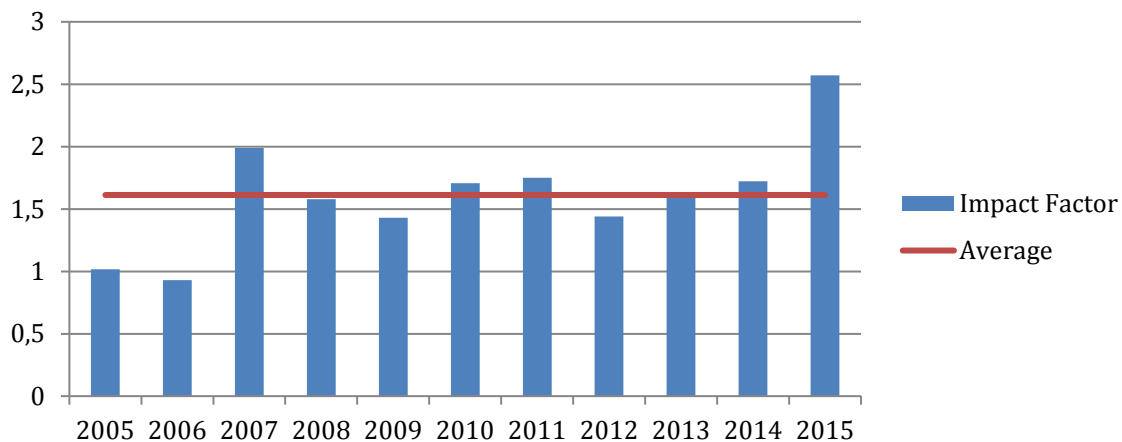
Advisory Editors: We have 118 advisory editors

Editorial Assistant: Julian Rubel

Ad Hoc Reviewers: In 2015, 160 ad hoc reviewers contributed to *Psychotherapy Research*.

Impact Factor (Thomson Reuter Citation Report)

Psychotherapy Research 2-Yr Impact Factor 2005–15



2-year IF: 2.570 (All time high!)
Ranking: 30/121 Clinical Psychology
5-year IF: 2.226
2015 Eigenfactor: 0.00318

Sources of Support

During 2015, the editorial offices of *Psychotherapy Research* received substantial institutional support from Taylor & Francis, the Society for Psychotherapy Research, and the Department for Clinical Psychology and Psychotherapy at the University of Trier.

Published Papers

During 2015, 71 papers were published in six issues of *Psychotherapy Research*. The manuscript types were as follows: 66 Original Manuscripts, 3 Introductions, and 2 Corrigenda. There were three special issues on *Building collaboration and communication between researchers and clinicians*, *Society for Psychotherapy*

Submission & Acceptance Rates

Data regarding the flow of manuscripts by year, type and country are presented below, followed by current acceptance rate, decision and publication lags:

Submissions by Year

Year	2004	2005	2006	2007	2008	2009	2010	2011	2012	2013	2014	2015
Original	97	134	149	153	161	222	223	195	205	195	214	218
Revised	138	116	139	147	170	120	98	170	171	217	132	194
Total	235	250	288	300	331	342	321	365	367	412	346	412

Submissions by Country

We had submissions from first authors representing 43 different countries.

Acceptance Rate

The acceptance rate in 2015 was approximately 18% for original manuscripts and 50% for total manuscripts (revisions included).

Decision Lag

In 2015, it took on average 7 weeks for a manuscript to receive a final decision from submission. The number of months from first submission to first decision reduced considerably compared to 2014: 57% within 2 months (2014: 37%), 75% within 3 months (2014: 60%).

Publication Lag

Publication lag in 2015 was approximately 6.5 weeks to online publication.

Circulation

Psychotherapy Research circulation continues to increase as evidenced by its download rates. Downloads increased by 21.5% to 94,925.

Publisher Relations

The relationship with Taylor & Francis continues to be excellent. The publisher has been very responsive to the editors, authors and readership. Changes continue to be made to refine ScholarOne and to improve the review process. And a variety of creative promotional efforts continue.

Message to Members

We continue in our commitment to making PR the premier psychotherapy research journal on the international stage:

- **READ YOUR JOURNAL**
- **CITE IT WHEN YOU WRITE**
- **SUBMIT YOUR BEST WORK**
- **ASK YOUR LIBRARY TO SUBSCRIBE**