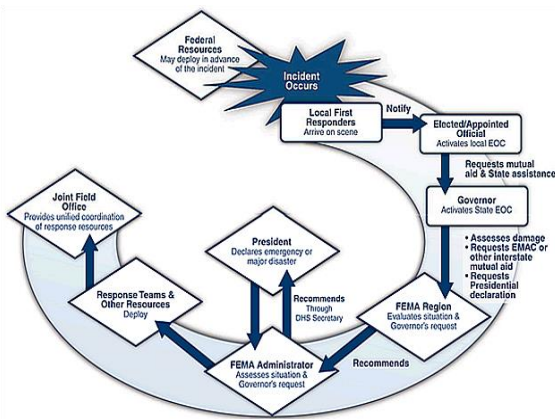
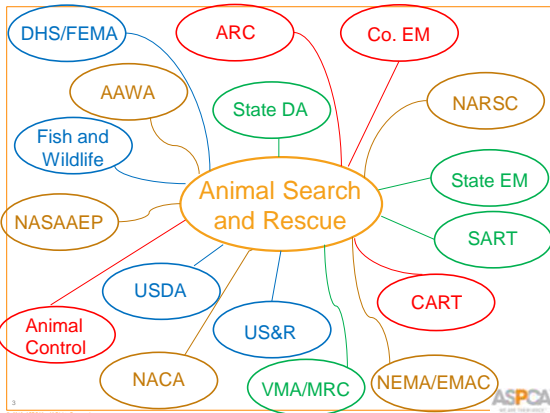


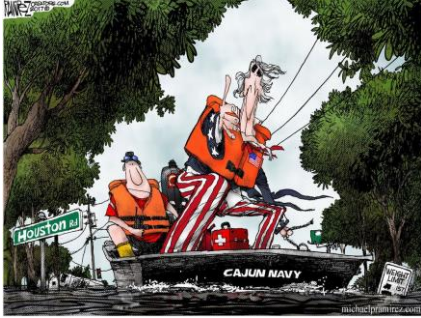
Creating a Certified Emergency Response: State, National, and Federal Coordination

Dick Green, Ed.D.
Senior Director, Disaster Response
ASPCA

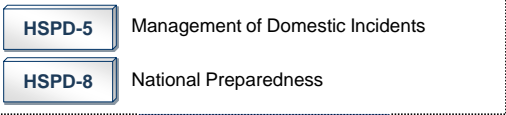




Federal



Homeland Security Presidential Directives



Mandates

- National Preparedness Goal
- **National Incident Management System (NIMS)**
- National Response Framework (NRF)



Stafford Act

Sec. 502. Federal Emergency Assistance

- (a) Specified - In any emergency, the President may
- (1) **direct** any Federal agency, with or without reimbursement, to utilize its authorities and the resources granted to it under Federal law (including personnel, equipment, supplies, facilities, and managerial, technical and advisory services) **in support of State and local emergency assistance efforts to save lives, protect property and public health and safety, and lessen or avert the threat of a catastrophe, including precautionary evacuations.**



Pet Evacuation and Transportation Standards Act (PETS Act) 2006

Amends Stafford Disaster and Relief Emergency Assistance Act

“Ensure that State and local emergency preparedness operational plans address the needs of individuals with household pets and service animals following a major disaster or emergency.”



10 © 2017 ASPCA. All Rights Reserved.

FEMA: National Response Framework

- Created in 1979 and given the authority to provide for all disasters regardless of cause
- Incorporated elements of ICS into a federal emergency management plan referred to as the National Response Framework
- NRF provides context for how the *whole community* works together and how response efforts relate to other parts of national preparedness



National Response Framework

Core to the NRF are the Emergency Support Functions (ESF), each representing the resources typically needed in a disaster



11 © 2017 ASPCA. All Rights Reserved.

Emergency Support Function (ESF)

Provide the structure for coordinating Federal interagency support for a Federal response to an incident.

Mechanisms for grouping functions (of resources and capabilities) most frequently used to provide Federal support to States and Federal-to-Federal support, both for declared disasters and emergencies.

Currently there are 15 ESFs.

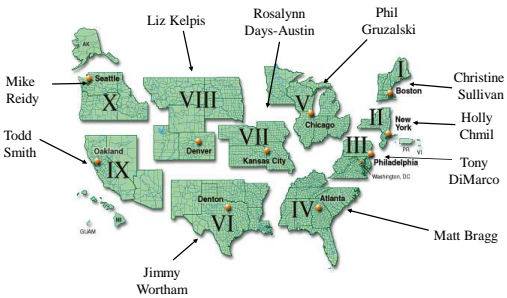


12 © 2017 ASPCA. All Rights Reserved.

Emergency Support Functions (ESF)

- #1 Transportation
- #2 Communications
- #3 Public Works & Engineering
- #4 Firefighting
- #5 Emergency Management
- #6 Mass Care, Emergency Assist, Housing, and Human Services
- #7 Logistics Management and Resource Support
- #8 PH and Medical Services
- #9 Search and Rescue (SAR)
- #10 Oil and Haz- Mat Response
- #11 Ag and Natural Resources
- #12 Energy
- #13 Public Safety and Security
- #14 Long-term Community Recovery and Resource Support
- #15 External Affairs

FEMA Regions and ESF 11 Coordinators



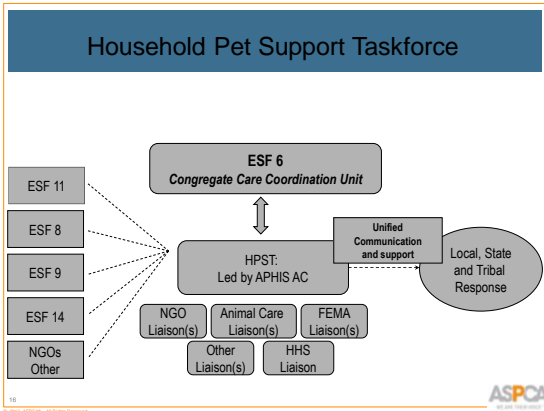
Federal Support for Animals

National Response Framework:

- ESF 6: Mass Care support for Shelter Task Force
- ESF 8: HHS and National Veterinary Response Team
- ESF 9: Inclusion of ASAR
- ESF 11: Small and Large Animals
- Subject Matter Expertise (SME)



Individual and Public Assistance



Animal Resource Typing

"A common language for the movement of resources"

ASPCA

NIMS 508: Resource Typing Definitions

Used to categorize, by capability, the resources requested, deployed, and used in incidents. *Measurable standards.*

- Veterinary Medical Team (Types 1-4)
- Animal Shelter Team – Cohabitated (Types 1-4)
- Animal Shelter Team – Collocated (Types 1-4)
- Animal Shelter Team – Animal Only (Types 1-4)
- Animal Evacuation, Transport, and Re-entry Team (Types 1-2)
- Animal and Agriculture Damage Assessment Team (Types 1-2)
- Animal Search and Rescue Team (Types 1-3)
- Companion Animal Decontamination Team (Types 1-3)
- Animal Depopulation Team (Type1)

ASPCA

NIMS 509: Position Qualifications

Inventorying, credentialing, and qualifying of personnel.
Validating identity and attributes

- Veterinarian
- Vet Assistant
- Animal Behaviorist
- Animal Response Shelter Manager
- Animal Care and Handling Specialist
- Animal Reunification, Tracking, and Identification Specialist
- Animal Emergency Response Team Leader
- Animal Control/Humane Officer
- Animal Search and Rescue Technician
- Animal Decontamination Specialist
- Animal Depopulation Specialist



© 2017 ASPCA. All Rights Reserved.

Butte County (Camp Fire)

- Type 3 Companion Animal Sheltering Team
- Type 3 Large Animal Sheltering Team
- 2 - Type 1 Animal Behavior Specialists
- Type 4 Companion Animal Veterinary Team
- Type 4 Large Animal Veterinary Team
- Animal Care and Handling Specialist
- Animal Control/Humane Officer



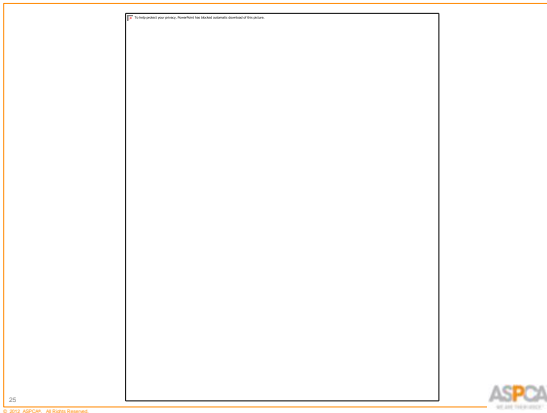
© 2017 ASPCA. All Rights Reserved.

Animal Control/Humane Officer

RESOURCE CATEGORY	Animal Emergency Response
RESOURCE KIND	Personnel
OVERALL FUNCTION	The Animal Control/Humane Officer maintains public safety by enforcing animal-related laws and providing safe and humane capture and containment of animals in one or more of the following competency areas: 1. Companion animals, including pets, service animals, and assistance animals 2. Livestock, including food or fiber animals and domesticated equine species 3. Wildlife animals, captive wildlife, and zoo animals 4. Laboratory animals
COMPOSITION AND ORDERING SPECIFICATIONS	1. This position can be ordered as a single resource or in conjunction with a NIMS typed team (Animal Search and Rescue Team). 2. Discuss logistics for deploying this position, such as security, lodging, transportation, and meals, prior to deployment. 3. This position typically works 12 hours per shift, is self-sustainable for 72 hours, and is deployable for up to 14 days. 4. Requestor specifies competency areas necessary based on the animal population the position will serve. 5. Requestor specifies specialty skills or certifications necessary, such as euthanasia or chemical capture. 6. Requestor specifies whether Animal Control/Humane Officer should bring animal control vehicle and specialized equipment.

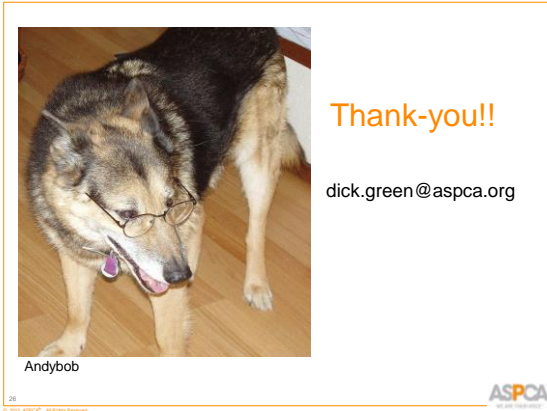


© 2017 ASPCA. All Rights Reserved.



25
© 2017 ASPCA. All Rights Reserved.





Andybob

26
© 2017 ASPCA. All Rights Reserved.



Thank-you!!

dick.green@aspc.org
