



UNIVERSITY
FILM&VIDEO
ASSOCIATION

SAFETY & SANITIZATION PROTOCOLS FOR MEDIA PRODUCTION EDUCATION UNDER COVID-19

July 27, 2020

Steve Weiss
Colorado State University
Journalism and Media Communication

STEVE WEISS
COLORADO STATE UNIVERSITY

- Journalism and Media Communication Department
- Video production class/lab instructor
- Special projects coordinator
- Live TV production (Ram Productions) advisor
- Video/audio equipment room supervisor

WHAT ROAD DO YOU TAKE IN FALL SEMESTER?

- Customized approach for each university and facility
- Protocols should meet public health, university and department guidelines
- Consider multiple options and pick the best
- Borrow ideas from others (that's why we are all here today!)
- Consult professional resources
- Trial and error
- Liability, ethical and moral obligations to do our best
- Document your efforts!

IDENTIFY SCHOOL POLICIES



COLORADO STATE UNIVERSITY

SAFETY

[Safety & Police](#) ▾

[Emergency Planning](#) ▾

[Training & Educational Resources](#) ▾

[Report a Concern](#)

[Reported Incidents of Bias](#)

[COVID-19](#)

Information about COVID-19



What you can do to stop the spread of germs

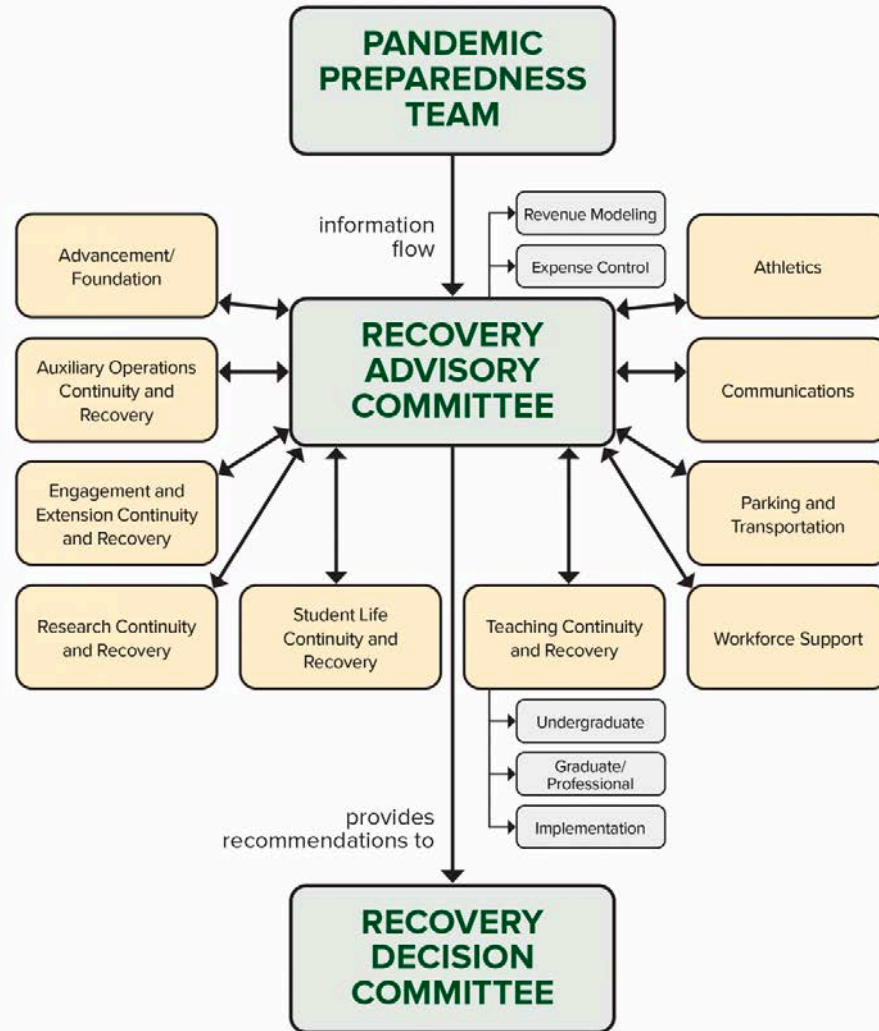
Colorado State University is closely monitoring and following COVID-19 guidance as outlined by public health experts. We are in daily communication with our Larimer County and Colorado Departments of Health and Environment. We are actively tracking and following federal guidelines outlined by the Centers for Disease Control and Prevention, including new guidance for COVID-19 pandemic preparedness planning and protocols for students, faculty and staff who are or have recently traveled.

The university has had protocols in place to monitor for the virus since January 14.

REVIEW SCHOOL WEBSITE AND Q & A

Concerns about exposure

- + What should I do if I'm concerned I have been exposed or know someone who may have been exposed?
- + What's the difference between quarantine and self-isolate?
- + Supervisor's Guide to Reports of Exposure
- + I'm an instructor/faculty member. What should I do if a student reports they are sick with COVID?



Recovery Advisory Committee instructs Working Groups on assumptions and parameters.
Working Groups make recommendations to Recovery Advisory Committee for budget impact analysis.
Recovery Advisory Committee reports to Recovery Decision Committee.

Fall 2020 Framework



As we plan for a fall semester in-person for our students, faculty, and staff, we have developed a comprehensive wellness framework to prioritize the health of our community. This framework, and the specific guidelines and protocols we will develop to implement it, will necessitate changes to normal activities and create obligations for individuals. As is well-documented by public health experts internationally, personal behaviors and responsibility are critically important in minimizing the transmission of the COVID-19 virus.

These are some key components of the framework to be in place in advance of the start of classes this August:

Campuses will be open for classes and student activities. We will provide face-to-face instruction on campus this fall, beginning as scheduled on Aug. 24. Some classes will be online-only, and we are working to facilitate remote learning for those who will need that mode due to health and other concerns. We plan to have less density in our classrooms than in typical semesters and to create hybrid classes as needed to incorporate online learning.

We will move to remote, online classes following Fall Break. The last two weeks of classes (November 30-December 11) and finals week (December 14-18) will be delivered virtually. Residence Halls will remain open during and after Fall Break for students who need to remain or return. Other university facilities will adjust operations at that point in the semester as appropriate per public health









B-roll

- Interview location
- File
- Campus shots

Lunch

55BUT	Thin wheat
Vito 8in	French
Veggie 8in	9 grain
3-Beach Club 8in	9 grain
Boatlegger 5in	wheat
3-Country Club 8in	French
Cubano 8in	9 grain
5-Coke, Coke De	
Ice Tea or Lemonade	
Chips - Jalapeno	
Salt & Vinegar	
and chips	

- Jacy Walsh-outdoor
- Mariana Webb-? or 2
- L - outdoor
- J
- Campus shots









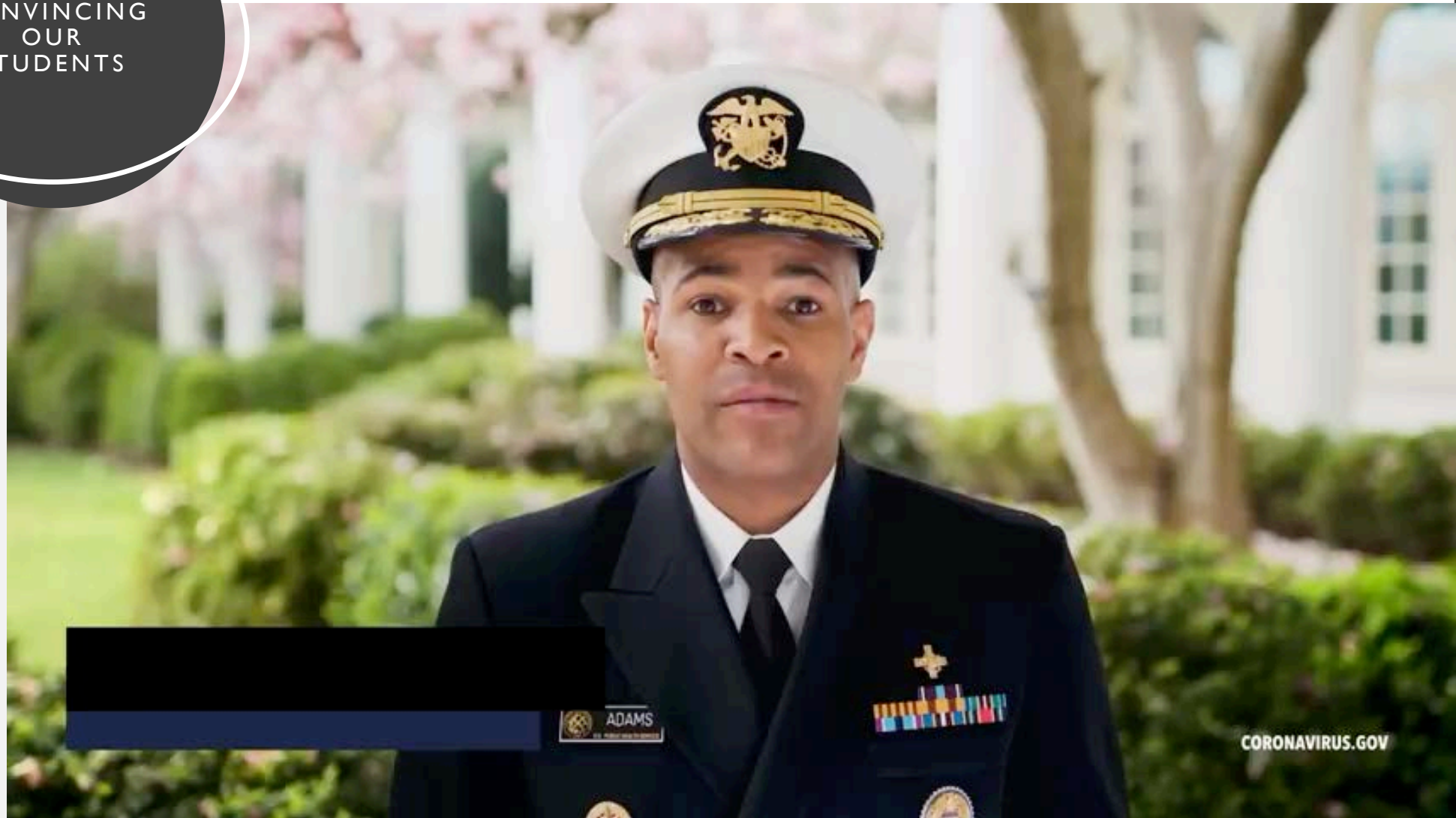
HOW TO SELL YOUR OWN UNIVERSITY

- Be proactive...take the discussion and questions to administration
- Document your process and successes
- Use your production capabilities to be a help and build allies

COVID-19 HEALTH PROTOCOLS COLORADO STATE UNIVERSITY FALL SEMESTER 2020



CONVINCING
OUR
STUDENTS



THE FALL 2020 CHALLENGE

- General classroom protocols
- Media production protocols
- Unique “In the field” challenges
- How do we safely “hands on equipment” educate?
- How do we give our students a resume reel advantage?

CSU CLASSROOM POLICIES

- All instructors, employees and students will be masked at all times while in the building
- Traffic patterns are controlled and social distancing maintained
- All faculty, employees and students will conduct self-health screenings before arriving on campus with temperature readings, etc., and report it online
- Those who fail to report online will fill out paper version of form and department is responsible to keep these records throughout the semester (we supply the no-contact thermometer in our office)

Self-Reported Information:

Name: Weiss, Steven

eMail: steven.weiss@colostate.edu

Supervisor: Luft, Gregory

Dept: Journalism and Media Communication

Instructions

Please record the date, temperature, shift type and select all symptoms that apply.

Symptoms:

Date:*

05/28/20

Temperature:*

98.6

Shift Type:*

☒ Start of Shift ☐ End of Shift

Phone Number:*

(000) 000-0000

Are you living with, or have you had close contact with someone who has TESTED positive for COVID-19?*

☐ Yes ☐ No

Select all new symptoms that apply (not related to pre-existing conditions or seasonal allergies)

☐

Fever

☐

Head or Body Aches

☐

Chills

☐

Sore Throat

☐

Cough

☐

Nausea, Vomiting or Diarrhea

☐

Shortness of Breath/Difficulty Breathing

☐

Loss of taste or smell

Describe Other Symptoms (400 characters):



Date: _____

Employer, retain these forms in a secure place for three months, and provide the forms upon request.

[illegible]

DEPARTMENT CLASSROOM/LAB POLICIES

- Production lab-based courses (18 students) that meet twice a week will be reduced to 9 or under students with rotating meeting times during the 2nd hour or 2nd day
- Supplemental hybrid remote instruction when possible to supplement lab time
- Lab-based class hours will be extended into the evenings and Saturdays to increase and share those spaces
- Computer use is restricted to a minimum of 6 foot distance between stations/students

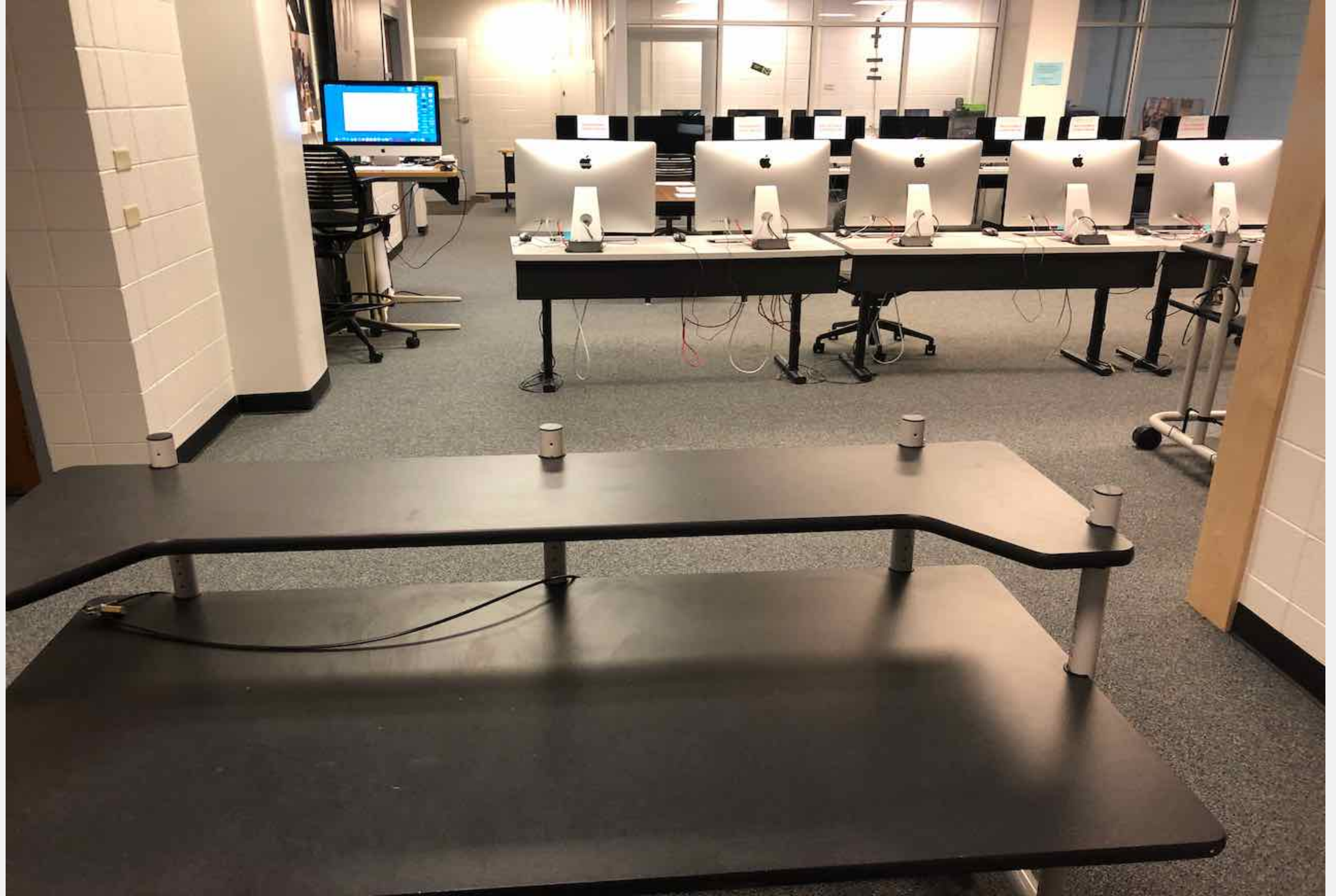
DEPARTMENT CLASSROOM/LAB POLICIES

- Responsibility for cleaning is shared but must be done at the start of each class period by incoming students to ensure disinfecting process is complete
- Computer lab areas will be “monitored” by instructors or student employees for compliance
- All instructors and students will be masked at all times while performing “media production activities” (indoors and outside)



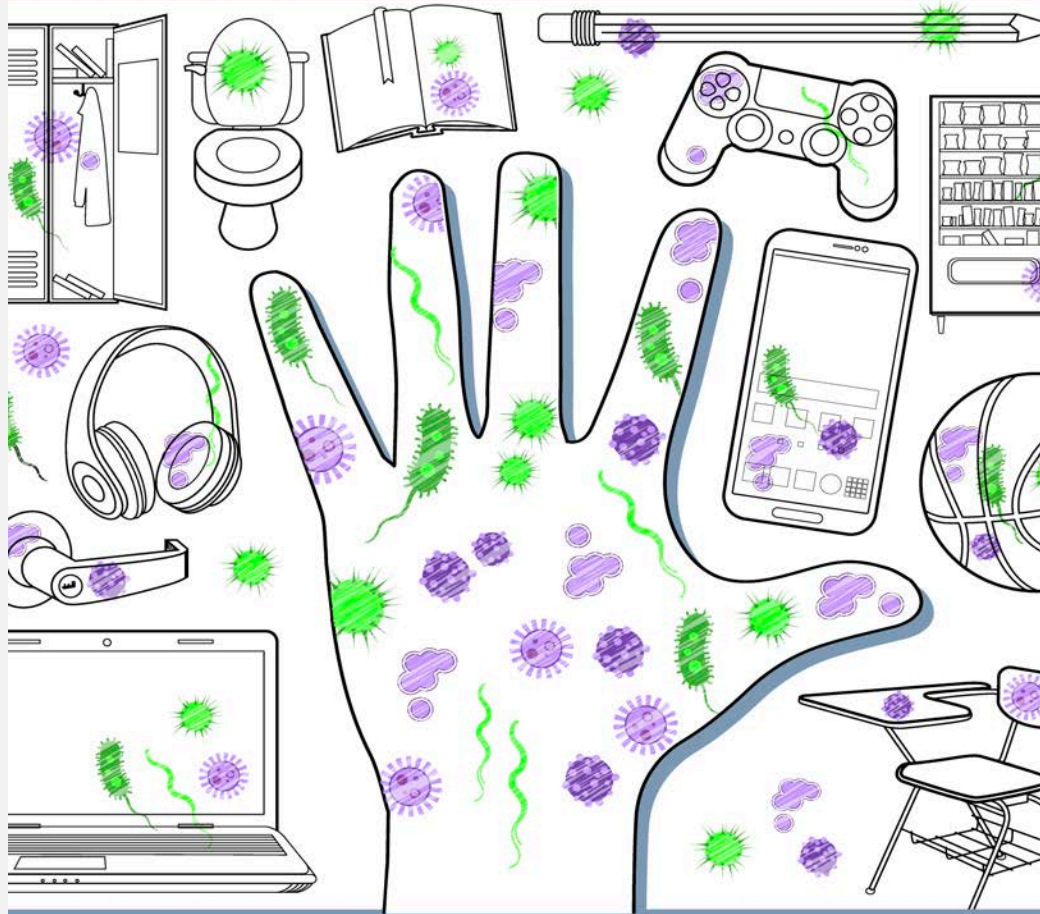






GERMS

are all around you.



Stay healthy.
Wash your hands.

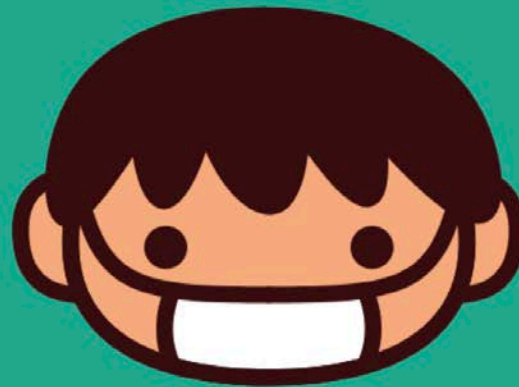


CS 316683-C 04/24/2020

cdc.gov/coronavirus

HOW TO PUT ON, USE, TAKE OFF AND DISPOSE OF A MASK

Cover mouth and nose
with mask and **make sure**
there are no gaps
between your face and
the mask



World Health
Organization

COVID-19 PERSONAL EQUIPMENT NEEDS



COVID-19 PERSONAL EQUIPMENT NEEDS



LAB AND EQUIPMENT CHECKOUT ROOM ISSUES

- Checkout of equipment safety procedures (distancing and barriers during processing)
- Checkout room scheduling adjustments
 - Times and days
 - Length of checkout period
- Checkout room quarantine strategies
- Checkout room cleaning protocols

COVID-19 EQUIPMENT ROOM NEEDS





Roll over image to zoom in



Floor Standing Sneeze Guard/Room Divider, Heavy Vinyl by BenchPro - Multiple Sizes Available

by [BenchPro](#)

Price: **\$151.00** & **FREE Shipping**

Pay ~~\$151.00~~ **\$141.00** when you add a new payment method to your Amazon wallet. [Click here to add a debit card and save.](#) **Terms Apply**

Size: **40" H x 57" W x 24" D**

40" H x 57" W x 24" D

52.5" H x 57" W x 24" D

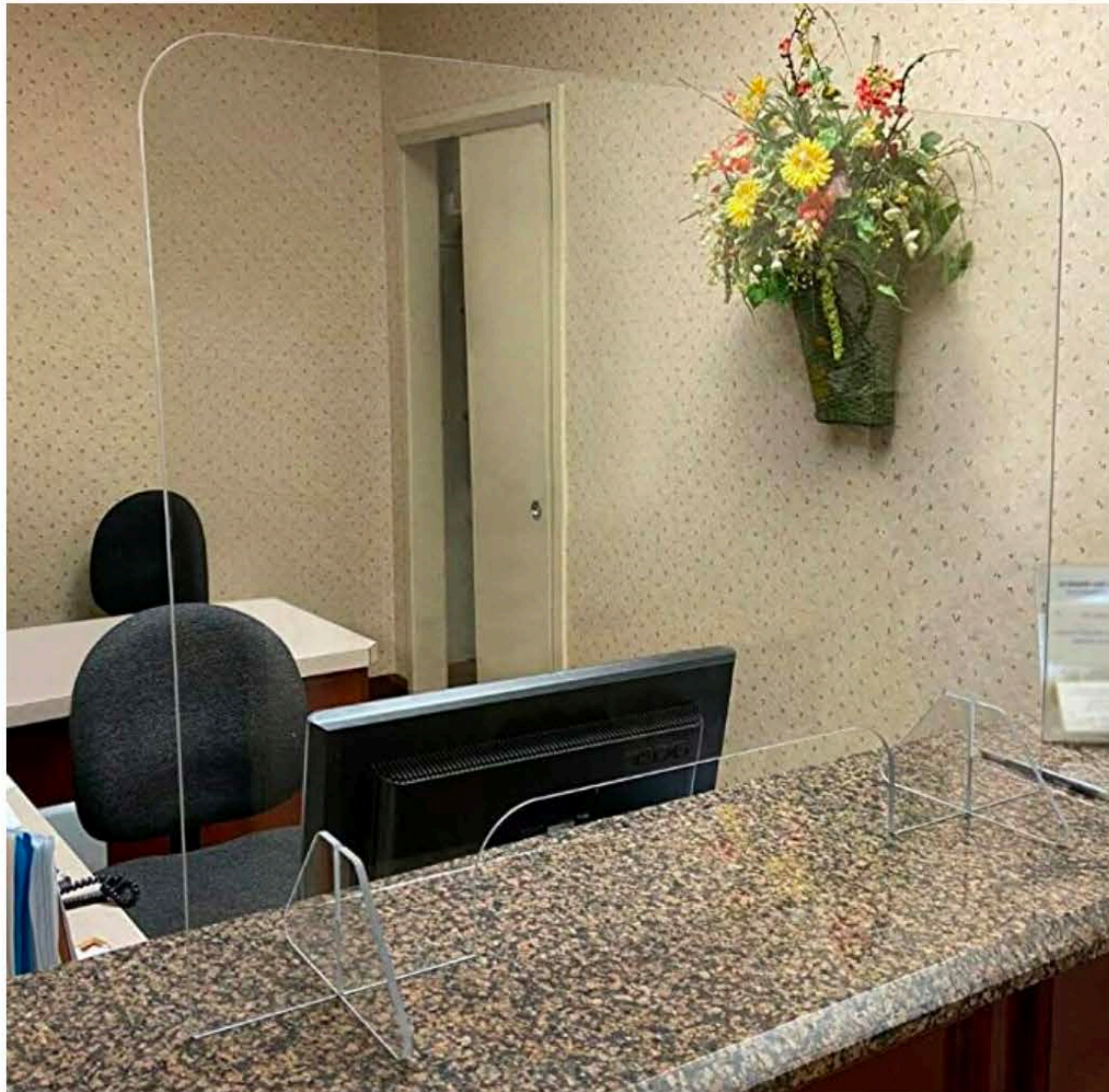
70" H x 57" W x 24" D

Color: **Dark Blue**

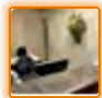


- Uses Reusable "Pipe & Joint" System Components
- Wide Base for Excellent Support
- All Parts Interchangeable and Available Individually
- 10 Year Unconditional Warranty
- Ships in 1 Working Day from CA

› [See more product details](#)



Roll over image to zoom in



Sneeze Guard - Plastic Protection Barrier - Cashier, Checkout, Counter, Store, Desk 1/4" Thick Clear Impact Resistant -Ships The Same Day By 2p.m EST (32"W x 24"H - Cutout 12"W x 6"H)

by [CNC INC](#)

★★★★★ 22 ratings

Price: **\$94.99** & **FREE Shipping**

You can earn 5% back and get \$100 off instantly: Pay \$0.00 upon approval for the Amazon Prime Store Card.

Size: **32"W x 24"H - Cutout 12"W x 6"H**

22"W x 36"H - 12"W x 6" Cutout

24"W x 24"H - No Cutout

24"W x 24"H - Cutout 12"W x 6"H

30"W x 55"H Seat Barrier

32"W x 24"H - No Cutout

32"W x 24"H - Cutout 12"W x 6"H

48"W x 24"H - Cutout 18"W x 6"H

48"W x 30"H - No Cutout

48"W x 30"H - Cutout 18"W x 3"H

48"W x 30"H - Passthrough Cutout 18"W x 6"H

60"W x 36"H - Cutout 24"W x 12"H



Roll over image to zoom in

Medify MA-25 W1 Medical Grade Filtration H13 True HEPA for 500 Sq. Ft. Air Purifier | Dual Air Intake | Two '3-in-1' Filters | 99.9% Removal in a Modern Design - White

by [Medify Air](#)

★★★★☆ [389 ratings](#)

List Price: ~~\$249.00~~

Price: **\$160.00** ✓ [prime](#) & [FREE Returns](#)

You Save: **\$89.00 (36%)**

Get \$100 off instantly: Pay \$60.00 upon approval for the Amazon Prime Rewards Visa Card. No annual fee.

Available at a lower price from [other sellers](#), potentially without free Prime shipping.

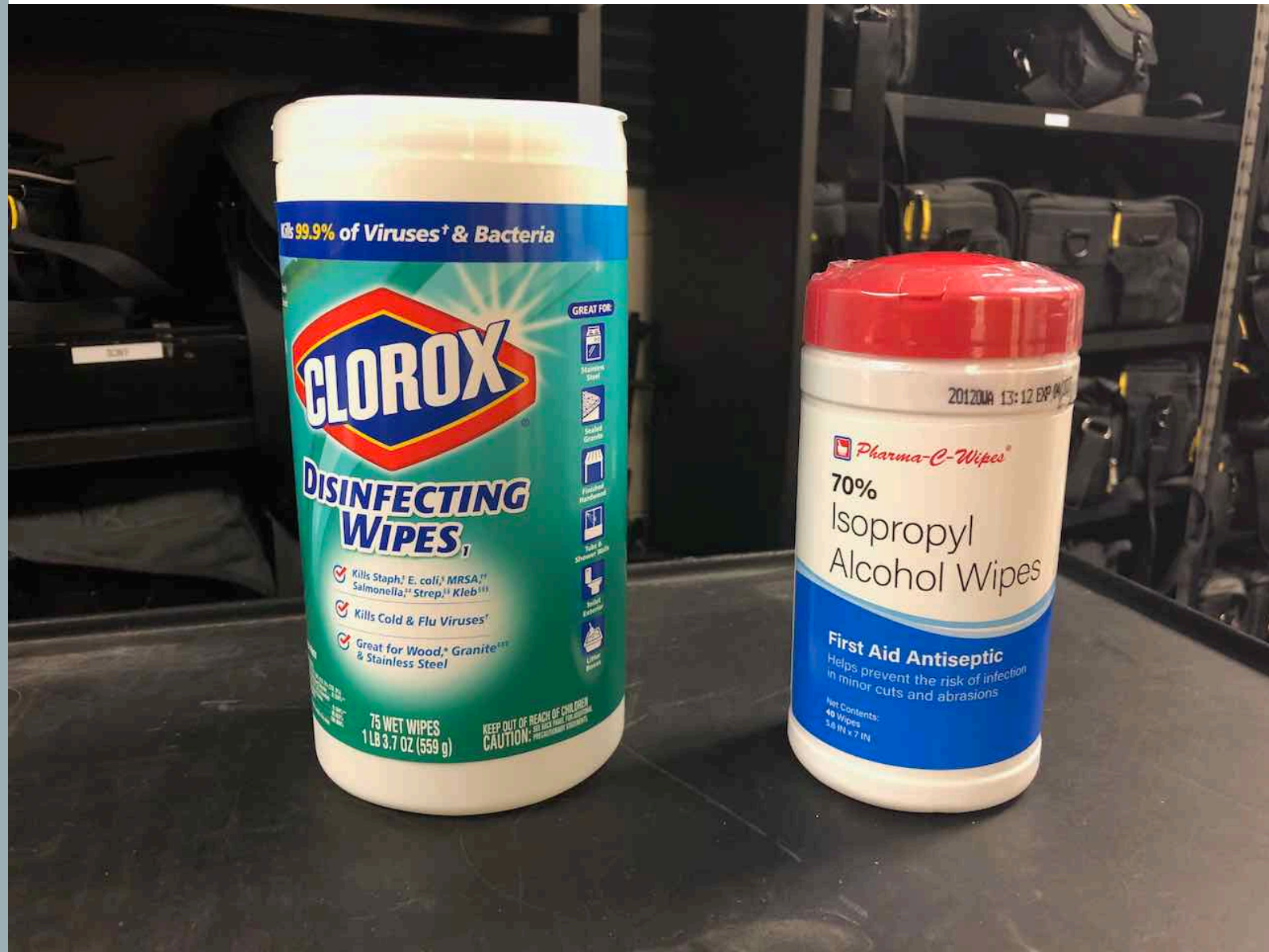
Size: **1-Pack**

1-Pack

2-Pack

Color: **White**

COVID-19 EQUIPMENT ROOM NEEDS



COVID-19 EQUIPMENT ROOM NEEDS

HamiltonBuhl HygenX Vray Portable UV Sterilizer

BH #HAHYGENXVRAY • MFR #HYGENX-VRAY

[1 Question, 2 Answers](#)



In Stock

\$299.00

Save the Tax with the [payboo](#) Card >

12 Months Promo Financing Available >

[View Cart](#)

Free Expedited Shipping
Want it by **Wed 6/3**? Order **now**
w/Free Expedited Shipping to Fort
Collins, CO

12 Month Promo Financing Available*

On purchases of \$599 or more made with the
B&H financing credit card. [Learn More >](#)

Get the Know-How Ask Our Experts

[Live Chat](#) | [800.606.6969](#) | [Request Callback](#)





59S[®] | Just UVC LED Sterilization

UVC LED Sterilizing Bag ^{PSO}

Eliminates 99.99%
Germs & Bacteria in
3 Minutes



Scan & See in Action



- 2.8 x High-Powered UV LED
- 1.5m (3000mm) UV Energy Output
- Eliminates up to 99.99% of S. aureus

Apple
Amazon
FDA
2.8 x High-Powered UV LED
1.5m (3000mm) UV Energy Output
Eliminates up to 99.99% of S. aureus



59S* | Just UVC LED Sterilization

UVC LED Sterilizing Bag 59S

Eliminates 99.99%
Germs & Bacteria in
3 Minutes



Scan & See in Action



Upstyle
Award



FDA

- ✓ 24 x High-Powered UV LEDs
- ✓ Up to 300uW/cm² of UV Energy Output
- ✓ Eliminates up to 99.99% of S. aureus



Up to 99.99%
Sterilization Rate



3-Mins Fast
Sterilization



Ozone Free
Environmental Friendly



No Chemical
Residues



360° Multi-Directional
Coverage





Coronavirus Puts UV in the Disinfectant Spotlight

By Lindsay Kalter



May 19, 2020 -- The [coronavirus pandemic](#) has breathed new life into a decades-old technique that can zap viruses and bacteria: ultraviolet light.

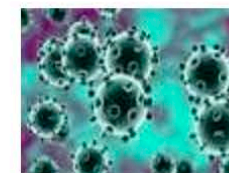
Hospitals have been using it for years to cut down on the spread of drug-resistant superbugs and to disinfect surgical suites. But there is now interest in using the technology in spaces like schools, office buildings, and restaurants to help reduce coronavirus transmission once public spaces are open again.

Coronavirus Outbreak 2020



[CORONAVIRUS HOME](#)

Full Coverage of the COVID-19 Outbreak



[ARTICLE](#)

Coronavirus 2020 Outbreak: Latest Updates



[ARTICLE](#)



Malley offered a checklist people can use if they are considering at-home products:

- Check to see if the device has a track record in home medical device disinfection, such as disinfecting CPAP masks, or if it has a commercial track record, such as being used to decontaminate DNA samples in a lab.
- **You get what you pay for.** Any device selling for under \$150 is probably not effective or reliable. Most quality devices are probably closer to the \$300 to \$500 range or higher.
- If the device is some sort of wand or manual light you shine on a surface, its instructions need to note how close you should hold it to the surface, how long you need to hold it there, and how much area it can treat when held in that one location for that amount of time.
- Lack of a user's manual, lack of customer and technical service departments that can be contacted, and lack of performance data from independent testing labs all suggest it will not be a good purchase.

UTILIZE APPROPRIATE SIGNAGE

UV radiation can cause skin irritation and damage your eyes.

Cleaning your hands with alcohol-based hand rub or washing your hands with soap and water are the most effective ways to remove the virus.

FACT:
Ultra-violet (UV) lamps should not be used to disinfect hands or other areas of your skin.



COVID-19 EQUIPMENT ROOM NEEDS

Goby Labs Sanitizer Spray for Microphones

BH #GOGLS104B • MFR #GLS-104-BULK



9 reviews

2 Questions, 3 Answers



In Stock

\$12.45

Save the Tax with
 12 Months Prom
Eligible for Free Expe

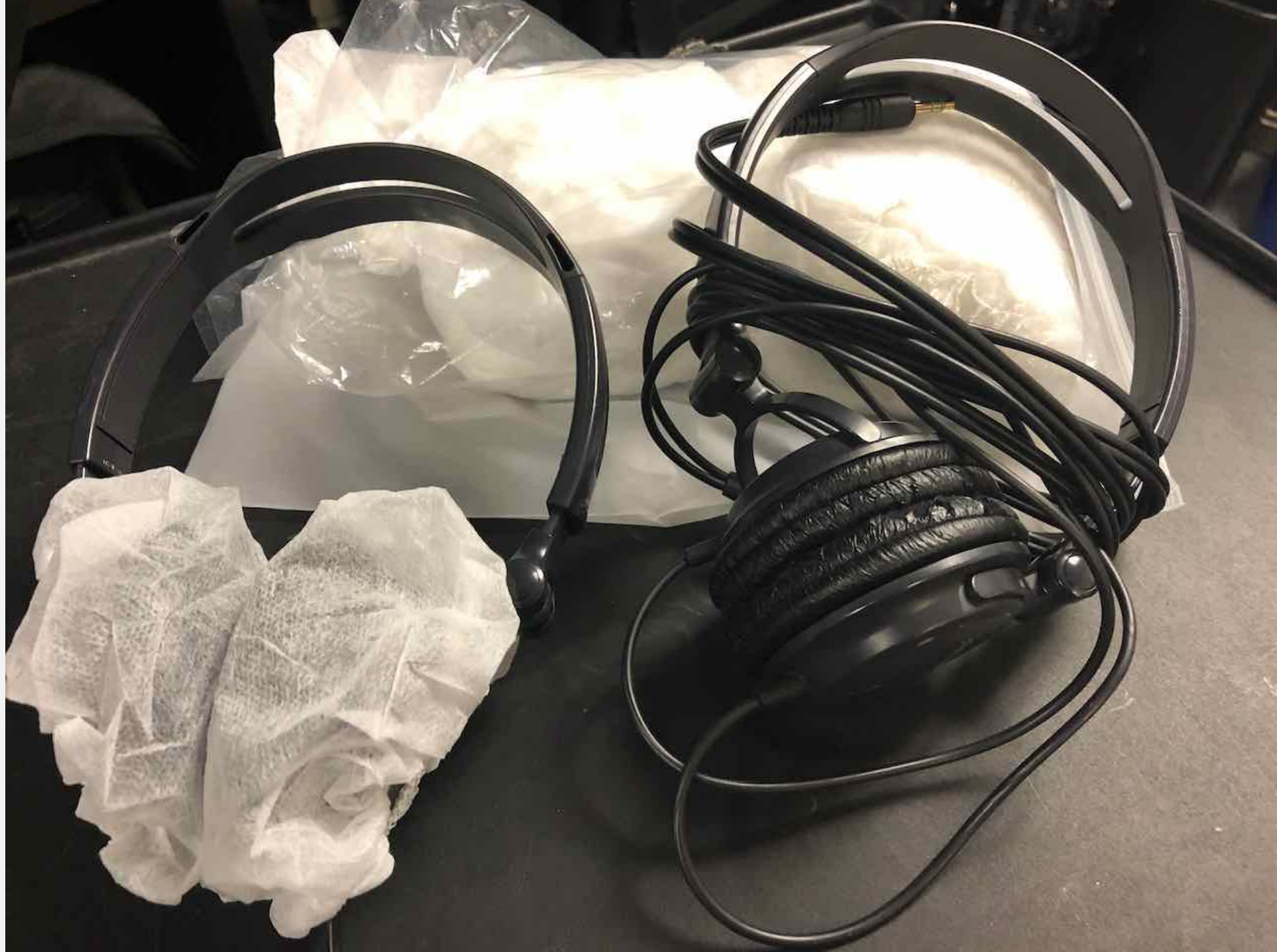
Free Shipping
Want it by Tu
w/Super Sav

12 Month Promo
On purchases of \$5
B&H financing cre

True Know-
Live Chat | 80

Key Features

- Anti-Bacterial Spray for Microphones
- Kills 99.9% of Germs



FIELD PRODUCTION PROTOCOL (LIFE BEYOND ZOOM)

- Make sure students understand the risks and do not feel pressured
- Field production: new curriculum- safety protocols
- Less collaboration, more MMJ style field production
- Get outdoors **WHENEVER** possible (buy more reflectors)
- Communicate with interviewees prior to arrival to make them aware of your safety precautions and process
- Masks and social distancing at all times
- COVID-19 Travel bag: alcohol wipes, hand sanitizer, gloves, microphone sanitizer
- Over deliver in perception and reality



- ✓ Kills Staph,³ E. coli,⁵ MRSA,¹⁷ Salmonella,²² Strep,⁵⁵ Kleb⁵⁵
- ✓ Kills Cold & Flu Viruses²
- ✓ Great for Wood,* Granite²²² & Stainless Steel

75 WET WIPES
1 LB 3.7 OZ (559 g)

KEEP OUT OF REACH OF CHILDREN
CAUTION









MULTICAM LIVE PRODUCTION IN THE FIELD

- Utilize your safety protocols
- Understand and participate in the venue safety protocols
- Document the process



9. BE AWARE OF PARTNERS/VENUES/PROFESSIONALS POLICIES AND PROCEDURES



Overview

The health and safety of all artists, touring personnel, and venue staff is the utmost priority. In compliance with state guidelines all venue and touring personnel will wear face coverings and gloves while working on-stage and backstage.

Equipment Handling

House equipment

- All house equipment will be handled by venue production crew.
- Microphones and stands will be disinfected before and after each performance.
- No vocal microphones will be shared between different artists.
- House crew will wash hands for 20 seconds every _____ minutes utilizing the sink in Cabin A.

Artist Gear/Backline

- Any band gear will need to be handled by artist/touring personnel.
- Any required backline equipment will need to be advanced alongside a plan of action for who is handling equipment (i.e backline tech, venue crew, or touring personnel).



CONSULT ALUMNI AND PROFESSIONAL RESOURCES

- How do they work safely?
- How do they clean their equipment?

SOLICIT ADVICE FROM PROFESSIONAL EXPERTS AND ORGANIZATIONS



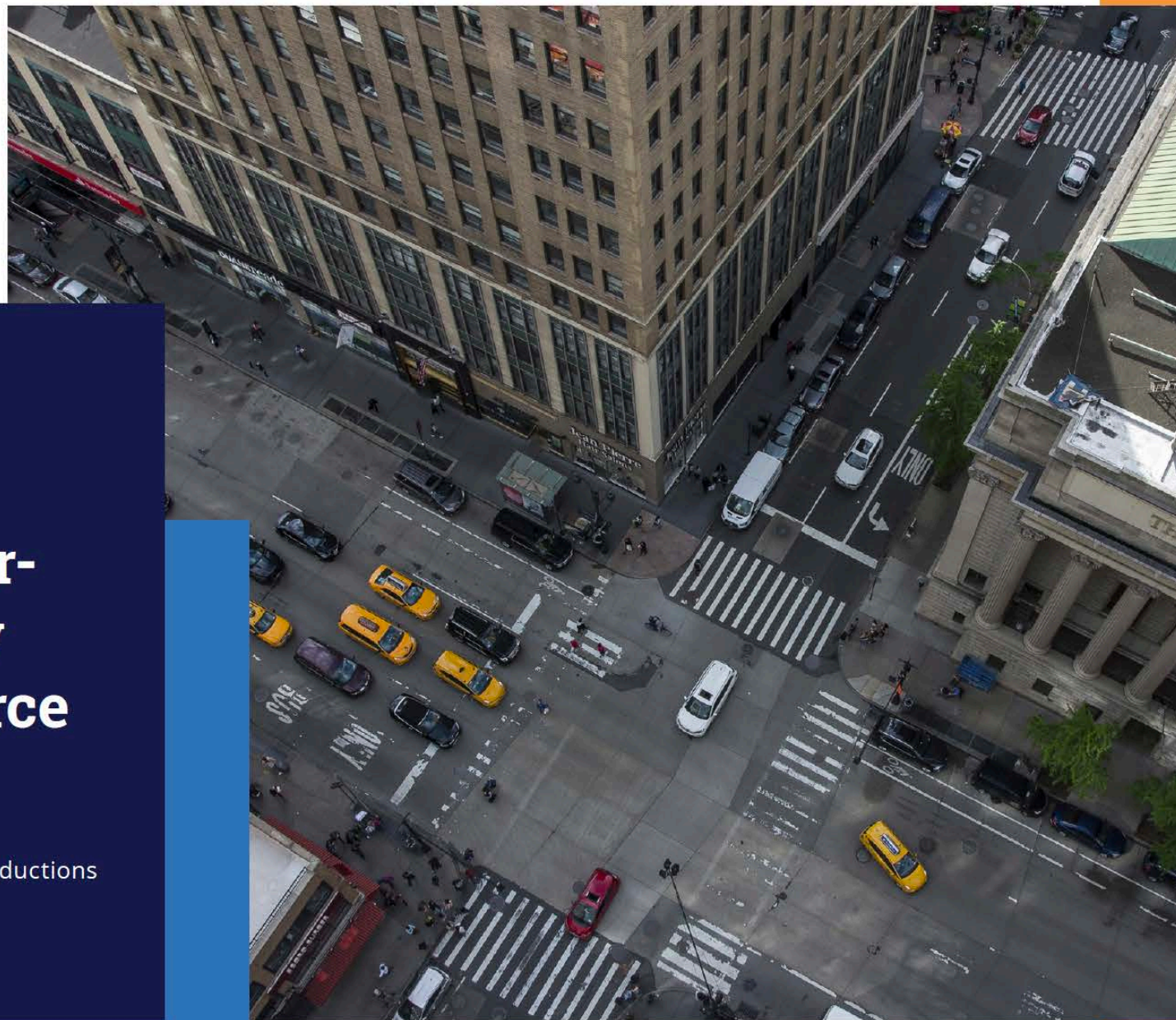
White Paper

Alliance of Motion Picture and
Television Producers

Industry-Wide Labor- Management Safety Committee Task Force

Proposed Health and Safety Guidelines
for Motion Picture, Television, and Streaming Productions
During the COVID-19 Pandemic

Submitted: June 1, 2020



**STATE OF GEORGIA
FILM & TELEVISION PRODUCTION
BEST PRACTICES TO REDUCE
CONTAGION OF COVID-19**



TALENT

It is always recommended that a mask be worn, except for those incidents strictly necessary for shooting, and that a safety distance of 6 feet be maintained. If it is not possible to maintain this distance, a record should be kept of the interactions between the actors so that possible contacts can be identified if someone were to contract the virus.

Consider using a clear barrier between actors while establishing marks and positions to be removed at the last moment.

Consider alternate shot set-ups, camera angles, lenses, etc. to allow for greater distance between actors.

Consider using members of the same household in a scene.

TRANSPORTATION

Attempt to limit number of people in a passenger van to 2 passengers at one time.

Drivers should wipe down inside vans (seats, handles, etc.) inside and out every time people exit the vehicle. For recommendations on disinfecting of vehicles, please refer to these CDC recommendations: <https://www.cdc.gov/coronavirus/2019-ncov/community/organizations/disinfecting-transport-vehicles.html>.

Require people to wear masks in vehicles.

Keep windows down when possible to promote ventilation.

ON-SET COMMUNICATION

In order to facilitate communication between team members while respecting the recommended safety distance of 6 feet, devices such as walkies and mobile technology, Bluetooth and Wi-Fi should be used. These devices should be for individual use only and should be disinfected before and after each day.

Devices and replacement batteries should be individually bagged and handed to the user in its bag.



Film Commission / COVID-19 FILM RESOURCES

SHARE 

COVID-19 FILM RESOURCES

Last Updated: July 14, 2020

GUIDANCE FOR PRODUCTIONS

Austin is currently open to production business but there are safety orders in place that must be followed. During this unprecedented time, the health and well-being of our local community and industry professionals is vital. The City of Austin and Travis County's coordinated **Stay Home – Work Safe Order** initially issued March 24, 2020 to prevent further spread of COVID-19. The Stay Home-Work Safe Order requires residents to stay at home, except for essential activities, essential businesses, and **businesses reopened under the Open Texas Executive Order**. The City of Austin Stay Home-Work Safe Order was **revised** on July 2, 2020 making protective masks mandatory in public spaces and limiting outdoor gatherings to

Los Angeles County to Give OK for Film and TV Production to Restart on Friday

By Gene Maddaus ▾



Shutterstock / sculpies

Los Angeles County is set to issue its guidelines on Thursday for the restart of film and TV production, allowing filming to resume as soon as Friday.

How to Disinfect Camera Equipment and Spaces

Recent Posts



By **Roger Cicala** Published March 20, 2020

 SHARE

 TWEET

- [Photography Fundamentals – How Shutter Speed Changes Your Photos](#)
- [Photography Fundamentals – How Aperture Changes Photos](#)
- [Photographers Discuss Precautions to Take When Returning to Work Post COVID-19 Restrictions](#)
- [The Great Flange-to-Sensor Distance Article. Part II: Photo Cameras](#)
- [Product Spotlight: Blackmagic eGPU Pro](#)



HOW TO DISINFECT VIDEO EQUIPMENT

HOW TO DISINFECT VIDEO EQUIPMENT

- How to disinfect
website: https://www.lensrentals.com/blog/2020/03/how-to-disinfect-camera-equipment-and-spaces/?fbclid=IwAR3cFrcfQcCH33BG4YWSo_Y6YUK2vQFIEoJgkENIz0IAtHnJFN5ZUmch48M
- Podcast: <https://youtu.be/TlaObkimIil>

QUESTIONS/COMMENTS

- Steve Weiss
- Steven.Weiss@colostate.edu