



On-Site Program

70th Annual Conference

"Moving the Needle: Digital Divide,
Social Justice, and Adult Education"

October 5 - 8, 2021

Sandestin Golf and Beach Resort
Mirimar Beach, Florida



East Carolina University

A GUIDE TO

Online Graduate Programs in Adult Education

15 Credits

36 Credits

Final
Portfolio



Graduate Certificates in:

- Community College Instruction
- Education in Healthcare Professions
- Student Affairs in Higher Education

Master of Arts in Education

- Fully Online
- Accredited University
- Award-Winning Professors of Adult Ed.



Admissions

<https://www.ecu.edu/cs-acad/gradschool/Admissions-Information.cfm>

Adult Ed Program Chair:
Dr. Steven Schmidt
252-328-1118
schmidtst@ecu.edu

Why adult education at ECU?



- Graduates of our online program work across the state in North Carolina's extensive system of 58 community colleges.
- Since 2008, more than 100 trainers have completed adult education instruction through our Army cohort program.
- ECU's online graduate programs in education were ranked 18th out of 309 by *U.S. News and World Report* in 2018.
- Our adult education faculty provide professional development training to the Brody School of Medicine and the ECU Dental School.



Table of Contents

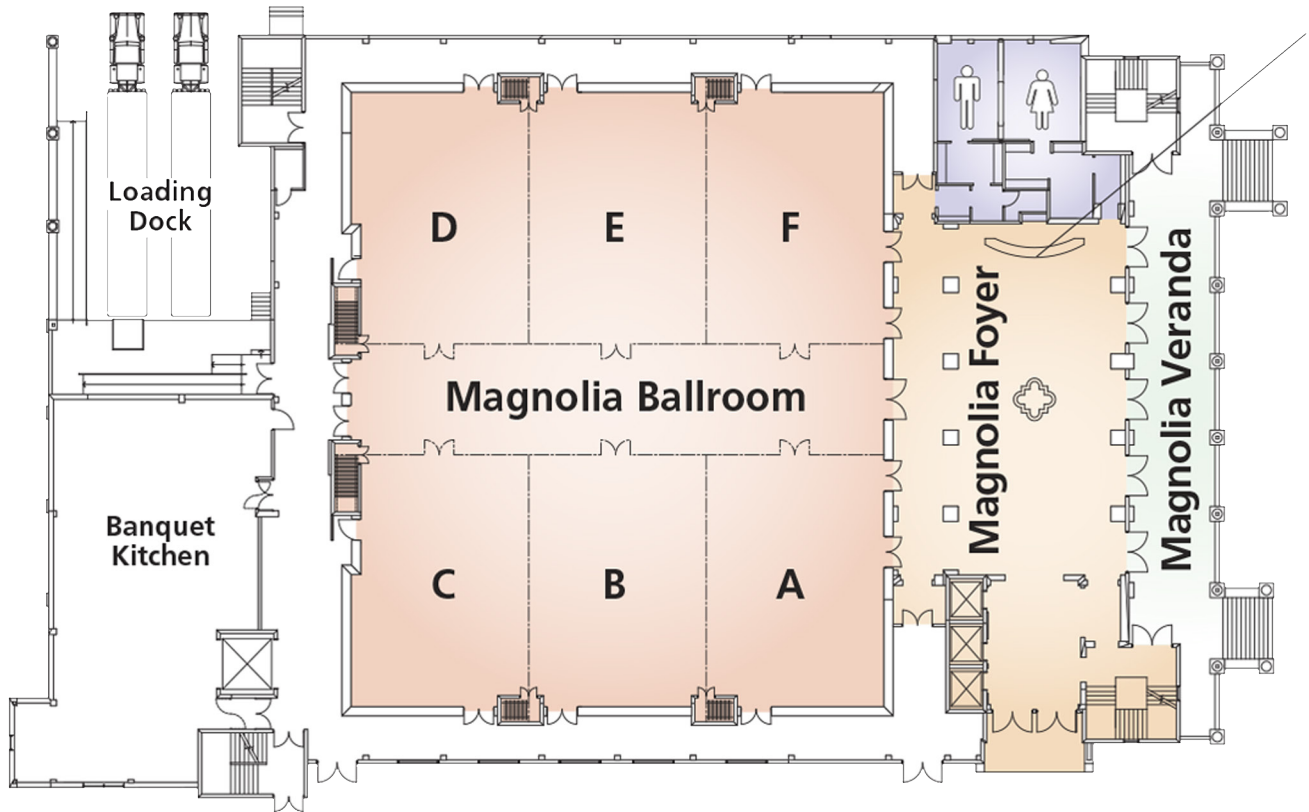
Floor Plan of Conference Center.....	2
Message from AAACE President... ..	4
AAACE Sponsors.....	5
About AAACE.... ..	6
Special Thanks from the AAACE 2021 Conference Chair.....	7
Connection Central, AAACE Mobile App.....	8
Honors & Awards.....	9
AAACE Partners.....	18
CIAE Presentation.....	21
CDLT Pre-Conference Symposium.....	23
CPAE Program	25
Exhibitors	26
Detailed Schedule of Events.....	27
Tuesday - Wednesday	27
Thursday	34
Friday.....	42
Things to do in Sandestin	46

#AAACE

Hashtag

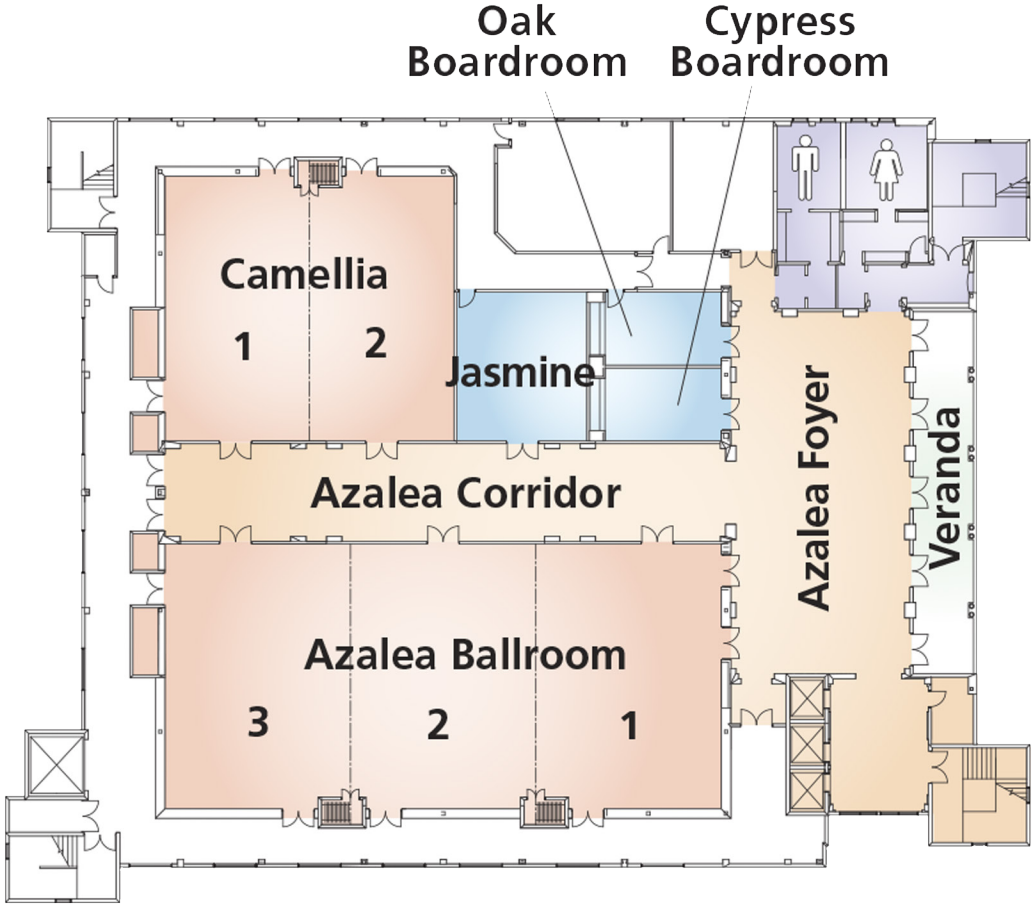
Help promote the AAACE Conference. When posting photos on social media, make sure you use our hashtag #AAACE.

Main Level



- Located on this floor:**
- AAACE Registration Desk
 - Keynote Presentations
 - Breakout Sessions
 - Exhibit Area

Second Level



Located on this floor:

- Breakout Sessions
- Roundtables



Dr. Thomas D. Cox
President 2020-2021

Welcome to the 70th gathering of AAACE!

I want to first express what an honor it is that you have decided to join us in person amid very complex decisions and concerns. Your choice to attend is not surprising to me because members of AAACE are passionate about adult education, our mission, and connecting with each other!

The conference team led by Dr. Petra Robinson has organized a week of presentations, discussions, posters, and events that will ensure a very exciting conference. Their task over the past 2 years has not been easy, yet has been very productive, and this conference, of course, would not be possible without their hard work.

The theme of this year's conference, "Moving the Needle: Digital Divide, Social Justice and Adult Education", will foster opportunities for dialogue and discussion around how AAACE can reflect on itself and possibly "move the needle" toward change in these areas. The keynote panel featuring wonderful experts in our field, Dr. Juanita Johnson-Bailey, Stephanie Bray, Dr. Jon Harbor and Dr. Donald Shalvey, will elucidate these opportunities even further. In addition, participants from all over the United States and 12 other countries will share ideas, scholarly work, and local regional and global efforts related to our theme and more!

While you are here, please take time to connect (or reconnect), collaborate, and enjoy time with one another. Also take time to enjoy the beautiful Florida environment!

Thank you for all you do as adult educators, and for AAACE. It has truly been an honor to serve as president this past year.

Best Regards,

Thomas D. Cox, Ed.D.
President

2021 Sponsors

We would like to thank the sponsors of the 70th Annual 2021 AAACE Conference. We are fortunate to have their support and appreciate their contributions to AAACE, the annual conference, and the field of adult and continuing education.

Titanium Sponsor



Platinum Sponsor



Gold Sponsor



www.aceconference.net

May 19 & 20, 2022



Silver Sponsor



College of Education & Health Professions
Adult & Lifelong Learning



Bronze Sponsor



About AAACE

Vision

The American Association for Adult and Continuing Education (AAACE) is dedicated to the belief that lifelong learning contributes to human fulfillment and positive social change. We envision a more humane world made possible by the diverse practice of our members in helping adults acquire the knowledge, skills, and values needed to lead productive and satisfying lives.

Mission

The mission of the American Association for Adult and Continuing Education (AAACE) is to provide leadership for the field of adult and continuing education by expanding opportunities for adult growth and development; unifying adult educators; fostering the development and dissemination of theory, research, information, and best practices; promoting identity and standards for the profession; and, advocating relevant public policy and social change initiatives.

AAACE Board of Directors

President - Thomas D. Cox

President-Elect - Vanessa Sheared

Past-President - Mary Alfred

Secretary - E. Paulette Isaac-Savage

Treasurer - Charlotte Chase

Commission Directors

Carmela Ochoa

Commission for Adult Basic Education and Literacy (CABEL)

Doris Flowers

Commission for Community, Minority and Non-Formal Education (CCMNFE)

Tricia Berry

Commission for Distance Learning and Technology (CDLT)

Maja Stojanović

Commission for Graduate Students of Adult Education (CGS)

Wendy Griswald

Commission for International Adult Education (CIAE)

Susan Yelich Biniecki

Commission for Professors of Adult Education (CPAE)

Matt Ramirez

Commission for Workforce and Professional Development (CWPD)

AAACE Past Presidents

1983 - 1984 Don Seaman

1984 - 1985 Alan B. Knox

1985 - 1986 Wayne B. James

1987 - 1987 Mary G. Williams

1987 - 1988 Carroll A. Londoner

1988 - 1989 Elaine K. Shelton

1989 - 1990 Jane Evanson

1990 - 1991 William S. Griffith

1991 - 1992 W. Franklin Spikes

1992 - 1993 Peyton Hutchison

1993 - 1994 Ken McCullough

1994 - 1995 Ellen M. Ironside

1995 - 1996 Beverly Grissom

1996 - 1997 John Henschke

1997 - 1998 Lorilee Sandmann

1998 - 1999 Tom Kinney

1999 - 2000 John Boulmetis

2000 - 2001 Margaret Mims

2001 - 2002 Linda Stacy

2002 - 2004 Fran Tracy-Mumford

2004 - 2006 Marjean Buckner

2006 - 2007 Grey Edwards, Jr.

2007 - 2008 Amy D. Rose

2008 - 2009 Douglas H. Smith

2009 - 2010 Catherine Hansman

2010 - 2011 Clare D. Klunk

2011 - 2012 Henry Merrill

2012 - 2013 Linda Morris

2013 - 2014 Steven Schmidt

2014 - 2015 Jean Fleming

2015 - 2016 Margaret Eggleston

2016 - 2017 Steven Frye

2017 - 2018 Jonathan Taylor

2018 - 2019 Larry Martin

2019 - 2020 Mary Alfred

Special Thanks from the Conference Chair

Every year, a group of dedicated AAACE members devote their time and energy to organizing our annual conference. As is customary, the conference chair would publicly acknowledge this work. Having served as conference chair for two unique years, I am especially grateful for the extraordinary efforts and dedication I have witnessed amidst these turbulent times. This is a testimony of the passion our volunteers have for adult and continuing education as well as their commitment to our professional association.

This year, volunteers worked on various typical, as well as innovative elements that make up our conference experience. Some of these included proposal reviews, scheduling sessions, moderating sessions, serving at the registration desk, coordinating the Ambassadors Program, serving as ambassadors, editing conference proceedings, social media marketing, pre-conference planning, and many other important activities that go into creating a successful conference.

From the bottom of my heart, I would also like to say thank you to the leadership of the association and the management team for your support and for all that you have done in helping to make our annual conference a success.



Petra A. Robinson
Chair



Kenda Grover
Vice Chair



Maja Stojanović
AAACE Conference Assistant

2021 Conference Planning Volunteers

CIAE Pre-Conference

Wendy Griswald (Chair)

CDLT Pre-Conference

Tricia Berry (Chair)

CPAE Co-Conference

Susan Yelich Biniecki (Chair)

Review Chairs

Geleana Alston	Michelle Johnson
Paula Barbel	Missy Korduner
Tricia Berry	Xi Lin
Kala Burrel-Craft	Kayon Murray
Monique Cain	Christy Rhodes
Oliver Crocco	Renata Russo Lyons
Raeshan Davis	Anita Samuel
Malaika Edwards	Maja Stojanović
Wendy Griswold	Corina Todoran
Kenda Grover	Kamala Williams
Yvonne Hunter-Johnson	Jill Zarestky
Zackeus Johnson	

Important Information

Sandestin Golf and Beach Resort has Safe Meeting Practices with COVID-19 protocols in place to provide a safe environment for all attendees and guests.

BADGES AND MASKS: Please wear your name badge to all meetings and social activities. You will receive your badge at the AAACE Registration Desk. Per the AAACE Board of Directors, masks are **mandatory** at all AAACE Events in the Conference Center.

SANDESTIN RESERVATIONS: Sandestin Beach Resort check-in is at 4:00 PM. Check-out is 11:00 AM. Individuals checking out after the designated 11:00 AM.

SANDESTIN AMENITIES: Sandestin provides the following free amenities with your reservation: Two (2) complimentary 4-hour bicycle rentals each day of your stay (per unit); One hour free of canoe or kayak rentals and one hour of boogie boards, weather permitting (2 boogie boards per reservation); An hour of free Sandestin tennis resort court time per unit; Free access to the Sandestin Fitness Center (adults only, please); and free Sandestin seasonal resort tram transportation service. To enjoy these exclusive privileges, just present your Resort Card.

Connection Central and Career Corner

Connection Central is expanding its reach at this year's AAACE Conference! Our main goal is to create and enhance the conference experience by connecting and networking at AAACE!

The main location for Connection Central will be in the Prefunction area near the AAACE Registration Desk. Check in for the conference and then come visit us to ask questions, review the conference program, make sure you have the AAACE app downloaded, and start connecting with friends and colleagues!

We are also hosting a Career Corner, so if you are looking for a job or have a position to advertise, make sure to visit the Connection Central.

Please stop by Connection Central after registration - or anytime - and get CONNECTED!

Mobile App / WiFi Information

Sandestin offers complimentary wifi throughout the conference center and hotel.

Once you are logged on to the wifi, download the App if you haven't already done so. Then navigate the event like a pro with the AAACE 2021 mobile app, powered by Whoova.

With the AAACE 2021 mobile app, you can:

- ◆ Stay organized with up-to-the-minute Exhibitor, Speaker, and Event information.
- ◆ Read detailed abstracts for each presentation.
- ◆ Receive important real-time communications from AAACE.
- ◆ Build a personalized schedule and bookmark exhibitors.
- ◆ Take notes.
- ◆ Rate sessions and exhibitors.
- ◆ Access the Hotel Maps and Layouts.
- ◆ Find attendees and connect with your colleagues.
- ◆ Stay in the know and join in on social media with #AAACE.

2021 AAACE Awards

AAACE confers several categories of awards to recognize and honor exemplary contributions to adult and continuing education. The awards are a highly visible component of the association's statement about standards of excellence in the field. The AAACE awards process is under the leadership of the National Awards Committee.

Guiding Principles:

The AAACE awards process is based on:

- ◆ Having a limited, select number of association-wide awards to truly honor and recognize outstanding contributions to the field.
- ◆ Honoring leadership, service, knowledge, learners, and practice in the field.
- ◆ Recognizing both individual and team or collective efforts.
- ◆ Open communication about the awards, the selection criteria, and process for each award.

Malcolm Knowles Award for Outstanding Adult Education Program of the Year

The Adult Completion Program at the University of Arkansas - Fort Smith
Tina Root, Kristin Tardif, and Ken Warden



Dr. Tina Root is an experienced higher education administrator who has spent much of the past decade working to design, implement, and improve educational pathways for adult and non-traditional college students. She currently serves as the director of the Adult Degree Completion program at the University of Arkansas - Fort Smith, where she leads, coordinates, and advises adult learners from inquiry to completion. Additionally, she teaches the University's Prior Learning Assessment Course. She previously served as Director of the Madison Campus of Concordia University in Madison, Wisconsin, where she also served as an undergraduate- and graduate-level faculty member.

Dr. Root is an accomplished recruiter, advisor, and director of higher education programs, having taught adult students in the areas of organizational leadership, marketing, human resources, and ethics. She has presented research at the American Association for Adult and Continuing Education (AAACE) Conference in both 2020 and 2021 on removing barriers for adult students. She is actively involved in the Fort Smith community, engaged with the regional chamber of commerce, and a member of the 2021 Class of Leadership Fort Smith.

She earned her Doctor of Education in 2017 from Edgewood College in Madison, and her Master of Business Administration in Organizational Development and her Bachelor of Science in Public Administration from Upper Iowa University in 2011 and 1994 respectively. She obtained each of these degrees as a non-traditional student while working full-time and raising a family, equipping her with empathy, understanding, and commitment that has empowered her throughout her career in higher education.

Dr. Root and her husband, Ed, have two daughters.

Honors & Awards (continued)

Malcolm Knowles Award for Outstanding Adult Education Program of the Year (continued)



Dr. Kristin Tardif is an Associate Professor, and Program Lead for the Organizational Leadership and Office Management Technology programs at the University of Arkansas Fort Smith. She teaches in the Organizational Leadership program, serves on the university's standing committees on assessment, curriculum development, and faculty awards, and is the Faculty Advisor to the Student Veterans Organization, Salute Honor Society, and Leadership Student Association. Previously she taught at Central Maine Community College and Fort Hays State University, where she helped write the curriculum, and launch the Global Challenge Program.

Dr. Tardif has a Ph.D. in Organizational Leadership from The Chicago School of Professional Psychology. A Masters of Liberal Studies in Organizational Leadership from Fort Hays State University, and a B.S. in Geosciences, and B.A. in History from Fort Hays State University. She is an experienced educator who brings experience and skills into the classroom; a lifetime of international travel, and a long career with a multi-international corporation.

Dr. Tardif was an executive with Nestlé Foods in the corporate affairs and marketing department. Her background spans over 25 years, in corporate affairs, marketing, plant management, division quality management, project management, and natural resource management. She has certificates in Geographic Information Systems, Geo Processing, and Leadership.

Dr. Tardif and her husband Mike are the parents of four daughters and grandparents to seven grandchildren. When Dr. Tardif is not working, she is gardening, kayaking, or hiking.



Dr. Ken Warden serves as the Associate Vice Chancellor for Compliance and Legislative Affairs at the University of Arkansas – Fort Smith, having previously held the roles of Dean of the College of Applied Science and Technology for six years and as the Associate Vice Chancellor for Workforce Development for one year.

Dr. Warden holds a Doctorate of Education in Workforce Development from the University of Arkansas – Fayetteville, a Master's in Education in Education Leadership from Arkansas Tech University, a Bachelor of Science in Vocational Education also from the University of Arkansas -Fayetteville, and an Associates of Applied Science in Automotive Service from Westark Community College (now known as UA-Fort Smith).

Prior to UA-Fort Smith, he conducted professional work as a pyrotechnician and a master certified automotive technician. He spent 17 years working with Arkansas Tech University - Ozark where he held positions including Department Chair of Automotive Service Technology, Business and Industry Coordinator, and Chief Officer for Business and Community Outreach. His work encompassed legislative affairs, project management, community partnerships, leading a National Science Foundation Grant in Viticulture and Enology, leading adult education centers for three counties in western Arkansas, and leading a Career Pathways Program.

He has been married to his wife Cassandra for 27 years and has three adult children. In his time away from work you'll find him working with cattle, tending his backyard flock of chickens, or fishing.

Cyril O. Houle Award for Outstanding Literature in Adult Education

Learning in Adulthood: A Comprehensive Guide (4th ed.)
Lisa M. Baumgartner and Sharan B. Merriam



Lisa M. Baumgartner, Ed.D. is a professor of adult education at Texas State University, San Marcos. She received her doctorate in Adult Education from the University of Georgia in 2000. Her research and writing focus on adult learning and development in marginalized populations. A recipient of the W. K. Kellogg Foundation Cyril O. Houle Scholars Research Grant for Emerging Scholars in Adult Education, she completed a study on civil rights activist Septima P. Clark's lifelong contributions to adult education. She received the Houle O. Cyril Award for Outstanding Literature in Adult Education for the co-authored text *Learning in Adulthood: A Comprehensive Guide* (3rd ed). She was a co-editor of *Adult Education Quarterly* from 2011-2014 and serves on the numerous editorial boards. In 2019, she was awarded the Circle of 50 Award from the Learning, Leadership and Organizational Development Program at the University of Georgia. Her research and scholarship have appeared in *Adult Education Quarterly*, *Learning, Culture, and Social Interaction*, *Gender, Work and Organization*, *Journal of Transformative Education*, *Qualitative Health Research*, *Journal of Ethnographic and Qualitative Research*, *Dialogues in Social Justice*, *The Qualitative Report*, and *Adult Learning*.



Sharan B. Merriam is professor emerita of adult education and qualitative research methods at the University of Georgia. Merriam's research and writing activities have focused on the foundations of adult education, adult development, adult learning, and qualitative research methods. She has published more than 30 books and dozens of chapters and articles and held major editorship roles throughout her career. For five years she was coeditor of *Adult Education Quarterly*, the major research and theory journal in adult education. She was also coeditor for the book series *Professional Practices in Adult Education and Lifelong Learning*. She has won the Cyril O. Houle World Award for Literature in Adult Education for four different books. Various of her books have been translated into Chinese, Korean, Japanese, Farsi, Italian, and French. Based on her widespread contributions to the field of adult education, Merriam has been inducted into the International Adult and Continuing Education Hall of Fame and was the first to receive the American Association of Adult and Continuing Education's Career Achievement award. She has served on steering committees for the annual North American Adult Education Research Conference and the Commission of Professors of Adult Education. She has been a Senior Fulbright Scholar to Malaysia and a Distinguished Visiting Scholar to universities in South Korea, Thailand and South Africa.

Outstanding Service Medallion

Dr. Drew Allbritten



Over a 50+ year career, from 1969-2021, Dr. Drew Allbritten has served as a reforming leader in education and public service. Allbritten specialized in leadership and governance development, economic and community development, and in education and training at the local, state, national and international levels.

Between 1987-2011, he was a 5-time CEO of non-profit organizations: Association for Middle Level Education, Council for Exceptional Children, Georgia Association of Educators/NEA, Iowa Association of Community College Trustees, and especially noteworthy as the Executive Director of the American Association for Adult and Continuing Education (1991-98). He is a AAACE Lifetime Member. Allbritten also served as Government Relations Advisor to the Board of Charles R. Drew University of Medicine and Science, an HBCU in South Los Angeles. For three decades, Allbritten has been a public policy expert: notably advising Administration officials for six U.S. Presidents (Obama, Bush-43, Clinton, Bush-41, Reagan and Ford).

Dr. Allbritten is the founder (2016-present) of the Pacific Adult Learning (PAL) and advises South Pacific leaders on a variety of management issues related to adult education. Before PAL, he was a Visiting Professor (2014-16) at Fiji National University lecturing organization and government leaders in the Executive MBA program; and a Senior Fellow (2011-14) and Coordinator of Public Sector Management at the University of the South Pacific. There, he also contributed to the development of the MBA program, Pacific Island Centre for Public Administration, and established the Pacific Public Administrators Leadership Network.

In public service, Dr. Allbritten held elected and appointed positions including serving as a Presidential Appointee in intergovernmental relations (1981-87). At the federal level, he served the U.S. Department of Housing and Urban Development by leading an array of White House initiatives and worked on dozens of interagency working groups and mismanagement/fraud investigations. Allbritten also drafted federal legislation and regulations, most notably the National Urban Policy, Enterprise Zones, Block Grants, Community Reinvestment, and Affordable Housing. He also advised representatives from 36 nations on U.S. policy issues. Allbritten significantly contributed to advancing Empowerment Communities, School-to-Work, Welfare-to-Work, National Institute for Literacy, and the Congressional reauthorizations for Higher Education, Adult Education, Elementary/Secondary, and Individuals with Disabilities.

At the state level, Allbritten was an elected Michigan legislator in an ethnically diverse district; and served on the Urban Affairs, Social Services, Community Affairs and City Government committees. He also served on several special investigation task forces. Prime among Allbritten's legislative initiatives was his authorship of the nation's first Child Passenger Safety Seatbelt Act.

In education, Dr. Allbritten began his career as a secondary mathematics teacher;

and later as a university lecturer where he taught organizational development, business management, public sector management, political science, and community/economic/urban development. Allbritten led coalitions to advance K-12 and higher education initiatives. At the state level, he was appointed by Governors to serve on PreK-16 Education Reform Commissions and Business-Education Partnerships (GA-IA-MI-VA). At the national level, Allbritten was recognized for authoring the E-rate amendment providing technology funds for K-12 schools, colleges and universities, and public libraries. At the local level, he served on education, business and community advisory boards. Allbritten was also a community advocate for civil rights and equal opportunity. Over his career, Dr. Allbritten has led associations, coalitions, foundation, task forces, collective bargaining and political actions committees. Selected examples include his executive appointments: White House Initiative on Technology and Learning, National Workforce Development Stakeholders Forum, National Center on Student Progress Monitoring, National Coalition for Technology in Education and Training, PBS Literacy Link Advisory Committee, National Coalition for Literacy Board, Committee on Education Funding Board, GED Advisory Board, Watts Gang Task Force, Watt's Dream-Maker Project, LA Mayor's Partnership for Education, and Community College Federal Relations Commission. He helped to co-create NCTET, National Institute for Literacy, and the International Adult Education Hall of Fame.

Dr. Drew Allbritten's papers and publications are archived at the Bird Library's Adult Education Special Collections section at Syracuse University (NY) and at the Grand Rapids (MI) Public Library. He has an earned doctorate (EdD) from Western Michigan University. Allbritten continues to mentor former colleagues and students; and to be a voice for those less fortunate. He helps food/clothing banks, political and equal justice efforts, and environmental initiatives. Since surviving multiple cancers in 2012, he lives in an old village in the south of France with his wife, Professor Susan Kelly.

Commission for Adult Basic Education and Literacy (CABEL)

Research to Practice

Arkbuckle Literacy Leadership (Ardmore) / Aricles James



Alisa Belzer is a Professor at the Rutgers University Graduate School of Education and program coordinator for the online EdM in Adult and Continuing Education. She co-edits *Adult Literacy Education: The International Journal of Literacy, Language, and Numeracy* and has worked as a consultant focused on research to practice activities for ProLiteracy. Widely published in peer-reviewed journals and edited books, the research topics she investigates include adult literacy education policy, professional development, and adult learner experiences. Funded by the Dollar General Foundation, she is currently developing a mobile app for adult developing readers called URead. She is also editing a textbook on adult learning, *Understanding the Adult Learner*, forthcoming from Stylus Publishing in 2022.

Commission for Graduate Students (CGS)

2021 Leadership Award

Alexis Taylor Cherewka



Alexis Cherewka is a PhD candidate in lifelong learning and adult education and comparative and international education at the Pennsylvania State University. Her research explores educators' roles and experiences in adult literacy and language education policy, digital equity and digital literacy, and international adult literacy campaigns. In addition to her work as a graduate research assistant, she has served as a student member of the AAACE Public Affairs Committee, student board member of the Forum of the American Journal of Education, and as a volunteer with community-based, adult literacy programs. During her graduate studies, she has also completed an English Language Fellows Specialist position in Burkina Faso and worked for the Migration Policy Institute on adult education policy research.

Commission for Professors of Adult Education (CPAE)

Early Career Award

Amy Pickard



Amy Pickard is an assistant professor in Indiana University's Adult Education program and a qualitative researcher whose interests center on policy, equity, and instruction in adult literacy/adult basic education. Her years as an adult literacy/HSE teacher in a range of community settings led to her current research interests in the impact of federal and state policy on everyday practice. She is particularly interested in how marginalized adults define their own learning needs and how to support public policy and publicly-funded programs in meeting these needs.

Her research has been published in *Adult Education Quarterly*, *Journal of Literacy Research*, *Educational Policy*, the *COABE Journal*, and is in press at *Adult Literacy Education*. Her current projects explore how federal policy facilitates and constrains public literacy services for adult learners and how adults with reading difficulty have been experiencing digital services during the pandemic.

Commission for Professors of Adult Education (CPAE)

Mid Career Award

Bo Chang



Dr. Bo Chang is an associate professor at Ball State University. Her research interests include knowledge-related topics, different tools in learning, and the social aspect of adult learning in a variety of contexts.

Since 2018, Dr. Chang has authored 10 refereed articles in various high-quality journals, six of which she was the sole author. Dr. Chang's 2018 article on "Patterns of Knowledge Construction" was published in the Tier 1 journal, *Adult Education Quarterly* and won the Imogene Oakes Award for Outstanding Research. This award recognizes scholars whose research contributes significantly to the advancement of adult and continuing education. In this article, Dr. Chang theorizes the processes of knowledge construction as consisting of five patterns: radiation, circulation, simulation, socialization, and contextualization. She also illustrates each pattern with a colorful symbol that conveys the meaning of that process. These patterns offer a potentially useful lens with which to examine knowledge sharing and creation in various social units.

Since 2018, Dr Chang actively serves the various professional organizations in the field of adult education. She has taken leadership positions in CPAE, AAACE and Asian Pre-Conference and served the field in multiple roles. For example, she served as Co-Chair of four awards committees for AAACE and CPAE, as Chair for two conference programs and was on the conference Steering Committee multiple times. She is a reviewer for conference proposals and journal manuscripts. She is a P&T external reviewer, book chapter reviewer, consulting editor for *AEQ* and editorial board member for the following three journals: *Journal of Continuing Higher Education*, *Distance Education* and *Higher Education Studies*. She is also a member of two online and distance education committees.

The highlight of her service is her extensive list (83) of manuscript review for 10 various types of journals since 2018, including some prestigious journals, such as *AEQ*, *International Journal of Virtual and Personal Learning Environment*, *Interactive Learning Environments*, and *Distance Education*. In recognition of her insightful and thorough reviews, she received the 2019 Editor's Choice Award from the *Journal of International Students*.

Dr. Chang has also had leadership roles in various services at Ball State university. Since 2018, she has served on about 14 committees, including service as the Chair of the Ball State University Research Committee.

Commission for Professors of Adult Education (CPAE)

Career Achievement Award

Mary Alfred



Mary V. Alfred is Professor and Interim Department Head, College of Education and Human Development of Texas A&M University. Her academic program is Adult Education and Human Resource Development where she also serves as Executive Director for the Texas Center for the Advancement of Literacy and Learning. Dr. Alfred joined the faculty of Texas A&M University in 2006, and from 2009 to 2017, she served as Associate Dean and later Executive Associate Dean in the College of Education and Human Development. Dr. Alfred's research interests include international adult education; learning and development among women of the African Diaspora; sociocultural contexts of adult learning; social welfare and economic disparities among low-income and low-literate adults; and issues of diversity, equity, and inclusion in education and the workplace. She has published numerous articles which have appeared in both research and professional publication outlets. Dr. Alfred's authored/co-authored books and special issue journal publications include:

- Advancing the global agenda for human rights, vulnerable populations, and environmental sustainability: adult education as strategic partner
- Black Lives Movement: Implications for anti-racist adult education
- Paradise to regain: Post-Obama insights from women educators of the Black Diaspora.
- Social capital and women's support systems: Networking, learning, and surviving
- Learning in sociocultural contexts: Implications for adults, community, and workplace education
- Immigrant women of the academy: Negotiating boundaries, crossing borders in higher education
- Immigrant learners in adult, post-secondary, and workplace education

Dr. Alfred is a recipient of the CPAE Early Career Award, AAACE President's Award for Exceptional and Innovative Leadership in Adult and Continuing Education, and the ACHE Marlow Froke Award for Excellence in Professional Writing. She was inducted into the International Adult and Continuing Education Hall of Fame in 2016. Dr. Alfred served as President Elect, President, and Immediate Past President of the American Association for Adult and Continuing Education (2019-2021). She received her doctoral degree from the University of Texas at Austin.

Commission for Professors of Adult Education (CPAE)

Career Achievement Award

Lillian Hill



Dr. Lillian H. Hill has worked in adult education for more than 35 years in Canada and the United States. She earned two graduate degrees in adult education, a master's at the University of Toronto and a doctor of philosophy at the University of Georgia. Her work experiences include program development/administration, conference management, faculty development, and teaching in non-credit, professional development programs, as well as undergraduate, professional preparation, and graduate levels. She was the recipient of the CPAE Early Career Award in 2007 and AAACE Imogene Okes Award for Outstanding Research in Adult Education in 2015. She was inducted into the International Adult and Continuing Education Hall of Fame in 2018 and selected for the University of Georgia Circle of 50, honoring 50 alumni for the 50th anniversary of the Adult Education Program in 2019. She is a professor of Education at the University of Southern Mississippi and is past president of Faculty Senate.

Work full time?

Want an advanced degree?

We could be your solution!

EdPsychONLINE

A completely online program designed for those pursuing professional careers in a variety of educational settings with concentrations in Adult Education and Applied Educational Psychology.



THE UNIVERSITY OF
TENNESSEE
KNOXVILLE

DEPARTMENT OF EDUCATIONAL
PSYCHOLOGY & COUNSELING

Visit our booth for more information!

2021 Partners

AAACE is thrilled to announce our strategic partnerships with other organizations in our field.

Academy of Human Resource Development (AHRD)

The Adult Higher Education Alliance (AHEA)

Canadian Association for the Study of Adult Education (CASAE)

Commission on Adult Basic Education (COABE)

eLearn Magazine

European Association for the Education of Adults (EAEA)

European Continuing Education Network (EUCEN)

European Society for Research on the Education Adults (ESREA)

Higher Education Lifelong Learning Ireland Network (HELLIN)

International Association for Continuing Education and Training (IACET)

ProLiteracy

Universities Association for Lifelong Learning (UALL)



College of Human
Sciences & Education



FIERCE CHANGES LIVES

Whether you want to improve education for pre-K, K-12, or college classrooms, advance adult and career education, promote health and wellness, develop better places to work, or strengthen families and communities, the LSU College of Human Sciences & Education will give you the academic expertise and internship experiences to achieve your goals. Our world-class faculty, centers, and institutes are dedicated to helping you achieve your dreams.

We are not sideline sitters. We are changemakers. **FIERCE FOR THE FUTURE**

Want to learn more about becoming a **changemaker?**

Visit us at the exhibitors' space.

lsu.edu/chse | lsu.edu/ldi | lsu.edu/slhrd

Returning this year...

Poster Presentations

Wednesday, October 6th from 5:00 pm - 6:30 pm
Magnolia DEF

Posters will be featured during the Wednesday evening Wine & Cheese Reception at the 2021 AAACE conference providing the opportunity to interact with attendees as they celebrate the rich landscape of adult learning.

What is a poster presentation?

A poster depicts one element of a research study's findings, or a project, program, or theory. Effective posters draw viewers' attention with color, graphics, and images, using just enough text to summarize the details. During the session, presenters have a "one-breath" statement to market their poster's topic and importance to passersby, who hopefully will be interested enough to spend a few minutes reading the poster and discussing its contents.

Why present a poster?

By popular demand, the 2021 AAACE conference poster presentation coincides with the Wednesday Wine and Cheese Reception to provide a relaxed, socially-engaged atmosphere for presenters to:

- ❖ Network one-on-one with all conference attendees
- ❖ Share new approaches and/or best practices with colleagues
- ❖ Discuss how "lessons learned" are being used to improve programs
- ❖ Showcase programs or projects to current and potential funders
- ❖ Disseminate information about their research, program, or project to a broader audience
- ❖ Enjoy some snacks while interacting with their audience

The top student poster in each of the following three categories will be recognized at the awards luncheon Thursday, October 7:

- (a) **Highly Relevant, Novel, or Insightful Topic**,
- (b) **Standout Conceptual or Methodological Framework**, and
- (c) **Significant Findings or Lessons Learned**.

Proud Sponsor of this AAACE Conference



In Memoriam...

AAACE would like to extend our heartfelt sympathies to those members who are no longer with us. We know their loving presence and spirit are with us today and always.



CIAE PRE-CONFERENCE AT-A-GLANCE

Camellia I and II

Monday: Check in from 8:30 am - 9:30 am; Sessions from 9:00 am - 6:00 pm

Tuesday: Sessions from 9:00 am - 4:00 pm (Combined with CDLT)

Exploring Transformative Learning Among Chinese Immigrant Mothers in Canada and the US During the Covid-19

Yidan Zhu, Yuanlu Niu

Imagining New Worlds Together: Leveraging Technology to Decolonize Transcultural Learning

Jean Kirshner, Debbie Blair, William Castillo, Ofni Tzul

Stimulating the Complications of Digital Divide for Sustainable Adult Education in a Developing Country

Kofo Aderogba, Adekunle Adekunle A Adeniyi, Adebimpe Adebimpe Alabi

Coronavirus 2019 (COVID-19), New Normal and Adult Learning: Challenges and Opportunities in an Agrarian Community

Kofo Aderogba

Digital media educational processes of health and nursing professionals. Current developments in Germany

Astrid Seltrecht, Franziska Josupeit

Reframing the Civil Rights Historical Narrative as Human Rights Education through a Community of Practice

Leslie Cordie, Richard Richard Burt, Keith Hebert

Teaching in a language school in Serbia: Practical considerations based on the andragogical process design

Maja Stojanović, Petra A. Robinson

Probing More Deeply a Major Historical Foundation of Adult Education Internationally and in the USA

John Henschke

Emotional abuse and nontraditional female adult learners: Moving the needle forward: A systematic review

Nancy Truett

International Organizations and Teachers' Professional Development in Post COVID-19 Nigeria

Frances Anno Alimigbe, Mejai Bola Dr. Mejai Bola Avoseh

AUTHORS AND TOPICS FOR THE 2021 PRE-CONFERENCE

In keeping with its tradition, CIAE has again assembled an array of authors and topics bestriding the global and gigantic spread of adult and continuing education.

Our authors/topics are drawn from the following countries:

- ❖ Belgium
- ❖ Belize
- ❖ Burkina Faso
- ❖ Canada
- ❖ China
- ❖ Germany
- ❖ Ghana
- ❖ Italy
- ❖ Jamaica
- ❖ Nigeria
- ❖ Norway
- ❖ Serbia
- ❖ United States

CIAE PRE-CONFERENCE AT-A-GLANCE

Sessions

Micro-Credentialing in Adult Learning: International Considerations

Billie McNamara, Qi Sun

COVID-19 and Implementation of Online Learning in Ghana: Perspectives of Undergraduate Students in Higher Education

Linda Tsevi

Culturally Proficient Professional Learning: Lessons learned from Africa

Corinne Brion

A novel taxonomy to assess engineering students: the Face-it project

Marica Liotino, Monica Fedeli

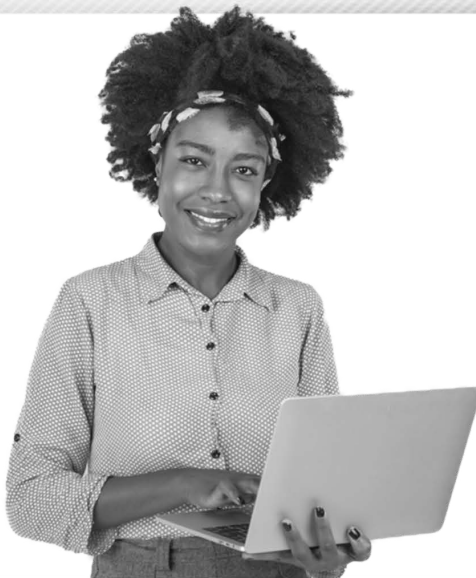
A Triadic Worldview? The Misconception and Bias of Universality in Knowles' Andragogy

Sabine Dantus

Experiential Learning in International Contexts: Effective teaching & learning strategies for Public Health & Nursing students

Sara Bano, John Dirkx, Qing Xia

Complete ESL Core Curriculum - Completely Aligned, Completely Online.



Ten core curriculum courses that target all six Adult ESL levels in Reading, Listening, Speaking, Writing and Grammar.

Standards based, comprehensive, multi-media curriculum supported with Lesson Plans, Workbooks, Guided Discussions, Classroom Handouts, Classroom Projects, Role Plays, Formative and Summative Assessments, and more.

Aligned to CCRS, CASAS Competencies, CEFR, ELPS

FIRST DISCOVERIES

Literacy/Foundations NRS Level 1

BASIC 1

Low Beginning NRS 2

BASIC 2, 3

High Beginning NRS Level 3

INTERMEDIATE 1, 2

Low Intermediate NRS Level 4

INTERMEDIATE 3, ADVANCED 1


High Intermediate NRS Level 5

ADVANCED 2, 3

Advanced NRS Level 6 and above

ed English Discoveries

The Complete English Language Learning Solution.

 Edusoft
A subsidiary of ETS,
the creator of the
TOEFL® and TOEIC® tests



www.EnglishDiscoveries.net



800-469-9154



info@EnglishDiscoveries.net



AAACE Commission for Distance Learning and Technology

Will join the CIAE Conference on Tuesday, October 5, in Camellia I and II

Director: Tricia Berry, Purdue Global

In recognition of the growing influence of online and other distance learning technologies on adult learning, AAACE supports the CDLT to provide members with opportunities to share best practices and research on how adults are learning in networked and other technological learning environments. Our goal is to increase communication and collaboration among adult educators across academic, workplace, community, and other settings who have an interest in sharing their knowledge and practice about learning with virtual technologies.

CDLT 2021

Will join the CIAE Conference on Tuesday, October 5, in Camellia I and II

8:30 am - 9:30 am CDLT Registration
9:00 am - 4:00 pm CIAE Pre-Conference with CDLT



INDIANA UNIVERSITY
SCHOOL OF EDUCATION



Whitney Humphrey
M.S.Ed in Adult Education '20



The **Adult Education** faculty understood my busy schedule and did everything they could to ensure my success.

go.iu.edu/adulted



ENGEN



Anytime,
anywhere access



Adaptive
learning



Program and
performance visibility



Relevant and
real-time content

Removing barriers for speakers of other languages by working with employers to upskill immigrants, refugees, and other underrepresented populations with the English skills they need to fill talent vacancies.

GetEnGen.com

ADULT LEARNING AND LEADERSHIP GRADUATE PROGRAMS

In today's rapidly changing world, organizations and universities need people who can teach and lead.

- ✓ **M.S. program (33 credits)**
Comprised of 15 required credit hours focused on developing teaching expertise and 18-credit hours of electives to allow for customization of a concentration area
- ✓ **Ph.D & Ed.D. program (90 credits)**
Prepares students for advanced careers in education or industry



These programs expand your skills in instructional methods and leadership by focusing on the human dimension skills.

KANSAS STATE UNIVERSITY
College of Education

For more information, email alearnlead@ksu.edu or visit:
coe.k-state.edu/academics/program-areas/adult-learning-leadership

CPAE

AAACE Commission for Professors of Adult Education

The following five purposes define the purpose and work of the Commission:

- To act as a vehicle for strengthening and supporting excellence in academic programs in adult education.
- To identify and disseminate resources that support adult education as a field of study, research and practice.
- To provide opportunities for the professional development of professors of adult education.
- To study and disseminate positions on social issues of concern to adult education.
- To provide a forum for critical reflection and dialogue on scholarship and practice that reflects the diversity in adult education.

An additional and important purpose of CPAE is to provide a caring, supportive, and collegial community for professors of adult education. We seek to achieve this through our annual meeting in conjunction with the annual AAACE conference. CPAE meetings include sessions designed to address current concerns of members in addition to building community and conducting the business of the Commission. Active Special Interest Groups (SIGs) include critical theory, faculty development, human resource development, instructional improvement, international/intercultural issues, research & theory, women's research, and neuroscience. There is also often an additional less formal meeting at the annual Adult Education Research Conference (AERC) in early June. The Commission maintains an active listserv used to disseminate information to members and others concerned with the preparation of adult educators.

Director: Susan Yelich Biniiecki, Kansas State University
On-Site Contact: Steven Schmidt, East Carolina University

THURSDAY, OCTOBER 8, 2021

2:15 pm - 4:00 pm CPAE Workshop

5:30 pm - 6:30 pm CPAE Reception

6:30 pm - 7:30 pm CPAE Business Meeting

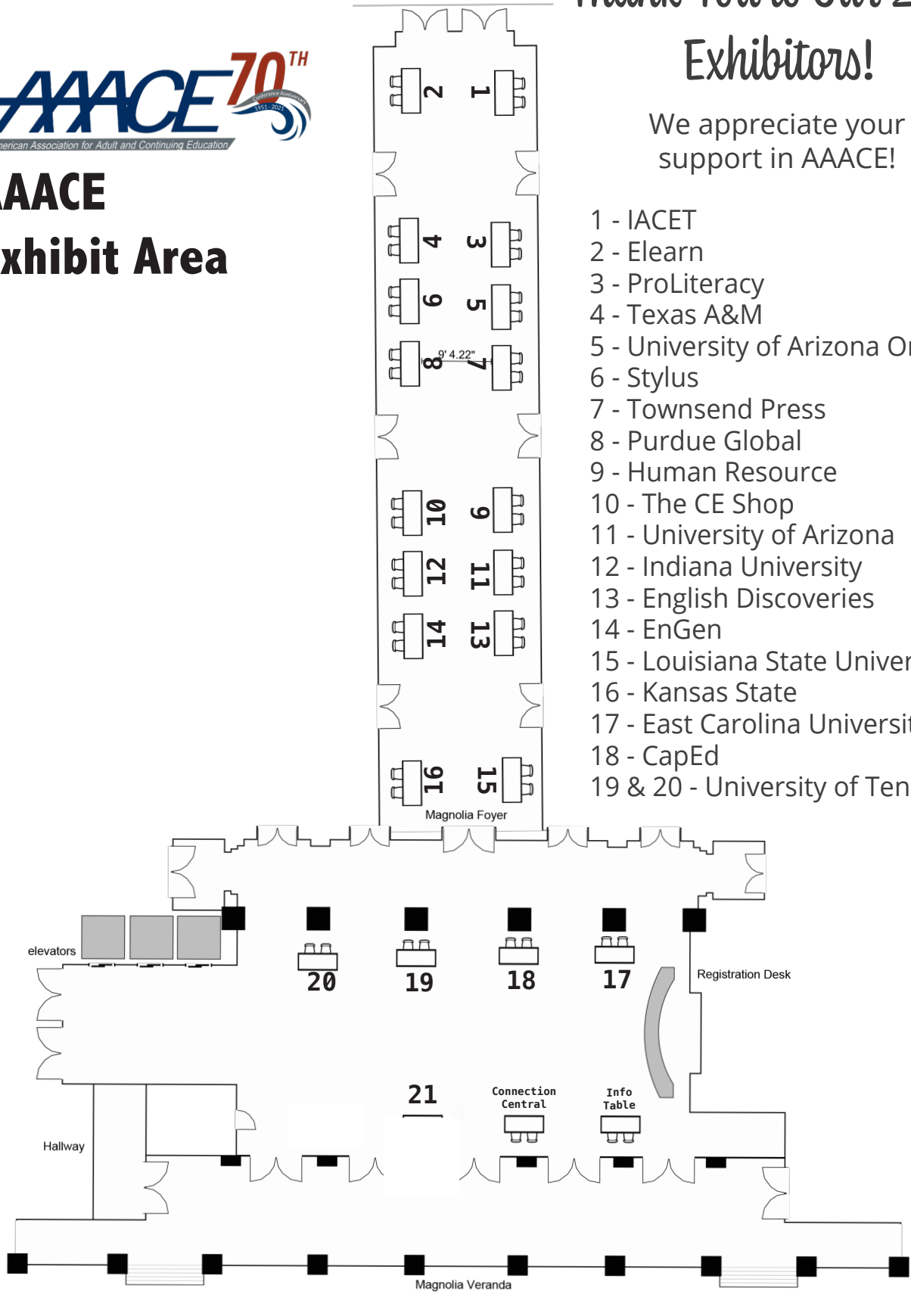


AAACE Exhibit Area

Thank You to Our 2021 Exhibitors!

We appreciate your support in AAACE!

- 1 - IACET
- 2 - Elearn
- 3 - ProLiteracy
- 4 - Texas A&M
- 5 - University of Arizona Online
- 6 - Stylus
- 7 - Townsend Press
- 8 - Purdue Global
- 9 - Human Resource
- 10 - The CE Shop
- 11 - University of Arizona
- 12 - Indiana University
- 13 - English Discoveries
- 14 - EnGen
- 15 - Louisiana State University
- 16 - Kansas State
- 17 - East Carolina University
- 18 - CapEd
- 19 & 20 - University of Tennessee



Tuesday, October 51:00 pm - 5:30 pm**AAACE Registration Desk Open**

(open through reception)
Magnolia Foyer

3:30 pm - 4:30 pm**Ambassadors Meet-Up**

Jasmine

4:30 pm - 5:30 pm**Grand Opening Cocktail Party**

(cash bar)
The Grand Lawn

6:00 pm - 8:00 pm**Dine Arounds****Various Restaurants at Baytowne Wharf**

(pre-registration required prior to conference) (meet up at 5:30 pm on the Grand Lawn)

Wednesday, October 67:00 am - 8:00 am**Hot Breakfast**

Magnolia Foyer

Editors Current Trends - Grab your breakfast and join us!

Jasmine

7:00 pm - 5:00 pm**AAACE Registration Desk Open**

(open through reception)
Magnolia Foyer

8:00 am - 8:25 am**Use digital marketing to show ROI and drive the case for budget support**

Alison Zeringue
Program Management and Administration
Concurrent Session (25 minutes)
Azalea I

Opening the aperture: Moving adult education away from an anti-Black racism mentality

Lisa Merriweather, Daryl Privott, Edith Gnanadass, Dianne Ramdeholl
Access and Equity in Adult Education
Concurrent Session (25 minutes)
Azalea II

Re-imagining culturally competent ABE instruction through CHAT and expansive learning

Ramo Lordeni, Kerrin Ingram
Adult Basic Education and Literacy Education
Azalea III

Questioning their age: Impact on being an adult college student

Laura Bennett
Women's Issues
Concurrent Session (25 minutes)
Camellia II

A narrative inquiry on the experiences of Title IX coordinators in the southeastern United States

Mitsunori Misawa, Laura Bryant
Colleges and Universities
Concurrent Session (25 minutes)
Magnolia D

Their time, their platform: Addressing hidden curriculum skills through social media

Renee Montgomery, Christina Wray
Technology and Online Learning
Concurrent Session (25 minutes)
Magnolia E

The "Adult" Learner: Challenging Conventions to Champion Change

April Paschall, Christine Billings
Colleges and Universities
Concurrent Session (25 minutes)
Magnolia F

Roundtables (three)

Jasmine

(One of Three) Adult learners perceptions of mathematics

Brooke Istas
Adult Basic Education and Literacy Education

(Two of Three) Poetry and adult learning: A creative method of exploration

Mason Murphy
Colleges and Universities

(Three of Three) Social and structural change through leadership development using reflection within mentoring activities

Rachel Wlodarsky, Davin Carr-Chellman
Professional Development and Continuing Education

8:30 am - 8:55 am**A content analysis of graduate course syllabi: Teaching critical dialogue skills**

David Willis, Josie L. Andrews
Graduate Student Education
Concurrent Session (25 minutes)
Azalea II

8:30 am - 8:55 am

Transition to Blended Learning in Part-Time Graduate Programming

William Boozang, Brianna Brianna Parsons
Graduate Student Education
Concurrent Session (25 minutes)
Azalea III

Cameras on: Engagement strategies for taking professional development sessions online

Kimberly Wolfe, Shelli Henehan, Micki Voelkel, Ronnette Haynes
Access and Equity in Adult Education
Concurrent Session (25 minutes)
Camellia I

Low stakes quizzing: A study of the experience and impact for adult learners

Thomas Rausch, Leann Kaiser
Research to Practice
Concurrent Session (25 minutes)
Camellia II

Adult Education Approaches to Address Health Disparities among Black/African Americans amid COVID-19

Lilian H Hill, Rebecca Holland
Community, Minority, Non-Formal/Informal Education, and Cooperative Extension
Concurrent Session (25 minutes)
Magnolia D

From ordinary to profound: Moments that take root

Heather Maib, Heather Heward, Justin Braun, Jonathon, Laura Holyoke
Adult Development
Concurrent Session (25 minutes)
Magnolia E

Leadership in the Agile, Digital, Learning Organization

Robin Hurst, Holly Jackson
Human Resources and Workforce Development
Concurrent Session (25 minutes)
Magnolia F

Roundtables (three)

(One of Three) **The Humble Expert**

Samantha Ansley
Professional Development and Continuing Education

(Two of Three) **Poetic Narratives for Midcareer Women**

Leading through Impostor Phenomenon
Michelle Glowacki-Dudka, Amy Baize-Ward
Women's Issues

(Three of Three) **Implementing a systematic review process for integrating eLearning tools: Lessons learned.**

Bethany Cleveland
Technology and Online Learning



Join us for a peek into the future at our **Adult Centred Education Conference** in beautiful British Columbia.

Two days of curated in-person sessions with great people, great ideas, and great connections.



aceconference.net May 19 & 20, 2022

9:00 am - 9:25 am

National Study of Critical Issues Facing Community College Continuing Education Professionals

David Deggs, Michael T. Miller, Kenda S. Grover
Community, Vocational, and Technical Colleges
Concurrent Session (25 minutes)

Azalea I

Facing the "F Word": Feminist Identity in Educational Leaders

Micki Voelkel, Shelli Henehan
Women's Issues
Concurrent Session (25 minutes)

Camellia I

Partner and Affiliate Meeting

Jasmine

The Power of our Self-Story

Blaine Cronrath, Jim Mr. Jim Mahler
Research to Practice
Concurrent Session (25 minutes)

Magnolia D

Rethinking adult learning for social justice reform

Nicole Edwards, Susan Dennett
Professional Development and Continuing Education
Concurrent Session (25 minutes)

Magnolia E

Employability: A comparative case study on teaching soft skills to adult learners in workforce training

Jacynth Hanson
Human Resources and Workforce Development
Concurrent Session (25 minutes)

Magnolia F

9:30 am - 9:55 am

Adult basic education: Competency-based course to support adult learners transitioning to college programs

Sam May-Varas
Adult Basic Education and Literacy Education
Concurrent Session (25 minutes)

Azalea II

Teaching Information Synthesis in Online Adult Literacy Education: Incorporating Learners' Strategies and Rubric-Based Assessment

Hany Zaky
Adult Basic Education and Literacy Education
Concurrent Session (25 minutes)

Azalea III

Establishing a culture of community learning and literacy: Exploring the learning city model

Ramo Lordeni
Community, Minority, Non-Formal/Informal Education, and Cooperative Extension
Concurrent Session (25 minutes)

Camellia I

Postsecondary access without a high school diploma: Lessons from the Louisiana's five for six scholarship

Ashley Clayton, Emily Campbell
Access and Equity in Adult Education
Concurrent Session (25 minutes)

Magnolia D

International, cross-cultural learning and teaching beyond COVID-19: Insights from the research on virtual study broad/exchange

Joellen Coryell, Philippe Legault
Colleges and Universities
Concurrent Session (25 minutes)

Magnolia E

Facilitating adult & organizational learning through andragogy: A history, philosophy & major themes journeys

John Henschke
Colleges and Universities
Concurrent Session (25 minutes)

Magnolia F

Roundtables (three)

Jasmine

(One of Three) Investigating the development of adult learner agency through the transfer process

David Deggs, Michael T. Miller
Colleges and Universities



PURDUE GLOBAL
UNIVERSITY

**CONTINUE YOUR
EDUCATION WITH
PURDUE UNIVERSITY GLOBAL**

Public • Nonprofit • 100% Online

- Master's degrees
- Bachelor's degrees
- Certificate programs

Find out if your prior learning, workplace training or certifications qualify for credit.

PurdueGlobal.edu.

Purdue Global is regionally accredited. Please see our website for additional information about institutional and programmatic accreditation. See Catalog, PurdueGlobal for Prior Learning Assessment policy. Purdue Global does not guarantee transferability of credit.

Work full time?

Want an advanced degree?

We could be your solution!



The PhD in educational psychology and research with a concentration in Adult Learning is designed for people interested in any setting where adults can be found learning.



THE UNIVERSITY OF
TENNESSEE
KNOXVILLE 
DEPARTMENT OF EDUCATIONAL
PSYCHOLOGY & COUNSELING

Visit our booth for more information!

(Two of Three) **Hybrid, online, hyflex: Making sense of modalities to expand your inclusive teaching practices**

Jacqueline McGinty, Scott Scott R Hargraves
Technology and Online Learning

(Three of Three) **Contributing to the DEI movement as a white-identifying individual**

Missy Korduner
Access and Equity in Adult Education

10:00 am - 10:30 am

Networking Break with Exhibitors

Magnolia Foyer

10:30 am - 12:00 pm

General Keynote Session - Moving the needle: Digital divide, social justice, and adult education

Juanita Johnson Bailey, Stephanie Bray, Jon Harbor, Donald Shalvey
Magnolia ABC

12:00 pm - 1:30 pm

Lunch on your own

Past Presidents' Luncheon (invitation only)

Cypress Board Room

1:30 pm - 1:55 pm

Being and becoming tenured: Stories of the endangered professor.

David Willis
Professional Development and Continuing Education
Concurrent Session (25 minutes)
Azalea I

Is this our new normal? Utilizing student perspectives to explore gender inequities and engagement

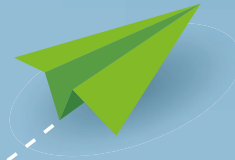
Monique Bracken, Justina Buck, Kiyun Kiyun Han
Access and Equity in Adult Education
Concurrent Session (25 minutes)
Azalea III

When tragedy becomes the teacher: What we can learn from challenging life circumstances

Katie Wilson, Michael Kroth, Davin Carr-Chellman
Adult Development
Concurrent Session (25 minutes)
Camellia II

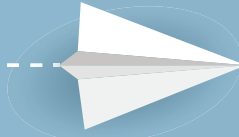
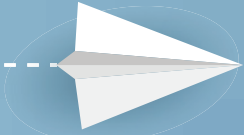


academy of human resource development

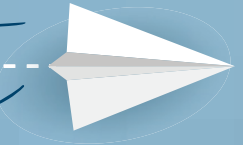


AHRD 2022

INTERNATIONAL RESEARCH CONFERENCE IN THE AMERICAS



Save the Date



Registration
opening in
November at
www.AHRD.org.

Transforming Individuals and Organizations:
RETHINKING THE MEANING OF WORK

February 23-26 | Arlington, Virginia



Presenter: Dr. Ramon Goings

Dr. Ramon Goings is the founder of the Done Dissertation Coaching Program (www.thedonedissertation.com) which provides 1:1 and group dissertation coaching and editing services for doctoral students and university partners. Additionally, Dr. Goings currently serves as Assistant Professor in the Language, Literacy, and Culture interdisciplinary doctoral program at the University of Maryland, Baltimore County. Dr. Goings is an expert on gifted/high-achieving Black male student success in PK-20 settings and diversifying the teacher and school leader workforce. Dr. Goings is the author of over 60 scholarly publications including four books. His scholarship has been featured in leading academic and popular press outlets including: Teachers College Record, Adult Education Quarterly, Gifted Child Quarterly, Inside Higher Ed, Education Week, and Diverse: Issues in Higher Education. His most recent research on

Black male adult learners won the 2019 Imogene Okes Award from the American Association for Adult and Continuing Education which honors a scholar whose research contributes significantly to the advancement of adult and continuing education. Along with his scholarship Dr. Goings served as the Editor-In-Chief of the Journal of African American Males in Education from 2017-2020, was named a 2017 Emerging Scholar by Diverse: Issues in Higher Education, and received the 2016 College Board Professional Fellowship. More information on Dr. Goings' scholarship can be found at www.ramongoings.com

Prior to working in higher education, Goings was a music education and special education teacher in several urban school districts including Baltimore City Public Schools and was a foster care and youth probation counselor/advocate in New Haven, Connecticut. In 2013 he served as a fellow with the White House Initiative on Educational Excellence for African Americans.

He earned his Doctor of Education degree in urban educational leadership from Morgan State University, Master of Science in human services from Post University, and Bachelor of Arts in music education from Lynchburg College (now University of Lynchburg) where he now also sits on the university's board of trustees.

AAACE
Silver
Sponsor



UNIVERSITY OF
ARKANSAS

College of Education
& Health Professions
Adult and Lifelong Learning

2:20 pm - 2:45 pm

Roundtables (Three)

Jasmine

(One of Three) Continuing learning for adult women

Wenjia Dong, Yankun Yankun He, Fengling Liu
Women's Issues

(Two of Three) Exploring STEM teachers' development of technological pedagogical content knowledge (TPCK) in the post COVID-19 era

Yi-Jung Lee, Yuanlu Niu
Professional Development and Continuing Education

(Three of Three) Caregiving: Changing roles and responsibilities

Kamala Williams
Adult Basic Education and Literacy Education

1:30 pm - 2:15 pm

CIAE General Membership Meeting

Magnolia ABC

JTED Editors Meeting

Camellia I

2:00 pm - 2:15 pm

Strengthening engagement among first-generation international adult learners through campus services and programming

Anil Lalwani, Wendy Green, Sadiqkhan Mohammed
Colleges and Universities
Concurrent Session (15 minutes)
Azalea I

Digital badges: A simple tool to improve student motivation and performance

Kelly McCarthy
Technology and Online Learning
Concurrent Session (15 minutes)
Azalea II

Formation and education: Learning transfer in a religiously based post-baccalaureate teacher professional learning (PL) program

JoAnna Schofield, Corinne Brion, Davin Carr-Chellman, Peggy
Human Resources and Workforce Development
Concurrent Session (15 minutes)
Azalea III

Backward Design and Rapid Instructional Design for Asynchronous Project-Based Learning

Dawn Dubruiel, Valerie Dr. Valerie Bryan
Technology and Online Learning
Concurrent Session (15 minutes)
Camellia II

What do adult learners want from their virtual classroom?

Susan Dennett
Technology and Online Learning
Concurrent Session (25 minutes)
Azalea I

"I hope "APA Style" and I can be friends. I didn't intend to plagiarize"

Tina Root
Access and Equity in Adult Education
Concurrent Session (25 minutes)
Azalea II

Beyond "Just a Seat at the Table" Designing inclusive learning environments for adult learners

Jacqueline McGinty, Jess Oest, Jennifer J. Bohland-Anhalt, Kimberly Rehek
Access and Equity in Adult Education
Concurrent Session (25 minutes)
Azalea III

Persistent punctuation (and Grammar) problems that perturb professors: Developing graduate students as writers

Joann Olson, Christy M. Rhodes, Kathy Lohr
Graduate Student Education
Concurrent Session (25 minutes)
Camellia II

Roundtables (two)

Jasmine

(One of Two) Why didn't I think of that: Discussing informal learning among faculty colleagues in social settings

Adrienne Button, Liz Harrison
Community, Minority, Non-Formal/Informal Education, and Cooperative Extension

(Two of Two) The returning citizens' perceptions on citizenship education and rights

Rachel R. Gray
Community, Minority, Non-Formal/Informal Education, and Cooperative Extension

2:50 - 3:15 pm

Exploring social justice through adult digital literacy and algorithms

Catie Carlson, Haijun Kang
Technology and Online Learning
Concurrent Session
Azelea I

Meta-literacy: Now is the time, today is the day.

Kathy Lohr, Steve Schmidt
Professional Development and Continuing Education
Concurrent Session
Azelea II

The paintbrush of change

Felicia Young
Community, Minority, Non-Formal/Informal Education,
and Cooperative Extension
Concurrent Session
Azelea III

Examining the self for adult learning research and instruction

Daniel Parker
CPAE: Research & Theory
Concurrent Session
Camellia I

Lifelong pervasive learning futures: A futures examination of workforce needs

M. Jayne Fleener
Adult Basic Education and Literacy Education
Concurrent Session
Camellia II

ROUNDTABLES (three)

Jasmine

(One of Three) **A blended learning and support instructional model for immersed and justice involved learners**

Vertricia Harris
Adult Basic Education and Literacy Education

(Two of Three) **Applying the therapeutic communications framework: An examination of communication obstacles in social justice education.**

Cheri Hatcher
Community, Minority, Non-Formal/Informal Education,
and Cooperative Extension

(Three of Three) **Let's talk digital: Intergenerational conversations about technology**

Rey Lopez, Glenna Bruun, Esther Pippins, Humberto de Faria Santos
Research to Practice

5:00 pm - 6:30 pm

Poster Sessions and Wine and Cheese Reception

see page 35 for details regarding Poster Sessions

Thursday, October 7

7:00 am - 8:00 am

Continental Breakfast

Magnolia Foyer

CCMNFE

Cypress Boardroom

8:00 am - 4:00 pm

**AAACE Registration Desk Open
Exhibits Open**

Magnolia Foyer

8:00 am - 8:25 am

Illustrating the efficacy of social change initiatives in higher education using quantitative methodologies in Excel

Julie M. Gallart, Kevin M Roessger
Colleges and Universities
Azelea I

The centrality of culture in learning transfer

Corinne Brion
Professional Development and Continuing Education
Azelea II

Universal design for learning in reflective journaling and discussions for adult learners in online courses

Brianne Jackson, Deverick Strand
Access and Equity in Adult Education
Camellia II

Perceptions of online readiness for faculty with online teaching experience during the pandemic

David Des Armier, Jr., Damiao Zoe Xu
Technology and Online Learning
Magnolia D

Class discussions in the age of tribalism

Sarah Strom Kays, Teresa Hayes
Undergraduate Student Education
Magnolia E

Learning and problem solving in digital contexts: An evaluation of Immunization Training Challenge Hackathons

Karen Watkins, Lorilee Sandmann, Cody Aaron Dailey, Beixi Li, Sung-Eun Yang
Health Professionals
Magnolia F



2021 AAACE POSTER SESSIONS

5:00 PM - 6:30 PM

The top poster in each of the following three categories will be recognized at the awards luncheon Thursday, October 7:

- 1 Highly Relevant, Novel, or Insightful Topic
- 2 Standout Conceptual or Methodological Framework
- 3 Significant Findings or Lessons Learned

AWARDS WILL BE PRESENTED AT
THE AAACE AWARDS LUNCHEON ON
THURSDAY, OCTOBER 7.

A Practical Approach to Onboarding Junior Faculty
Russell Wartalski, Noreen Powers (*Colleges and Universities*)

Adopting a Veteran Inclusive Campus
Wayne N. Taylor (*Military Education*)

Cultivating equitable knowledge ecosystems in the context of today's learning organizations: A review of literature
Renee Ness (*Access and Equity in Adult Education*)

Cultivating equitable knowledge ecosystems in the context of today's learning organizations: A review of literature
Renee Ness (*Access and Equity in Adult Education*)

Discovering Unknown reflection: Experiences of online learning for international students - Yankun He, Shellie Flenniken, Wenjia Dong, Yuewei Shi, Fengling Liu (*Undergraduate Student Education*)

Experiencing the story: Immersive experiences and virtual reality in narrative learning
Mary Catherine Harvison (*Technology and Online Learning*)

Guiding Nontraditional Students with Diminished Self-Perception Toward Learner Agency and Self-Actualization Using Mentored Self-Directed Methods - Billie R McNamara (*Adult Development*)

Maximizing transfer of learning in online professional development sessions
Kimberly Rehak (*Professional Development and Continuing Education*)

Mitigating Issues of Power and Privilege: Adaptations for Qualitative Research in Virtual Spaces - Cindy Peña, Jessica Quintero, Tess Pantoja Perez, Elizabeth Castañeda (*Research to Practice*)

New Cracks in the Digital Divide: Access for disadvantaged adults seeking education and jobs
Olivia Miller (*Access and Equity in Adult Education*)

Saudi teachers' experiences transitioning to fully remote learning due to COVID-19: Issues and challenges
Abdulaziz Yahya Albawardi (*Adult Development*)

Teaching in the creative disciplines: Students as problem solvers, artists, and design thinkers - Kate Schmidt (*Colleges and Universities*)

The Effects of COVID-19 On Single Mothers Pursuing a Postsecondary Education Program - Jewell Pradier (*Women's Issues*)

The relationship of higher education and law enforcement performance
Christian Austin Nanry (*Professional Development & Continuing Education*)

The Self-Directed Learning Template
Stephen P. Preacher (*Professional Development and Continuing Education*)

What is the role of HRD professionals in the VUCA context?
Sumi Lee (*Human Resources and Workforce Development*)

8:00 am – 8:45 am

AL Editors Meeting

Jasmine

8:30 am – 8:45 am

Designing active learning course for adult immigrants with limited education

Fengling Liu, Wenjia Dong, Yankun He
Adult Basic Education and Literacy Education

Azalea I

Impact of dual enrollment programs on community college student completion

Susan J Barcinas, Yaxin Zheng, Heidi McCann
Community, Vocational, and Technical Colleges

Azalea III

Methodological reflections on studying informal and incidental learning in volunteering contexts

Beixi Li
Community, Minority, Non-Formal/Informal Education, and Cooperative Extension

Camellia I

Setting the tone about HRD in Southeast Asia: A discourse analysis of ASEAN Secretary-General Speeches

Oliver S. Crocco
Human Resources and Workforce Development

Camellia II

Forward march: Strategies for preparing veterans for the civilian workforce

Sharon Gardiner-Taylor, Yvonne Hunter-Johnson
Military Education

Magnolia D

Building community: Outreach activities to retain female students in male dominant academic majors

Jennifer Warrner
Women's Issues

Magnolia E

The Impact of amotivation on school satisfaction: A study of graduate students

Hyeon Jean Yoo, Leslie Cordie
Graduate Student Education

Magnolia F

9:00 am – 9:25 am

Editing an academic book: Narrative reflections and practical implications

Maja Stojanović, Petra A. Robinson
Professional Development and Continuing Education

Azalea I

Prior Learning Assessment: It's not easy but it's transformational for adult learners

Matt Bergman
Colleges and Universities

Azalea II

Impact of COVID-19 on learners in clinical placements: Investigating psychosocial and educational outcomes

Wendy M Green, Kelly Liao, Jisu Kim
Health Professionals

Azalea III

AAACE: The transition years OR how did we get here?

Wayne B. James, Douglas Smith
History and Philosophy of Adult Education

Magnolia D

Internationalizing online learning experiences: Lessons learned and best practices

Sohyeon Bae, Kyle Chong, John Dirckx, Insung Jung, Craig Shealy, Lee Sternberger
Technology and Online Learning

Magnolia E

Moving the Needle Forward: Implications of revamping a writing project institute to a web-based offering

Sassy C. Wheeler, Margaret-Mary Sulentic Dowell
Colleges and Universities

Magnolia F

9:00 am – 9:45 am

How to Write for AEQ, AL, JTED

Jasmine

9:30 am - 9:45 am

Highlighting the impact of health literacy on health disparities during the COVID-19 pandemic

Paula Barbel
Health Professionals

Azalea I

An Overview and Identification of Successful GED Recruitment Practices

Michael T. Miller, Val Hunt, Lona J. Robertson, Callie S. Embry, David M. Deggs
Human Resources and Workforce Development

Azalea II

The impact of ESL students' learning styles on their perceptions of asynchronous peer assessment

Hany Zaky
International Adult Education

Azalea III

A literature review of workplace diversity research on Asian Americans and HRD implications

Beixi Li
Human Resources and Workforce Development
Camellia I

Relationship of institutional support to online graduate learning

Kerry M. Elliott
Technology and Online Learning
Camellia II

Implementation of transformative learning program in practice

Keila Escobedo, Bo Chang
Access and Equity in Adult Education
Magnolia D

Mindfulness and Meditation: Applications in the workplace

Kristen Massey, Jerri O'Rourke
Human Resources and Workforce Development
Concurrent Session (15 minutes)
Magnolia E

Where am I in your social justice circle? International life experience in U.S. graduate cycle

Sedighe Zamani Roodsari
International Adult Education
Concurrent Session (15 minutes)
Magnolia F

9:45 am - 10:15 am

Networking Break with Exhibitors

Magnolia Foyer

10:15 am - 10:40 am

One key to moving the needle: The art of empathy

Charlotte Chase
Adult Psychology and Counseling
Concurrent Session (25 minutes)
Azalea I

One program, multiple identities, moving the needle

Daryl Privott, Fajuan Tan, Lee Nabb
Graduate Student Education
Concurrent Session (25 minutes)
Azalea III

Bridging the digital divide; Developing digital literacy skills for guardians of school aged children

Jessica Quintero, Cindy Peña
Community, Minority, Non-Formal/Informal Education, and Cooperative Extension
Concurrent Session (25 minutes)
Camellia I

Female entrepreneurs: Stories and experiences as leaders, learners, perceivers, and perceived

Peg Richmond, Joellen Coryell
Women's Issues
Concurrent Session (25 minutes)
Camellia II

10:15 am - 11:00 am

AEQ Editors Meeting

Jasmine

10:45 am - 11:00 am

Elements of effective pedagogy for marginalized populations

Julie Harstin, Wendy Griswold
Access and Equity in Adult Education
Concurrent Session (15 minutes)
Azalea I

Engaging the community: Offering webinars to promote health, wellness and communication.

Bonnie Flynn
Health Professionals
Concurrent Session (15 minutes)
Azalea II



**STUDENTS ARE LOOKING FOR
HR CERTIFICATION PREP COURSES
LET US SEND THEM YOUR WAY!**

***TURNKEY PROGRAM AVAILABLE**



801-343-3699 | www.hrcp.com | info@hrcp.com

Veterans Pursuing Higher Education During the COVID-19 Pandemic: An added transitional challenge

Yvonne Hunter-Johnson

CPAE: Emerging Issues for Faculty in Higher Education

Concurrent Session (15 minutes)

Camellia I

Adult education program planning: A non-Western perspective

Xiaoying Jiang

International Adult Education

Concurrent Session (15 minutes)

Camellia II

Fundamentals of digital literacy for adults: An integrative literature review

Junghwan Kim, Bora Jin, Miranda Livingston, Jihee

Adult Basic Education and Literacy Education

Concurrent Session (15 minutes)

Magnolia E

Perspectives on Instructional Delivery Changes Post-Pandemic for Adult Learners in Community Colleges

Jim Maddox, Michael T. Miller

Colleges and Universities

Concurrent Session (15 minutes)

Magnolia F

11:05 am - 11:30 am

A college-wide needs analysis: Preliminary findings and actions steps

Petra A. Robinson, Roland Mitchell, Maja Stojanović

Professional Development and Continuing Education

Concurrent Session (25 minutes)

Azalea I

Adult education policy: Individualization of social risk

Elizabeth Roumell

Access and Equity in Adult Education

Concurrent Session (25 minutes)

Azalea III

Rural roots: Creating a vision for serving adult learners in rural communities

Susan Elkins, Steven B. Frye

Colleges and Universities

Concurrent Session (25 minutes)

Magnolia E

ROUNDTABLES (Three)

Jasmine

(One of Three) Have you heard of Indian Residential Boarding Schools?

Jillian Paciello

Access and Equity in Adult Education

(Two of Two) How does limited representation in tenured faculty positions impact African American adult educators and learners?

Esther Pippins, Rachael Weldon-Caron

Research to Practice

11:35 am – 12:00 pm

Undergraduate Student Education: Using videogames in the Classroom

Zachary Z. Robinson

Undergraduate Student Education

Concurrent Session (25 minutes)

Azalea I

Learning cities for democracy, educationality, and social justice

Leodis Scott

CPAE: Research & Theory

Azalea III

Adult Learners – online programs: Choosing best matches

Keith Smith

Technology and Online Learning

Concurrent Session (25 minutes)

Camellia I

Transformative learning and conceptual change theory: Distinct but complimentary

Jonathan Taylor, Steven B. Frye, Elizabeth Sondermeyer

Colleges and Universities

Concurrent Session (25 minutes)

Camellia II

Coping with the covid climate: Using online expressive and inquiry writing to build student resilience

Jeffrey Russell

Concurrent Session (25 minutes)

Colleges and Universities

Magnolia F

ROUNDTABLE (Three)

Jasmine

(One of Three) Community-engaged scholarship: A positive and meaningful research framework

Christy Rhodes

Community, Minority, Non-Formal/Informal Education, and Cooperative Extension

(Two of Three) Social movements, community education, and the fight for racial justice: Black women and social transformation

Elizabeth Roumell, ArCasia James-Gallaway

Community, Minority, Non-Formal/Informal Education, and Cooperative Extension

(Three of Three) **Being there for online adult learners during a pandemic**

Corina Todoran
Technology and Online Learning

12:15 pm - 2:00 pm

AAACE Awards Luncheon

Magnolia ABC

2:15 pm - 2:40 pm

The cybersecurity mindset as a critical literacy

Jenny Daugherty
Technology and Online Learning
Concurrent Session (25 minutes)
Azalea I

Digital tools are not scary!

Tricia Berry
Technology and Online Learning
Concurrent Session (25 minutes)
Azalea II

Adult education in a time of change: Quantum thinking for lifelong learning and learning society

Qi Sun
Research to Practice
Concurrent Session (25 minutes)
Camellia I

Grounded and visionary: Advancing the profound leadership concept

Rusty Vineyard, Heidi K. Scott, Davin Carr-Chellman, Laura Holyoke
Human Resources and Workforce Development
Concurrent Session (25 minutes)
Camellia II

The role of emotional intelligence in police reform

Clarence J.C. Stewart, IV, Sheena Copus Stewart
Research to Practice
Magnolia F

ROUNDTABLES (Three)

Jasmine

(One of Three) **Maximize the Impact of Concurrent Teaching with Students In-Person and Online**

Jane Teel, Leslie Cordie
Colleges and Universities

(Two of Three) **Self, Society, and Social Justice: Implementing Connected Framework of Philosophical Foundations in Adult Continuing Education**

Leodis Scott
History and Philosophy of Adult Education

(Three of Three) **Understanding the Lost Learner to Improve: Learning Resistance Amongst Parolees and Mandatory Release Offenders**

Jameel E. Rucker
CPAE: Research & Theory

2:15 pm - 4:40 pm

CPAE Workshop

Grand Lawn

2:45 pm - 3:00 pm

A mixed-methods study of first-generation college students' experiences at a minority-serving institution during COVID-19

Tomika Greer, Olivia Johnson, Holly M. Hutchins, Barbara L. Stewart
Colleges and Universities
Azalea I

Social Justice through methodological praxis: How critical and collaborative ethnographic research can address inequality

Eric Hunting
Community, Minority, Non-Formal/Informal Education, and Cooperative Extension
Azalea II

THE BENEFITS OF TEAMING UP WITH THE BEST IN REAL ESTATE EDUCATION

Partnering with The CE Shop provides many different advantages and opportunities. Our award-winning online education and incentivized partner program has helped hundreds of thousands of students achieve their goals and long-term success. **Here's how you'll benefit:**

-  Access to an Award-Winning Education
-  100% Online and Mobile-Friendly Real Estate Education
-  A Dedicated Account Manager & Course Advisors

TheCEShop.com/Affiliate-Programs-Partners

The CE Shop
INNOVATING CAREER EDUCATION

The identification of truth in adult learning
Michael Kroth, Neal Ricks, Davin Jules Carr-Chellman
Research to Practice
Camellia I

Museum education and curriculum development: A literature review for a multiple case study analysis
Ruth Lockard
Access and Equity in Adult Education
Camellia II

Wimpy or Wonderful? Effectiveness of Online Discussion in Graduate Courses
Jane Teel
Colleges and Universities
Magnolia F

3:05 pm – 3:30 pm

Building on Resilience Models and Frameworks of Black Male Success Across the P-20 Pipeline
Fred A. Bonner II, Stella Smith
Access and Equity in Adult Education
Azalea I

The role of evolving expert knowledge and performance in paramedic EMS ethical decision making
Susan Barcinas, Susan Smith Braithwaite
Research to Practice
Camellia I

Dispositional Leadership Development in Adult Education
Leslie Blanchard, Omaira Hajjami, Deana Meredith, Damon Ploger
Human Resources and Workforce Development
Camellia II

Cognizance Leadership: Executive and Organizational Coaching for Emotionally Intelligent Leaders Managing Complex Challenges
Cynthia Russell, Leodis Scott
Professional Development and Continuing Education
Magnolia F
Roundtables (three)
Jasmine

(One of Three) Inherently Incomprehensive: Issues with Implementation and Efficacy of Digital Learning Records Outside Academia
Billie McNamara
Human Resources and Workforce Development

(Two of Three) Supporting those who are system impacted: A conversation of community partnerships
Sheena Stewart, Jeanna Lee, Clarence J.C. Stewart, IV
Community, Minority, Non-Formal/Informal Education, and Cooperative Extension

(Three of Three) Anti-Racism work group practices for university changes
Crystal Loose, Michael Ryan
Colleges and Universities

3:35 pm – 3:50 pm

Troubling the accepted history of the training and development field.
Ajit Prasad Bhattarai, Karen Watkins
Human Resources and Workforce Development
Azalea I

Race, racism, and white supremacy in the film mudbound
Nia Nicks, Conial Caldwell, Chelsey Wooten, Tamecia M. Curry, Richard Wiley, Emily George
Access and Equity in Adult Education
Azalea II

Exploring K-12 teachers' experience of learning transfer during the COVID-19 pandemic
Yuanlu Niu, Yvonne Hunter-Johnson, Xu Xu, Yi-Jung Lee
Human Resources and Workforce Development
Azalea III

Equity and socioeconomic status in the fine art classroom

Leslie Parker
Access and Equity in Adult Education
Camellia I

ROUNDTABLES (three)

(One of Three) **Digital solutions for adult learners with limited resources**

JaRon Burnett
Access and Equity in Adult Education

(Two of Three) **Teaching during COVID-19: Inequities, best practices, and takeaways**

Lisa Baumgartner
Technology and Online Learning

(Three of Three) **Microcredentials: Stackable, achievable, skills-driven**

Keith L. Smith
Technology and Online Learning

3:55 pm – 4:10 pm

Identity Literacy in Educational Spaces

Kala Burrell-Craft
Professional Development and Continuing Education
Azalea I

How do HRD practitioners in adult education tackle issues related to digital ethics within organizations?

Humberto de Faria Santos, Cindy Peña, Rey Lopez
Human Resources and Workforce Development
Azalea II

The ball is in your court: Empowering the learner-athlete throughout long term rehabilitation.

Anna Peterson
Health Professionals
Azalea II

Zen & the art of digital education

David San Filippo
Technology and Online Learning
Camellia I

4:15 pm – 4:40 pm

Square pegs and round holes: Alternative approaches to college student development theory

Fred A. Bonner II, Stella Smith
Access and Equity in Adult Education
Azalea I

Virtual transformations: Tales of teacher educators during a pandemic

Crystal Marcella Voegelé, Tammy R. Benson
Colleges and Universities
Camellia I

Lessons learned: Pathways for reentry and transition from prison to the community

Donald J. Tracy
Adult Basic Education and Literacy Education
Camellia II

Certification & credentialing of adult basic educators: State policy landscape review

April Taylor
Adult Basic Education and Literacy Education
Magnolia F

5:00 pm - 6:00 pm

***CPAE Research to Practice Networking Session**

Magnolia Veranda

6:00 pm - 8:00 pm

***CPAE Business Meeting**

On your own. CPAE attendees should have received an email with the relevant information.

8:00 pm - 9:30 pm

***Graduate Student Networking Event**

(Reservations and tickets required) (Board Members and Past Presidents Invited)
Azalea 1 and Azalea Foyer

Friday, October 8

7:00 am - 8:00 am

Continental Breakfast

Magnolia Foyer

8:00 am - 11:00 am

Registration Desk Open

Magnolia Foyer



AAACE Bronze Sponsor

College of Community Innovation and Education

UNIVERSITY OF CENTRAL FLORIDA

8:00 am – 8:25 am

**Therapy Dogs to assist with developing Equity:
Utilizing Animal Assisted Education and Animal
Assisted Therapy**

Stacey Sinwald, Rachel Wlodarsky,
Access and Equity in Adult Education
Azalea I

**Through the eyes of experts: An investigation into
living a profound life**

Katie Kimmel Wilson, Laura Holyoke, Ali Threet, Laila
Cornwall
Adult Development
Azalea III

**Reclaiming the Black love for agriculture through
Prairie View A&M NextGEN and Small Farm Institute.**

Stedman H. Douglas, Donald Stoddart
Community, Minority, Non-Formal/Informal Education,
and Cooperative Extension
Camellia II

**Arts-based and arts-informed research: Descriptions,
distinctions, and designs for research in equitable
adult education**

Melissa Kay Hort
Research to Practice
Magnolia E

**An evolved grounded theory study of North Carolina
paramedics continuing professional education**

Kory Lane, Susan J. Barcinas
Health Professionals
Magnolia F

ROUNDTABLE (one)

Jasmine

**(One of One) Overcoming Degree Completion Barriers
to Military/Non-Traditional Students: Review of Prior
Learning Assessment and Proctored**

Lisa Young, Nichelle McMullen, Shanikia N. Young
Technology and Online Learning

8:30 am – 8:55 am

**Developing culturally responsive interventions during
a pandemic**

Carrie Bailey, Lynn Beeler, Robin Hicks
Access and Equity in Adult Education
Azalea I

**The mind's design: The power of positive academic
leadership**

Ellen Beattie
Research to Practice
Azalea II

Accelerate and graduate: Modern states & CLEP

Gini Beran
Colleges and Universities
Azalea III

Community education in the time of COVID 19

Donald Tracy
Community, Minority, Non-Formal/Informal Education,
and Cooperative Extension
Jasmine

**The importance of teaching adults how to vet online
information for a functioning democracy**

Lee W. Nabb, Fujuan Tan
Adult Development
Magnolia E

**Equitable learning spaces: Fostering inclusivity in
learning when deploying instructional technologies**

Amanda Elizabeth Major, Rohan Jowallah
Colleges and Universities
Magnolia F

9:00 am - 9:25 am

**Lead me, guide me: Fostering motivation to lead in
organizations**

Kelli Bates, Kadaja Cryer
Human Resources and Workforce Development
Concurrent Session (25 minutes)
Azalea I

Stepping back and forging ahead: Considering conceptual frameworks in working toward program development.

Steven Frye, Jonathan Jonathan Taylor
Colleges and Universities
Concurrent Session (25 minutes)
Camellia I

Cross-racial-autoethnography of professors of color examining diversity in academia: The myth of the progressive landscape

Mitsunori Misawa, Juanita Johnson-Bailey
Colleges and Universities
Concurrent Session (25 minutes)
Magnolia F

ROUNDTABLES (one)

Jasmine

(One of One) Are lessons learned the hard way really the best ones?

Tricia Berry
Technology and Online Learning

9:30 am - 9:45 am

Servant Leadership during the Covid-19 Pandemic

Ahmed Al-Asfour, Aynur Aynur Charkasova
Access and Equity in Adult Education
Concurrent Session (15 minutes)
Azalea I

Reimagining English Language Arts Methods: Flexible Teaching Models and Differentiated Roles in Field Experience

Danielle Chilcote
Undergraduate Student Education
Concurrent Session (15 minutes)
Azalea III

Men need trust and women need connection: Troubling heteronormativity in the language classroom

James Coda
Colleges and Universities
Concurrent Session (15 minutes)
Camellia I

Promoting transfer of training for veteran employees: The role of human resource development professionals

Yvonne Hunter-Johnson
Human Resources and Workforce Development
Concurrent Session (15 minutes)
Camellia II

Looking inward to look outward: Understanding burnout experienced by K-12 Educators in the US

Catherine Meeth
Professional Development and Continuing Education
Concurrent Session (15 minutes)
Magnolia D

A quantitative inquiry into the relationship between mattering and academic success of military service members

Tingting Liu, Hio Loi
Human Resources and Workforce Development
Concurrent Session (15 minutes)
Magnolia E

9:45 am - 10:15 am

Morning Break

Magnolia Foyer

10:15 am - 10:40 am

Wāhkōhtowin, Otipemisiwak, and Ekichinantak (WOE): Beyond humanistic philosophy in adult education

Sharon Jarvis
History and Philosophy of Adult Education
Camellia I



**Adult and Lifelong Learning
Licensure, Master's and Doctorate**



UNIVERSITY OF
ARKANSAS

ONLINE

Screen to screen: Facilitating an online community engagement program for intercultural and intergenerational learning

Jacob Kelley, Adeola Fayemi
Community, Minority, Non-Formal/Informal Education,
and Cooperative Extension
Concurrent Session (25 minutes)
Camellia II

ROUNDTABLE (one)
Jasmine

(One of One) Discussing profound disability and profound ability

Davin Jules Carr-Chellman, Michael Kroth
Access and Equity in Adult Education

10:45 am - 11:25 am

Respondent's Session
Tricia Berry
Magnolia ABC

11:30 am - 1:00 pm

Business Meeting and Installation of Officers / Luncheon
Thomas Cox
Magnolia ABC

Agenda for Business Meeting

Welcome & Call to Order

Greetings and Welcome
Thomas Cox

Approval of the 2020 Business Meeting Minutes -
Thomas Cox

Treasurer's Report
Charlotte Chase

State of the Association Address Thomas Cox
Recognition and Installation of Officers and Directors

Recognition of Outgoing Officers and Directors
Mary Alfred – Immediate Past President
Matias Ramirez – Commission Director
Paulette Isaac-Savage - Secretary/Parliamentarian

Recognition of Returning Officers
Charlotte Chase - Treasurer
Tricia Berry – CDLT
Susan Yelich Biniecki – CPAE
Carmela Ochoa – CABEL
Wendy Griswold -CIAE
Doris Flowers – CCMNFE
Maja Stojanović – CGS

Welcome of Incoming Officers
Vanessa Sheared – President
Paulette Isaac-Savage – President-Elect
Michelle Glowacki-Dudka – Secretary/Parliamentarian
Yvonne Hunter-Johnson - CWPD

Installation of New Officers, Transfer of the Presidency, Passing of the Gavel - John Henschke

Presidential Address – Association Plans for 2022
Vanessa Sheared

Invitation to 2022 Annual Conference
Kenda Grover

Adjournment - Vanessa Sheared

New Titles for Adult and Continuing Education

THE HANDBOOK OF ADULT AND CONTINUING EDUCATION
2020 EDITION
EDITED BY
Tonietto S. Rocco
M. Cecil Smith
Robert C. Mizzi
Lisa R. Merriweather
Joshua D. Hawley

MOTIVATIONAL IMMEDIACY
FOSTERING ENGAGEMENT IN ADULT LEARNERS
Jonathan E. Taylor
Foreword by Ralph G. Brockett

AAACE 2021 participants receive 30% OFF at our Virtual Bookstore. Use the QR code to access the Bookstore or use code AAACE1 when ordering.

1996-2021 25th ANNIVERSARY
Stylus PUBLISHING, LLC.
Connect with Stylus Online!
f i n t y @StylusPub

TO ORDER: CALL 1-800-232-0223 FAX 703-661-1501 E-MAIL StylusMail@PressWarehouse.com WEBSITE www.Styluspub.com



AHEA is excited to partner with AAACE to promote our mission of serving institutions and individuals who advocate for, support, and advance adults in programs of higher education.

AHEA Book Series—Find Us at the Exhibitor’s Area

Since 2012, AHEA has sponsored a book series to highlight the important and life-changing work undertaken by adult educators in a variety of settings. This year, we are excited to announce the release of two new books in this series. Purchase your copies at the AHEA table in the Exhibitor’s area.

Advancing the Global Agenda for Human Rights, Vulnerable Populations, and Environmental Sustainability: Adult Education as Strategic Partner (Alfred, Roumell, & Robinson, Eds.)

is an accessible introduction to issues of adult education and sustainability grounded in literature, theory, and practice. The editors have carefully curated international voices and global perspectives. Consider it as a resource for a “Global Issues in Adult Education” course.

Critical Approaches to Trauma in Adult Learning (Douglass, Threlkeld, & Merriweather, Eds.)

invites readers to think deeply about the experiences of trauma they witness in and outside of the classroom. If 2020 and the COVID-19 pandemic have shown us anything, it is that trauma is inevitable, and trauma alters adult learners' experiences. This collection includes a discussion of implications and practices for adult and higher education administrators and faculty who desire to create an environment that fosters learning and change for includes individuals who have experienced trauma.

AHEA Annual Conference—Early March 2022

Make plans now to join the Adult and Higher Education Alliance for our annual conference. This year, we’re hoping to meet together on the campus of the University of Central Florida, but we are planning virtual options as well. We pride ourselves on being *a supportive, graduate student-friendly conference*, held in a setting that encourages collaboration and professional development. This year’s conference will explore the themes related to global adult education and trauma-informed learning.

Find more information on the conference—including the forthcoming call for proposals—at www.ahea.org



www.ahea.org

Things to do at Sandestin

SANDESTIN RESORT FITNESS CENTER: The Sandestin Fitness Center is located above Sandestin's Linkside Conference Center. Specialized services and equipment supported by certified instructors promote total body enhancement in a safe, effective and comfortable training environment. Call 850.267.6464 for more information. Sandestin Golf and Beach Resort guests simply present their Resort Key Card for free access to the Sandestin Fitness Center. Guests must be 18 years old to enter alone; guests ages 16 thru 17 must be escorted by a parent; guests under 16 are not permitted.

SANDESTIN SALON: The spa and salon are located above the Linkside Conference Center on the bay side of the resort. Services are available Monday thru Saturday from 9:00 AM to 6:00 PM and closed on Sunday. Call 850.267.6466 for more information.

GOLF: Sandestin's golf resort features four award-winning Destin golf courses: Baytowne Golf Club, Burnt Pine Golf Club, Raven Golf Club and The Links Course. For advance tee times call 850.267.8211.

WATER SPORTS: If it's fun and it floats, you'll most likely find it at the Baytowne Marina. Choose from WaveRunners, snorkel and scuba gear, kayaks, boogie boards and pontoon boats. For more information call 850.267.7777.

THE VILLAGE OF BAYTOWNE WHARF: The Village of Baytowne Wharf is the gathering place for everyone visiting Sandestin. Discover and explore the many charming shops, exciting night life, and dine at a different restaurant or eatery every day.

TRANSPORTATION / PARKING: Sandestin offers complimentary on-property transportation throughout the resort, featuring (3) color-coded routes with stops conveniently located at points of interest and in many of the neighborhoods. Tram stops and current hours of operation for this service can be viewed on the Sandestin resort maps issued at check-in or by visiting the Sandestin App. Trams are available to resort guests by showing a valid Sandestin® amenity card (room key).



TEXAS A&M UNIVERSITY

Adult Education

Adult Education (AE) develops practitioners and scholars who are critically reflective, learner-centered, and committed to social justice.

Our programs prepare individuals to administer programs and teach adults in various community and organizational settings, including community/literacy centers, colleges/universities, health care facilities, and the workplace, and research significant AE topics.

Fully Online

AE Certificate

tx.ag/AdEdCert

AE Master's

tx.ag/AdEdMasters

On-Campus

AE Ph.D.

tx.ag/AdEdPhd

Thank you to our sponsors

Titanium Sponsor



Platinum Sponsor



Gold Sponsor



www.aceconference.net

May 19 & 20, 2022



Silver Sponsor



Bronze Sponsor



SAVE THE DATE!



*Annual
Conference*

OCTOBER 11 - 14, 2022

Hyatt Regency Milwaukee
Milwaukee, Wisconsin