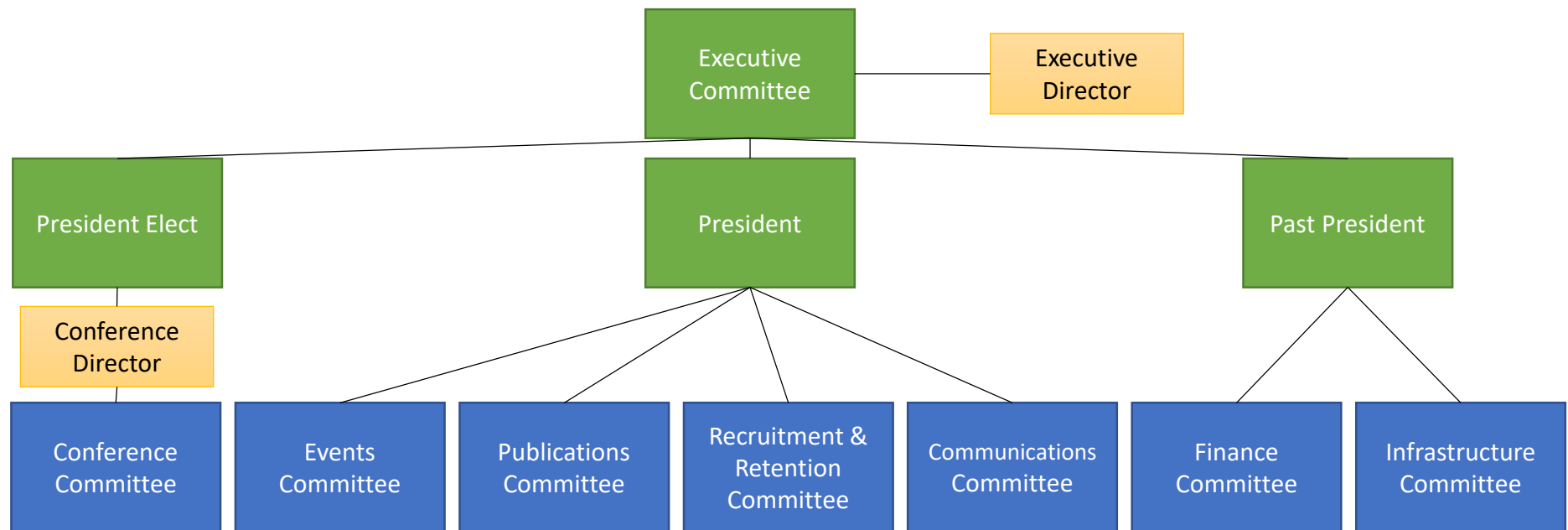


Association for the Assessment of Learning in Higher Education Committee Structure



Conference Committee: coordinate the annual conference, including the following: determine format, solicit and review proposals, publicize and communicate, evaluate and use results; subcommittees include proposals & sessions, networking, and future planning/locations.

Events Committee: coordinate and develop events for professional development and the advancement of knowledge via webinars, twitter chats, workshops/institutes, topical interest groups, etc.; recommend speakers and topics; advertise; implement; evaluate and use results [NOTE: does not include the annual conference].

Finance Committee: not accepting new members. Review financial data and prepare a budget; make financial policy recommendations.

Infrastructure Committee: coordinate and develop website content and marketing materials; proofread/edit website and marketing materials; coordinate the nominations subcommittee.

Publications Committee: coordinate and develop publications on student learning assessment for professional development and the advancement of knowledge; recommend authors and topics; advertise; proofread/edit. Current publications include the *Intersections*, *Emerging Dialogues*, and Conference Proceedings.

Recruitment and Retention Committee: analyze membership data; recruit & retain members; annually survey members; make recommendations of the conditions under which membership is established and renewed; manage the placement of member volunteers.

Communications Committee: coordinate, develop, and disseminate information via Twitter, Facebook, LinkedIn, Instagram, etc., to promote events and professional development opportunities.