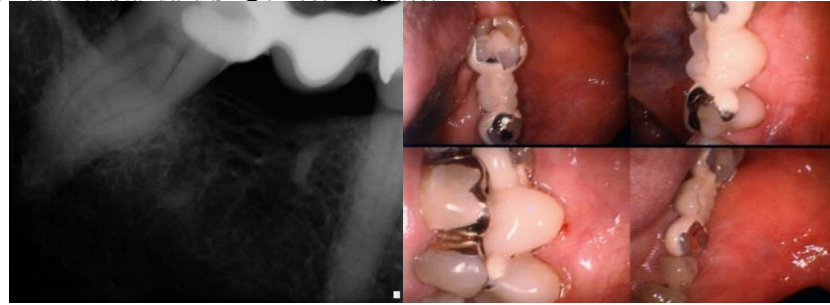


# Case Study 5

T. Bob Davis, DMD

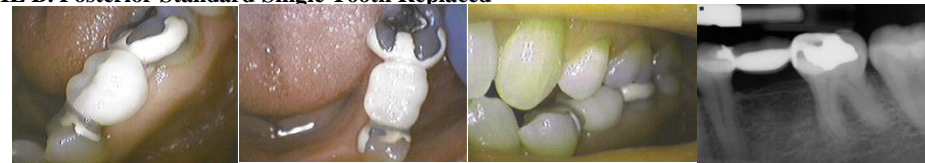
## CASE REPORT – INSTALLMENT #5

### MARIE C. Posterior Standard Single Tooth Replaced



This posterior MB was placed on tooth #29 and #31, replacing #30. Seated with Comspan resin cement on December 22, 1988, it has been in service over 27 years. After 23 years the patient chose to replace #13 and #15 with Maryland Bridges (each attached to #14, 12-14, 14-16). Note the excellent bone health and gum relationships. The retained root tip has been stable longer than the bridge. Note only a small area has had porcelain wear off. Still esthetic and normal functioning after a quarter century. Patient is currently 84 years old! What a great service and record of quality dental care!

### DEBBIE B. Posterior Standard Single Tooth Replaced



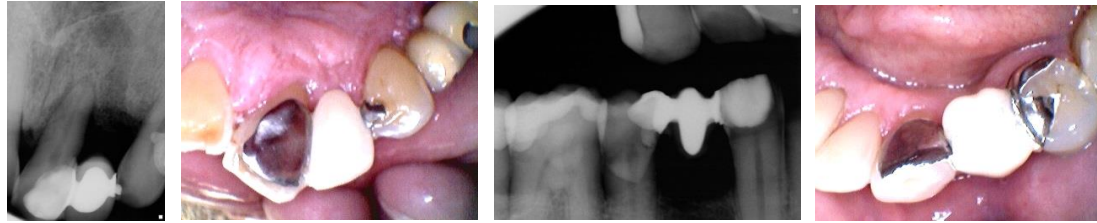
This MB 19x21 replacing tooth #20 was placed in 1988. This patient needs ortho and sleep apnea treatment and at age 55 she started with a TAP 3 appliance. Comspan bonding. Note porcelain has not been chipped for more than 27 years. Notice the excellent bone health all these years! The porcelain can be long lasting as demonstrated here. Sleep apnea and mouthguard appliances can work harmoniously with Maryland Bridges! Just block out the wings and pontics well before impressing for those appliances. Note the long lasting amalgam on #19. It can (when needed) be replaced without affecting the Maryland Bridge! The patient lives in a neighboring state over 10 hours drive from our office. Maintenance has been sporadic but even then the bridge looks as good as new!

### SHARON P.



Lower left photo, note large wrap of bicuspid for stability, also large occlusal rest on molar for security. Now in their 18<sup>th</sup> year of service, this lower #29-32 (left photo) has been remade once while the lower #17-22 has been rebonded twice due to severe bruxism and failure to accept and wear a nightguard! Now in service for 20 years, two Maryland Bridges have prevented her from excess destruction to traditional bridges and excessive costs from implants. A very sickly patient, implant success would be very questionable.

**Al S.**



MB #20X22 replacing #21 was seated with Comspan 4/23/1990. Over the years it never loosened and remains esthetic due to design. In the same patient MB #6X8 was placed the same date with Comspan. 7 years later it was remade due to #8 having mobility of +1.5 and bonded with Enforce. Rebonded a year later due to trauma, and then remained for over 10 years. #6 lingual wing was removed and cantilever effect holding onto #8 has extended the life for over 6 years. Note the traumatic damage to #9 unrepaired. No dental work lasts forever when traumatic function or injury remains.

**Glen G.**



Patient had an empty space where #30 was for many years. Placed a Maryland Bridge there with a pontic #30 with wing attachments on #29 and 31. Patient also has anterior MB. Refer to Installment #9 for anterior MB. Esthetics are superb!