

# CCY ARCHITECTS

## COTTLE CARR YAW

### WORK + CULTURE

Course Number #1909121.L

Provider Number #A112

John Cottle, FAIA  
September 20, 2019



[www.ccyarchitects.com](http://www.ccyarchitects.com)

970.927.4925 studio

Credit(s) earned on completion of this course will be reported to **AIA CES** for AIA members.

Certificates of Completion for both AIA members and non-AIA members are available upon request.

This course is registered with **AIA CES** for continuing professional education. As such, it does not include content that may be deemed or construed to be an approval or endorsement by the AIA of any material of construction or any method or manner of handling, using, distributing, or dealing in any material or product.

---

Questions related to specific materials, methods, and services will be addressed at the conclusion of this presentation.



# Course Description

---

Sharing recent and ongoing projects which explore connecting to natural and community-based sites. The presentation will include initial ideas as well as completed work.

# Learning Objectives

---

At the end of the this course, participants will be able to:

1. **Demonstrate** alternative responses to site analysis. **The intent is to lessen the environment impact of human activity, while using natural characteristics of the site to enhance human comfort and health and maintaining the ecological integrity of the site.**
2. **Discover how** to translate site analysis into alternative forms and materials **while keeping a building site in harmony with its surroundings, which is vital to our environment and sense of community.**
3. **Illustrate** custom and Rhino generated residential facades.
4. **Analyze case studies and examples** of ethical practice of a **small rural community architecture firm** that promotes good design and the well-being of the public and their clients.



Registration Card

# International Design Conference in Aspen

## June 20-25 1971 Paradox

**Registration Fee:**

- 1. \$100.00 (includes registration, meals, and lodging)
- 2. \$50.00 (includes registration and meals)
- 3. \$25.00 (includes registration only)
- 4. \$10.00 (includes registration only)
- 5. \$5.00 (includes registration only)
- 6. \$2.50 (includes registration only)
- 7. \$1.25 (includes registration only)
- 8. \$0.62 (includes registration only)
- 9. \$0.31 (includes registration only)
- 10. \$0.15 (includes registration only)
- 11. \$0.07 (includes registration only)
- 12. \$0.03 (includes registration only)
- 13. \$0.01 (includes registration only)
- 14. \$0.00 (includes registration only)
- 15. \$0.00 (includes registration only)
- 16. \$0.00 (includes registration only)
- 17. \$0.00 (includes registration only)
- 18. \$0.00 (includes registration only)
- 19. \$0.00 (includes registration only)
- 20. \$0.00 (includes registration only)

**Registration Fee:**

- 1. \$100.00 (includes registration, meals, and lodging)
- 2. \$50.00 (includes registration and meals)
- 3. \$25.00 (includes registration only)
- 4. \$10.00 (includes registration only)
- 5. \$5.00 (includes registration only)
- 6. \$2.50 (includes registration only)
- 7. \$1.25 (includes registration only)
- 8. \$0.62 (includes registration only)
- 9. \$0.31 (includes registration only)
- 10. \$0.15 (includes registration only)
- 11. \$0.07 (includes registration only)
- 12. \$0.03 (includes registration only)
- 13. \$0.01 (includes registration only)
- 14. \$0.00 (includes registration only)
- 15. \$0.00 (includes registration only)
- 16. \$0.00 (includes registration only)
- 17. \$0.00 (includes registration only)
- 18. \$0.00 (includes registration only)
- 19. \$0.00 (includes registration only)
- 20. \$0.00 (includes registration only)

**Registration Fee:**

- 1. \$100.00 (includes registration, meals, and lodging)
- 2. \$50.00 (includes registration and meals)
- 3. \$25.00 (includes registration only)
- 4. \$10.00 (includes registration only)
- 5. \$5.00 (includes registration only)
- 6. \$2.50 (includes registration only)
- 7. \$1.25 (includes registration only)
- 8. \$0.62 (includes registration only)
- 9. \$0.31 (includes registration only)
- 10. \$0.15 (includes registration only)
- 11. \$0.07 (includes registration only)
- 12. \$0.03 (includes registration only)
- 13. \$0.01 (includes registration only)
- 14. \$0.00 (includes registration only)
- 15. \$0.00 (includes registration only)
- 16. \$0.00 (includes registration only)
- 17. \$0.00 (includes registration only)
- 18. \$0.00 (includes registration only)
- 19. \$0.00 (includes registration only)
- 20. \$0.00 (includes registration only)

*Jack Roberts*

**Registration Fee:**

- 1. \$100.00 (includes registration, meals, and lodging)
- 2. \$50.00 (includes registration and meals)
- 3. \$25.00 (includes registration only)
- 4. \$10.00 (includes registration only)
- 5. \$5.00 (includes registration only)
- 6. \$2.50 (includes registration only)
- 7. \$1.25 (includes registration only)
- 8. \$0.62 (includes registration only)
- 9. \$0.31 (includes registration only)
- 10. \$0.15 (includes registration only)
- 11. \$0.07 (includes registration only)
- 12. \$0.03 (includes registration only)
- 13. \$0.01 (includes registration only)
- 14. \$0.00 (includes registration only)
- 15. \$0.00 (includes registration only)
- 16. \$0.00 (includes registration only)
- 17. \$0.00 (includes registration only)
- 18. \$0.00 (includes registration only)
- 19. \$0.00 (includes registration only)
- 20. \$0.00 (includes registration only)





# ARCHITECTURAL RECORD

FEBRUARY 1979 **2** A MCGRAW-HILL PUBLICATION FIVE DOLLARS PER COPY























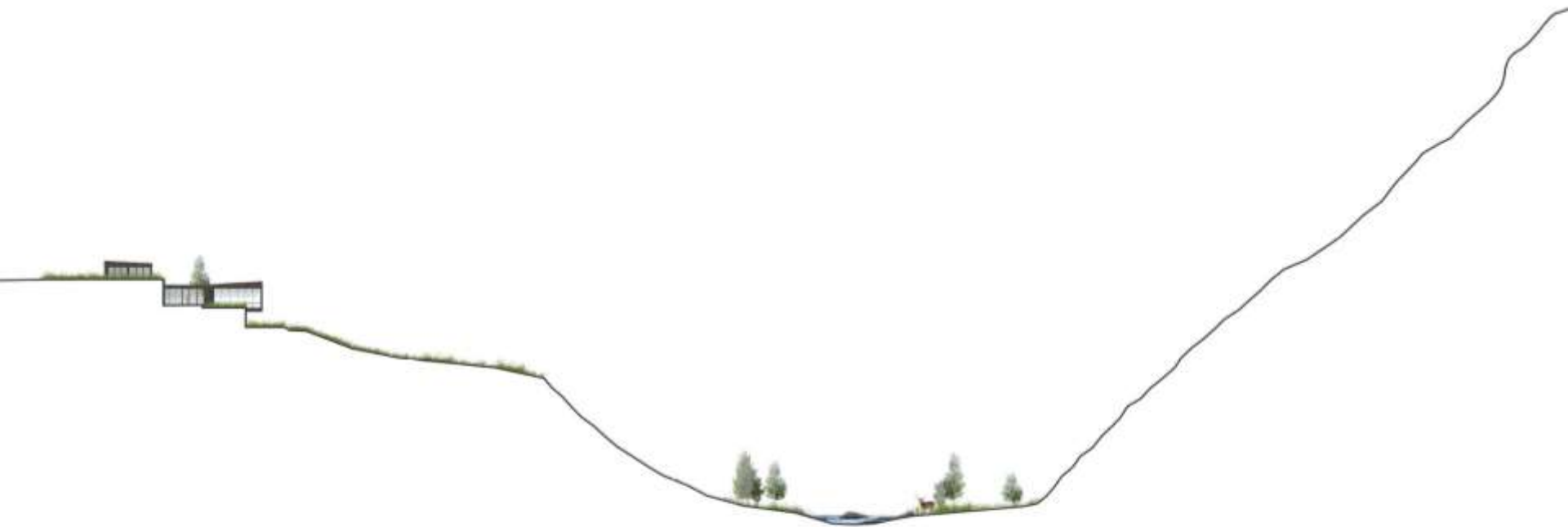
## RECENT

---

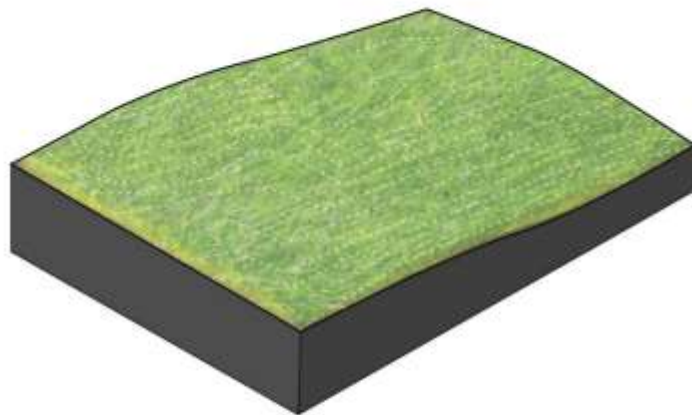


## MEADOW HOUSE

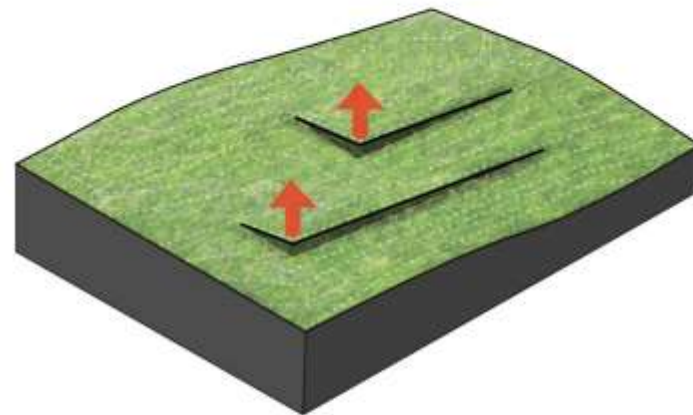
Project size: 14,000 SF | Site: 4.9 Acres



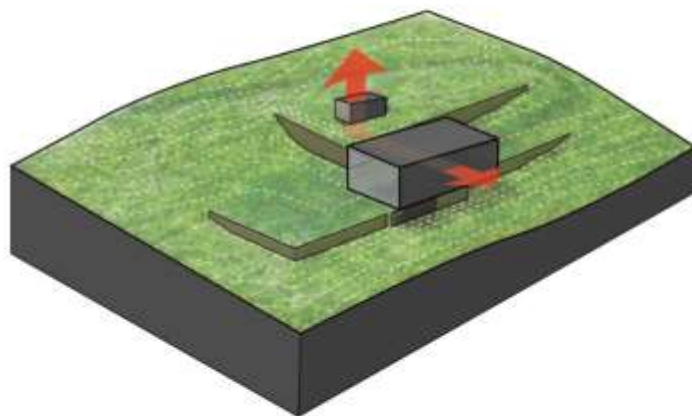




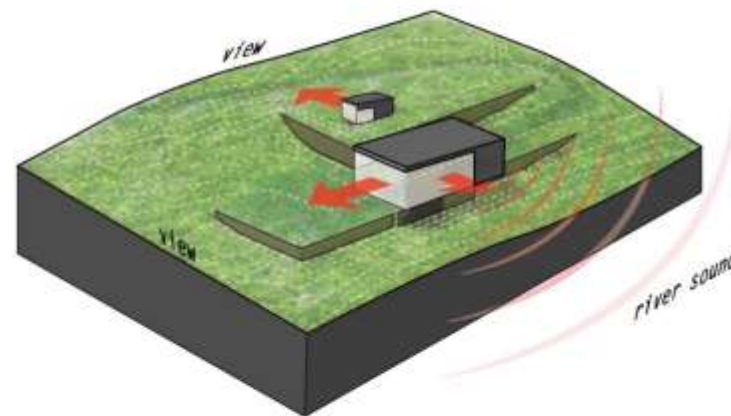
MEADOW



MEADOW lift

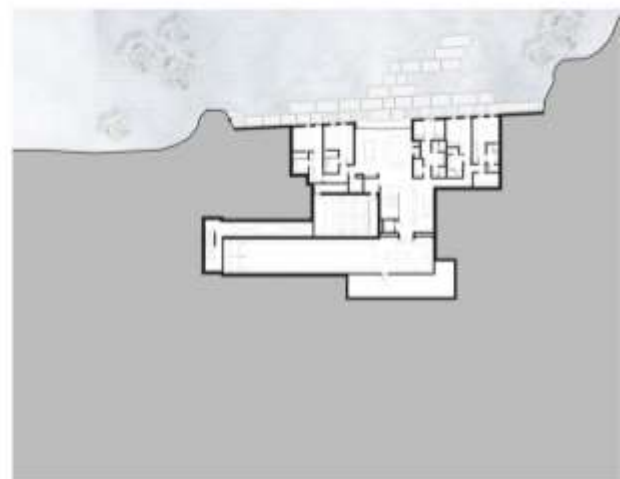
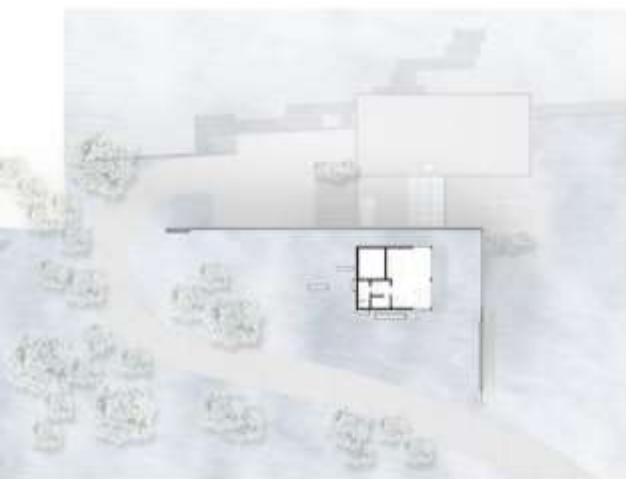


anchor HOUSE



engage senses HOUSE

































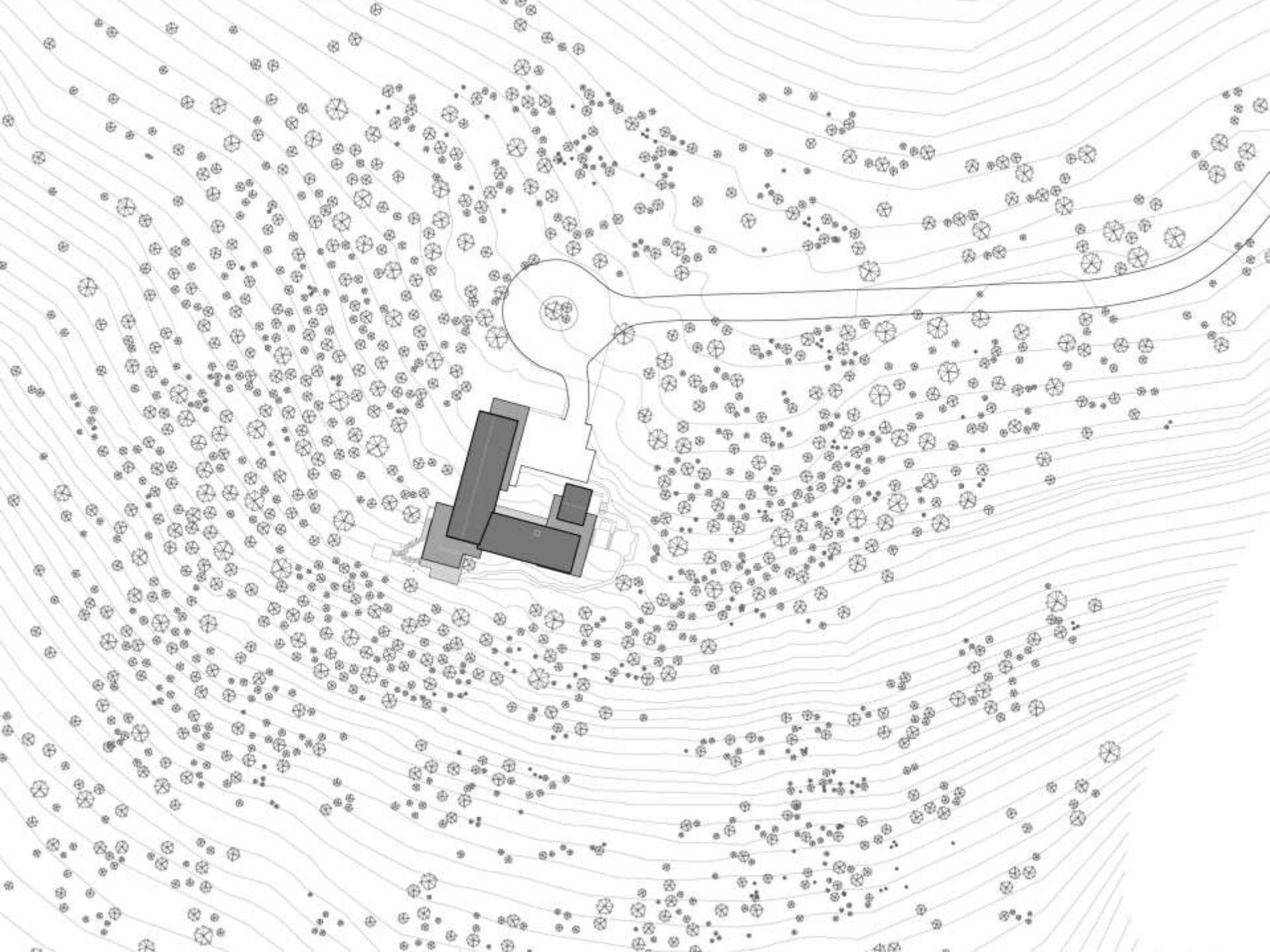




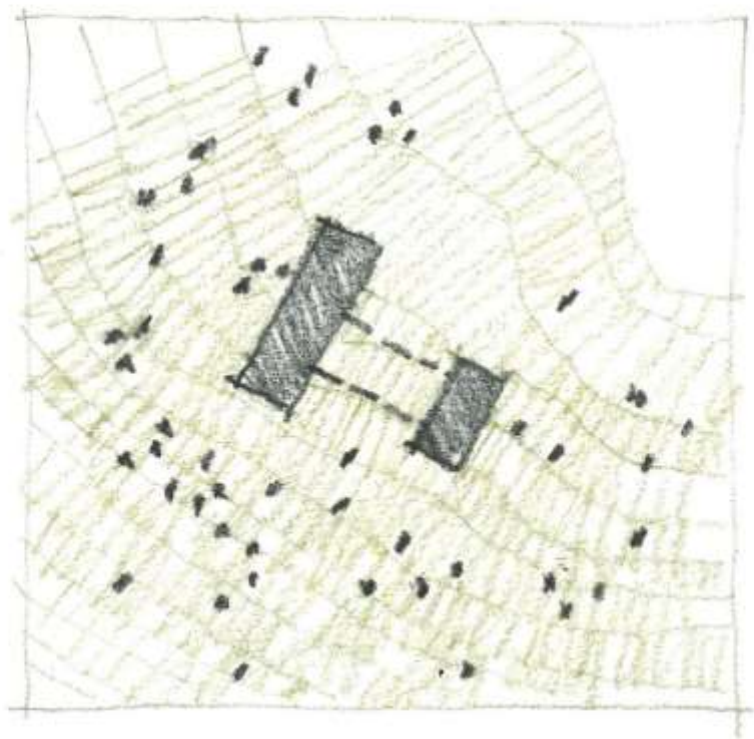
## **BRIDGE HOUSE**

Project size: 8,000 SF | Site: 4.83 Acres































## VICTORIAN | MUSIC BOX

Project size: 6,800 SF







## MAIN FLOOR

- 1 ENTRY PORCH
- 2 OFFICE/STUDY
- 3 LIVING ROOM
- 4 POWDER ROOM
- 5 DINING
- 6 KITCHEN
- 7 BREAKFAST NOOK
- 8 OFFICE/SUN ROOM
- 9 GARAGE WITH CAR LIFT
- 10 OUTDOOR LIVING ROOM
- 11 ENTRY CLOSET
- 12 ELECTROCHROMIC GLASS WINDOW
- 13 HISTORIC COAL SHOOT REPURPOSED INTO SKY LIGHT







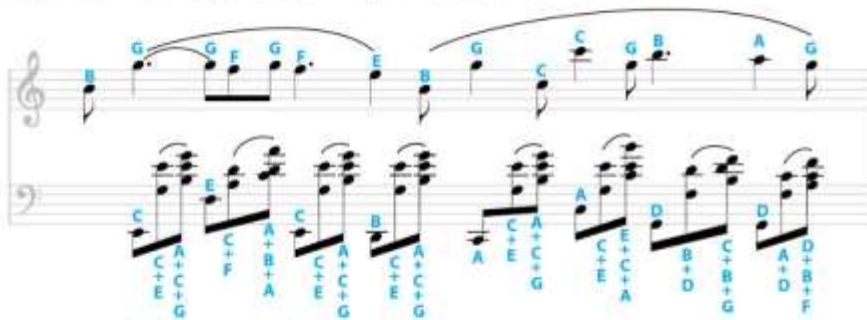


# CREATING A MUSICAL FACADE

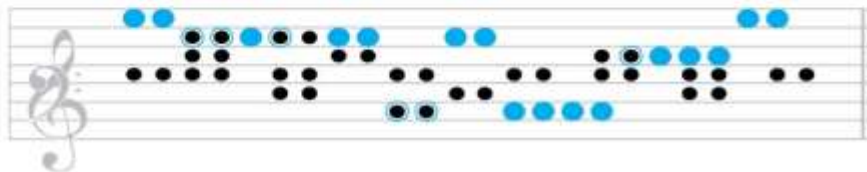
## FREDERICK CHOPIN'S "Nocturne in e-flat major, op. 9, no. 2"



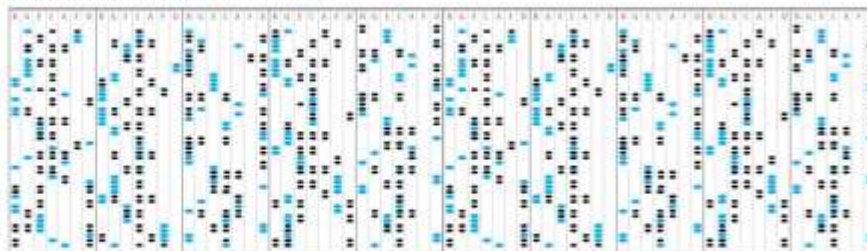
STEP #1: Assign each note it's corresponding key & then the number of perforations corresponds to the length of time the note is held.



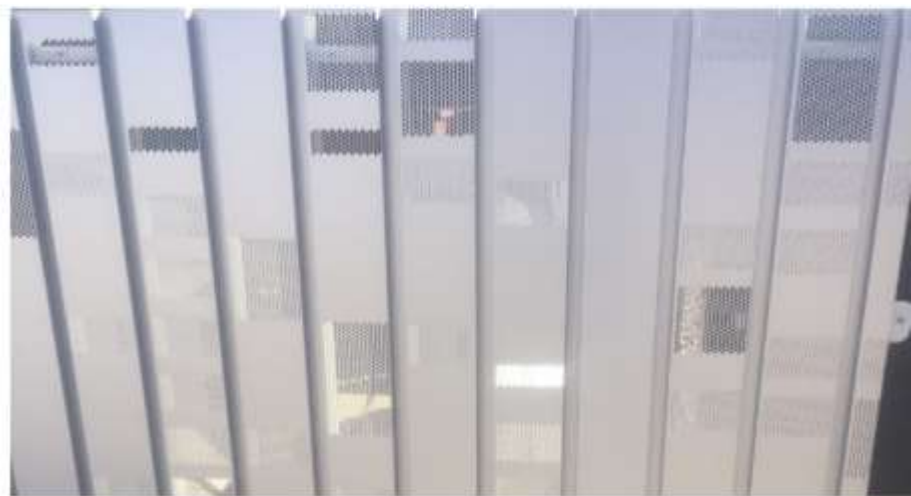
STEP #2: Combine the treble clef and bass clef into one music staff using the result of step #1.



STEP #3: Aggregate the results of step #1 & #2 then apply it to perforated portion of the facade.













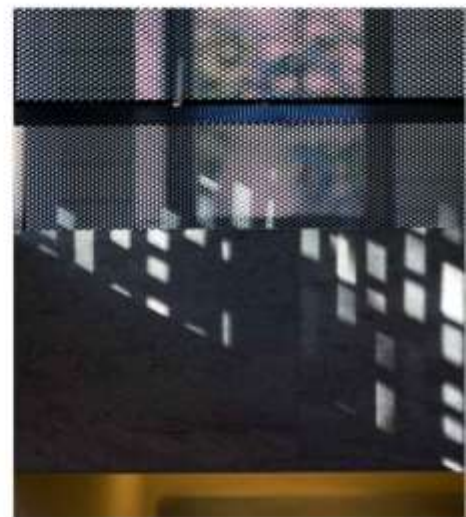
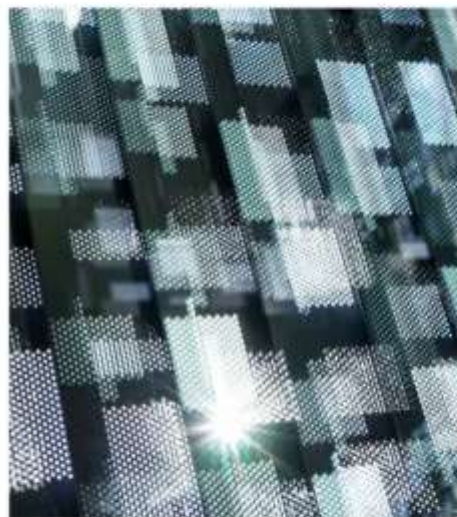


















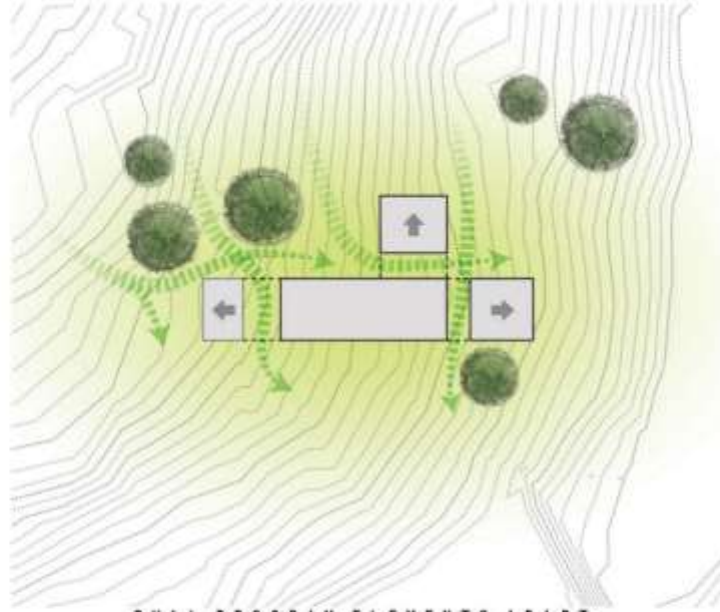






## **GAMMEL DAM**

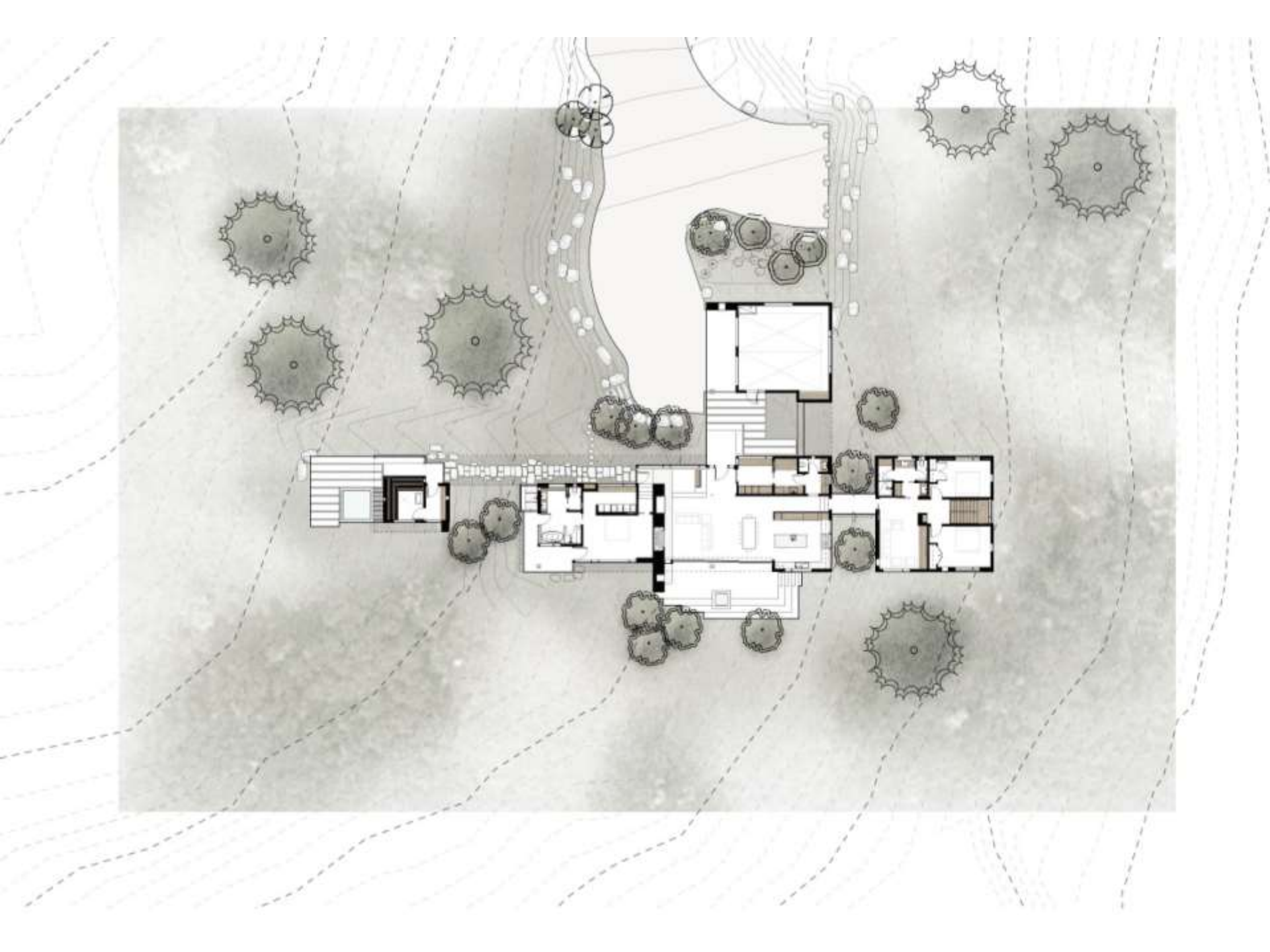
Project size: 4,320 SF | Site: 11.76 Acres



PULL PROGRAM ELEMENTS APART  
INTEGRATE INTO LANDSCAPE & SLOPE

















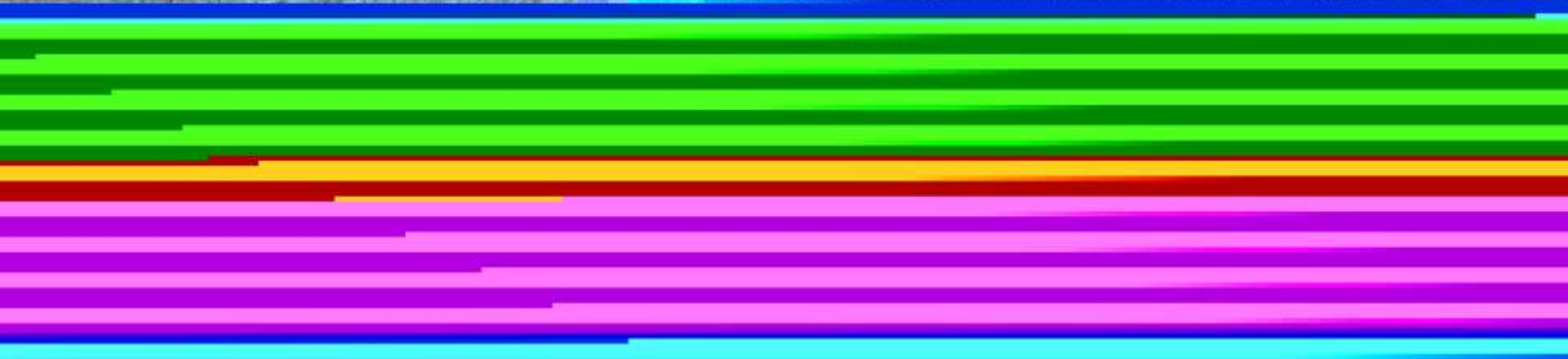


























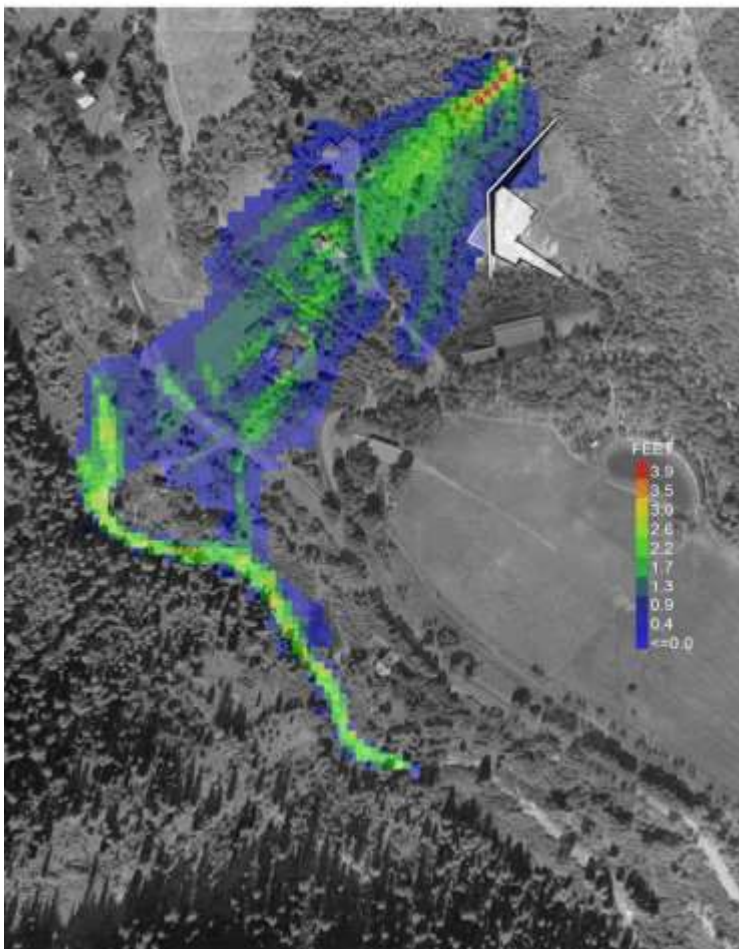
CURRENT

---



## WALL HOUSE

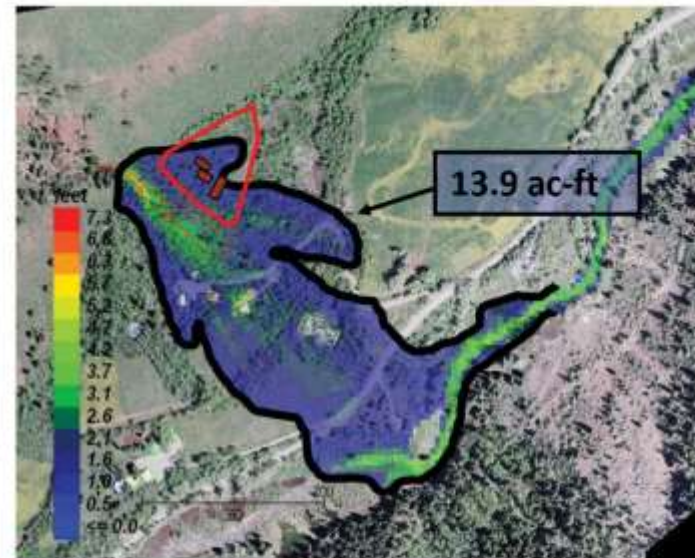
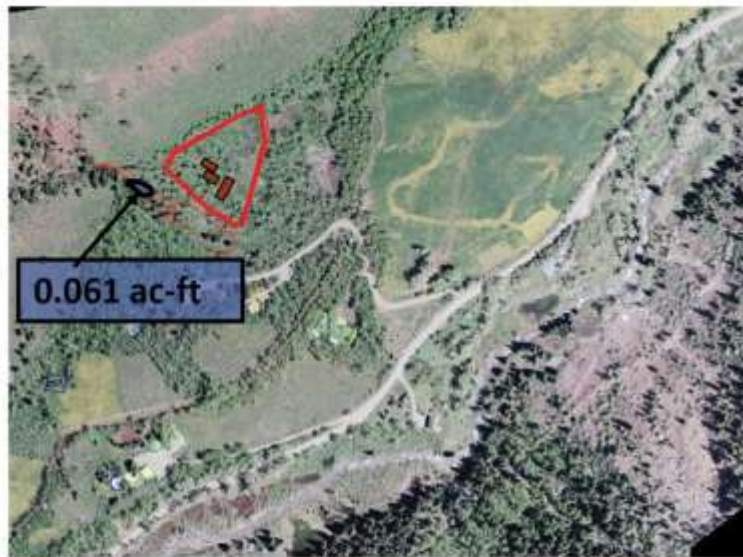
Project size: 8,250 SF | 35 Acres



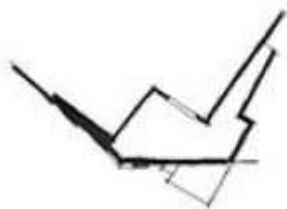
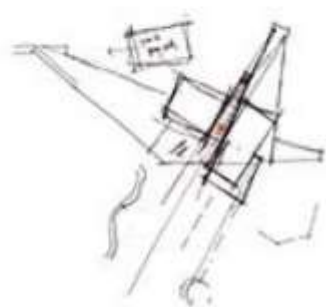
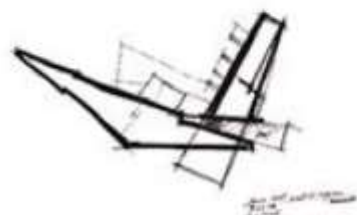
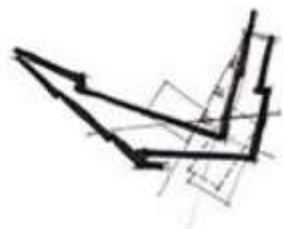


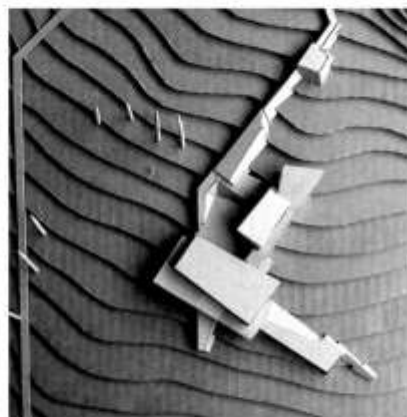
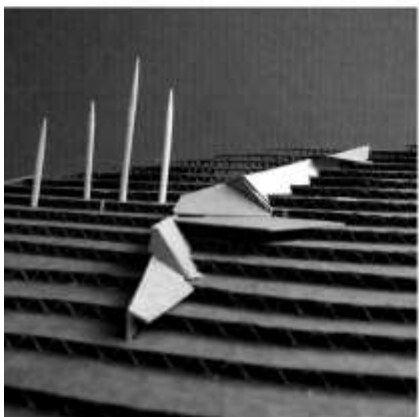
Approximate Extent of Mud Flow Volume based on Cherek Method:

$$0.76 \text{ ac-ft} / \text{mi}^2 * 0.081 \text{ mi}^2 = 2,682 \text{ ft}^3 = \underline{0.061 \text{ ac-ft}}$$



(FLO-2D predicts 13.9 ac ft)



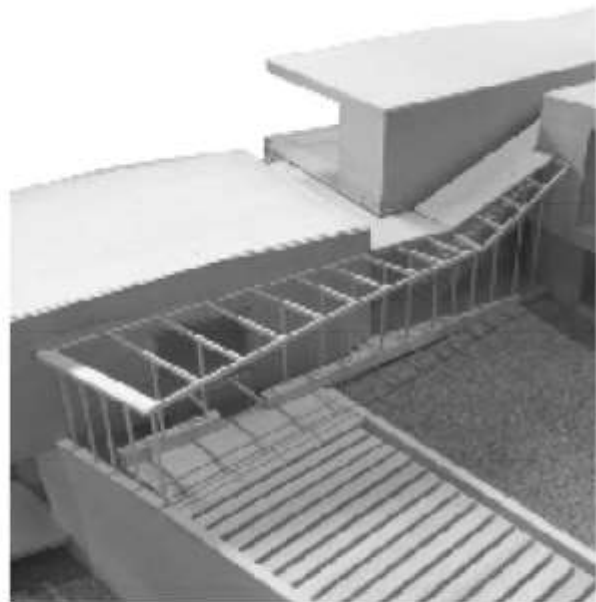
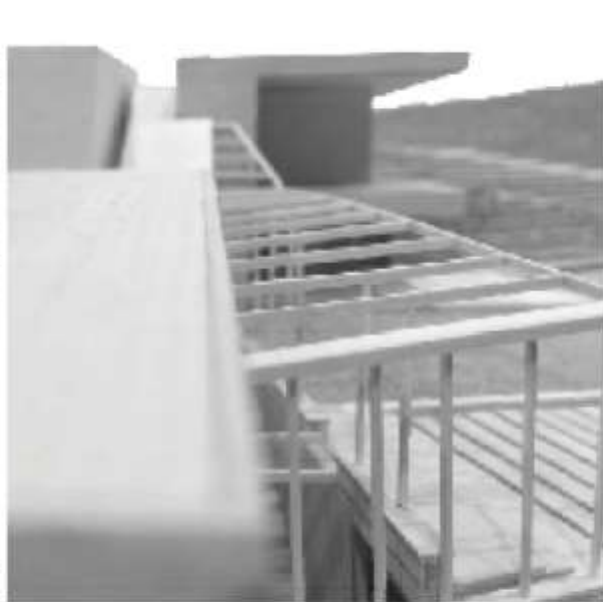






- 1. HOUSE
- 2. DRIVEWAY
- 3. DRIVEWAY
- 4. RECREATION PROPERTY
- 5. SERVICE TROUGH
- 6. SERVICE BASIN
- 7. AVALANCH RISK ZONE











CORAL MOUNTAIN WAVE

















# ETHICS

## THIS ISN'T NORMAL

THIS IS AN UPPISING  
OF RESPONSIBLE INNOVATION,  
SUSTAINABLE COLLABORATION,  
BETTER MATERIALS,  
TRANSPARENT COMMUNITIES,  
+ ALL AROUND GOOD USES.

WE CREATED <sup>ORAL MTN.</sup> OUTSTANDING.

TO SMASH THE FORMULA, TO  
LIFT THE LID ON THE TRADITIONAL  
~~CONCRETE DEVELOPMENT~~  
~~SUPPLY CHAIN~~ + ~~PAVE~~ YOU CAN  
ACTUALLY PRODUCE GREAT ~~BUILDINGS~~  
~~CONCRETE~~ <sup>BUILDINGS</sup> ~~CONCRETE~~  
+ ~~CONCRETE~~ IN A SUSTAINABLE WAY.

## SUSTAINABILITY MEANS RESPONSIBLE INNOVATION.

WE BUILD PRODUCTS BY MAKING  
EVERY DECISION WITH THE HIGHEST  
REGARD FOR THE ENVIRONMENT...

THERE ARE TWO HALVES  
TO TRUE SUSTAINABILITY:  
THE ENVIRONMENT  
+  
THE PEOPLE.

<sup>buildings</sup>  
OUR ~~CLOTHES~~ AREN'T JUST  
BUILT BETTER, THEY'RE  
BUILT RESPONSIBLY.

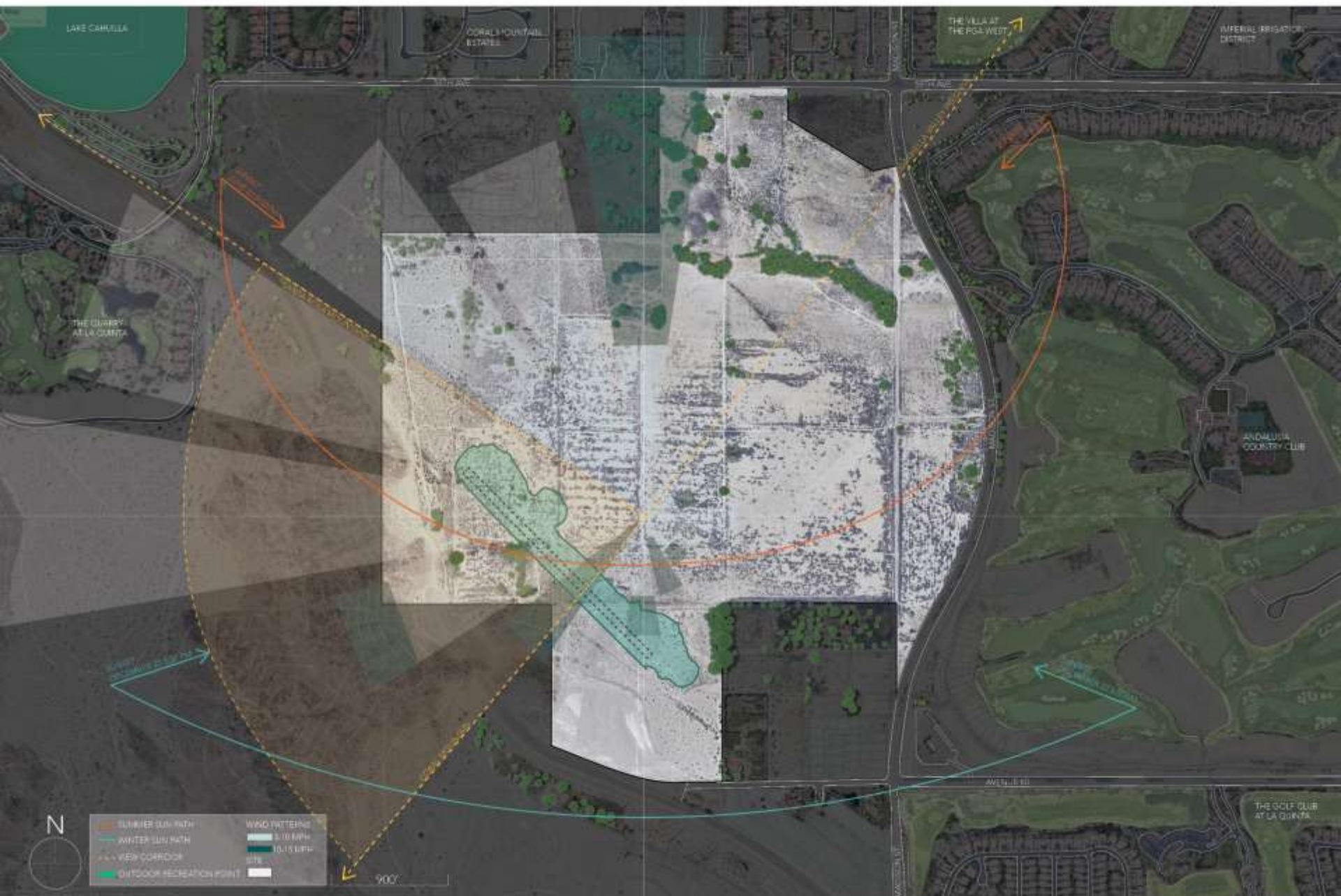


# OUTERKNOWN

WE CREATED <sup>CORAL MTN.</sup> ~~OUTERKNOWN~~  
TO SMASH THE FORMULA. TO  
LIFT THE LID ON THE TRADITIONAL  
<sup>REPORT DEVELOPMENT</sup> ~~SUPPLY CHAIN~~ + PROVE YOU CAN  
<sup>↓ SELL</sup> ~~ACTUALLY PRODUCE GREAT BUILDINGS~~  
<sup>↓ EXPERIENCES</sup> ~~MENSWEAR~~ IN A SUSTAINABLE WAY.

Our <sup>buildings</sup> ~~CLOTHES~~ AREN'T JUST  
BUILT BETTER, THEY'RE  
BUILT RESPONSIBLY.

THIS ISN'T NORMAL.  
THIS IS AN UPRISING:  
OF RESPONSIBLE INNOVATION,  
SUSTAINABLE COLLABORATION,  
BETTER MATERIALS,  
TRANSPARENT COMMUNITIES,  
+ ALL AROUND GOOD VIBES.





























## DNA ALPINE

Project size: 3,900 SF | 75 Acres











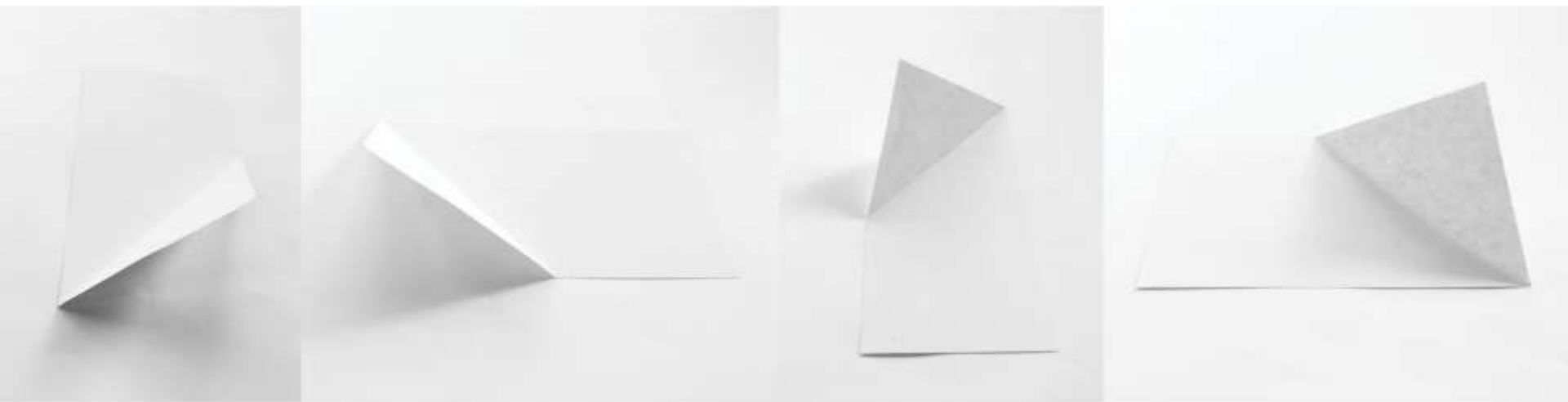
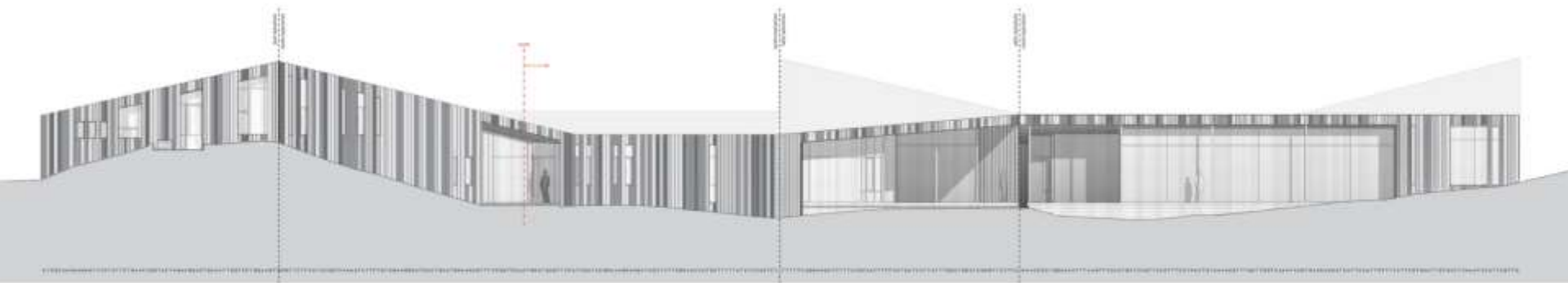








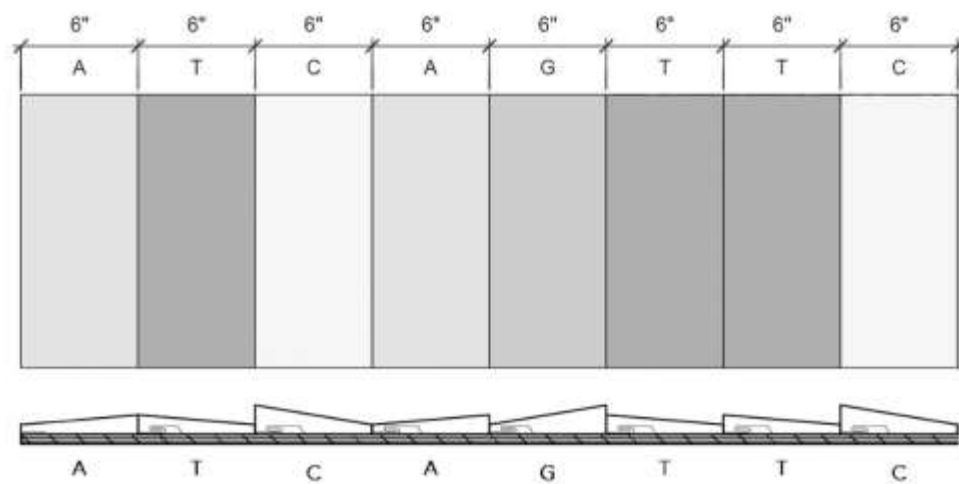




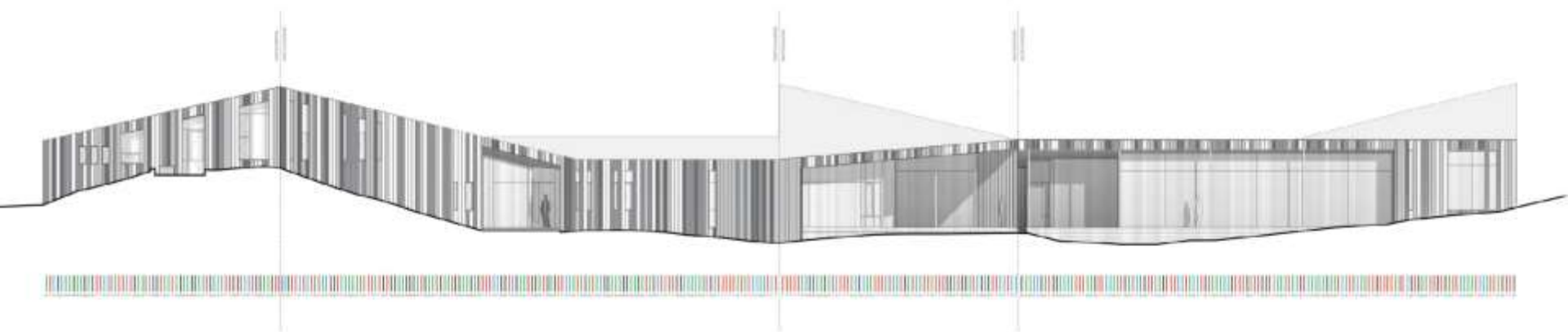
















CULTURE

---









































AIA WMR FIRM OF THE YEAR

**CCY** ARCHITECTS





















# THANK YOU

---

## CCY ARCHITECTS

This concludes The American Institute of Architects  
Continuing Education Systems Course

John Cottle, FAIA  
CCY Architects - Principal

[jcottle@ccyarchitects.com](mailto:jcottle@ccyarchitects.com)  
970.927.4925 office

