



688th Cyberspace Wing



Colonel Eric DeLange
Commander



Speed of Military Effects by Domain/Era



DOMAIN: ERA

Space: ICBM

15,000

Air: Jet

1,500

Air: Propeller

440

Sea: Nuclear

35

Sea: Sail

5

Land: Mechanized

15

Land: Infantry

2.5

0

2000

4000

6000

8000

10000

12000

14000

16000

MILES PER HOUR







Enter Cyberspace



UNCLASSIFIED

Early Days of Cyberspace Power



UNCLASSIFIED



Mission

Deliver innovative combat capabilities in defense of the Nation

Priorities

- *Win today's fight*
- *Prepare for tomorrow's fight*
- *Take care of our Airmen and our families*

Lines of Effort

- *Support the warfighter ... with employment of combat capabilities*
- *Build the force ... for Air Force's cyber, E&I and IO mission*
- *Advance the art ... through rapid, innovative fielding of capabilities*
- *Prepare the people ... so every member can reach his/her full potential*





688th Cyberspace Wing

38th Cyberspace Engineering Installation Group

38th Engineering Squadron

85th Engineering Installation Squadron

38th Cyberspace Readiness Squadron

38th Contracting Squadron

38th Operations Support Squadron

318th Cyberspace Operations Group

90th Cyberspace Operations Squadron

346th Test Squadron

318th Operations Support Squadron

92d Cyberspace Operations Squadron

39th Information Operations Squadron

Detachment 1

Detachment 2

688th Cyberspace Operations Group

833d Cyberspace Operations Squadron

834th Cyberspace Operations Squadron

835th Cyberspace Operations Squadron

836th Cyberspace Operations Squadron

837th Cyberspace Operations Squadron



688 CW Unit Locations





“BOSDEE” – Our Lines of Effort



Build



Build, Engineer and Install Air Force Network infrastructure worldwide



Operate



Operate enterprise mission services for ~1 million AF users worldwide



Secure



Secure enterprise infrastructure and DoDIN mission entities by deterring attack vectors



Defend



Defend \$14.2B AF enterprise network and key mission systems



Extend



Extend Air Force Network & provide tactical communications in remote locations



Engage



Engage cyber capabilities in support of Combatant and Air Component Commanders





38 CEIG



Mission-Focused Cyber Systems

AF Cyber Enterprise: 300 Sites worldwide



Air Superiority

Schoolhouse

Cyber Superiority

Agile Cbt Spt

Global Mobility

Global Strike

Space Superiority

Special Ops

Homeland Def

Flight Tng

Contingency Ops

Engagement

Distribution/Wireless/RF

Voice/Data/Video

Network Control Centers

C2/Mission Nets

Mobile Computing

Long-Haul/SATCOM

NETLAW/Functional Spec

Industrial Control Systems

AF Work Plan

Oper'l Engr/Spec Msn Teams



"The capability to deliver airpower is intimately dependent on the ability to operate effectively in cyberspace, a domain in and through which we conduct all of our core missions" – Gen (Ret) Mark Welsh





Cyber Protection Teams

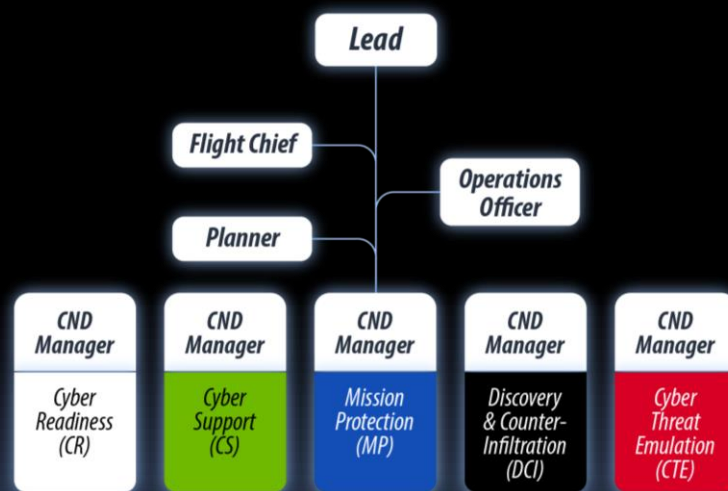


CPT Mission – Rapidly improve cyberspace defenses by discovering, detecting, analyzing, and mitigating threats and vulnerabilities to critical DoD missions in cyberspace

USCYBERCOM CPT CONSTRUCT

Five Squads

- Cyber Readiness (CR) – Assesses compliance & evaluate system defenses
- Cyber Support (CS) – Enhance cyber security posture
- Mission Protection (MP) – Conduct cyber risk analysis & provide mitigation solutions
- Discovery & Counter Infiltration (DCI) – Hunt for adversary activity
- Cyber Threat Emulation (CTE) – Emulate cyber threats to educate & test current system defenses



Organized:

National

Service

DODIN - DISA

CCMD





Questions

DOMINATE!!



