



Scan to verify, or visit [www.ags.org/verify](http://www.ags.org/verify)

# LABORATORY-GROWN DIAMOND REPORT

## LABORATORY-GROWN DIAMOND GROWTH DETAILS

Laboratory-grown diamonds are produced in a facility using one of the following methods:

- High pressure and high temperature (HPHT): Produced in a press under immense pressure and temperature.
- Chemical vapor deposition (CVD): Produced layer by layer using hydrocarbon gas.

Post-growth manufacturing processes may be utilized to modify color.

**Growth Method:**

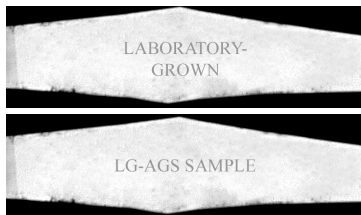
**CVD**  
(Chemical Vapor Deposition)

**Type:**

**Ila**

## LASER INSCRIPTION

The "Laboratory-Grown" inscription and unique identifier pictured below are required by AGS Laboratories.

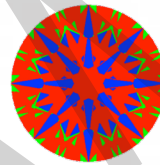


## LABORATORY-GROWN DIAMOND CUT DETAILS

Cut is the most important of the 4Cs as it has the greatest impact on the brilliance, sparkle, and overall beauty of a laboratory-grown diamond.

**Cut Grade**  
**Light Performance**  
**Polish**  
**Symmetry**

**AGS Ideal 0**  
**AGS Ideal 0**  
**AGS Ideal 0**  
**AGS Ideal 0**



AGSL Computer Generated Light Performance Map (ASET®) for this Diamond.  
U.S. Patent No: 7,355,683

Brightness Contrast Less Bright Least Bright

For more information, please visit [ags.org/aset](http://ags.org/aset).

## SHAPE & MEASUREMENTS

**Shape and Style:**

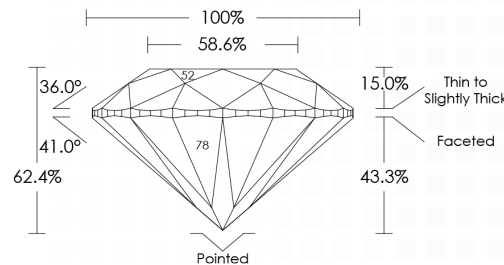
**Round Brilliant**

**Measurements:**

**6.50 - 6.51 x 3.95 mm**

**Carat Weight:**

**1.015 cts**



## LABORATORY-GROWN DIAMOND COLOR AND CLARITY DETAILS

AGS Laboratories color and clarity grades for laboratory-grown diamonds align with industry-standard diamond scales, but are designated as "LG" ("Laboratory-Grown") to distinguish them from natural diamonds.

It is important to note that the color and clarity grades do not reflect the rarity of a laboratory-grown diamond, but rather the quality and consistency of the manufacturing process.

**Color Grade:**

**LG-D**

**Clarity Grade:**

**LG-VS2**

Clarity Characteristics: Feather, Growth Remnant, Flux Cloud

**Fluorescence:**

**Negligible**

**Comments:**

Girdle inscribed "LABORATORY-GROWN" and "LG- AGS SAMPLE."

### DIGITAL REPORT:

This is an official digital AGS Laboratories Report. To order an official paper copy of this digital report with additional security features, visit [www.ags.org/order](http://www.ags.org/order).

This Report is a description of the characteristics of the laboratory-grown diamond using the grading techniques, testing procedures, and equipment used by AGS Laboratories as of the issue date. This is not an appraisal or guarantee. See [www.ags.org/terms](http://www.ags.org/terms) for more information and important terms and conditions that may be modified from time to time.