

Point-of-Care Ultrasound

Robert Kollpainter, PA-C, FAPACVS, RDMS, CAQ in CVTS

Aspirus Heart & Lung Surgery

Aspirus Heart & Vascular Institute

Wausau, Wisconsin

The Point-of-Care “Cadre”

Jeremy Amayo, PA-C

Hana Dubsky, PA-C

Nicole Heidenreich, PA-C

Kim Kuphal, PA-C

Jonathan Monti, PA-C

Frank Norman, MPAS, PA-C

Thomas Pahl, PA-C

SPOCUS

The logo for SPOCUS features the word "SPOCUS" in a large, dark red, serif font. The letter "O" is replaced by a stylized graphic of a stethoscope with a signal icon (a central dot with three curved lines above it) inside the chest piece. Below the text are two horizontal lines, the top one being thicker than the bottom one.

The Point-of-Care “Panthers”

FFIU

Ana Rosell, PA-S

Lana Mocco, PA-S

Paige Lelati, PA-S

Ziyad Fares, PA-S

Kelly Meyer, PA-S

Carlos Arias, PA-S

Laurent Augustin, PA-S

Anne Salsbury, PA-S

Zahra Bandiali, PA-S



FOAM/FOAMed

ULTRASOUND PODCAST.COM

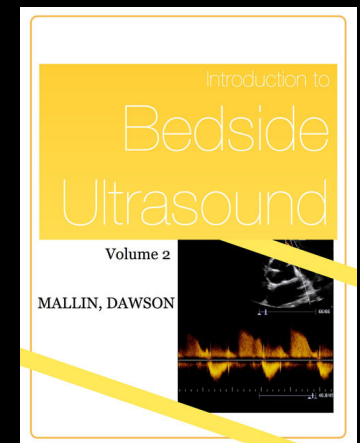
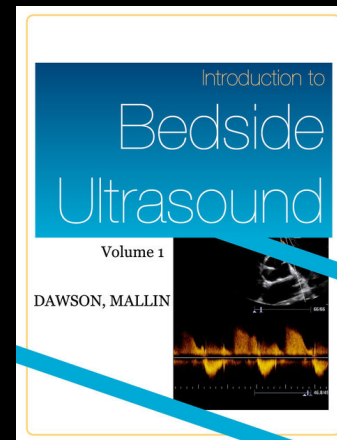
Emergency Ultrasonography

Resources and Tutorials on EM Ultrasound


**5 MINUTE
SONO BLOG**

**SonoSpot: Topics in
Bedside Ultrasound**

Share & highlight US cases, tips & tricks, research, news, people and events



SPOCUS

The word "SPOCUS" is written in a bold, black, serif font. The letter 'O' is replaced by a black stethoscope icon, which includes a chest piece with radiating lines above it, representing sound waves. The entire word is contained within a white rectangular box with a thin black border. Below the box, there is a dark, reflective surface that shows a faint, inverted reflection of the word and the stethoscope icon.

Questions?

Thank You...