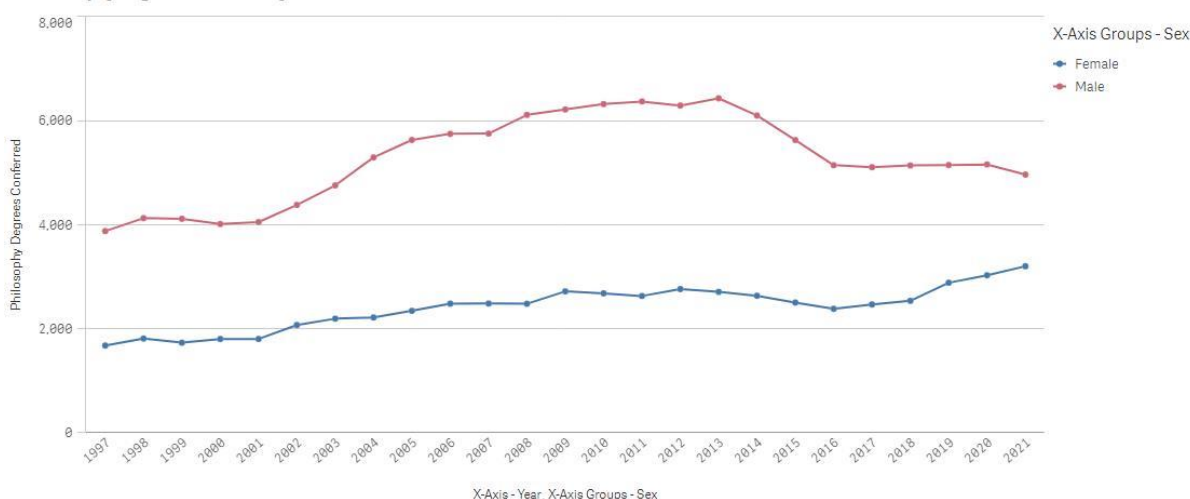


Women in Philosophy

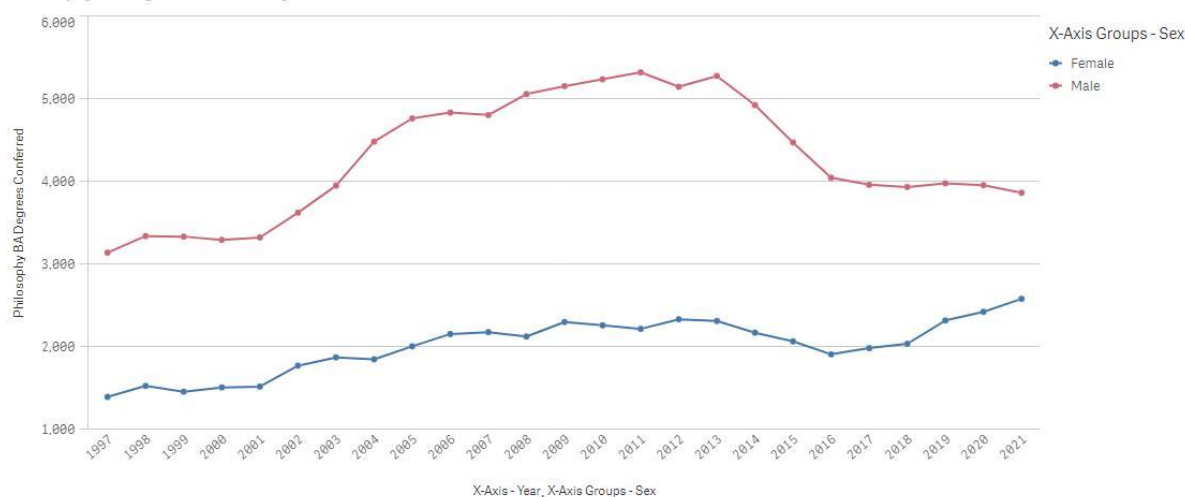
In 2021 (the most recent year for which data were available), approximately 39 percent of philosophy degree completions at all levels were women. This represents a considerable increase in the share of degrees earned by women, which was 19 percent in 1987, and approximately 31 percent in 2014. The gender distribution of bachelor's degrees has increased from about 30 percent in 1997 to about 40 percent in 2021, with a particular increase from 2018 to 2021. The gender distribution of master's degrees has been more variable, with an increase from about 28 percent to about 33 percent in 2021. The gender distribution of doctorates in philosophy has also been variable, with an overall increase from about 25 percent in 1997 to about 30 percent in 2021.

All Philosophy Degrees Conferred by Sex



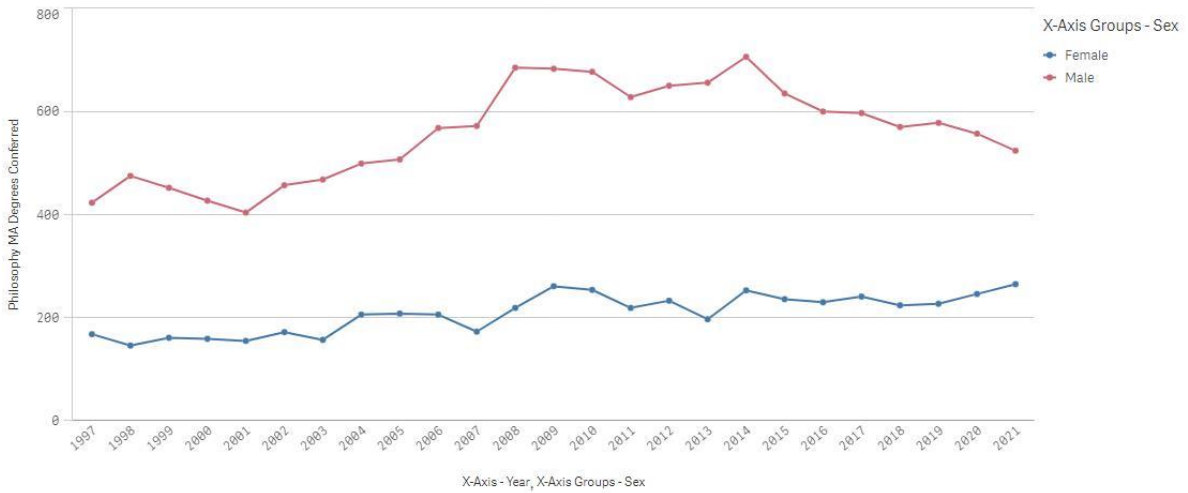
SOURCE: Department of Education, National Center for Education Statistics, Integrated Postsecondary Education Data System, Completions Survey, unrevised provisional release data.

Philosophy BA Degrees Conferred by Sex



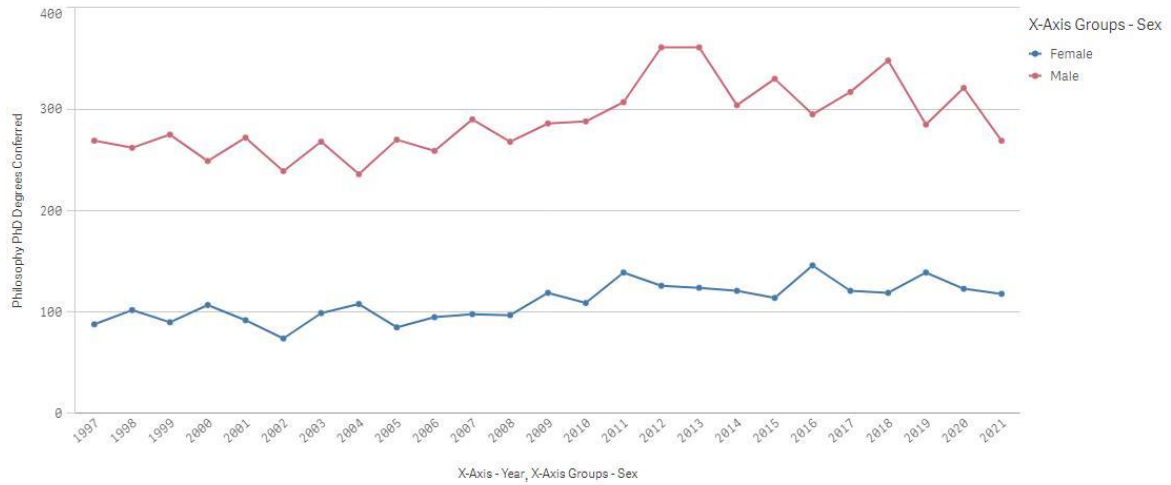
SOURCE: Department of Education, National Center for Education Statistics, Integrated Postsecondary Education Data System, Completions Survey, unrevised provisional release data.

Philosophy MA Degrees Conferred by Sex



SOURCE: Department of Education, National Center for Education Statistics, Integrated Postsecondary Education Data System, Completions Survey, unrevised provisional release data.

Philosophy PhD Degrees Conferred by Sex



SOURCE: Department of Education, National Center for Education Statistics, Integrated Postsecondary Education Data System, Completions Survey, unrevised provisional release data.