

PIONEERING THE GREEN ECONOMY



NORTHERN CAPE

A MODERN, GROWING & SUCCESSFUL PROVINCE

Investment
Prospectus
2024

CONTENTS

1	Progress on the path to industrialisation and a green economy, by Dr Zamani Saul, Honourable Premier of the Northern Cape
2	Introductory remarks: Investing in sustainable tourism futures by Mr Abraham Vosloo, Member of the Executive Council for Finance, Economic Development and Tourism
3	The Northern Cape has great potential: the National Department of Mineral Resources and Energy
4	Northern Cape at a glance
5	Snapshot of the country investment strategy
6	National development plan: Frontiers
7	Economic clusters
8-9	Northern Cape GH2 strategy and master plan
10	Proposed Boegoeberg SEZ
11	Proposed Namakwa SEZ
12-13	Upington Industrial Park
14	Kathu Industrial Park
15	Quiver Green Group: Biomass Project
16-17	Prieska Power Reserve
18-19	Orion Minerals
20	Maintenance, Repair and Overhauling (MRO)
21	Namakwa Irrigation Project
22	Big Hole Precinct
23	Mayibuye Precinct
24-25	Tourism investment opportunities
26-27	Airport investment opportunities
28	Meetings, conferences and events
29	National incentive schemes
OBC	Access to international markets

IMAGE CREDITS: Irrigation, Mark Stebnicki on Pexels and Joel Dunn and Vidar Nordli-Mathisen on Unsplash; Mining, Kevin Wright/Vedanta; Springbok Airport, Michael Ellis; Solar farm, SCATEC; Trucks, SANRAL; Tourism, Northern Cape Tourism Authority.



FOREWORD

PROGRESS ON THE PATH TO INDUSTRIALISATION AND A GREEN ECONOMY



By Dr Zamani Saul,
Honourable Premier of
the Northern Cape

The Northern Cape Province has many unique and unexplored attributes. The Province is the largest in terms of size in the country and has a coastline of approximately 300km. It is also the least densely populated province in the country.

The competitive advantage that we hold as the Northern Cape is our tremendous geographic size, our mineral riches, our sun, wind and hydro-energy resources and our fresh produce, including vegetables, grains, fruit and protein. We are also home to the best wines in the country. Awe-inspiring landscapes and beautiful fauna and flora define our tourism offering.

The Province is host to most of South Africa's renewable energy projects, with its superior endowment of solar irradiation and wind speeds. It also has the potential to contribute to global green hydrogen production and play a significant role in the just energy transition.

Green hydrogen production is able to effect a paradigm shift in the fortunes of the people of the Northern Cape and the rest of South Africa. It will also support the implementation of South Africa's COP27 commitments in terms of the global decarbonisation agenda.

Tourism is one of our brightest jewels, and we continue to strengthen our efforts to market the province locally and internationally, while at the same time seeking investment in new assets, products and experiences.

Whether the traveller seeks adventure or silence and space, unmatched luxury or tough terrains, the Northern Cape provides superior experiences in a myriad of public and private reserves. Adventure tourists can expect a treat and diverse natural beauty abounds, from the Kalahari Desert and the Augrabies Falls to the unique glories of the flowering Namaqualand and two UNESCO-recognised sites. These assets are backed by strong incentives for investors, a well-established hotel and accommodation sector, a growing conference sector and friendly and professional staff whose Northern Cape welcome is famously generous.

The strong mining sector also offers opportunities, with the province offering profitable investment opportunities in mineral and metal processing and the production of other unique products.

With the abundance of resources, energy and other critical investment infrastructure that is being created, the Northern Cape is showing clear clusters of value-addition and manufacturing. This is the precursor to industrialisation and becoming a modern and growing province.

This is not a road to be travelled alone though. The province require partners and investors to realise access to markets, capital and technology. I therefore urge global market leaders to secure the best for your consumers and to expand your markets by creating a manufacturing and supplier base in the Northern Cape that serves the global market and has direct access to SADC.

We proudly present to you the Northern Cape Investment Prospectus and invite you to explore what we have to offer.

INTRODUCTORY REMARKS

INVESTING IN SUSTAINABLE TOURISM FUTURES



Mr Abraham Vosloo,
Member of the Executive Council
for Finance, Economic
Development and Tourism

Tourism is recognised for its immense potential and its significant contribution to the economy. The 1996 White Paper on the Development and Promotion of Tourism affirmed South Africa's approach to tourism as one which is "government-led, private-sector driven and community-based" and grounded in cooperation and close partnerships between all stakeholders. Government's recognition of the critical importance of tourism in the economy is further evident in the sector's inclusion as one of the priority areas in the initial Industrial Policy Action Plan (IPAP), the New Growth Path (NGP, 2010) and the National Development Plan (NDP, 2012).

The tourism sector is expected to make the requisite contribution to job creation and the continued growth of the economy. The NDP is the national framework for the development of the South African economy. It recognises tourism as a highly labour-intensive industry which stimulates the development of small businesses and which generates foreign direct investment and significant export earnings. Emphasis is placed on increasing the number of tourists entering South Africa and the amount spent; the availability of tourism infrastructure; positioning South Africa as a regional shopping and business centre; and ease of access by air and travel facilitation through favourable visa regimes.

The Northern Cape Provincial Growth and Development Plan recognises the importance of tourism and its contribution to the growth of the provincial economy and job creation. The provincial priorities identified for tourism growth include among others: effective marketing, transformation of the tourism industry and SMME development, tourism infrastructure development, tourism incentives and funding and unlocking the Oceans Economy.

Investing in the supply side of our tourism economy is a critical part of achieving the socio-economic benefits to be derived from tourism, such as increased market share of tourist arrivals, tourism competitiveness and the consequent increase in employment opportunities.

We invite you to explore the many investment opportunities offered by the Northern Cape, and while in our province, take time to experience the splendour of its natural beauty and diversity.

MINING CAN INCREASE ECONOMIC DEVELOPMENT

The Northern Cape has great potential, as the National Department of Mineral Resources and Energy notes, in this document prepared for the Northern Cape Mining and Energy Investment Conference.



Vedanta Zinc International's Gamsberg project is one of the biggest in the country, and a significant investment in the Northern Cape economy. Credit: Kevin Wright/Vedanta

South Africa's mining industry continues to play a vital economic and socio-economic role in the country's development. Furthermore, the country sits on extensive reserves and remains a world leader in the production of many minerals, despite recently producing reduced sales revenues. The country continues to have the potential to supply a large share of the global demand for many commodities.

The country's mining industry makes a significant direct contribution to GDP. However, the contribution has been on the decline from 0.2% in 2015 to -0.3% in 2022. However, in 2021 the mining industry contributed a remarkable 0.5% following the easing of strict Covid-19 measures. In 2022, mining contributed R204.2-billion or -0.7% to gross domestic product from R219.5-billion in 2021, a significant decrease of R15.3-billion. This can be attributed to the challenges of electricity supply that put enormous strain on the economy. In the first quarter 2023, the mining industry grew by 0.9% to R200.1-billion from R198.3-billion that was achieved in the last quarter of 2022. The mining sector contributed an average of 0.04% to the GDP's total value of R4.6-trillion. In the first quarter, the total sales revenue declined slightly by 1.8% to R191.9-billion quarter-on-quarter from R195.5-billion for Q4. This was due to a decline on sales quantities. Year-on-year also saw a decline

of 6% from R204.1-billion that was achieved in Q1 2022.

The country accounts for 91% of known global reserves of the platinum group metals (PGMs), 75.2% of chrome, 30.2% of manganese, 17.5% of vanadium and 13.8% of gold reserves. Thus, with exploration continuing, there is room for more reserves to be discovered, making use of the latest technologies and methods, further improving the country's position in the mineral industry, globally.

The mining industry contributed about R880-billion in 2022, as compared to about R846-billion in 2021, a 4.1% increase. Despite the rail and road infrastructure constraints that resulted in the industry failing to take advantage of improved prices and demand for the year 2022.

In the first quarter 2023, mining employment increased by 0.6% to an average of 476 634 of employees from 473 867 of employees that was recorded in Q4 2022. Earnings also increased by 1.2% to R46.2-billion from R45.6-billion in Q4 2022.

The Northern Cape is one of the South African provinces that has a great mining potential for economic development. It is characterised by diamonds, iron ore and manganese. Apart from these minerals, the province is rich in new technology minerals such as zinc, nickel, copper and cobalt. The Northern Cape is also home to most of South Africa's renewable projects.

Industrial clusters in the Northern Cape include the Namakwa SEZ which will promote mineral beneficiation, the Kathu Industrial Park which will promote a large range of business opportunities as well as the deepwater port at Boegoebaai and the Upington Industrial Park to promote manufacturing, particularly the manufacturing of solar-power components.

Therefore, there is a renewed call for mines to use their social licences to increase economic development and address issues including housing, skills, local enterprises and services in the areas in which they operate in order to grow the local economies.

ECONOMICS

Gross Domestic Product

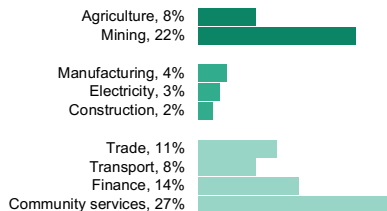
R 148 bn

Current prices

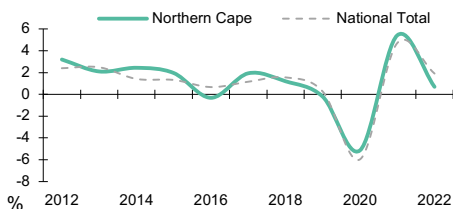
2.2%

of national GDP

Sector composition



Economic growth: 2012-2022



Top 10 sectors (GVA) - R billions

Sector	2022
Mining of metal ores	26.88
Public administration and defence activities	13.96
Agriculture and hunting	11.03
Health and social work	9.17
Education	8.71
Finance and Insurance	7.77
Wholesale and commission trade	7.47
Other business activities	6.92
Land and Water transport	5.22
Post and telecommunication	5.12
All other smaller sectors	32.07

Economic growth annual % change

	2021-2022	10 year avg.
Northern Cape	0.7%	1.0%
National Total	1.9%	0.9%

LABOUR MARKET

Employment

324,000

number of jobs

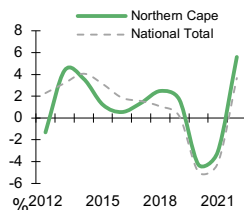
2.1%

of national employment

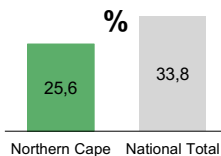
Jobs

Category	2022 share	Created / lost since 2012
Primary		
Agriculture	12.8%	2 220
Mining	14.1%	
Secondary		
Manufacturing	4.0%	2 050
Electricity	0.5%	
Construction	5.5%	
Tertiary		
Trade	17.4%	9 960
Transport	3.0%	
Finance	9.9%	
Community	32.8%	

Employment growth: 2012-2022



Unemployment



Informal employment 2022 - millions

	Employees	Informal	% informal
Northern Cape	0.32	0.03	8.9%
National Total	15.32	2.86	18.7%

Employment growth

Annual % change

Region	2022	10-year avg
Northern Cape	5.6%	1.3%
South Africa	3.7%	0.9%



COUNTRY INVESTMENT STRATEGY



Defining FDI

Types of Fixed Direct Investment (FDI)

- Greenfield Investment (GI)*
- Mergers & Acquisitions (M&A)
- Joint Ventures (JV)

QUALIFIED
Can Stimulate Much Needed Economic Growth & Development

- Country to Prioritize Development Objectives
- Job Creation
- Skills Development
- Technology Diffusion and/or Demand Stimulus

*Greenfield FDI exerts the greatest relative positive effect on gross fixed capital formation (GFCF) & should be prioritised

Quality Investment is defined as:

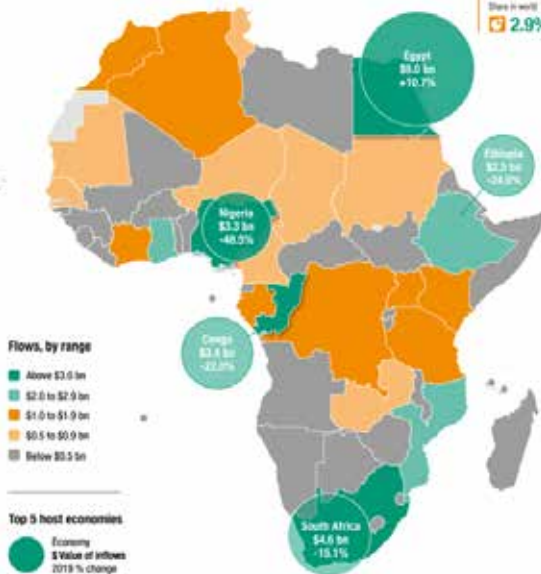
"contributing to the creation of decent and value-adding jobs; enhancing the skills base of the host economy; facilitating the transfer of technology, knowledge and know-how; boosting competition of domestic firms and enabling their access to other local and global markets; and operating in a socially and environmentally responsible manner"

DEVELOPING ECONOMIES

AFRICA

FDI flows, top 5 host economies, 2019 (Value and change)

2019 inflow
\$45.4 bn
2018 increase
-10.3%
Share in world
2.9%



Outflows: top 5 home economies

(billions of dollars and 2019 growth)



Figure A. Top 10 investor economies by FDI stock, 2014 and 2018 (billions of dollars)



FRONTIERS

NATIONAL DEVELOPMENT PLAN

GREEN HYDROGEN – SOUTH AFRICA AT THE GLOBAL FOREFRONT OF GREEN ENERGY

1



2

SEZs ANCHORING ADVANCED MANUFACTURING & LOGISTICS NETWORKS TARGETING EXPORT

INDUSTRIAL AGRICULTURE AND ADVANCED AGRO-PROCESSING

3



4

IMPACT INVESTING LINKED TO SOCIAL AND GREEN ECONOMY OBJECTIVES



CONVENE

CO-INVEST



CATALYSE

ENABLE



SECTORAL CLUSTERS

De Aar Renewable Energy

South Africa's Renewable Energy Independent Power Producer Procurement Programme (REIPPPPP) has seen more than R200-billion committed to renewable energy projects. It aims to add some 13 225MW by 2025. Fully 60% of the projects so far allocated have been in the nation's sunniest province.

The biggest solar farm so far in South Africa is Solar Capital's 175MW project at De Aar. Formerly famous as the railway junction, De Aar is becoming better known as a renewable energy hub.

Square Kilometre Array

The SKA will be the world's largest radio telescope, made up of thousands of antennae throughout Australia and Africa, centred on the area around Carnarvon in the Northern Cape. South Africa's own 64-dish MeerKAT telescope, which will form part of the SKA, started coming on line in 2016. The town of Sutherland already hosts an array of telescopes with a long history of providing scientists with excellent data in clear skies above the flat and dry Karoo.

Gamagara Corridor

Mining contributes 23.4% to the Northern Cape economy and makes up nearly 7% of South Africa's total mining value. The mineral resource of the province is wide-ranging and impressive with significant deposits of iron ore, manganese, zinc, copper, lead, titanium, pig iron, zircon and gypsum. The overwhelming majority of the world's manganese comes from the Postmasburg and Kalahari regions. The province is responsible for 25% of the world's exports of the mineral. The Northern Cape produces more than 84% of South Africa's iron ore and has two major iron belts, from Postmasburg to Hotazel, and running through Sishen and Kathu. Sishen is the most important iron-ore mine in South Africa, where operations include extraction and four beneficiation plants. The availability of natural resources, labour and infrastructure (including the Sishen-Saldanha railway line) make Sishen the ideal location.

Boegoebaai Bulk Corridor

Big plans are underway to develop a deepwater port capable of receiving large vessels at Boegoebaai. Preliminary research indicates that the project could generate income of R2.1-billion annually by handling bulk cargoes and minerals such as manganese and iron ore. There would be possibilities for linking the port to the gas fields and developing ship-repair facilities. The intention is to find a private investor or a consortium to take the project forward.

If the harbour project gets the green light, then accompanying infrastructure will follow. The best route to connect to Upington will be the subject of further studies, as will the feasibility of a new rail link. The construction requirements of a project this size would themselves be a boost to the economy of the Northern Cape.

Coastline

The Northern Cape boasts a coastline of 313km but the economic value of this asset has barely been touched, despite a growth in the abalone industry and some fishing and lobster operations.

Plans to boost the maritime economy in the province form part of two broader national programmes. Operation Phakisa is an initiative of the South African government to fast-track parts of the National Development Plan. The focus is on delivery and results, with strict timelines. "Phakisa" means "hurry up" in Sotho. One of the focus areas within Phakisa is the Oceans Economy programme. Three Northern Cape harbours feature in the list of harbours that will be further developed: Port Nolloth, Boegoe Baai and Hondeklip Bay. The last-named port has already received investment in the aquaculture sector.

Green hydrogen has several downstream use cases, that could contribute towards the development of new industries in the Northern Cape and enable the re-industrialisation of industries nationally. This is in addition to the global export market where offtake demand has greater certainty



COMPETITIVE ADVANTAGE

A. High RE Potential



State and world capacity factors of 22% and 37% on average

~1140GW of solar and 848GW of wind capacity can be built

B. Less complex topography



57% of NC land that is available for solar or wind build

Areas not suitable for RE build include protected areas e.g. Namaqua National Park

88% of NC land is considered flat enough for RE development

C. ~300km of shoreline



Coastline at Boregodd has capability to support green field deep water port

D. Large mineral deposits



29% of Northern Cape's GDP is from mining

Manganese deposits supply 20% of the global demand

Zinc and lead deposits supply 13% of the global demand

Significant mines in the area serve as key tenants for SEZs

E. International accessibility



Can be connected to key industrial hubs (Nairobi, Botswana, rest of RSA)

N10 is key national route to Namibia, and N11 to Botswana

Rail route between Allanridge (NC) to Port of Lüderitz (Namibia)

THE GREEN TRANSFORMATION

The GH2 Hub of Western SADC



POTENTIAL MARKET ASSESSMENT OTHER ECONOMIC CLUSTER



THE NORTHERN CAPE HAS INTRINSIC ADVANTAGES THAT POSITION IT AS THE IDEAL CENTRE OF A NATIONAL GREEN HYDROGEN ECOSYSTEM



NAMAKWA

SPECIAL ECONOMIC ZONE

Where you find Home, Work & Play

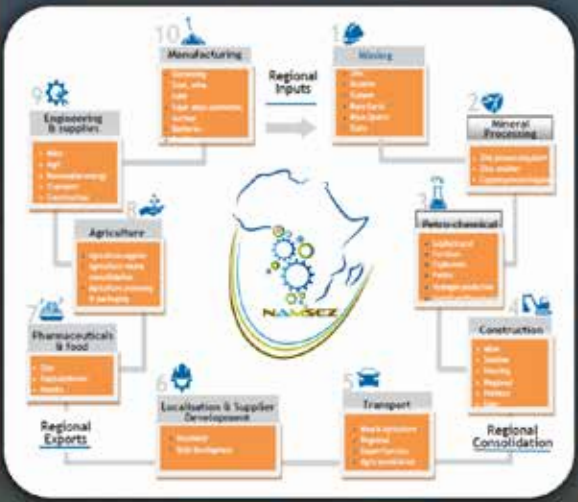
Vision
 "To be the Catalyst for Economic Growth and Integration throughout Western SADC"

Mission
 "Create an industrial hub for the West Coast and a catalyst for industrializing the western SADC area"

The proposed Namakwa SEZ is located in the small mining town of Aggeney. Aggeney is in the Khai-Ma Local Municipality within the Namakwa District Municipality of the Northern Cape Province. Aggeney is 66km from Polorader (headquarters of the local municipality) and 110km from Springbok, where the office of the district municipality is located.

The value proposition of the Namakwa SEZ is based on the existence of the Gamsberg Zinc Mine and the proposed building of Vedanta Zinc International. These would be the anchor tenants of the SEZ. It is proposed that a smelter be built to treat zinc concentrate produced at Gamsberg. The zinc concentrate produced at the existing concentrator plant will be treated in the smelter using the conventional roast-leach-electrowinning (R-L-E) process.

SECTOR FOCUS



ECONOMIC IMPACT OF THE PROJECT

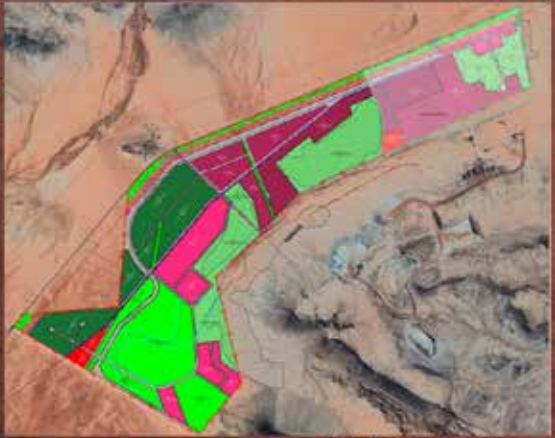
Net GDP contribution
 +R 286.4m
 +R 278.7m
 +R 10.7m

Jobs created
 5 250

Investment
 R 1.14 bn

Plot number	Area (Ha)	Zoning	Priority land use
001	58.56	E.1.1 Agricultural industry	Agricultural industry
012	13.34	E.1.1 Agricultural industry	Agricultural industry
013	8.88	E.1.1 Agricultural industry	Agricultural industry
014	41.71	E.1.1 Agricultural industry	Agricultural industry
015	16.46	E.1.1 Agricultural industry	Agricultural industry
016	6.39	Dp.2 Municipal uses	Municipal uses
017	4.68	Dp.2 Municipal uses	Municipal uses
018	11.00	L.1.1 Light industry	Light industry
019	12.28	L.1.1 Light industry	Light industry
020	13.98	L.1.1 Light industry	Light industry
021	14.80	L.1.1 Light industry	Light industry
022	11.20	L.1.1 Light industry	Light industry
023	6.41	L.1.1 Light industry	Light industry
024	41.17	L.1.1 Light industry	Light industry
025	4.26	L.1.1 Light industry	Light industry
026	14.02	L.1.1 Industry	Industry
027	16.70	L.1.1 Industry	Industry
028	12.17	L.1.1 Industry	Industry
029	19.44	L.1.1 Industry	Industry
030	44.43	L.1.1 Industry	Industry
031	45.30	L.1.1 Industry	Industry
032	49.30	L.1.1 Industry	Industry

SEZ SPATIAL LAYOUT



540,26Ha OF INDUSTRIAL POSSIBILITIES



KEY BENEFITS

- Security infrastructure upgrades, top structures, critical utility infrastructure;
- Compliance to regulatory requirements, renewable energy and resource efficient operations;
- New infrastructure development;
- Capacity building, business expansion and investment promotion;
- Development of sustainable industrial park clusters.



FUTURE INDUSTRIES THAT CAN LOCATE WITHIN THE PARK



AGRI

AGRO PROCESSING

MRO

MAINTENANCE REPAIRS & OVERHAULING





UPINGTON INDUSTRIAL PARK



SPACE AVAILABLE

lease

380 000 m²

CAR MANUFACTURING SECTOR

The park is located in an area that enables the most suitable conditions to advance technologies in the automotive sector. Ideal for OEM's and Automotive industry production



STORAGE SPACE



RENEWABLE ENERGY HUB

Bespoke space that will cater for various storage requirements. All this in a secure, well maintained and symbiotic environment for industrial business

LOCATION IS KEY - LOOK AND FEEL





Driving local economic growth



The town of Kathu - located in the Gamagara Local Municipality (GLM) - is the preferred location due to its central proximity to the Postmasburg-Hotazel iron-ore/manganese belt and various established and pending REIPPPP projects. It is envisaged that the Kathu Industrial Park (KIP) serve as a catalyst for accelerated growth of other economic sectors.

TARGETED SECTORS:

The KIP targets all economic sectors requiring serviced industrial space in the region, but with the major portion of the initial tenant makeup (study phase uptake) primarily serving the established mining sector, by virtue of the KIP's central proximity to the Postmasburg-Hotazel iron-ore/manganese belt. The KIP is also well positioned to serve the emerging REIPP sector in the region.

In addition to the ongoing development of business opportunities within the tenant supply chains, it will be the role of the KIP business incubator to expand coverage of the KIP into other sectors. Study phase tenant engagement and commitment to the project has covered all possible prospective tenants, regardless of size or level of development. The KIP development caters for every kind of tenant facilities, from large customised facilities through to smaller economically efficient mini-factories.

2 PHASES

1st Phase:
434000 m²

2nd Phase:
189000 m²





Project Background

Quiver Green Group (Pty) Ltd. is classified as an Ecosystem-based Adaptation business. As a bio-economy sector enterprise it ventures throughout the various value-chains of the green economy in South Africa, with a primary focus on the Northern Cape province.

BUSINESS FOCUSES ON HARVESTING BIOMASS

Firewood



Woodchips



Charcoal production

Bioenergy
generation plant



Investment value

Phase 1 : R 50.000 Million

Phase 2: R 100.000 Million

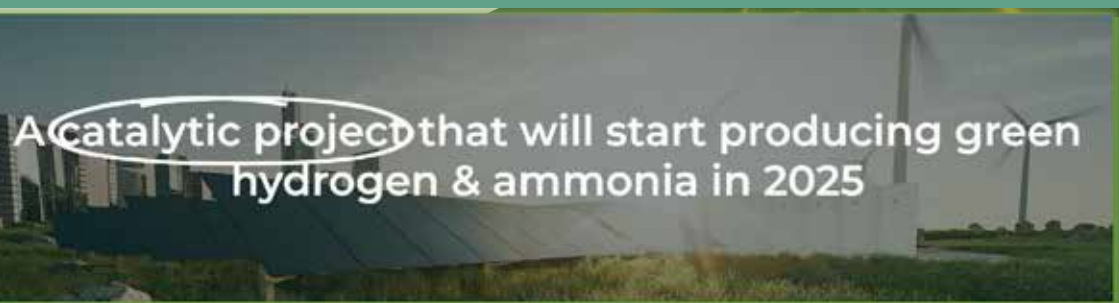
Targeted sectors

Primary: Green economy and Bioeconomy

Secondary: Includes cross cutting sectors through value adding i.e. manufacturing, trade and energy sectors.

Contact Details:

Quiver Green Group (Pty) Ltd.
Contact Person: P. du Toit
Designation: Managing Director
Mobile: 078 600 5156
Email: polycarpd@gmail.com



A catalytic project that will start producing green hydrogen & ammonia in 2025

Description of the project

- The first phase of the project involves producing more than 77 000 tonnes of green ammonia per year, with a green hydrogen content of approximately 13 800 tonnes per year from 2026.
- The project makes use of renewable energy sources including 180MWp solar, fixed-tilt and single-axis tracking, 130MWp of wind and 110MWh of battery storage.
- Construction of the ammonia production facility will begin in 2023 and will include a 140MW electrolyser and 300 mtpd Ammonia Synthesis, which will be operational in 2026.
- The project intends to incorporate next-generation technology that is more affordable and more efficient, hence unlocking additional economies of scale that will make the selling price competitive when compared to grey ammonia/hydrogen.

Contribution to GDP	
<p>R82 billion to the GDP,</p> 	<p>Green Ammonia Exports will result in an more than \$10,5bn contribution to BSA's Balance of Payments.</p> 
Industrialisation	
<p>Black & female industrialists within the manufacturing space will be developed as a result of the project.</p> 	<p>Local content procurement Support localisation and procurement of local solar PV components for up to 500MWp Solar PV and 1 500MW Wind Plant components.</p> 

Contributing to South Africa's green economy



Main Project Contacts

Organisation/Entity: Prieska Power Reserve / CENEC
Contact Person: Cobus Vermeulen
Designation: Director
Tel: 082 444 2219
Email Address: cobus@cenec.com

Targeted sectors

- Project focuses on the following sector/s: Renewable Energy; Hydrogen Fuel and Ammonia Fertilizer

Investment value

- The total value of the project: R 10.7 billion

Number of Jobs to be created

- Permanent employees 300 post construction.
- Supported by 25 Young Professionals and 75 Artisans.



Small Business Development

It is expected that a total of **300** new small businesses will be developed majority being black-owned.



Job Creation

Job years are expected.

Skills Development

Opportunity for both skilled and non-skilled labourers.



The main impact of the project is expected to be directed towards women & youth.



Upskilling of **16 500** people is expected over 30 years.



- The Project has ample land with an abundance of complementary solar and wind resources that are ideal for the low-cost production of ammonia;
- Prieska offers excellent linkages to the road, rail and port infrastructure
- Various governments in easy to access potential project markets are implementing policies to promote an enabling environment for the uptake of green hydrogen and ammonia.
- Prieska with an abundance of solar and wind resources, can benefit from this expected growth in the green hydrogen and ammonia.
- The Project will contribute substantially to South Africa's Hydrogen Strategy by capitalizing on abundant renewable resources in South Africa to deliver technologies for hydrogen production linked to renewable energy, storage and distribution.



Orion Minerals

Project Description

The mine concluded a positive Bankable Feasibility Study in May 2020 and is currently in the late financing stage - early Construction Stage in anticipation of receiving the remainder of the requisite funding.

In order to adapt to the current local and global economic challenges, PCZM instituted a number of financial and technical studies to consider the viability of a number of accelerating early cashflow scenarios which resulted in the current plan to start the operation on a smaller scale and ramp-up to the final development scenario outlined in the BFS-20.

Work has begun and the project remains positive. Work with the local mine community and pro-active up-skilling programmes continue, working towards local provision of many of the required skills.

Partnerships

The PCZM Project falls under the auspices of Orion Mineral Limited which is dual listed on both the Johannesburg Stock Exchange(JSE) and the Australian Stock Exchange (ASX) allowing for equity participation by the peoples of South Africa.

In addition to the BBEEE partnerships, the Project has also procured funding from the Industrial Development Corporation of South Africa Ltd (IDC) as well as from TFR&P; Canada Ltd and Triple Flag Ltd (together, Triple Flag).

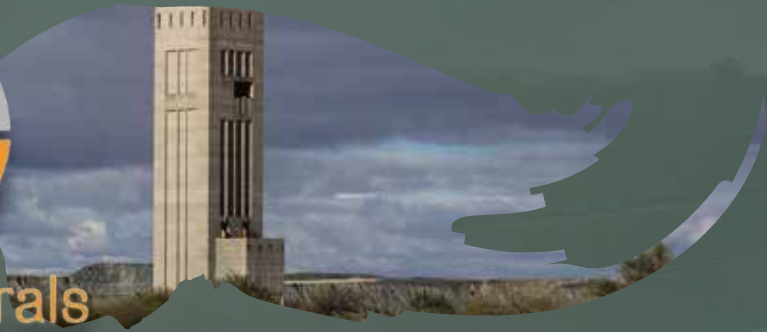


Main Project Contacts

www.orionminerals.com.au
Name: Errol Smart Position: Orion CEO
Name: Peet Coller Position: Orion COO
Email Address: info@orionminerals.com.au



Orion Minerals



Investment value

The total value of the project: As of end July 2022, R623 million has been spent on the project. The R4.1 billion announced to construct the mine will be in addition to this investment.

Exploration and development to mine copper and zinc
By products include gold and silver, pyrite and barite

Number of Jobs to be created

A total number of jobs to be created (direct and indirect/construction phase). Initially around 100 jobs are anticipated scaling up to greater than 1,500 employees and contractors during construction; with a steady state employment estimate of 840. This excludes new jobs created for service provision to the mine and its employees.



MAINTENANCE, REPAIR AND OVERHAULING

**MRO planned for
Upington Airport.**



An investor has identified a need to develop an MRO in South Africa and the viable location for it is Upington due to its arid climate, long airport runway (5km) and other factors. MRO stands for maintenance, repair and overhauling. The establishment of an Industrial Park in Upington is also a critical factor which could lead to the success of this project as it offers lucrative incentives and other enabling factors.

The investor intends to develop an aviation park to accommodate maintenance, repairs and overhaul of aircraft and research and development. These activities will also include airline storage, dismantling, scrapping, painting and internal refurbishment.



Targeted sector

Aeronautics

Investment value

The total value that is required for the project is R800-million.

Job creation

A total of 400 jobs will be created by this project.

Project financed by

The project will be financed by the private sector with the government providing enabling infrastructure.

Project status

The business case and feasibility studies have been completed.

Partnerships

The Northern Cape Economic Development, Trade and Investment Promotion Agency (NCEDA) is the project leader. Partnerships are envisaged with the private sector, provincial government, local government and state-owned enterprises.

CONTACTS: UPINGTON

Upington Industrial Park, NCEDA

Contact person: Mr Hendrik Louw

Tel: +27 87 086 0365

Mobile: +27 60 997 7222

Email: houw416@gmail.com

NAMAKWA IRRIGATION DEVELOPMENT PROJECT



PROJECT DESCRIPTION

The scope of this project will be to develop approximately 3 200ha of high-potential arable land in the Namakwa District. This arable land is located in 11 distinct areas. Each of these have been described, planned and costed individually. Onseepkans has been identified as the pilot to this larger project and the bulk water system is being constructed. Of the identified land, 2 000ha has existing water licences. A further 1 200ha will have to be secured. The basket of products to be produced varies from cash crops such as lucerne and grains, but the bulk of the development is aimed at high-value crops with export potential in order to secure significant growth on the required investment.

This development (11 projects) will generate R521-million per annum in value of production when in full production. This will have an economic impact on various levels of the economy. It will lead to an increase in the Gross Domestic Product (GDP) of the Namakwa District. Additional value will be added through inputs such as machinery and equipment, chemicals, packing material, fuel, electricity, water, etc. This development would add an additional R200-million to the Namakwa economy on a direct level. Adding the indirect and induced levels, the impact on GDP exceeds R272-million per annum for the entire economy.

PARTNERSHIPS

- Department of Agriculture, Land Reform and Rural Development (National)
- Department of Agriculture, Land Reform and Rural Development (Provincial)
- IDC
- Khai-Ma Local Municipality

INVESTMENT VALUE

The investment value across the 11 localities where this project will be located is around R1.7-billion.

NUMBER OF JOBS TO BE CREATED

The impact on employment due to the proposed development is estimated at 3 447 on a direct level, which will include 133 skilled and 1 772 semi-skilled positions. Most of this direct employment will be at the place of production. With the indirect and induced levels added, the impact on employment increases to more than 3 945 for the entire economy.

RESPONSIBLE INSTITUTION

Northern Cape Department of Agriculture

Contact person: Dr PS Kegakilwe, Chief Director

Tel: 053 838 9110 | **Mobile:** 083 554 5583

Email: pkegakilwe@ncpg.gov.za and cc pkegakilwe@yahoo.com



BIG HOLE PRECINCT

Kimberley Frances Baard District



PROJECT BACKGROUND

In recent years, the Big Hole Precinct (BHP) has been identified by the Northern Cape Province as a priority tourism development zone. Recent developments in the BHP have caused a significant increase in visitor figures to the area, which in turn generates the need for further development.

Development in the vicinity began in 2005 with the comprehensive revamp of the Big Hole Museum to the value of R50-million by the De Beers Consolidated Diamond Mining Company, making it one of the best open-air museums by global comparison.

In 2012, the Mittah Seperepere International Convention Centre (MSICC) was officially launched in the Big Hole Precinct. As one of the newest convention centres in the country, the facility boasts a plenary capacity of 2 500 seats in addition to an open-air arena which also accommodates 2 500 delegates at capacity. In addition, the four-star Protea Hotel Kimberley was also built in close proximity, a facility that is being expanded at present due to increased demand for luxury rooms.

Furthermore, the Big Hole Caravan Park, formerly known as the Open Mine Municipal Caravan Park, is also located within the Big Hole Precinct adjacent to the MSICC. The park facilities comprise tent and caravan stands with 46 grassed sites with power stands, as well as modern ablution facilities with hot water, laundry and scullery facilities. The site is currently managed by the Sol Plaatje Local Municipality.

TARGETED SECTORS

- Real estate
- Construction

DESCRIPTION OF THE PROJECT

Further development of the Big Hole Precinct in Kimberley to create design and attraction synergy between the Big Hole Museum, Protea Hotel Kimberley, Mittah Seperepere International Convention Centre, Kumba Skate Plaza and Frances Baard Flagship Visitor Centre.

PROJECT FINANCE

- Property Developers
- Private Investors

PROJECT STATUS

Construction is complete and the project is in operations phase. Precinct development and expansion is the next phase.

GOVERNMENT SUPPORT AND INCENTIVES

It is envisaged that the project will be financed by an investor while the government will ensure enabling infrastructure and various incentives as part of the project support.

PARTNERSHIPS

- Northern Cape Department of Public Works
- Northern Cape Department of Economic Development and Tourism
- Northern Cape Economic Development Agency
- Sol Plaatje Municipality

CONTACTS

Mr Riaan Warie: Manager: Trade and Investment
Northern Cape Department of Economic
Development and Tourism
Tel: +27 53 839 4000 | Email: RWarie@ncpg.gov.za

MAYIBUYE PRECINCT



PROJECT LOCATION

Galeshewe, Frances Baard District



PROJECT BACKGROUND

The Mayibuye Precinct was selected as it has great potential to be developed as a tourism attraction in the area. The Mayibuye Precinct has many of the characteristics of a successful tourism precinct such as the clustering of several tourist attractions, it offers several tourism services and activities and gives tourists several reasons for visiting. It also allows for tourists and residents to interact.

Some of the key attractions in the Mayibuye Precinct include:

- Mayibuye Uprising Memorial in remembrance of the innocent victims who lost their lives during the Mayibuye Uprising
- Robert Sobukwe's office where he practiced law
- Aids Memorial in honour of all those who lost their lives to Aids
- Beer Hall site where the Mayibuye Uprising started
- Abantu Batho Hall where Sol Plaatje gave his last public lecture in 1932
- First barber shop in Galeshewe

TARGETED SECTORS

- Infrastructure
- Real Estate
- Construction

DESCRIPTION OF THE PROJECT

The project will entail the following elements:

- Interpretation Centre (new style of museum) showcasing local history and culture and celebrating icons such as Robert Sobukwe and Kgoshi Galeshewe
- Redevelopment of the Mayibuye Square as a major tourist magnet for Galeshewe
- Restoration of Robert Sobukwe's office to preserve and exhibit the life and the role he played in the liberation struggle
- Development of the Entrance Arch to activate the precinct, giving it a sense of place
- Development of the Heroes Garden as a place of honour, reflection and especially remembrance of the fallen heroes and heroines of Galeshewe
- Public library and resource centre, incorporating modern technology and resources
- Arts and craft centre. Workshop facilities that will enable local artists to create their crafts
- Parking area. Safe and secure parking facilities

PARTNERSHIPS

- Northern Cape Department of Public Works
- Northern Cape Department of Economic Development and Tourism
- Northern Cape Economic Development Agency
- Sol Plaatje Municipality

CONTACTS

Ms Jean Wilson: Chief Director Tourism

Northern Cape Department of Economic Development and Tourism

Tel: 053 839 4000 | Email: jwilson@ncpg.gov.za

Mr Johann van Schalkwyk: Director: Tourism Development

Northern Cape Department of Economic Development and Tourism

Tel: 053 839 4000 | Email: jvs.dtec@gmail.com

A photograph showing two people in orange kayaks on a river. They are wearing helmets and life jackets. The kayaker in the foreground is using a paddle. The water is dark and reflects the surrounding environment. The background shows a rocky shoreline with some vegetation.

EXPLORE THE ROUTES OF THE NORTHERN CAPE

Opportunities abound for tourism investors in the Northern Cape. The development of a wide range of tourist routes, with accompanying infrastructure, illustrates the province's commitment to welcoming investors in this growing sector.

The Battlefields Route

The Battlefields Route allows visitors to relive the war between Great Britain and the Boer Republics of the Transvaal and the Orange Free State from 1899 to 1902. The Northern Cape played a decisive role in the war and the famous Kimberley siege is depicted at the Magersfontein and McGregor Museums.

Cape Namibia Route

The route meanders away from Cape Town along the N7 and includes small towns, each with its own local flavour and a story to tell. Visitors will encounter towns which capture the Nama heritage of the province. Appreciate the unique stories of the people of Garies, Kamieskroon, Springbok, Okiep, Steinkopf and Vioolsdrift. During spring time, this route takes in the core of the kaleidoscope that is the Namakwa floral season. River-rafting along the mighty Orange River is a popular pursuit.

Namaqua Coastal Route

The route includes hidden gems like Garies, Kamieskroon, Hondeklip Bay, Koiingnaas and Kleinsee. Dozens of adventure and leisure options are available: Namaqua National Park, nature reserves, some of the most remote hiking and 4x4 trails imaginable. Go succulent sleuthing with a botanical guide, hike the Springbok Klipkoppie for a dose of Anglo-Boer War history, explore the countless shipwrecks along the coastline. Breathtaking scenes of the Atlantic Ocean with sightings of dolphins and whales combined with great vistas of mountains and veld make travelling in this area remarkable.

Richtersveld Route

The Richtersveld is South Africa's only mountain desert and the route travels along rugged gravel roads to quaint towns such as Eksteensfontein, Sendelingsdrift, Lekkering, Kuboes and Sandrift. The Orange River presents a more leisurely pace with river-rafting and the best wilderness fly-fishing in South Africa, while the entire Richtersveld is a mountain biker's dream. Learn about the lives of the nomads, be transported through dancing and storytelling.

Quiver Tree Route

Named after the indigenous quiver tree, the Quiver Tree Route stretches along the mighty Orange River. The Augrabies Falls in the Augrabies National Park is the world's sixth-largest waterfall. The route will appeal greatly to families, adventure and adrenaline seekers. Experience the hot springs at Riemvasmaak, river-rafting, fly-fishing, kayaking, river cruises, 4x4, hiking and MTB trails and excellent bird-watching. Experience the longest wine-producing area in the Southern Hemisphere.

Kalahari Red Dune Route

Discover the essence of the province in the heart of the Kalahari with golden dunes, wide-open skies and flat-topped acacia trees. Enjoy dune hikes at dawn, eagle-owl encounters, sand-duning and surfing in the red sand and close encounters with meerkats. Explore the Khomani San Cultural Landscape and join a guided walk with the San Khomani to rediscover the wisdom, customs and folklore of this ancient tribe. The Kgalagadi Transfrontier Park is the largest conservation area in Africa and one of only 10 Dark Skies sanctuaries in the world.

Go Ghaap Route

Explore famous archaeological sites, historic towns, amazing architecture and nature and game reserves.



Visitors can trace the early geological history which created vast mineral wealth like iron, manganese, diamonds and limestone. Follow in the footsteps of the early explorers like David Livingstone and Richard Moffat. Relive the Anglo-Tswana and Anglo-Boer Wars, explore the Wonderwerk Caves between Kuruman and Danielskuil. Rediscover the Khoisan history in Wildebeest Kuil near Barkly West and marvel at the Kuruman Eye, a natural spring.

Karoo Oasis Route

The route traverses the towns of Warrenton, Kimberley, Hopetown, Britstown and Victoria West along the N12. It is the perfect stopover for travellers between Johannesburg and Cape Town. Trace a rich mining history before stopping at one of the myriad reserves for game drives and world-class birding. Anglo-Boer War enthusiasts can relive the tribulations of war at the McGregor and Magersfontein Museums and at Hopetown. Hanover has South Africa's largest privately-owned Karoo nature reserve, the Karoo Gariep Nature Reserve. Olive Schreiner's house is a museum.



Karoo Highlands Route

Enjoy the peace and tranquility of the Karoo with its wide-open plains. The area was named by the Khoi and San people, who left their legacy as art on the rocks. Explore many unique experiences such as dinosaur hunting in Richmond, the SKA radio telescopes in Carnarvon, the SALT optical telescope in Sutherland, Karoo architecture and corbelled houses, Anglo-Boer War sites, rock art, ancient Palaeo Surfaces, farm stays and great Karoo cuisine and hospitality. Nieuwoudtville is your last stop before crossing the majestic Van Rhyns Pass en route to Cape Town.

Investment opportunities

General opportunities for investors in the tourism sector include:

- nature and game reserves
- adventure tourism
- upgrading of accommodation facilities
- new attractions and entertainment features (theme parks)
- improvement of air transport networks.

Adventure sports at Kimberley: The possible establishment of an adventure sports resort in the Big Hole Precinct, Kimberley.

Steam train: Reviving steam train tourism could be done along a variety of routes including routes out of Kimberley to Belmont and from De Aar to Victoria West. "Gems on Track" is the working title.

Eco-resort at Boesmansput: Development of a diver-training facility would form part of the plan at this popular fresh-water cave diving site. An eco-lodge is envisaged and a conference facility.

Wildebeest Rock Art Centre: More than 400 pieces of rock art would form the cornerstone (together with the nearby Nooitgedacht Glacial Paving) of a world-class heritage and archaeological site. Developments would include the creation of a performance arena (for the depiction of San Bushman culture) and facilities for game viewing and photographic safaris.

Contact:

Email:

marketing@experincenortherncape.com

Website:

www.experincenortherncape.com



AIRPORT INVESTMENT OPPORTUNITIES

Upington International Airport



PROJECT LOCATION: Upington

District: ZF Mgcawu District Municipality

PROJECT BACKGROUND

There is an opportunity for Airports Company South Africa (ACSA) to develop an Aviation Park at Upington International Airport. The development can accommodate aircraft maintenance, repair and overhauling (MRO) facilities as well as services such as aircraft storage, end-of-lease refurbishment or scrapping, parts distribution and cargo development.

The climate and space for aircraft storage, the viability for green (solar) energy and a greenfield site to construct a state-of-the-art facility make Upington International Airport a favourable location for an MRO facility.

TARGETED SECTORS

- Infrastructure
- Real Estate
- Construction
- Renewable Energy

DESCRIPTION OF THE PROJECT

Upington International Airport's 4.9km runway allows it to land the largest aircraft. Airports Company South Africa is a partner in the application to run the Upington Industrial Park (UIP) and has allocated 55ha for the creation of an Aviation Park to store and maintain aircraft and a further 30ha for commercial development. The planned storage facility could also support a variety of related sectors such as modification and demolition, parts manufacturing and warehousing and ground support equipment (GSE) repair.



PROJECT ELEMENTS

- Parking and storage of aircraft: includes the parking and stripping of aircraft and the recycling of spare parts for maintenance purposes
- Cargo hub: increase of cargo facility for important export purposes including truck stop
- Car rental facilities: providing improved facilities for car rental companies
- Electronics hub
- Solar farm project

PROJECT FINANCE

- Public Private Partnership
- Equity Partners/Investors
- Property Developers

PROJECT STATUS

A feasibility study was concluded which indicated that the projects present a viable business opportunity for ACSA and the local community. The study indicated that the development could be very lucrative.

GOVERNMENT SUPPORT AND INCENTIVES PARTNERSHIPS

- ACSA
- Industrial Development Corporation (IDC)

VICTORIA WEST

REHABILITATION AND DEVELOPMENT OF VICTORIA WEST AERODROME

PROJECT LOCATION

Victoria West, Ubuntu Municipality

PROJECT BACKGROUND

The Victoria West Aerodrome is strategically situated between the N12, N1 and R63. It was the fuelling aerodrome for flights from London to Cape Town in the 1950s and has significant historical value.

TARGETED SECTORS

- Agriculture
- Drone facilities and flying school
- Export through aviation
- Aviation
- Logistics and distribution
- Car rental

DESCRIPTION OF THE PROJECT

Rehabilitation and development of existing Aerodrome to service businesses, tourism and projects within a 300km radius of Victoria West. Develop the Aerodrome with a fire station to service the Aerodrome and the local municipality.

JOBS

Short term: 200+ construction phase

Long term: 300 permanent jobs

INVESTMENT VALUE

Immediate: R10-million

Short/medium term: R55-million

Long term: R25-million

Total: R100-million

PROJECT FINANCE

Grant funding is required for the terminal building and runways. Equity funding is required for the warehousing and logistics buildings, hangars and flying school facilities.

PROJECT STATUS

A 22-year lease agreement has been signed with the Ubuntu Municipality. All suspensive conditions have been met.

PARTNERSHIPS

The Rural Aerodrome Company (Pty) Ltd will investigate all partnerships.

SPRINGBOK AIRPORT

PROJECT LOCATION: Springbok, Namakwa

NUMBER OF JOBS TO BE CREATED

150 direct jobs and 350 indirect jobs

INVESTMENT VALUE

R58.8-million

TARGETED SECTORS

- Infrastructure
- Real Estate
- Construction

DESCRIPTION OF THE PROJECT

An airfield already exists in Springbok. The project envisages the construction of a new terminal building which will include accommodation for restaurants, car rental companies, commercial banks and kiosks.

PROJECT FINANCE

- Public Private Partnership
- Equity Partners/Investors
- Property Developers



CONTACTS: UPINGTON

ACSA

Mr Riaaz Essack: Acting Group Manager:

Infrastructure & Asset Management

Mr Mark Maclean: Regional General

Manager Cluster

CONTACTS: VICTORIA WEST

Caroline Ungersbock

CEO, Sustainable Tourism

Partnership Programme

Tel: 082 880 6250

Email: caro@caroskaroo.co.za

CONTACTS: SPRINGBOK

Mr Johann van Schalkwyk: Director: Tourism
Development Northern Cape Department of
Economic Development and Tourism

Tel: 053 839 4000

Email: jvs.dtec@gmail.com

THE NORTHERN CAPE YOUR COMPETITIVE BUSINESS TOURISM DESTINATION IN SOUTHERN AFRICA



**THE NORTHERN CAPE TOURISM AUTHORITY
PROVIDES A COMPLETE RANGE OF EVENT-SUPPORT SERVICES.**

Discover the Northern Cape, a burgeoning business events hub nestled in the heart of Southern Africa. As the largest province in South Africa, the Northern Cape blends modernity with a rich tapestry of culture, history and breathtaking landscapes. It stands as an extraordinary destination, not only for its dynamic business environment but also for the unparalleled experiences it offers.

Setting the stage for global business events

The Northern Cape boasts proven capacity and world-class infrastructure, making it a prime choice for major international business events and meetings. Our diversity extends beyond warm hospitality and rich culture – it's reflected in our ability to deliver a dynamic, flexible and a value-for-money experience. The Northern Cape Tourism Authority serves as your "one-stop solution", offering impartial advice and comprehensive assistance for hosting business events in the province.

Conferences and meetings amid natural splendour

Superior venues are strategically positioned throughout the province, accessible via major highways and centrally located airports in Kimberley and Upington. The Mittah Seperepere International Convention Centre in Kimberley stands as a testament to our commitment to excellence, accommodating up to 1 000 delegates. Moreover, our hotels provide versatile and fully equipped meeting spaces, ranging from 600 guests in Kimberley to 250 in Upington and 200 in Springbok.

Incentives that leave a lasting impression

Reward your incentive groups with experiences that transcend the ordinary. The Northern Cape offers a unique blend of natural beauty, diverse cultures, award-winning food and wine, luxury accommodation and unforgettable wildlife encounters. Our efficient infrastructure ensures seamless programmes, making the Northern Cape an unparalleled choice for incentive and meetings programmes.

Full-spectrum event support

The Northern Cape Tourism Authority provides a complete range of event-support services, ensuring your



event is not only successful but also memorable. As local experts, we collaborate with hand-picked suppliers to offer innovative and professional services tailored to your needs.

Our services:

- Bid support for national and international events/conferences/meetings
- Current databases of Northern Cape products
- Negotiating rates with hotels, tour operators, etc
- Airport welcome and departure desk
- Delegate boosting, hosting and site visits
- Pre and post tours and accompanied person's programme
- Assistance with local logistical arrangements

Embark on a transformative business journey in the Northern Cape.

Contact us at:

marketing@experiencenortherncape.com

to unlock a world of possibilities for your next business event.

NATIONAL INCENTIVE SCHEMES

The national Development of Trade, Industry and Competition (the dtic), in collaboration with other public and private sector entities, has developed a number incentives schemes to assist with the growth of certain sectors. These national incentives schemes are listed below.

INNOVATION CLUSTER

PROGRAMME	INCENTIVES
<ul style="list-style-type: none"> Technology and Human Resources for Industry Programme (THRIP) 	<ul style="list-style-type: none"> A 50% to 90% cost-sharing grant to maximum R8-million per annum for three years for approved project engaged in applied research and development in science, engineering and technology.
<ul style="list-style-type: none"> Support Programme for Industrial Innovation (SPII) 	<ul style="list-style-type: none"> Matching scheme that provides financial assistance in the form of a non-taxable grant for qualifying costs incurred in development activity associated with a specific project to a maximum of R5-million.

SERVICES INVESTMENT CLUSTER

<ul style="list-style-type: none"> Global Business Services (GBS) Incentive 	<ul style="list-style-type: none"> Reimbursable cost-sharing grant of 30% to 50%, maximum of R20-million for qualifying costs. Score based on economic benefit criteria.
<ul style="list-style-type: none"> Film and TV Production 	<ul style="list-style-type: none"> For productions with various QSAPE amounts, various percentage and calendar days requirements may be waived and such discretion will take into account the budgetary implications of the decision made.

EXPORT CLUSTER

<ul style="list-style-type: none"> Export Marketing Investment Assistance (EMIA) 	<ul style="list-style-type: none"> Return airfares, subsistence allowances, the cost of sample transportation and various other costs may be covered in respect of costs related to marketing, missions and trade fairs.
<ul style="list-style-type: none"> Sector Specific Assistance Scheme (SSAS) 	<ul style="list-style-type: none"> Project Funding. A reimbursable 80:20 cost-sharing grant scheme. Emerging Exporters. 100% of the cost to a maximum of R1.9-million per project.
<ul style="list-style-type: none"> Capital Projects Feasibility Programme (CPFP) 	<ul style="list-style-type: none"> Reimbursable contribution up to a maximum of R8-million.

MANUFACTURING INVESTMENT CLUSTER

PROGRAMME	INCENTIVES
<ul style="list-style-type: none"> Black Industrialists Scheme (BIS) 	<ul style="list-style-type: none"> A 30% to 50% cost-sharing grant of up to R50-million. Offers support on a cost-sharing basis towards capital investment costs, feasibility studies, post-investment support and business development services (to the maximum of R2-million).
<ul style="list-style-type: none"> Aquaculture Development and Enhancement Programme (ADEP) 	<ul style="list-style-type: none"> Reimbursable cost-sharing grant of 30% to 50%, maximum of R20-million.
<ul style="list-style-type: none"> Strategic Partnerships Programme (SPP) 	<ul style="list-style-type: none"> A maximum of R15-million per financial year on a 50:50 basis.
<ul style="list-style-type: none"> Agro-Processing Support Scheme (APSS) 	<ul style="list-style-type: none"> Reimbursable cost-sharing grant of 20% to 30% to a maximum of R20-million.
<ul style="list-style-type: none"> Automotive Investment Scheme (AIS) 	<ul style="list-style-type: none"> Non-taxable cash grant of <ul style="list-style-type: none"> 20% of the value for light motor vehicle manufactures and 25% of the value of qualifying investment in component manufactures and tooling companies.

INFRASTRUCTURE INVESTMENT CLUSTER

<ul style="list-style-type: none"> Special Economic Zone Fund (SEZ) 	<ul style="list-style-type: none"> Preferential taxes (including 12i Tax Allowance) Bulk infrastructure (electrical sub-stations, water storage, sewerage treatment and pumping, etc) Top structures Business development (pre-feasibility studies and feasibility studies, technology testing and training, EIA and general research linked to planned investment and clusters)
<ul style="list-style-type: none"> Critical Infrastructure Programme (CIP) 	<ul style="list-style-type: none"> Registered private entities and local governments (municipalities, excluding metropolitan municipalities).Types of supported projects, capped at R50-million: <ul style="list-style-type: none"> strategic infrastructure feasibility studies generic investment South African film and TV studios and cinemas state-owned testing facilities state-owned industrial parks distressed municipalities or investors in such municipalities



Access to international markets

South Africa has signed multiple free trade and bilateral agreements: see www.thedtic.gov.za for more information.

Economic Partnership Agreements

The African Continental Free Trade Area (AfCFTA)
Southern African Development Community (SADC) FTA
Trade, Development and Cooperation Agreement (TDCA)
EFTA-SACU Free Trade Agreement (FTA)
Economic Partnership Agreement

Preferential Trade Agreements

SACU-Southern Common Market (Mercosur) PTA
Zimbabwe/South Africa bilateral trade agreement

Non-Reciprocal Trade Arrangements

Generalised System of Preferences (GSP)
African Growth and Opportunity Act (AGOA)



economic development and tourism

Department of Economic
Development and Tourism
NORTHERN CAPE
REPUBLIC OF SOUTH AFRICA

Northern Cape Department of Economic Development and Tourism
Metlife Towers, 13th Floor, Cnr Stead and Knight Streets, Kimberley, 8309
Tel: +27 53 839 4000 | **Contact:** Head of Department Mr T. Mabija
Email: TMabija@ncpg.gov.za | **Website:** www.economic.ncape.gov.za

Northern Cape Economic Development and Investment Promotion Agency
DSC Building, First Floor, 69 Memorial Road, Kimberley, 8301
Tel: +27 53 833 1503 | **Contact:** Acting CEO Mr Hendrik Louw
Email: hlow@nceda.co.za | **Website:** www.nceda.co.za