

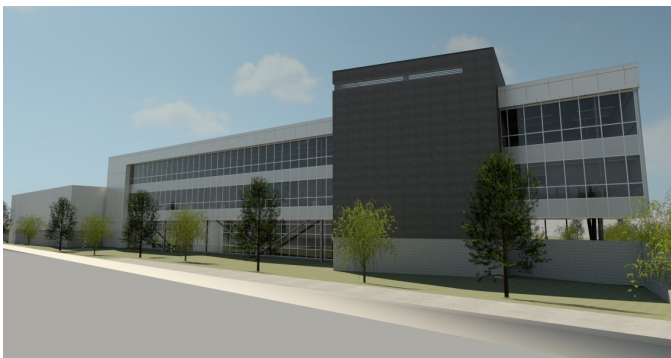


Congratulations...

2018 Industry Award Winner

Best Estimate

Atlanta Gas Light - Regional Business Office



ADE Construction Consultants was retained by the design architect to provide independent construction cost management during the design processes of this new business center. Services then began with early schematic design level and continued to the final construction document level.

This unique project began with an estimated budget of \$4,500,000 and consisted solely of a 20,000 square foot facility and a small warehouse. By the end of the schematic design, the client re-evaluated needs of the facility; and the original office facility doubled in size,

the warehouse was expanded, a lighted truck canopy in the rear area of the site was added, and a large parking area for future expansion was included.

The redesigned facility included a two story, 43,000 square foot office space, warehouse facility of 10,000 square feet, fleet building of 2,400 square feet, and a lighted truck canopy of 10,700 square feet. The site included 8.5 acres for parking and truck areas designed for large turning areas. As in most sites, retention areas were required with water quality control structures in place. Other site improvements included outdoor courtyards, seating areas, and landscaping with numerous accent trees. The exterior skin of the project included brick veneer, metal mesh screens, and composite metal panels. This was easily accomplished with a structural steel frame with concrete slabs. An outdoor garden on the roof was a late addition.

Working closely with the owner and architect, ADE delivered this project with a Variance of 0.99% of the revised budget of \$15,500,000.

Company Name: ADE Construction Consultants, Inc.

Submitted by: Dan Egle, CPE (danergle@bellsouth.net)
Southeast Region - Atlanta - Chapter 14