

Case Examples – Transference and Verification Example Data

A candidate reference interval for a given analyte is selected.

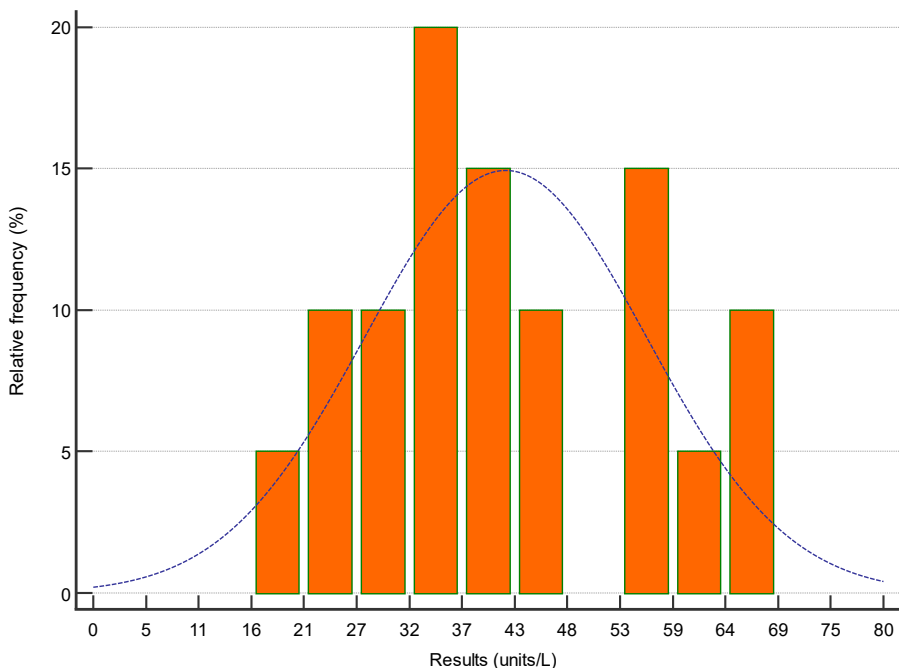
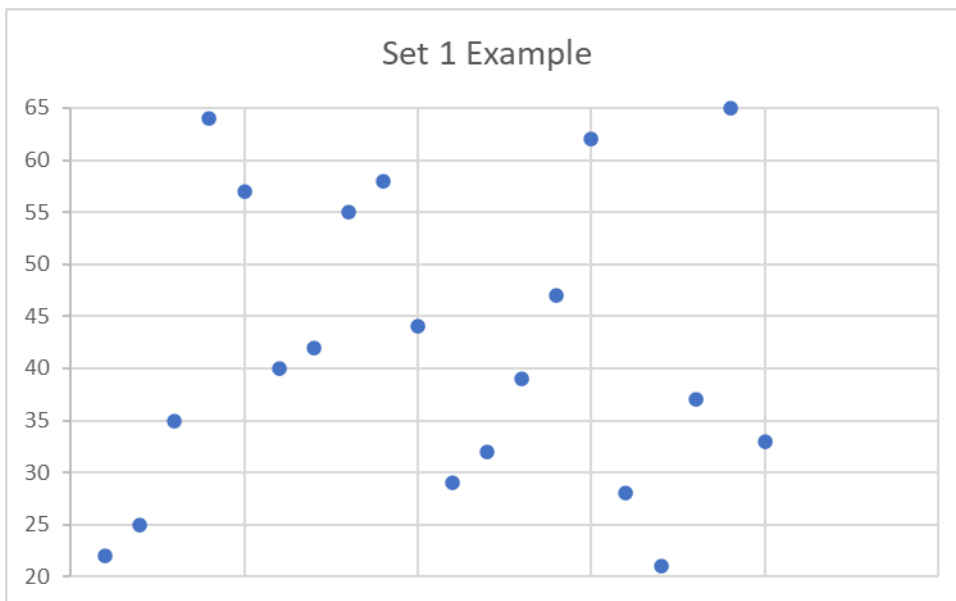
Proposed reference interval = 20-65 units/L.

Two examples of data sets and histograms are provided with interpretation.

Set One (Raw Data)

Reference Sample	Result (units/L)
1	22
2	25
3	35
4	64
5	57
6	40
7	42
8	55
9	58
10	44
11	29
12	32
13	39
14	47
15	62
16	28
17	21
18	37
19	65
20	33

A scatterplot with reference intervals inserted can illustrate that values are spread across the pRI and how many values, if any, fall outside of the pRI. Scatterplots are acceptable but not recommended by the guidelines.



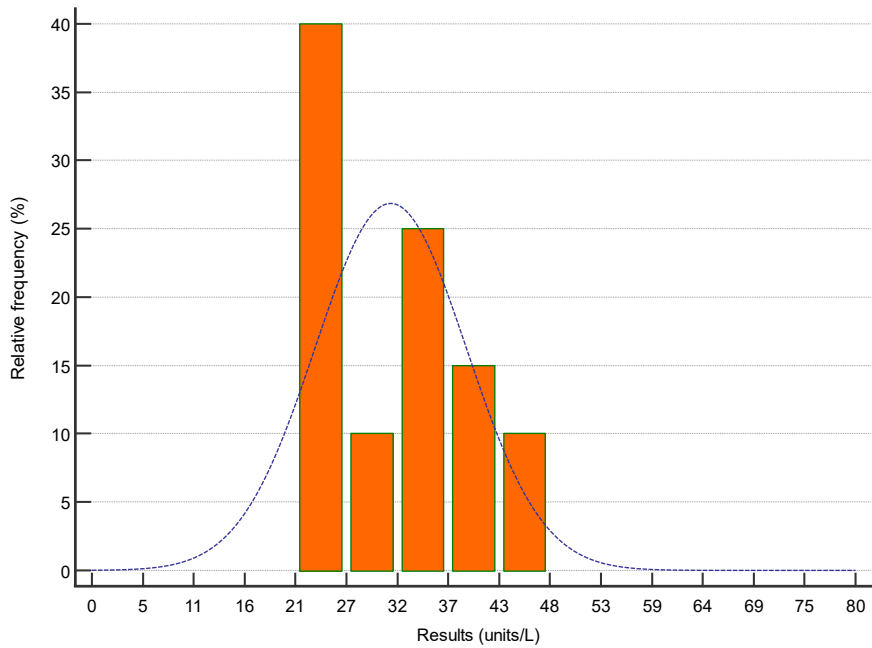
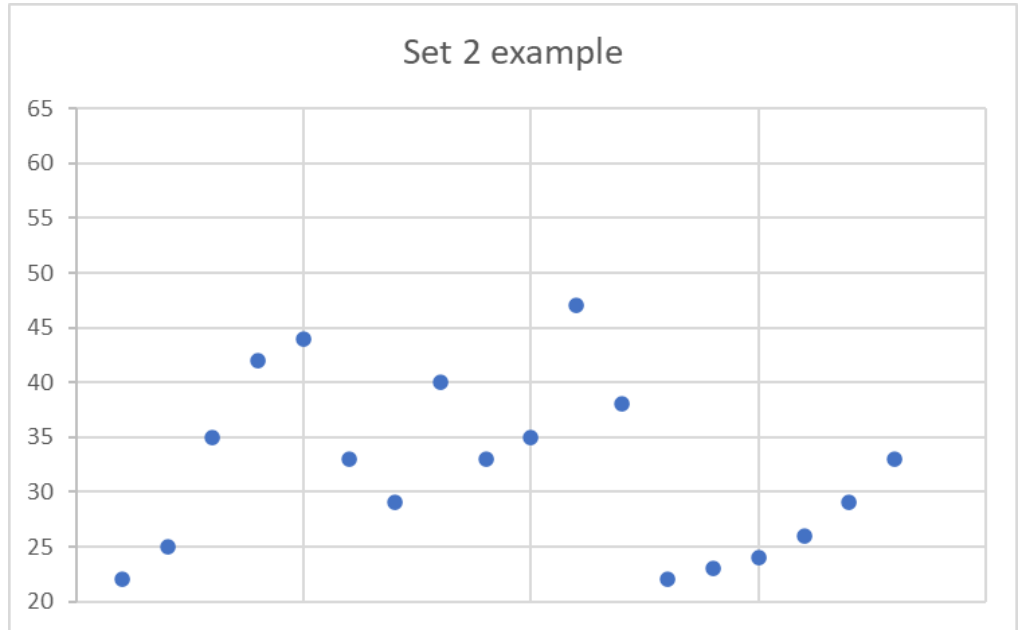
Histogram of Dataset 1 which shows the frequency of the values and the distribution in comparison to a dotted line of normal distribution.

This dataset fills the range of the candidate reference interval, as expected for a representative set of reference results.

Set Two (Raw Data):

Reference Sample	Result (units/L)
1	22
2	25
3	35
4	42
5	44
6	33
7	29
8	40
9	33
10	35
11	47
12	38
13	22
14	23
15	24
16	26
17	29
18	33
19	24
20	22

A scatterplot with reference intervals inserted can illustrate that values are spread across the pRI and how many values, if any, fall outside of the pRI. Scatterplots are acceptable but not recommended by the guidelines.



Histogram of Dataset 1 which shows the frequency of the values and the distribution in comparison to a dotted line of normal distribution.

This dataset does not fill the range of the candidate reference interval and is skewed to one side of the proposed RI.

