



2021

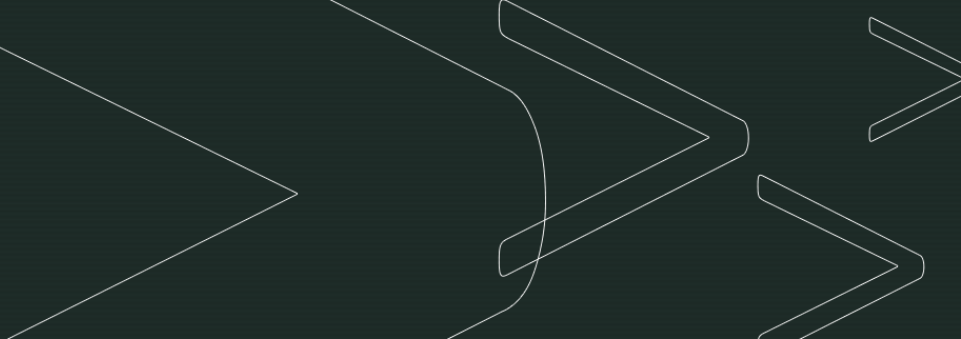
# Cybersecurity for Treasury Professionals

## About Me





# Agenda

- Current events
  - Cyber security tips/tricks
  - Corporate security overview
  - Working with your security team
- 

# Current Events





# Supply Chain Security

COVID-19  
Related  
Fraud





**YOUR FILES ARE ENCRYPTED**

Your photos, documents and other important files have been encrypted with unique key, generated for this computer.

**NEXT**

# Ransomware Infections





TLDR

# Personal Cyber Security Tips



# ';--have i been pwned?

Check if you have an account that has been compromised in a data breach

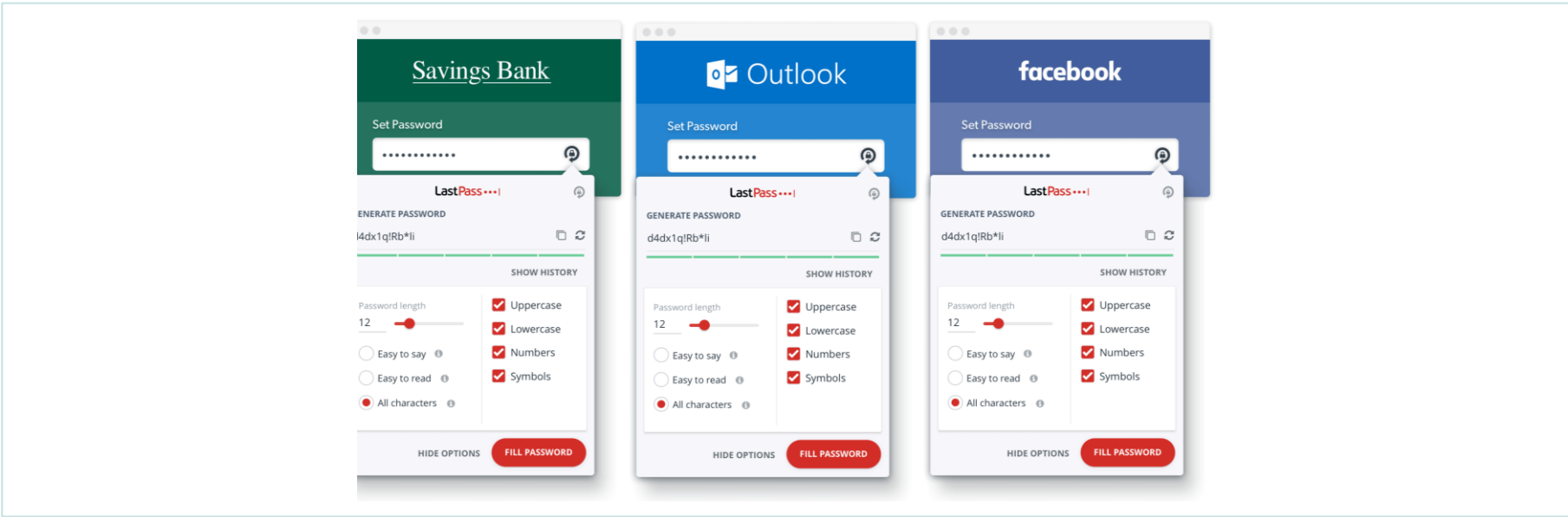
pwned?



Generate secure, unique passwords for every account

[Learn more at 1Password.com](https://1password.com)

## Data Breach Detection



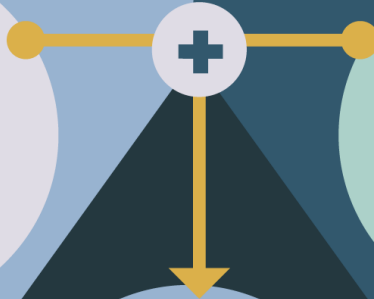
# Password Vault



# Credit & Identity Monitoring

[ PASSWORD ]

[ MULTIFACTOR AUTHENTICATION ]



[ LOGGED IN ]

# Social Engineering





# Corporate Security Overview

The bottom right corner of the slide features several abstract, white-outlined geometric shapes. These include a large, elongated arrow-like shape pointing right, and several smaller, more complex shapes that resemble stylized chevrons or nested brackets, all rendered in a thin white line.





HEY, TOM, I JUST  
REALIZED THAT I DON'T  
NEED TO OUTFRAN THE  
BEAR; I ONLY NEED TO  
OUTFRAN YOU.

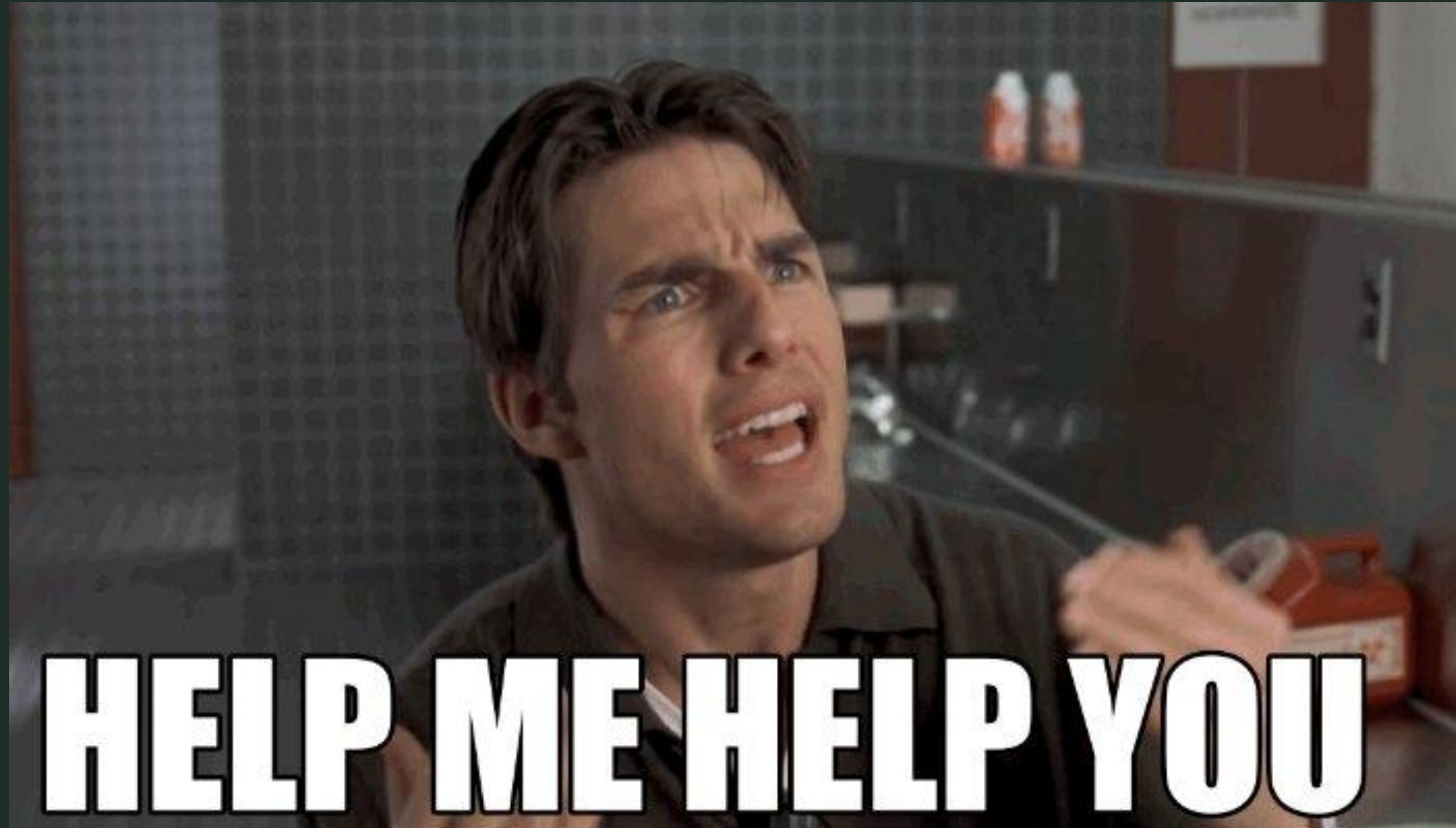




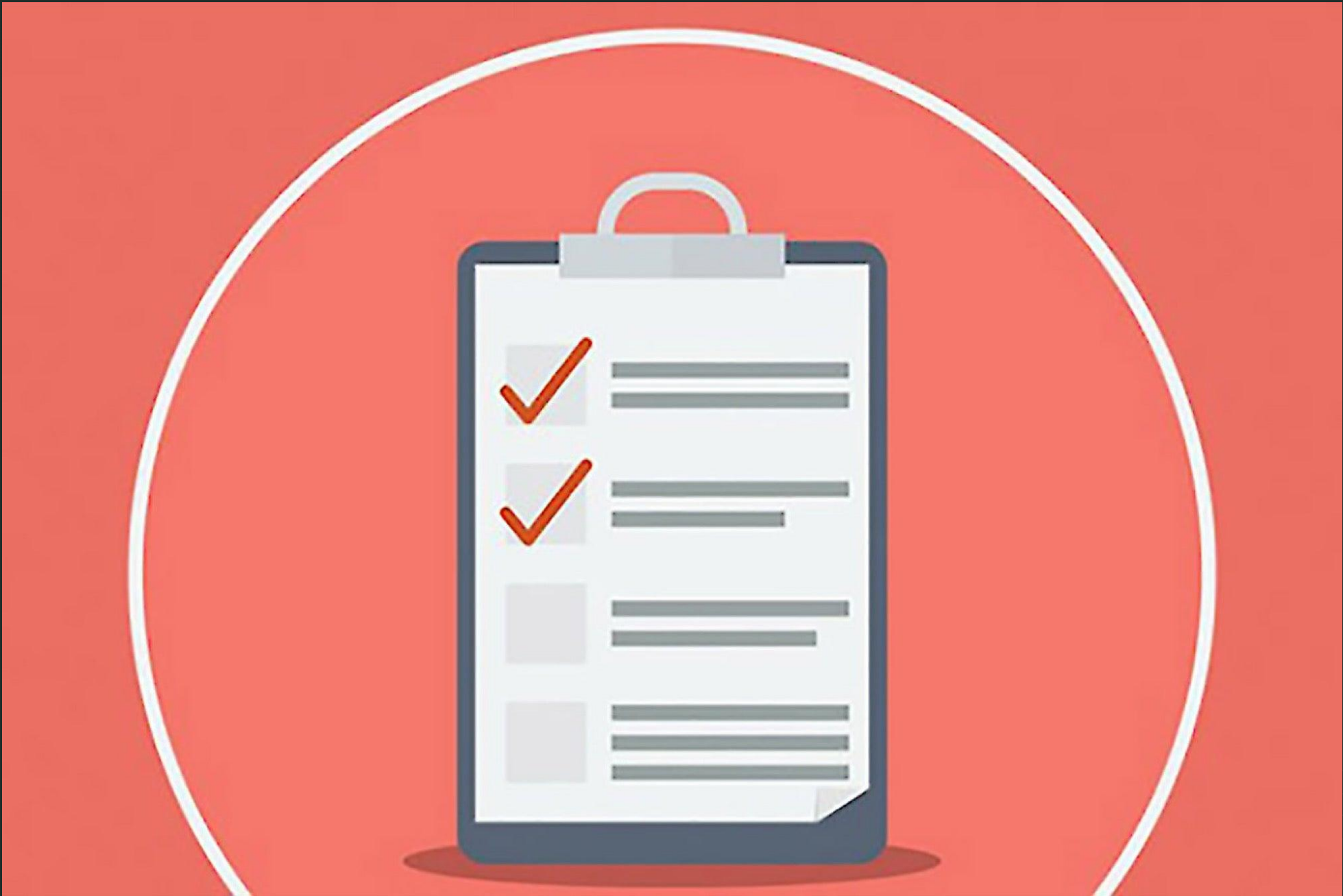


# Treasury & Security Collaboration

Abstract geometric shapes in the bottom right corner, including a large white outline of a right-pointing chevron, a smaller white outline of a right-pointing chevron, and a white outline of a right-pointing chevron with a curved bottom edge.

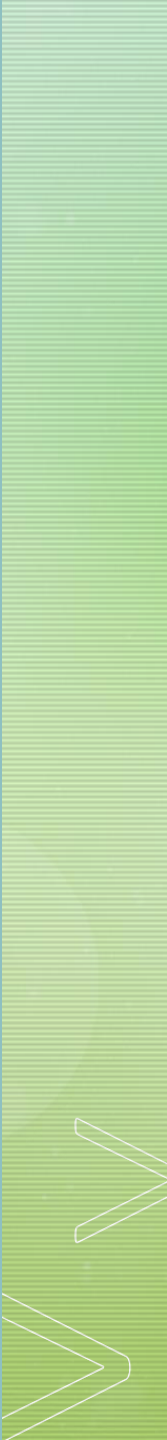


**HELP ME HELP YOU**





I didn't invent the rainy day, man.  
I just own the best umbrella.



Questions?