

# Planning and Community Health

- Rapid Urbanization =
  - Over crowded/ unsafe housing
  - Noxious industrial and manufacturing uses
  - Human and animal waste
  - Outbreaks of infectious disease
- Zoning, Housing, and Transportation
- CGS – “to protect public health, welfare and safety”



# Planning and Community Health

- Health and Human Services
- ***Food & Nutrition***
- Emergency Preparedness
- Environmental Health
- ***Active Living***
- Social/ Housing Quality/ Noise/ Security
- Visions/ Guiding Principles



# CANTON

2014 – 2024 Plan of Conservation & Development



## STRATEGIC PLAN

Planning and Zoning Commission



# CANTON

2014 - 2024 Plan of Conservation and Development



## IMPLEMENTATION PLAN

Planning and Zoning Commission



## AGRICULTURE

# 5

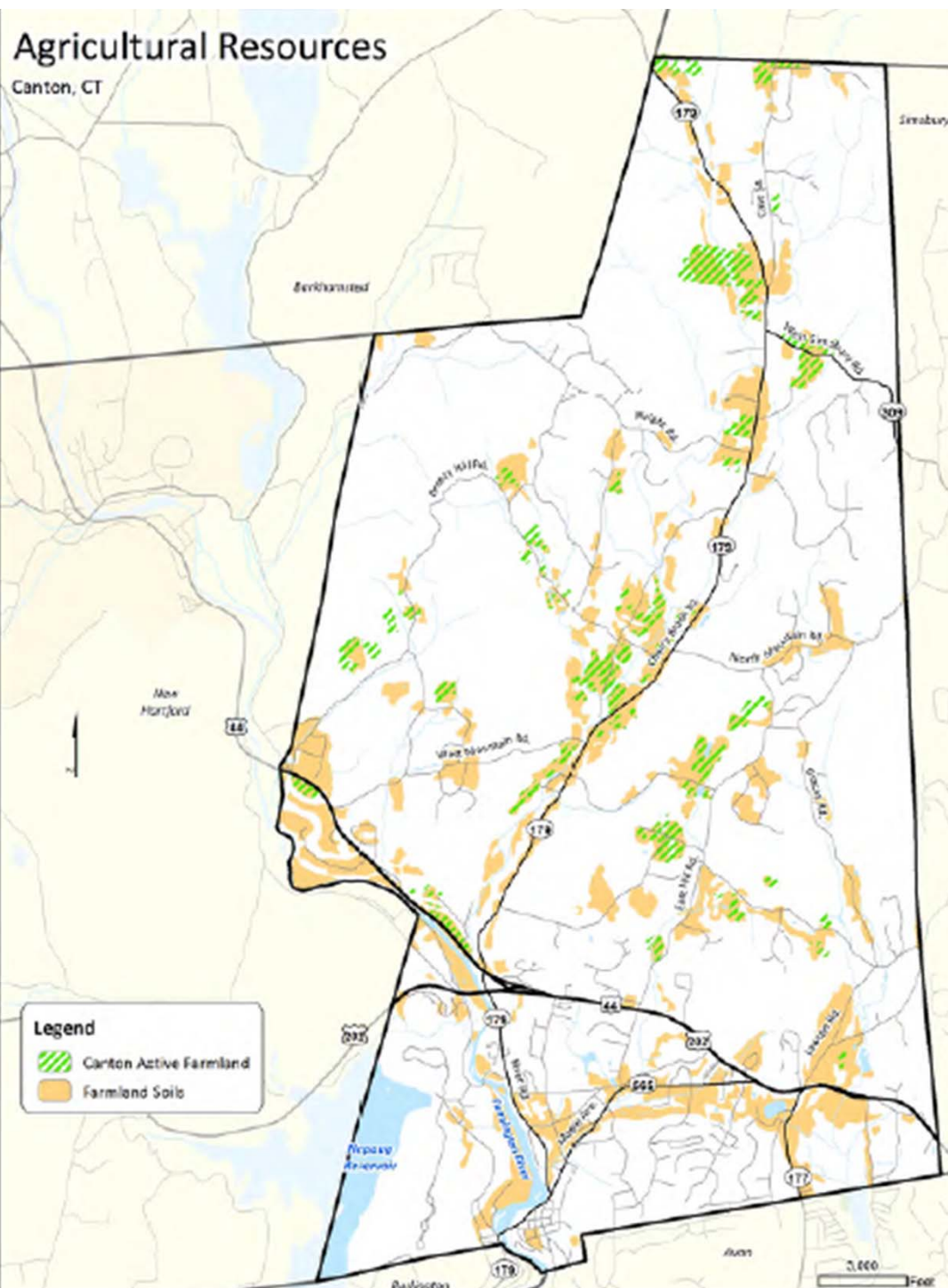
*We strive to ensure that agriculture remains a part of our character, charm, and economy*



- Local farms produce local products for local consumption.
- Local food and nursery products are fresher with less opportunity for damage due to time, travel, and handling.

# Agricultural Resources

Canton, CT



# Local/ Healthy Food Supply

- Implementation
  - Maintain an Active Agriculture Inventory of the town.
  - Create a Farmland Preservation Plan
  - Prioritize Farmland Preservation in Open Space Acquisitions
    - Value and viability for commercial farming
  - Seek grants for agricultural projects
    - Farm Kitchen

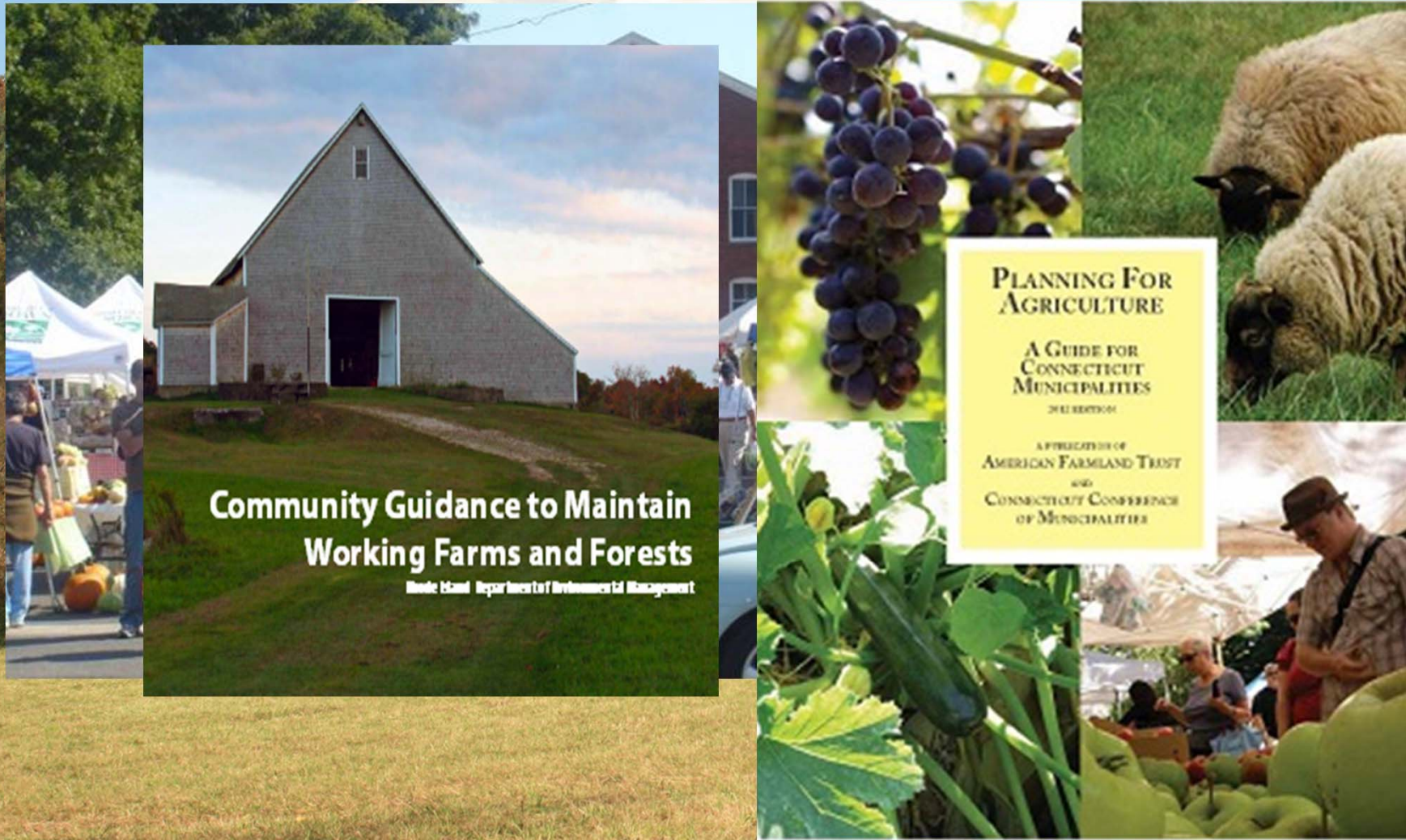


# Local/ Healthy Food Supply

- Implementation
  - Adopt “right-to-farm” ordinance
  - Revise Zoning Regulations to be local farm friendly
    - Minimize regulatory hurdles
    - Allow for expanded product lines
    - Allow on-site processing of locally grown products
    - Increase signage
    - Support CSA
    - Allow for on site events
    - Allow for expanded retail activity



# Local/ Healthy Food Supply



**Community Guidance to Maintain  
Working Farms and Forests**

Rhode Island Department of Environmental Management

**PLANNING FOR  
AGRICULTURE**

**A GUIDE FOR  
CONNECTICUT  
MUNICIPALITIES**

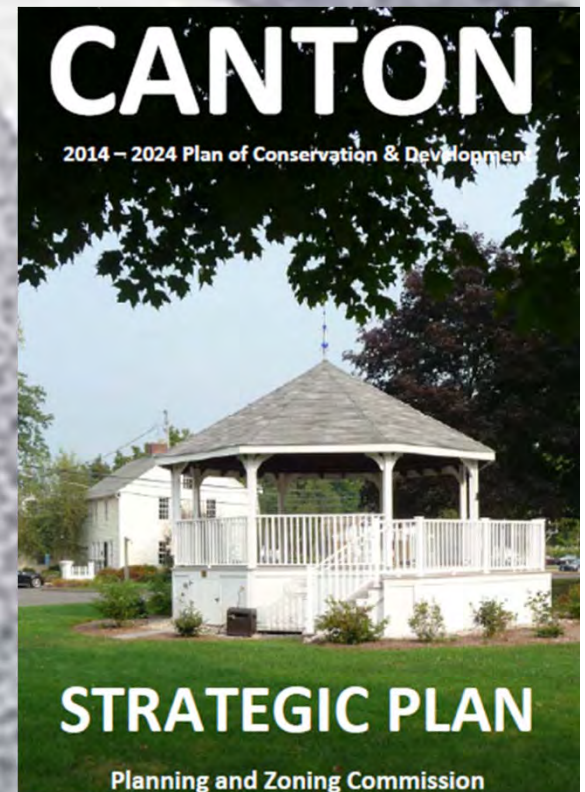
2nd EDITION

A PUBLICATION OF  
AMERICAN FARMLAND TRUST  
AND  
CONNECTICUT CONFERENCE  
OF MUNICIPALITIES

# Public Desires – Quality of Life

- “Do you people really want to live in a town where your children are walking and biking to school?”

• **“YES!”**





# Active Living/ Mobility/ Complete Streets



# Complete Streets

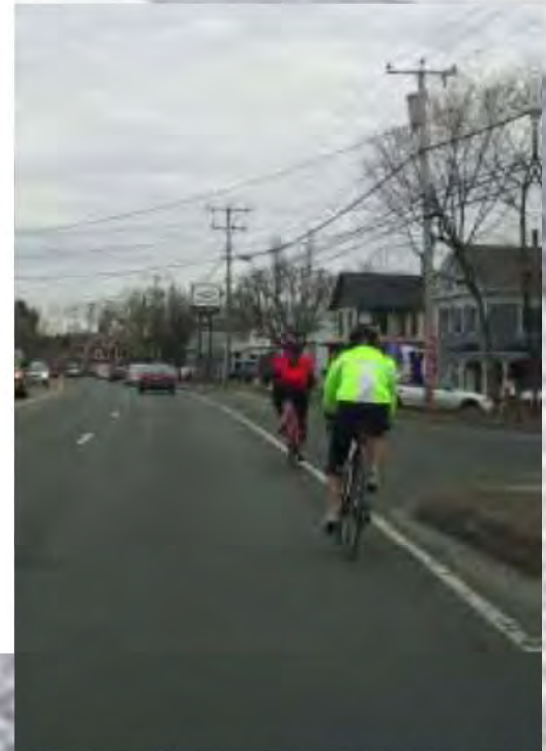


- **Complete Streets Promote Community Health**
- **Incomplete Streets Restrict Physical Activity**

The transportation aspiration of this POCD is to enhance service to the community through the development of multi-modal facilities and connections that improve circulation, access, and safety, reduce the reliance and dependence on the auto-mobile, and promote healthy activities while effectively managing the costs to the taxpayers.

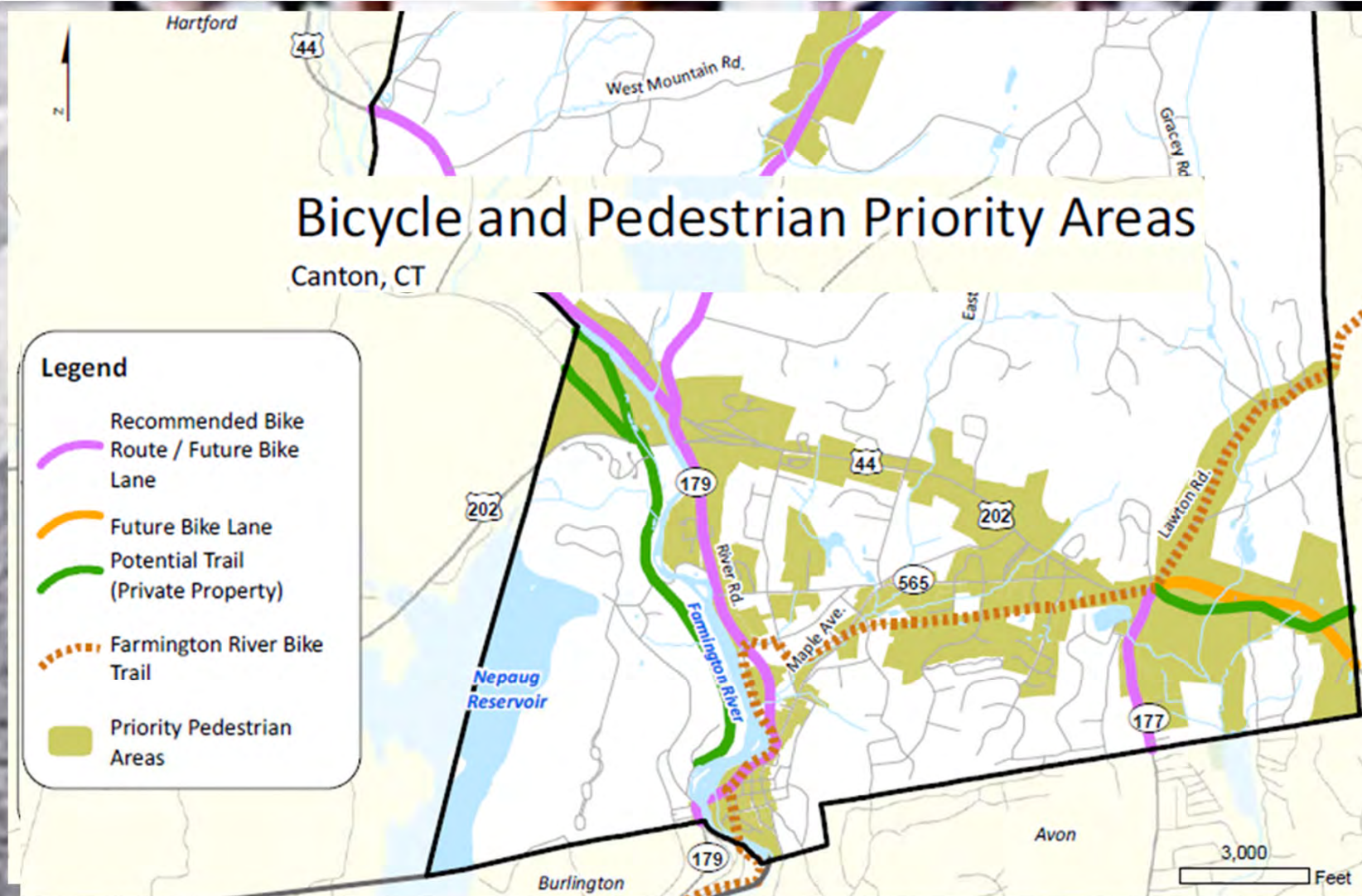


*We intend to see that transportation facilities and services are developed to best serve the entire community, including those who do not travel via automobile.*



**B.**

Provide for improved systems and facilities for pedestrian, bicycle, and public transit.





<b>7.9.</b>	<b>BICYCLE, PEDESTRIAN, AND EMERGENCY ACCOMMODATIONS.....</b>	<b>164</b>
7.9.A.	Purpose .....	164
7.9.B.	Applicability .....	164
7.9.C.	Pedestrian Design Standards .....	164
7.9.D.	Bicycle Parking Design Standards .....	165
7.9.E.	Emergency Standards .....	166

- All development shall be designed to provide safe and convenient pedestrian and bicycle access as part of any site design, including safe and convenient pedestrian and bicycle movement to and from public walkways and/ or bikeways or streets, and between developed lots





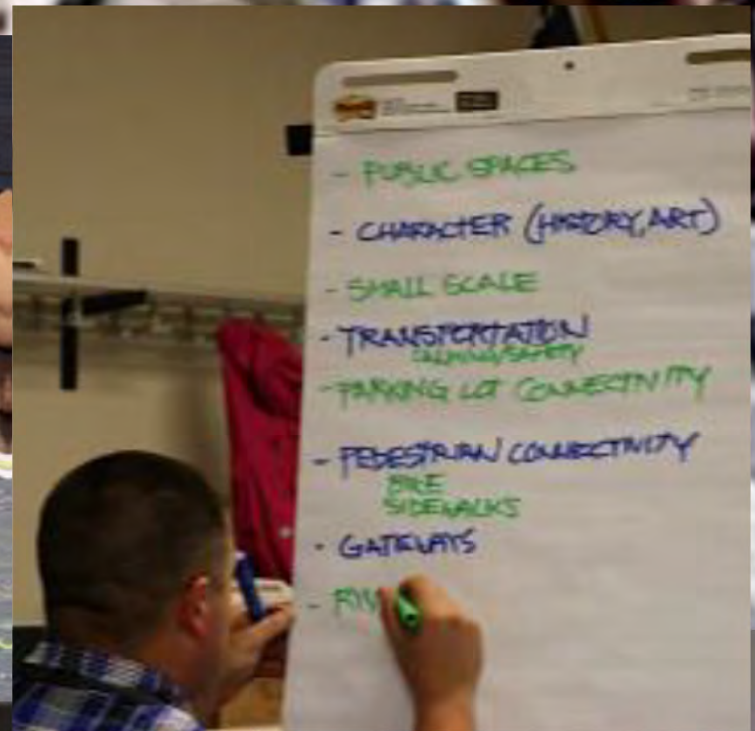
# Pedestrian Access

- Pedestrian access standards from the street to the building
- Widths
- Materials, Landscaping, Lighting, Benches
- Separation
- Connection to public sidewalk required
- Consider possible connections to adjacent lots/ ways/ or neighborhoods
- Maintenance

# Bicycle Parking

- Required for business and multi-family
- Review proximity to active transportation
- Specify standards –
  - Secure bar
  - Illuminated
  - Covered Ratio
  - Anchored, Separated
  - 6'L x 2'W x 7'VC, or Bike Locker
  - Support frame in an upright position
  - Within view of entrance or windows

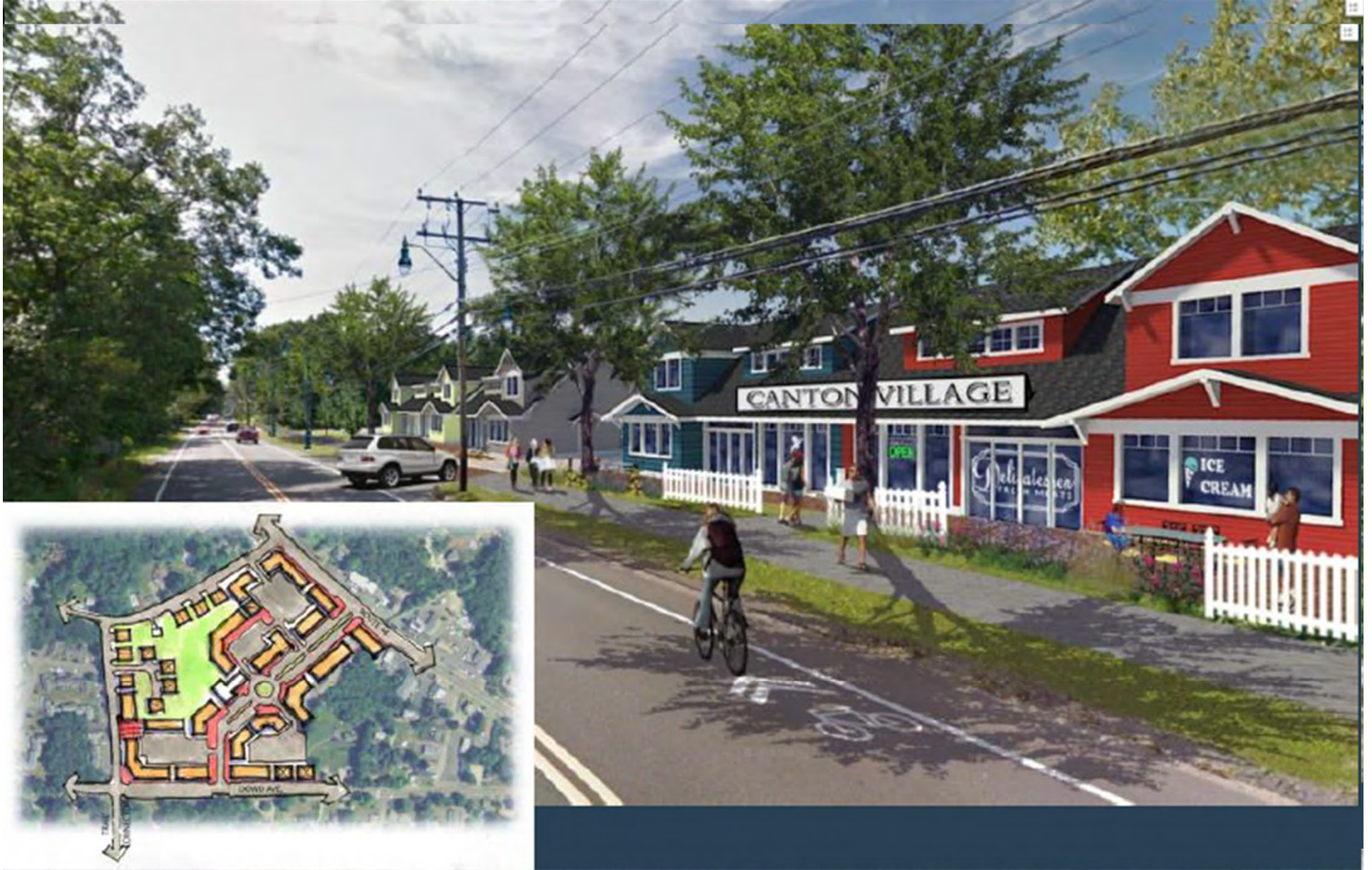
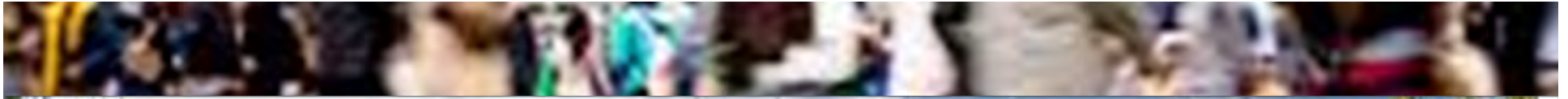






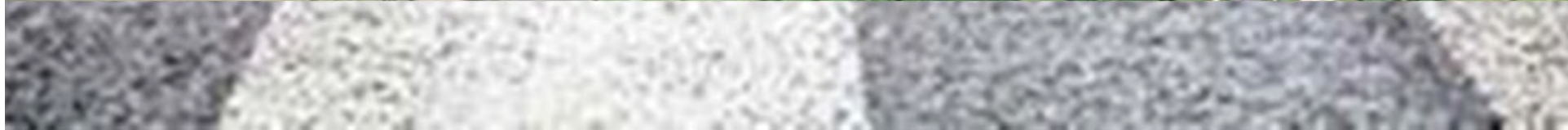






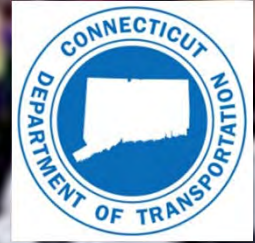








# Connecticut Bicycle and Pedestrian Advisory Board



# 2014

## ANNUAL REPORT



*Connecticut Bicycle and  
Pedestrian Advisory Board*

<http://www.ctbikepedboard.org/>  
[neil.pade@gmail.com](mailto:neil.pade@gmail.com)