

# CPRA SCHOLARSHIPS



An integral part of CPRA is providing professional development opportunities for Park & Recreational Professionals. **Colorado is already a front-runner in Parks & Recreation and CPRA will ensure this growth continues.**



## **Karon Badalamenti Change Agent Scholarship**

In honor of the passing of Karon Badalamenti, CPRE, (1961 - 2014), a **professional development scholarship of up to \$500** will be awarded annually through the dedicated Badalamenti Scholarship Fund (sponsored by Greenplay, GP RED, and private donations) **for a parks and recreation and/or allied professional or student to attend a professional development opportunity offered by Colorado Parks and Recreation Association (CPRA).**



## **MSU Denver New Certification Scholarship**

For Metropolitan State University of Denver senior students on internship or alumni from the Recreation Professions (formerly Leisure Studies) Program. **The goal of this scholarship is to help MSU alumni gain new certifications and in turn advance in their careers.** Scholarships will be awarded annually through the dedicated MSU Denver New Certification Scholarship Fund to a Colorado Parks and Recreation Association (CPRA) Ally, Professional or Student member. Scholarship funds must be put towards new certification within the recreation profession.

*A maximum of 2 Scholarship(s) will be awarded with total allocation not to exceed \$500 per scholarship.*

## **Professional Development Scholarships**



### **Gallup-Darrow-Chester Scholarships**

The Gallup-Darrow-Chester Scholarship was established to honor the memory of Virginia Seth Gallup, (1899-1995) grandmother of the originator of this fund, Catherine Virginia Darrow and her husband, William Spencer Chester, who currently reside in Evergreen, Colorado. To be eligible for a Gallup-Darrow-Chester Scholarship an applicant must be a member in good standing of CPRA at the time of application and be currently employed in a professional parks and recreation position. Please note that priority for the Gallup-Darrow-Chester scholarship funding will be given to members who are currently serving / have served CPRA or CPRA Foundation via committees, section involvement or board appointment.

*The GDC Scholarship(s) will be awarded in 2019 with total allocation not to exceed \$1,000. In some cases, more than one scholarship of lower dollar amounts may be awarded.*



### **Professional Development Scholarships**

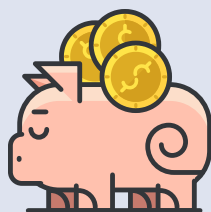
CPRA provides 12 \$500 Professional Development Scholarship annually. **These scholarship funds may be used to cover professional development expenses related to the recipients work in the Parks & Recreation field.** To qualify for this scholarship, applicants must be actively involved in the Section and be a CPRA member in good standing. These scholarships can be used both for CPRA events and non-CPRA training. These scholarship funds may be used to cover professional development expenses related to the applicants work in the Parks & Recreation field.



### **Career Development Scholarships- NEW for 2019!**

2019 launches the opportunity for **2 CPRA Career Development Scholarship for \$2,500 each.** In order to apply, you must be active within CPRA, sections, board, or organization. The ideal recipient is: Dedicated to CPRA for what it stands for; Motivated to better the Parks & Recreation Profession; Interested & invested in learning new things; Always brings positivity to the Parks & Recreation realm. **These are only being offered in 2019.**

**Scholarship  
applications  
due  
May 31, 2019!**



Are you interested in supporting CPRA Scholarships for Professional Development? Consider donating and we can put your generous donation towards a particular scholarship program you prefer to support!

Visit [www.cpra-web.org/page/Scholarships](http://www.cpra-web.org/page/Scholarships) to apply