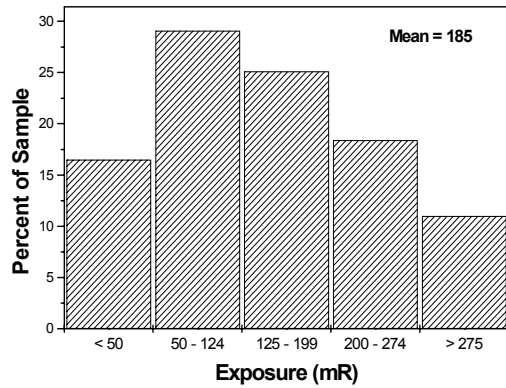
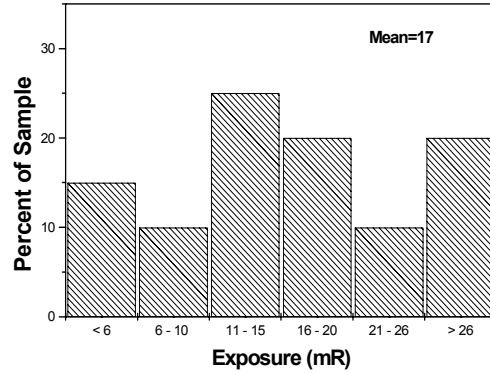


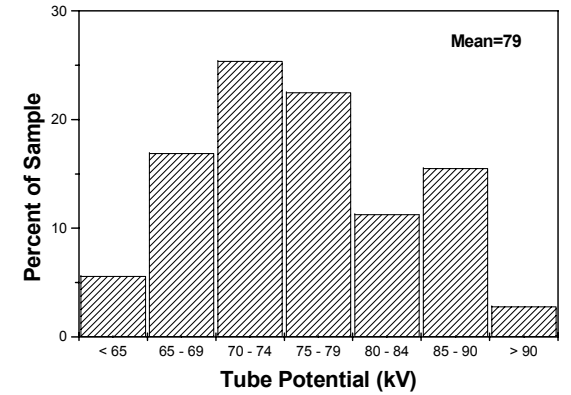
Intraoral Entrance Skin Exposure



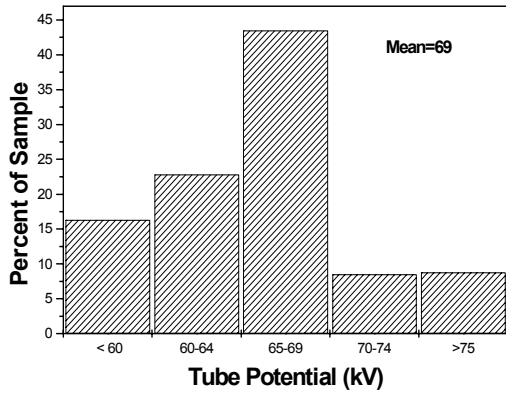
Cephalometric Entrance Skin Exposure



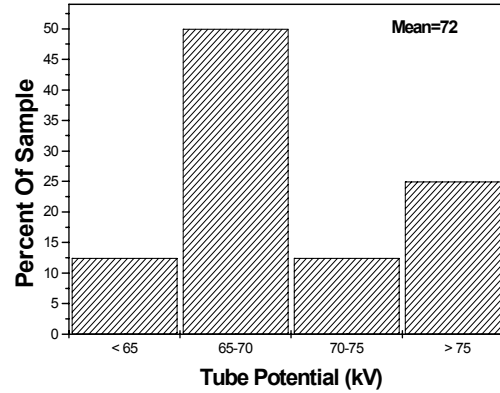
Panoramic Tube Potential Measured



Intraoral Tube Potential Measured



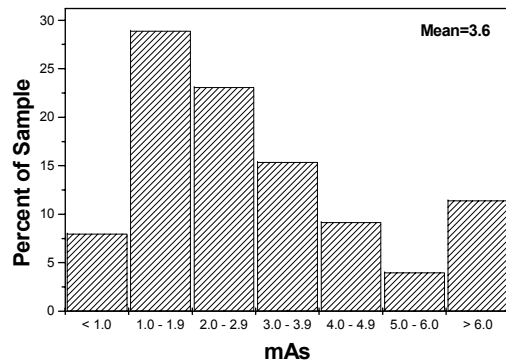
Cephalometric Tube Potential Measured



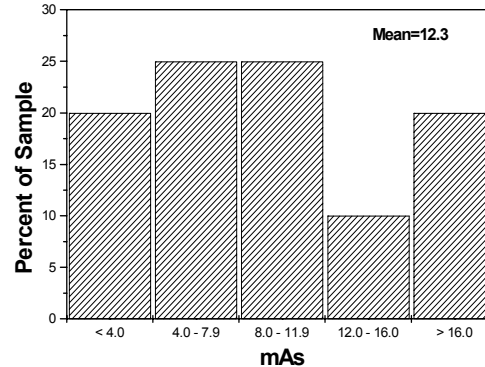
Intraoral Evaluation

	MEAN	N
ESE (D-speed; mR)	193	233
ESE (E-Speed; mR)	148	53
Selected kV	69	294
HVL (mm Al)	2.3	328
Films per patient	4	330
Exp. Time	0.4	327
Phantom film OD	1.5	324
Visible meshes	2.5	324
Darkroom OD	0.07	227

Intraoral mAs Selected



Measured Cephalometric mAs



Cephalometric & Panoramic Evaluation

CEPHALOMETRIC	MEAN	N
Selected kV	76	21
Exp. Time (sec)	0.8	18
PANORAMIC	MEAN	N
Selected kV	79	142
Exp. Time (s)	22	137

What's NEXT?

The Nationwide Evaluation of X-ray Trends (NEXT) is a national program conducted annually to measure the x-ray exposure that a standard patient receives for selected x-ray examinations. This program is conducted jointly by the Conference of Radiation Control Program Directors (CRCPD), an association of state and local radiation control agencies, and the Food and Drug Administration's (FDA) Center for Devices and Radiological Health (CDRH).

In 1999 the selected examination was of facilities performing dental radiography. A survey sample that is representative of the United States was randomly chosen from a national database. State radiation personnel were trained by the FDA to administer the survey, and 342 facilities participated. Data was collected on each facility's techniques for Intraoral, Cephalometric, and Panoramic examinations. Measurements were taken on patient exposure, tube potential, beam quality, and processing. Imaging quality was also evaluated with a phantom containing imaging objects.

Upon completion of each survey, the data is analyzed by CDRH personnel, and the results are published by the CRCPD. As the purpose of the program is to observe national trends, the published results summarize the basic statistical results of each surveyed parameter, and no attempt is made to establish potential statistical relationships. For information on how to obtain a copy of the published results of this or other NEXT surveys contact the CRCPD in Frankfort, Kentucky, at 502/227-4543.

The information contained herein is for guidance. The implementation and use of the information and recommendations are at the discretion of the user. The mention of commercial products, their sources, or their use in connection with material reported is not to be construed as either an actual or implied endorsement by CRCPD or CDRH.

Survey Results-Your Facility

Intraoral

ESE (mR) _____
 ExposureTime (sec) _____
 kV _____
 Processing Speed
 STEP* Test Result _____
 Darkroom Fog (OD) _____
 mAs _____

Cephalometric

ESE (mR) _____
 Time _____
 kV _____
 Processing Speed
 STEP* Test Result _____
 Darkroom Fog (OD) _____

Panoramic

kV _____
 Time _____

*Sensitometric Technique for the
 Evaluation of Processing

CRCPD is a nonprofit organization of individuals that regulate and control the use of radioactive material and radiation sources.

CRCPD, 502/227-4543, www.crccd.org
 6, Frankfort, KY 40601
 www.crccd.org



Nationwide Evaluation of X-Ray Trends

(NEXT)

1999 Dental X-ray Data

Conference of Radiation
 Control Program Directors, Inc. (CRCPD)

and

The Center for Devices and
 Radiological Health

U.S. DEPARTMENT OF HEALTH
 AND HUMAN SERVICES
 Public Health Service
 Food and Drug Administration