

***February 2020***

# ***NSSP Community of Practice Call***

*Trending Topic of the Month:*

*“Where, Oh Where, Could Travel History Be?”*

National Syndromic Surveillance Program

## **Community of Practice**

Resources that Advance the Science and Practice of Syndromic Surveillance

# Agenda

- **Welcome and Announcements**
- **NSSP Update**
- **Topic of the Month Discussion Panelists**
  - Natasha Close – WA Department of Health
  - Yong Wang & Krystal Collier – AZ Department of Health Services
- **Open Mic and Q & A**
- **Closing Remarks**



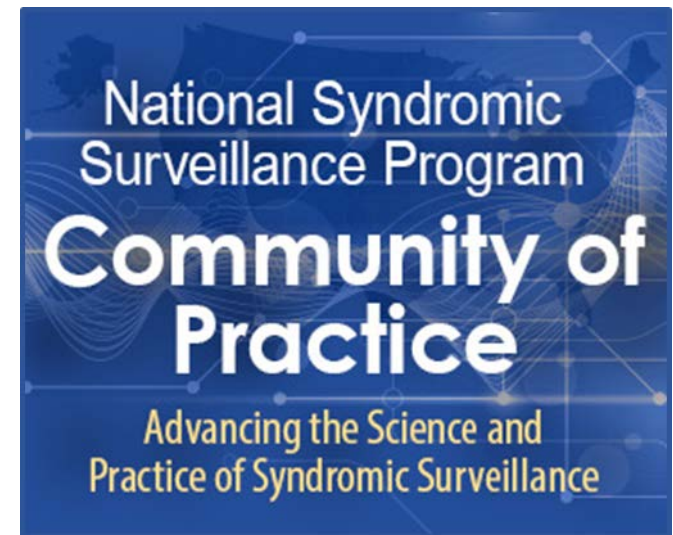
# Housekeeping

- **Recording**
  - Please be aware that all NSSP CoP-related calls are recorded
- **Call Courtesy**
  - Mute line unless speaking
  - Do not place call on hold
- **Questions**
  - All questions will be addressed during the open mic and Q&A portion of the call
  - Avenues for questions: chat box, raising hand, asking question during Q&A
- **Feedback or Topic Suggestions?**
  - Please email [syndromic@cste.org](mailto:syndromic@cste.org)



# Join the NSSP Community of Practice

- **Stay connected to NSSP and other Sys practitioners by joining the CoP**
- **Includes active topic-specific subcommittees and workgroups**
- **Email [syndromic@cste.org](mailto:syndromic@cste.org) to join!**



# Visit the NSSP CoP Knowledge Repository

- **NSSP CoP Knowledge Repository**
  - **\*NOW AT\***  
[www.knowledgerepository.syndromicsurveillance.org](http://www.knowledgerepository.syndromicsurveillance.org)
  - Curated by CSTE and interested NSSP CoP members
  - Houses developed syndrome definitions, guidance, meeting recordings/resources, webinars on tool usage, and more!

National Syndromic Surveillance Program • Community of Practice  
**KNOWLEDGE REPOSITORY**

[Search All](#)

[Webinars](#)

[Use Cases](#)

[Syndromes](#)

[Stories of Surveillance In Action](#)

[Trending Topics ▾](#)

[Meeting Recordings ▾](#)

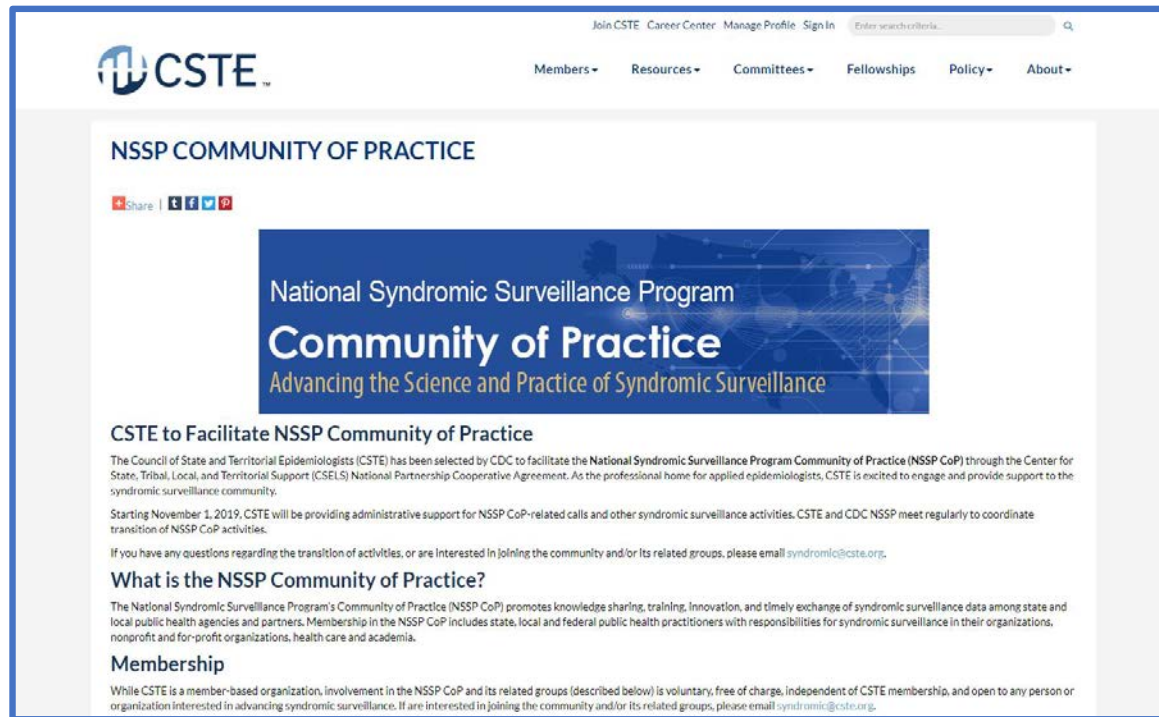


# Visit the NSSP CoP Webpage

- **NSSP CoP Webpage**

- **\*NOW AT\***

- [www.cste.org/nsspcop](http://www.cste.org/nsspcop)



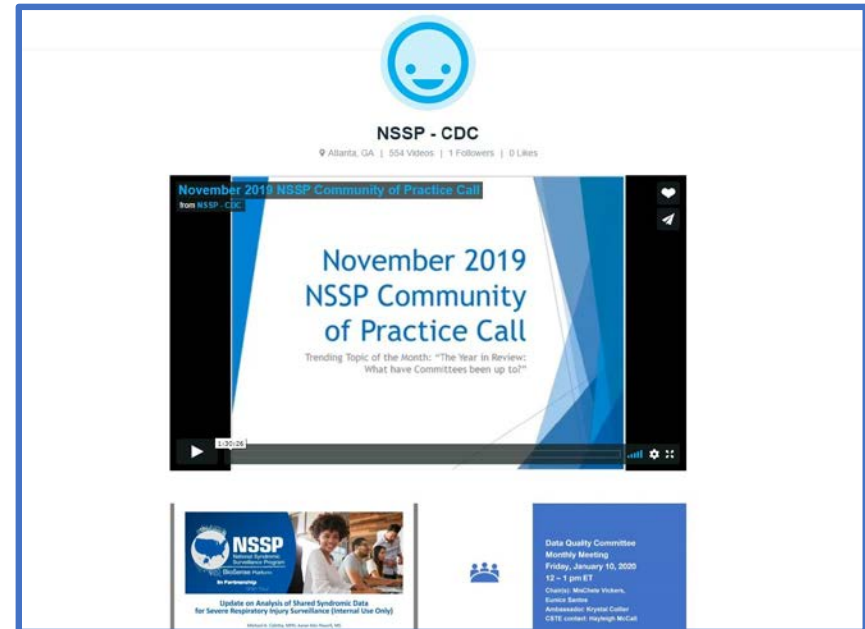
The screenshot shows the CSTE website's page for the NSSP Community of Practice. At the top, there is a navigation bar with links for 'Join CSTE', 'Career Center', 'Manage Profile', 'Sign In', and a search bar. Below the navigation bar, the CSTE logo is on the left, and a menu with 'Members', 'Resources', 'Committees', 'Fellowships', 'Policy', and 'About' is on the right. The main content area features the title 'NSSP COMMUNITY OF PRACTICE' with social media share icons. A large blue banner contains the text: 'National Syndromic Surveillance Program Community of Practice Advancing the Science and Practice of Syndromic Surveillance'. Below the banner, the text reads: 'CSTE to Facilitate NSSP Community of Practice. The Council of State and Territorial Epidemiologists (CSTE) has been selected by CDC to facilitate the National Syndromic Surveillance Program Community of Practice (NSSP CoP) through the Center for State, Tribal, Local, and Territorial Support (CSELS) National Partnership Cooperative Agreement. As the professional home for applied epidemiologists, CSTE is excited to engage and provide support to the syndromic surveillance community. Starting November 1, 2019, CSTE will be providing administrative support for NSSP CoP-related calls and other syndromic surveillance activities. CSTE and CDC NSSP meet regularly to coordinate transition of NSSP CoP activities. If you have any questions regarding the transition of activities, or are interested in joining the community and/or its related groups, please email [syndromic@cste.org](mailto:syndromic@cste.org). What is the NSSP Community of Practice? The National Syndromic Surveillance Program's Community of Practice (NSSP CoP) promotes knowledge sharing, training, innovation, and timely exchange of syndromic surveillance data among state and local public health agencies and partners. Membership in the NSSP CoP includes state, local and federal public health practitioners with responsibilities for syndromic surveillance in their organizations, nonprofit and for-profit organizations, health care and academia. Membership While CSTE is a member-based organization, involvement in the NSSP CoP and its related groups (described below) is voluntary, free of charge, independent of CSTE membership, and open to any person or organization interested in advancing syndromic surveillance. If are interested in joining the community and/or its related groups, please email [syndromic@cste.org](mailto:syndromic@cste.org).

*The NSSP CoP is supported by Cooperative Agreement # 6NU380T000297-02-01 between the Centers for Disease Control and Prevention (CDC) and the Council of State and Territorial Epidemiologists. Its contents are solely the responsibility of the authors and do not necessarily represent the official views of CDC.*

**NSSP Community of Practice**

# Visit the NSSP CoP Vimeo

- **NSSP CoP Vimeo**
  - **\*NOW AT\***  
[www.vimeo.com/cdcnssp](http://www.vimeo.com/cdcnssp)
  - Call recordings are now housed on the CDC NSSP Vimeo account
  - Recordings will continue to be linked to the NSSP CoP Knowledge Repository



# Participate in Future Calls

Search <span style="float: right;">Print Help</span>						
◀ February 2020 ▶						
Today Go to Date						
Select Category						
NSSP Community of Practice <span style="float: right;">Go Month Week Day List</span>						
Sunday	Monday	Tuesday	Wednesday	Thursday	Friday	Saturday
						1
2	3	4	5 ● Syndrome Definition Committee Call (Monthly) 1:00pm - 2:00pm	6	7 ● SPHERR Committee (Semimonthly) 2:00pm - 2:45pm	8
9	10 ● NSSP CoP Core Committee Call (Monthly) 1:00pm - 2:30pm	11	12	13	14 Valentine's Day ● Data Quality Committee Call (Monthly) 12:00pm - 1:00pm	15
16	17 President's Day	18 ● NSSP Community of Practice Call (Monthly) 3:00pm - 4:30pm	19	20	21 ● SPHERR Committee (Semimonthly) 2:00pm - 2:45pm	22
23	24	25	26	27	28	29

*The NSSP CoP is supported by Cooperative Agreement # 6NU380T000297-02-01 between the Centers for Disease Control and Prevention (CDC) and the Council of State and Territorial Epidemiologists. Its contents are solely the responsibility of the authors and do not necessarily represent the official views of CDC.*



**NSSP Community of Practice**



# Participate in Future Calls

Sunday	Monday	Tuesday	Wednesday	Thursday	Friday	Saturday
1	2	3	4 ● Syndrome Definition Subcommittee Call (Monthly) 1:00pm - 2:00pm	5	6 ● SPHERR Subcommittee (Twice a Month) 2:00pm - 2:45pm	7
8 Daylight Saving Time Begins	9 ● NSSP CoP Core Committee Call (Monthly) 1:00pm - 2:30pm	10	11	12	13 ● Data Quality Subcommittee Call (Monthly) 12:00pm - 1:00pm	14
15	16	17 Saint Patrick's Day ● NSSP Community of Practice Call (Monthly) 3:00pm - 4:30pm	18	19	20 ● Overdose Surveillance Subcommittee 1:00pm - 2:00pm ● SPHERR Subcommittee (Twice a Month) 2:00pm - 2:45pm	21
22	23	24	25	26	27	28
29	30	31				

*The NSSP CoP is supported by Cooperative Agreement # 6NU380T000297-02-01 between the Centers for Disease Control and Prevention (CDC) and the Council of State and Territorial Epidemiologists. Its contents are solely the responsibility of the authors and do not necessarily represent the official views of CDC.*



**NSSP Community of Practice**



# ***CSTE Announcements***

The NSSP CoP is supported by Cooperative Agreement # 6NU380T000297-02-01 between the Centers for Disease Control and Prevention (CDC) and the Council of State and Territorial Epidemiologists. Its contents are solely the responsibility of the authors and do not necessarily represent the official views of CDC.

# 2020 CSTE Annual Conference



- Over 35 SyS-related abstracts submitted under the S/I Track
- Currently in the abstract review phase
- Official travel letters with sponsorship details will be sent to approved sponsored travelers **on or after February 5<sup>th</sup>**

# Agenda

- **Welcome and Announcements**
- **NSSP Update**
- **Topic of the Month Discussion Panelists**
  - Natasha Close – WA Department of Health
  - Yong Wang & Krystal Collier – AZ Department of Health Services
- **Open Mic and Q & A**
- **Closing Remarks**





# ***NSSP Update***

*The NSSP CoP is supported by Cooperative Agreement # 6NU380T000297-02-01 between the Centers for Disease Control and Prevention (CDC) and the Council of State and Territorial Epidemiologists. Its contents are solely the responsibility of the authors and do not necessarily represent the official views of CDC.*

# Agenda

- **Welcome and Announcements**
- **NSSP Update**
- **Topic of the Month Discussion Panelists**
  - Natasha Close – WA Department of Health
  - Yong Wang & Krystal Collier – AZ Department of Health Services
- **Open Mic and Q & A**
- **Closing Remarks**





# ***Topic of the Month Presentations***

The NSSP CoP is supported by Cooperative Agreement # 6NU380T000297-02-01 between the Centers for Disease Control and Prevention (CDC) and the Council of State and Territorial Epidemiologists.  
Its contents are solely the responsibility of the authors and do not necessarily represent the official views of CDC.

# Trending Topic of the Month

## “Where, Oh Where, Could Travel History Be?”

- Natasha Close – WA Department of Health
- Yong Wang & Krystal Collier – AZ Department of Health Services





# WA State Travel History Guidance



OBX Segment Data	Segment Usage	Segment-specific implementation		
		Field	Field Name	Literal values (in quotes) and implementation notes
Travel History	ED: O IN: O AC: O UC: O	OBX-1	Set ID	Use the literal value "1"
		OBX-2	Value Type	"TX"
		OBX-3.1	<u>Obs Identifier</u>	"10182-4"
		OBX-3.3	Name of Coding System	"LN"
		OBX-5.1	Text data	Provide any information about travel history collected, including if patient reports no travel. A 30 day travel history is requested at a minimum.  Sample travel history with multiple travel locations and dates: "Yes~Brazil;20181005;20181006~Mexico;20181007;20181008"
OBX-11	<u>Obs Result Status</u>	From value set: <b><i>PHVS_ObservationResultStatus_HL7_2x</i></b>		

# So many questions...

---

- Should we say more?
  - Limit to out of country travel only
  - Send only country names (not cities/provinces)
  - Limit to travel within X number of days
  - Include multiple locations?
  - Indicate if the person did NOT travel?
- What guidance do others give?
- When is travel info gathered?
  - Every visit?
  - Certain symptoms?
  - During certain events/timeframes?
- Are there a routine set of questions asked or info collected?
- How standardized is the information collected across systems?
  - Is it structured or free-form?



# ***Open Mic and Q&A***

*The NSSP CoP is supported by Cooperative Agreement # 6NU380T000297-02-01 between the Centers for Disease Control and Prevention (CDC) and the Council of State and Territorial Epidemiologists. Its contents are solely the responsibility of the authors and do not necessarily represent the official views of CDC.*

The background of the slide is a solid orange color. Overlaid on this background is a faint, light-colored network diagram. This diagram consists of numerous small circular nodes connected by thin, light-colored lines. Some nodes are larger than others, and the lines form a complex, interconnected web that spans the width and height of the slide. The overall aesthetic is clean and modern, suggesting a technical or scientific theme.

# ***Closing Remarks***

***Next Call:  
Tuesday, March 17<sup>th</sup> at 3pm ET***