



Overview of the Draft Carbon Monoxide (CO) Poisoning Message Mapping Guide

**CSTE Webinar
August 8, 2019**

**Mikyong (Meekie) Shin, DrPH, MPH, RN
Noreen Kloc, MPH
Centers for Disease Control and Prevention**

Agenda

- Carbon Monoxide (CO) poisoning background
- Message Mapping Guide (MMG) overview
- How to use the CO poisoning MMG to build a message
- Key CO poisoning information
- Objectives of the external review and timeline

Audience

- State health department informatics and epidemiology staff involved with implementing the CO Poisoning MMG

CO Poisoning Background

CO Poisoning Background

- CO is a colorless, odorless, nonirritating gas that is produced through the incomplete combustion of carbon-containing substances.
- CO poisoning occurs from breathing in elevated air levels of CO.
- Power outage related CO poisoning during natural disasters has been well documented.*
- Unintentional non-fire related (UNFR) CO poisoning death is one of the leading accidental deaths in the United States.

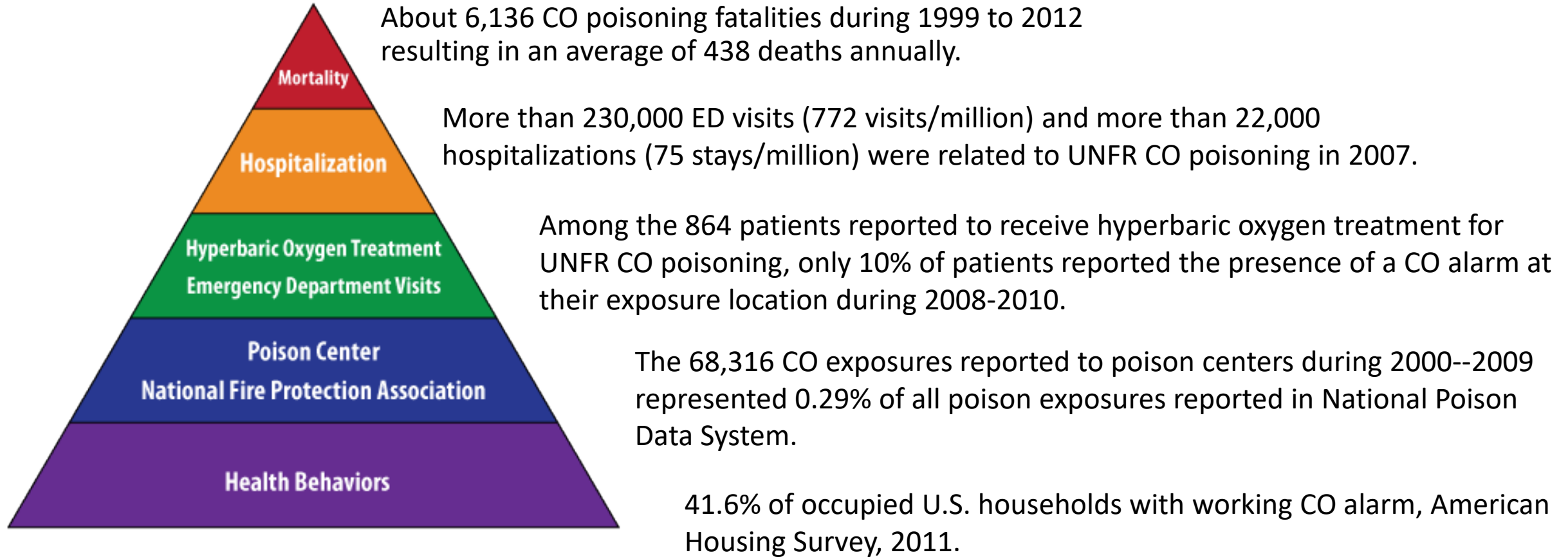
* Power outage related CO exposure <https://www.cdc.gov/co/studies.htm>

CO Poisoning Surveillance Data

- No active national surveillance system for CO poisoning.
- Estimates and surveillance activities rely on data sources that were not primarily designed for CO poisoning surveillance.
- The CDC National Environmental Tracking Network collects and disseminates unintentional CO poisoning data (hospitalizations, emergency department visits, and deaths) in a standard way to monitor trends and better understand the health consequences of CO poisoning across the United States.
- CO poisoning: a nationally notifiable condition since 2014.*

* COP 2018 Case Definition <https://wwwn.cdc.gov/nndss/conditions/carbon-monoxide-poisoning/case-definition/2019/>

Summary of CO Poisoning Surveillance Data



18-EH-01 CSTE Position Statement*:

Tier 1 or Tier 2 surveillance: ☒Confirmed, ☒Probable

Tier 1

Case Classifications using clinical, laboratory, epidemiologic, and exposure data

Confirmed:

Confirmed laboratory evidence **OR**
presumptive or supportive clinical evidence AND confirmatory exposure evidence

Probable:

presumptive laboratory evidence **OR**
presumptive clinical evidence AND possible exposure evidence, **OR**
presumptive or supportive clinical evidence AND epidemiologic linkage

* <https://wwwn.cdc.gov/nndss/conditions/carbon-monoxide-poisoning/case-definition/2019/>

18-EH-01 CSTE Position Statement*

Tier 1 Confirmed

Case Classifications using clinical, laboratory, epidemiologic, and exposure data

Confirmed:

Confirmed laboratory evidence **OR**
presumptive or supportive clinical evidence **AND** confirmatory exposure evidence

Confirmatory laboratory evidence:

A person who does not smoke, or a child (age < 14 years) whose smoking status is unknown, and has a carboxyhemoglobin (COHb) level of $\geq 5.0\%$ as measured in a blood sample

Presumptive clinical evidence: Loss of consciousness OR Death

Supportive clinical evidence: A person with signs or symptoms consistent with CO poisoning, which may include elevated pulse CO-oximetry measurement and/or non-specific symptoms such as nausea, vomiting, confusion, shortness of breath, and chest pain

A person who had an exposure to an elevated level of CO based on a dedicated or multi-gas meter/instrument (e.g., fire department notation) for a known duration that is consistent with CO poisoning.

* <https://wwwn.cdc.gov/nndss/conditions/carbon-monoxide-poisoning/case-definition/2019/>

18-EH-01 Position Statement*

Tier 2 surveillance: ☒Confirmed, ☒Probable

Tier 2

Case Classification using administrative data

Confirmed:

- Hospital discharge and ED records: explicit ICD-10-CM with CO poisoning
- Death Certificates: explicit ICD-10 CO poisoning as a cause of death or a significant condition contributing to death

Probable:

- Hospital discharge and ED records: ICD-10-CM with CO poisoning by motor vehicle exhaust
- Poison Control Center Records: exposure to CO **AND** a moderate or major medical outcome, or death
- Workers compensation records: paid claim containing a finding, problem, diagnosis, or other indication of exposure to CO or CO poisoning

* <https://wwwn.cdc.gov/nndss/conditions/carbon-monoxide-poisoning/case-definition/2019/>

Why Implement the CO Poisoning MMG?

- Allow jurisdictions to map variables so that CDC can receive and compile data electronically.
- Improve data transmission and consolidate data streams to reduce burden on jurisdictions in reporting cases.
- Provide standardized data elements and valid values for variables – saving extensive time and resources to capture information.
- Support linkage of records to find a new or prevalent case.
- Helps calculate more accurate counts and rates of morbidity and mortality.

CO Poisoning Draft MMG Overview

- Generic MMG data elements
- Draft CO Poisoning MMG—Based on 2018 CSTE Position Statement
 - Surveillance (demographics, data reporting source, exposure source, intent, fire-related, extreme-weather, power outage, site of exposure, etc.)
 - Incident/outbreak information (Epi-linked, date, etc.)
 - Carboxyhemoglobin level value in Test Type repeating group
 - Pulse CO-oximetry measurement value in Test Type repeating group
 - Treatment information
 - CO epidemiology (alarm, smoking status, marijuana smoking status)
 - Industry and occupation repeating group

Improvement of CO Poisoning Surveillance

- Collect clinical, laboratory, epidemiologic, and exposure data.
- Provide standardized criteria for case identification and classification for CO poisoning.
- Plan for prevention program, identification of high-risk areas and population sub-groups.
- Investigation of novel exposure pathways and previously unknown determinants/poisoning scenarios.

CO Poisoning Message Mapping Guide (MMG) Overview

MMG Overview

Includes data elements to be used in HL7 case notifications sent to CDC

ID, age, sex, hospitalized...

Lab test results, epi exposure ...



CO Poisoning MMG Layout

A	B	C	D	E	F	G	H
Data Element (DE) Name	DE Identifier Sent in HL7	DE Code System	Data Element Description	Data Type	CDC Priority	May Repeat	Value Set Name (VADS Hyperlink)
Data Reporting Source	INV1303	N/A	What is the facility reporting the data or the data source for case ascertainment?	Coded	P	Y	Data Reporting Source (CO)
Intent of Exposure	92945-5	LN	Was the intent of the carbon monoxide exposure self-harm/assault (intentional) or accidental (unintentional)?	Coded	P	N	Intent of Exposure (CO)
Fire Related Exposure	TBD		Was the carbon monoxide exposure related to a fire?	Coded	P	N	Yes No Unknown (YNU)
Power Outage Event	397789006	SCT	Was the carbon monoxide exposure related to an event causing a power outage?	Coded	P	N	Yes No Unknown (YNU)
Extreme Weather	92943-0	LN	Was the carbon monoxide exposure related to an extreme weather event?	Coded	P	N	Extreme Weather Type (CO)
Extreme Weather Type	TBD	N/A	Identify the extreme weather event occurring when the patient was exposed to	Coded	P	Y	Extreme Weather Type (CO)

◀ ▶
Introduction
MMG Column Descriptions
CO Poisoning Data Elements
CO Poisoning TS
⌕

CO Poisoning MMG Layout with HL7 Columns

A	B	E	F	G	J	K	L	M	N	O	P
Data Element (DE) Name	DE Identifier Sent in HL7 Message	Data Type	CDC Priority	May Repeat	HL7 Message Context	HL7 Data Type	HL7 Usage	HL7 Cardinality	HL7 Implementation Notes	Repeating Group Element	Sample Segment
Data Reporting Source	INV1303	Coded	P	Y	OBX segment with OBX-	CWE	RE	[0..*]		NO	OBX nn CWE INV1303^Data Reporting Source^N/A C0814525^Medical
Intent of Exposure	92945-5	Coded	P	N	OBX segment with OBX-3.1=92945-5	CWE	RE	[0..1]		NO	OBX nn CWE 92945-5^Intent of Exposure^LN 361390002^Unintentional^SCT F
Fire Related Exposure	TBD	Coded	P	N							
Power Outage Event	397789006	Coded	P	N	OBX segment with OBX-3.1=397789006	CWE	RE	[0..1]		NO	OBX nn CWE 397789006^Power Outage Event^SCT Y^Yes^HL70136 F
Extreme Weather	92943-0	Coded	P	N	OBX segment with OBX-3.1=92943-0	CWE	RE	[0..1]		NO	OBX nn CWE 92943-0^Extreme Weather^LN N^No^HL70136 F
Extreme Weather	TBD	Coded	P	Y	OBX segment	CWE	RE	[0..*]		NO	OBX nn CWE TBD^Extreme

Introduction
MMG Column Descriptions
CO Poisoning Data Elements
CO Poisoning TS
+

CO Poisoning MMG with GenV2 Data Elements

A	B	C	D	E	F	G	H	I
Data Element (DE) Name	DE Identifier Sent in HL7 Message	DE Code System	Data Element Description	Data Type	CDC Priority	May Repeat	Value Set Name (VADS Hyperlink)	Value Set Code
Case Disease Imported Code	77982-7	LN	Indication of where the disease/condition was likely acquired.	Coded	P	N	Disease Acquired Jurisdiction	PHVS_DiseaseAcquiredJurisdiction_NND
Imported Country	INV153	PHINQUES	If the disease or condition was imported, indicates the country in which the disease was likely acquired.	Coded	P	N	Country	PHVS_Country_ISO_3166-1
Imported State	INV154	PHINQUES	If the disease or condition was imported, indicates the state in which the disease was likely acquired.	Coded	P	N	State	PHVS_State_FIPS_5-2
Imported City	INV155	PHINQUES	If the disease or condition was imported, indicates the city in which the disease was likely acquired.	Coded	P	N	City	PHVS_City_USGS_GNIS
Imported County	INV156	PHINQUES	If the disease or condition was imported, contains the county of origin of the	Coded	O	N	County	PHVS_County_FIPS_6-4

◀ ▶
Introduction
MMG Column Descriptions
CO Poisoning Data Elements
CO Poisoning TS
⊕

CO Draft MMG Highlights (May Repeat=Y)

Data Reporting Source

- Hospital (Hospital discharge),
- Emergency room (Emergency department),
- Poison control center,
- Laboratory (Laboratory report),
- Vital statistics (Death certificate),
- Provider report (clinician report),
- Medical examiner report,
- Urgent care,
- Hyperbaric facility,
- Electronic medical record,
- Workers compensation record,
- Unknown,
- Other ()

Signs and Symptoms

- Headache,
- Dizziness/vertigo,
- Loss of consciousness,
- Nausea,
- Vomiting,
- Confusion,
- Shortness of breath,
- Chest pain,
- Other ()

CO Draft MMG Highlights (Existing Code, YNU or New Code)

Smoking Status

(PHVS SmokingStatus CDC)

- Current some day smoker
- Former smoker
- Never smoker
- Smoker, current status unknown
- Current every day smoker
- Unknown if ever smoked

■ Fire-related Exposure

- Yes / No /Unknown

■ Power outage event

- Yes/ No /Unknown

■ Extreme weather

- Yes/ No /Unknown

Intent of Exposure

- Intentional
- Unintentional
- Unknown

CO Draft MMG Highlights (Text or Numeric Information)

- **Incident Name (Case Outbreak Name in GenV2)**
(Text)
- **Event Notes**
(Text)
- **Carboxyhemoglobin Level**
(Numeric ---999.9 %)
- **Pulse CO-oximetry Measurement**
(Numeric---999.9%)

Sample Test Scenarios and Messages will be Available

- <https://wwwn.cdc.gov/nndss/case-notification/message-mapping-guides.html>, and select “MMGs in Development”
- Included in the same workbook as the MMG

Data Element (DE) Name	DE Identifier Sent in HL7	DE Code System	Data Element Description	Data Type	CDC Priority	May Repeat	Value Set Name (VADS Hyperlink)	CO Poisoning Test Message 1
								Case from a poison center (probable). Case had a confirmed lab criteria at the Emergency (confirmed). Died (Death certificate Dx-confirmed).
Data Reporting Source	PHC2193	CDCPHIN	What is the facility reporting the data or the data source for case ascertainment?	Coded	P	Y	Data Reporting Source (CQ)	Emergency room, Poison control center, Vital statistics (Death certificate)
Poison Control Center Record	92942-2	LN	Patient with a poison control record indicating exposure to carbon monoxide.	Coded	P	N	Poison Control Center Record (CQ)	Major medical outcome
Treatment Site	93046-1	LN	If patient has a poison control record, indicate where the treatment was managed.	Coded	P	N	Treatment Site (CQ)	Transported to health-care facility
Intent of Exposure	92945-5	LN	Was the intent of the carbon monoxide exposure self-harm/assault (intentional) or accidental (unintentional)?	Coded	P	N	Intent of Exposure (CQ)	Unintentional

CO Poisoning Sample HL7 Message

Data Element (DE) Name	DE Identifier Sent in HL7	DE Code System	Data Element Description	Data Type	CDC Priority	May Repeat	Value Set Name (VADS Hyperlink)	CO Poisoning Test Message 1
Generator Location	INV1296	PHINQUE	If the exposure source is generator, where was it placed while it was running?	Coded	P	N	Generator Location (CQ)	PHC2173=Inside in the living space, basement or enclosed porch
Generator Distance	INV1297	PHINQUE	How many feet was the generator placed from the (house/attached	Coded	P	N	Generator Distance (CQ)	PHC2168=10 - < 15 feet
Carbon Monoxide Alarm Present	INV1293	PHINQUE	Patient was in a location where a carbon monoxide detector was present.	Coded	P	N	Yes No Unknown (YNU)	N=No
Carbon Monoxide Alarm Sounded	INV1294	PHINQUE	The carbon monoxide detector's alarm sounded.	Coded	P	N	Yes No Unknown (YNU)	N=No

```

MSH|^~\&|SendAppName^2.16.840.1.114222.TBD^ISO|Sending-Facility^2.16.840.1.114222.TBD^ISO|PHINCDS^2.16.840.1.114222.4.3.2.10^ISO|PHIN^2.
NOTF_ORU_v3.0^PHINProfileID^2.16.840.1.114222.4.10.3^ISO~Generic_MMG_V2.0^PHINMsgMapID^2.16.840.1.114222.4.10.4^ISO~Carbon_Monoxide_
PID|1||COPoisoning_TC01^^^SendAppName&2.16.840.1.114222.nnnn&ISO||~^^^^^S||19490401|M||2106-3^White^CDCREC|^42^17350|||eng^
OBR|1||PA1001^SendAppName^2.16.840.1.114222.TBD^ISO|68991-9^Epidemiologic Information^LN||20190309|||||||20190309|||F||||
OBX|1|CWE|INV1296^Generator Location^PHINQUESTION||PHC2173^Inside in the living space, basement or enclosed porch^CDCPHINVS||||F
OBX|2|CWE|INV1297^Generator Distance^PHINQUESTION||PHC2168^10 - < 15 feet^CDCPHINVS||||F
OBX|3|CWE|INV1293^Carbon Monoxide Alarm Present^PHINQUESTION||N^No^HL70136||||F
OBX|4|CWE|INV1294^Carbon Monoxide Alarm Sounded^PHINQUESTION||N^No^HL70136||||F
OBX|5|CWE|95875007^Carbon Monoxide Elevated Exposure^SCT||N^No^HL70136||||F
  
```


Objectives of the External Review and Timeline

What We Expect From The External Review

- Any critical and important information not included in the current draft MMG?
- Any data elements or value sets that you cannot collect/capture with your current system?
- Any structure/format issues (data type or repeat option)?
- Any potential implementation issues related to the data elements requested?
- Any elements or values that need more clarification?

COP MMG Timeline

- **7/25/2019:** External review for draft MMG began
- **8/08/2019:** Webinar to present draft MMG for feedback
- **8/22/2019:** External review for draft MMG closes
- **September 2019:** CDC review of feedback and update of MMG
- **October 2019:** Pilot Test-Ready CO Poisoning MMG

How to submit feedback

- Please provide feedback by 8/22/2019
- To report your feedback, please use the CO Poisoning MMG feedback document: <https://wwwn.cdc.gov/nndss/case-notification/message-mapping-guides.html>, click “MMGs in Development” tab
- Email feedback to: edx@cdc.gov
- Subject line: “Draft CO Poisoning MMG Feedback”
- Feedback will be reviewed by CDC; outcome of reconciliation available
 - To submit a request for reconciled feedback, please contact edx@cdc.gov, subject line “Request for COP Reconciled Feedback”

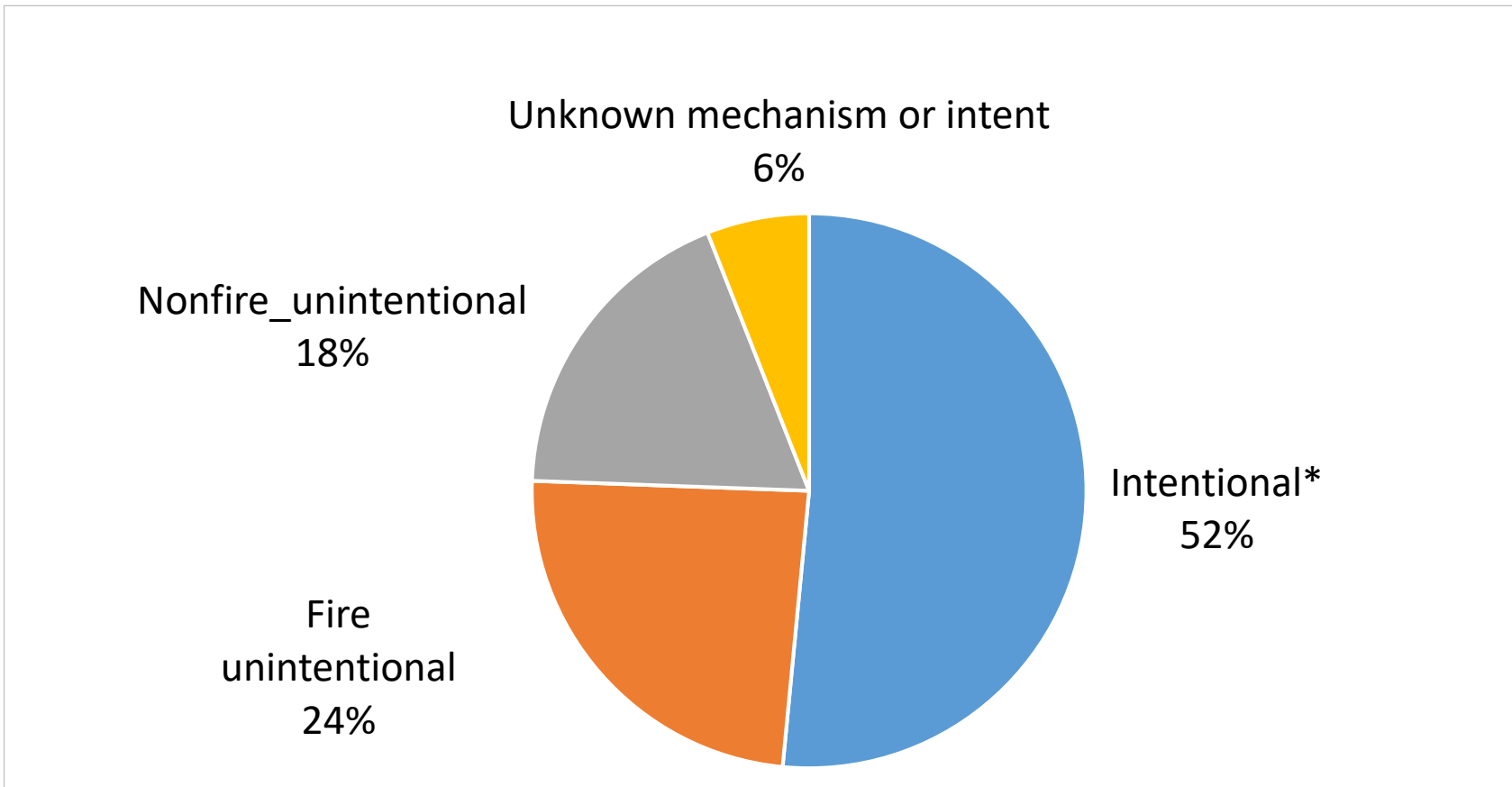
Questions?

Environmental Public Health Tracking
Mi Kyong (Meekie) Shin, Epidemiologist
trackingsupport@cdc.gov

For more information, contact CDC
1-800-CDC-INFO (232-4636)
TTY: 1-888-232-6348 www.cdc.gov

The findings and conclusions in this report are those of the authors and do not necessarily represent the official position of the Centers for Disease Control and Prevention.

Tracking Program-CO poisoning related Deaths, 2000-2014, United States



Tracking program, data source: US Death certificates from NCHS

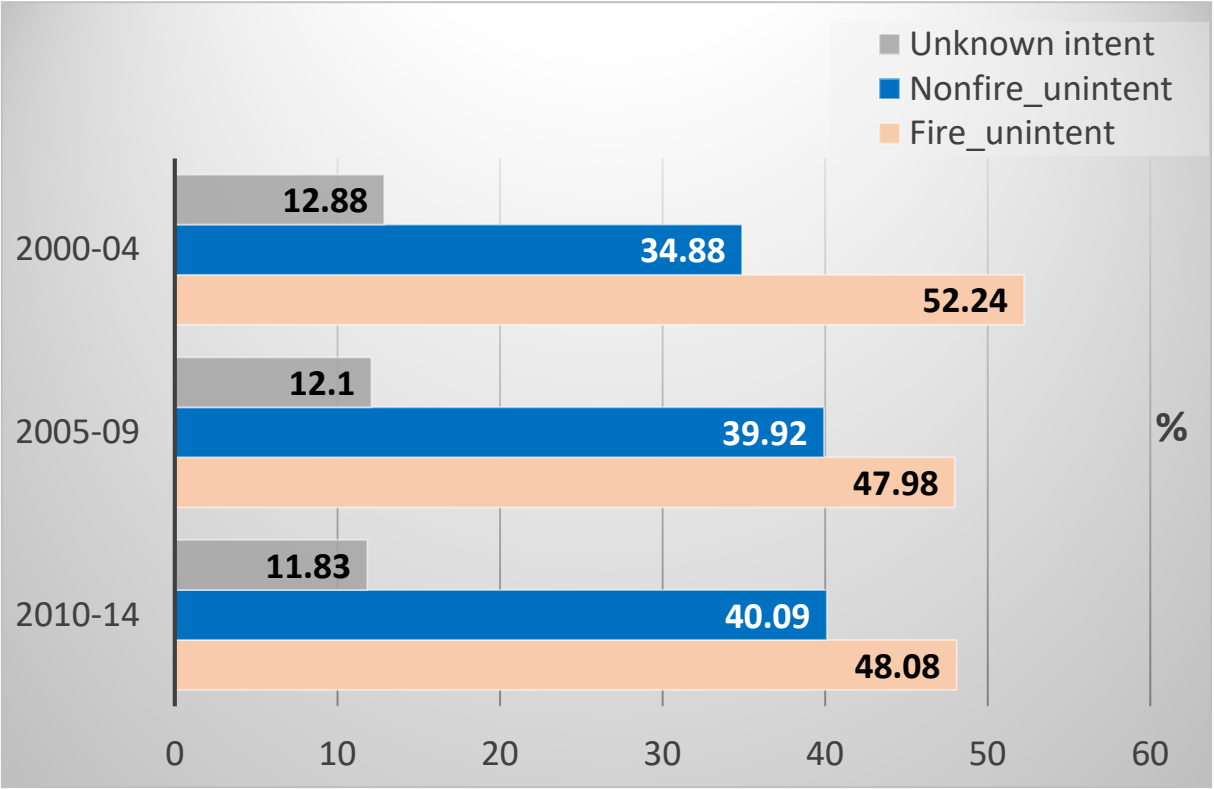
*Intentional: Any underlying or contributing causes (X60-Y09) and legal intervention and operations of war (Y35-Y36): X60-X84: Intentional self-harm, X85-Y09: Assault, Y35,Y36: Legal intervention and operations of war

Tracking Program

CO Poisoning Related Deaths, 2000-2014, United States

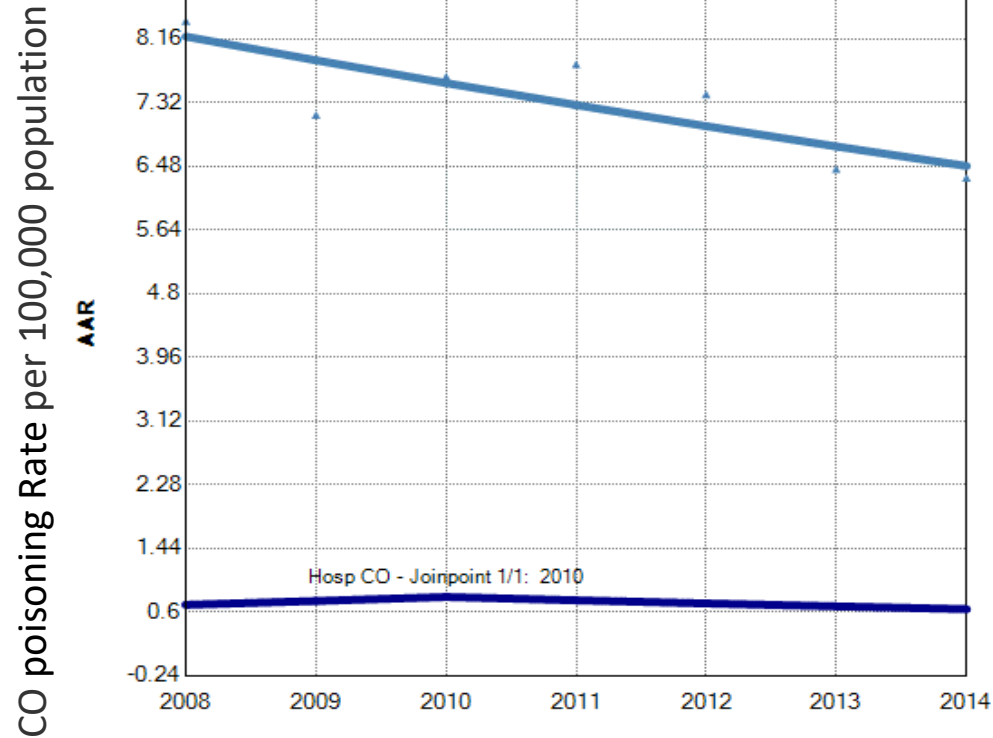
Year	Frequency	Percent
2000-04	6,399	37.6%
2005-09	5,852	34.4%
2010-14	4,759	28.0%

n=17,010



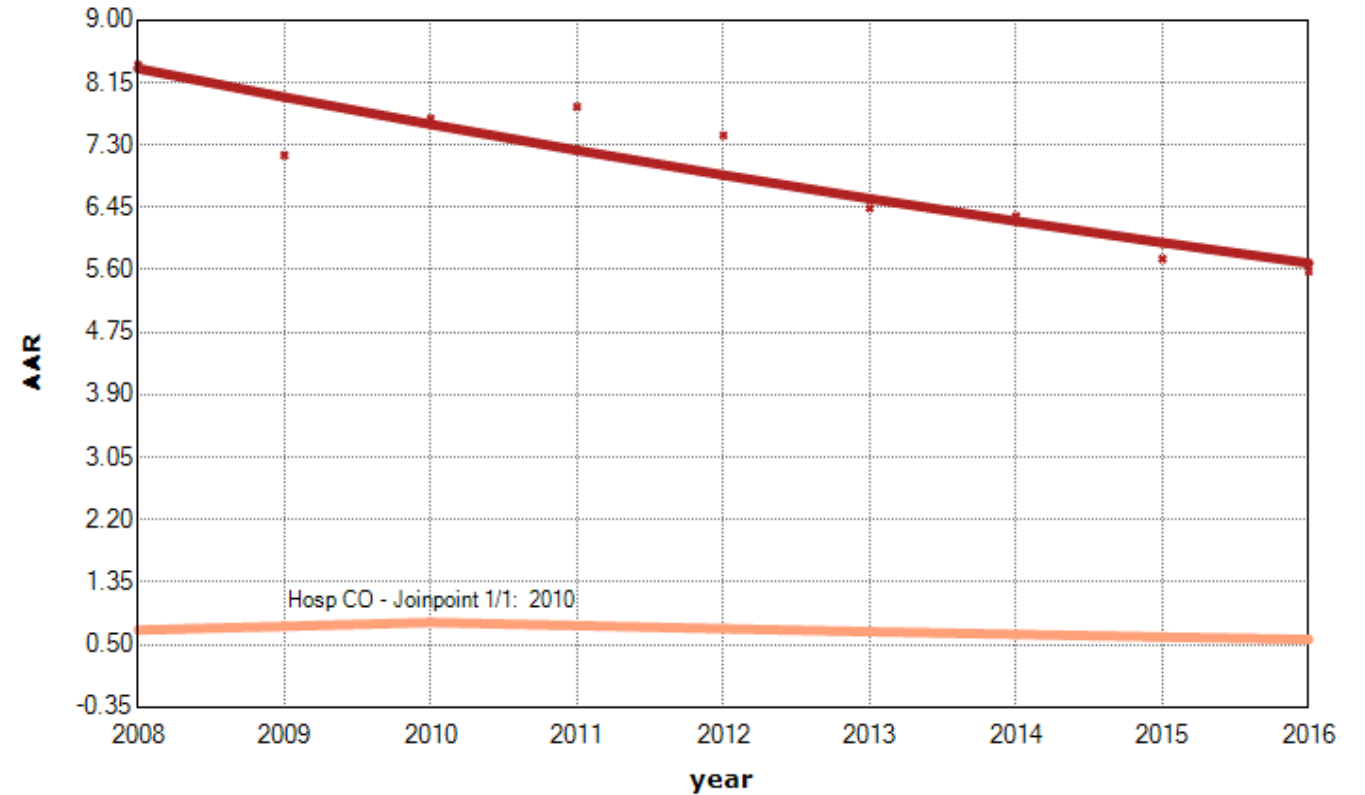
Tracking program-Age-adjusted Rate of Emergency Department Visits and Hospitalizations for CO Poisoning, 2000-2016

Multiple Joinpoint Models



▲ ED CO - 0 Joinpoints
 — 2008.0-2014.0 APC = -3.82[^]
 • Hosp CO - 1 Joinpoint
 — 2008.0-2010.0 APC = 7.16
 — 2010.0-2014.0 APC = -5.48[^]

Multiple Joinpoint Models



* ED CO - 0 Joinpoints
 — 2008.0-2016.0 APC = -4.66[^]
 * Hosp CO - 1 Joinpoint
 — 2008.0-2010.0 APC = 7.20[^]
 — 2010.0-2016.0 APC = -5.53[^]

Hospitalization data: AZ, CO, CT, FL, IA, KS, KY, ME, MN, NJ, NM, NY, OR, RI, UT, VT, WA, WI

ED data: AZ, CT, FL, IA, KY, ME, MN, NJ, NY, RI, UT, VT, WI