

1: Man-Environment Themes

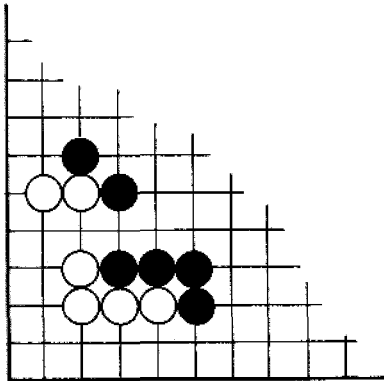
Daniel H. Carson, editor

Man-Environment Interactions: Evaluations and Applications
The State of the Art in Environmental Design Research – 1974
Daniel H. Carson, general editor

1: Man-Environment Themes

table of contents

INTRODUCTION	
Daniel H. Carson	ii
HUMAN ECOLOGY	
A. S. Boughey	1
LIMITED RESOURCES AND ECONOMIC STABILITY: CHANGING CONSTRAINTS ON ENVIRONMENTAL DESIGNERS	
Warren A. Johnson	17
SOCIAL DESIGN FOR LIMITED GROWTH	
Dennis C. Pirages	37
THE STUDY OF ENERGY FUTURES	
Earl Cook	51
DENSITY, DESIGN, AND SOCIAL ORGANIZATION	
David Cooperman	87
ENVIRONMENTAL AMENITIES AND NEW COMMUNITY GOVERNANCE: RESULTS OF A NATIONWIDE STUDY	
Raymond J. Burby, III	101
ENVIRONMENTAL DEGRADATION AND THE COLLAPSE OF THE CLASSIC MAYA	
Imre Gyuk and Robert Harrison	125
CULTURAL CHANGE AND REDEVELOPMENT: THE SOUTH WALES COALFIELD	
Shane Davies and Robin Doughty	139
GENTLE NOMADIC ENVIRONMENTS	
Ruruk Ekstrom	153
REFUGEE HOUSING FOR DEVELOPING COUNTRIES	
Frederick C. Cuny, Charles Goodspeed, Volker Hartkopf, Steven Rosen and Vijah P. Singh	167
A CONCEPT OF ENVIRONMENTAL FLEXIBILITY: WITH SPECIAL REFERENCE TO SQUATTER HOUSING	
Metee Turan	175
NOMADS: BEHAVIORAL AND PSYCHOLOGICAL ADJUSTMENTS TO SEDENTARIZATION	
Edward K. Sadalla and David Stea	191



3: Human Factors

Henry M. Parsons, editor

4: Field Applications

Gerald Davis, editor

5: Methods and Measures

Charles C. Lozar, editor

Man-Environment Interactions: Evaluations and Applications
The State of the Art in Environmental Design Research – 1974
Daniel H. Carson, general editor

AN OVERVIEW

The Environmental Design Research Association, Inc. acts as an umbrella for many individuals or groups engaged in environmental design research by providing, with its annual conferences, a forum at which researchers can interact. EDRA 5, the fifth annual conference, took place 30 May--1 Jun 1974 at the School of Architecture of the University of Wisconsin in Milwaukee. EDRA 5 was developed on the general theme of research on Man-Environment Interactions and investigators were invited to describe the state of the art in their subject area. There were five subthemes: 1) Human Ecology, 2) Limited Resources and Economic Stability, 3) Human Health and Life Change, 4) The Permanent Centralizing Environments, and 5) The Gentle Nomadic Environments. From these subthemes grew 20 major research topics of which 12 are covered by these six volumes.

The papers in these six volumes are short of a completely definitive or final statement on Man-Environment Interactions. They are the research of only 146 investigators, exhorted and cajoled by 12 editors, selected from nearly 250 contributors to the 20 seminar/workshops at EDRA 5. The papers, however, cover quite well the state of the art in environmental design research for 1974. The collection presents 12 research subjects that treat a great breadth of matter. In its breadth lay its value.

In reports on the state of an art variability is normal, especially for a nascent field searching for structure. No attempt was made to change an author's style, a variability perhaps more refreshing than damaging. Other sources are more important. Treatment of each research area does not penetrate to the same depth or reach the same frontier; some are in need of more work. This situation indicates rich opportunities for new researchers. Another source is interactions of problem and method. In some cases a method is too sophisticated for the problem; in others the problem is too complex for the method. The matching in very many cases is felicitous. Mismatching of method to problem provides opportunities for methodologists to help researchers put their efforts to better use. Withal, the careful reader will find primarily a misplaced emphasis, an occasional lapse or some honest error. It is right that honest errors, like good intentions, can pave misleading roads, but EDRA has built the accumulated beginnings to insure that reasonable precision is preserved at no expense to the spontaneity so necessary for difficult research.

Contributors and editors alike were serious, diligent and professional. For their efforts, the general editor is indebted and appreciative.

These writings cannot be left without advising the instructor that they may be used to advantage in many courses on man-environment studies.

Daniel H. Carson
Milwaukee, 1974

COVER DESIGN: Headlands at Big Sur, California and "Joseki" in GO. GO is an ancient Oriental game with an integrated collection of encounters through which each player attempts to secure the larger territory. The stones placed in opening moves are called "Joseki." Each of the covers illustrates a standard opening. But some openings show more aggressive or auspicious attacks than others.

Copyright © 1974 by Environmental Design Research Association, Inc.

All Rights Reserved
This book or any part thereof
must not be reproduced in any form
without the written permission of the publisher.

Library of Congress Catalog Card Number: 74-29343
Printed in the United States of America

3: Human Factors

4: Field Applications

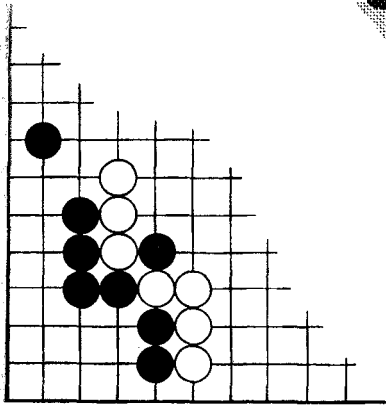
5: Methods and Measures

table of contents

WHY HUMAN FACTORS RESEARCH IN ENVIRONMENTAL DESIGN? Henry M. Parsons	1
LET'S SHED A LITTLE LIGHT Corwin A. Bennett	15
THERMAL COMFORT IN DWELLINGS Lewis F. Hanes	29
ARCHITECTURAL DESIGN AND CRIME PREVENTION Richard S. Laymon	43
THE PERFORMANCE CONCEPT AS A MODEL LINKING RESEARCH AND DESIGN Robert Wehrli	51
APPLYING A PLANNED DESIGN PROCESS AND SPECIFIC RESEARCH TO THE PLANNING OF OFFICES Gerald Davis	63
PROGRAMMING THE BUILT ENVIRONMENT: THE BEC APPROACH Donald F. Roughley and Enn E. Ots	91
RECENT FIELD APPLICATIONS AND EVALUATIONS OF BOSTI/PAK: A MENTAL HEALTH PARTICIPATORY PLANNING PROCESS Michael Brill	105
PREDICTING USER RESPONSES TO BUILDINGS Robert G. Hershberger and Robert C. Cass	117
THE APPLICATION OF HUMAN ENGINEERING IN PRODUCT DESIGN James M. Conner and Joan C. Bardagjy	135
BUILDING EVACUATION AND OTHER FIRE-SAFETY MEASURES: SOME RESEARCH RESULTS AND THEIR APPLICATION J. L. Pauls	147

METHODS AND MEASURES Charles C. Lozar	169
MEASUREMENT TECHNIQUES TOWARDS A MEASUREMENT TECHNOLOGY Charles C. Lozar	171
QUESTIONS OF SCALING TECHNIQUES ON A CONTINUUM OF UNOBTRUSIVENESS AND EFFICIENCY Edward Ostrander	193
HIGHER LEVELS OF VALIDITY Claude Winkelhake	203
THE EVALUATION OF PHYSICAL SETTINGS: TO MEASURE ATTITUDES, BEHAVIOR, OR BOTH? Arthur H. Patterson and Romedi Passini	211
MEASUREMENT AND INQUIRING SYSTEMS DESIGNED FOR ALTERNATIVE FUTURES Charles C. Lozar	221
DIRECT AND INSTRUMENTED OBSERVATIONAL TECHNIQUES: A COMPARISON Robert B. Bechtel	231
THE ENVIRONMENT-BEHAVIOR RELATIONSHIP CONSTRUED AS A SET OF CONDITIONAL PROBABILITIES Richard Chenoweth, Sue Weidemann, James Anderson and Rosemary Selby	243
MULTIDISCIPLINARY, DESIGN-INTERACTIVE EVALUATION OF LARGE-SCALE PROJECTS George L. Peterson, Joseph L. Schofer and Robert S. Gemmell	251
BART STATIONS: ENVIRONMENTAL ASSESSMENT METHODS Donald Appleyard and H. E. Abell, Jr.	273
EVALUATING RESIDENTS' SATISFACTION IN HOUSING FOR LOW AND MODERATE INCOME FAMILIES: A MULTIMETHOD APPROACH Guido Francescato, Sue Weidemann, James Anderson and Richard Chenoweth	285
THE EVALUATION OF FAMILY SATISFACTION WITH THE DESIGN OF THE STACKED MAISONETTE Robert J. Beck, Robert Rowan and Pierre Teasdale	297

edra 5



9: Multivariate Methods

Hugo Blasdel, editor

10: Computers and Architecture

Vladimir Bazjanec, editor

Man-Environment Interactions: Evaluations and Applications
The State of the Art in Environmental Design Research - 1974
Daniel H. Carson, general editor

AN OVERVIEW

The Environmental Design Research Association, Inc. acts as an umbrella for many individuals or groups engaged in environmental design research by providing, with its annual conferences, a forum at which researchers can interact. EDRA 5, the fifth annual conference, took place 30 May--1 Jun 1974 at the School of Architecture of the University of Wisconsin in Milwaukee. EDRA 5 was developed on the general theme of research on Man-Environment Interactions and investigators were invited to describe the state of the art in their subject area. There were five subthemes: 1) Human Ecology, 2) Limited Resources and Economic Stability, 3) Human Health and Life Change, 4) The Permanent Centralizing Environments, and 5) The Gentle Nomadic Environments. From these subthemes grew 20 major research topics of which 12 are covered by these six volumes.

The papers in these six volumes are short of a completely definitive or final statement on Man-Environment Interactions. They are the research of only 146 investigators, exhorted and cajoled by 12 editors, selected from nearly 250 contributors to the 20 seminar/workshops at EDRA 5. The papers, however, cover quite well the state of the art in environmental design research for 1974. The collection presents 12 research subjects that treat a great breadth of matter. In its breadth lay its value.

In reports on the state of an art variability is normal, especially for a nascent field searching for structure. No attempt was made to change an author's style, a variability perhaps more refreshing than damaging. Other sources are more important. Treatment of each research area does not penetrate to the same depth or reach the same frontier; some are in need of more work. This situation indicates rich opportunities for new researchers. Another source is interactions of problem and method. In some cases a method is too sophisticated for the problem; in others the problem is too complex for the method. The matching in very many cases is felicitous. Mismatching of method to problem provides opportunities for methodologists to help researchers put their efforts to better use. Withal, the careful reader will find primarily a misplaced emphasis, an occasional lapse or some honest error. It is right that honest errors, like good intentions, can pave misleading roads, but EDRA has built the accumulated beginnings to insure that reasonable precision is preserved at no expense to the spontaneity so necessary for difficult research.

Contributors and editors alike were serious, diligent and professional. For their efforts, the general editor is indebted and appreciative.

These writings cannot be left without advising the instructor that they may be used to advantage in many courses on man-environment studies.

Daniel H. Carson
Milwaukee, 1974

COVER DESIGN: Headlands at Big Sur, California and "Joseki" in GO. GO is an ancient Oriental game with an integrated collection of encounters through which each player attempts to secure the larger territory. The stones placed in opening moves are called "Joseki." Each of the covers illustrates a standard opening. But some openings show more aggressive or auspicious attacks than others.

9: Multivariate Methods

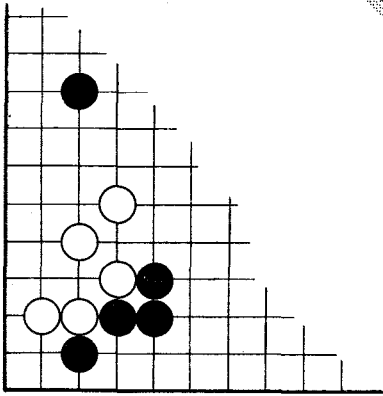
10: Computers and Architecture

table of contents

METHODS AND MEASURES: MATHEMATICAL MODELING Hugo G. Blasdel	1
PSYCHOPHYSICAL MEASUREMENT OF ENVIRONMENTAL DISTANCE Marvin J. Dainoff, Daniel K. Miskie, Cynthia Wilson and Peter Crane	3
MULTIDIMENSIONAL SCALING OF REAL AND SIMULATED ENVIRONMENTS: A RATING SCALE APPROACH WITH SOME MONTE CARLO EVALUATIONS Hugo G. Blasdel	21
AN APPROACH TO ELICIT ATTRIBUTES OF COMPLEX VISUAL ENVIRONMENTS John F. Betak, Arden C. Brummell and Paul G. Swingle	35
RESIDENTIAL MODIFICATION AS A MODE OF SELF-EXPRESSION Robert K. Mautz II and Rachel Kaplan	55
PATTERNS AND CORRELATES OF ENVIRONMENTAL DESIGN PREFERENCE John W. Lounsbury	69
A TRADEOFF APPROACH FOR ELICITING ENVIRONMENTAL PREFERENCES Tridib K. Banerjee, William C. Baer and Ira M. Robinson	77
MODELING HOUSEHOLD LOCATIONAL PREFERENCE AND ENVIRONMENT INTERACTIONS: A SCHEME FOR URBAN SIMULATION Reinhard Shian-Lung Lai	95
RELIABILITY AND VALIDITY OF SUBJECTIVE RESPONSES TO AN ARCHITECTURAL DISPLAY G. Scott Danford and Edwin P. Willems	113
CONSEQUENCES OF SOME THEORIES OF DESIGN ON COMPUTING IN ARCHITECTURE Vladimir Bazjanac	121
A SIMULATION MODEL OF MULTIDIRECTIONAL PEDESTRIAN MOVEMENT WITHIN PHYSICALLY BOUNDED ENVIRONMENTS Adrian E. Baer	139

ASSESSING AND EVALUATING THE DESIRABILITY AND SUITABILITY OF THE NATURAL ENVIRONMENT FOR HUMAN ACTIVITY OR DEVELOPMENT: A METHODOLOGY AND APPLICATION	
Elliott E. Dudnik and Wayne Schachtel	155
CASH - A COMPUTER AIDED DESIGN TOOL FOR HOUSING	
Krishna S. Mathur	177
COMPUTER APPLICATIONS IN ARCHITECTURAL PRACTICE FOR SCHOOL DESIGN	
Robin Th'ng	193
A METHODOLOGY FOR THE COMPUTER SIMULATION OF BEHAVIOR-ENVIRONMENT INTERACTIONS IN DINING HALLS	
Robert C. Lozar	211
ENERGY CONSUMPTION BUILDING PERFORMANCE MODELS	
William M. Lucas, Jr.	235

edra 5



11: Cognition and Perception

Basil Honikman, editor

12: Childhood City

Robin C. Moore, editor

Man-Environment Interactions: Evaluations and Applications
The State of the Art in Environmental Design Research - 1974
Daniel H. Carson, general editor

AN OVERVIEW

The Environmental Design Research Association, Inc. acts as an umbrella for many individuals or groups engaged in environmental design research by providing, with its annual conferences, a forum at which researchers can interact. EDRA 5, the fifth annual conference, took place 30 May--1 Jun 1974 at the School of Architecture of the University of Wisconsin in Milwaukee. EDRA 5 was developed on the general theme of research on Man-Environment Interactions and investigators were invited to describe the state of the art in their subject area. There were five subthemes: 1) Human Ecology, 2) Limited Resources and Economic Stability, 3) Human Health and Life Change, 4) The Permanent Centralizing Environments, and 5) The Gentle Nomadic Environments. From these subthemes grew 20 major research topics of which 12 are covered by these six volumes.

The papers in these six volumes are short of a completely definitive or final statement on Man-Environment Interactions. They are the research of only 146 investigators, exhorted and cajoled by 12 editors, selected from nearly 250 contributors to the 20 seminar/workshops at EDRA 5. The papers, however, cover quite well the state of the art in environmental design research for 1974. The collection presents 12 research subjects that treat a great breadth of matter. In its breadth lay its value.

In reports on the state of an art variability is normal, especially for a nascent field searching for structure. No attempt was made to change an author's style, a variability perhaps more refreshing than damaging. Other sources are more important. Treatment of each research area does not penetrate to the same depth or reach the same frontier; some are in need of more work. This situation indicates rich opportunities for new researchers. Another source is interactions of problem and method. In some cases a method is too sophisticated for the problem; in others the problem is too complex for the method. The matching in very many cases is felicitous. Mismatching of method to problem provides opportunities for methodologists to help researchers put their efforts to better use. Withal, the careful reader will find primarily a misplaced emphasis, an occasional lapse or some honest error. It is right that honest errors, like good intentions, can pave misleading roads, but EDRA has built the accumulated beginnings to insure that reasonable precision is preserved at no expense to the spontaneity so necessary for difficult research.

Contributors and editors alike were serious, diligent and professional. For their efforts, the general editor is indebted and appreciative.

These writings cannot be left without advising the instructor that they may be used to advantage in many courses on man-environment studies.

Daniel H. Carson
Milwaukee, 1974

COVER DESIGN: Headlands at Big Sur, California and "Joseki" in GO. GO is an ancient Oriental game with an integrated collection of encounters through which each player attempts to secure the larger territory. The stones placed in opening moves are called "Joseki." Each of the covers illustrates a standard opening. But some openings show more aggressive or auspicious attacks than others.

Copyright © 1974 by Environmental Design Research Association, Inc.

All Rights Reserved
This book or any part thereof
must not be reproduced in any form
without the written permission of the publisher.

Library of Congress Catalog Card Number; 74-29343
Printed in the United States of America

11: Cognition and Perception

12: Childhood City

table of contents

ENVIRONMENTAL COGNITION: ITS POTENTIAL FOR ENHANCING DESIGN AND POLICY FORMULATION Basil Honikman	1
A METHOD FOR RECOVERING COGNITIVE INFORMATION ABOUT A CITY Victoria Rivizzigno and Reginald G. Golllege	9
MATCHING OLDER PERSON'S COGNITION WITH THEIR USE OF NEIGHBORHOOD AREAS Victor A. Regnier	19
SOME PRELIMINARY FINDINGS ON THE COGNITIVE MEANING OF EXTERNAL PRIVACY IN HOUSING Elizabeth J. Harman and John F. Betak.	41
ALIENATION FROM THE URBAN ENVIRONMENT: OPERATIONALIZATION OF A CONCEPT FOR ENVIRONMENTAL RESEARCH Galen Cranz and Kenneth Christman.	57
AN EXPLORATORY ANALYSIS OF ENVIRONMENTAL CONSTRUCTS AND RESPONSES IN RELATION TO ROLE ORIENTATIONS OF ACTIVITY PARTICIPANTS David A. Sandahl	67
TOWARD A SOCIAL PSYCHOLOGY OF DESIGN P. G. Raman	87
CONCLUDING THOUGHTS AND FUTURE DIRECTIONS Basil Honikman	97

CHILDHOOD CITY: SOME ORIENTATIONS AND FOCI Robin C. Moore103
AN ASSESSMENT OF A "REDEVELOPED" SCHOOL YARD BASED ON DRAWINGS MADE BY CHILD USERS Robin C. Moore and Ann Wochiler107
PLAYGROUNDS: FOR WHOM? Marilyn Rothenberg, D. Geoffrey Hayward and Robert R. Beasley. .121	.121
PATTERNS OF CHILDREN'S SPATIAL BEHAVIOR IN A MODERATE-DENSITY HOUSING DEVELOPMENT Gary Coates and Ellen Bussard131
ANTHROPOLOGICAL ANALYSIS OF THE HOME CONCEPT: SOME CONSIDERATIONS BASED ON THE INTERPRETATIONS OF CHILDREN'S DRAWINGS Gilles F. Barbey143
CHILDREN'S CONCEPTIONS OF OPEN CLASSROOMS THROUGH USE OF SCALED MODELS Leanne G. Rivlin, Marilyn Rothenberg, Francine Justa, Allan Wallis and Frederick G. Wheeler, Jr.151
THE EFFECTS OF VARIED LEVELS OF RESOURCES AND DENSITY OF BEHAVIOR IN A DAY CARE CENTER William Rohe and Arthur H. Patterson161
DESIGNING OUT UNINTENTIONAL SCHOOL PROPERTY DAMAGE: A CHECKLIST John Zeisel.173
DESCRIPTION OF CHILDREN'S OUTDOOR ACTIVITIES IN A SUBURBAN RESIDENTIAL AREA: PRELIMINARY FINDINGS James F. Aiello, Barry Gordon and Thomas J. Farrell.187
CHILDREN'S PLAY BEHAVIOR IN A LOW-RISE, INNER-CITY HOUSING DEVELOPMENT. Clare Cooper Marcus197