



INTERDISCIPLINARY
SUMMIT

20 **BLENDING  THE BEST** 17

HOTEL DEL CORONADO
IN SAN DIEGO, CA

AUGUST 3-5, 2017

estheticacademy.org

TABLE OF CONTENTS

2017 Annual Meeting Goals	3
President’s Welcome	4
Annual Meeting Committee	5
Schedule-at-a-Glance	6
Special Events	9
Meeting Sponsors	12
Executive Council Roster	14
Grant for Research in Esthetic Dentistry	14
AAED Past Presidents and Meeting Locations	15
AAED Membership Roster	16
Conflict of Interest Disclosures	18

VERIFICATION OF PARTICIPATION FORMS

To obtain your verification of participation forms for participation in the AAED Interdisciplinary Summit, a conference evaluation and attendance form must be completed. These forms can be found in your conference registration materials. Extras are available in the registration area. AAED will mail the verification of participation forms after the conference.

SESSION DETAILS & SPEAKER BIOS

Please visit our mobile-friendly site, messageblocks.com/aaedam17 for full session descriptions and speaker bios.

ADA CERP® | Continuing Education Recognition Program

The American Academy of Esthetic Dentistry is an ADA CERP Recognized Provider. ADA CERP is a service of the American Dental Association to assist dental professionals in identifying quality providers of continuing dental education. ADA CERP does not approve or endorse individual courses or instructors, nor does it imply acceptance of credit hours by boards of dentistry.

AAED designates this activity for 15 continuing education credits.

2017 ANNUAL MEETING GOALS

- Provide improved understanding of evidence-based methods for achieving excellence in esthetic and restorative dentistry
- Provide interdisciplinary education and advanced knowledge in esthetic, endodontic, prosthodontic, periodontic, orthodontic, surgical and dental technology aspects of patient care
- Strengthen in-depth knowledge in materials selection and ethical considerations in esthetic and restorative dentistry
- Create a welcoming environment for networking and professional interaction among participants that builds on the mission of AAED and the spirit and legacy of its founders

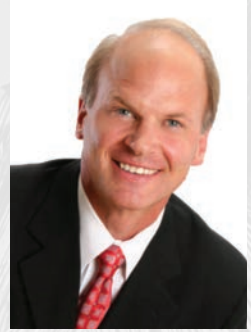
AMERICAN ACADEMY OF ESTHETIC DENTISTRY MISSION

To promote the integration of dental esthetics into the total spectrum of oral health care and provide a leadership role for the profession by defining the highest interdisciplinary clinical, scientific, artistic and ethical standards through research, publications and educational presentations.



PRESIDENT'S WELCOME

Welcome to sunny San Diego for the American Academy of Esthetic Dentistry's First Interdisciplinary Summit. AAED is the world's oldest, most prestigious esthetic dental society. As is tradition, we are gathered here with colleagues and guests to share ideas, techniques and experiences with one another.



This year, we are taking the time to acknowledge the work of interdisciplinary teams in esthetic dentistry.

I'd like to especially welcome all those who are attending this meeting as members of interdisciplinary treatment or study groups. The education and social events here in San Diego will only strengthen your group's contributions to dentistry.

This year's theme, "Blending of the Best" provides us with the opportunity to hear presentations from teams of esthetic dentists from across the world. I'm eager to hear how each of these teams collaborate on different areas in esthetic dentistry. Additionally, we have a number of world-class speakers delivering insightful solo talks on various future-focused topics related to interdisciplinary dentistry.

I'm thrilled that you've joined me for three days of exceptional education and great conversation along the beaches of San Diego. Our conference location, speaker lineup, program format and social activities promise nothing short of another outstanding annual meeting. Enjoy!

A handwritten signature in black ink, appearing to read "Richard D. Roblee". The signature is stylized and fluid.

RICHARD D. ROBLEE

President

2017 MEETING HIGHLIGHTS

- This year's meeting is the first quadrennial AAED Interdisciplinary Summit with the theme "Blending of the Best." The educational program focuses on the role of interdisciplinary teams and practices in providing outstanding results for dental patients. Teams from across the world will jointly present on key topics in interdisciplinary dentistry.
- To give our attendees time to thoroughly enjoy San Diego and the surrounding area, we have prearranged optional tours and social activities for you and your guests, including a wine tasting, golf outing and catamaran tour of the Pacific Ocean. Check availability of all at the registration desk.
- The closing reception and gala on Saturday evening will offer the perfect setting to bid farewell to another phenomenal meeting. Dress in California elegant attire and enjoy cocktails, dinner and dancing.



ANNUAL MEETING COMMITTEE

The AAED expresses sincere gratitude to the entire Annual Meeting Committee for their hard work and dedication to this event over the past year.

RICK ROBLEE, DDS, MS

President

FRANK HIGGINBOTTOM, DDS

Audio Visual Chair

RADE D. PARAVINA, DDS, MS, PHD

Program Chair

ROBERT MARGEAS, DDS

Silent Auction Chair

JEFF BRUCIA, DDS

Local Arrangements Chair

Corporate Relations Chair

2017 SCHEDULE AT-A-GLANCE

All lectures will be in didactic format to include question-and-answer sessions after each presentation.

Digital Poster Presentations will take place Thursday through Saturday during the scheduled coffee breaks in the ballroom.

EDUCATIONAL SESSIONS: Crown Room

REGISTRATION, EXHIBITS, SILENT AUCTION, DIGITAL POSTERS: Ballroom

Wednesday, August 2

3:00 – 8:00PM Registration Open

8:00 – 10:00PM After Dinner Welcome Reception | **LOCATION:** Sundeck

Thursday, August 3

7:00AM – 1:30PM Registration Open

7:00 – 7:45AM Breakfast | **LOCATION:** Ballroom

7:45 – 8:00AM Welcoming Remarks

AAED President: Rick Roblee, DDS, MS

Local Arrangements Chairman: Jeff Brucia, DDS

Program Chairman: Rade D. Paravina, DDS, MS, PhD

8:00 – 9:10AM Team Southeast: The Role of TEAM in Reconstructive Esthetic Dentistry: A Defined Algorithm for Success

Presenters: Ronald E. Goldstein, DDS; David Garber, DMD, BDS
Maurice Salama, DMD; Henry Salama, DMD and
Pinas Adar, MDT, CDT

9:15 – 9:45AM Contemporary Orthodontics: A Transaction or Transformation?

Presenter: David Sarver, DMD, MS

9:50 – 10:15AM Interdisciplinary Interactions to Enhance the Outcome of Prosthodontic Treatment

Presenter: Carlo Poggio, DDS, MSD, PhD

10:15 – 10:45AM Networking Coffee Break

10:45 – 10:55AM AAED Annual Survey Results

Presenter: Gordon J. Christensen, DDS, MSD, PhD

11:00 – 11:20AM Prospective Fellow Presentation: Lip Dynamics Revisited

Presenter: Elizabeth M. Bakeman, DDS

11:20 – 11:45AM Predicting Clinical Performance of Dental Composites Through In Vitro Assessments: Is It Possible?

Presenter: Jack Ferracane, PhD

11:45AM – 12:10PM Composite vs Ceramic: Interdisciplinary Team Protocols

Presenter: Federico Giovanni Ferraris, DDS (Italy)

12:10 – 12:55PM Team Northwest: Interdisciplinary Treatment Strategies for Alveolar Ridge Deficiencies in the Esthetic Zone

Presenters: Gregory A. Kinzer, DDS, MSD and
Jim Janakievski, DDS, MSD

Thursday, August 3 continued

1:00 – 1:30PM AAED Master Reflections of the Day
Presenter: *John C. Kois, DMD, MSD*

Open afternoon for optional activities

7:00 – 10:00PM President's Opening Reception | **LOCATION:** Windsor Lawn

Friday, August 4

7:00AM – 1:30PM Registration Open

7:00 – 7:45AM Breakfast | **LOCATION:** Ballroom

7:45 – 8:00AM Opening Remarks

Program Chairman: *Rade D. Paravina, DDS, MS, PhD*

8:00 – 8:45AM Team Southwest: Interdisciplinary Treatment of Cervical Lesions

Presenters: *Edward P. Allen, DDS, PhD and Robert Winter, DDS*

8:50 – 9:20AM Digital Approach: Predictable Outcomes in Minimally Invasive Dentistry

Presenter: *Petra Guess Gierthmühlen, DDS, Dr Med Dent, PhD (Germany)*

9:25 – 9:45AM Prospective Fellow Presentation: Use of the Natural Tooth as a Provisional Following Immediate Implant Placement

Presenter: *Robert Margeas, DDS*

9:50 – 10:20AM Vertical Hard Tissue Augmentation in the Esthetic Zone

Presenter: *Bach Le, DDS, MD*

10:20 – 11:00AM Networking Coffee Break

11:00 – 11:30AM Endodontics: Interdisciplinary State of the Art

Presenter: *John West, DDS, MSD*

11:35AM – 12:05PM The Prosthetic Revolution

Presenter: *Mauro Fradeani, MD, DDS (Italy)*

12:05 – 12:50PM Team South America: The Other Face of Esthetics: Integrating Function into Smile Design

Presenters: *Christian Coachman, CDT, DDC (Brazil)*
Marcelo Calamita, DDS, MS, PhD (Brazil)

12:55 – 1:25PM AAED Master Reflections of the Day

Presenter: *Baldwin W. Marchack, DDS*

Open afternoon and evening for optional activities

Saturday, August 5

- 7:00AM – 1:30PM** Registration Open
- 6:30 – 7:30AM** Past Presidents' Breakfast | **LOCATION:** Garden Room
- 7:00 – 7:45AM** Breakfast | **LOCATION:** Ballroom
- 7:45 – 8:00AM** Opening Remarks
Program Chairman: *Rade D. Paravina, DDS, MS, PhD*
- 8:00 – 8:30AM** Direct-Indirect Restorations: Class V Inlays and Composite Veneers
Presenter: *Newton Fahl Jr., DDS, MS (Brazil)*
- 8:35 – 9:05AM** Dental Photography for Dentist-Laboratory Communication
Presenter: *Naoki Aiba, CDT*
- 9:10 – 9:35AM** A Systematic Approach to Interdisciplinary Care
Presenter: *Jean Wu, DDS*
- 9:40 – 10:00AM** Prospective Fellow Presentation: Overview of Whitening: A Generational Change
Presenter: *Joe C. Ontiveros, DDS, MS*
- 10:05 – 10:35AM** New Ceramics, CAD/CAM and the APC-Zirconia-Bonding Concept
Presenter: *Markus Blatz, DMD, PhD*
- 10:35 – 11:05AM** Networking Coffee Break
- 11:05 – 11:30AM** Orthognathic Surgery: Past, Present and Future
Presenter: *R. Bryan Bell, MD, DDS*
- 11:35AM – 12:05PM** Less Invasive, Biological Implants
Presenter: *Bernard Touati, DDS, DSO (France)*
- 12:05 – 12:50PM** Team Northeast: Teeth, Implants & Pontics: Managing Challenges in the Esthetic Zone
Presenters: *Dennis P. Tarnow, DDS & Stephen J. Chu, DMD, MSD, CDT*
- 12:55 – 1:25PM** AAED Master Reflections of the Day
Presenter: *Frank Spear, DDS, MSD*
- 1:30 – 3:00PM** AAED Annual Members' Business Meeting & Luncheon
LOCATION: Coronet Room
- *Open afternoon for optional activities* —————
- 6:30 – 10:00PM** Reception & Closing Gala | **LOCATION:** Garden Patio & Crown Room

Have a question during a session? Don't wait until the end to ask. We have two simple ways for you to ask your questions throughout the program:

Text your questions to **419.971.2233** or **askaaed@gmail.com**
Email your questions to **askaaed@gmail.com**

SPECIAL EVENTS

To help you make the most of your Southern California experience, we have arranged optional tours and events throughout the meeting. Social events are included in your meeting registration.

ALL TOURS MEET IN HOTEL LOBBY AT THE DESIGNATED TIME.

Wednesday, August 2

GOLF OUTING

TRANSFER FROM HOTEL: 6:45am | **TEE TIME:** 8:00am

The golf outing is a rare opportunity to play at the exclusive South course at the Torrey Pines Municipal Golf Course, boasting scenic views of the Pacific Ocean. Located in La Jolla, the South course is one of the most well-known, elite golf courses in the world and is home of the 2008 and 2021 US Open Championships. Each year, the Farmers Insurance Open (a PGA Tour event) is played there.

Sponsored by



COST: \$300/person. Registration fee includes green fees and golf cart. Club rental is available for an additional fee.

AFTER DINNER WELCOME RECEPTION | 8:00 - 10:00pm

LOCATION: Sundeck

Enjoy coffee and dessert on the sun deck at the beautiful Del Coronado and catch up with old friends and meet new ones as we get ready to kick off another great meeting with our AAED family.

DRESS CODE: Resort casual

Thursday, August 3

CATAMARAN CRUISING | 1:45pm

What better way to enjoy the scenic majesty and serene brilliance of San Diego's Pacific coast than during a day on the water aboard one of the region's most unique vessels? You'll see panoramic views of the spectacular coastline, ridge line of Sunset Cliffs, views of dolphins playing in the coastal waters and much more!

COST: \$160/person. Fee includes beverages and light snacks.

PRESIDENT'S OPENING RECEPTION | 7:00 - 10:00pm

LOCATION: Windsor Lawn

Bring the entire family as President Rick Roblee opens the meeting with a lively event that everyone will enjoy!

SUGGESTED DRESS CODE: Resort casual

Friday, August 4

OPEN-AIR TROLLEY TOUR | 1:45pm

Journey through the palm-lined streets of San Diego aboard an open-air trolley, taking in sights exclusive to the region and learning a little about its history and culture from San Diego's best tour conductors.

COST: \$90. Lunch not included in ticket price.

DEFINING COMPLEX SIMPLICITY: DEMYSTIFYING WINE IN THE NAPA VALLEY | 4:00 - 4:30pm

LOCATION: Crown Room

Join Napa Valley vintner and sommelier Ryan Evans as he breaks down what makes wine special, particularly the great varietals from famed Napa Valley. Wine has a rare ability to tell stories unlike any other: an origin story of where the grapes were grown and the weather that shaped its identity; the story of the artists who allowed that expression to unfurl into its final form; and most importantly, the story of the people who drink and enjoy it. Join us to see how Ryan simplifies the making and tasting of wine so that everyone, from the casual drinker to the connoisseur, can appreciate its complexities.

COST: Complimentary

WINE TASTING | 5:00 - 7:00pm

LOCATION: Garden Patio

A night of rare wine, great food and even better company. Napa Valley vintner and sommelier Ryan Evans has curated a special pairing of exquisite food and rare, boutique wines from the Napa Valley. Spend the evening learning what makes these small, handcrafted wines unique. We will be showcasing wines that either sell out upon release or cannot be purchased in the general marketplace, offering attendees a special opportunity to taste current releases and library vintages that showcase what makes the Napa Valley one of the greatest wine-producing regions in the world.

Sponsored by



Advance ticket purchase required, currently sold out

WINE PULL

LOCATION: Ballroom

Throughout the meeting, purchase a ticket (*one per registered attendee*) for just **\$50** and be guaranteed to win a bottle of wine worth at least that much! Some lucky winners will take away wine valued at over **\$200**.

COST: \$50/ticket

Tickets may be purchased at the Registration Desk.

Saturday, August 5

RECEPTION AND CLOSING GALA | 6:30 - 10:00pm

LOCATION: Garden Patio and Crown Room

Say farewell to another extraordinary AAED meeting at Saturday night's closing event. Enjoy cocktails, dinner and dancing at this elegant California affair. Cocktails will be served from 6:30 - 7:15pm on the Garden Patio followed by a gala in the Crown Room.

SUGGESTED DRESS CODE: California elegance

SILENT AUCTION

LOCATION: Ballroom

Don't miss the AAED's 11th Annual Silent Auction, Thursday through Saturday. All of the proceeds raised through the auction will be dedicated to expanding the quality and quantity of our educational programming. Auction items will be displayed in conjunction with registration hours and during the gala, allowing attendees to view the items and place bids at their leisure. Winners will be announced after the close of the auction on Saturday evening and items will be available for check-out immediately after dinner.

HOW TO BID

Bidding is available 24/7 through the online mobile bidding platform, **GiveSmart**.

Text **AAED17** to **24700** to view and bid on auction items.

MEETING SPONSORS

AAED gratefully acknowledges the support of the following companies:

Diamond Level —————



ZIMMER BIOMET

Your progress. Our promise.™

Platinum Level —————



**BRASSELER
USA®**



**Dentsply
Sirona**



Gold Level



2016 – 2017 EXECUTIVE COUNCIL ROSTER

RICK ROBLEE, DDS, MS

President

JACINTHE M. PAQUETTE, DDS

President-Elect

JOEL BERG, DDS

Vice President

EDWARD SWIFT, DMD, MS

Secretary

CARY GOLDSTEIN, DMD

Treasurer

DENNIS TARNOW, DDS

Immediate Past President

ROBERT R. WINTER, DDS

Second Past President

KENNETH A. MALAMENT, DDS, MSCD

Director

JEFF BRUCIA, DDS

Director

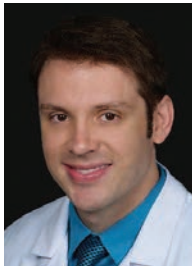
STEPHEN J. CHU, DMD, MSD, CDT

Director

JOSEPH M. JACKSON, CAE

Executive Director, Ex-Officio

AAED GRANT FOR RESEARCH IN ESTHETIC DENTISTRY



2016 RECIPIENT

Marcelo Durski, DDS, MDS, PhD

We congratulate Dr. Marcelo Durski, Assistant Professor in the Department of General Dentistry and Oral Medicine at the University of Louisville School of Dentistry as the recipient of this grant for his research entitled, "Final Shade Evaluation of Anterior E.max Restorations on Discolored Teeth." Meet Dr. Durski and view his digital poster during this year's meeting.

RESEARCH SUMMARY

A significant challenge in dentistry is the restoration of only one anterior tooth instead of restoring the adjacent teeth as well. When the tooth presents with discoloration, due to intrinsic or extrinsic factors, the management and the choice of a ceramic for a restoration will depend on the severity of discoloration.

The final restoration incorporates a very individualized combination of underlying tooth color, resin cement and the ceramic translucency/opacity/shade. Some studies have evaluated the interaction of thickness for high translucencies and low translucencies pressed ceramic, but no study has assessed the CAD/CAM system's medium opacity, specifically developed for discolored teeth. The ceramic used in this research was the IPS e.max CAD, light translucency, medium opacity and high translucency.

The goal of this research is to create an applicable clinical numbering table that could help clinicians when deciding which material, opacity and thickness will give the final restoration the expected shade needed to mimic the adjacent tooth.

AAED PAST PRESIDENTS & MEETING LOCATIONS

1975	Ronald E. Goldstein, DDS	Chicago, IL
1976	* Charles L. Pincus, DDS	Las Vegas, NV
1977	* Charles L. Pincus, DDS	Colorado Springs, CO
1978	Ronald E. Goldstein, DDS	Colorado Springs, CO
1979	Raymond M. Contino, DDS	Colorado Springs, CO
1980	Gordon J. Christensen, DDS, MSD, PhD	White Sulphur Springs, WV
1981	Carl E. Rieder, DDS	San Francisco, CA
1982	Peter K. Dawson, DOS	Boca Raton, FL
1983	Jack D. Preston, DDS	Maui, HI
1984	David S. Shelby, DDS	Bermuda
1985	Henry N. Yamada, DDS, MEd, MBA	Sun Valley, ID
1986	Noah Chivian, DDS	Colorado Springs, CO
1987	Niles F. Guichet, DDS	Laguna Niguel, CA
1988	* Lloyd L. Miller, DMD	Cambridge, MA
1989	* Leonard Abrams, DDS	Pebble Beach, CA
1990	Stephen K. Bergen, DDS, MSD	Hershey, PA
1991	Ralph V. O'Connor, DDS, MSD	Santa Barbara, CA
1992	George A. Murrell, DDS	Santa Fe, NM
1993	Robert P. Berger, CDT, FNBC	Los Angeles, CA
1994	Cherilyn G. Sheets, DDS	Maui, HI
1995	Reuben R. Roach, DDS	Palm Beach, FL
1996	* Donald E. Arens, DDS, MSD	Aspen, CO
1997	David A. Garber, DMD, BDS	Cancun, Mexico
1998	Edwin S. Rosenberg, BDS, DMD, HDD	Philadelphia, PA
1999	* Vincent G. Kokich, DDS, MSD	Whistler, BC, Canada
2000	Mark J. Friedman, DDS	Kauai, HI
2001	* Daniel Y. Sullivan, DDS	Washington, DC
2002	Frank M. Spear, DDS, MSD	Beaver Creek, CO
2003	Ronald I. Maitland, DMD	Dana Point, CA
2004	Harald O. Heymann, DDS, MEd	Banff, Alberta, Canada
2005	Baldwin W. Marchack, DDS, MBA	Kohala Coast, HI
2006	Gerard J. Chiche, DDS	Grand Cayman, Cayman Islands
2007	Edward P. Allen, DDS, PhD	Colorado Springs, CO
2008	John C. Kois, DMD, MSD	Laguna Niguel, CA
2009	John D. West, DDS, MSD	Las Vegas, NV
2010	Vincent Celenza, DMD	Maui, HI
2011	Louis F. Rose, DDS, MD	San Juan, PR
2012	Dan Nathanson, DMD, MSD	Naples, FL
2013	Richard J. Simonsen, DDS, MS	Washington, DC
2014	Linda Niessen, DMD, MPH, MPP	Santa Barbara, CA
2015	Robert R. Winter, DDS	Telluride, CO
2016	Dennis Tarnow, DDS	Dana Point, CA

*denotes a deceased member

AAED MEMBERSHIP ROSTER

Associate Members

Alexandre Aalam, DDS Los Angeles, CA
 Harry F. Albers, DDS Santa Rosa, CA
 Sibel Antonson, DDS, PhD, MBA Ft. Lauderdale, FL
 Elizabeth M. Bakeman, DDS.....Grand Rapids, MI
 Joyce Bassett, DDS Scottsdale, AZ
 Keith A. Boenning, DDS Towson, MD
 John Burgess, DDS, MS Birmingham, AL
 Paul L. Child, Jr., DMD, CDT Draper, UT
 Donald Clem, DDS Fullerton, CA
 Christian Coachman, CDT, DDS São Paulo, Brazil
 Jennifer Cote, BSc., DDS Dip.
 Periodont MRCD (C) Burnaby, Canada
 Josef Diemer, DDS..... Meckenbeuren, Germany
 David Digiallorenzo, DMD Collegeville, PA
 Daniel Edelhoff, DMD, CDT, PhD Munich, Germany
 Nicolas Elian, DDS Englewood Cliffs, NJ
 Newton Fahl Jr., DDS, MS Curitiba, Brazil
 Hugh Flax, DDS Atlanta, GA
 James Fondriest, DDS Lake Forest, IL
 John T. Green, DDS Dayton, OH
 David Guichet, DDS Orange, CA
 Susan Hollar, DDS Arlington, TX
 Jim Janakievski, DDS, MSD Tacoma, WA
 Steven R. Jefferies, MS, DDS, PhD Media, PA
 Douglas J. Knight, DDS, MSD Tacoma, WA
 Dean E. Kois, DMD, MSD Seattle, WA
 Alina Krivitsky Aalam, DDS Los Angeles, CA
 So-Ran Kwon, DDS, MS, PhD Iowa City, IA
 Robert E Lamb, DDS, MSD Foster City, CA
 Sonia Leziy, DDS North Vancouver, Canada
 Ramin Mahallati, DDS Beverly Hills, CA
 Robert Margeas, DDS Des Moines, IA
 Brahm Miller, DDS, MSc. Dipl Pros,
 FCDS(BC), FRCD(C) North Vancouver, Canada
 Yasushi Mitarai, DDS, PhD Fukuoka, Japan
 Ricardo Mitrani, DDS, MSD Mexico City, Mexico
 Tal Morr, DMD, MSD Miami, FL
 Marc L. Nevinis, DMD Boston, MA
 Joe C. Ontiveros, DDS, MS Houston, TX
 Kirk Pasquinelli, DDS San Francisco, CA
 Michael Pikos, DDS Palm Harbor, FL
 Claudio Pinho, DDS Brasília, Brazil
 Peter Pizzi, CDT, MDT Staten Island, NY
 George Priest, DMD Hilton Head Island, SC
 Christopher Ramsey, DMD Jupiter, FL
 Stephen Rimer, BDS Boca Raton, FL

Robert G. Ritter, DMD Jupiter, FL
 Andre Ritter, DDS, MS Chapel Hill, NC
 Matthew Roberts, CDT Idaho Falls, ID
 Sergio Rubinstein, DDS Skokie, IL
 Hanae Saito, DDS, MS, CCRC Baltimore, MD
 Todd R. Schoenbaum, DDS Los Angeles, CA
 Michael R. Sesemann, DDS Omaha, NE
 Christian F. Stappert, DDS, MS, PhD Zurich, Switzerland
 Alan V. Sulikowski, DMD Cambridge, MA
 Dean Vafiadis, DDS New York, NY
 Farhad F. Vahidi, DMD, MSD New York, NY
 Daniel Ward, DDS Columbus, OH
 Takashi Watanabe, DDS Iwaki City, Japan
 Jon Yoshimura, DDS Honolulu, HI
 Gilbert Young, CDT Plano, TX
 Homayoun Zadeh, DDS, PhD Woodland Hills, CA

Fellow Members

Pinhas Adar MDT, CDT Atlanta, GA
 Michael G. Arvystas DMD.....New York, NY
 Joel Berg DDS, MS..... Seattle, WA
 Rainer Bergmann DMD, Dr. med. dent. . . Palm Desert, CA
 Michael Block DMD Metairie, LA
 Jeff J. Brucia DDS San Francisco, CA
 L. Stephen Buchanan DDS..... Santa Barbara, CA
 Vincent Celenza DMD.....New York, NY
 Gerard J. Chiche DDS Augusta, GA
 Stephen Chu DMD, MSD, CDT New York, NY
 Theodore P. Croll DDS Doylestown, PA
 Fereidoun Daftary DDS, MScD Beverly Hills, CA
 James R. Dunn DDS Auburn, CA
 Lisa B. Emirzian DMD East Longmeadow, MA
 Mauro Fradeani MD, DDS Pesaro, Italy
 Jaime A. Gil MD, DDS, PhD Bilbao, Spain
 Cary E. Goldstein DMD Atlanta, GA
 Joseph R. Greenberg DMD Villanova, PA
 Thomas Han DDS, MS Los Angeles, CA
 Frank Higginbottom DDS..... Dallas, TX
 Mark N. Hochman DDS New York, NY
 Paul S. Hoyt BA, DDS San Francisco, CA
 Gerhard Iglhaut DDS, PhD Memmingen, Germany
 Stuart L. Isler DMD Denville, NJ
 John Kanca III BA, DMD Middlebury, CT
 Hiroshi Kawazu DDS, DDSc..... Tokyo, Japan
 Gregory A. Kinzer DDS, MSD Seattle, WA
 John C. Kois DMD, MSD Seattle, WA

Vincent O. Kokich DMD, MSDTacoma, WA
 Fritz R. Kopp DMD.....Zurich, Switzerland
 Brian P. LeSage DDS..... Beverly Hills, CA
 Kenneth A. Malament DDS, MScDBoston, MA
 Edward A. McLaren DDS Los Angeles, CA
 Michael Moscovitch DDS Montreal, Canada
 Kevin Murphy DDS, MS..... Baltimore, MD
 Linda C. Niessen DMD, MPH, MPPDavie, FL
 W. Peter Nordland DMD, MS La Jolla, CA
 Jacinthe M. Paquette DDS Newport Beach, CA
 Rade D. Paravina DDS, MS, PhD Houston, TX
 Laurence R. Rifkin DDS..... Beverly Hills, CA
 Robert G. Rifkin DDS..... Beverly Hills, CA
 Rick D. Roblee DDS, MS Fayetteville, AR
 Giuseppe Romeo CDT Torino, Italy
 Maurice A. Salama DMDAtlanta, GA
 Henry Salama DMDLinwood, NJ
 David M. Sarver DMD, MS..... Vestavia Hills, AL
 Dennis A. Shanelec DDS..... Santa Barbara, CA
 Itzhak Shoher DMD, MSc Herzelia, Israel
 Stephen R. Snow DDS..... Danville, CA
 Neil L. Starr DDS Washington, DC
 Edward J. Swift Jr., DMD, MS..... Chapel Hill, NC
 Dennis P. Tarnow, DDSNew York, NY
 Jeffery R. Thomas, DDS New Bern, NC
 Bernard Touati, DDS, DSOParis, France
 Brian S. Vence, DDS Oakbrook Terrace, IL
 Greg J. Vigoren, DDS Newport Beach, CA
 Barry D. Wagenberg, DMD..... Livingston, NJ
 John D. West, DDS, MSDTacoma, WA
 Robert R. Winter, DDSScottsdale, AZ
 Peter Wohrle, DMD, MMSc..... Newport Beach, CA
 Aki Yoshida, RDT Weston, MA
 Jonathan Zamzok, DMD.....New York, NY
 Carlo Zappala, MD, DDS..... Bergamo, Italy
 Pascal Zyman, DDS.....Paris, France

Life Fellow Members

Edward P. Allen, DDS, PhD Dallas, TX
 Nasser Barghi, DDS San Antonio, TX
 William Becker, DDS, MSD Tucson, AZ
 Stephen F. Bergen, DDS, MSD West Orange, NJ
 Robert P. Berger, CDT, FNBC San Diego, CA
 Noah Chivian, DDS West Orange, NJ
 Rella Christensen, RDH, PhD Provo, UT
 Peter E. Dawson, DDSSaint Petersburg, FL

Jimmy B. Eubank, DDSPlano, TX
 Mark J. Friedman, DDS Encino, CA
 Philippe G. Gallon, DDSCrans-Montana, Switzerland
 David A. Garber, DMD, BDSAtlanta, GA
 Ronald E. Goldstein, DDSAtlanta, GA
 Harold O. Heymann, DDS, MedChapel Hill, NC
 Jeffrey S. Ingber, DMDPhiladelphia, PA
 Richard H. Klein, DDS Tahuya, WA
 Masahiro Kuwata, CDT Cedar Knolls, NJ
 Arlen D. Lackey, DDS Pacific Grove, CA
 Ronald I. Maitland, DMDNew York, NY
 Baldwin W. Marchack, DDS, MBAPasadena, CA
 Gerry Mariacher, CDT Houston, TX
 Preston D. Miller, DDSGermantown, TN
 Charles J. Miller, DDS Pittsburgh, PA
 Bud Mopper, MS, DDS Chicago, IL
 George A. Murrell, DDS Rolling Hills, CA
 Dan Nathanson, DMD, MSDBoston, MA
 Ralph V. O'Connor, DDS Lakewood, WA
 Ake L. Parmliid, LDS..... Goteborg, Sweden
 Steven R. Potashnick, DDS Chicago, IL
 Jack D. Preston, DDSTempleton, CA
 Carl E. Rieder, DDSMurrieta, CA
 Reuben R. Roach, DDSSt. Petersburg, FL
 Louis F. Rose, DDS, MDPhiladelphia, PA
 Edwin S. Rosenberg, BDS, HDD, DMD Nerberth, PA
 Cheryllyn G. Sheets, DDS Newport Beach, CA
 Richard J. Simonsen, DDS, MSScottsdale, AZ
 Frank M. Spear, DDS Seattle, WA
 Robert C. Sproull, DDS El Paso, TX
 David R. Steiner, DDS, MSD Gig Harbor, WA
 Henry H. Takei, DDS, MS Los Angeles, CA
 Asami Tanaka, CDT, NMD Skokie, IL
 Walter F. Turbyfill, DMDWest Columbia, SC
 Leo C. Ward, DMD Sherman Oaks, CA
 Arnold S. Weisgold, DDS University Park, FL
 Bernard Weissman, CDTNew York, NY
 Henry N. Yamada, DDS, Med, MBA Los Angeles, CA

Life Fellow Emeritus Members

Gordon J. Christensen, DDS, MSD, PhD Provo, UT
 Niles F. Guichet, DDSOrange, CA
 Ernest W. Scheerer, DDS Honolulu, HI
 Harold M. Shavell, DDS..... Northbrook, IL

CONFLICT OF INTEREST

The educational forum will comply with appropriate disclosure policies as set forth by the American Dental Association's code of ethics and professional standards. The AAED speakers will verbally disclose any material, financial or other relationships that pose a potential conflict of interest. Such disclosures may also be included in written form within this program. Speakers will also disclose any unapproved use of products or devices that they will be discussing. Disclosure requirements are not intended to imply any impropriety, but rather to inform the audience that they exist.

The following speakers have indicated no potential conflict(s) of interest exist:

Naoki Aiba, CDT Elizabeth Bakeman, DDS Marcelo Calamita, DDS, MD, PhD Christian Coachman, CDT, DDC Federico Ferraris, DDS Greggory Kinzer, DDS, MsD John Kois, DMD, MsD	Bach Le, DDS, MD Robert Margeas, DDS Carlo Poggio, DDS, MsD, PhD David A Sarver, DMD, MS Dennis Tarnow, DDS Robert R. Winter, DDS
---	--

The following speakers have disclosed these relationships which may pose a conflict of interest:

PINAS ADAR, MDT, CDT

Company: Adar Dental Laboratory

Relationship: Owner / Stockholder

EDWARD P. ALLEN, DDS, PHD

Company: BioHorizons, Hu-Friedy, PerioSciences

Product: AlloDerm, AO ProVantage

Relationship: Consultant, Author, Medical Advisory Board, Lecturer, Education / Research / Grant, Honorarium

R. BRYAN BELL, DDS, MD

Company: Stryker

Relationship: Consultant

MARKUS BLATZ, DMD, PHD

Company: Dentsply, Ivoclar Vivadent, Zirkozahn, Henry Schein, 3M ESPE, GL, Shofu, Nobel Biocare

Relationship: Research Grant Support, Honorarium

GORDON CHRISTENSEN, DDS, MSD, PHD

Company: Practical Clinical Courses

Product: Dental Education, Seminars, Video Production and Hands on Courses

Relationship: Author, Owner / Stockholder, Instructor, CEO

STEPHEN CHU, DMD, MSD, CDT

Company: BioHorizons, Southern

Product: Implants

Relationship: Consultant

NEWTON FAHL, DDS, MS

Company: Tokuyama Dental

Product: Estelite Omega

Relationship: Consultant

JACK FERRACANE, PHD

Company: Blue Light Analytics

Product: Light Curing Unit Measuring Devices

Relationship: Advisory Board (No Monetary Remuneration)

MAURO FRADEANI, DDS, MD

Company: Brasseler / Komet, Dentsply, Ivoclar, KaVo, Nike Instruments, Nobel Biocare, 3M ESPE, Zirkozahn

Relationship: Consultant

DAVID GARBER, DMD, BDS

Company: Nobel Biocare, Implant Innovations, Inc., Keystone Dental, Dentsply, Brasseler USA, Zimmer, Imaging Sciences, BioHorizons, 3M, Bisco, Biora, Siemens, Premier, GC America, Ivoclar, Den-Mat, Shofu, Vident, ProDentec, Panasonic, Minolta, Kodak, Sony, Zeiss, Hu-Friedy, National Dental Network, Global Surgical, Materialise, Biolase, Belmont, Consult Pro, Stoma, XCPT, Convergent Dental, Titan Instruments, Heraeus Kulzer, Cosmedent, LED Dental, BTI, Osteohealth, Partners in Synergy™, DentalXP, Ritter Dental, Carestream and DentalMaster

Relationship: Consultant, Investor, Lecturer

PETRA GUESS GIERTHMUEHLEN, DDS, DR MED DENT, PHD

Company: Vita Zahnju, Ivoclar Vivadent, Zirkozahn

Relationship: Education / Research / Grant

RONALD GOLDSTEIN, DDS

Company: Nobel Biocare, Implant Innovations, Inc., Keystone Dental, Dentsply, Brasseler USA, Zimmer, Imaging Sciences, BioHorizons, 3M, Bisco, Biora, Siemens, Premier, GC America, Ivoclar, Den-Mat, Shofu, Vident, ProDentec, Panasonic, Minolta, Kodak, Sony, Zeiss, Hu-Friedy, National Dental Network, Global Surgical, Materialise, Biolase, Belmont, Consult Pro, Stoma, XCPT, Convergent Dental, Titan Instruments, Heraeus Kulzer, Cosmedent, LED Dental, BTI, Osteohealth, Partners in Synergy™, DentalXP, Ritter Dental, Carestream and DentalMaster

Relationship: Consultant, Investor, Lecturer

JIM JANAKIEVSKI, DDS, MSD

Company: Geustloch

Product: Graft Material

Relationship: Education / Research / Grant, Honorarium

CONFLICT OF INTEREST *continued*

JOE ONTIVEROS, DDS, MS

Company: Philips

Product: Zoom

Relationship: Consultant

MAURICE SALAMA, DMD

Company: Nobel Biocare, Implant Innovations, Inc., Keystone Dental, Dentsply, Brasseler USA, Zimmer, Imaging Sciences, BioHorizons, 3M, Bisco, Biora, Siemens, Premier, GC America, Ivoclar, Den-Mat, Shofu, Vident, ProDentec, Panasonic, Minolta, Kodak, Sony, Zeiss, Hu-Friedy, National Dental Network, Global Surgical, Materialise, Biolase, Belmont, Consult Pro, Stoma, XCPT, Convergent Dental, Titan Instruments, Heraeus Kulzer, Cosmedent, LED Dental, BTI, Osteohealth, Partners in Synergy™, DentalXP, Ritter Dental, Carestream and DentalMaster

Relationship: Consultant, Investor, Lecturer

HENRY SALAMA, DMD

Company: Nobel Biocare, Implant Innovations, Inc., Keystone Dental, Dentsply, Brasseler USA, Zimmer, Imaging Sciences, BioHorizons, 3M, Bisco, Biora, Siemens, Premier, GC America, Ivoclar, Den-Mat, Shofu, Vident, ProDentec, Panasonic, Minolta, Kodak, Sony, Zeiss, Hu-Friedy, National Dental Network, Global Surgical, Materialise, Biolase, Belmont, Consult Pro, Stoma, XCPT, Convergent Dental, Titan Instruments, Heraeus Kulzer, Cosmedent, LED Dental, BTI, Osteohealth, Partners in Synergy™, DentalXP, Ritter Dental, Carestream and DentalMaster

Relationship: Consultant, Investor, Lecturer

FRANK SPEAR, DDS, MSD

Company: Spear Education

Relationship: Owner / Stockholder, Instructor

BERNARD TOUATI, DDS, DSO

Company: Nobel Biocare

Product: Implants

Relationship: Co-Inventor

JOHN WEST, DDS, MSD

Company: ProTaper, Waveone, Calamus Technologies

Relationship: Inventor

JEAN WU, DDS

Company: Perimetrics, LLC

Product: Perimeter

Relationship: Education / Research / Grant



Progressive Minds Meet Here

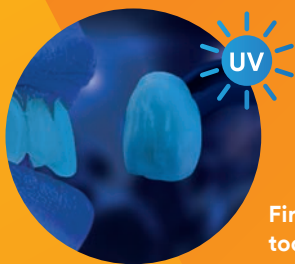
Powered By Knowledge

Transcend traditional learning with Zimmer Biomet Dental's new continuing education portfolio, designed to fit varying learning styles and lifestyles of the modern clinician and lab professional. Whether your interest is in emerging digital dentistry innovations or the latest techniques in restorative and implant dentistry with industry leading regenerative solutions, our commitment is to you and your patients. Your progress. Our promise.®

Join the movement that is defining the future of dental education. Together, let's do more. Call 1-800-342-5454 or visit zimmerbiometdental.com/education.

Unless otherwise indicated, as referenced herein, all trademarks are the property of Zimmer Biomet; and all products are manufactured by one or more of the dental subsidiaries of Zimmer Biomet Holdings, Inc., and distributed and marketed by Zimmer Biomet Dental (and, in the case of distribution and marketing, its authorized marketing partners). For additional product information, please refer to the individual product labeling or instructions for use. Product clearance and availability may be limited to certain countries/regions. This material is intended for clinicians only and does not comprise medical advice or recommendations. This material may not be copied or reprinted without the express written consent of Zimmer Biomet Dental. ZB0317 REV A 06/17 ©2017 Zimmer Biomet. All rights reserved.

 **ZIMMER BIOMET**
Your progress. Our promise.®



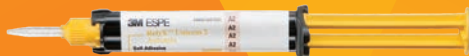
First zirconia with inherent
toothlike fluorescence.

3M™ Lava™ Esthetic Esthetic Fluorescent Full-Contour Zirconia

Discover the next level of full-contour esthetics.

Ask your lab for 3M™ Lava™ Esthetic Fluorescent Full-Contour Zirconia, and you will experience a cubic zirconia that unites a high strength of 800 MPa* with the esthetics of glass ceramics. Equipped with a unique shading technology, Lava Esthetic zirconia offers a true shade match to VITA classical shades and toothlike fluorescence for natural esthetics. To simplify the cementation of Lava Esthetic zirconia full-contour crowns and bridges,** use 3M™ RelyX™ 2 Unicem Cement and get esthetics plus high bond strength with fewer steps.

www.3M.com/LavaEsthetic



*3-point bending strength according to ISO 6872:2015; qualified for Type II, Class 4; indications: crowns, bridges with one pontic between two crowns, inlays, onlays and veneers.
**Please refer to the Instructions for Use for details.

3M, Lava and RelyX are trademarks of 3M or 3M Deutschland GmbH. Used under license in Canada. All other trademarks are not trademarks of 3M. © 3M 2017. All rights reserved.

You make it **e.max**[®]
because it matters.

e.max[®]
IPS



When Juan Rego's daughter Natalie wanted a new smile for her wedding day, he chose IPS e.max to make her perfect day even more beautiful.

Today, more dental professionals choose IPS e.max, the world's leading all-ceramic – for their families and for themselves. With over 100 million e.max restorations placed, it has become the unchallenged leader around the world for dentists who prefer to treat their patients like part of the family. **Make it e.max, because every patient matters.**

Share your story at
makeitemax.com/smile For a chance to be featured in
an IPS e.max advertisement!

  ivoclarvivadent.com

*Ivoclar Vivadent global usage data Photo Courtesy of Bryan Miller
For more information, call us at 1-800-533-6822 in the U.S., 1-800-263-8182 in Canada.
© 2015 Ivoclar Vivadent, Inc. Ivoclar Vivadent, IPS e.max is a registered trademark of Ivoclar Vivadent, Inc.


ivoclar
vivadent[®]
passion vision innovation

SHRINKAGE

Shrinkage
0.85%



Beautiful II LS (Low-Shrink) composite provides dentists with the means to reduce polymerization shrinkage and shrinkage stress while creating predictable and functional aesthetics.

- Low volumetric shrinkage (0.85%) and shrinkage stress (2.72 MPa)
- Great strength and high wear resistance
- Tooth-like aesthetics with natural fluorescence and chameleon effect
- Polishes in an instant
- Award-winning handling
- Sustained fluoride release/recharge with bioactive Giomer chemistry



Beautiful® II LS

Product Sample
Scan QR Code



SHOFU



Shofu Dental Corporation | San Marcos, CA

SNBILS-0417

Visit www.shofu.com | Call 800.827.4638

OUR WORLD IS NOT FLAT

Neither is the anatomy of your implant patients



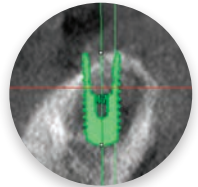
Astra Tech Implant System® OsseoSpeed® Profile EV – for sloped ridge situations

Your world is already full of clinical challenges so why work harder because of conventional thinking? Instead of augmenting sloped ridges to accommodate flat-top implants, it's time to discover a simpler solution by using an implant that follows the bone. Because sloped-ridge situations call for anatomically designed sloped implants.

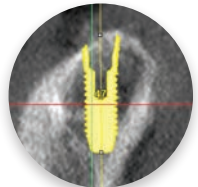
It's time to challenge conventional thinking



www.profiledentalimplants.com



Conventional vs innovative approach





43RD ANNUAL MEETING

**THE STARS ARE ALIGNED:
SHAPING THE FUTURE OF EXCELLENCE
IN ESTHETICS**

SAVE  DATE

**TERRANEA RESORT
RANCHOS PALOS VERDES,
CALIFORNIA**

AUGUST 2-4, 2018

estheticacademy.org