

final program

AAED 36TH ANNUAL MEETING

AUGUST 2-5, 2011 THE RITZ-CARLTON
SAN JUAN, PUERTO RICO

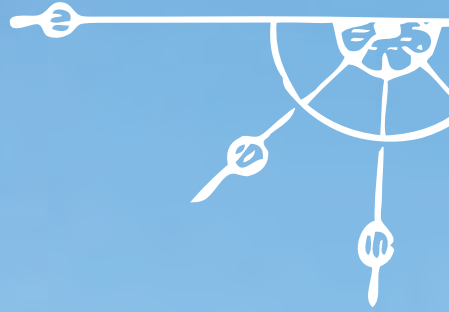




Table of Contents

President's Welcome	4
36th Annual Meeting Committee	4
Meeting Sponsors	5
2011 AAED Executive Council	6
Schedule-at-a-Glance	10
Special Events and Social Activities	12
Presentation Abstracts	16
AAED Membership Roster	34
AAED Past Presidents/Annual Meeting Locations	36
AAED 37th Annual Meeting	39

Recommended Attire

All educational sessions will be business/resort casual – ties and sport coats are discouraged. Meeting rooms tend to be cool, so please dress accordingly during the day. Casual beach attire is requested for the President's Welcome Reception, and the Closing Dinner is resort elegant.

ADA CER.P® | Continuing Education Recognition Program

The American Academy of Esthetic Dentistry is an ADA CER.P Recognized Provider. ADA CER.P is a service of the American Dental Association to assist dental professionals in identifying quality providers of continuing dental education. ADA CER.P does not approve or endorse individual courses or instructors, nor does it imply acceptance of credit hours by boards of dentistry.

AAED designates this activity for 14.25 continuing education credits.

Concerns or complaints about a CE provider may be directed to the provider or to ADA CER.P at www.ada.org/cerp.

All educational presentations will be delivered in a lecture style with a Q&A period.

Verification of Participation Forms

To obtain your verification of participation form for participation in the AAED 36th Annual Meeting, a conference evaluation (completed online) and attendance form (picked up at registration) must be completed. Links to speaker and overall evaluations will be emailed to you and extra attendance forms will be made available at the meeting, as well as sent to you post-conference. AAED will email all verification of participation forms after the conference.

AMERICAN ACADEMY OF ESTHETIC DENTISTRY MISSION

To promote the integration of dental esthetics into the total spectrum of oral health care and provide a leadership role for the profession by defining the highest interdisciplinary clinical, scientific, artistic and ethical standards through research, publications and educational presentations.

2011 ANNUAL MEETING GOALS

- ☞ Highlight evidence-based methods for achieving excellence in esthetic and restorative dentistry
- ☞ Provide interdisciplinary education and advance knowledge in esthetic, endodontic, prosthodontic, periodontic, orthodontic, surgical and materials aspects of restorative dentistry
- ☞ Highlight in-depth knowledge in materials selection and ethical considerations in esthetic and restorative dentistry
- ☞ Create an environment for networking and professional interaction among participants



PRESIDENT'S WELCOME

It is my distinct pleasure to welcome you to beautiful San Juan, Puerto Rico. I'm excited you've chosen to join us at the luxurious Ritz-Carlton, San Juan as we celebrate the 36th anniversary of the American Academy of Esthetic Dentistry.



Our Annual Meetings have a long history of excellence, and this year's event promises to exceed expectations once again. Program chair Dr. David Garber has brought together an outstanding line-up of world-class speakers for the educational program. Once again, Dr. Richard Roblee is loaning us his expertise as our A/V chair to ensure all runs smoothly. Our local arrangements chairs, Dr. Stuart Isler, Dr. Cary Goldstein and my lovely wife Claire Rose, have worked tirelessly to ensure that the resort and the evening social events will exceed your expectations.

I want to extend a sincere thanks to our sponsors, whose commitment to the esthetic dentistry community has helped make this event possible. It is through their continued generosity that we are able to provide quality educational programs, thereby sharing our mission with the entire dental profession.

From our opening welcome reception on the beach to the closing reception and dinner event, you'll have the opportunity to experience the natural beauty of Puerto Rico during our social events. Both the educational and networking opportunities taking place during this meeting enhance our roles as "ambassadors of information" – allowing us to share our collective expertise through our practices, our research and our places in the world of academia.

The American Academy of Esthetic Dentistry remains committed to providing a leadership role at the forefront of the dental community. I am confident you will leave Puerto Rico feeling newly energized, inspired and enriched from our activities over the next few days!

Louis F. Rose, DDS, MD

2011 Annual Meeting Committee

AAED expresses sincere gratitude to the entire AAED 36th Annual Meeting Committee for their hard work and dedication to this event over the past year.



Program Chair
David Garber,
DMD, BDS



Local Arrangements
Stuart Isler, DMD



Local Arrangements
Cary Goldstein, DMD



Local Arrangements
Claire Rose



A/V Chair
Richard D. Roblee,
DDS, MS



Silent Auction Chair
Brian Vencee, DDS

MEETING SPONSORS

The American Academy of Esthetic Dentistry sincerely thanks the following companies for their support and generosity. The assistance that these leading dental vendor partners provide helps make this meeting a great success.

Diamond Sponsors



Biomet 3i
4555 Riverside Drive
Palm Beach Gardens, FL 33410
800.443.8166
www.biomet3i.com



Dentsply Tulsa Dental Specialties
5100 E. Skelly Drive, Suite 300
Tulsa, OK 74135
800.662.1202
www.tulsadental.com



Nobel Biocare
22715 Savi Ranch Parkway
Yorba Linda, CA 92887
800.993.8100
www.nobelbiocare.com

Platinum Sponsors



3M ESPE Dental Products
3M Center,
Building 275-2SE-03
St. Paul, MN 55144
800.634.2249
www.3MESPE.com



Astra Tech
590 Lincoln Street
Waltham, MA 02451
800.531.3481
www.astratechdental.com

Gold Sponsors



BioHorizons
2300 Riverchase Center
Birmingham, AL 35244
205.967.7880
www.biohorizons.com



Bisco Dental Products
1100 W. Irving Park Road
Schaumburg, IL 60193
800.247.3368
www.bisco.com



Brasseler USA
One Brasseler Boulevard
Savannah, GA 31419
800.841.4522
www.brasselerusa.com



Global Surgical
3610 Tree Court Industrial Boulevard
St. Louis, MO 63122
800.767.8726
www.globalsurgical.com



Heraeus
300 Heraeus Way
South Bend, IN 46614
800.431.1785
www.heraeusdental.com



Hu-Friedy
3232 N. Rockwell Street
Chicago, IL 60618
800.HU.FRIEDY
www.hu-friedy.com



Keystone Dental
144 Middlesex Turnpike
Burlington, MA 01803
866.902.9272
www.keystonedental.com



Panadent
580 S. Rancho Avenue
Colton, CA 92324
800.368.9777
www.panadent.com



Shofu Dental Corporation
1225 Stone Drive
San Marcos, CA 92078
760.736.3277
www.shofu.com



2011 - 2012 AAED Executive Council

PRESIDENT	<i>Louis F. Rose, DDS, MD</i>
PRESIDENT-ELECT	<i>Dan Nathanson, DMD, MSD</i>
VICE PRESIDENT	<i>Richard Simonsen, DDS, MS</i>
SECRETARY	<i>Robert R. Winter, DDS</i>
TREASURER	<i>Linda C. Niessen, DMD, MPH, MPP</i>
IMMEDIATE PAST PRESIDENT	<i>Vincent Celenza, DMD</i>
SECOND PAST PRESIDENT	<i>John D. West, DDS, MSD</i>
DIRECTORS	<i>Dennis P. Tarnow, DDS</i>
.....	<i>Richard D. Roblee, DDS, MS</i>
.....	<i>Jacinthe M. Paquette, DDS</i>
EXECUTIVE DIRECTOR	<i>Joseph M. Jackson, CAE</i>

ATLANTIS™

– the freedom of unlimited possibilities

Visit our booth
to learn more.

Abutments as individual as your patients

Available for all major implant systems and in your choice of titanium, gold-shaded titanium and four shades of zirconia, Atlantis™ patient-specific CAD/CAM abutments help to eliminate the need for inventory management of stock components and simplify the restorative procedure.

Atlantis™ Abutments are comprised of a unique combination of four key features, known as the Atlantis BioDesign Matrix™. Together, these features work to support soft tissue management for ideal functional and esthetic results.

Just take an implant-level impression, send it to your laboratory and ask for Atlantis today.

Atlantis BioDesign Matrix™



Atlantis VAD™

– designed from the final tooth shape and the individual patient anatomy

Natural Shape™

– shape and emergence profile based on individual patient anatomy

Soft-tissue Adapti™


– optimal support for soft tissue sculpturing and adaptation to the finished crown

Custom Connect™

– strong and stable fit – customized connection for all major implant systems

ASTRATECH
DENTAL
Get inspired

ASTRA
ASTRA TECH

 A company in the
AstraZeneca Group

5th Annual Silent Auction

We are excited to announce that AAED is hosting our 5th Annual Silent Auction at this year's Annual Meeting. Serving as a mechanism for raising funds to benefit AAED's educational activities, we encourage everyone to participate and help us make this event a great success.

Auction items will be displayed over the course of the meeting, allowing attendees to view the items and place their bids. The successful auction recipients will be announced during the Closing Dinner Friday evening. Auction items include vacation packages, artwork and photographs, wine collections, golf outings and numerous educational programs.

Your support of this event will allow AAED to enhance our educational programming endeavors!



Heraeus

You've trusted
Gluma® Desensitizer for years

Now try Gluma PowerGel! —a must for dentists & hygienists

- Gel consistency for greater control and accuracy
- No-drip formula, so it stays where you place it
- Green color indicator for easy visual placement and rinse-clean capability



Call 1-877-258-5937 for
a special introductory offer!

Gluma® is a registered trademark of Heraeus Kulzer GmbH
©2011 Heraeus Kulzer, 300 Heraeus Way, South Bend, IN 46614
www.heraeusdentalusa.com



Want Beautiful Restorations?

Try BellaTek™!



INTRODUCING

BellaTek™

Aesthetic ABC's Of Dentistry™

Premium Digital Dentistry Solutions Providing Aesthetic Precision For Beautiful Restorations



Abutments: Designed And Milled For Aesthetic Restorations

Bars: Precision Milled For Durable And Aesthetic Patient Restorations



Copings: Predictable And Precise Restorations For Beautiful Patient Smiles



BellaTek™ Provides Patients One Solution At A Time



Scan With Your Smartphone!

In order to scan QR codes, your mobile device must have a QR code reader installed.



Join Us



Follow Us



Watch Us

Aesthetic ABC's Of Dentistry, BellaTek and Providing Solutions - One Patient At A Time and design are trademarks of BIOMET 3i LLC. BIOMET 3i and design are trademarks of BIOMET, Inc. ©2011 BIOMET 3i LLC. All rights reserved.

BIOMET 3i™

PROVIDING SOLUTIONS - ONE PATIENT AT A TIME™

For Aesthetic Precision With BellaTek™, Contact Your Local BIOMET 3i Sales Representative Today!

In the USA: 1-888-800-8045,

Outside The USA: +1-561-776-6700

Or Visit Us Online At www.biomet3i.com

SCHEDULE-AT-A-GLANCE

Tuesday, August 2, 2011

12:00 PM	Golf Outing – Rio Mar Ocean Golf Course
4:00-5:00 PM	JERD Editorial Board Meeting – The Board Room
4:00-8:00 PM	Registration Open – The Ritz-Carlton Ballroom Foyer
7:00-10:00 PM	President's Welcome Reception – Caracoles on the Beach

Wednesday, August 3, 2011

7:00 AM-1:00 PM	Registration Open – The Ritz-Carlton Ballroom Foyer
7:00-7:30 AM	Continental Breakfast – Vista Mar Terrace
7:00-11:00 AM	Spouse/Companion Breakfast – Mares Restaurant
Afternoon	Open Afternoon
Evening	Open Evening

Wednesday: Day One Scientific Program – The Ritz-Carlton Ballroom

7:30-7:45 AM	Opening Remarks
7:45-8:35 AM	"Compleat" Dentofacial Esthetics and Direct Esthetic Bonding <i>Cláudio Pinho, DDS and Rogerio Zambonato, DDS, MS</i>
8:35-9:00 AM	Crown: The Full Coverage Restoration <i>Markus B. Blatz, DMD, PhD</i>
9:00-9:25 AM	Indirect Ceramic Veneers <i>Pascal Magne, DMD, PhD</i>
9:25-9:40 AM	Interactive Question & Answer Session <i>Moderator: Edward Swift, DMD, MS</i>
9:40-10:10 AM	Networking Coffee Break
10:10-11:00 AM	Bioceramic Technology in Endodontics <i>Dennis Brave, DDS; Kenneth Koch, DMD; and Ali Nasseh, DDS, MMSc</i>
11:00-11:25 AM	The 30-Second Laser Laminate Veneer Removal <i>Glen Van As, BSc, DMD</i>
11:25-11:50 AM	The Future of Lasers in Periodontal Therapy: Science, Hype or Snake Oil <i>I. Stephen Brown, DDS</i>
11:50 AM-12:05 PM	Interactive Question & Answer Session <i>Moderator: Dennis Tarnow, DDS</i>
12:05-12:40 PM	Porcelain-Fused-to-Metal vs. All-Ceramic Restorations: AAED Survey Results <i>Gordon Christensen, DDS, MSD, PhD</i>
12:40-1:00 PM	Closing Remarks
1:00 PM	Meeting Adjourns

Thursday, August 4, 2011

7:00 AM-1:00 PM	Registration Open – The Ritz-Carlton Ballroom Foyer
7:00-7:30 AM	Continental Breakfast – Vista Mar Terrace
7:00-11:00 AM	Spouse/Companion Breakfast – Mares Restaurant
1:00 PM	AAED Member Business Meeting – The Plantation Ballroom
Afternoon	Open Afternoon
Evening	Open Evening

Thursday: Day Two Scientific Program – The Ritz-Carlton Ballroom

7:30-7:45 AM	Opening Remarks
7:45-8:10 AM	Digital Dentistry – Beyond Imagination <i>Lee Culp, CDT</i>
8:10-8:35 AM	The Esthetically/Periodontally Compromised Tooth #8 <i>Rodolfo Gianserra, DMD</i>
8:35-9:00 AM	CAD/CAM Anterior Restorations: One and Two Visit Protocols <i>Dean Vafiadis, DDS</i>
9:00-9:25 AM	Precision Industrial Milling of IPS e.max <i>Mike Girard, RDT</i>

9:25-9:50 AM	The Fixed Dental Prostheses – Relevant Tomorrow? <i>Lyndon Cooper, DDS, PhD</i>
9:50-10:05 AM	Interactive Question & Answer Session <i>Moderator: John Kois, DMD, MSD</i>
10:05-10:35 AM	Networking Coffee Break
10:35-11:00 AM	The Implant-Supported Central Incisor – A Single Tooth Restoration <i>Nigel Saynor, BDS</i>
11:00-11:25 AM	Achieving Superior Results with Immediate Implant Placement & Immediate Restoration: A CAD/CAM Approach <i>Harold Baumgarten, DMD</i>
11:25-11:50 AM	Platform Switching: Concepts and Cosmetic Advantages <i>Richard Lazzara, DMD, MScD</i>
11:50 AM-12:15 PM	The Tissue Integrated Abutment <i>Myron Nevins, DDS</i>
12:15-12:40 PM	The Effect of a Stable Conical Connection and a Minimally Invasive Procedure on Midfacial Soft Tissue Levels After Tooth Extraction <i>Paul Weigl, DDS</i>
12:40-1:00 PM	Interactive Question & Answer Session <i>Moderator: Henry Salama, DMD</i>
1:00 PM	Closing Remarks Meeting Adjourns

Friday, August 5, 2011

7:00 AM-1:00 PM	Registration Open – The Ritz-Carlton Ballroom Foyer
7:00-7:30 AM	Continental Breakfast – Vista Mar Terrace
7:00-11:00 AM	Spouse/Companion Breakfast – Mares Restaurant
Afternoon	Open Afternoon
6:30-7:15 PM	Reception – The Ritz-Carlton Ballroom Foyer
7:15-10:30 PM	Closing Dinner – The Ritz-Carlton Ballroom

Friday: Day Three Scientific Program – The Ritz-Carlton Ballroom

7:30-7:45 AM	Opening Remarks
7:45-8:10 AM	New Digital Paradigms to Achieve Optimized Anterior Esthetics: 3-D Planning of Implants and Abutments <i>Scott Ganz, DMD</i>
8:10-8:35 AM	Extraction Site Management #8 Site: Synergy of Hard and Soft Tissue Grafting <i>Michael Pikos, DDS</i>
8:35-9:00 AM	Autotransplantation of Premolars for the Replacement of Traumatized Maxillary Incisors <i>Jim Janakievski, DDS</i>
9:00-9:15 AM	Interactive Question & Answer Session <i>Moderator: Gregg Kinzer, DDS, MSD</i>
9:15-9:40 AM	The Relevance of Tissue Form, Color and Thickness on Anterior Implant Esthetics <i>Stephen Chu, DMD, MSD, CDT</i>
9:40-10:05 AM	Tissue Augmentation in Esthetic Therapy <i>Maurice Salama, DMD</i>
10:05-10:35 AM	Networking Coffee Break
10:35-11:00 AM	Creating Labial Bone for Immediate Implant Placement: A Minimally Invasive Approach Utilizing Orthodontic Therapy in the Esthetic Zone <i>Takashhi Watanabe, DDS</i>
11:00-11:15 AM	Interactive Question & Answer Session <i>Moderator: Linda Niessen, DMD, MPH, MPP</i>
11:15-11:40 AM	The Anterior Composite Challenge: Playing with Light and Shadows <i>Pascal Zyman, DDS</i>
11:40 AM-12:25 PM	Ceramic Wars in 3D: The Return of the Ceramist <i>Ed McLaren, DDS</i>
12:25-12:45 PM	Interactive Question & Answer Session <i>Moderators: Gerard Chiche, DDS and David Garber, DMD, BDS</i>
12:45 PM	Closing Remarks Meeting Adjourns

SPECIAL EVENTS & SOCIAL ACTIVITIES

TUESDAY, AUGUST 2

President's Welcome Reception 8 7:00-10:00 PM 8 Caracoles on the Beach

We will open this year's meeting with a party on the beach to welcome members and guests of the Academy. Don't miss this opportunity to reconnect with old friends and meet new guests while enjoying breathtaking ocean views and traditional Puerto Rican cuisine. Suggested dress code: casual beach attire.

WEDNESDAY, AUGUST 3 & THURSDAY, AUGUST 4

Wednesday & Thursday Evenings 8 Open

Wednesday and Thursday evenings are completely open evenings. See the accompanying area dining guide for excellent suggestions.

FRIDAY, AUGUST 5

Reception and Closing Dinner 8 6:30-10:00 PM 8 The Ritz-Carlton Ballroom

Say farewell to another phenomenal AAED meeting at Friday night's closing event. Enjoy cocktails, dinner and dancing at this elegant and lush affair. Cocktails will be served from 6:30-7:00 PM in the foyer, and dinner will begin shortly after in the ballroom. Suggested dress code: elegant resort attire (no tuxedos necessary!)

SPOUSE AND COMPANION ACTIVITIES

Spouse and Companion Breakfast 8 7:00-11:00 AM 8 Mares Restaurant

On Wednesday, Thursday and Friday, registered spouses and children are invited to a special Spouse and Companion Breakfast in the Mares Restaurant. A delicious continental breakfast will be provided, though guests may upgrade to a full hot buffet for a nominal charge.

Yoga Classes 8 The Beach

Yoga classes will be offered on the beach Wednesday and Friday mornings. Details will accompany your registration materials at check-in.

GSI, our preferred tour provider, will be on-site to assist with tour bookings. From snorkeling to a rainforest tour to shopping in Old San Juan, there is something for everyone to enjoy.



achieve tissue level
attachment

Laser-Lok[®] dental implants

The only dental implants proven to:

- inhibit epithelial downgrowth
- attract a physical connective tissue attachment (unlike Sharpey fibers)
- preserve coronal level bone long-term



Customer Care: 1.888.246.8338



scan the QR code or visit
www.biohorizons.com

BIOHORIZONS[®]
SCIENCE • INNOVATION • SERVICE

SPMP10130 REV B MAY 2011

Receive 1 FREE XTS[®] Composite Instrument
With Your Purchase of Any 3,
AAED PROMO OFFER: August 2-5, 2011

Exclusive AlTiN coating provided for **increased lubricity** with a hard, smooth surface which **resists sticking and scratching.**

Distinctive black finish enhances the contrast between instrument, tooth and composite for **superior visibility.**



Visit us online at WWW.HU-FRIEDY.COM

©2011 Hu-Friedy Mfg. Co., LLC. All rights reserved. Hu-Friedy, the Hu-Friedy oval logo and XTS are trademarks of Hu-Friedy Mfg. Co., LLC. Certain restrictions apply. Please call your representative for further details.

How the best perform

Hu-Friedy[®]

Experience peace of mind.

Rely on quality-assured and long-lasting restorations.

Select from a full range of high-quality biocompatible solutions.

Access tools for effective patient communication.



IPS e.max® CAD Crown by NobelProcera

It's called NobelProcera. A single system that lets you provide your patients with individualized prosthetic solutions for every indication. Gain the peace of mind that comes with complete coverage including extensive warranty, quality assurance and material certification. Prescribe a wide selection of individualized restorations, all in biocompatible materials, that yield a

consistent fit and natural-looking esthetics. As a pioneer in CAD/CAM dentistry, NobelProcera uses innovative digital technology and centralized precision milling for tooth- and implant-based copings to full-arch bridges and implant bars. Partner with Nobel Biocare and make a real and lasting difference to the well-being of your patients. **Their smile, your skill, our solutions.**

nobelbiocare.com



Nobel Biocare USA, LLC. 22715 Savi Ranch Parkway, Yorba Linda, CA 92887; Phone 714 282 4800; Toll free 800 322 5001; Technical services 888 725 7100; Fax 714 282 9023

Nobel Biocare Canada, Inc. 9133 Leslie Street, Unit 100, Richmond Hill, ON L4B 4N1; Phone 905 762 3500; Toll free 800 939 9394; Fax 800 900 4243

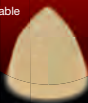
© Nobel Biocare Services AG, 2011. All rights reserved. Nobel Biocare, the Nobel Biocare logotype and all other trademarks are, if nothing else is stated or is evident from the context in a certain case, trademarks of Nobel Biocare. Disclaimer: Some products may not be regulatory cleared/released for sale in all markets. Please contact the local Nobel Biocare sales office for current product assortment and availability. IPS e.max® is a trademark of Ivoclar Vivadent AG

FINALLY, AN INJECTABLE HYBRID RESTORATIVE FOR ALL INDICATIONS

BEAUTIFIL Flow Plus

**F00
Zero Flow**

Stackable



**F03
Low Flow**

Self-leveling



- Indicated in classes I, II, III, IV & V
- Physical properties rival hybrids
- Stackable & sculptable; stays put
- Self-polishing "leveling-effect"
- High radiopacity, beyond enamel

Visit www.shofu.com or call 800.827.4638

**TRIAL OFFER \$99.95
A \$160.00 VALUE!**



Shofu Dental Corporation • San Marcos, CA

For 35 years, Brasseler USA has set the standard for excellence in dental instrumentation.



BRASSLER USA
DENTAL INSTRUMENTATION
BY YOUR SIDE IN DENTISTRY

PRESENTATIONS



**CLÁUDIO PINHO, DDS AND
ROGERIO ZAMBONATO, DDS, MS**

Dr. Pinho is one of the professionals that has become quite renowned in the area of aesthetic dentistry in Brazil in the beginning of this century. He graduated in Dentistry at the School of Dentistry of Araçatuba –

UNESP after completing his specialization in Restorative Dentistry, having the chance to work with Dr. Newton Fabl Jr. He was then promoted, working as an Assistant Professor for five years, until 2004. As a result of his pro activity in his area, natural curiosity and desire for knowledge, he became a member of the Brazilian Society of Aesthetic Dentistry (BSAD), serving as its President from 2008 to 2009. He has a private office and performs teaching activities in the area of aesthetic dentistry in Brasília - D.F.

Dr. Zambonato's connection with dentistry comes from the cradle, as he is the son of José

Alberto de Souza Freitas, renowned Brazilian dentist. After completing his training in Brazil, he traveled to be the US to engage with both Northwestern University in Chicago, Illinois and Baylor University in Dallas, Texas. Dr. Zambonato returned to Brazil in 1999 to begin his private practice.



MARKUS B. BLATZ, DMD, PHD

Dr. Blatz is Professor and Chair, Department of Preventive and Restorative Sciences, University of Pennsylvania SDM, Philadelphia, Pennsylvania. He received his DMD, PhD and Certificate in Prosthodontics/Perioprosthodontics from Freiburg University, Germany. Board-certified (German Board of Prosthodontics) and member of numerous dental societies/ editorial boards, he has received multiple research and teaching awards.

WEDNESDAY, AUGUST 3, 2011

7:45-8:35 AM

"Compleat" Dentofacial Esthetics and Direct Esthetic Bonding

Cláudio Pinho, DDS and Rogerio Zambonato, DDS, MS

Understanding and mastering the facial, gingival and dental analysis has become extremely important for current esthetic practice. The esthetic-functional principles for correct diagnosis and treatment planning will be presented, aiming to achieve harmony of the smile. A clinical detailed working protocol will be shown by clinical cases. The step-by-step procedures will demonstrate how to achieve predictable facial, gingival and dental changes, with a multidisciplinary approach.

8:35-9:00 AM

Crown: The Full Coverage Restoration

Markus B. Blatz, DMD, PhD

This presentation will discuss material options for anterior full-coverage restorations. Successful clinical integration of modern ceramic materials requires proper treatment planning based on individual needs, prerequisites and amount of supporting tooth structure, as well as laboratory and clinical handling parameters (fabrication/preparation/cementation) that recognize material properties based on scientific evidence.

9:00-9:25 AM

Indirect Ceramic Veneers

Pascal Magne, DMD, PhD

This presentation will review the most relevant clinical advances related to bonded porcelain restorations in the anterior dentition. Diagnostic approach, tooth preparation and immediate dentin sealing techniques as well as essential steps in the delivery procedure will be presented.



PASCAL MAGNE, DMD, PHD

Dr. Magne is an Associate Professor with tenure and the Don and Sybil Harrington Foundation Professor of Esthetic Dentistry in the Division of Restorative Sciences, University of Southern California, Herman Ostrow School of Dentistry of USC, Los Angeles, California.

Dr. Magne graduated from the University of Geneva School of Dental Medicine, Switzerland, in 1989 with a Med. Dent. He obtained his Doctorate in 1992 and his PhD degree in 2002.

He received postgraduate training in fixed prosthodontics and occlusion, operative dentistry and endodontics at the University of Geneva School of Dental Medicine and was a lecturer at the same university beginning in 1989 and until 1997. From 1997 to 1999, he was a Visiting Associate Professor at the Minnesota Dental Research Center for Biomaterials and Biomechanics, University of Minnesota, School of Dentistry. After concluding two years of research, Dr. Magne returned to the University of Geneva School of Dental Medicine and assumed the position of Senior Lecturer in the Division of Fixed Prosthodontics and Occlusion until his departure for USCSD in February 2004.



PRESENTATIONS



DENNIS BRAVE, DDS

A Diplomate of the American Board of Endodontics and a member of the College of Diplomates, Dr. Brave received his DDS degree from the Baltimore College of Dental Surgery, University of Maryland and his Certificate in Endodontics from the University of Pennsylvania School of Dental Medicine. Dr. Brave is a co-founder of Real World Endo.



KENNETH KOCH, DMD

Dr. Koch received both his DMD and Certificate in Endodontics from the University of Pennsylvania School of Dental Medicine. He is the founder and past Director of the new program in postdoctoral endodontics at the Harvard School of Dental Medicine. Dr. Koch is a co-founder of Real World Endo.



ALI NASSEH, DDS, MMSC

Dr. Nasseh received his Masters in Medical Sciences degree and Certificate in Endodontics from the Harvard School of Dental Medicine in 1997. He received his DDS degree in 1994 from Northwestern University Dental School. He maintains a private endodontic practice in Boston, Massachusetts and holds a staff position at the Harvard postdoctoral endodontic program. He is the Clinical Director of Real World Endo.

WEDNESDAY, AUGUST 3, 2011 (CONTINUED)

10:10-11:00 AM

Bioceramic Technology in Endodontics

Dennis Brave, DDS; Kenneth Koch, DMD; and Ali Nasseh, DDS, MMSc

This presentation will introduce the use of bioceramic technology in endodontics. Part I will concentrate on the unique properties and the science of bioceramics, while Part II will feature a discussion of its clinical applications. Both surgical and non-surgical techniques will be discussed.

1. Participants will be introduced to the unique physical properties of bioceramics.
2. Predictable periapical surgery can become part of an overall treatment plan.
3. A case will be made for the existence of an Endo-Restorative Continuum.



11:00-11:25 AM

The 30-Second Laser Laminate Veneer Removal

Glen Van As, BSc, DMD

In this presentation the attendees will see how porcelain veneers and in some cases, porcelain crowns, can be removed quickly, efficiently, safely and with minimal effect on the preparations with an Erbium YAG laser. A discussion on the mechanism of action and the merits of when this procedure could be utilized for all porcelain restorations will be discussed. An overview of the uniqueness of certain laser procedures for the dental office will also be broached during the lecture.

11:25-11:50 AM

The Future of Lasers in Periodontal Therapy: Science, Hype or Snake Oil

I. Stephen Brown, DDS

Controversy surrounds lasers in periodontal therapy. Limited research suggests lasers provide alternatives to traditional periodontal surgery. Properly applied, lasers produce less bleeding, swelling and discomfort. Regeneration of periodontal tissues is the gold standard for measuring treatment effectiveness. Evidence is emerging that lasers provide an enhanced method for achieving this elusive goal.



GLEN VAN AS, BSC, DMD

Dr. Van As is an expert both in the utilization of the dental operating microscope for clinical dentistry and in the utilization of multiple wavelengths of hard and soft tissue lasers. In the last 13 years, he has lectured nationally and internationally 350 times on both subjects. He has obtained standard and advanced proficiency from the Academy of Laser Dentistry and was distinguished with the Leon Goldman award for worldwide clinical excellence in the field of laser dentistry in 2006. He is the Clinic Director of the International Center of Laser Education (ICLE). In addition he is a founding member of the Academy of Microscope Enhanced Dentistry and a former President of the group. He acts as a consultant for several companies and reviews articles for PPAD and Dentaltown.



I. STEPHEN BROWN, DDS

Dr. Brown is Professor of Periodontics, University of Pennsylvania and Temple University, Director, Implant Division, Einstein Medical Center. Board-certified in Periodontology and a Fellow, American and International College of Dentists. In private practice, he served on the Board of Directors of the AAP, as the President of the Philadelphia and Pennsylvania Societies of Periodontics and for the Delaware Valley Academy of Osseointegration.

PRESENTATIONS



**GORDON CHRISTENSEN, DDS,
MSD, PHD**

Dr. Christensen is Founder and Director of Practical Clinical Courses (PCC) in Utah, an international continuing education organization providing courses and videos for all dental professionals. Dr. Christensen has presented over 45,000 hours of continuing education throughout the world and has published many articles and books. Dr. Christensen's degrees include DDS, University of Southern California; MSD, University of Washington; PhD, University of Denver; an honorary Doctor of Science from Utah State University; and an honorary Doctor of Dental Education and Research from Utah Valley University. Early in his career, Dr. Christensen helped initiate the University of Kentucky and University of Colorado dental schools and taught at the University of Washington. Dr. Christensen is a practicing prosthodontist in Provo, Utah.

WEDNESDAY, AUGUST 3, 2011 (CONTINUED)

12:05-12:40 PM

Porcelain-Fused-to-Metal vs. All-Ceramic Restorations: AAED Survey Results

Gordon Christensen, DDS, MSD, PhD

This presentation is a compilation of the responses of Academy members and guests at the last AAED meeting. Last year (2010), about one-half of the fixed prosthodontic restorations placed in the US were ceramic. This presentation shows the most-used ceramic restorations, dentists' opinions about them and projections for the future.

1. Which is the most adequate tooth-colored indirect restoration type for crowns?
2. Which is the most adequate tooth-colored indirect restoration type for multiple unit fixed prostheses?
3. What characteristics need to be improved for all-ceramic restorations?



THURSDAY, AUGUST 4, 2011

7:45-8:10 AM

Digital Dentistry – Beyond Imagination

Lee Culp, CDT

As dentistry evolves into the digital world, the successful incorporation of computerization and new acquisition and manufacturing technologies will continue to provide more efficient methods of restoration fabrication and communication, while at the same time retaining the individual creativity and artistry of the skilled dentist and technician. This presentation will focus on the latest developments in intra-oral scanning, materials and computer milling/printing technology.

8:10-8:35 AM

The Esthetically/Periodontally Compromised Tooth #8

Rodolfo Gianserra, DMD

The influence of osseointegration in today's periodontal treatment planning is challenging the need of saving teeth, but the aesthetic challenge for periodontally-involved teeth remains the same. Treatment planning of periodontal and implant cases will be discussed. Periodontitis as a risk factor in implant dentistry and its impact on survival and success rate of implants in the long term will be analyzed. Optimizing aesthetics and maintaining a good long-term result in this type of patient is very challenging, and many aspects of therapy from implant design to prosthetic options need to be considered.



LEE CULP, CDT

Mr. Culp is the CTO for DTI Dental. He is the 2007 recipient of the Kenneth Rudd Award from the American Society of Prosthodontics and the 2007 AACD President's Award for Excellence in Dental Education. He is also an adjunct professor at UNC School of Dentistry, Graduate Prosthodontics Department.



RODOLFO GIANSEERRA, DMD

Dr. Gianserra graduated cum laude in Dentistry from University "La Sapienza" of Rome. He received the Certificate of Advanced Graduate Study in Periodontics at the University of Pennsylvania, where he also served as Clinical Assistant Professor of Periodontics.

Currently Dr. Gianserra is managing two full-time multispecialty private practices in Rome and Campobasso. He holds a teaching position in Periodontics at the University of Chieti. He is a Diplomate of the American Board of Periodontology and an active member of the American Academy of Osseointegration and the Italian Society of Periodontology. Dr. Gianserra published and lectured extensively on topics related to periodontics and implantology.



PRESENTATIONS



DEAN VAFIADIS, DDS

Dr. Vafiadis received his DDS and Certificate in Prosthodontics from the New York University College of Dentistry. He is a Clinical Associate Professor of Prosthodontics and Director of the Full-Mouth Rehabilitation CE course at NYU. He is a member of the ACP, AO, AAID, ICOI and the ADA. Dr. Vafiadis maintains a private practice limited to prosthodontics and implant dentistry in mid-town Manhattan.



MIKE GIRARD, RDT

Mr. Girard brings nearly 40 years of experience in the dental field in a variety of capacities. After successfully completing the requirements of the College of Dental Technology of Ontario, Mr. Girard attained licensure as a Registered Dental Technologist in 1975. After 20 years in the dental laboratory industry working with the Shaw Group of Laboratories, Mr. Girard transitioned to the dental manufacturer world and completed tenure of eight years with Nobel Biocare, a world leader in dental implants. Mr. Girard and his new company – Diadem Precision Technology, located in Windsor, Ontario and in Troy, Michigan – continues to help redefine a new dental lab direction: the design and processing of advanced digital restorations, including the fastest-growing all-ceramic from Ivoclar Vivadent – IPS e.max CAD.

THURSDAY, AUGUST 4, 2011 (CONTINUED)

8:35-9:00 AM

CAD/CAM Anterior Restorations: One and Two Visit Protocols

Dean Vafiadis, DDS

CAD/CAM technology has the advantage of reduced clinical chair-time and reduced laboratory costs. The accuracy of these techniques has improved to the point where they are now comparable to conventional techniques. The fabrication of anterior ceramic restorations with a one- and two-visit, in-office technique will be demonstrated. This presentation will review the current technology that allows the fabrication of anterior restorations for teeth and implants.

9:00-9:25 AM

Precision Industrial Milling of IPS e.max

Mike Girard, RDT

This presentation will provide a quick review of the dental market demographics and the changing face of the dental lab industry and how it may impact the dental profession. As the lab business continues to transition to digital technologies, there will be “integration challenges.” Mr. Girard will present the benefits of precision industrial milling and address how restorations will be delivered to our patients in 2020.

9:25-9:50 AM

The Fixed Dental Prostheses – Relevant Tomorrow?

Lyndon Cooper, DDS, PhD

Should the fixed dental prosthesis be designated an historical reference? This presentation will examine important gaps remaining in our general knowledge concerning tooth replacement therapies with emphasis on causes of failure or limitations among these different approaches. Current evidence does not condemn the fixed dental prosthesis, and, when considered broadly, there are important features of fixed dental prostheses that offer clinical advantages to clinicians with few risks beyond the alternate therapies. Perhaps the data is incomplete. Ultimately, the relevance of the fixed dental prosthesis depends upon the values we – both patients and their dentists – impart to natural teeth and missing teeth.

10:35-11:00 AM

The Implant-Supported Central Incisor – A Single Tooth Restoration

Nigel Saynor, BDS

Several risk factors must be taken into consideration when replacing a central incisor. The timing of tooth removal, implant placement and implant loading all have a significant impact on the treatment outcomes. Minimizing abutment interface interference can enhance soft tissue stability and the long-term aesthetic outcomes.



LYNDON COOPER, DDS, PHD

Dr. Cooper is the Stallings Distinguished Professor of Dentistry of the Department of Prosthodontics at the University of North Carolina at Chapel Hill. He is currently Chairperson, acting Director of Graduate Prosthodontics and the director of the Bone Biology and Implant Therapy Laboratory. Dr. Cooper is a Diplomate of the American Board of Prosthodontics and served as the 2010 President of the American College of Prosthodontics. He received the ACP's 2004 Clinician/Researcher Award and the IADR's 2009 Distinguished Scientist Award for Prosthodontics and Implantology. Dr. Cooper's laboratory focuses on bone biology, adult stem cell bone regeneration and clinical evaluation of dental implant therapies. The laboratory receives funding through NIH and by industry collaboration. Their research findings have been presented in over 90 publications and in more than 250 national and international presentations. These efforts integrate basic and clinical research to improve patient care.



NIGEL SAYNOR, BDS

Dr. Saynor qualified with distinction in 1980 from the University of Manchester. In 2008 he qualified by examination in Master of Dental Science Implantology. He is a Clinical Tutor at the University of Manchester on the implant program and is a Past President of the British Academy of Aesthetic Dentistry.



PRESENTATIONS



HAROLD BAUMGARTEN, DMD

Dr. Baumgarten received his dental degree, as well as Certificates in Periodontal Prosthetics and Periodontics, from the University of Pennsylvania. He is on the Editorial Board of the Journal of Implant and Reconstructive Dentistry and the The Compendium of Continuing Education in Dentistry. He is a Clinical Professor with the Department of Periodontics at the University of Pennsylvania and maintains a private practice in Philadelphia, Pennsylvania.



RICHARD LAZZARA, DMD, MScD

Dr. Lazzara received his Certificate in Periodontics and Master of Science in Dentistry at Boston University. He is formerly a Clinical Assistant Professor at the University of Southern California School of Dentistry, Associate Clinical Professor at the University of Maryland and Periodontal and Implant Regenerative Center and Associate Professor at the University of Miami. Dr. Lazzara has published numerous articles and textbook chapters on the subject of osseointegrated implants of which research topics cover a variety of areas, including regenerative, restorative and early loading protocols. Recent focus has been the clinical benefits of the changing therapeutic protocols as a result of bioengineered surface technology. He has lectured extensively throughout the US and internationally on the surgical and prosthetic application of implant dentistry and maintains a private practice, specializing in periodontics and implant dentistry, in West Palm Beach, Florida.

THURSDAY, AUGUST 4, 2011 (CONTINUED)

11:00-11:25 AM

Achieving Superior Results with Immediate Implant Placement & Immediate Restoration: A CAD/CAM Approach
Harold Baumgarten, DMD

A new technique will be presented that combines immediate flapless implant placement with immediate provisionalization, intra-oral scanning and CAD/CAM technology to develop patient-specific components to maximize the aesthetic result.

11:25-11:50 AM

Platform Switching: Concepts and Cosmetic Advantages
Richard Lazzara, DMD, MScD

Rather than arguing whether endodontic or implant treatments are inherently better, dentists must decide, on a case-by-case basis, what is best for our patients. This lecture by an endodontist/implant surgeon explores the issues associated with unbiased treatment planning and the procedures required for predictable results.



11:50 AM-12:15 PM

The Tissue Integrated Abutment

Myron Nevins, DDS

Previous research has demonstrated the effectiveness of laser-ablated microgrooves placed on implant collars to support direct connective tissue (CT) attachment, a biologic phenomenon previously believed to be impossible. Such a direct CT connection serves as a physiologic barrier to the apical migration of junctional epithelium and prevents crestal bone resorption. New research is now available that evaluates bone and soft tissue healing patterns when laser-ablated microgrooves are placed on the abutment margin.

12:15-12:40 PM

The Effect of a Stable Conical Connection and a Minimally Invasive Procedure on Midfacial Soft Tissue Levels After Tooth Extraction

Paul Weigl, DDS

Aesthetic outcomes (PES, WES) depend on stable midfacial soft tissue levels. A lot of factors and treatment concepts are discussed to achieve predictable and long-lasting results. In case of a fresh extraction socket, the seal with the own tooth or a temporary crown can preserve the complete soft tissue shape. This "prosthetic" socket preservation simulates an intentional tooth re-implantation without the root. The same seal and therefore an optimal healing mode of the extraction socket is realized by an immediately inserted and restored implant. However, the subsequent manufacturing of the final restoration includes a repeated assembling and removing of components involved in the established periimplant mucosal seal: temporary abutments and temporary crowns. The disrupted epithelial and connective tissue attachment is associated with dimensional and structural changes of the mucosal seal and contributes to pink aesthetic failures. Therefore the "one abutment one time" and the "one crown one time" concepts are preferred. A platform switched and sealed implant-abutment connection is additionally identified to be important for preventing a crestal bone loss and an apical shift of the midfacial soft tissue level. The lecture demonstrates a workflow for oral surgeons, prosthodontists and dental technicians to achieve a predictable midfacial soft tissue level by an effective and non-traumatic protocol. Primary results of a prospective clinical trial are promising. Additionally an insight into a scientific-based explanatory model is given, demonstrating how a stable conical connection can increase the probability of a periimplant tissue preservation.



MYRON NEVINS, DDS

Dr. Nevins is the Editor of the International Journal of Periodontics & Restorative Dentistry and Associate Clinical Professor of Periodontology at the Harvard School of Dental Medicine. Dr. Nevins is a past President of the American Academy of Periodontology and a former Director and Chairman of the American Board of Periodontology, where his contributions have been recognized with the Gold Medal and the Master Clinician Awards. He is a Professor of Periodontics at the University of Pennsylvania School of Dentistry. He maintains a private practice limited to periodontics and implantology in Swampscott, Massachusetts. Dr. Nevins is the founder and President of Perio Imp Research, Inc.



PAUL WEIGL, DDS

Dr. Weigl graduated from the University of Munich Dental School in 1989. Since 1992 he has worked as an Assistant Professor and Director of Preclinical Studies for the Department of Prosthodontics of the Johann Wolfgang Goethe-University Frankfurt am Main. Dr. Weigl has a special focus in the field of prosthetics on implants. He is also a Senior Specialist at the Department of Oral Surgery and Implant Dentistry, University of Frankfurt. Additionally he runs an R&D project to develop a fully automatic working CAD/CAM process to manufacture complete crowns and bridges and to develop a new fs-laser-based device for diagnosis and minimally invasive therapy of caries.

PRESENTATIONS



SCOTT GANZ, DMD

Dr. Ganz graduated from the University of Medicine and Dentistry, New Jersey Dental School. He completed a three-year specialty program in Maxillofacial Prosthetics at M.D. Anderson Cancer Center in Houston, Texas. Dr. Ganz is well-published in many professional textbooks and journals. He delivers presentations both nationally and internationally on the prosthetic and surgical phases of implant dentistry and is considered one of the world's leading experts in the field of computer utilization for diagnostic, graphical and treatment planning applications in dentistry. Dr. Ganz has been a featured speaker for numerous dental organizations and currently serves as Associate Editor for the peer-reviewed journal Implant Dentistry and on the editorial staff of Practical Procedures and Esthetic Dentistry.



MICHAEL PIKOS, DDS

Dr. Pikos is originally from Campbell, Ohio. He attended The Ohio State University, where he graduated summa cum laude and Phi Beta Kappa. He also graduated with honors from The Ohio State University College of Dentistry. Dr. Pikos completed an internship at Miami Valley Hospital and residency training in Oral & Maxillofacial Surgery at the University of Pittsburgh, Montefiore Hospital. He is a Diplomate of the American Board of Oral and Maxillofacial Surgery, a Diplomate of the American Board of Oral Implantology/Implant Dentistry and a Diplomate of The International Congress of Oral Implantologists. Dr. Pikos is the recipient of the 2006 Aaron Gersbkoff Memorial Award from the American Academy of Implant Dentistry.

FRIDAY, AUGUST 5, 2011

7:45-8:10 AM

New Digital Paradigms to Achieve Optimized Anterior Esthetics: 3-D Planning of Implants and Abutments

Scott Ganz, DMD

It has been stated that the "goal of implant dentistry is not the implant, it is the tooth that we replace..." Achieving successful implant reconstruction is therefore dependent on many factors. Placing the implant within the existing bone allows for osseointegration to occur, but this process has little impact on esthetic outcomes. The most desirable implant receptor site should always correlate with the ultimate restorative goal and under ideal conditions should be known in advance of the surgical intervention. If the receptor site is not ideal, there are ever-evolving methods to manage the bone and soft tissue. Success can best be achieved through the initial diagnosis and treatment planning phase. New surgical and prosthodontic paradigms have now been established through the utilization of CT/CBCT 3-D imaging technologies, which provide clinicians with an unprecedented appreciation of the patient's anatomy for pre-surgical assessment of dental implant receptor sites, bone grafting or other procedures.

8:10-8:35 AM

Extraction Site Management #8 Site: Synergy of Hard and Soft Tissue Grafting

Michael Pikos, DDS

This clinically-based presentation will focus on extraction site management of the compromised #8 site. It will feature a sequential diagnostic treatment planning protocol and will include indications, timing and sequence of appropriate hard and soft tissue grafting for optimal implant reconstruction.

8:35-9:00 AM

Autotransplantation of Premolars for the Replacement of Traumatized Maxillary Incisors

Jim Janakievski, DDS

Options to replace missing or ankylosed teeth in the anterior maxilla are limited for growing patients. Treatment is usually aimed at developing the ridge for future implant placement. Autotransplantation of a premolar to the incisor site offers permanent tooth replacement, using a natural tooth to achieve an optimal aesthetic and functional outcome.

9:15-9:40 AM

The Relevance of Tissue Form, Color and Thickness on Anterior Implant Esthetics

Stephen Chu, DMD, MSD, CDT

Implant dentistry is continuously evolving, offering new and more predictable forms of therapy with minimally invasive protocols. Innovative techniques now allow for better aesthetics and greater patient comfort. However, these new techniques and therapies continue to raise questions and concerns regarding the risk and rewards of each. Specifically, controversial issues regarding esthetic outcomes related to immediate single anterior tooth implant replacement and immediate provisional restoration will be presented. This lecture will address current concepts, research and innovations in immediate implant placement and how they can enhance treatment procedures, time and clinical outcomes for greater patient care and satisfaction.



JIM JANAKIEVSKI, DDS

Dr. Janakievski received his DDS from the University of Toronto. He completed his post-graduate training at the University of Washington, where he received a Certificate in Periodontology with a MSD degree and a fellowship in Prosthodontics. He is a Diplomate of the American Board of Periodontology, serves as an Affiliate Assistant Professor at the University of Washington and maintains a private practice in Tacoma, Washington.



STEPHEN CHU, DMD, MSD, CDT

Dr. Chu is Associate Professor and Director of Esthetic Education at Columbia University College of Dental Medicine. He maintains a private practice in esthetic dentistry and fixed prosthodontics in New York City. Dr. Chu has published over 25 articles, three textbooks and given over 100 lectures nationally and internationally on the subjects of esthetics, prosthodontics and implant dentistry. He is on the editorial review board of the EJED, IJOMI, IJPRD, JERD and Compendium. Dr. Chu is the creator of Chu's Aesthetic Gauges, manufactured by Hu-Friedy Co., Inc. Dr. Chu is presently co-authoring the Fundamentals of Implant Dentistry with Drs. Dennis P. Tarnow and Peter K. Moy with Quintessence Publishing Co.



PRESENTATIONS



MAURICE SALAMA, DMD

Dr. Salama completed his undergraduate studies at the State University of New York at Binghamton in 1985, where he received his BS in Biology.

Dr. Salama received his DMD from the University of Pennsylvania School of Dental Medicine, where he later received his dual specialty certification in Orthodontics and Periodontics, as well as his implant training at the Branemark Center at Penn.

Dr. Salama is currently on the faculties of the University of Pennsylvania and the Medical College of Georgia as Clinical Assistant Professor of Periodontics. Dr. Salama is a permanent member of the Scientific Committee of the world's leading online dental education website, DENTALXP.com.

He is also a member of the Team Atlanta Dental Practice, which is a multidisciplinary practice world-renowned for their clinical research in reconstructive and esthetic dentistry.



TAKASHHI WATANABE, DDS

Dr. Watanabe graduated from the Meikai University School of Dentistry in 1982. He is a Clinical Professor and Assistant Director of Continuing Dental Education at the Meikai University School of Dentistry. He will be the President of the Japan Academy of Clinical Dentistry for the next term and maintains a membership in the American Academy of Periodontology.

He has a private practice in Iwaki, Fukushima, Japan.

FRIDAY, AUGUST 5, 2011 (CONTINUED)

9:40-10:05 AM

Tissue Augmentation in Esthetic Therapy

Maurice Salama, DMD

Clinicians today have access to an astounding array of new technology, tools and materials to utilize in their progressive and esthetically-oriented practices. However, none of them can ensure success if the treatment design is inadequate. This presentation puts an emphasis on identifying the risk factors to successful esthetic outcomes as well as on developing appropriate solutions to overcoming them.

A clear blueprint will be outlined, which will incorporate digital and biomaterial technology synergistically with advanced surgical protocols to overcome esthetic challenges and predictably achieve successful results. In addition, specific guidelines for the utilization of new regenerative products will be outlined, as well as new applications for future enhancement.

10:35-11:00 AM

Creating Labial Bone for Immediate Implant Placement: A Minimally Invasive Approach Utilizing Orthodontic Therapy in the Esthetic Zone

Takashhi Watanabe, DDS

The absence or the loss of the labial bone in the maxillary anterior esthetic zone is a major problem encountered in immediate implant placement. Attempts to regenerate this labial bone utilizing guided bone regeneration or substituting connective tissue grafting to compensate for the loss of the labial bone has not always been predictable. This presentation will discuss orthodontic extrusion as another technique to regenerate the labial bone.

11:15-11:40 AM

The Anterior Composite Challenge: Playing with Light and Shadows

Pascal Zyman, DDS

Modern adhesive dentistry is used with a variety of esthetic procedures to enhance function and appearance. Therefore, the new composite resin systems imitate both enamel and dentin shade, translucency, opalescence, fluorescence and surface texture. They are designed to facilitate the selection of the material by giving to the dentist a recipe of the right dentin and enamel shades.

However, this is not enough to obtain a successful restoration. In the anterior area, the clinician has to overcome the problem of light and shadows. We will focus on important spectrometric research studying the different opacities and translucencies of the main composite brands. Through this study and a composite classification based on opacity, we will propose an appropriate protocol that takes into account the thickness of the layers and the value of the final restoration.

Numerous clinical examples will illustrate this lecture.



PASCAL ZYMAN, DDS

Dr. Zyman graduated in 1985 from the Paris VII, D. Diderot, School of Dentistry, where he also retained a clinical assistant appointment in the Department of Restorative Dentistry. He received his Certificates in both Dental Materials and Prosthetic Dentistry from the same University. He is the President of the French Society of Esthetic Dentistry (2011-2012) and an Active Member of the European Academy of Esthetic Dentistry (EAED). He is also an Associate Member of the American Academy of Esthetic Dentistry (AAED). Dr. Zyman has published numerous articles on shade selection and communication, as well as on composite and ceramic restorations. He has lectured extensively on the same topics in Europe and the Middle East. He maintains a private practice limited to esthetic dentistry in Paris.

PRESENTATIONS



ED MCLAREN, DDS

Dr. McLaren attended the University of Redlands, where he graduated Phi Beta Kappa and magna cum laude. He received his

DDS from the University of the Pacific School of Dentistry, where he graduated Omicron Kappa Upsilon.

After several years of general practice, he received his specialty Certificate in Prosthodontics from the UCLA School of Dentistry.

Dr. McLaren is a Professor in the Biomaterials and Advanced

Prosthodontic department. He is also

an Adjunct Assistant Professor for the University of Oregon Dental School. Dr. McLaren maintains a

private practice limited to prosthodontics and esthetic dentistry

in which he does all of his own ceramics. He is the director of the

UCLA Center for Esthetic Dentistry, a full-time didactic and

clinical program for graduate dentists. He is also the founder and

director of the UCLA Master Dental Ceramist program. The

residency program is a full-time master ceramist program for dental

technicians featuring extensive experience with the newest esthetic

restorative systems.

Thank you to the following companies for their generosity in making this 3-D presentation possible: 3M ESPE, Nobel Biocare, Photomed, Shofu and Vident.

FRIDAY, AUGUST 5, 2011 (CONTINUED)

11:40 AM-12:25 PM


Ceramic Wars in 3D: The Return of the Ceramist

Ed McLaren, DDS

The role of the ceramist in the delivery of highly esthetic ceramic restorations has been significantly and forever altered by the increased development and evolution of digitally-created restorations. There is a clash or “war” in philosophies – how human artistic expression can co-exist with the digital “machine world” – as ceramists struggle with how to adapt to the changing conditions and evolve their skills and services to survive and thrive in this new reality. So much so a global question is being asked, “What is left for me?” The two most important areas for the foreseeable future where ceramists can apply and excel in using their creative talents is in creating single anterior teeth and the “minimalistic ceramic layering” of anterior teeth (which machines can’t do).

This presentation will cover the clinical and laboratory techniques for the single anterior restoration and minimalistic veneering of anterior natural teeth (called the “Mini”).





“Results are all that matter. I’ve been prescribing Lava restorations for about six years. I know from experience that when I send the case to my lab, it’s going to **look and fit perfectly—and last.** I’ve had consistent success, even on six-unit bridges. Our patients love it so much, they actually tell their friends.”

– Dr. Kyle Edlund

**Why? How about 10 years,
100 studies and
millions of cases.¹**

Staggering statistics aside, there are endless reasons to prescribe Lava™ Zirconia. Start with patient demand for a crown or bridge with no metal in it. Or the look of genuine satisfaction when a patient sees beautiful Lava zirconia where a large amalgam once was. Lava zirconia takes cosmetics to a whole new level. Isn’t that where you want to take your practice?

Start now.

**Prescribe authentic
Lava zirconia.**



**Lava™
Zirconia**

▶ **Learn how you can offer Lava Zirconia.
Call 800-634-2249 or visit
www.3MESPE.com/Lava**

3M ESPE

CONFLICT OF INTEREST DISCLOSURES

This educational forum will comply with appropriate disclosure policies as set forth by the American Dental Association's code of ethics and professional standards. The AAED speakers will verbally disclose any material, financial or other relationships that pose a potential conflict of interest. Such disclosures may also be included in written form within this program. Speakers will also disclose any unapproved use of products or devices that they will be discussing. Disclosure requirements are not intended to imply any impropriety, but rather to inform the audience that they exist.

The following speakers have indicated no potential conflict of interest(s) exist:

I. Stephen Brown, DDS

Rodolfo Gianserra, DMD

Takashi Watanabe, DDS

Rogerio Zambonato, DDS, MS

Lyndon Cooper, DDS, PhD

Jim Janakievski, DDS

Paul Weigl, DDS

Pascal Zyman, DDS

The following speakers have disclosed these relationships which may pose a conflict of interest:

Harold Baumgarten, DMD

Company: Biomet 3i; Product: Dental Implants; Relationship: Consultant, Speakers Bureau, Education/Research Grant

Markus B. Blatz, DMD, PhD

Company: Nobel Biocare, Straumann, Ivoclar Vivadent, Heraeus Kulzer, Kuraray, Noritake, 3M ESPE, Shofu Dental, Ultradent, Zirkonzahn; Relationship: Education/Research Grant

Dennis Brave, DDS

Company: Brasseler USA; Relationship: Honorarium

Gordon Christensen, DDS, MSD, PhD

Company: Practical Clinical Courses; Product: Dental Education; Relationship: Director/Owner

Stephen Chu, DMD, MSD, CDT

Company: Biomet 3i, Keystone Dental, Hu-Friedy, Dentium; Relationship: Speakers Bureau/Lecturer, Education/Research Grant

Lee Culp, CDT

Company: Ivoclar Vivadent, D4D Technologies; Product: Ceramic Materials, CAD/CAM Technology; Relationship: Speakers Bureau, Author, Honorarium, Instructor

Scott Ganz, DMD

Company: Biohorizons, Materialise, Imaging Sciences, Inc., ICOI; Product: Implants, Software, CBCT; Relationship: Consultant, Speakers Bureau/Lecturer, Board Member, Author

Mike Girard, RDT

Company: Diadem Precision Technology; Service: Industrial Milling Production; Relationship: CEO, President

Kenneth Koch, DMD

Company: Brasseler USA; Relationship: Honorarium

Richard Lazzara, DMD, MScD

Company: Biomet 3i; Product: Dental Implants; Relationship: Consultant

Pascal Magne, DMD, PhD

Company: Quintessence; Product: Book; Relationship: Author

Ed McLaren, DDS

Company: 3M ESPE, Vident, Ivoclar Vivadent, Bisco, Heraeus, Nobel Biocare; Relationship: Education/ Research Grant

Ali Nasseh, DDS, MMSc

Company: Brasseler USA; Relationship: Honorarium

Myron Nevins, DDS

Company: Biohorizons; Product: Implants; Relationship: Honorarium, Education/Research Grant

Michael Pikos, DDS

Company: Biohorizons, Carestream, Salvin Dental, PiezoSurgery, Osteogenics, BTI, Ellman;
Relationship: Consultant/Honorarium

Maurice Salama, DMD

Company: Nobel Biocare, Implant Innovations, Inc., Keystone Dental, Dentsply, Brasseler USA, Zimmer, Imaging Schines, BioHorizons, 3M, Bisco, Biroa, Siemens, Premier, GC America, Ivoclar, DenMat, Shofu, Vident, ProDentec, Panasonic, Minolta, Kodak, Sony, Zeiss, Hu-Friedy, Belmont, Consult Pro, Stoma, XCPT, Titan Instruments, Heraeus, Cosmedent, LED Dental, BTI, Osteohealth, Partners in Synergy, Dental XP; Product: Most new developments in the science or art of dentistry over the past two decades.

Nigel Saynor, BDS

Company: Dentsply Tulsa; Product: Ankylos Implant; Relationship: Honorarium

Dean Vafiadis, DDS

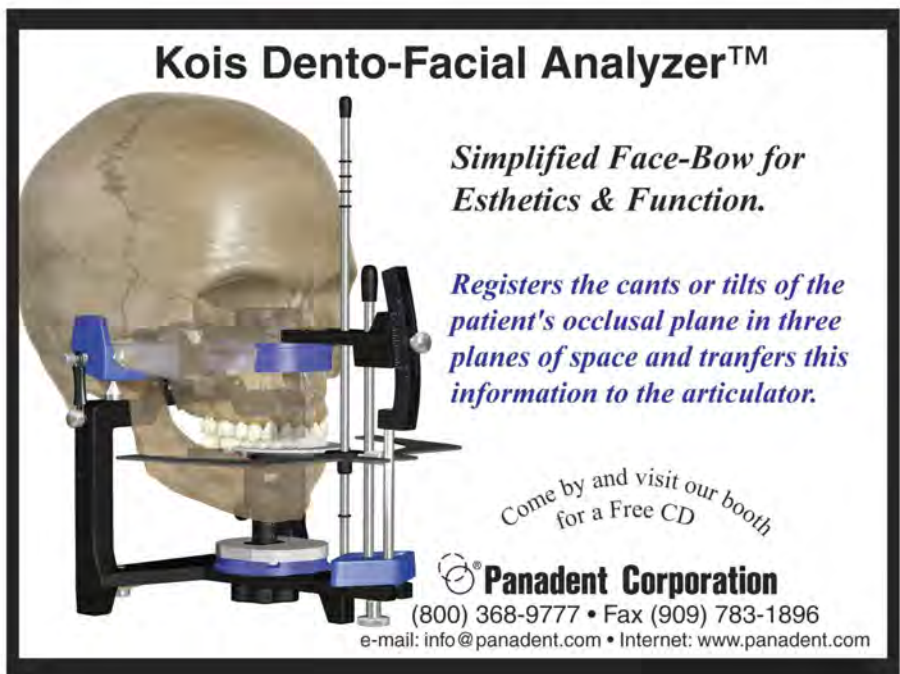
Company: Biomet 3i; Relationship: Speakers Bureau/Lecturer

Glen Van As, BSc, DMD

Company: AMD Lasers; Product: Laser; Relationship: Consultant, Speakers Bureau, Honorarium, Instructor

The following speakers did not disclose any conflicts prior to the printing of this program book:

Cláudio Pinho, DDS



Kois Dento-Facial Analyzer™

Simplified Face-Bow for Esthetics & Function.

Registers the cants or tilts of the patient's occlusal plane in three planes of space and transfers this information to the articulator.

Come by and visit our booth for a Free CD

Panadent Corporation
(800) 368-9777 • Fax (909) 783-1896
e-mail: info@panadent.com • Internet: www.panadent.com

AAED Membership Roster

AAED Associate Members

Harry F. Albers, DDS	Santa Rosa, CA
Elizabeth M. Bakeman, DDS	Grand Rapids, MI
Michael Block, DMD	Metairie, LA
John Burgess, DDS, MS	Birmingham, AL
Stephen Chu, DMD, MSD, CDT	New York, NY
Donald Clem III, DDS	Fullerton, CA
Josef Diemer, DDS	Meckenbeuren, Germany
Daniel Edelhoff, DMD, PhD	Munich, Germany
Nicolas Elian, DDS	Englewood Cliffs, NJ
Newton Fahl, DDS, MS	Curitiba, Puerto Rico
Thomas Han, DDS, MS	Los Angeles, CA
Ernst Hegenbarth, MDT	Neuberg, Germany
Frank Higginbottom, DDS	Dallas, TX
Gerhard Iglhaut, DDS	Memmingen, Germany
David Klaff, BDS	London, United Kingdom
Douglas J. Knight, DDS, MSD	Tacoma, WA
So-Ran Kwon, DDS, MS, PhD	Iowa City, IA
Brian P. LeSage, DDS	Beverly Hills, CA
Sonia Leziy, DDS	Vancouver, Canada
Ricardo Mitrani, DDS, MSD	Mexico City, Mexico
Tal Morr, DMD, MSD	Miami, FL
Peter K. Moy, DMD	Los Angeles, CA
Kevin Murphy, DDS, MS	Baltimore, MD
Stephen Olitsky, DMD	Gwynedd Valley, PA
Kirk Pasquinelli, DDS	San Francisco, CA
Keith Phillips, DMD, MSD	Tacoma, WA
Stephen Rimer, BDS	Boca Raton, FL
Matthew Roberts, CDT	Idaho Falls, ID
Giuseppe Romeo, CDT	Torino, Italy
David M. Sarver, DMD, MS	Birmingham, AL
Steve Snow, DDS	Danville, CA
Christian F.J. Stappert, DDS, MS, PhD	New York, NY
Alan Sulikowski, DMD	Cambridge, MA
Jeffery R. Thomas, DDS	New Bern, NC
Mario A. Vilardi, DMD	Fishkill, NY
Aki Yoshida, RDT	Weston, MA
Homayoun Zadeh, DDS, PhD	Los Angeles, CA
Pascal Zyman, DDS	Paris, France

AAED Fellows

Pinhas Adar, MDT, CDT	Atlanta, GA
Edward P. Allen, DDS, PhD	Dallas, TX
Michael G. Arvystas, DMD	New York, NY
Nasser Barghi, DDS	San Antonio, TX
William Becker, DDS, MSD	Tucson, AZ
Joel Berg, DDS, MS	Seattle, WA
Rainer Bergmann, DMD	Palm Desert, CA
Jeff J. Brucia, DDS	San Francisco, CA
L. Stephen Buchanan, DDS	Santa Barbara, CA
Vincent Celenza, DMD	New York, NY
Gerard J. Chiche, DDS	Ponte Vedra Beach, FL
Theodore P. Croll, DDS	Doylestown, PA
Fereidoun Daftary, DDS, MScD	Beverly Hills, CA
Terence Donovan, DDS	Hillsborough, NC
James R. Dunn, DDS	Auburn, CA
Lisa B. Emirzian, DMD	East Longmeadow, MA
Jimmy B. Eubank, DDS	Plano, TX
Mauro Fradeani, MD, DDS	Pesaro, Italy
Jaime A. Gillozano, MD, DDS, PhD	Billbao, Spain
Cary E. Goldstein, DMD	Atlanta, GA
Joseph R. Greenberg, DMD	Villanova, PA
Van B. Haywood, DMD	Augusta, GA
Mark N. Hochman, DDS	New York, NY
Paul S. Hoyt, BA, DDS	San Francisco, CA
Abraham Ingber, DDS	Rockville, MD
Jeffrey S. Ingber, DDS	Philadelphia, PA
Stuart L. Isler, DMD	Denville, NJ
John Kanca III, BA, DMD	Middlebury, CT
Hiroshi Kawazu, DDS, DDSc	Tokyo, Japan
Greggory A. Kinzer, DDS, MSD	Seattle, WA
John C. Kois, DMD, MSD	Seattle, WA
Vincent O. Kokich, Jr., DMD, MSD	Tacoma, WA
Fritz R. Kopp, DMD	Zurich, Switzerland
Kenneth A. Malament, DDS, MScD	Boston, MA
David P. Mathews, DDS	Tacoma, WA
Edward A. McLaren, DDS	Los Angeles, CA
Dan Nathanson, DMD, MSD	Boston, MA
Linda C. Niessen, DMD, MPH, MPP	Dallas, TX
W. Peter Nordland, DMD, MS	La Jolla, CA

Jacinthe M. Paquette, DDS	Newport Beach, CA
Steven R. Potashnick, DDS	Chicago, IL
Laurence R. Rifkin, DDS	Beverly Hills, CA
Robert G. Rifkin, DDS	Beverly Hills, CA
Richard D. Roblee, DDS, MS	Fayetteville, AR
Louis F. Rose, DDS, MD	Philadelphia, PA
Clifford J. Ruddle, DDS	Santa Barbara, CA
Henry Salama, DMD	Atlanta, GA
Maurice A. Salama, DMD	Atlanta, GA
Dennis A. Shanelec, DDS	Santa Barbara, CA
Itzhak Shoher, DMD, MSc	Tel-Aviv, Israel
Richard J. Simonsen, DDS, MS	Scottsdale, AZ
Ralph B. Sozio, DMD	Boston, MA
Neil L. Starr, DDS	Washington, DC
David R. Steiner, DDS, MSD	Tacoma, WA
Edward J. Swift, Jr., DMD, MS	Chapel Hill, NC
Henry H. Takei, DDS, MS	Los Angeles, CA
Asami Tanaka, CDT, NMD	Skokie, IL
Dennis P. Tarnow, DDS	New York, NY
Bernard Touati, DDS, DSO	Paris, France
Brian S. Vence, DDS	West Dundee, IL
Greg J. Vigoren, DDS	Newport Beach, CA
Barry D. Wagenberg, DMD	Livingston, NJ
John D. West, DDS, MSD	Tacoma, WA
Robert R. Winter, DDS	Scottsdale, AZ
Peter Wohrle, DMD, MMSc	Newport Beach, CA
Jonathan Zamzok, DMD	New York, NY
Carlo Zappala, MD, DDS	Bergamo, Italy

Honorary Member

Dennis C. Smith, PhD	Collingwood, Canada
----------------------------	---------------------

Life Fellows

Donald E. Arens, DDS, MSD	Indianapolis, IN
Stephen F. Bergen, DDS, MSD	West Orange, NJ
Robert P. Berger, CDT, FNBC	Encino, CA
Noah Chivian, DDS	West Orange, NJ
Gordon J. Christensen, DDS, MSD, PhD	Provo, UT
Rella P. Christensen, RDH, PhD	Provo, UT
Raymond M. Contino, DDS	Laguna Beach, CA
Peter E. Dawson, DDS	Saint Petersburg, FL
Norman L. Feigenbaum, DDS	Coral Springs, FL
Mark J. Friedman, DDS	Encino, CA
Philippe G. Gallon, DDS	Crans-Montana, Switzerland
David A. Garber, DMD, BDS	Atlanta, GA
Ronald E. Goldstein, DDS	Atlanta, GA
Niles F. Guichet, DDS	Orange, CA
Harald O. Heymann, DDS, MEd	Chapel Hill, NC
Richard H. Klein, DDS	Tahuya, WA
Vincent G. Kokich, DDS, MSD	Tacoma, WA
Masahiro Kuwata, CDT	Cedar Knolls, NJ
Arlen D. Lackey, DDS	Pacific Grove, CA
Ronald I. Maitland, DMD	New York, NY
Baldwin W. Marchack, DDS, MBA	Pasadena, CA
Gerry Mariacher, CDT	Houston, TX
Charles J. Miller, DDS	Pittsburgh, PA
Preston D. Miller, DDS	Memphis, TN
K. William Mopper, MS, DDS	Glenview, IL
George A. Murrell, DDS	Rolling Hills, CA
Ralph V. O'Connor, DDS	Lakewood, WA
Ake L. Parmlid, LDS	Goteborg, Sweden
Jack D. Preston, DDS	Templeton, CA
Carl E. Rieder, DDS	Corona del Mar, CA
Reuben R. Roach, DDS	St. Petersburg, FL
Edwin S. Rosenberg, BDS, HDD, DMD	Philadelphia, PA
Ernest W. Scheerer, DDS	Honolulu, HI
Harold M. Shavell, DDS	Northbrook, IL
Cherilyn G. Sheets, DDS	Newport Beach, CA
David S. Shelby, DDS	Wingdale, NY
Frank M. Spear, DDS, MSD	Seattle, WA
Robert C. Sproull, DDS	El Paso, TX
Daniel Y. Sullivan, DDS	Washington, DC
Walter F. Turbyfill, DMD	West Columbia, SC
Leo C. Ward, DMD	Sherman Oaks, CA
Arnold S. Weissgold, DDS	University Park, FL
Bernard Weissman, CDT	New York, NY
Henry N. Yamada, DDS, MEd, MBA	Los Angeles, CA
Ralph A. Yuodelis, DDS, MSD	Kenmore, WA

AAED PAST PRESIDENTS/ANNUAL MEETING LOCATIONS

1975	Ronald E. Goldstein, DDS	Chicago, IL
1976	Charles L. Pincus	Las Vegas, NV
1977	Charles L. Pincus	Colorado Springs, CO
1978	Ronald E. Goldstein, DDS	Colorado Springs, CO
1979	Raymond M. Contino, DDS	Colorado Springs, CO
1980	Gordon J. Christensen, DDS, MSD, PhD	White Sulphur Springs, WV
1981	Carl E. Rieder, DDS	San Francisco, CA
1982	Peter K. Dawson, DDS	Boca Raton, FL
1983	Jack D. Preston, DDS	Maui, HI
1984	David S. Shelby, DDS	Bermuda
1985	Henry N. Yamada, DDS, MEd, MBA	Sun Valley, ID
1986	Noah Chivian, DDS	Colorado Springs, CO
1987	Niles F. Guichet, DDS	Laguna Niguel, CA
1988	Lloyd L. Miller, DMD	Cambridge, MA
1989	Leonard Abrams, DDS	Pebble Beach, CA
1990	Stephen K. Bergen, DDS, MSD	Hershey, PA
1991	Ralph V. O'Connor, DDS, MSD	Santa Barbara, CA
1992	George A. Murrell, DDS	Santa Fe, NM
1993	Robert P. Berger, CDT, FNBC	Los Angeles, CA
1994	Cherilyn G. Sheets, DDS	Maui, HI
1995	Reuben R. Roach, DDS	Palm Beach, FL
1996	Donald E. Arens, DDS, MSD	Aspen, CO
1997	David A. Garber, DMD, BDS	Cancun, Mexico
1998	Edwin S. Rosenberg, BDS, HDD, DMD	Philadelphia, PA
1999	Vincent G. Kokich, DDS, MSD	Whistler, British Columbia, Canada
2000	Mark J. Friedman, DDS	Kauai, HI
2001	Daniel Y. Sullivan, DDS	Washington, DC (2002)
2002	Frank M. Spear, DDS, MSD	Beaver Creek, CO
2003	Ronald I. Maitland, DMD	Dana Point, CA
2004	Harald O. Heymann, DDS, MEd	Banff, Alberta, Canada
2005	Baldwin W. Marchack, DDS, MBA	Kohala Coast, HI
2006	Gerard J. Chiche, DDS	Grand Cayman, Cayman Islands
2007	Edward P. Allen, DDS, PhD	Colorado Springs, CO
2008	John C. Kois, DMD, MSD	Laguna Niguel, CA
2009	John D. West, DDS, MSD	Las Vegas, NV
2010	Vincent Celenza, DMD	Maui, HI



I can honestly say I'm a changed person! Not only has microscope-enhanced dentistry helped me ergonomically, but it has taken my clinical practice to a whole new level. Efficiency has increased dramatically. Patients feel well taken care of because they know I see what the naked eye or loupes can't.

*Stacy Becker-Walker, DDS
Imperial, MO*

Get a New View of Dentistry

...and add new life to your practice

The Global Microscope

- Say goodbye to neck and back pain – Work sitting comfortably upright
- Document cases with camera attachments – enhancing communication with patients, insurance companies, staff, colleagues
- Improve efficiency and ROI
- Love what you do even more!

GSCI0041 5BW 6/10

GLOBAL
SURGICAL™ CORPORATION

THE LEADER IN DENTAL MICROSCOPES - CONTACT US TODAY!

1-800-861-3585 • 1-636-861-3388

global@globalsurgical.com • www.globalsurgical.com



ETCH, CLICK & BOND

Easier is now better


ACE® ALL-BOND TE™ is a hand-held universal **total-etch** bonding system that lets you prime and bond in one application. Faster bonding without compromised bond strength or durability.

BISCO is a proud sponsor of the AAED Annual Meeting!

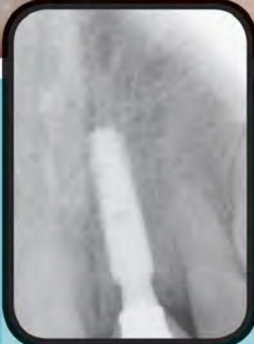


Call to order: 800-247-3368 • www.bisco.com

Where **ANKYLOS**[®] goes,
hard and soft tissue follow.



It's time to measure tissue response
in gains, not losses.



Natural-looking esthetics that last.
That's the beauty of the ANKYLOS Implant System.

- **Conical connection with no micro-movement¹**
- **Long-term hard and soft tissue stability²**
- **Gain in papillae height³**

Call 1-800-662-1202 for a bibliography of clinical studies
or to learn more from a fellow clinician in your area.
Bringing the importance of tissue response front and center.

Distributed By:

DENTSPLY
TULSA DENTAL
SPECIALTIES
Endodontics & Implants

Our Quality. Your Success.
Their Satisfaction.

1-800-662-1202

www.tulsadentalspecialties.com

Manufactured By:

DENTSPLY
FRIADENT



Consult Instructions For Use For Dental Use Only Rx Only

© 2011 DENTSPLY International, Inc. ANKADCSP2/11

- ¹ The ANKYLOS tapered connection shows no micromovement as shown by Zipprieh using a chewing simulator. No clinical data is available. Zipprieh, H., et al., *Erfassung, Ursachen und Folgen von Mikrobewegungen am Implantat-Abutment-Interface*, *Implantologie*, 2007, 15(1), p. 31-46.
- ² The ANKYLOS offset tapered implant abutment connection provides long-term hard and soft tissue stability over a mean period of 56 months as demonstrated by Nentwig's clinical observation of no progressive bone or peri-implant mucosa loss in 95.8% and 97.8% of 5439 cases respectively. Nentwig, G.H., *Ankylos implant system: concept and clinical application*, *J Oral Implantol*, 2004, 30(3), p. 171-7.
- ³ Abboud noted that clinical observation showed esthetic outcomes and a gain in interdental papilla height in 16 patients when the ANKYLOS offset tapered connection was used. This effect persisted for a period of over 12 months after implant placement. Abboud, M., et al., *Immediate loading of single-tooth implants in the posterior region*, *Int J Oral Maxillofac Implants*, 2005, 20(1), p. 61-8.

*Case provided courtesy of
Drs. Gary Brouseff and Dana Fallon



Save the Date

AAED 37TH ANNUAL MEETING

August 7-10, 2012

The Ritz-Carlton, Naples

Naples, Florida





303 W. Madison Street
Suite 2650
Chicago, IL 60606

Phone: 312.981.6770
Fax: 312.265.2908
www.estheticacademy.org
info@estheticacademy.org

The American Academy of Esthetic Dentistry
is an affiliated organization of the International
Federation of Esthetic Dentistry (IFED).

