



Recovery Epicenter

A Recovery Community Organization (RCO)
Serving Pasco and Pinellas Counties

FOUNDATION



HOW WE SUPPORT OUR COMMUNITY

Persons with lived experience offer our participants guidance and support at every stage of recovery. Our Certified Recovery Peer Support specialists meet participants where they are in their recovery journey.

We offer Recovery Capital Assessments and Recovery Management Plans through the Faces and Voices Recovery Data Platform at the Pinellas Peer Respite Center, nicknamed the Catchers Mitt. Thanks to a generous donation from BayCare Hospital, The Peer Respite provides a 3 – 14 day stabilization of care for persons who do not meet the requirements of a medical detox, and do not have the income to check themselves into a private facility.

Outreach Campaigns, inspired by our previous subcontracts with Central Florida Behavioral Health Network, such as the >5% Campaign and the Recovery Starters Kit, have born the Recovery Round Tables throughout Tampa Bay, Narcan distribution efforts that have been responsible for numerous overdose reversals, and homeless outreach events that reach persons who need it the most.

Brief History



- REF has been providing community connection events, free Narcan and training, as well as access to individual and group support since 2017. Since opening, we have supported the recovery journey of hundreds and been a leading advocate for our community to become more recovery focused and less acute-care-focused.
- Since 2021, Recovery Epicenter Foundation has been privileged to provide peer support and outreach services to the Tampa Bay Region thanks to funding from our managing entity Central Florida Behavioral Health Network. That funding ended on June 30th of 2023.
- We are a board of directors and staff comprised almost entirely of persons in recovery ourselves.



Homeless Outreach

The First Saturday of Every Month!

- Recovery Epicenter Foundation organizes our recovery community to give back to persons less fortunate than us. With homelessness being a part of many of our members' stories, this process inspires community involvement and a collaborative effort that multiple organizations can support.



Street Outreach

Next: June 3, 2023

Intersection of US19 and SR 52

Behind McDonald's

DONATIONS NEEDED

RECOVERY STARTER KITS:

- Toiletries
- Toilet Paper
- Sunscreen / Bug Spray
- First Aid Supplies
- Tote Bags/Backpacks
- Feminine Hygiene Supplies



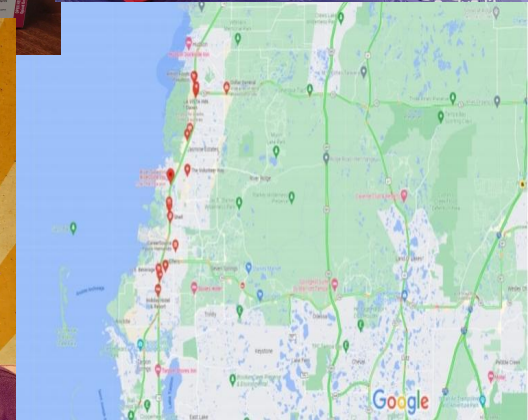
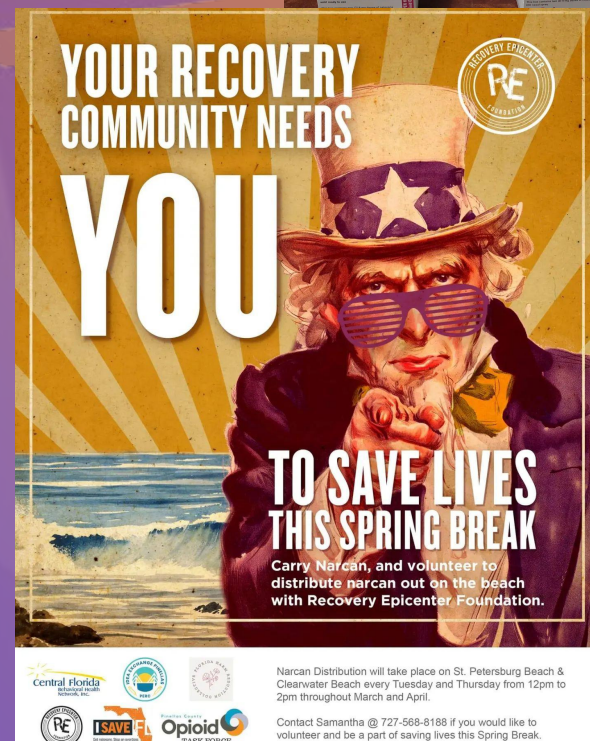
SPONSORED BY





Narcan Outreach

- Began as the Gideon Narcan Policy, which intended to get a box of Narcan into every hotel and motel end table next to the bible, our Narcan distribution efforts have grown to encompass multiple festivals, an informational video, numerous local news stories highlighting saturating areas that suffer from overdoses repeatedly, and the development of community maps. Today the #notonemorelife campaign is responsible in large part for civilian Narcan use growing to a third of all Narcan use in the Tampa Bay Region.





Training Opportunities

- Since inception, Recovery Epicenter Foundation has been offering the community trainings on multiple issues important to the Recovery Community. Here are just a few of the events we have been a part of and a few we have upcoming.

**LEARN
HOW TO
SAVE LIVES**

FREE NARCAN AWARENESS
JULY 24th
1PM
8610 Galen Wilson
Port Richey, FL 34668

RECOMMENDED FOR
Those likely to come into contact with a person experiencing an overdose:
First responders, hotels,
restaurants, etc.

TIPPING THE PAIN SCALE

ASAP'S 3RD ANNUAL OPIOID
END THE STIGMA
JOIN US FOR A VIEWING OF "TIPPING
FOLLOWED BY A PANEL DISCUSSION
COMMUNITY LEADERS WORKING TO

Wednesday, June 14, 2023
Starkey Ranch Theatre Library Cultural Cen
5:00pm- 8:00pm

PHSC **BayCare** **Central Florida**

**MOTIVATIONAL
INTERVIEWING**

Taught by
AHEC GULF COAST NORTH
AREA HEALTH
EDUCATION CENTER

LEARN TO:

- Empower your participants
- Resolve ambivalence
- Eliminate barriers to change

AUGUST 31ST, 2023 11AM-12PM

8610 Galen Wilson Blvd.
Port Richey, FL 34668

**FREE
CE'S**

One Brother One Sister
HELPING THOSE WHO CARE FOR SO MANY...
ONE BROTHER ONE SISTER IS A PROGRAM OF THE ADDICTED COMMUNITIES COALITION
A NATIONALLY RECOGNIZED 501(C)3 NON-PROFIT ORGANIZATION.

KARYN HURLEY
SCOTT JONES

TO RESERVE YOUR SEAT, PLEASE CONTACT
KARYN HURLEY 786-514-0893
MARIANNE DEAN 727-568-8193

CERTIFIED INTERVENTIONIST COURSE
THE CERTIFIED EVENT INTERVENTIONIST COURSE INCLUDES
MORNING COFFEE WITH SNACKS, COMPLETE TRAINING SESSION,
PROVIDED LUNCH, AND FINAL EXAM.

ONE DAY TRAINING EVENT
AUGUST 29TH 2023 8:30AM - 4:00PM

Training Location: Pinellas Health Dept.
8751 Ulmerton Road, Largo, FL 33371
Mid-County Location, 2nd Floor

Our Training Sponsors
Florida HEALTH Pinellas County
RECOVERY EPICENTER FOUNDATION
WEST CARE

ATC PARTNERS
ATC is a proud approved education provider for NAACAC and The Florida Certification Board
Intervention Course Carries 6 CEUs

**NATIONALLY CERTIFIED
INTERVENTIONIST COURSE**

The Event Intervention course will provide training in the following areas:
• Adaptable Communication
• Addiction Treatment Protocols
• Recognizing Issues
• Building Rapport
• NLP Skills
• Body Language
• De-Escalation Techniques
• Treatment Support Roles

Training Sponsor:
Recovery Epicenter Foundation
Will Atkinson
813-419-7095

Lunch Sponsor:
US Worldmeds®

APRIL 18TH, 2023
8:30 am - 4:00pm
Training Location Host
Pinellas Health Dept.
Mid-County Location
8751 Ulmerton Rd.
Largo, Florida 33771

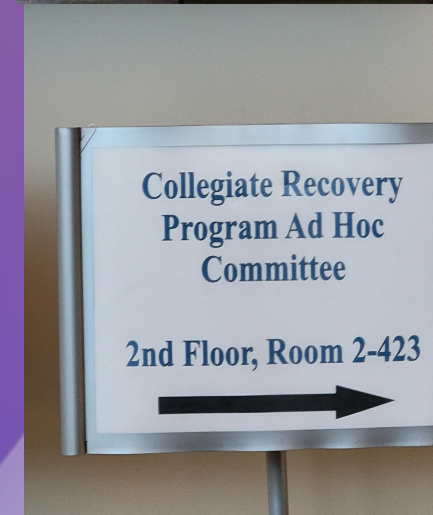
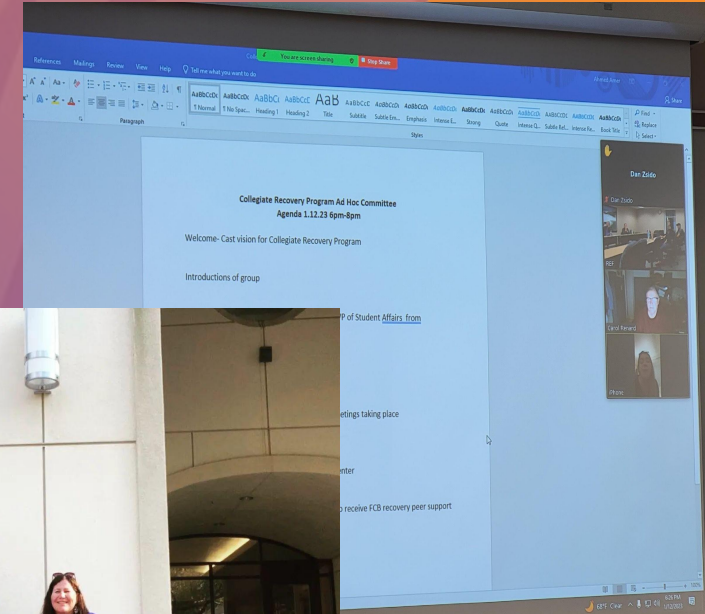
The Certified Event Interventionist course includes Morning Coffee with snacks, Complete Training Session, Provided Lunch, and Final Exam.

\$275.00 per person
Contact : Karyn Hurley at 786-514-0893



Collegiate Recovery Programs

Recovery Epicenter Foundation has been blessed to have numerous interns from Saint Petersburg College over the years. And, thanks to that connection, REF began offering a peer support worker to the students of SPC at the Gibbs Campus in February of 2023. Since that time we have grown the effort to include Gibbs and Clearwater Campus, and we are about to start the same process with Eckerd College. The intent is to develop more opportunities for students to access peer support services and eventually gain their internship hours as peer support trainees, building the Collegiate Recovery Programs on site, under the supervision of a peer support worker dedicated to the health and wellness of the student recovery community.





Peer Respite Center “The Catcher’s Mitt”

- Thanks to a generous donation from BayCare Hospital, the Recovery Epicenter Foundation is now able to provide peer respite services to persons who do not meet the medical threshold for care, and do not have the means to check themselves into a facility. This project epitomizes the principle of help being available when a person is asking for help.
- Since opening in March of 2023, we have provided peer respite services to over 130 participants, connecting the majority back to a sober living home, some to higher levels of care, and only “losing” 13% thus far to an active use cycle.
- Food is provided for free by local food banks, and clothes are available for the participants.
- We have developed through experience, a ratio of one peer support worker per every 10 participants.



The **CATCHER'S MITT**

The Catcher's Mitt is a peer-led 3-7 day recovery community assessment, observation, and recovery support service. We serve those who do not qualify for medical detox, hospitalization, or simply lack the funds for private treatment.

The Mitt offers its participants a home-like environment. We provide 24/7 peer support as they transition from active use to post acute withdrawal.

Key Components

24-Hour Peer Support

Daily Recovery Support Groups

Daily Recreational Groups

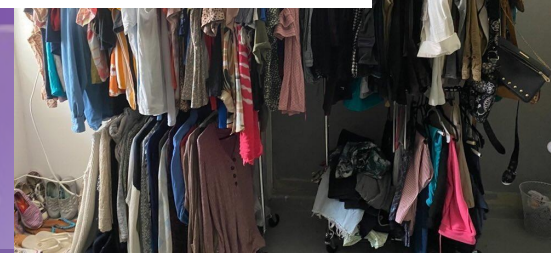
Linkages to Longer-Term Housing and Community Supports

Linkages to Ongoing Therapies and Services

Recovery Management Plans and Recovery Capital Assessment Baselines Established



www.RecoveryEpicenterFoundation.org 1(727) 223-3453
Recovery.e.Foundation@gmail.com | www.facebook.com/RecoveryEpicenter





Recovery Round Tables

- Began in March of 2022 in Pasco County, in large part due to Central Florida Behavioral Health Network no longer allowing us to provide peer support services without LMHC or LCSW supervision, the Recovery Round Tables were our first major community event campaign. We began with the engaged Pasco community and expanded to the Hillsborough community. We turned over the Hillsborough Round Table to the Hillsborough Recovery Coalition, an emerging RCO, in January of 2023. Attempts at duplicating our success have been seen in the development of a Pinellas County Round Table and continue to inspire others across the Tampa Bay area. The intent was and remains connecting community stakeholders together to close gaps in the substance use disorder continuum of care. When we talk to one another, we accomplish together what none of us can achieve individually.



We Started Here! March 2022



And Now We're Here
Aug 2023





Community Events

- Recovery Epicenter Foundation is dedicated to building and maintaining the recovery infrastructure of the Tampa Bay Region, and that includes hosting regular activities for the recovery community.
- It is with regular and persistent effort, that we can demonstrate to participants that the recovery way of life is more desirable than the life that stopped being exciting and fun long before we were ready or willing to accept help for our substance use disorder.



RECOVERY EPICENTER FOUNDATION PRESENTS

BASEBALL TOURNAMENT

SOBER HOMERUN!

REAL RECOVERY VS NEW MOTIVES

KOALA HOUSE VS ARC

SUNDAY JUNE 26TH
11AM- 3PM

SOUTHWEST RECREATION COMPLEX
13120 VONN RD
LARGO, FL 33774

Equipment and water provided

Recovery Movie Night!

JOIN US TO WATCH BACK TO THE FUTURE
Only 40 seats available

March 27TH 2021 7:00 PM

AMC Woodlands Square 20

PLEASE RSVP TO: [Contact Info] by March 20th, 2021
Only those who RSVP will be allowed to the event.
On-site to [Contact Info] for [Contact Info] for the recovery event.

RECOVERY EPICENTER FOUNDATION PRESENTS

JOIN US ON THE FIELD

SUNDAY, NOVEMBER 27TH AT 1:00PM

TICKET PRICE IS \$50 WHICH INCLUDES

- Statewide Recovery Day Meet-Up at 11:00AM In The Miami Open Tennis Grandstand
- Post Game ON The Field Photo-Op For Our Groups
- Each Group Member Receiving a Miami Dolphins Recovery Day T-Shirt

Life Changing Recovery Ministries

COMMUNITY COOKOUT AND PICNIC

Saturday, September 3rd at 5:00 PM

Welcoming Introductions & Bible Study With Senior Pastor AL Duncan!

Recovery Epicenter Foundation Community Center
1270 Rogers Street Clearwater, FL

"Hold onto God's unchanging hands"

Life Changing Recovery Ministries



RECOVERY EPICENTER FOUNDATION PRESENTS

Sober Homerun!

A sober living community softball game

ARC VS NEW MOTIVES

SUNDAY, JUNE 5 2022,
11 AM - 1 PM

SOUTHWEST RECREATION COMPLEX
3120 VONN RD., LARGO, FL 33774

EQUIPMENT AND WATER PROVIDED

RSVP WITH PETE BY MAY 27

Recovery Epicenter Foundation

Next Steps

- #1 Developing contingency management software which positively reinforces the behavioral modification we are aiming for when helping a person with substance use disorder survive the disease of an active, and too often, terminal addiction.
- #2 Gaining access to existing supports which have been denied to the peer support field and organizations in the Tampa Bay Region, such as transitional living or treatment vouchers that support persons who no longer have the financial means or family support to access recovery stabilization.
- #3 Continuing to expand upon existing community events so that harm reduction strategies become the norm and not that exception to the abstinence expectation.



**THE WAY TO GET
STARTED IS TO
QUIT TALKING
AND BEGIN
DOING.**

Walt Disney

THE TEAM



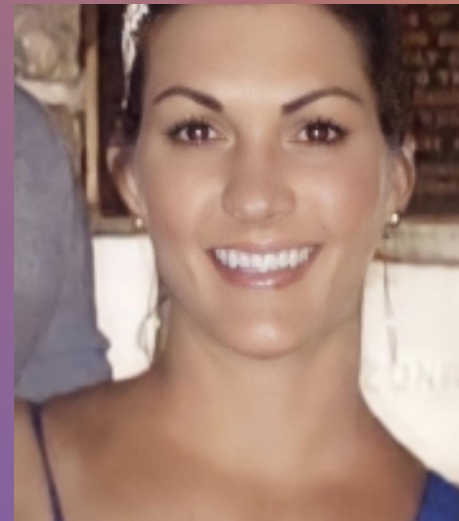
RECOVERY EPICENTER FOUNDATION



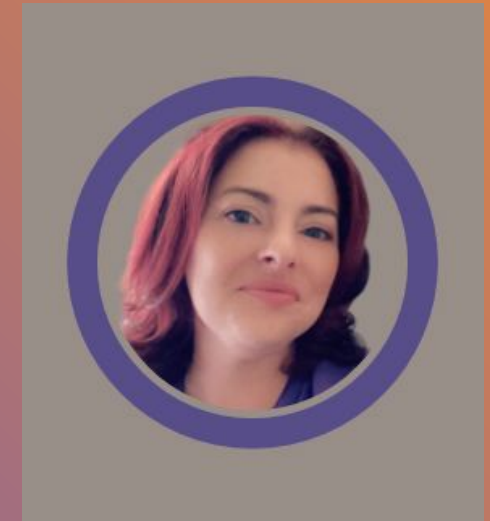
William Atkinson
Executive Director



Lindsey McKeown
Director of Operations



Teresa Mancuso
Director of Peer Respite



Amy Hicks
Regional Director of
Outreach Services

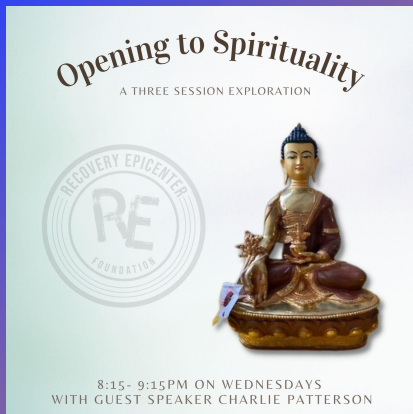


○ IN SUMMARY

Recovery Epicenter Foundation is available to provide peer to peer Outreach Recovery Support for any person or program seeking assistance and will continue to provide Recovery Support with the participants we are already working with daily. With all of us, together, we will end overdose deaths in our area by connecting people with a substance use disorder to services that assist the recovery process.

+

○



THANK YOU

- William Robert Atkinson
(Executive Director)
- will@recoveryepicenterfoundation.org
- www.recoveryepicenterfoundation.org