

# BDC Inc.

## Combustion Solutions for Industrial Applications



**B**DC Inc. is a company that wears many hats when it comes to combustion.

The company serves as a manufacturer's representative to several businesses and maintains a large inventory of combustion products. BDC designs custom turnkey assemblies and engineered systems tailored to specific applications. And the new IHEA member also provides ongoing field service to keep its customer's operating in peak form. So, you could safely say BDC does a bit of everything.

Originally founded in 1946 as a manufacturer's representative of Eclipse Fuel Engineering and Rockwell Heat Treating Furnaces, the company became BDC (Burner Design and Control) 30 years later when it was purchased by an employee group. The group's mission in 1976 was to become the predominant source for environmentally sound, cost-efficient industrial combustion equipment.

Despite a couple of ownership changes – including in December 2016, when David Baumstark purchased the company – that mission hasn't changed much over the ensuing 40 years. Today, BDC has over 50 full-time employees and proudly serves any industry that requires combustion, including metals processing and automotive. The

company focuses on the application of fuel-fired equipment for manufacturing. BDC has assisted in the development of several patented processes with clients, and its experience in the safe and efficient use of combustion equipment has allowed it to become a market leader.

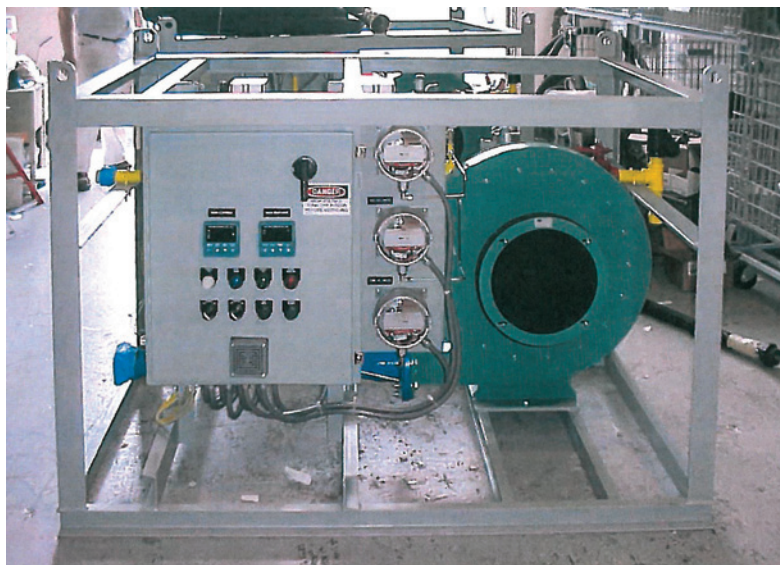
BDC's 25,000-square-foot headquarters in Hazelwood, Mo., serves as its central warehouse and fabrication facility. The company also operates a 3,200-square-foot facility in Kansas City, Mo., and a sales and service office in Decatur, Ill. In addition to IHEA, BDC is a member of the National Fire Protection Association (NFPA), the Instrument Society of America (ISA), the Measurement and Control Association of America (MCAA) and the American Society of Mechanical Engineers (ASME).

The product lines carried by BDC are many and varied. They include: gas and oil burner accessories (Eclipse, Hauck, Maxon); flame supervision components and burner-management systems (Eclipse, Honeywell, Protection Controls, Siemens); modular gas safety shutoff valves, regulators and pressure switches (Karl Dungs, Siemens); flow metering systems for fuel gas, air, steam, oil and water (Dresser/Roots, Fox Thermal Instruments, Honeywell); thermocouples, RTDs and transmitters (Pyromation); air-to-air heat exchangers (Exothermics); and process controllers, pressure transmitters and data-acquisition recorders (Honeywell).

What makes BDC unique, however, is that it is one of a select few suppliers of industrial heating equipment that can bundle a complete solution to fit its client's needs. This includes specialized safety and control systems, start-up and commissioning services, and ongoing post-sale field support.

In fact, BDC believes the market for field service and engineered-to-order solutions comprising equipment from multiple manufacturers combined into a single bundled unit will grow substantially in the years to come. As a result, the company intends to add staff, territory and products to support that area of business.

Visit [www.goBDC.com](http://www.goBDC.com) for more information on BDC Inc.



Packaged burner-management skid includes control enclosure with temperature control, flame supervision, combustion air blower and safety equipment