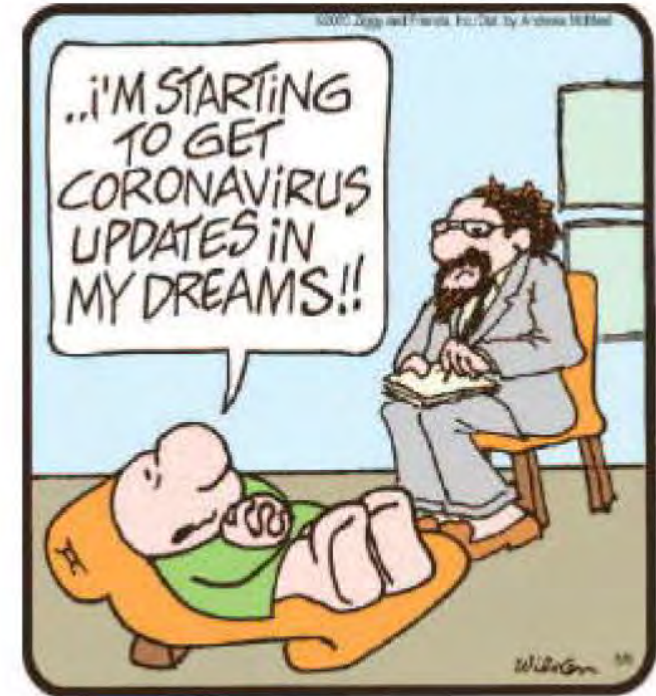


- We will begin in a moment.
- Remember your online etiquette.
- Update your name – library
- Please use your camera for the sharing portion. AND be mindful of what is on camera. We have seen some things we are sure folks did not intend for all to see.
- Please remain muted unless you are speaking.
- Please use the chat function to share ideas or questions.

ZIGGY



May 6, 2020

PUBLIC LIBRARIES ALL STAFF UPDATE #IN This Together

Indiana Library Federation leads, educates, and advocates to advance library services for the benefit of Indiana residents.



GOALS OF THIS SESSION

- **Status update** – State of Indiana, Indiana’s public libraries, and ILF’s supports for all staff and volunteers during the COVID-19 global pandemic
- **Sharing of concerns** – what we heard through Networking and Sharing sessions held every day March 16 - May 4, and other organizations
- **Outlook for future** – health, economic, political, environmental, societal
- **What you can do**– ways you can help to lead your communities to recovery and to lead your libraries to thrive into the future

STATUS UPDATE

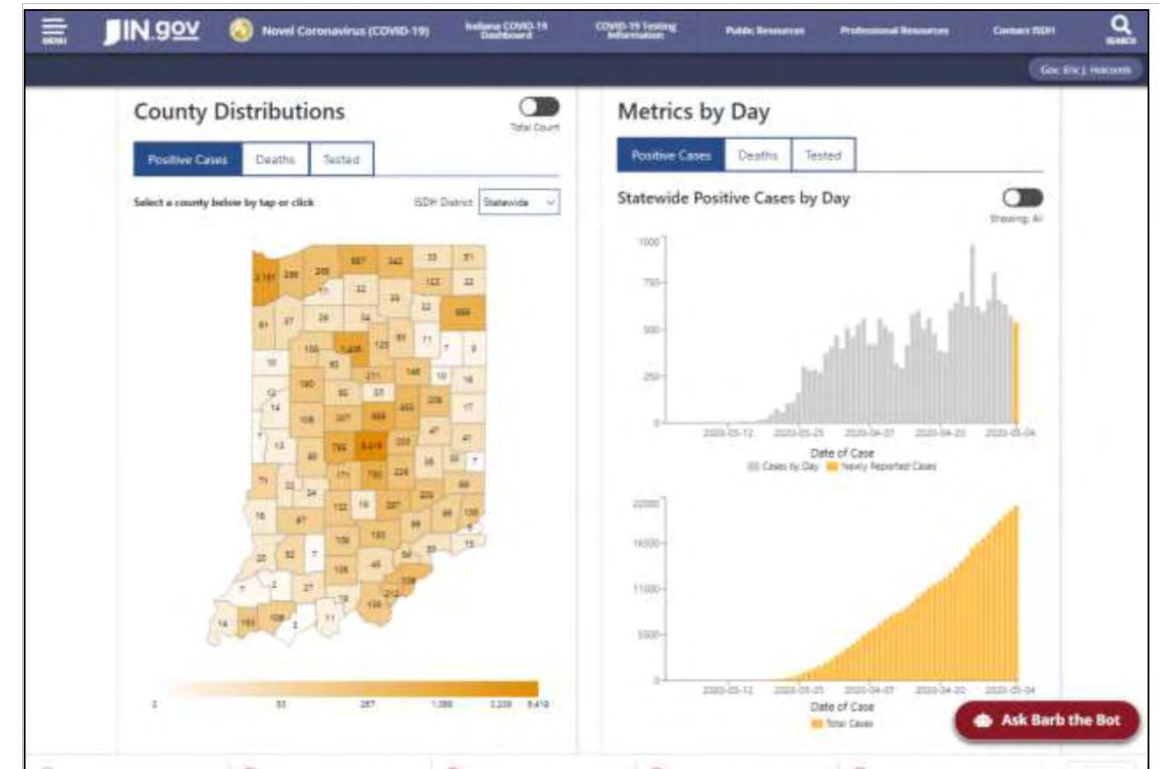
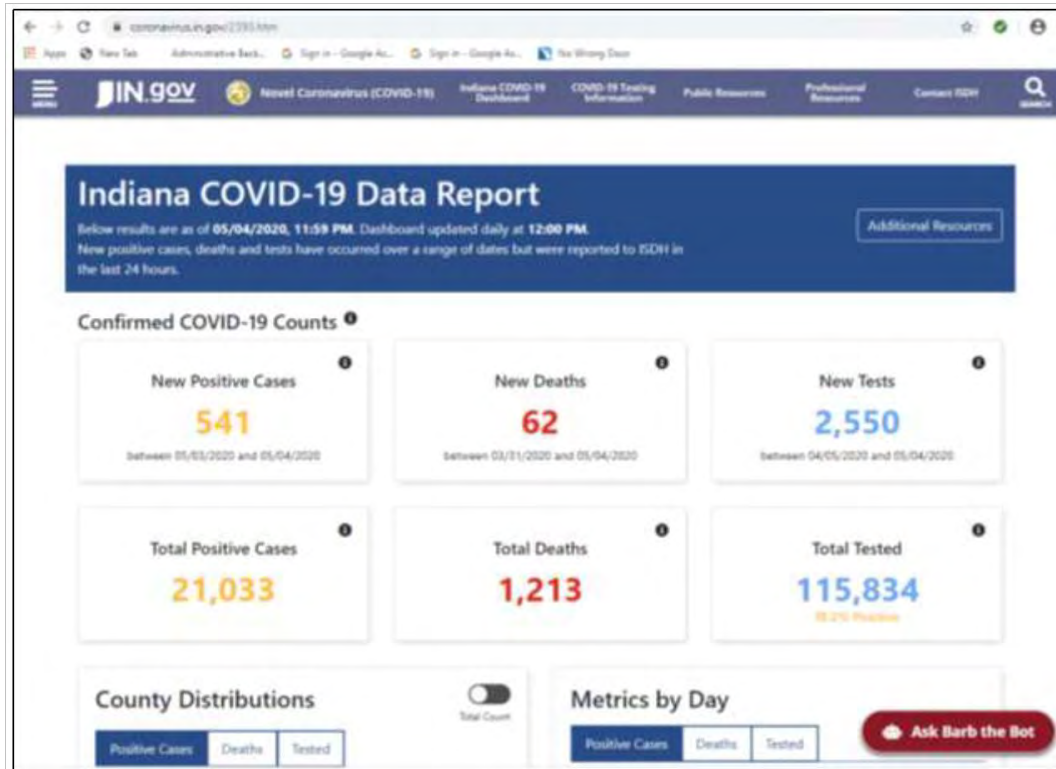
COVID-19 impacts

The COVID-19 global pandemic will have dramatic and lasting impacts on communities, and thus on libraries.

- Loss
- Disruption
- Change
- Opportunities



DAILY UPDATES FROM ISDH



<https://www.coronavirus.in.gov/>

Indiana Library Federation leads, educates, and advocates to advance library services for the benefit of Indiana residents.

BACK ON TRACK INDIANA



<https://backontrack.in.gov/>

Indiana Library Federation leads, educates, and advocates to advance library services for the benefit of Indiana residents.

WHAT'S OPEN, WHAT'S CLOSED

WHERE WE ARE GOING
STAGE 2

BEGINNING MAY 4TH

STAGE 2 MAY BEGIN MAY 4 FOR ALL INDIANA COUNTIES EXCEPT: Cass, Lake, and Marion counties.
STAGE 2 MAY BEGIN ON MAY 11 FOR: Lake and Marion counties.
STAGE 2 MAY BEGIN ON MAY 18 FOR: Cass County.
Please note that local governments may impose more restrictive guidelines.

GUIDELINES FOR ALL HOOSIERS

- Hoosiers 65 and over and those with high-risk health conditions should remain at home whenever possible. This is the population that is most vulnerable to the coronavirus
- Recommend that residents wear face coverings in public settings. Residents also should continue to practice social distancing and good hygiene
- Social gatherings of 25 people may take place following the CDC social distancing guidelines. The coronavirus is often spread among groups of people who are in close contact in a confined space for an extended period of time. This limit applies to such events as wedding receptions, birthday parties, Mother's Day gatherings, and others where people are in close physical contact for extended periods of time
- Essential travel restrictions are lifted; local non-essential travel allowed
- Continue remote work whenever possible

RELIGIOUS SERVICES - MAY 8

- Religious services may convene inside places of worship. There are specific practices that should be considered for in-person services that are driven by social distancing guidelines and protections for those 65 and older and individuals with known high-risk medical conditions. Examples of services include weddings, funerals, and baptisms. See the Revised Guidance for Places of Worship for more complete details

WHAT OPENS

- Manufacturers, industrial operations, and other infrastructure that has not been in operation may open following OSHA and CDC guidelines. General guidance for these industries may be found in this document
- About half of the state's Bureau of Motor Vehicle branches will open with services by appointment only; the remainder of branches will continue to open over the next two weeks
- Public libraries may open according to their own policies and CDC guidelines


PHASING IN LIBRARY SERVICES

Public libraries are specified in **Back On Track Indiana Plan Stage 2**, and **Executive Order 20-26**, which gives Indiana's public libraries the ability to phase in services according to local needs, staff capacity, and the community's situation.

- Staffing
- Hours
- Limited access to physical spaces
- Requests of guests/customers
- Curbside or Grab-and-Go, Document services, Appointment only services

American Library Association. The State of America's Libraries 20 Report from the American Library Association. Steve Zalusky, ed. <http://www.ala.org/news/state-americas-libraries-report-2020>

Indiana Library Federation leads, educates, and advocates to advance library services for the benefit of Indiana residents.



May 1, 2020

Indiana Library Federation Appreciates Governor Holcomb's Recognition of Public Libraries in Plan

Earlier today, Governor Holcomb outlined his five-stage [Back On Track Indiana](#) plan to resume services in phases between now and July 4. In March, Indiana's 236 public libraries closed their public spaces in order to prevent community spread of the coronavirus.

Indiana Library Federation sincerely appreciates **how public libraries are specified in [Back On Track Indiana Plan Stage 2](#), and [Executive Order 20-26](#), which gives Indiana's public libraries the ability to phase in services according to local needs, staff capacity, and the community's situation.** Indiana's public libraries are governed by local library boards, who with the library director, develop plans for reopening in phases. Local officials may issue more restrictive guidance. For example, libraries in Marion, Lake, and Cass counties will follow a longer time horizon to reopen.

What does the Executive Order 20-26 mean for Indiana's public libraries?
E.O. 20-26 means that libraries may begin phasing in additional services to serve their communities. Indiana's libraries will continue to evolve their services, as they have throughout the pandemic. Libraries have been providing these important services:

- **Internet Access** - Over 350 library branches extended Wi-Fi to the parking lots. See <https://www.ilfonline.org/page/Wi-Fi-map>.
- **E-Resources** - Public libraries expanded electronic resources, including digital library cards to allow 24/7 access to quality sources of educational and recreational reading, videos, music, games, virtual storytimes and programs, and skill-building classes.
- **Ask-a-librarian** continues through the telephone and email.

As libraries phase in services, the library experience will be different for staff, residents, and community partners than in pre-COVID-19 times.

- **Staffing** - Indiana's library staff are its most valuable resource. Some staff will begin returning to library buildings, while other staff may continue teleworking. Library staff follow guidance from the CDC and new processes to maintain health and safety for all. Staff may work in shifts or teams to limit contacts. Staff may wear masks, and for some activities, gloves. *While we may look different, we are friendly and eager to serve.*
- **Hours** - Library hours may be limited due to staff availability and scheduling. The time at or in the library may be limited by the activity (pickup, appointment, document services). *Online resources will continue 24/7.*
- **Limited access to physical spaces** - For the foreseeable future, most libraries will continue to restrict access to most or all of the library facilities, including meeting spaces, seating areas, and computer labs. Libraries follow guidance about the number of people per square foot, continued social distancing, and elevated sanitation practices. *Staff and guest safety is a priority.*
- **Requests of guests/customers** - Libraries may designate specific restricted areas for parking, entry, walkways, and interactions with library staff. Libraries may require guests to wash hands, wear masks, and to follow other protocols. *We respectfully ask for your cooperation.*
- **Curbside and other services** - Libraries are in various stages of planning to offer curbside or grab-and-go pickup, document services, or appointments for individuals

Indiana Library Federation leads, educates and advocates to advance library services for the benefit of Indiana residents.
911 E. 66th St., Suite 250 Indianapolis, IN 46240 317-257-2040 ilfonline.org

SHARED CONCERNS

WHAT WE HAVE HEARD/OBSERVED

Academic and school librarian shared concerns –

- Faculty and students unprepared for 100% online
- Digital divide—including for faculty
- How to get books and materials back safely
- Want to be back in library; fears of not returning in fall

Academic –

- Advance notice would make it easier to plan
- Declining enrollment and cost-cutting anticipated in next year
- Potential for increased enrollment in poor economy

School

- Teachers stressed about not achieving instructional goals
- Parent and privilege divide – how remote learning works for some and not for others
- Children with special needs are not getting appropriate education or services
- Potential for increased abuse, neglect, hunger, adverse childhood experiences
- Many youth picked up jobs to support families; cannot do eLearning while working full-time
- Possible school librarian job losses with anticipated cuts

WHAT WE HAVE HEARD/OBSERVED - PUBLICS

Concerns about Library Workforce – how to support remote work, high-risk and over 65 staff, some staff are challenged with remote/telework or whose job may not translate, current skills may not match coming needs, retirements and loss of institutional knowledge

Mental health – stress and resilience factors, anxiety, additional pressures of family at home, job loss in household, eLearning, losses and grief

Worried about residents – library as a lifeline, seniors, youth, job loss

How library services change – current services may not match community needs, unprepared for virtual everything, safe collection handling

Politicization of everything – when to reopen, wearing a mask, books, services, use of taxpayer funds

Role of libraries in future – *What if? Scenario planning.* Related to broadband, space, special populations, another surge, stay-at-home, or other type of pandemic, etc.

What other concerns do you want to share?

What else should we be aware of?

WHAT WE HAVE *ALSO* OBSERVED

Innovations and creativity

Empathy for Hoosier neighbors

Work ethic

Public servant hearts

Resilience – *We will get through this!*



Downloadable eBooks & audiobooks,
streaming movies and shows,
online tutorials,
and so much more
available with your
GPL Evergreen library card!

Visit our website to learn more
www.greenwoodlibrary.us

ONLY OUR DOORS ARE CLOSED

GPL
Greenwood Public Library

National Library Week 2020

LIBRARY SERVICES = AVAILABLE


OUR BUILDINGS ARE CLOSED, BUT WE'RE STILL HERE FOR YOU.

- Read ebooks & magazines.
- Listen to audiobooks.
- Stream movies & music.
- Engage on social media.
- Ask librarians your questions.

Library
HOUSING CHANGE. TRANSFORMING LIVES.

Crown Point Library
Published by Laura Zato-Clemons [?] · Yesterday at 4:58 PM ·

Inspired by Sip Coffee House and Blue Pear Mercantile the Library decided to join in on encouraging our community. In the words of Pete The Cat "Keep walking and singing your song. It will all be groovy again!"



#D Discover SPRING 2020

***WHO DO YOU KNOW THAT NEEDS A LIBRARY CARD?**

FEATURED EVENTS BOOKMARK THIS!

THE ADVENTURES OF LIBRARY LION
Follow us on Facebook, Twitter, & Instagram to watch the Adventures of Library Lion as he grows the empty library looking for a little adventure & fun.

WATCH IT GROW!
SPRING READING CHALLENGE
Springtime is a time of growth & new life! Let's join together to celebrate the budding spring season & our Library community with a Spring Reading Challenge.

WATCH IT GROW!
Record reading minutes, review books, collect Plant Badges & earn tickets to use toward future prizes through our online reading app. Beasback:
<http://bit.ly/ZPLBeasback>

HUSSEY-MAYFIELD MEMORIAL PUBLIC LIBRARY
ZIONSVILLELIBRARY.ORG

MORE THAN A BUILDING!
DISCOVER THE EVENTS & SERVICES WE HAVE FOR YOU TO ENJOY

Our Library is much more than a building. It's a team of people dedicated to providing the most up-to-date & relevant entertainment, educational opportunities, & fun events for local residents. Even while we are all practicing social distancing, your Library staff is offering new ways for you to stay connected. You can find everything on our website: <http://ZIONSVILLELIBRARY.ORG>.

***A LIBRARY CARD WITHIN 24 HOURS**
Visit our Get a Card page at <http://bit.ly/HMMPLCard>, fill out the application, & all eligible applicants will receive an email within 24 hours with their new, personal Library Card information. All ages are welcome to receive a card.

FREE STREAMING & DOWNLOADABLE SERVICES
Several new online services have been added to the Library's website so residents may discover an almost endless supply of eBooks, audiobooks, videos, music, graphic novels, classes & so much more! Visit our Digital Library Branch at <http://bit.ly/HMMPLDigital> to see all 48 services now available!

HOW OFFERING TUTOR.COM
Don't miss our latest service in our Digital Library Branch, Tutor.com! Your Library Card provides you with: free, live tutoring assistance for students in Grades K - early college, plus adults; Career and resume guidance; Document drop-off or immediate one-on-one assistance from vetted, expert tutors in 60 subjects & test-prep areas.

MORE VIRTUAL EVENTS
Visit our event calendar to find a variety of virtual events offered by your favorite librarians. Registration will be required for some, while others may be found on the Library's YouTube channel at <http://bit.ly/HMMPLYouTube> or on Facebook Live!

Browse the list of virtual events on the next page or visit our Event Calendar at <http://bit.ly/HMMPLCalendar> for a list of our current virtual events. We'll keep it updated and you may register to receive exclusive access to many events.

Indiana Library Federation leads, educates, and advocates to advance library services for the benefit of Indiana residents.

LIBRARY SERVICES = AVAILABLE

OUR BUILDINGS ARE CLOSED, BUT WE'RE STILL HERE FOR YOU.

Read ebooks & magazines. ■ Listen to audiobooks. ■ Stream movies & music. ■ Engage on social media. ■ Ask librarians your questions.

 **Library**
GENERATING CHANGE. TRANSFORMING LIVES.

Temporary LIBRARY CARDS

Make the most of the COVID-19 closing
with online access to a plethora of great educational and entertainment options offered by your Library!

PICK UP YOURS TODAY! CONTACT US VIA:

Phone: Call us at 812-753-4212 and leave a voicemail with the required information
Facebook: Go to our page, select "Message" button and send us the required information
Email: Send it to contactus@fortbranchlibrary.com

Required Information:

- Your First and Last Name
- Phone Number
- Home/Local Address

FORT BRANCH AND HAUBSTADT PUBLIC LIBRARY



CHAT WITH US!

VIA PHONE, TEXT, OR LIVE CHAT ON OUR WEBSITE

Monday through Friday ■ 10 a.m. to 2 p.m.
Call 812.232.1113 ■ Text 812.612.8275
Visit www.vigo.lib.in.us

 **Library**
GENERATING CHANGE. TRANSFORMING LIVES.

Stay connected to your
LIBRARY
during the closure...

ASK-A-LIBRARIAN:

CALL: 317-275-4184
TEXT: 317-333-6877
EMAIL: indypl.org/contact
(Staff available during regular open hours)



INDYPL.ORG BLOGS:

- Tips for using eMaterials
- Updates about COVID-19 & IndyPL

SOCIAL MEDIA:



DELIVERY SERVICE

 **Library**
GENERATING CHANGE. TRANSFORMING LIVES.



Indiana Library Federation leads, educates, and advocates to advance library services for the benefit of Indiana residents.





Alexandrian Public Library

16 mins •

APL Business Manager Monica Emerson has a not-so-secret passion... sewing! To date, she has made over 300 masks for area health care providers and staff! ❤️



Before we closed the building, staff at Lake Station-New Chicago handed off all of our Need a Read bags to Principal Worthington of Meister Elementary.

He'll be handing them out April 8 along with the free meals River Forest Schools are providing during their closure! #nwindiana



Kendallville PL on news with mask extenders



Kokomo-Howard County Public Library

April 22 at 5:01 PM •

And, yes, we are social distancing as we work on preparing YOUR Curbside Pickup items.



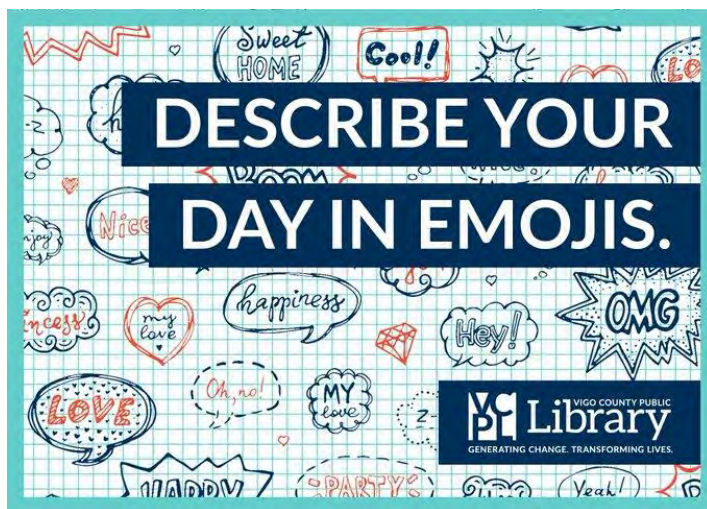
41791984089/10158041791364089/?type=3&_tn_=HH-R&eid=ARDO5jTRB14jVUmlmk6Glnk

Mundie Public Library

Thanks to a Ball Brothers Foundation Rapid Grant, MPL was able to purchase more than 30 iPad hotspots to loan to students in our MPL's 21st Century Digital Achievers (GAI) after school program. One of the GAI parents met MPL employee Katherine at Mundie Hunt Library recently to get a hotspot. Now her son can keep up with school work and learning at home during the COVID-19 crisis. More hotspots will be distributed to the GAI students soon!



Indiana Library Federation leads, educates, and advocates to advance library services for the benefit of Indiana residents.



<https://www.facebook.com/KHCPL.org/videos/852736438542328/>



Greetings from Lindblum!

Join **SJCPL Gaming** for livestreams, tournaments, & collaborative gaming events.



Brown County Public Library

Curbside Pick-up

STOP Please stay in your car

- Call 812.988.2850
- Wait for delivery
- Pick up after staff has left the area

Enjoy!

Kokomo-Howard County Public Library
April 20 at 7:58 PM · 📍

Share away. The more shares, the better. 😊

KHCPL Now Offering Curbside Pickup

Here's how it works:

- Use our website, KHCPL.org, or app to place holds on the items you want.
- No internet? No problem. You can also call any location during business hours. Call the location you want to go to, to pick up the items. KHCPL Main: 765.454.4710; KHCPL South: 765.453.4150; or KHCPL Russellville: 765.683.5112.
- When your items are ready for pickup, we'll call you and let you know the available pickup times and dates from which you can choose.
- Curbside pickup will be from 4 to 7 p.m. on Mondays, and 10 a.m. to 3 p.m. on Wednesdays and Fridays at each location.
- When you drive up, we'll put your items in the hatch or trunk of your vehicle. If you don't have a trunk or hatch, we'll set your items on a table outside.

10am - 4pm Monday-Saturday
curbside materials pickup available now!

- CALL US AT 838-3286 TO REQUEST ITEMS (10 ITEMS OR LESS TO START, PLEASE)
- WE'LL OFFER YOU SEVERAL PICK UP TIMES, JUST CHOOSE WHAT WORKS FOR YOU! PICK UP IS AVAILABLE FROM 10:15AM TO 3:30 PM, MONDAY THROUGH SATURDAY.
- WHEN YOU ARRIVE, PARK IN YOUR DESIGNATED SPOT, AND WE'LL PLACE THE ITEMS IN YOUR POPPED TRUNK/HATCH. IF YOU DON'T HAVE A TRUNK, WE'LL LEAVE THEM BY THE REAR OF THE CAR FOR YOU.

Books 2 Go

Patron Name: _____

Library staff have used a sanitizing solution on these materials before checking items out to you. That said, we also encourage you to use common sense when it comes to your own health and well-being while handling library materials:

- 🏠 Avoid touching your mouth or face
- 🏠 Wash your hands **before and after**
- 🏠 Refrain from eating with using materials

All items should be returned to our dropbox located behind the white fence. All items are quarantined for 3 days, for everyone's safety, so may not clear your account immediately. No fees are being charged for items in quarantine.

HARRISON COUNTY PUBLIC LIBRARY

CURBSIDE SERVICE

We wanted you to know that HCPL now has curbside pickup!

The Health Department has approved our plan to keep you and our staff safe.

Here's how it works:

- Use the catalog at hcpl.lib.in.us or call your library branch to place the items you want on hold
- You will receive a call when your items are ready to pick up
- Call the library when you are in the parking lot
- Staff will place your items in your trunk or on your hood

Curbside service begins May 4.

We can't wait to see you!

Harrison County Public Library

Postcard promo

Indiana Library Federation leads, educates, and advocates to advance library services for the benefit of Indiana residents.



**Bartholomew
County
Public Library**

Curbside Holds Pickup

Columbus: Monday-Saturday 12-6 PM
Hope: Monday, Thursday, Saturday 12-6 PM

Always open at
www.mybcpl.org



IT'S JUST THE BEGINNING!

WE'VE MISSED YOU!

Monday, May 11th we will begin offering
curbside service as part of our phased
reopening. Other services and details
coming soon!

WE ARE EXCITED AND KNOW
YOU ARE TOO!



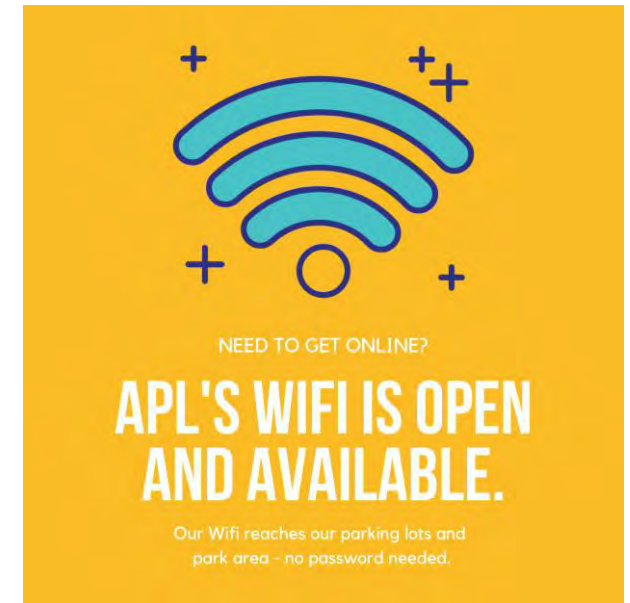


Indiana Library Federation leads, educates, and advocates to advance library services for the benefit of Indiana residents.





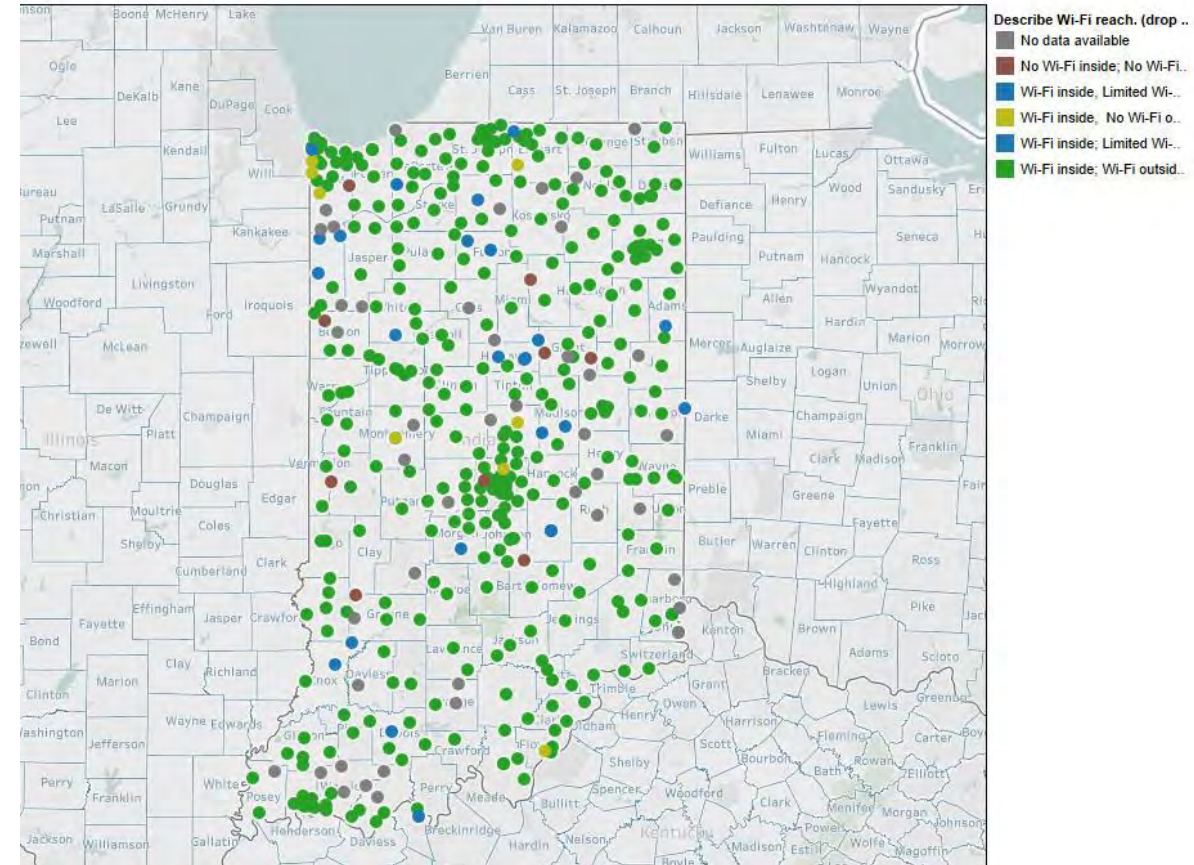
Indiana Library Federation leads, educates, and advocates to advance library services for the benefit of Indiana residents.



This report is provided by Indiana Library Federation, www.ilfonline.org, to illustrate how Indiana's public libraries responded to the COVID-19 stay-at-home orders by extending Wi-Fi beyond their buildings to meet needs in communities. Wi-Fi data last updated by 4/21/2020.

EXPANDED WI-FI TO PARKING LOTS

- Public Libraries extended Wi-Fi at **over 350 branches**
- **Distributed this map** to Governor's office, all 150 state legislators, 11 members of IN Congressional delegation, and many statewide stakeholders
- Find online at www.ilfonline.org/page/wi-fi-map



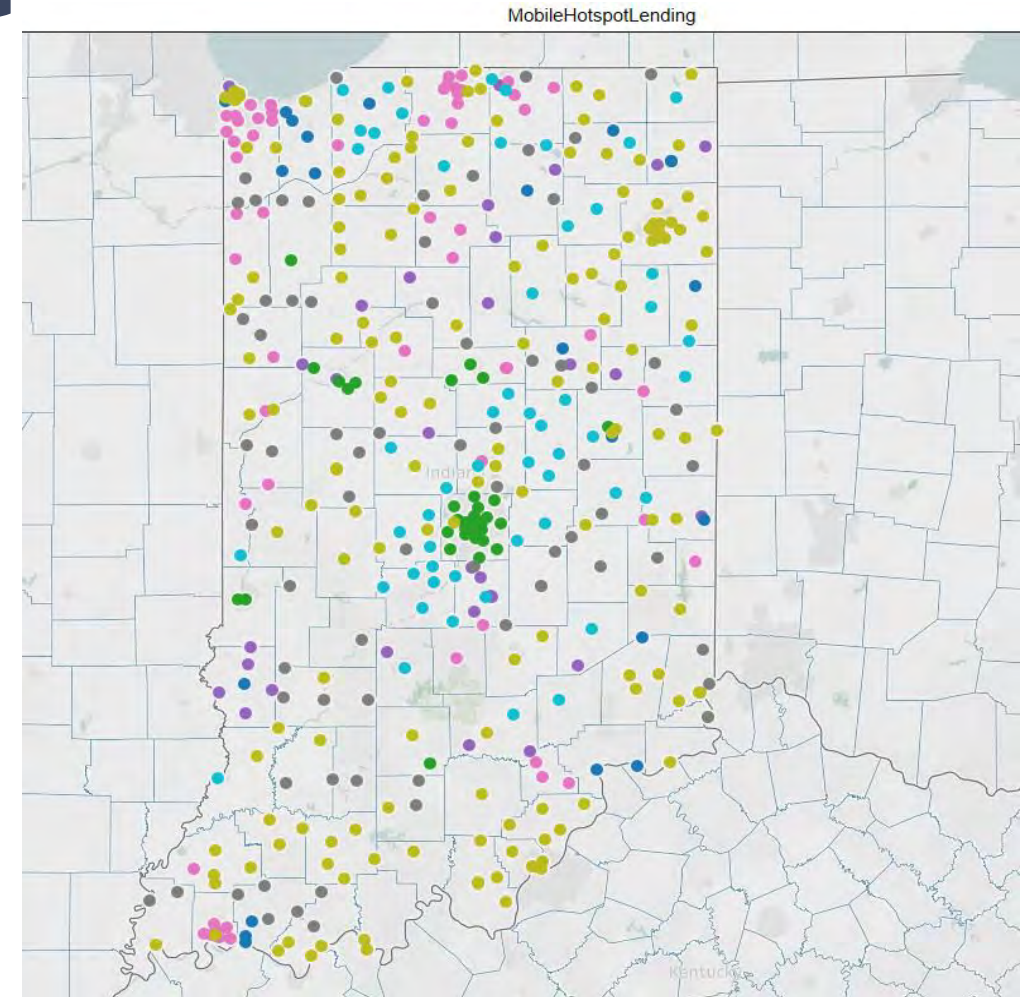
MOBILE HOTSPOT LENDING

From a survey in mid-April, 2020,

- ~1/3 maintain mobile hotspots as a part of the collection they lend (green, blue, turquoise).
- ~1/6 offer limited lending or are planning on implementing hotspot lending (pink and purple).
- Nearly 1/3 do not lend mobile hotspots and/or have no plans for it (yellow).
- An internal map for planning only

Describe HotSpot Lending (drop down)

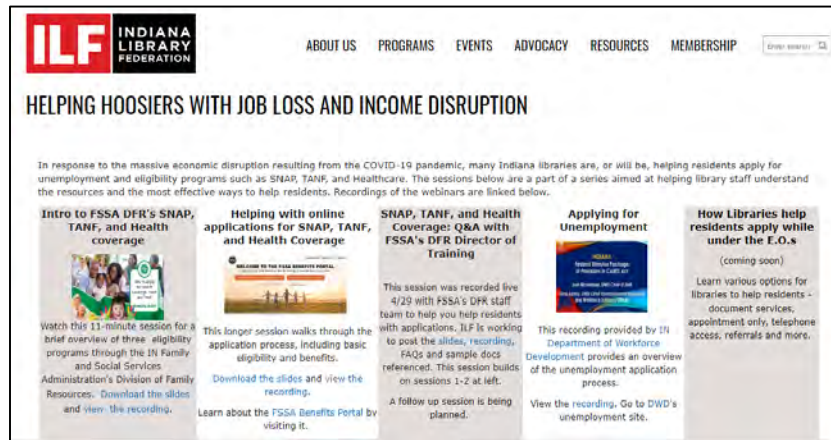
- Limited lending (6-15 hotspots)
- No data available
- No hotspot lending AND no plans for it
- No hotspot lending AND planning for it
- Regular lending (16-25 hotspots)
- Significant lending (25+ hotspots)
- Very Limited lending (fewer than 5)



APPLICATION ASSISTANCE

ILF's Helping Hoosiers Training Series

- 1,062 viewed first session by 5/5
- 674 viewed second session by 5/5
- 509 registered live training on 4/29
- Nearly 100 viewed since



<https://www.ilfonline.org/page/hh>



Applying for unemployment at Oakland City Public Library

Document Services and Application Assistance



Need Assistance?
CALL 628-3534 FOR REFERENCE HELP



Need Documents Faxed or Printed?
SEND DOCUMENTS TO BE FAXED OR COPIED
WITH INSTRUCTIONS TO
MINDY.HOBENSACK@EASTERN.K12.IN.US.
ALL COPIES WILL BE SENT BY MAIL TO
PROVIDED ADDRESS
SERVICES ARE FREE OF CHARGE

Indiana Library Federation leads, educates, and advocates to advance library services for the benefit of Indiana residents.

PHASING IN SERVICES

Curbside or Pickup

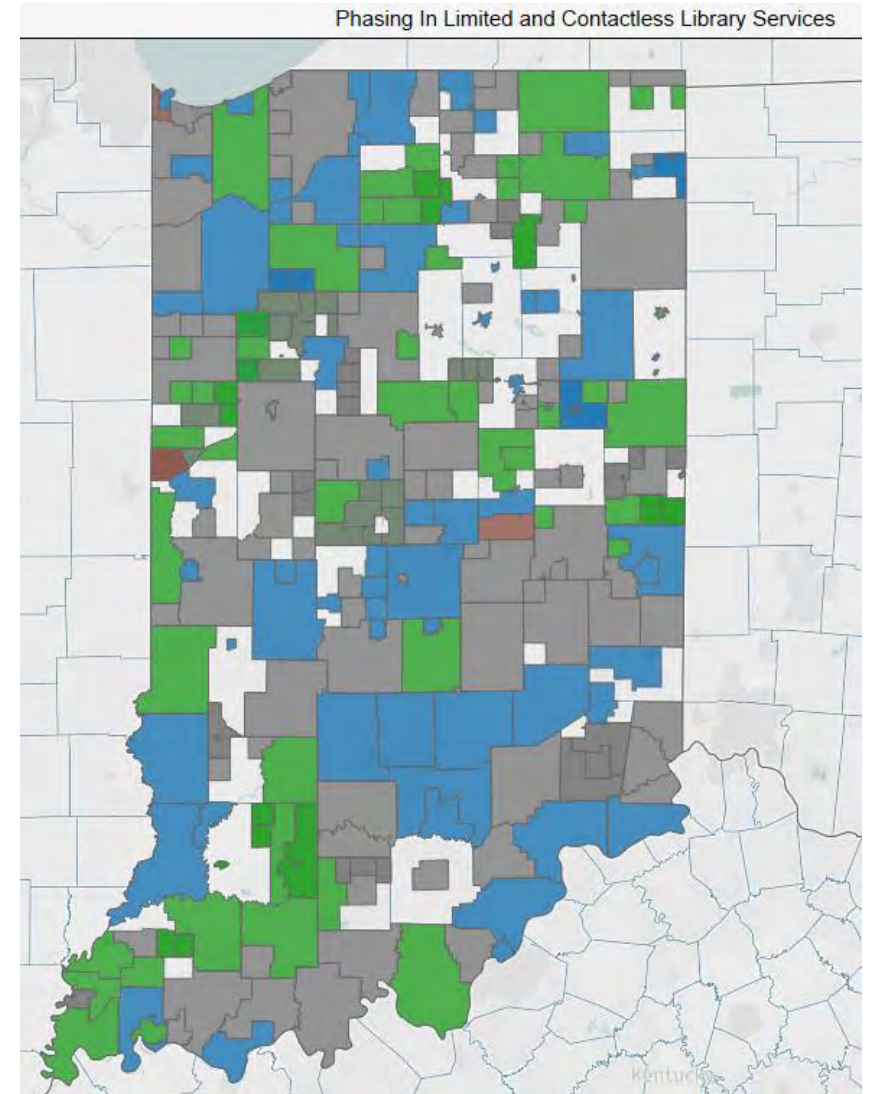
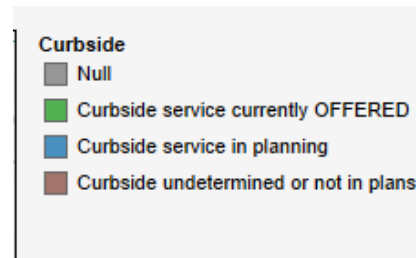
Document Services

Appointment only

Plans to reopen with limited services/hours

Internal working map

<https://www.ilfonline.org/page/reopen>



ACPL needs your feedback!

ALLEN COUNTY PUBLIC LIBRARY

• WWW.ACPL.INFO •

ACPL needs your feedback.

As we prioritize library services in the "new normal," we want to know how you have been using the library in recent weeks, how you intend to use it in the future, and what is of concern to you personally.

[Please take a few minutes to complete this short survey.](#)

We appreciate your support, and we look forward to continuing serving you virtually and in-person.

Allen County Public Library

900 Library Plz Fort Wayne IN 46802

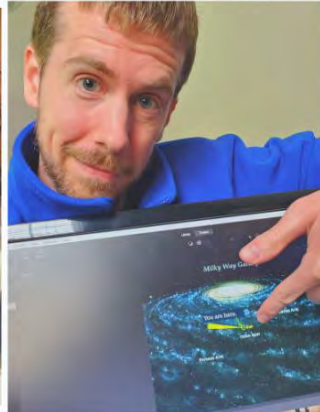


FROM YOUR FRIENDS AT ECKHART PUBLIC LIBRARY

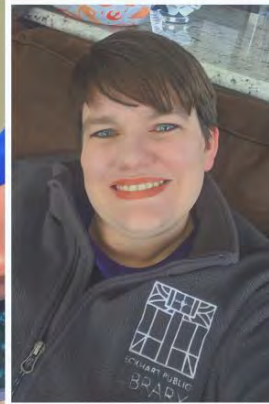
We Miss You!



Jamie



Zach



Jenny

#INThisTogether

OUTLOOK FOR FUTURE

EVERYTHING IS CONNECTED

Advocacy

Communications

Services

Economy

Technology

Politics

Environment



<https://www.ilfonline.org/page/PL2030>

HOW WILL LIBRARY SERVICES CHANGE?

PRE-PANDEMIC (2018 data)
236 public libraries with 428 branches and 25 bookmobiles
85,016 children's programs with 2,186,889 in program attendance
13,474 young adult programs
149,778 total programs with 3,280,838 in program attendance
3,280,838 total program attendance
30,836,051 total library visits in 2018
51,192,309 print materials/books
12,346,344 e-books
8,177 computers available to the public



MEETING NEEDS

- **Physical** – distribution of food, medicine, personal protective equipment (PPE); checking in on those who are isolated or with risk factors
- **Psychological** – support for those at risk or with anxiety; for those who might experience different types of stress or loss
- **Financial assistance** – help with applications and documents for unemployment, SNAP, Health coverage; job-search, skills trainings
- **Social** – ways to provide additional connections without gathering and preparation for loosening of restrictions



Maslow's Hierarchy of Needs

EVOLVING LIBRARY SERVICES

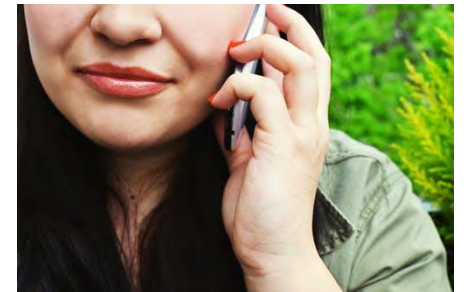
1. What does the community need and want most from the Library?
2. How directly relevant is each service to the Library Mission?
3. How many people do they serve? (current, past, potential)
4. What revenue supports the service?
5. How much staff time is required?
6. What is the impact?



WHAT YOU CAN DO

STAY HEALTHY

- ❑ Practice social distancing, handwashing, good hygiene, wear a mask
- ❑ Eat right and stay hydrated
- ❑ Exercise
- ❑ Get lots of sleep
- ❑ Turn off/avoid checking news/email for certain hours of the day
- ❑ Practice yoga & mindfulness techniques
- ❑ Contact friends and family



SHARE INFORMATION AND MODEL BEHAVIOR

BACK ON TRACK INDIANA PLAN EXPLAINED

KEY

CLOSED/VIRTUAL ONLY	ESSENTIAL ONLY	75% CAPACITY	FULLY OPEN WITH SOCIAL DISTANCING
PICKUP AND DELIVERY ONLY	50% CAPACITY	OPEN WITH RESTRICTIONS	

	STAGE 1: March 24 - May 4	STAGE 2: May 4 - 23	STAGE 3: May 24 - June 13	STAGE 4: June 14 - July 3	STAGE 5: July 4 and Beyond
Social Gatherings	10 People or Fewer	25 People or Fewer	100 People or Fewer	250 People or Fewer	250+ People Permitted
Facial Coverings	Recommended	Recommended	Recommended	Optional	Optional
Government Offices	Closed to the Public	Limited Public Access	Limited Public Access		
Manufacturing, Industrial					
Office Settings		Remote Work Encouraged	Remote Work Encouraged		
Retail					
Restaurants		May 11th			
Bars and Clubs					
Gyms					
Personal Services		May 11th*			
Entertainment and Tourism					
Religious Services		Services May Convene Following Guidelines Starting May 8th	Services May Convene Following Guidelines	Services May Convene Following Guidelines	

Note: This roadmap is subject to change based on CDC guidance and other new information. Local governments may impose more restrictive guidelines. Stage 2 will begin on May 11 for Lake and Marion counties and May 18 for Cass County.

*Visit backontrack.in.gov for more information and guidelines for reopening Indiana and industry specific guidance for face coverings, etc.

#BackOnTrack

backontrack.in.gov

This piece was created on May 4, 2020. If you see different information published on a more recent date, please use the most current recommendations.

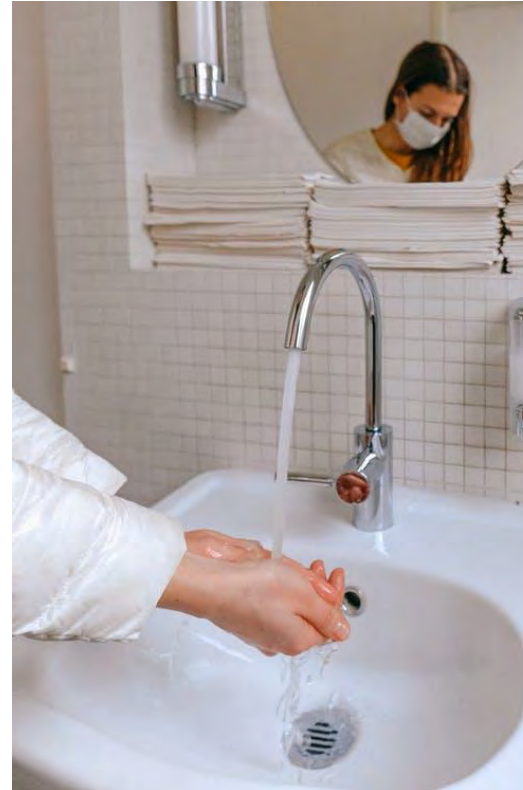
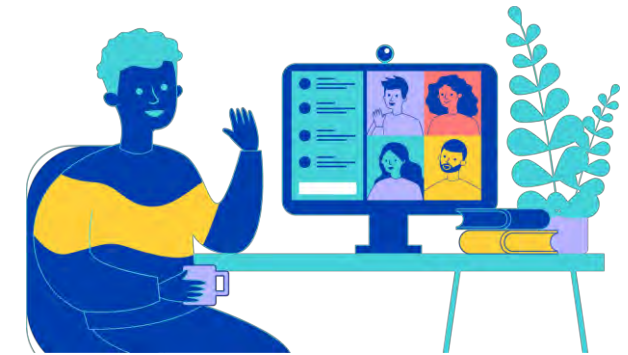


Photo Credit: Anna Shvets on Pexels.com



Bewellindiana.com

EXPAND SKILLS FOR NOW AND FUTURE

- *All other duties as assigned*
- Computer and technology – virtual everything
- Communications –
 - Channels - **telephone**, **fax**, email, chat, social media, etc.
 - Situations – empathy, conflict resolution, stress management
- Community Partnerships – collaborations, relationship building



Photos: above - Andrea Piacquadio – Pexels.com, and below - Pixabay



#IN This Together

- *How might we?*
- How may you support each other?
- How may we at ILF support you?



KEY LINKS FOR SOURCES

Indiana COVID-19 Dashboard - <https://www.coronavirus.in.gov/2393.htm>

Back On Track Indiana plan - <https://backontrack.in.gov/>

Indiana 2019 Public Library Statistics (2018 data) - <https://www.in.gov/library/5754.htm>

Indiana DWD Notices of WARN, Closures, Layoffs, Reductions - <https://www.in.gov/dwd/2567.htm>

Indiana Library Federation links

- ILF – www.ilfonline.org
- COVID-19 resources – <https://www.ilfonline.org/page/COVID-19>
- PL2030 initiative - <https://www.ilfonline.org/page/pl2030>
- Hidden COVID-19 and Reopen pages are available to anyone in Indiana library community by request