

**DUST, DUST, DUST**





## **WHAT THOUGHTS DO YOU HAVE ABOUT DUST?**

LET'S OPEN THE FLOOR FOR DISCUSSION  
WHAT YOU ARE THINKING!

**DUST is defined as: FINE PARTICLES of matter**  
**It generally consists of particles in the atmosphere that come from various sources**



# SAFETY

WE ALL WANT TO IMPROVE WORKER'S SAFETY



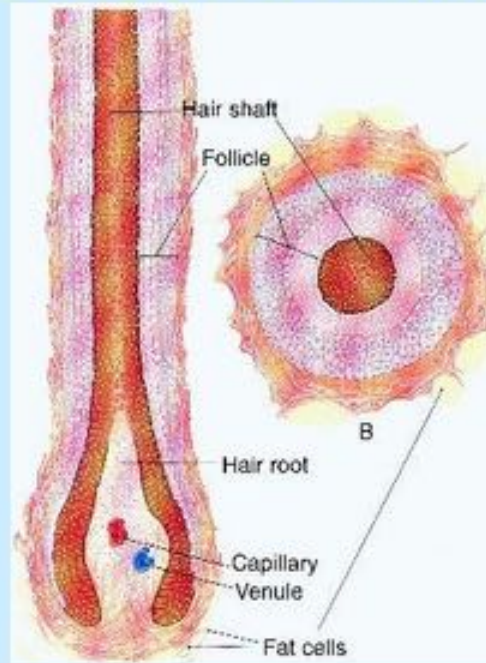


## **A BIG ONE IS SILICA DUST!**

It is created by cutting, grinding, drilling, mining or moving of:

- 1) Soil
- 2) Sand
- 3) Concrete
- 4) Masonry
- 5) Rock
- 6) Granite

## Cross-section of Human Hair



### **THE BIGGEST KEY POINT IS:**

SILICA PARTICLE IS SO SMALL, IT CAN'T BE SEEN BY THE NAKED EYE.  
(IT IS SMALLER THAN A HUMAN HAIR CROSS SECTION)

IT ONLY TAKES A VERY SMALL AMOUNT OF AIRBORNE SILICA DUST TO CREATE A HEALTH HAZARD





**ONE SOLUTION IS :  
A CENTRAL DUST COLLECTION SYSTEM**

Comprised of a larger, substantial dust collection equipment, these systems are an obvious solution for capturing and removing particulates from the plant environment or larger processes. The primary disadvantage is that these systems remove the material from your process. They are not cost-effective for capturing materials at the point of use!

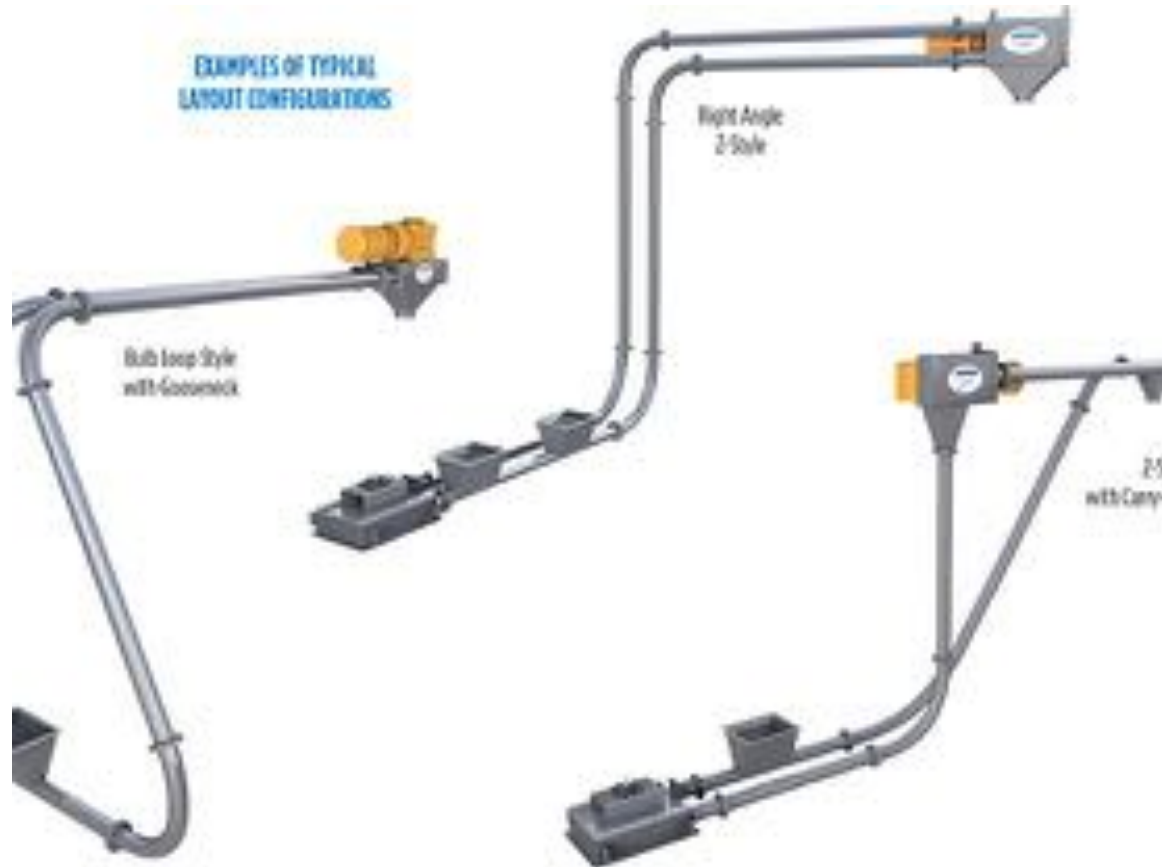


# Second solution is sealed Conveyors

Tubular Drag, Flex Screw and En-Masse conveyors offer a sealed line. They are effective for confining material to the process and eliminating dust.



EXAMPLES OF TYPICAL  
LAYOUT CONFIGURATIONS



# SEALED CONVEYORS

TUBULAR DRAG CONVEYORS KEEPING EVERYTHING ENCLOSED



## **THIS IS A MINING OPERATION IN MOZAMBIQUE**

HERE THE TUBULAR DRAG CONVEYOR WAS USED TO KEEP THE MINING OPERATION ENCLOSED, DUE TO HIGH LEVELS OF CARCINOGENS.



## **THIRD SOLUTION IS POINT OF USE**

THIS INTEGRAL DUST COLLECTOR IMMEDIATELY CAPTURES THE AIRBORNE PARTICULATES ON A CARTRIDGE FILTER



## **POINT OF USE**

DUST CONTROL PLUS NO LOSS OF MATERIAL



KEEPING IT CLEAN



## **GLOVE BOX DESIGN DUST COLLECTOR**

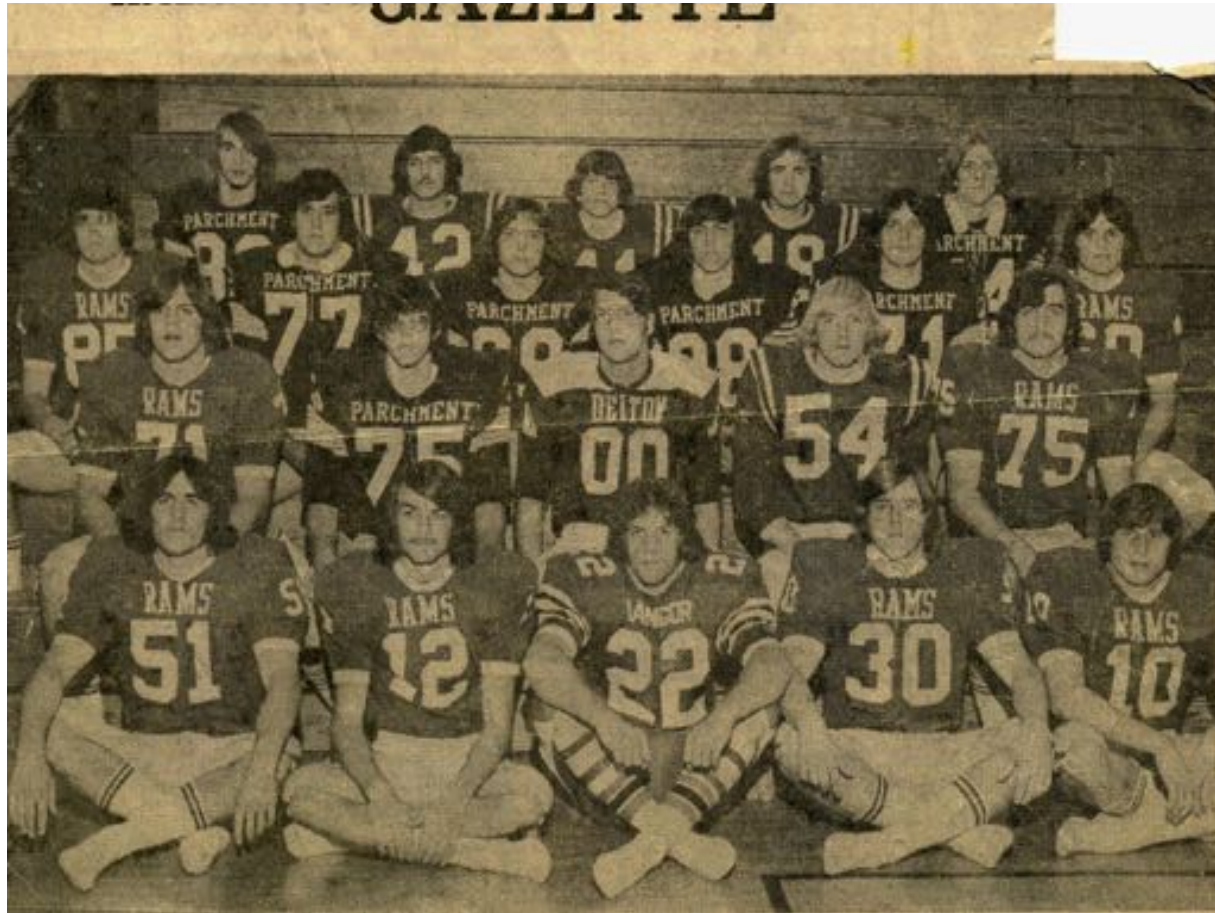
GREATER DUST CONTROL- SELF-CONTAINED SYSTEM IMPROVES SAFETY AND HOUSEKEEPING



## **CONCLUSION:**

BY GETTING A HANDLE ON THE CHALLENGE OF DUSTING AND IMPLEMENTING SOME OF THE INNOVATIVE SAFEGUARDS SEEN HERE TODAY. SO YOU CAN START TO MOVE INTO A SAFER AND HEALTHIER WORKING ENVIRONMENT





**Thank you for you time this morning**