

SPONSORSHIP OPPORTUNITIES

2026



GLOBAL BIOBANKING CONGRESS
Shenzhen CHINA
APRIL 21-23, 2026

CONTENTS

ABOUT ISBER	3
ABOUT THE ISBER GLOBAL BIOBANKING CONGRESS	4
WHO ATTENDS ISBER?	5
RECENT SPONSORS & EXHIBITORS	7
WHY BECOME AN ISBER SPONSOR?	8
EXHIBIT AT ISBER 2026	9
EXHIBIT AT ISBER + BBCMBA	10
CORPORATE OPPORTUNITIES	11
HOST OR SPONSOR A SYMPOSIUM, WORKSHOP OR FIRESIDE CHAT	12
SYMPOSIA, WORKSHOP AND FIRESIDE CHAT GUIDELINES	13
ANCILLARY MEETING AND EVENTS POLICY	13
CORPORATE OPPORTUNITIES DETAILED DESCRIPTIONS	14
ORGANIZATIONAL MEMBERSHIP	19
CONTINUOUS YEAR-ROUND MARKETING OPPORTUNITIES	20
ISBER 2026 APPLICATION FOR SPONSORSHIP AND EXHIBITORS	24

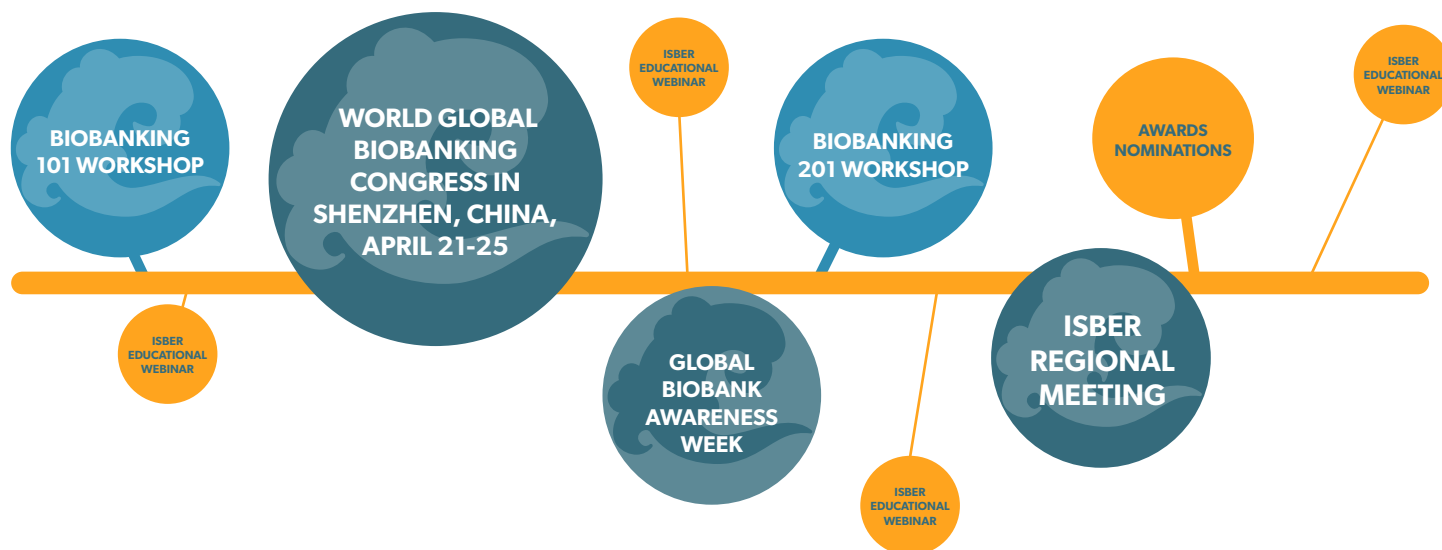
2026 SPONSOR & EXHIBIT OPPORTUNITIES

ABOUT ISBER

The International Society for Biological and Environmental Repositories (ISBER) is a global organization which creates opportunities for sharing ideas and innovations in biobanking and harmonizes approaches to evolving challenges for biological and environmental repositories. ISBER fosters collaboration, creates education and training opportunities, provides an international showcase for state-of-the-art policies, processes, and research findings, and innovative technologies, products, and services. Together, these activities promote best practices that cut across the broad range of repositories that ISBER serves.

ISBER is an active society with interaction and engagement among biobanking professionals around the globe.

ABOUT ISBER'S ACTIVITIES IN 2026



ABOUT THE ISBER GLOBAL BIOBANKING CONGRESS

In 2026, the ISBER Board of Directors invites attendees to the **World Biobanking Congress 2026**, taking place **April 21-25, 2026** in **Shenzhen, China**. This congress represents a unique collaboration between three leading biobanking associations: the **International Society for Biological and Environmental Repositories (ISBER)**, the **Biobank Branch, China Medicinal Biotech Association (BBCMBA)**, and **BGI**.

The 2026 Congress will bring together two major events: the **ISBER Global Biobanking Congress** (April 21-23), at the **BGI Center**, and the **BBCMBA China Integrated Biobank Congress** (April 23-25), held at the **Intercontinental Shenzhen Dameisha Resort**. The **joint collaborative day on April 23** will take place at the BGI Center, marking a pivotal occasion for international partnership, shared learning, and innovation.

As one of China's most dynamic and forward-thinking cities, Shenzhen provides a fitting backdrop for this global gathering. Home to BGI and numerous leading biotechnology companies, the city embodies rapid scientific advancement, a strong spirit of innovation, and an open environment for international cooperation, making it an ideal setting for advancing the future of biobanking.

With the 2026 Global Biobanking Congress taking place alongside **BBCMBA China Integrated Biobank Congress**, exhibitors can benefit from increased engagement time and audience reach, and expanded visibility across the global biobanking community. Delegates may register for either event, or both at a special combined rate, significantly increasing cross-attendance and traffic. This dual-meeting format creates an unparalleled platform for sponsors and exhibitors to showcase innovations, sponsor activations, and connect with a broader spectrum of biobankers, researchers, and industry leaders, amplifying impact and strengthening international relationships.



WHO ATTENDS ISBER?

500+
INDIVIDUALS
FROM
50
COUNTRIES
& 6
CONTINENTS

DELEGATE OCCUPATIONS



**Biorepository
Leader**



**Repository
Program/
Project Manager**



**Research
Scientist**



**Physician/
Pathologist**

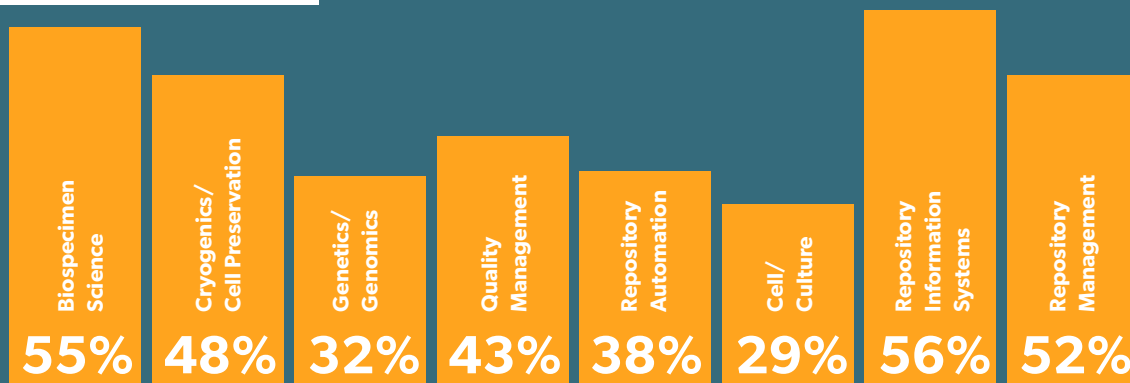


Technician



**Other
Specialist**

DELEGATE INTERESTS & EXPERTISE



DELEGATE SPECIMEN INTERESTS



Human



Animal



Environmental



Microbial



Pathology

MEMBERS SAVE MORE!

INVEST IN YOUR BIOBANKING TEAM'S FUTURE

With one membership, give your employees access to cutting-edge resources and expertise.

- Increase your organization's visibility with discounted exhibit space and newsletter ads
- Access Members-Only community forums and post jobs on the biobanking job board
- Engage with the biobanking community through ISBER's website, announcements, publications, and meetings.

RECENT SPONSORS & EXHIBITORS



EXHIBITORS FROM PAST MEETINGS:

- | | | | |
|---|--|---|--|
| » Abeyance Cryo Solutions | » Brooks Life Sciences | » Haier Biomedical | » OriginCell |
| » Agilent Technologies (China) Co. Ltd. Shanghai Branch | » Bruker (Beijing) Scientific Technology Co, Ltd. | » Hamilton Storage | » Alphavita Bio-Scientific (Dalian) Co.,Ltd. (Panasonic) |
| » Asian Network of Research Resource Centers (ANRRC) | » Chart MVE | » Hangzhou Houze Biotechnology Co., Ltd. | » Perkin Elmer |
| » ASKION GmbH | » China National Gene Bank | » Hong Kong AI Technology Ltd. (CryoBioSystems) | » PHC Corporation (Shanghai) |
| » Autoscribe Informatics | » CryoAL | » Hope (Shanghai) Biotech Co., Ltd. | » Qingdao Dashoo Techonology Co.Ltd |
| » Biobank Branch, China Medicinal Biotechnology Association | » Cryotherm GmbH & Co. KG | » International Society for Biological and Environmental Repositories | » Shanghai AvanTech Bioscience Co., Ltd. |
| » Beijing iBio-Gene Technology Co, Ltd. Hope (Shanghai) Biotech Co., Ltd. | » Daclan Biotech | » Labvantage Solutions Inc. | » ThermoFisher |
| » Biologix Group Ltd. | » Eppendorf China Ltd. | » LBD Life Sciences Limited | » Tsubakimoto Chain |
| » Biosigma SRL | » Fangye Technology Development Corporation | » Liconic Instruments | » Unchained Labs |
| » BIS Corporation | » Farrar Scientific Corp. | » LVL Technologies | » Worthington Industries |
| » Bluechiip Ltd. | » Fluidigm Corp China | » MGI | » Zhejiang Sorfa Life Science Research Co., Ltd. |
| | » Genepoint Biological Technology (Shanghai) Co., Ltd. | » Micronic | |
| | » Grenier Bio-One GmbH | | |

WHY BECOME AN ISBER SPONSOR?

Partnering with ISBER offers your organization an unparalleled opportunity to connect with key decision-makers and innovators within the biobanking and life sciences industries. Through precisely targeted sponsorship of our meetings, as well as year-round marketing opportunities, your organization can achieve:



Increased Visibility

Position your company front and center with a highly engaged, global audience of members and non-members, both in-person at events and through ongoing digital promotions.



Enhanced Collaboration

Build valuable professional relationships with thought leaders, potential partners, and clients, fostering collaborations that extend beyond the meetings.



Targeted Engagement

Reach your core demographic directly through customized sponsorship packages and marketing campaigns tailored to your goals.



Solidified Leadership

Become an ambassador of the ISBER *Best Practices* 5th Edition, the trusted resource created by global experts. Showcase your leadership by incorporating ISBER BP5 into your client dialogue.



Year-Round Impact

Stay top-of-mind through long-lasting marketing opportunities that ensure your organization's message resonates throughout the year.

Partnering with ISBER helps position your organization as a leader in the industry, driving innovation, growth, and best practices in biobanking. Plug-in to the global biobanking network to gain insights into growth opportunities.

EXHIBIT AT ISBER 2026



For the 2026 Congress in Shenzhen, the exhibit hall will be managed by our partner organization, BBCMBA. All exhibitor sales and on-site logistics will be coordinated through BBCMBA, with ISBER facilitating introductions and coordination to ensure a seamless and valuable exhibitor experience.

Exhibitors will benefit from three full days (April 21-23) of high-impact networking with global leaders in biobanking. The program includes two days of engagement with ISBER delegates (April 21-22), followed by a joint collaborative day with BBCMBA (April 23), offering access to a large and highly engaged regional audience.

Exhibit booths will be centrally located within the BGI venue, providing excellent visibility and steady attendee traffic throughout the Congress.

Pricing:

Premium Customized Booths (A01-A06): \$22,000 USD

Standard Booth (C01-C34): \$5,200 USD (ISBER members receive an 8% discount)

Multiple Booths (C01-C34): \$4,500 USD/booth

Non-profit Table-Top Booth: \$1,500 USD (location TBD upon confirmation)

Booth Specifications:

- ✓ Customized Booth (Type A): 5m × 4m, limit height 4 meters
- ✓ Standard Booth (Type C): 3m × 3m

Standard Booth Equipment:

- ✓ 1 x Information Desk
- ✓ 2 x Folding Chairs
- ✓ 2 x Long arm Spotlights
- ✓ 1 x Single-phase socket
- ✓ 1 x Wastebasket

Note: Refer to the diagram

Important Notes:

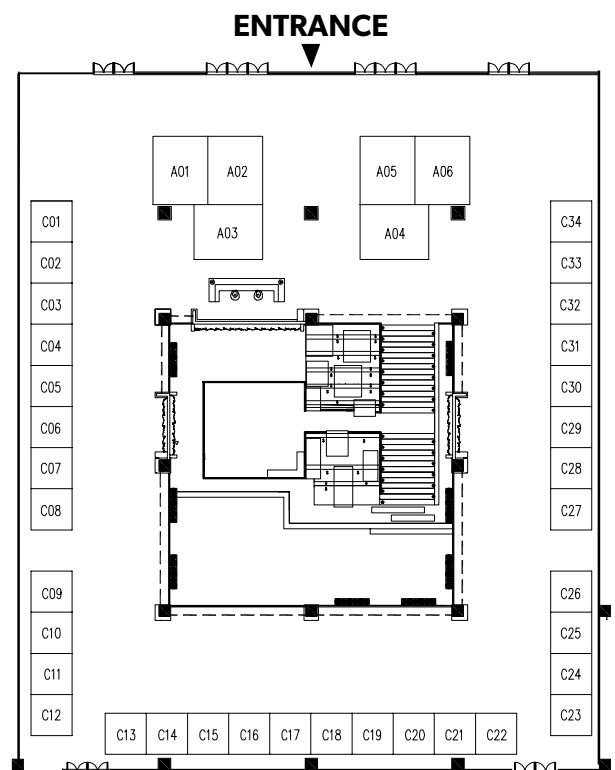
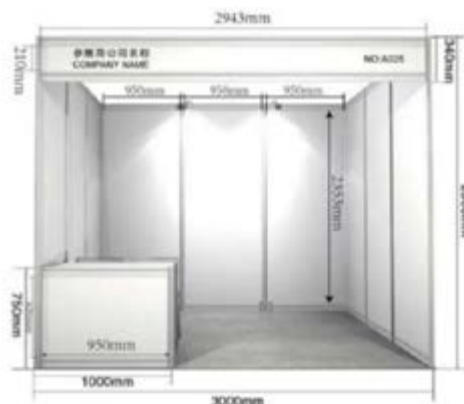
- ✓ Floor load-bearing capacity of the exhibition hall: 3.5 kN/m²
- ✓ Exhibition hall main door dimensions: 2.2m (height) × 1.6m (width)

Booth Allocation Policy:

The ISBER Head Office will confirm exhibit space upon receipt of a signed application form. Receipt of the application form by ISBER Head Office shall not guarantee the requested booth placement. Allocation will be confirmed by the BBCMBA partner within five (5) business days. Payment must be made directly to BBCMBA following the instructions they provide, and fulfillment will be managed by their team.

Special Requirements:

Companies requiring special equipment, such as compressed air, oversized equipment, or longer set-up times, are required to inform the BBCMBA team in advance.



**ISBER organizational members in good standing receive a \$425 USD discount on booth registrations. Please note that listed prices are prices exclusive of taxes.*

EXHIBIT AT ISBER + BBCMBA

Maximize your visibility and engagement by exhibiting at both the ISBER Congress (April 21–23) and the BBCMBA Congress (April 23–25). This unique, back-to-back opportunity allows your organization to connect with two highly influential biobanking audiences in a single week, expanding your reach while optimizing logistics and investment.

Over three days at BGI Center (April 21-23), you will engage with a truly global audience of biobank leaders, researchers, and decision-makers. The ISBER congress concludes with a joint collaborative day with BBCMBA, bringing together ISBER delegates and a large, engaged BBCMBA community. Your booth at ISBER will be centrally located within the BGI exhibition space, ensuring strong visibility and consistent traffic.

Immediately following ISBER, the BBCMBA Congress offers two additional days (April 24-25) of focused engagement, providing continuity in conversations, relationship-building, and brand presence.

EXCLUSIVE DUAL-EXHIBIT DISCOUNT

Exhibitors who choose to participate in both congresses are eligible for a 20% discount on exhibition fees.

Please note: Certain companies are excluded from this discount. See the exclusions in attached list provided by BBCMBA.

SIMPLIFIED LOGISTICS FOR DUAL EXHIBITORS

ISBER and BBCMBA are working closely to facilitate a smooth transition between venues for exhibitors participating in both events. Dismantling at ISBER begins on April 23, with coordinated timelines to support equipment transfer to the BBCMBA venue.

EXHIBIT DISMANTLING & EQUIPMENT TRANSFER

Exhibit dismantling may begin at the conclusion of the final networking break at 4:00 PM on April 23. Exhibitors may start packing and removing their materials at this time, including large-scale equipment. Exhibitors requiring exhibition services to handle or remove their equipment must advise the exhibition services team in advance. Official exhibition services will begin removing larger booth structures and equipment starting at 6:00 PM.

Exhibitors who are also participating in the BBCMBA Congress and displaying the same equipment must inform the Conference Management Company in advance if large equipment will need to be transferred from the BGI Center to the BBCMBA venue. Additional time may be required for dismantling, transport, and unloading.

Please note that the BBCMBA venue hotel has a single unloading entrance, and exhibitor move-in will take place on April 23. As a result, queues and delays are expected, particularly for large equipment, which may take 2–3 hours to pack and unload.

Depending on the number of exhibitors participating in both congresses, ISBER may allow the exhibit space to close after the lunch break on April 23 to facilitate earlier dismantling and transfer. This will be confirmed and communicated closer to the meeting dates.



CORPORATE OPPORTUNITIES

Exhibits

Exhibit Space – Premium Custom Booth Space	\$22,000
Exhibit Space – Single Booth	\$5,200
Exhibit Space – Multiple Booths	\$4,500
Exhibit Space – Non-Profit Single Booth	\$1,500

Advertisement

E-blast (3 months prior)	\$2,500
Mini-Commercial	\$2,500

Branding Opportunities

Printed Program Ads – Quarter Page	\$750
Printed Program Ads – Half Page	\$1,050
Printed Program Ads – One Full Page	\$1,500
Printed Program Ads – Full Page Inside Back Cover*	\$1,950
Printed Program Ads – Full Page Inside Front Cover*	\$2,250
Printed Program Ads – Full Page Outside Back Cover*	\$2,500
Seat Drops	\$1,000
Event T-Shirt Logo Recognition	\$800

Delegate Materials

Delegate Bag Insert	\$1,400
Delegate Bags*	\$4,900
Delegate Lanyards*	\$3,500
Delegate Notebooks*	\$3,000
Conference Swag	\$1,200
The Gift of Chen Pi Tea*	\$2,500

Educational

60 min Lunch Symposium*	\$7,000
60 min Corporate Breakfast Symposium	\$6,000
45 min Corporate Session	\$5,000
20 min Fireside Chat	\$4,000
Travel Grant	\$7,500
Awards – Outstanding Achievement in Biobanking	\$3,500
Awards – Leadership	\$3,500
Awards – Best Poster	\$2,500
Meeting Space	\$2,500

Function Sponsorship

ISBER Chinese Banquet – Event Sponsor*	\$8,000
ISBER Chinese Banquet – Corporate Table (10 tickets)	\$1,000
Welcome Reception*	\$6,000
Exhibitor Reception*	\$4,000
Speed Networking*	\$2,500
Networking Break*	\$2,200

**CLICK HERE TO FILL
OUT YOUR FORM**

***Exclusive sponsorship opportunity**

Please note that listed prices are prices exclusive of taxes.

HOST OR SPONSOR A SYMPOSIUM, WORKSHOP OR FIRESIDE CHAT

ISBER 2026 Global Congress has a number of opportunities for you to connect exclusively with delegates and engage in in-depth discussions. Host a corporate symposium or workshop to present new or existing products in an educational setting, gather feedback from delegates to assist in business development, and position your company as a leader in the market.

FEATURES:	Corporate Lunch Symposium 60 min \$7,000	Corporate Breakfast Symposium 60 min \$6,000 2 Concurrent Sessions	Corporate Session 45 min \$5,000 2 Concurrent Sessions	Fireside Chat 20 min \$4,000 1 Opportunity per Day (Max 2)
Refreshments included	✓ Full Lunch	✓ Light Breakfast	×	×
Exclusivity	Exclusive	Non-Exclusive	Non-Exclusive	Non-Exclusive
Expected attendance	200	100	100	60
Content programmed by sponsor	✓	✓	✓	✓
Event listing in final program and conference website	✓	✓	✓	✓
Company logo and description in final program and conference website	✓	✓	✓	✓
Pre-conference delegate list* (provided by April 1, 2026, electronic format only)	✓	✓	✓	×
Post-conference delegate list* (provided by May 20, 2026, electronic format only)	✓	✓	×	×
One (1) conference branded directional sign	✓	✓	✓	×

Descriptions and inclusions of corporate symposia, workshops, and fireside chats can be found on page 15.

* The delegate list provided will include only registered delegates who have consented to be contacted by ISBER sponsors. The list will contain the following information: full name, email address, job title, organization, city, province/state, and country.

Please note that listed prices are prices exclusive of taxes.

SYMPOSIA, WORKSHOP AND FIRESIDE CHAT GUIDELINES

- Acceptance of a sponsored symposium or workshop topic does not imply in any way ISBER endorsement of the program and materials.
- It is the responsibility of the host company to provide moderators, chairs for introductions, or speakers for any sponsored symposium or workshop.
- Sponsored symposium or workshop planning efforts including set-up, food and beverage, audiovisual and other arrangements, will be made through the ISBER Meeting Manager, unless other arrangements are agreed upon to allow the sponsors to deal directly with the BBCMBA partner. In the case of the latter, the ISBER Meeting Manager must be kept informed of all communication between sponsors and BBCMBA staff. If meeting staff is required on-site, the host company will be billed at a rate not to exceed \$75/hour/person.
- ISBER does not guarantee attendance. The recommended attendance numbers are non-negotiable (as based on past attendance patterns and attendance estimates from the previous years).
- ISBER will include the title and a brief description of the Symposium/Workshop in the Final Program.
- ISBER will not provide promotion or registration services for any Symposium/Workshop, other than publication of the title and a brief description of the symposia/workshop in the Final Program.
- ISBER will assist with on-site traffic flow and logistics for Symposia/Workshop.
- ISBER will provide a list of registered conference delegates (including Name, Institution and State) to Sponsor contact person prior to and/or after the Conference as per the session's inclusion outlined in the previous page of the prospectus.
- Host companies or their designates will not use "ISBER", "ISBER Global Congress", or ISBER's respective logos on any announcement, sign, publication, audio-visual product or other promotional materials without permission of ISBER.
- No audio or video taping without consent of the ISBER may be used; all approved audio and/or videotaping must be disclosed in the program to the audience.
- Host companies will refrain from posting promotional signs in public spaces of the venue without permission of ISBER.
- Host companies will keep any food and beverage service as a secondary element in organizing and publicizing the Symposium/Workshop.
- Fees should be remitted as soon as possible; cheques should be made payable to the International Society for Biological and Environmental Repositories.

ANCILLARY MEETING AND EVENTS POLICY

We encourage our corporate partners and supporters to create opportunities to interact with our delegates throughout the Global Congress. However, please note that all ancillary meetings and events must take place outside of the ISBER Global Congress program. Ancillary meetings and events may not conflict with any session within the ISBER Global Congress program. We request that all ancillary meetings or events held during the ISBER Global Congress be communicated to ISBER.

When organizing an ancillary meeting or event please contact the ISBER Head Office at sponsorship@isber.org and include the following information: (1) your contact information, (2) the date and time of the meeting or event, and (3) a brief description of the purpose and objectives of the ancillary meeting or event and (4) whether your company needs to reserve a room at the conference venue.

Please note: ISBER contracts much of the meeting space at the conference venue. We can typically re-sell it to you at a lower rate than would be offered by the venue. If you are interested in contracting space at the conference venue, please feel free to reach out to the ISBER office at sponsorship@isber.org.

CORPORATE OPPORTUNITIES

Descriptions & Inclusions (All Prices USD)

Opportunity	Price	Description
ADVERTISING		
Mini-Commercials	\$2,500	<p>Capture the undivided attention of attendees with a 10-30 second mini-commercial played during meeting breaks. Mini-commercials are an impactful opportunity to showcase your products, innovations, or mission directly to an attentive audience. Sponsor will provide the video file.</p> <p>Sponsorship is inclusive of:</p> <ul style="list-style-type: none"> • Mini-commercial distribution • Logistics management
E-Blasts leading up to the Global Biobanking Congress(1 per month exclusivity, January to March)	\$2,500	<p>E-blasts are sent to all individuals registered for the ISBER Global Biobanking Congress on the chosen send date. Sponsor will determine the content of the e-blast.</p> <p>Sponsorship is inclusive of:</p> <ul style="list-style-type: none"> • E-blast distribution • Logistics management
BRAND OPPORTUNITIES		
Program Advertisement		<p>With no event app onsite, the printed and PDF programs will be the essential guide for all delegates, used throughout the congress for schedules, sessions, and navigation. Place your ad where it's guaranteed to be seen. Sponsor to provide the visual by March 18, 2026.</p> <p>Available formats:</p> <ul style="list-style-type: none"> • Quarter page (\$750) • Half page (\$1,050) • One page (\$1,500) • Full page inside back cover (\$1,950) • Full page inside front cover (\$2,250) • Full page outside back cover (\$2,500)
Seat Drops	\$1,000	<p>A high-visibility opportunity to place your promotional item directly on attendee seats before a selected session. The sponsor provides the item, and ISBER Head Office will manage its distribution.</p>
Event T-Shirt Logo Recognition	\$800	<p>Showcase your brand on the iconic ISBER event t-shirt, featuring the beloved dancing ISBER letters customized with the destination emblems. Your company's logo will be prominently included, offering high visibility to all attendees.</p>

Opportunity	Price	Description
DELEGATE MATERIALS		
Branded Delegate Bags Exclusive	\$4,900	<p>Custom ISBER Global Biobanking Congress delegates bags provided to each registered delegate as they retrieve their meeting badge. Sponsor to provide logo.</p> <p>Sponsorship is inclusive of:</p> <ul style="list-style-type: none"> • Branded delegate bag – ISBER + supporting organization logo • Delegate bag distribution • Digital and print recognition • Logistics management
Branded Delegate Lanyards Exclusive	\$3,500	<p>Have your logo on the delegate badge lanyards that all delegates will receive and wear for the duration of the meeting. Sponsor to provide logo.</p> <p>Sponsorship is inclusive of:</p> <ul style="list-style-type: none"> • Branded lanyards – ISBER + supporting organization logo • Lanyard distribution • Digital and print recognition • Logistics management
Branded Delegate Notebook Exclusive	\$3,000	<p>Custom ISBER Global Biobanking Congress delegates notebook provided to each registered delegate upon checking in with the meeting desk. Sponsor to provide logo.</p> <p>Sponsorship is inclusive of:</p> <ul style="list-style-type: none"> • Branded notebook – ISBER + supporting organization logo • Notebook sourcing and distribution • Digital and print recognition • Logistics management
Delegate Bag Insert	\$1,400	<p>Delegate bag inserts are provided to each registered delegate as an add-on to the meeting bag they receive upon checking in at the meeting. Sponsor to provide the insert. The default insert is a one to two page flyer or pen. For any other insert type (a multi-page booklet, pamphlet, or non-standard item), please advise the Head Office at sponsorship@isber.org.</p> <p>Sponsorship is inclusive of:</p> <ul style="list-style-type: none"> • Delegate bag insert distribution • Digital and print recognition • Logistics management
Branded Conference Swag	\$1,200	<p>From mugs and water bottles to pens, magnets, or even local snacks or confectionery, this is a unique opportunity to fill delegates' bags with memorable keepsakes they'll want to take home as souvenirs from the conference.</p> <p>Sponsor to provide production and shipping of items directly to the conference venue. Items are subject to approval in advance by the ISBER Head Office.</p> <p>Sponsorship is inclusive of:</p> <ul style="list-style-type: none"> • Digital and print recognition • Distribution management during the conference
Local Gift, Chen Pi Tea Exclusive	\$2,500	<p>Delight delegates with a memorable taste of the host country while putting your organization in their hands. Your logo and message will accompany each package of Chen Pi Tea, a traditional, cherished tea specialty, creating a tangible, lasting connection with every attendee.</p> <p>Sponsorship is inclusive of:</p> <ul style="list-style-type: none"> • Digital and print recognition • Tea sourcing and distribution • Digital and print recognition

Opportunity	Price	Description
EDUCATIONAL		
60-Minute Corporate Lunch Symposium Exclusive	\$7,000	<p>Prime time slot, uninterrupted, with no competing events, this 60 min corporate symposium is an exclusive opportunity to present information directly to your target audience. Sponsor will determine the format, content, and speakers for the session.</p> <p>Sponsorship is inclusive of:</p> <ul style="list-style-type: none"> • Room set up with basic audio-visual and stage headtable • Dedicated social media post, advertising the session • Digital and print recognition • Logistics management with the speaker • Lunch order for up to 200 people <p>Costs do not include:</p> <ul style="list-style-type: none"> • Speaker honoraria, recording requests, special decor, non-standard audio visual equipment, additional special requests.
60-Minute Corporate Breakfast Session	\$6,000	<p>Kick off the day with a 60-Minute corporate session, an opportunity to present information directly to your target audience first thing in the morning. Sponsor will determine the content and speakers for the session.</p> <p>Sponsorship is inclusive of:</p> <ul style="list-style-type: none"> • Hot beverages and breakfast items • Room set up with basic audio-visual and stage headtable • Dedicated social media post on advertising corporate workshops • Digital and print recognition • Logistics management with the speaker
45-Minute Corporate Sessions	\$5,000	<p>This 45-Minute corporate session is an opportunity to present information directly to your target audience during a prime time of the day. Capture delegates' attention with expert content during lunch. Sponsor will determine the content and speakers for the session.</p> <p>Sponsorship is inclusive of:</p> <ul style="list-style-type: none"> • Room set up with basic audio-visual and stage headtable • Dedicated social media post on advertising corporate sessions • Digital and print recognition • Logistics management with the speaker
20-Minute Fireside Chat at Break (*One per day)	\$4,000	<p>Engage with attendees through a 20-minute Fireside Chat during a networking break. This relaxed, interview-style session offers an intimate way to share insights, highlight industry trends, or showcase innovative projects. The sponsor determines the content and speakers.</p> <p>Sponsorship is inclusive of:</p> <ul style="list-style-type: none"> • Set up with microphones and sitting arrangement • Dedicated social media post, advertising the discussion • Digital and print recognition • Logistics management with the speaker if needed
Travel Grant	\$7,500	<p>Support the next generation of biobanking leaders by funding travel grants for emerging professionals to attend the ISBER Global Biobanking Congress. This sponsorship broadens industry access, enriches event diversity, and showcases your commitment to fostering talent and growth within the global biobanking community.</p> <p>Sponsorship is inclusive of:</p> <ul style="list-style-type: none"> • Dedicated social media post, announcing the travel grantee and the sponsor who made it possible • Digital and print recognition • Recognition on the holding slides playing in all rooms at all breaks • Logistics management with the travel grant recipient

Opportunity	Price	Description
Outstanding Achievement in Biobanking Award	\$3,500	<p>Highlight exceptional contributions to the field by sponsoring the ISBER Outstanding Achievement in Biobanking Award, presented during the Annual General Meeting. This award recognizes individuals who have made significant, influential, and widely impactful contributions to biobanking, whether through a single major achievement or a lifetime of work. Contributions may include advancing biobanking science, expanding knowledge, demonstrating world-class expertise, making notable discoveries, or elevating the field's visibility. Recipients do not need to be ISBER members.</p> <p>ISBER will manage the sourcing, shipping, and distribution of the award.</p>
Leadership Award	\$3,500	<p>Highlight an ISBER member who has demonstrated exceptional leadership in advancing the mission and goals of the society and/or made significant, long-standing contributions. This award recognizes individuals who have played a critical role in shaping and executing ISBER's vision. Examples include leading key initiatives, driving meaningful improvements within the association, and consistently demonstrating excellence, integrity, and performance beyond expectations. The recipient must be an ISBER member.</p> <p>ISBER will manage the sourcing, shipping, and distribution of the award.</p>
Best Poster Award	\$2,500	<p>Highlight your support for research excellence by sponsoring the Best Poster Award. This exclusive opportunity places your organization at the forefront of innovation, recognizing top contributions to biobanking research. As the award sponsor, your organization will be associated with advancing impactful discoveries and fostering academic achievement, making a lasting impression on attendees and award recipients alike.</p> <p>Sponsorship is inclusive of:</p> <ul style="list-style-type: none"> • Your logo on the Poster Award signage • Digital and print recognition • Logistics management
Meeting Space at the Venue	\$2,500	<p>These 1 hour-meeting spaces present an opportunity for companies to hold meetings and continue to conduct business throughout the week. ISBER 2026 formally requests that all ancillary sponsor and affiliate organizations are booked directly through the ISBER Head Office. For more information please contact sponsorship@isber.org.</p> <p>A selection of meeting rooms are available to rent for:</p> <ul style="list-style-type: none"> • Affiliate Meetings • Client Meetings • Advisory Board Meetings • Receptions • Private Sessions
FUNCTION SPONSORSHIP		
ISBER Chinese Banquet – Event Sponsor Exclusive	\$8,000	<p>Position your company at the heart of an unforgettable Chinese banquet. As the exclusive sponsor of this signature evening, you'll gain exceptional visibility while offering delegates a memorable cultural experience with their colleagues.</p> <p>Sponsorship is inclusive of:</p> <ul style="list-style-type: none"> • Welcome note at the dinner opening. • Organization logo and/or name on menus and signage. • Possibility to offer a branded gift to all ISBER evening attendees. (To be provided by the sponsor)
ISBER Chinese Banquet – Corporate Table	\$1,000	<p>Secure a reserved table in a prime location at the ISBER Chinese Banquet, providing your company with 10 attendee tickets.</p>

CORPORATE OPPORTUNITIES

Opportunity	Price	Description
Welcome Reception Exclusive	\$6,000	<p>The Welcome Reception is a fantastic networking occasion where all attendees come together in an informal setting to meet and greet new and old partners. Benefit from this platform to bring your message across to the market.</p> <p>Sponsorship is inclusive of:</p> <ul style="list-style-type: none"> • Welcome note at the reception opening. • Organization logo and /or name on reception signage. • Digital and print recognition.
Exhibitor Reception Exclusive	\$4,000	<p>Be part of one of only two exclusive receptions at the meeting. This networking-focused event brings together exhibitors and attendees in a relaxed setting, offering prime visibility and the opportunity to connect with key leaders in the biobanking community.</p> <p>Sponsorship is inclusive of:</p> <ul style="list-style-type: none"> • Reception-style food and drinks • Organization logo and/or name on reception signage • Digital and print recognition
Speed Networking Exclusive	\$2,500	<p>It's your time to shine! This is an opportunity to be innovative and take up the mic to emcee this fun event that gathers new and old attendees of the ISBER Global Biobanking Congress. Sponsors are encouraged to develop and propose upgrades to enhance the activity. ISBER Head Office is available to provide logistical support to help bring your creative ideas to life.</p> <p>Sponsorship is inclusive of:</p> <ul style="list-style-type: none"> • Welcome note • Breakfast & hot beverages for up to 100 people • Mic and basic lighting • Organization logo and /or name on reception signage.
Networking Break Exclusive	\$2,200	<p>Make one of the coffee breaks your own, place your brand name on all attendees' minds and ensure your company is the topic of their conversations.</p> <ul style="list-style-type: none"> • Signage with your company logo and name on all coffee stations • Only 4 networking breaks are available

ORGANIZATIONAL MEMBERSHIP

We invite you to become an ISBER Organizational Member and enjoy exclusive benefits at the Global Biobanking Congress and throughout the year!

ORGANIZATIONAL MEMBERSHIP BENEFITS:

BENEFIT	X-LARGE \$4,550	LARGE \$1,800	MEDIUM \$925	SMALL \$475
Number of Subaccounts/Individual Memberships	25	8	4	2
Number of Electronic Journal Subscriptions*	5	4	2	1
Discount on Exhibit Space at ISBER Global Congress and Regional Meetings	\$425	\$425	\$425	\$425
Discount on ISBER Newsletter Advertisements	\$100	\$100	\$100	\$100

ADDITIONAL BENEFITS:

- Highlight your company, products, and services to the biobanking community
- Your subaccounts are entitled to full Individual Membership benefits (see below)
- Access to ISBER Members-Only Hub (Forum) to learn and share cutting-edge approaches to biobanking with other members
- Access to the online jobs board at: www.biobankingjobs.com
- Post jobs or find your next employment opportunity
- ISBER provides a perfect forum for organizations and companies to reach their target/niche audience. Through links and announcements on the ISBER website, ads, peer-reviewed articles in *Biopreservation and Biobanking*, and exhibits at the annual meetings, members can interact directly with and showcase their products to the repository community.

Head Office: 1618 Station Street Vancouver, BC, V6A1B6 Canada
T: 1-604-484-5693 E: info@isber.org W: www.isber.org

CONTINUOUS YEAR-ROUND MARKETING OPPORTUNITIES

STAY VISIBLE BEYOND MEETINGS

Perfect for sponsors looking to make a lasting impact beyond in-person events, our Continuous Reach marketing packages offer unmatched visibility and engagement with a global audience. With access to over 1,200 global ISBER members, 5,000 unique website visitors per month, and a 7,400-strong contact list, your brand will benefit from targeted outreach and continuous promotion. Ideal for digital marketing campaigns, email outreach, and social media promotion, ensure your brand remains a key player in the biobanking community. Additionally, with over 1,700 downloads of the ISBER *Best Practices* 5th Edition, aligning your brand with our best practices further reinforces your position as a trusted leader in the industry.

BUNDLE 1

- 2 x Member E-blasts
- 1 x Ad placement in weekly newsletter
- 1 x Quarter Page Ad in Printed Program

\$7,750 USD

BUNDLE 2

- » 1 x Corporate webinar
- » 1 x Social media post leading up to webinar
- » 1 x Member E-blast

\$10,400 USD

BEST VALUE

BUNDLE 3

- 1 x Corporate webinar
- 1 x Social media post leading up to webinar
- 1 x Member E-blast
- 1 x Ad placement in weekly newsletter

\$13,500 USD

INTERACT

CORPORATE WEBINAR

\$6,500

Host a webinar for the biobanking community! This includes the opportunity for you to develop the content of the session and choose the speaker and the ISBER Head Office takes care of logistics and promotions.

- » Free to attend for both ISBER members and non-members
- » Promotion of your webinar via our weekly e-blasts and the ISBER website
- » Promotion of your webinar in 1 social media post and 1 ISBER forum post
- » Only 1 corporate webinar will be held per month, on a first-come-first-served basis
- » Full webinar platform management including registration communication, web-access information, and running the webinar online
- » Recognition on the opening slide of the webinar
- » Receive the full registration list following the session (First name, last name, institution, country, and email, if applicable)
- » Receive a copy of the recorded event file.
- » *Optional:* Organized pre-webinar run-through with speaker, if needed
- » *Optional:* Post-conference evaluation sent to registrants



SOCIAL MEDIA POST

\$2,200

Connect with the ISBER social media audience with your campaign.

ISBER will share your social media post (you provide graphic and copy) on each of our social media platforms:

- » LinkedIn: ~5,2K followers
- » Twitter: ~1,6K followers
- » Facebook: ~1K followers

ISBER Head Office reserves the right to refuse any content deemed inappropriate



BROADCAST

AD PLACEMENT IN WEEKLY ISBER NEWSLETTER

\$3,250

Place your ad in the ISBER Weekly Newsletter and connect with our membership's inbox.

- » The ISBER Newsletter is sent to over 7,000 biobanking professionals, and your ad will link to your company's website.
- » Engage in your choice of two banner locations on the newsletter, or create a piece for the ISBER Sponsor Spotlight

PLACEMENT	LENGTH OF AD PLACEMENT	PRICE
Above Email Header	8 weeks	\$3,250
Below Email Header	8 weeks	\$3,250
ISBER Sponsor Spotlight	4 weeks	\$3,250



ADVERTISE IN THE ISBER NEWS BLOG

\$1,000-2,000

- » Reach our members by placing your banner or article in the ISBER News: <https://www.isber.org/news/>
- » Your article will remain in the ISBER news blog indefinitely.

ADVERTISEMENT TYPE	CONTENT	PRICE
Footer	Banner image, active for 3 months	\$1,000
Small Article	< 500 words	\$1,500
Large Article	500 – 900 words	\$2,000

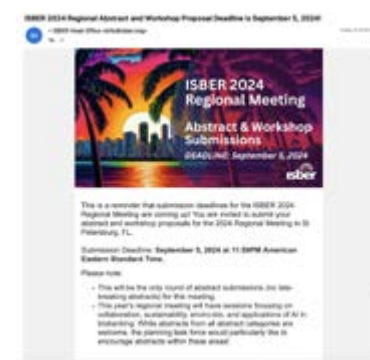


DEDICATED MEMBER E-BLAST

\$2,200

Engage with the ISBER membership by sending a targeted e-blast to the biobanking community.

- » Your e-blast will be distributed to all ISBER members who have consented to receive third party emails at the scheduled time of the e-blast. The ISBER member contact list is a highly curated database of over 1,000 biobanking professionals. A maximum of two sponsored e-blasts will be available per month, sold on a first-come-first-served basis.



EXHIBIT

ISBER VIRTUAL EXHIBIT HALL

\$3,500

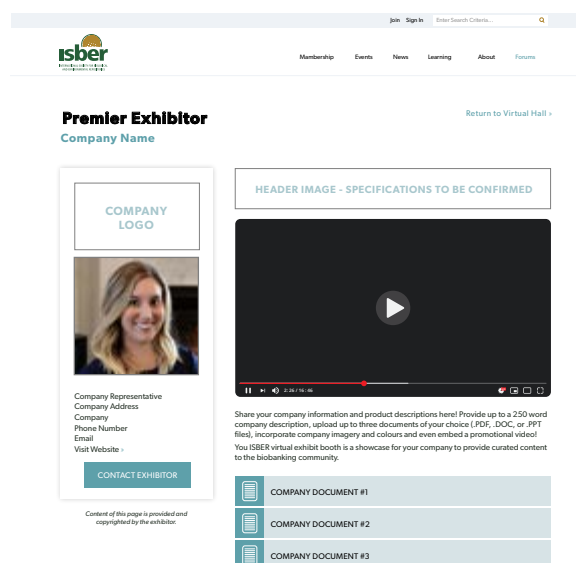
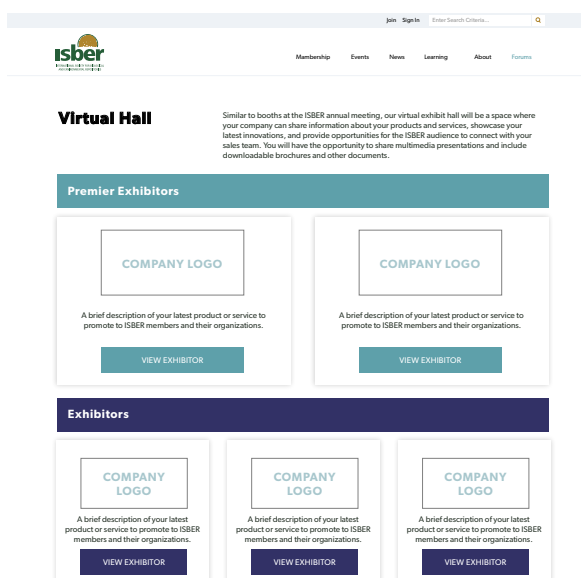
Standard Booth Listing

\$5,000

Premium Booth Listing

***ISBER ORGANIZATION MEMBERS ARE ELIGIBLE FOR A \$300 DISCOUNT ON VIRTUAL BOOTH SPACE.**

- » Similar to booths at the ISBER Global Biobanking Congress, our virtual exhibit hall will be a space where your company can share information about your products and services, showcase your latest innovations, and provide opportunities for the ISBER audience to connect with your sales team. You will have the opportunity to share multimedia presentations and include downloadable brochures and other documents.
- » We have prepared a mock-up as a reference for what the virtual exhibit hall will look like when launched. To view the mock-up, please visit: <https://www.isber.org/VirtualTownHallMock-Up>
- » Your booth will be active for one calendar year
- » Upon expiry, you will have the option to renew your virtual booth space for another year
- » Monthly promotion of the virtual exhibit hall will be included within the ISBER Newsletter, distributed to over 1,500 contacts
- » Page visit analytics will be provided twice annually



PUT IT TOGETHER

COMBINE OUR VIRTUAL EXHIBIT WITH A WEBINAR, A SOCIAL POST, OR A NEWS ARTICLE TO INCREASE YOUR IMPACT AS A THOUGHT LEADER IN BIOBANKING.

CLICK HERE TO FILL OUT YOUR FORM

ISBER 2026 APPLICATION FOR SPONSORSHIP AND EXHIBITORS

Create your conference package!

STEP 1: APPLICANT INFORMATION:

Company Name: _____

Address: _____

City: _____ State: _____

Country: _____ Zip Code: _____

Telephone: _____ Fax: _____

Corporate Applicant Contact: _____

Email: _____

Booth Preference: 1st _____ 2nd _____ 3rd _____

I would prefer to not be placed close to the following companies: _____

Special Booth requirements (e.g. compressed air equipment weight that exceeds 350kg/m²), please specify:

With my signature below, I affirm that I have read and understand the ISBER [Meeting Guidelines](#).

Signature of Applicant: _____

STEP 2: SELECT YOUR CORPORATE OPPORTUNITIES

EXHIBITS

All prices in USD

	Price (USD)	Qty.	Total
Exhibit Space – Premium Custom	\$22,000		
Exhibit Space – Single Booth	\$5,200		
Exhibit Space – Multiple Booths	\$4,500		
Exhibit Space – Non-Profit Single Booth	\$1,500		
Exhibit at ISBER+BBCMBA:	Yes No		

MARKETING OPPORTUNITIES

All prices in USD

	Price (USD)	Total
Advertisement		
E-blast (3 months prior)	\$2,500	
Mini-Commercial	\$2,500	
Branding Opportunities:		
Printed Program Ads – Quarter Page	\$750	
Printed Program Ads – Half Page	\$1,050	
Printed Program Ads – One Full Page	\$1,500	
Printed Program Ads – Full Page Inside Back Cover*	\$1,950	
Printed Program Ads – Full Page Inside Front Cover*	\$2,250	
Printed Program Ads – Full Page Outside Back Cover*	\$2,500	
Seat Drops	\$1,000	
Event T-Shirt Logo Recognition	\$800	
Delegate Materials:		
Delegate Bag Insert	\$1,400	
Delegate Bags*	\$4,900	
Delegate Lanyards*	\$3,500	
Delegate Notebooks*	\$3,000	
Conference Swag	\$1,200	
The Gift of Chen Pi Tea*	\$2,500	
Function Sponsorship:		
Networking Break	\$2,200	
ISBER Chinese Banquet – Event Sponsor	\$8,000	
ISBER Chinese Banquet – Corporate Table (10 tickets)	\$1,000	
Welcome Reception	\$6,000	
Exhibitor Reception	\$4,000	
Speed Networking	\$2,500	
Education:		
60 min Lunch Symposium*	\$7,000	
60 min Corporate Breakfast Symposium	\$6,000	
45 min Corporate Session	\$5,000	
20 min Fireside Chat	\$4,000	
Meeting Space	\$2,500	
Travel Grant	\$7,500	
Awards – Outstanding Achievement in Biobanking	\$3,500	
Awards – Leadership	\$3,500	
Awards – Best Poster	\$2,500	

YEAR ROUND OPPORTUNITIES

All prices in USD

	Price (USD)	Total
Bundles:		
Bundle 1	\$7,750	
Bundle 2	\$10,400	
Bundle 2	\$13,500	
Interact:		
Corporate Webinar	\$6,500	
Social Media Post	\$2,200	
Broadcast:		
Ad Placement in ISBER Newsletter	\$3,250	
Advertise in ISBER News Blog - Footer	\$1,000	
Advertise in ISBER News Blog - Small Article	\$1,500	
Advertise in ISBER News Blog - Large Article	\$2,000	
Dedicated Member E-blast	\$2,200	
Exhibit:		
Virtual Exhibit Hall - Standard Booth	\$3,500	
Virtual Exhibit Hall - Premium Booth	\$5,000	

Organizational Membership

Yes, I would like to join as an ISBER 2026 Organizational Member. All prices in USD. Please apply the sales tax rate for your area to the total.

	Price (USD)	Price w/ Tax (USD)	Total
X-Large	\$4,550		
Large	\$1,800		
Medium	\$925		
Small	\$475		

TOTALS

Sub-total

(not including organizational membership):

Organizational Membership Total:

(if applicable)

Organizational Member Discount (\$425):

Total:

Please note that listed prices are prices exclusive of taxes.

STEP 3: PAYMENT INFORMATION:

Exhibitor Sales, Payments, and Tax Information

Upon receipt of the completed application, ISBER Head Office will forward an electronic invoice and payment information.

For the 2026 Congress in Shenzhen, exhibit booths and tabletop packages are purchased directly through BBCMBA, ISBER's local partner. Upon submission of the application form, ISBER Head Office will connect exhibitors with the BBCMBA exhibitor fulfillment contact to manage payment, booth allocation, and logistics.

All other sponsorship opportunities are processed through ISBER Head Office.

Payment Terms for ISBER sponsorships (excluding exhibit sales):

- » Payments must be made in U.S. dollars (USD)
- » Bank drafts must be drawn on a U.S. bank
- » Checks payable to: International Society for Biological and Environmental Repositories

Tax Notice:

All prices are exclusive of applicable taxes. ISBER has no establishment in the People's Republic of China (PRC); therefore, any required taxes (including VAT and income tax) are the responsibility of the payer and must be remitted in accordance with PRC law.

(ISBER 在中国未设机构场所,所列价格不含税费,相关税费由付款方依法另行承担。)

Cancellation Policy

Refund requests will require written notice of cancellation. Cancellations received in writing on or prior to January 30, 2026 will receive a 50% refund. Cancellations received after January 30, 2026 will NOT receive a refund. Paid space unclaimed or abandoned by 5:00pm on Tuesday April 21, 2026 will be repossessed without indemnity and reassigned by ISBER.

STEP 4: SUBMIT YOUR APPLICATION

After completion of application pages 1-3 please sign the bottom of this page.

How to submit your application:

Please email your application form to sponsorship@isber.org. ISBER Head Office will be in touch shortly with an invoice and payment instructions.

ISBER Head Office

1618 Station Street, Vancouver, BC, Canada V6A 1B6
T 604.484.5693 | F 604.874.4378

The Applicant acknowledges that the Corporate Opportunities document forms part of the contract arising upon the acceptance of this Application by Conference Management. The Applicant acknowledges having read and understood the Conditions and Regulations to the Contract for Exhibit Space as outlined in said document. The Applicant further acknowledges and agrees that no contract exists between the under signed Applicant and Conference Management unless and until Conference Management completes the acceptance portion of this Application.

Exhibitors & Sponsors

The Applicant hereby makes application to obtain from ISBER Global Congress ("Conference Management") a license to occupy and use exhibit space (the "Exhibit Space") in the venue (the "Exhibit Hall") during an Exhibition (the "Exhibition") to be held from April 21 to April 23 (inclusive), 2026 in conjunction with the ISBER Global Congress and Exhibits (the "Conference"), such Exhibit Space to be in a location assigned by Conference Management. The Applicant acknowledges and agrees that upon acceptance by Conference Management, by completing and executing the acceptance portion of this Application, this Application will become a contract for the licensing of the Exhibit Space between the Conference Management and the Applicant (thereafter referred to as the "Exhibitor"). The Applicant agrees to abide by all the rules and regulations governing the Exhibition as set forth and included in the Corporate Opportunities Package and the Exhibitor Services Manual, a copy of which will be provided to each exhibitor. By completing this application, the Applicant allows Conference Management to share the provided contact information to the exhibitor services provider of this meeting for the purpose of coordinating exhibition logistics.

APPLICANT SIGNATURE AGREEING TO THE TERMS AND CONDITION OF THIS EXHIBIT AND SPONSORSHIP APPLICATION AND AGREEMENT:

Signature of Applicant

Please print name:

Date