

# NEWS

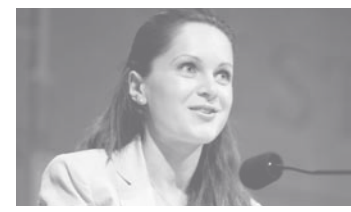
## Jewish Foundation for Education of Women

135 EAST 64TH STREET 212 288 3931 TEL FALL/WINTER  
NEW YORK, NY 10021 212 288 5798 FAX 2006/2007

### MESSAGE FROM THE PRESIDENT

This fall, as part of the ongoing evaluation of our programs, we are taking a close look at the scholarships we provide for women studying to become math and science teachers. These women, who are pursuing their master's in education degrees, must commit to teaching in the New York City public school system for at least two years. At one of our partner schools, Teachers College, the results have been impressive. Virtually all our recipients there have completed the two-year requirement or are currently satisfying it. In addition, an independent interviewer has been speaking with randomly selected former recipients, and it is gratifying to be able to report that four of the five women interviewed thus far have remained in the NYC school system—several years after their obligations to do so have expired. In pursuing this evaluation effort, we are most fortunate to have the involvement of Board member and alumna **Dr. Sharon Weinberg**. Dr. Weinberg is a professor at New York University and an expert in evaluation methodology.

I am pleased to report that our mentor program continues to thrive under the direction of **Ella Shteingart**, our newest staff member. We are continually impressed by Ella's precision matchmaking of recipients to alumnae. For example, one of our pre-med recipients, with a particular interest in emergency medicine, was matched with a professor of emergency medicine. Another student, interested in special education, was matched with a former district administrator for special education in New York City. We are most grateful to all the alumnae who volunteer in this program. The students benefit enormously from their meetings with the mentors, as well as from Ella's coaching on interview techniques, writing a resume and other necessary skills for job-seeking.



Above: Nurse practitioner and alum Gail Rossetot counseling students at the reception.

Below: Alum Anna Zhuravsky Suler, MD, addressing students at the reception.



Summer 2006 reception for current recipients and their families.

I am proud to report that, once again, JFEW alumnae have sent in a record amount of contributions that enabled us to provide six additional scholarships (*see page 3*). We are most grateful to all of you for your continuing support. The Foundation's Board of Directors also has been most generous in contributing funds that provided five additional scholarships for the 2006-07 school year to a diverse group with compelling needs. Among them is a primary caregiver for a father with Alzheimer's who has had extremely challenging medical problems, herself; and another is confined to a wheelchair and has found a vocation as a court stenographer.

Finally, I hope you will take a look at our newly designed Web site at [www.jfew.org](http://www.jfew.org). We have made it more informative and more user-friendly. Among its new features is one that affords a student the ability to log in to see whether or not we have received her grades and registration. We believe this will be more efficient for everyone. The Web site also features various current and past recipients and will be updated periodically.

*Marcy Russo*  
Marcy Russo



## MESSAGE FROM THE DIRECTOR

This year I am pleased to report that the Jewish Foundation for Education of Women is providing scholarships to more than 500 women in the New York City area as they pursue higher education. We are assisting significant numbers of women who have come here from all parts of the globe—from Bulgaria to Guyana to China to Uzbekistan—as well as that hardy breed of born-and-bred New Yorkers. What unites these women is their determination to succeed in higher education while struggling with its increasing costs.

The Foundation assists undergraduates still weighing the virtues of different majors, as well as graduate students on a straight and narrow path toward particular professions. We know that most will achieve in their desired fields—or in fields they never dreamed they would find themselves in. The Foundation proudly supports women studying in such widely divergent disciplines as actuarial science, anthropology and engineering. We note that there is a growing number of women training in speech pathology, nursing and special education.

Unfortunately, there is also a growing number of students who have been living completely on their own during high school. This year, in the case of just one of our partners, the OPTIONS program at the Goddard Riverside Community Center, four out of five nominees found themselves in that situation. The good news is that the Foundation was able to assist them, generally with larger-than-average grants.

Unfortunately, we are also seeing more cases of *young* women who are *primary* caregivers for chronically ill or disabled parents. They must juggle the competing demands of schoolwork and care giving. These women also have more financial need because their parents are not in a position to help and, in fact, must turn to their children for assistance. We are humbled by the remarkable efforts of these students to overcome such obstacles in their quest for education.

Several years ago we began hosting a late summer reception for recipients just before they went off to school. This year we were more ambitious, and immediately before the reception, we organized a special workshop for entering college freshman that focused on building skills for success at college. We also had several alumnae speak about their experiences in college and in the workplace, and still more alumnae on hand during the reception to chat with students one on one about their professions. This year's reception was a big success, and we look forward to hosting more in the future.

In closing, I would like to thank our enormously capable summer intern, [Arianna Sloat](#), who graduated from Reed College in June, for her work on this newsletter.



*Marge Goldwater*

Marge Goldwater

## JFEW ALUMS AT WORK: BREAKING MOLDS AND MAKING POLICY

Throughout JFEW's long history, financial need has always been a primary focus in determining scholarship recipients. The Foundation has never particularly sought out those with the most stellar records in high school, for example, though we have been privileged to help many such students over the years. In a sense, we have taken the road less traveled and chosen to assist students with more diverse backgrounds and, in some instances, with less assured outcomes. Therefore, it is especially gratifying to report on the remarkable achievements of the women cited below, most of whom received aid in the mid-1980s. Several have sent us notes that begin with the sentiment, "You took a chance on me—and it made all the difference."

As in previous years, the alumnae reported on here are women of considerable achievement in a wide variety of fields—from the arts to medicine to public policy to social services to academia. And interestingly, as our aid to students continues over the decades, we are seeing more instances of several JFEW alumnae in positions at the same institution, as is the case with the Harvard Medical School, NYU's Steinhardt School of Education, and as noted in a previous newsletter, Dartmouth College.

At Harvard Medical School, [Drs. Jennifer Haas](#) and [Shelly Greenfield](#), both Harvard Medical School graduates, are currently serving on the faculty of their alma mater. Dr. Greenfield, an addiction psychiatrist and epidemiologist, is an assistant professor of psychiatry and medical director of the Alcohol and Drug Abuse Ambulatory Treatment Program at McLean Hospital in Belmont, Massachusetts. Dr. Haas is an associate professor of medicine at Harvard University and at the Brigham and Women's Hospital. [Dr. Martha Swift](#), another Harvard Medical School graduate, is currently a teacher and finance director at the Brookview School, International Montessori Academy, in Benton Harbor, Maine. [Dr. Inna Goldberg](#), yet another Harvard Medical School graduate, is a radiology specialist at the Lahey Clinic in Massachusetts and assistant professor at Tufts University School of Medicine. Dr. Goldberg emigrated from Russia in 1980.



Also in the health sciences, clinical psychologist [Dr. Janet Plotkin Borenstein](#) maintains a private practice in Manhattan where she specializes in treating loss, bereavement and trauma. In addition, Dr. Plotkin Borenstein has provided pro bono mental counseling for the Red Cross and has served as the clinic director of the Parnes Clinic at Yeshiva University for the past three years. [Dr. Kimberly Yonkers](#), a Columbia University graduate, is currently an associate professor in the Department of Obstetrics and Gynecology and Reproductive Sciences at the Yale University School of Medicine. [Dr. Toni Abrams Weintraub](#) is assistant medical director of Tufts Health Plan and a consultant on community health and prevention issues.

[Anna Gelpert](#), another accomplished Russian émigré, is





### THE ORPHAN DOCTOR: ALUMNA JANE ARONSON, MD

Alumna **Jane Aronson, MD**, is a leader in the field of adoption medicine. She has also distinguished herself as the founder and medical director of the Worldwide Orphans Foundation, a non-profit organization dedicated to improving conditions in orphanages around the world. Since she began treating orphans, Dr. Aronson has watched over the health of more than 4,500 adopted children and maintains a private practice in that specialty, the International Pediatric Health Service in Manhattan. Highly acclaimed for her work as “the Orphan Doctor,” she has been profiled in *The New Yorker* and *The New York Times*.

After receiving her BA from Hunter College in 1976, Dr. Aronson taught for ten years in various public and private schools before returning to her lifelong ambition of becoming a doctor. Self-supporting and determined, she worked her way through the University of Medicine and Dentistry of New Jersey. Her love of children led her to pediatrics; her interest in infectious diseases directed her to answer the demand for comprehensive medical care for international children adopted in the United States.

In the early 1990’s Dr. Aronson began traveling extensively in order to study the conditions of orphanages around the world. Realizing that not every child would be adopted, and determined to improve conditions for these children, Dr. Aronson founded the Worldwide Orphans Foundation in 1997. The WWO has since trained and sponsored over forty “Orphan Rangers,” who are medical, university and health care professionals who live and work in orphanages in Asia, Africa, Latin America and Eastern Europe.

In response to the growing global AIDS epidemic, WWO has developed projects in Vietnam and in Ethiopia to address the needs of orphans infected by the disease, both by providing life-saving treatments and by training local physicians in the prevention, diagnosis and treatment of pediatric HIV/AIDS.

Dr. Aronson expressed gratitude toward JFEW for her scholarship, a small step in her exceptional career, which has transformed the lives of countless families. “It is amazing, and of course, extremely gratifying to see the rapid growth and development in recently adopted children,” she says.

School of the Arts in New York.

“Ever since I can remember I’ve been passionate about architecture,” says **Irina Chernyakova**, whose family emigrated to this country from Russia when she young. She graduated from Brooklyn Technical High School with a Silver Medal for Excellence in Architecture, and finished her first year of architectural studies at Cornell University. Because her parents are working to pay off their own educational loans, having had to retrain after arriving here, her alumnae scholarship came as a much welcome way to ease the cost of her second year at Cornell.

**Chana Klein** is one of twelve siblings. Married and the mother of two young children, she is working to attain a degree in occupational therapy. The alumnae scholarship she was awarded this year is helping her to continue her studies at Touro College in Brooklyn.

**Roseanne Levine** has always been interested in women’s health, and in mental health in particular. Married and the mother of six children, two of whom have special needs, she managed to complete a BA in psychology at Touro College. Her JFEW scholarship will help her to continue her work towards an MSW at the Wurzweiler School of Social Work at Yeshiva University, where she is specializing in women’s mental health issues.

At about the time **Lindsey Kaufman** began her undergraduate studies at Union College in Schenectady, NY, her father was diagnosed with a serious, life-threatening illness, and her family underwent significant financial loss, all of which spawned in her a deep interest in family counseling. “Social work is my passion,” she says, at the same time acknowledging that it is a low paying profession, and that she has thousands of dollars of student loans to repay. Thanks to her alumnae scholarship, she is now working towards her MSW in advanced clinical social work at Columbia University.

When **Cheryl Gellis** found herself a single mother without sufficient income from her secretarial position to support her son, she felt the need to change her situation by returning to school to pursue a profession that would better her financially. Her JFEW scholarship has enabled her to enter an accredited degree program in Nassau County with the goal of becoming a court reporter.

**Visit our new Web site at [www.jfew.org](http://www.jfew.org)!**

*Contributions to the Jewish Foundation for Education of Women are fully tax-deductible as allowed by law and greatly appreciated. Checks should be sent to the Foundation offices at 135 East 64th Street, New York, NY 10021.*

a professor on the faculty of the Rutgers University Graduate Division of Global Affairs. Prof. Gelpern has served in legal and policy positions at the United States Treasury Department and is a visiting fellow at the Institute for International Economics, a Washington think tank.

Amongst the wealth of JFEW alumnae distinguishing themselves in the academic world, **Dr. Marni Kessler**, a specialist in 19<sup>th</sup> century European art, is an assistant professor of art history at the University of Kansas. Her first book is *Sheer Presence: The Veil in Manet's Paris*, (University of Minnesota Press, due out December 2006). A participant in the JFEW Mentor Program, **Dr. Maryanne Dickar** is an assistant professor at the Steinhardt School of Education at New York University, where she joins JFEW alumnae **Drs. Sharon Weinberg** and **Beth Weitzman**. **Dr. Sophia Rosenfeld**, the recipient of numerous academic honors, is currently an associate professor of history and the director of graduate studies in the University of Virginia Department of History. Dr. Rosenfeld is the author of the well-received book, *A Revolution in Language: The Problem of Signs in Late Eighteenth-Century France*, (Stanford University Press, 2001). **Dr. Alyson Waters**, a published translator and scholar of French literature, is currently a lecturer in the French Department at Yale University and the managing editor of the bi-annual publication, *Yale French Studies*. **Sherri Geller**, a Columbia University graduate, is an assistant professor of English at Bucknell University.

In the public sphere, **Adi Shamir**, a graduate of the Cooper Union School of Architecture, now serves as the executive director of the New York-based Van Alen Institute for Public Architecture, an internationally renowned, non-profit organization dedicated to improving design in the public realm. Previously, Ms. Shamir served as dean of the undergraduate programs at the California College of Arts. **Ilene Marcus** received her master's degree in social work and public administration from Columbia University and is currently chief of staff for the Metropolitan Council on Jewish Poverty. Previously, Ms. Marcus was a deputy assistant to Mayor Guiliani as well as executive deputy commissioner at the New York City Human Resources Administration. **Bernadine Joselyn** served seven years as a diplomat with the United States Department of State, taking assignments in Moscow, India and Washington, DC. Ms. Joselyn is currently the director of the Public Policy and Engagement Program for the Blandin Foundation, which is dedicated to strengthening communities in rural Minnesota. **Sharon Neuman**, a graduate of Columbia University, is now section chief of project management and development for drinking water quality control at the Department of Environmental Protection in New York City.

Quite a few JFEW alumnae have met success in the arts. Pianist **Brenda Moore Miller** is an adjunct professor of music

and on the piano faculty at UMass Amherst. Designer and filmmaker **Benita Raphan** has designed everything from the windows at Bergdorf Goodman to *The New York Times* Op-Ed page articles. Her films are in the permanent collections of The Walker Art Center in Minneapolis, The Museum of Fine Arts in Boston and The Cooper Hewitt National Design Museum in New York City. Also a filmmaker, **Marlaine Glickman** directed and produced the acclaimed documentary film *The Commandment Keepers*, which chronicles the 87-year-old Ethiopian Hebrew Congregation in Harlem known by the same name. Ms. Glickman is also a published photojournalist and a full-time editor for *Vogue*. **Jill Dearman** is a freelance writer and editor currently teaching at New York University in the Department of Journalism. Ms. Dearman's publication credits include *The New York Daily News*, *Time Out New York*, *Publishers Weekly*, *Punk* and *Redbook*. **Elaine Pofelt**, senior editor of *FSB FORTUNE Small Business*, has also contributed to *Forbes*, *Working Woman* and *Publishers Weekly*.

We are pleased to note the many JFEW alumnae who are active professionals in the Jewish community. **Rabbi Joan Friedman**, who holds an MA and a PhD in Jewish history from Columbia University, was ordained as a Reform rabbi by Hebrew Union College. Rabbi Friedman is currently the campus rabbi and visiting assistant professor of history and religious studies at the College of Wooster in Ohio. Another alumna of Hebrew Union College, **Cantor Lilia Kazansky**, has been at the Beth David Reform Congregation in Gladwyne, Pennsylvania, for 22 years. **Cantor Jodi Schechtman**, ordained in 1988, is currently in her nineteenth year at Temple Beth Am in Framingham, Massachusetts.



### ALUMNAE PROVIDE SIX SCHOLARSHIPS IN 2006!

In our 125<sup>th</sup> anniversary year, JFEW alumnae support expanded not only in unprecedented numbers but, also, in generosity, enabling us to award six alumnae scholarships this year—a 50 percent increase over the prior year. These special scholarships assist women who have profound financial need because of a combination of factors, from family circumstances to extremely high educational debt.

The theater has held a compelling interest for **Samantha Chavis** since she was a child, beginning with her desire to become an actress and culminating in the realization that it was in dramaturgy—the literary aspect of drama involving the theory and practice of dramatic composition—that she “finally felt at home in my artistic skin.” To that end, she has worked with theater groups throughout the country, including the famous Steppenwolf Theatre Company in Chicago. Thanks to her JFEW scholarship, she is pursuing a Master of Fine Arts degree in dramaturgy at the Columbia University