



The new degree of comfort.®

Level II Tankless Gas

Rheem® IKONIC™

Tear-Down Objectives

Identification of Internal Parts

Proper Removal and Re-installation Procedures

Familiarization



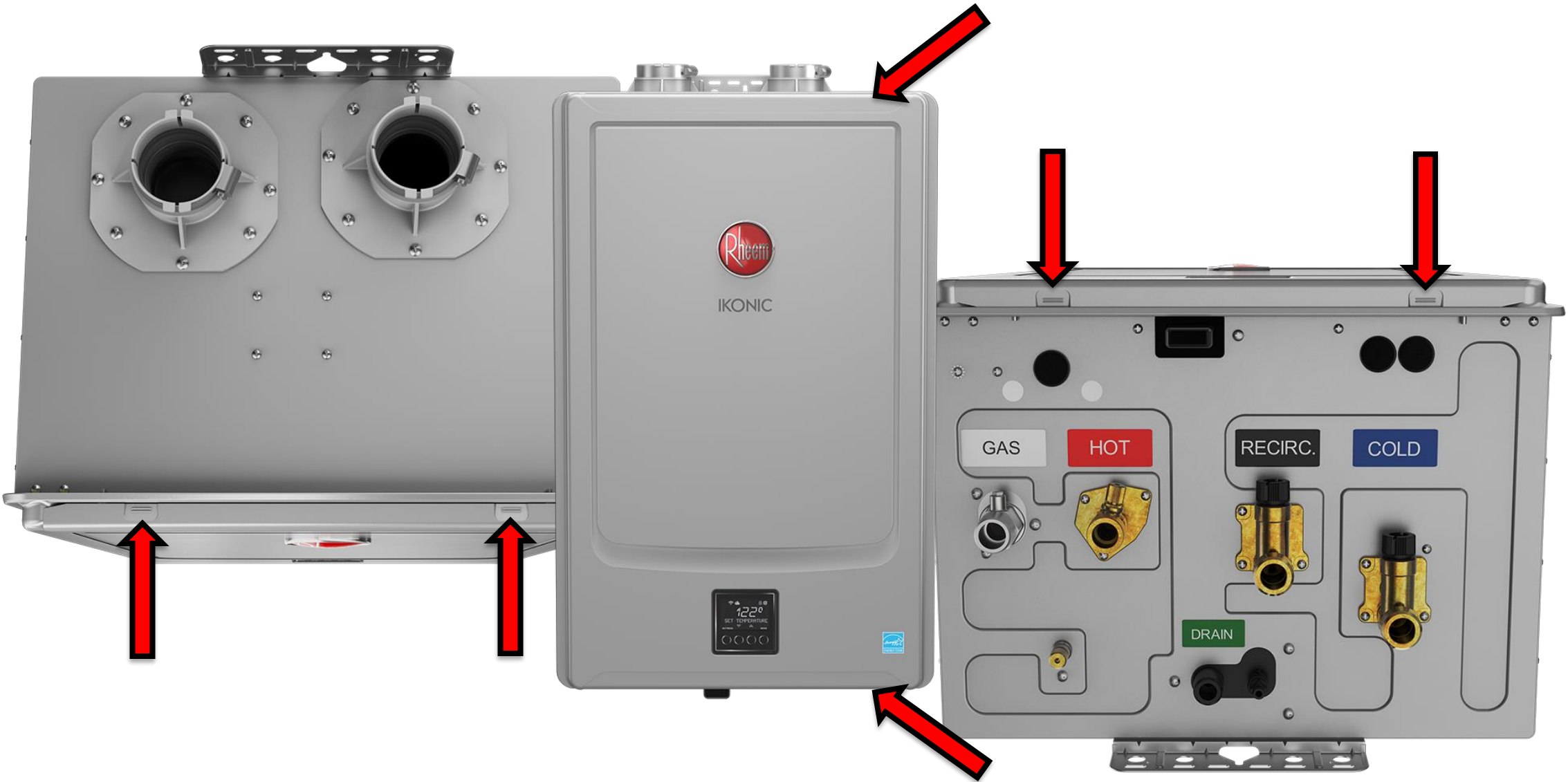
Front Cover Removal

First, confirm power is disconnected

Then, remove plastic screw covers



Removing the Screw Covers



Remove the 4 Screws

The cover will stay hung after the 4 screws are out

Lift up and pull towards you



Keep Screws Separated



Take Pictures

Take from a few different angles

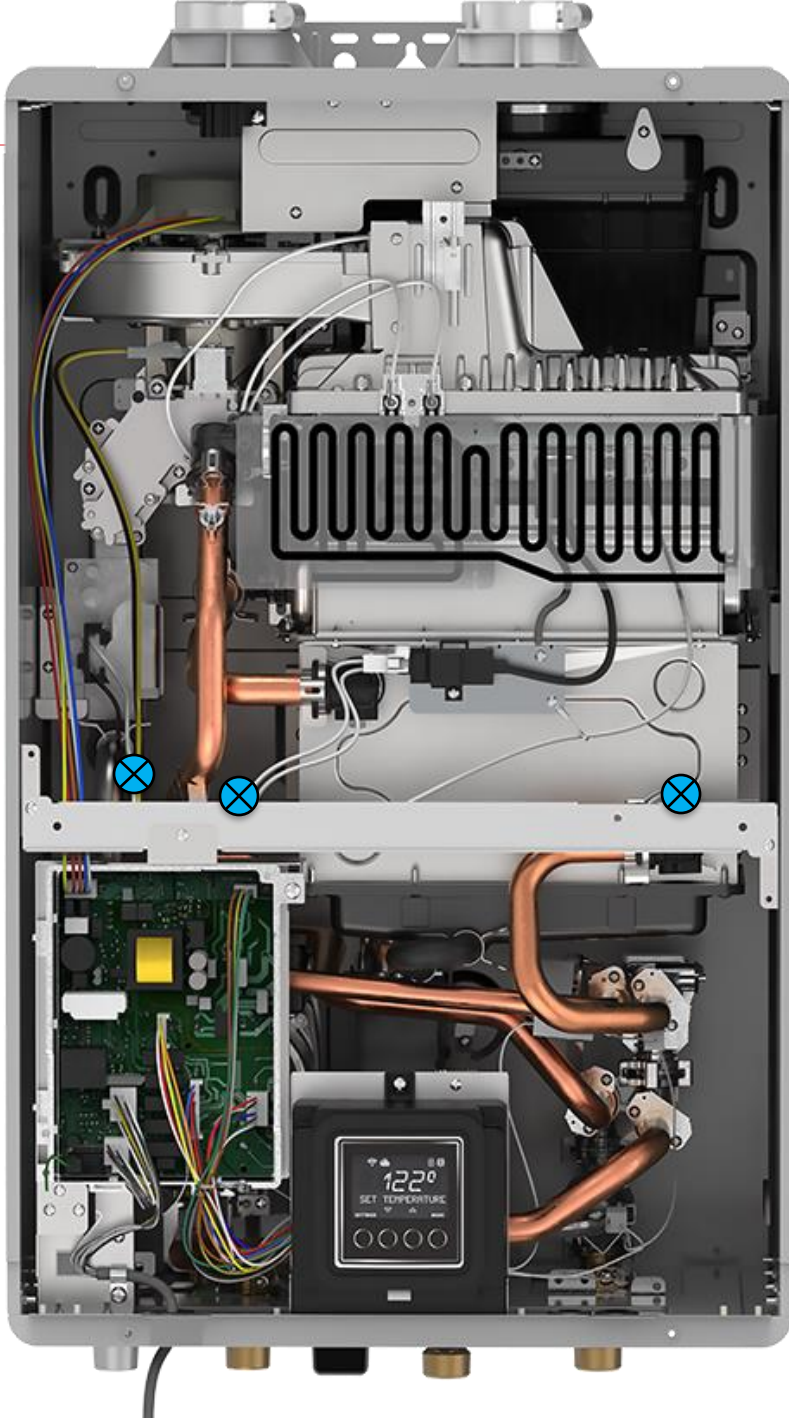


This will help during reinstallation



Remove Cross Brace

Remove 3 Screws
Detach Blower Wire Retainer



Natural Gas to LP Field Conversion

Locate the Orifice Block

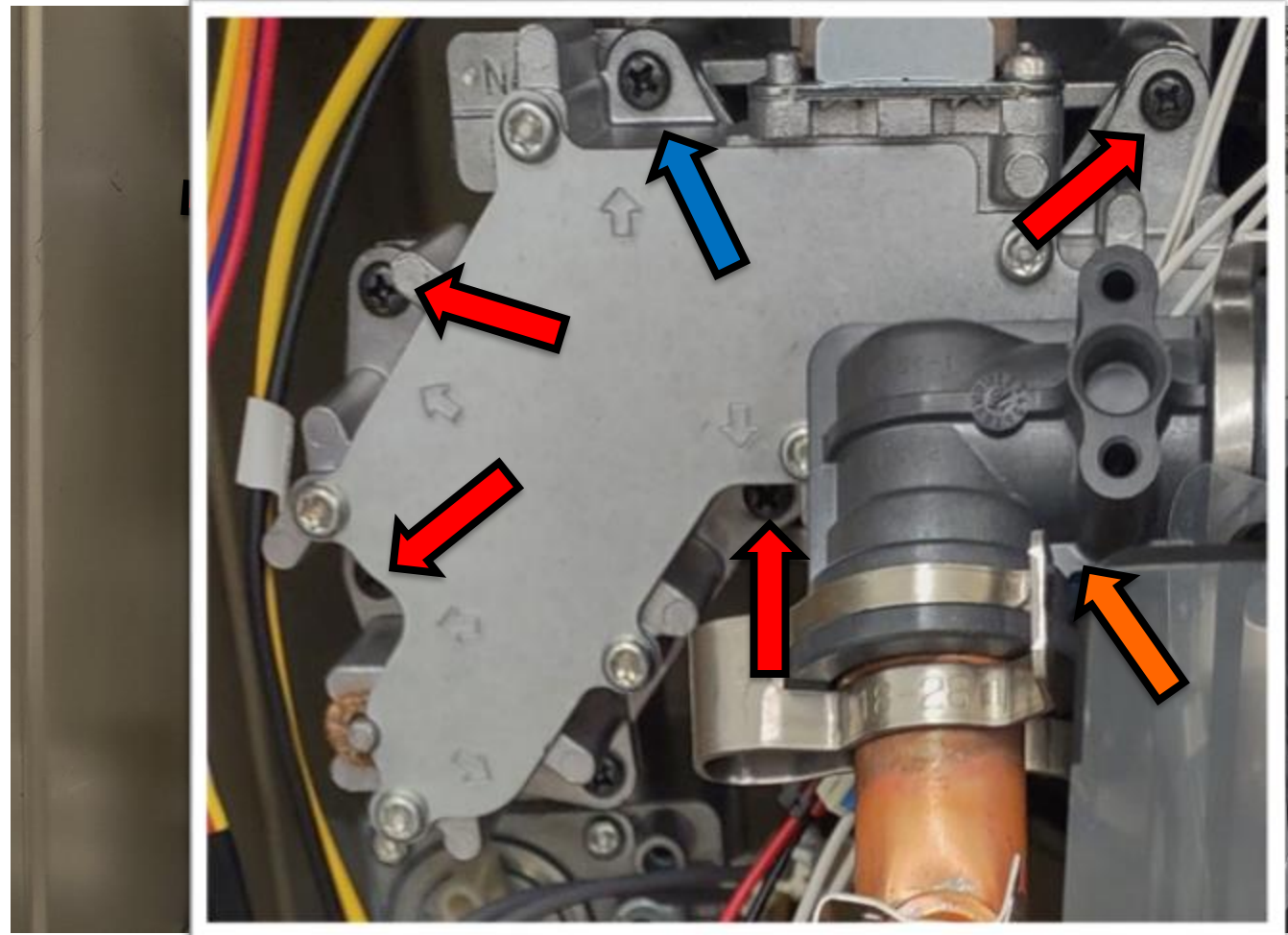
Disconnect the electrical connector

Remove the 7 screws

Tip:

-Take the **blue** one out last

-Move the water tube clip around to get to the **orange** one



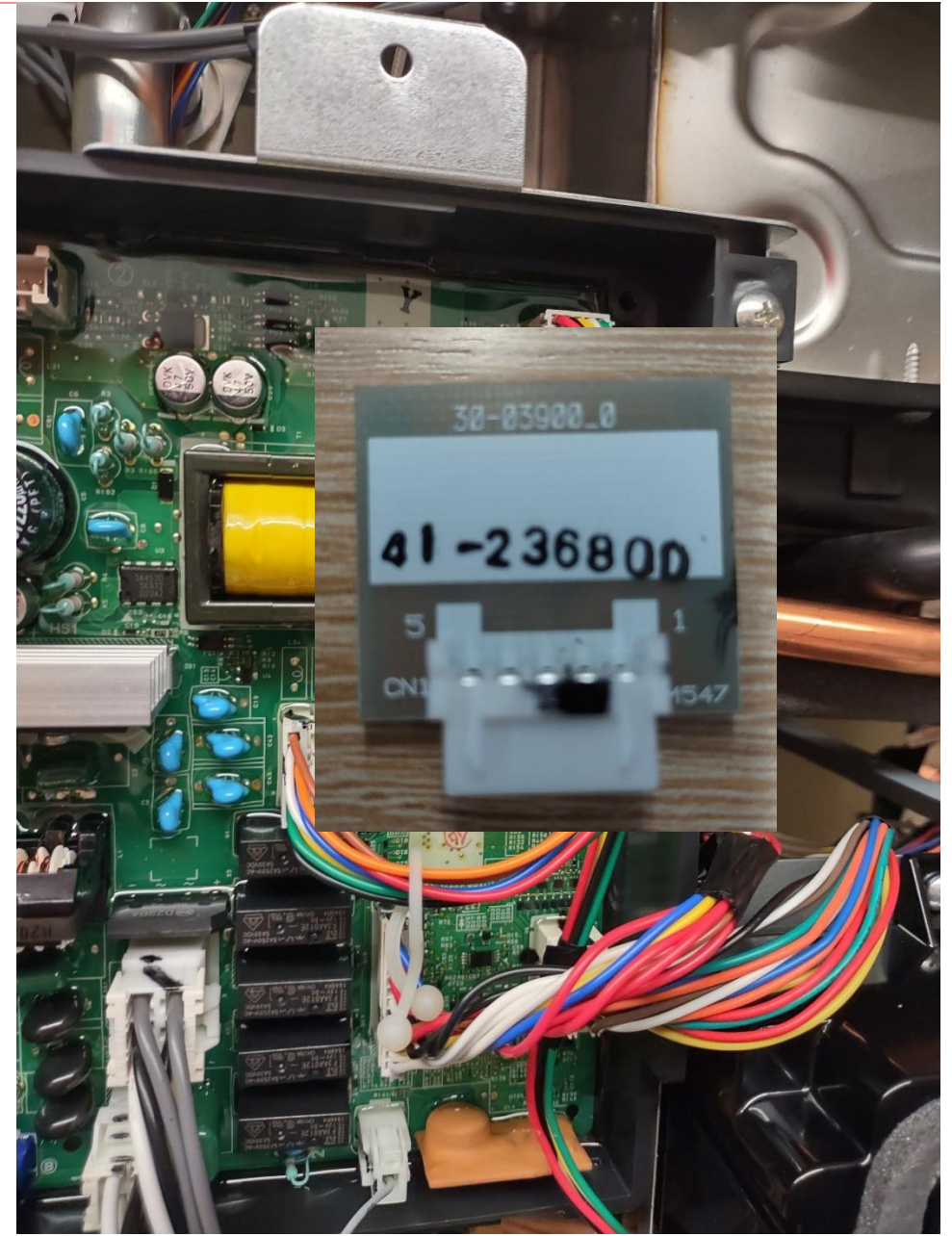
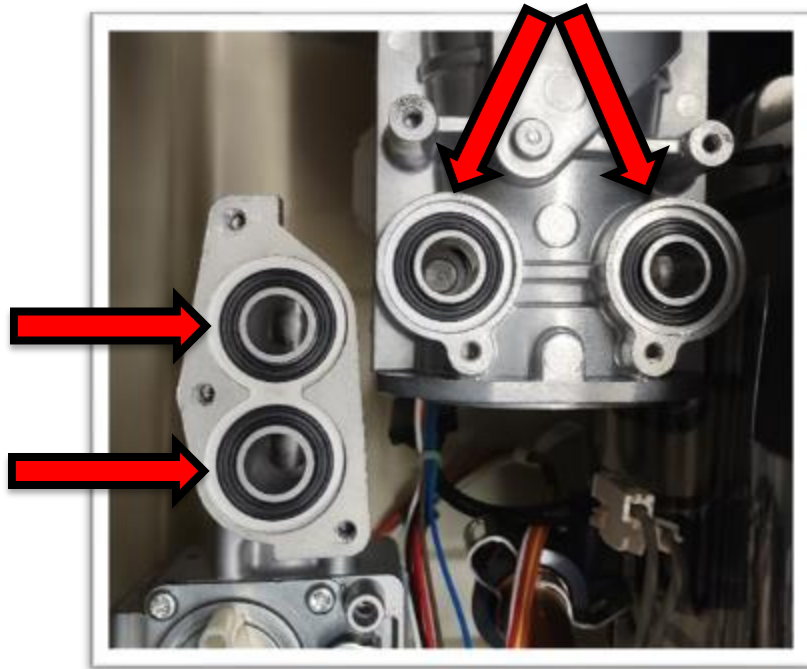
Natural Gas to LP Field Conversion

Remove and secure the 4 gaskets

(We'll reinstall them later)

Remove Natural Gas Chip from Control Board (...80)

Install LP Gas Chip (...30)



Natural Gas to LP Field Conversion

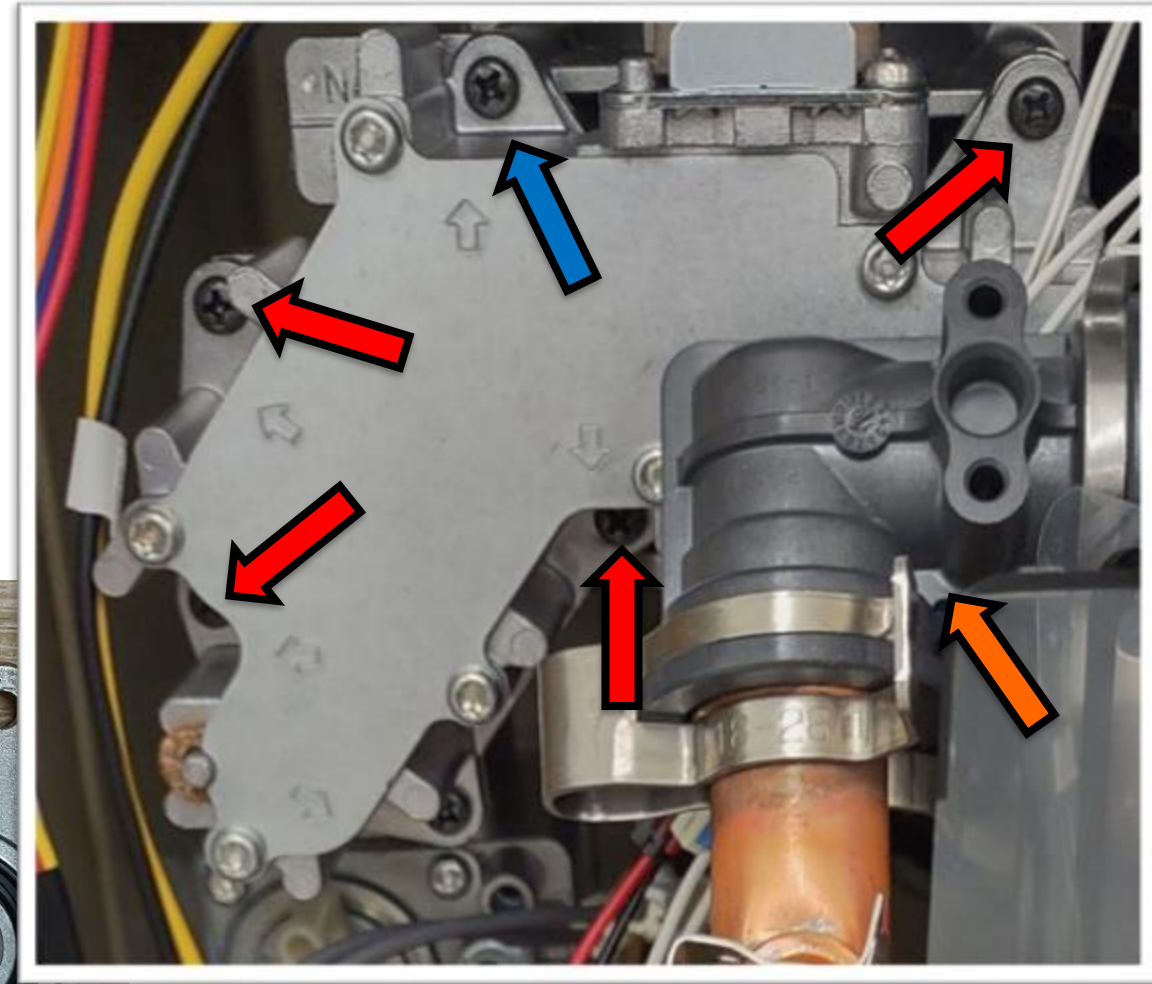
Turn Orifice Block over

Remove retaining screw and remove plate

Identify which manifold plate is installed

(It will have a dimple)

Replace gaskets and install LP plate



Natural Gas to LP Field Conversion

At this point, you'd need to fill out and install the Fuel Conversion stickers with your information

We'll reinstall the Orifice Block later

Directly onto the Orifice Block

THIS CONTROL HAS BEEN CONVERTED
FOR USE WITH LP GAS.
CETTE COMMANDE A ÉTÉ CONVERTIE
POUR FONCTIONNER AU GAZ LP.



AX5213 Rev 02



Inside, right panel at the top



THIS WATER HEATER WAS CONVERTED ON
(DAY-MONTH-YEAR) (A)
TO LP GAS WITH KIT NO. RTG20242D BY (B)

(name and address of organization
marking this conversion, who accepts
the responsibility for the
correctness of this conversion.)

TYPE OF GAS: LP GAS

MAX. INLET GAS PRESSURE: 13.0" w.c.

MIN. INLET GAS PRESSURE: 8.0" w.c.

MAX. INPUT: 199,900 BTU/HR

MIN. INPUT: 11,000 BTU/HR

MAINFOLD PRESSURE: -0.20" w.c.
(FOR MAX. INPUT)

CONVERTED TO LP GAS
WITH KIT NO. RTG20242D

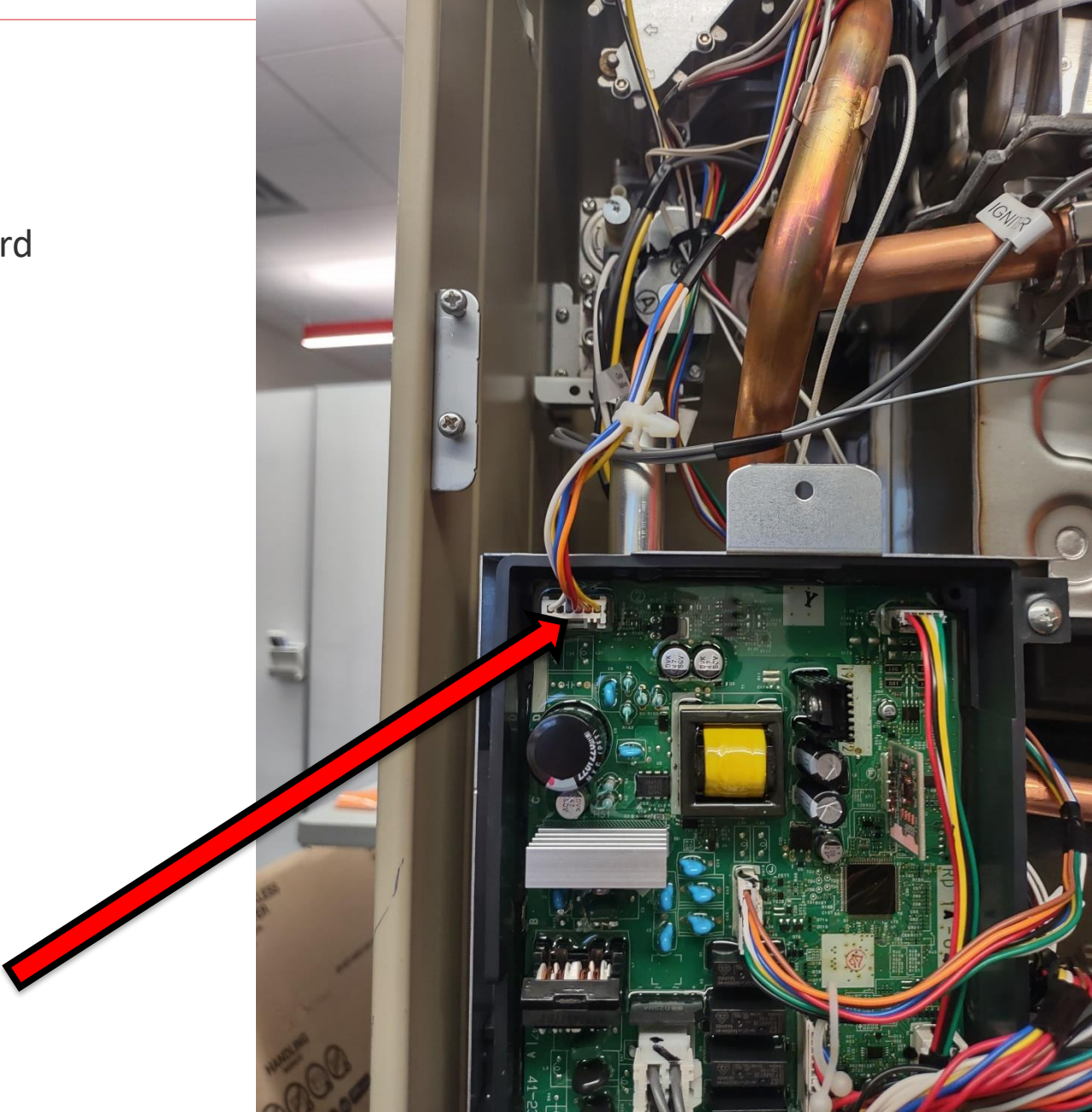
ORIFICE: 0.11" w.c., 0.20" w.c.



AX5214D

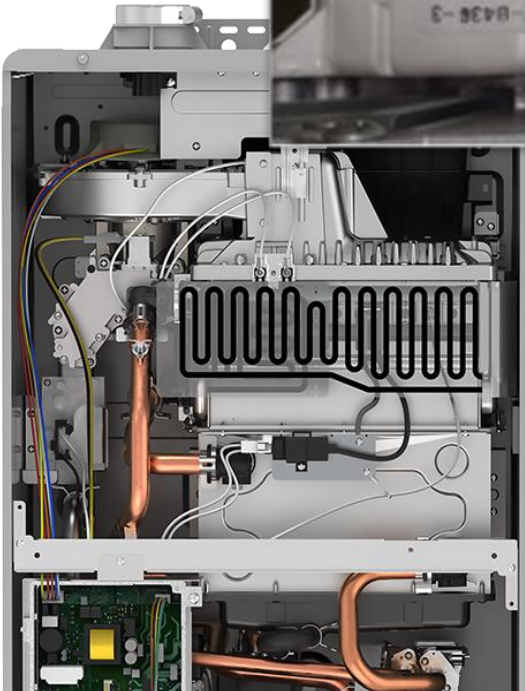
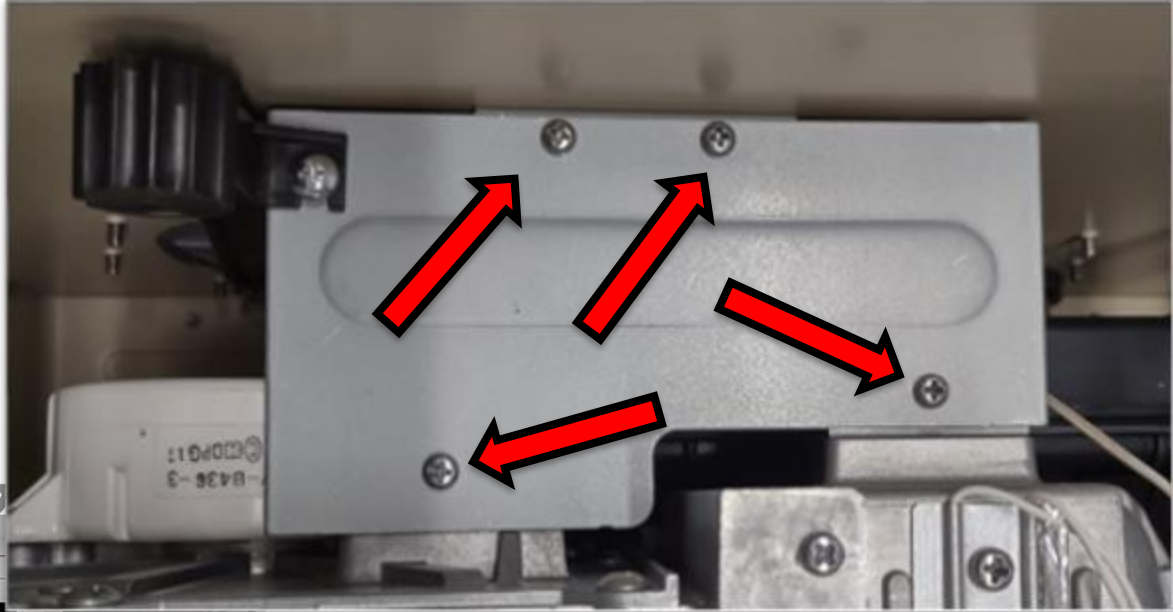
Blower Assembly Removal

Disconnect Blower wiring connector from the Control Board



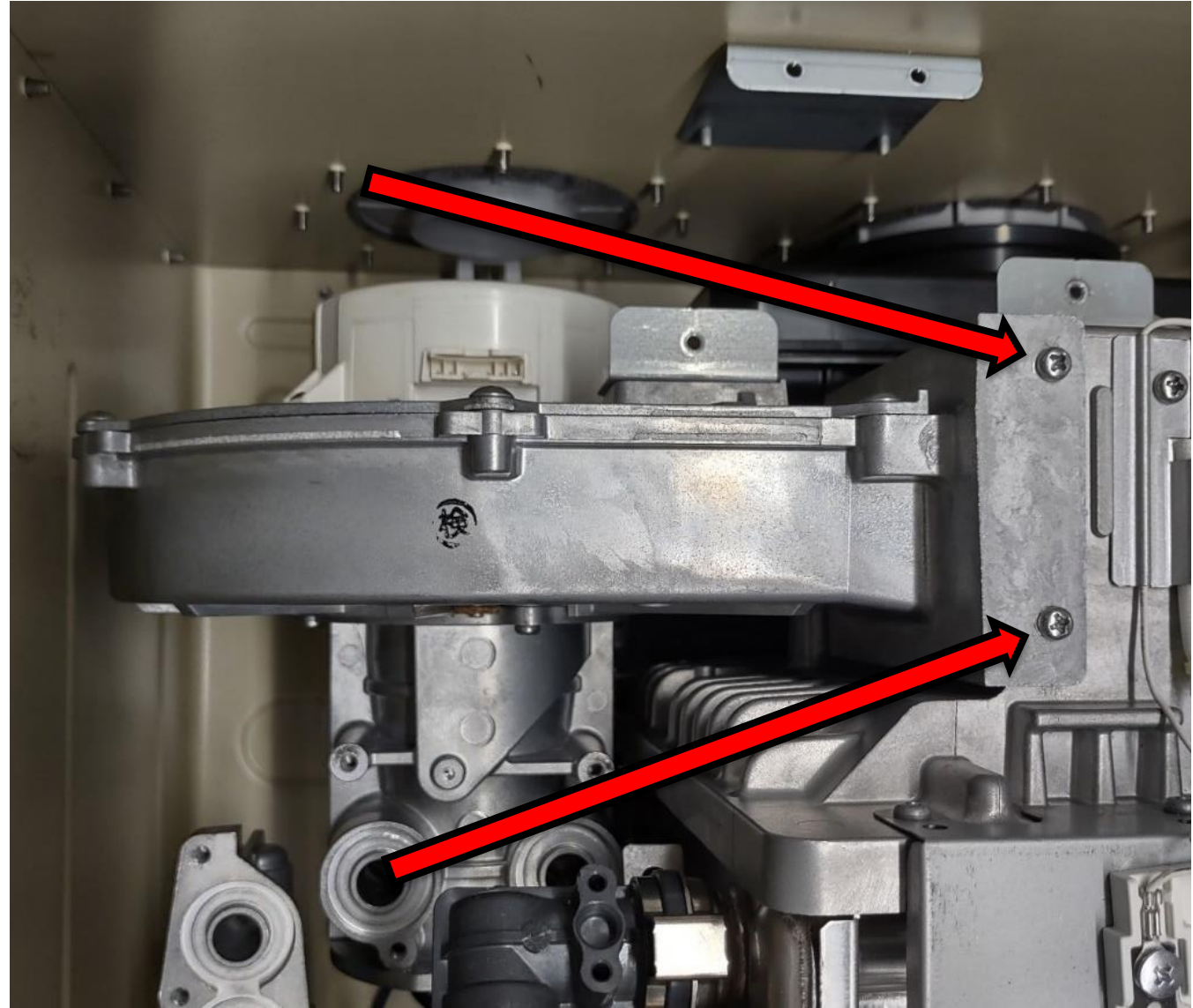
Blower Assembly Removal

Remove the 4 Blower Assembly Bracket screws



Blower Assembly Removal

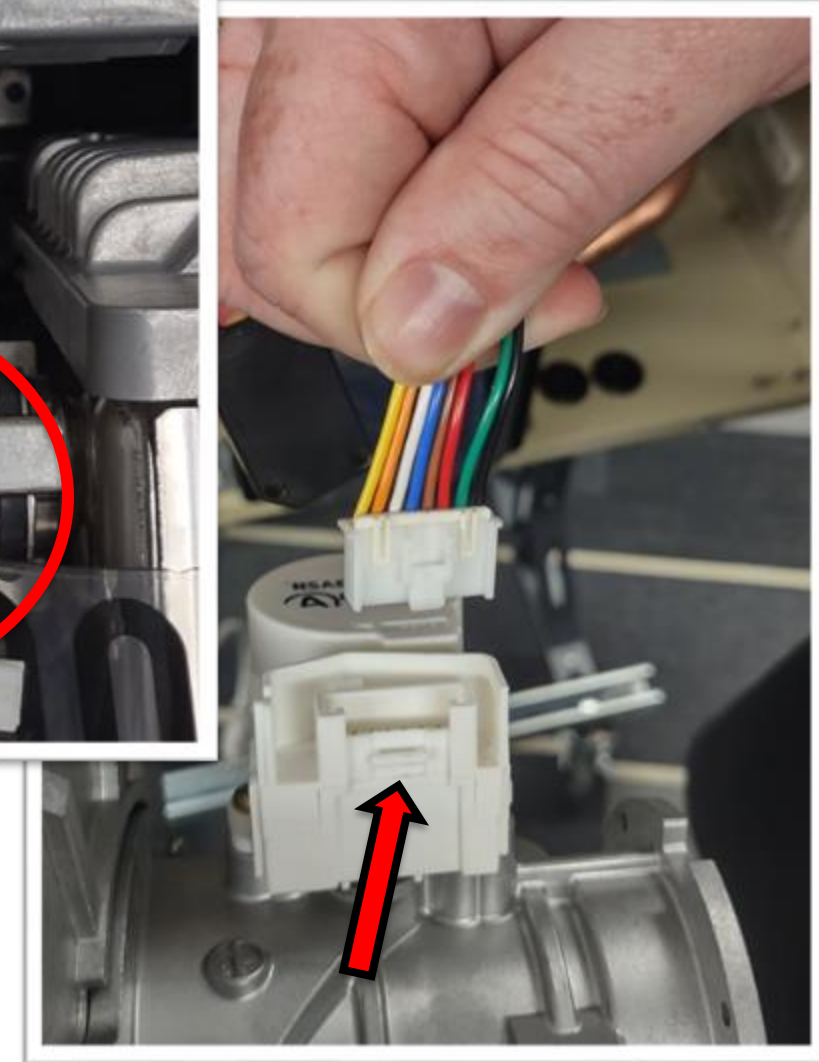
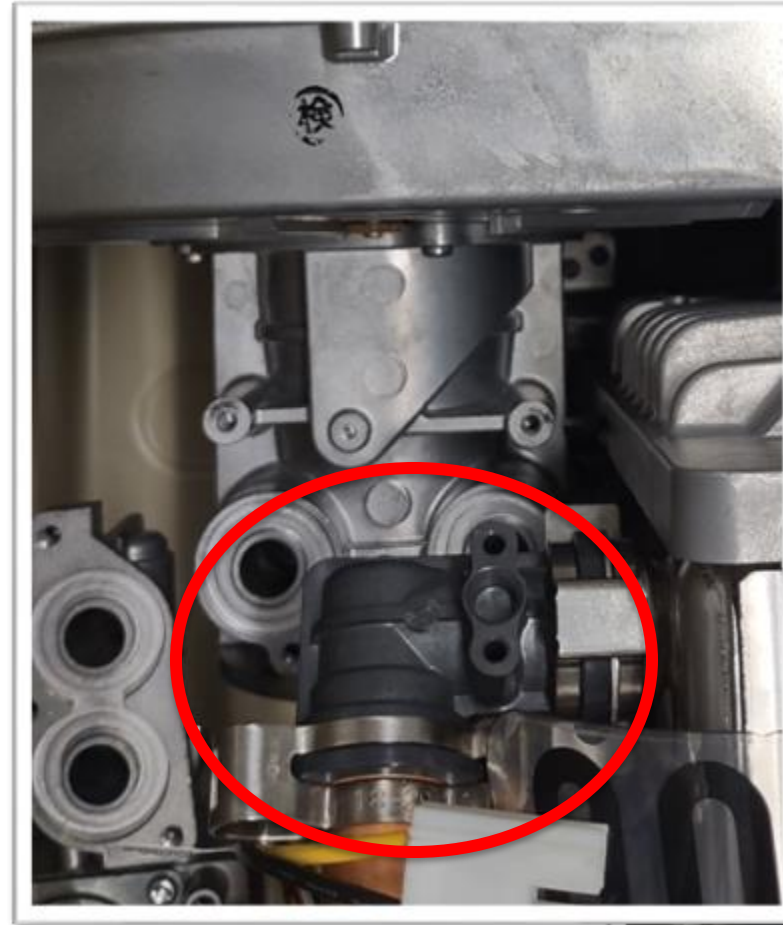
Now, remove the 2 screws holding the Blower Assembly to the Upper Manifold while supporting the Blower Assembly



Blower Assembly Removal

Carefully remove the Blower Assembly from the cabinet, mindful of the **plastic water piping elbow**

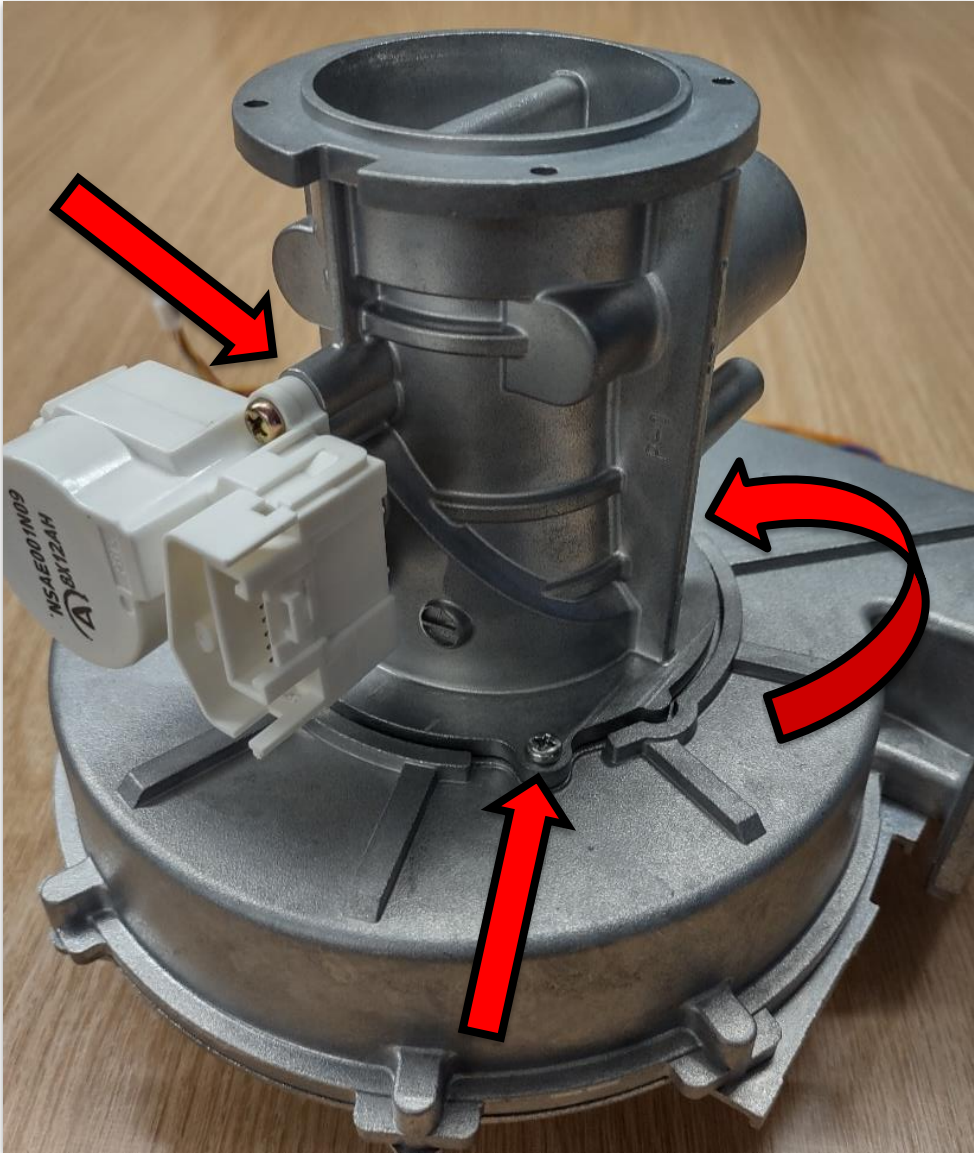
Disconnect the wiring connector from the back of the Venturi



Venturi Removal

Remove the 3 screws that attach the Venturi to the Blower Housing

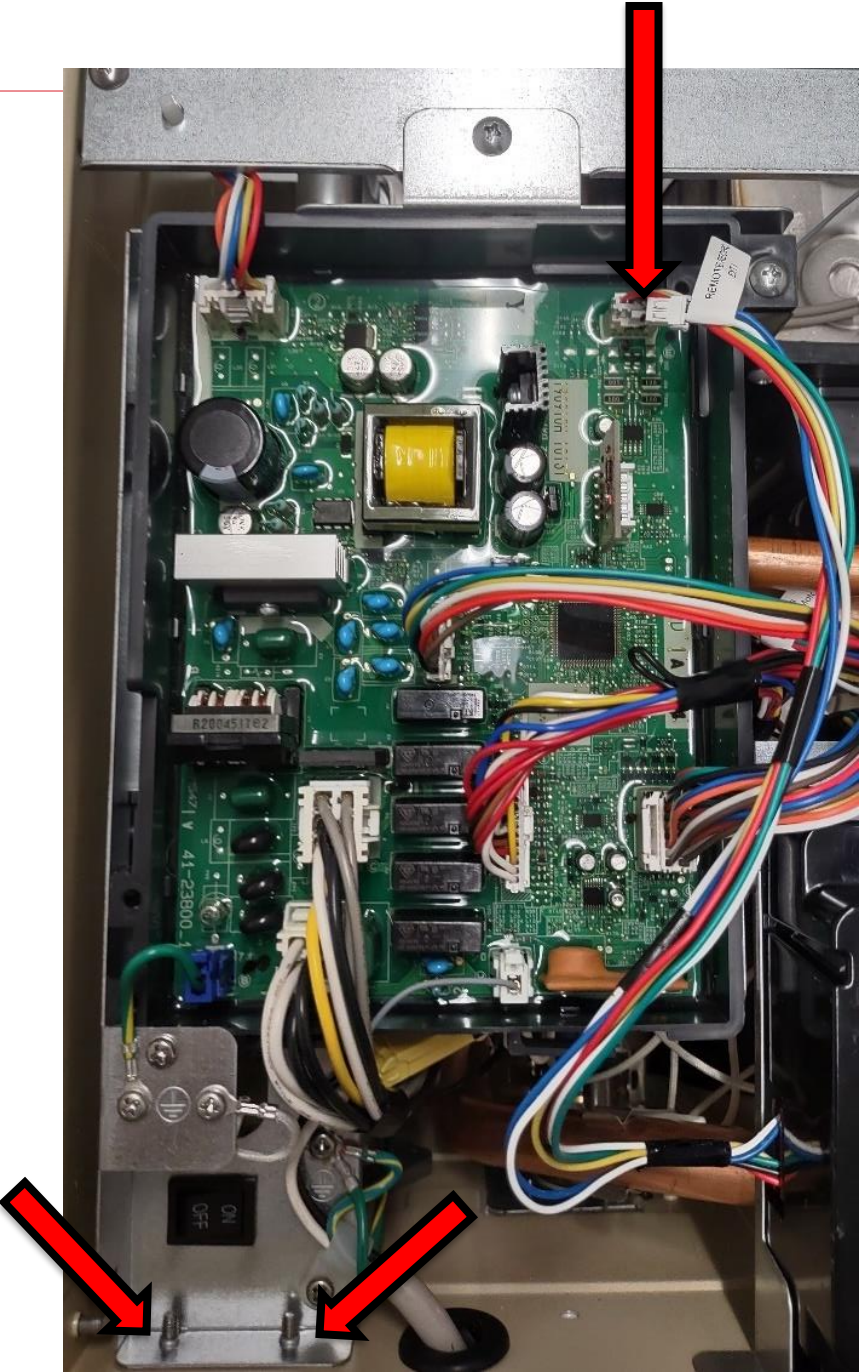
The Blower Motor and Housing are replaced as one assembly



Control Board

Disconnect the User Interface wire connector from the Control Board

Remove the 2 screws from the outside bottom of the cabinet

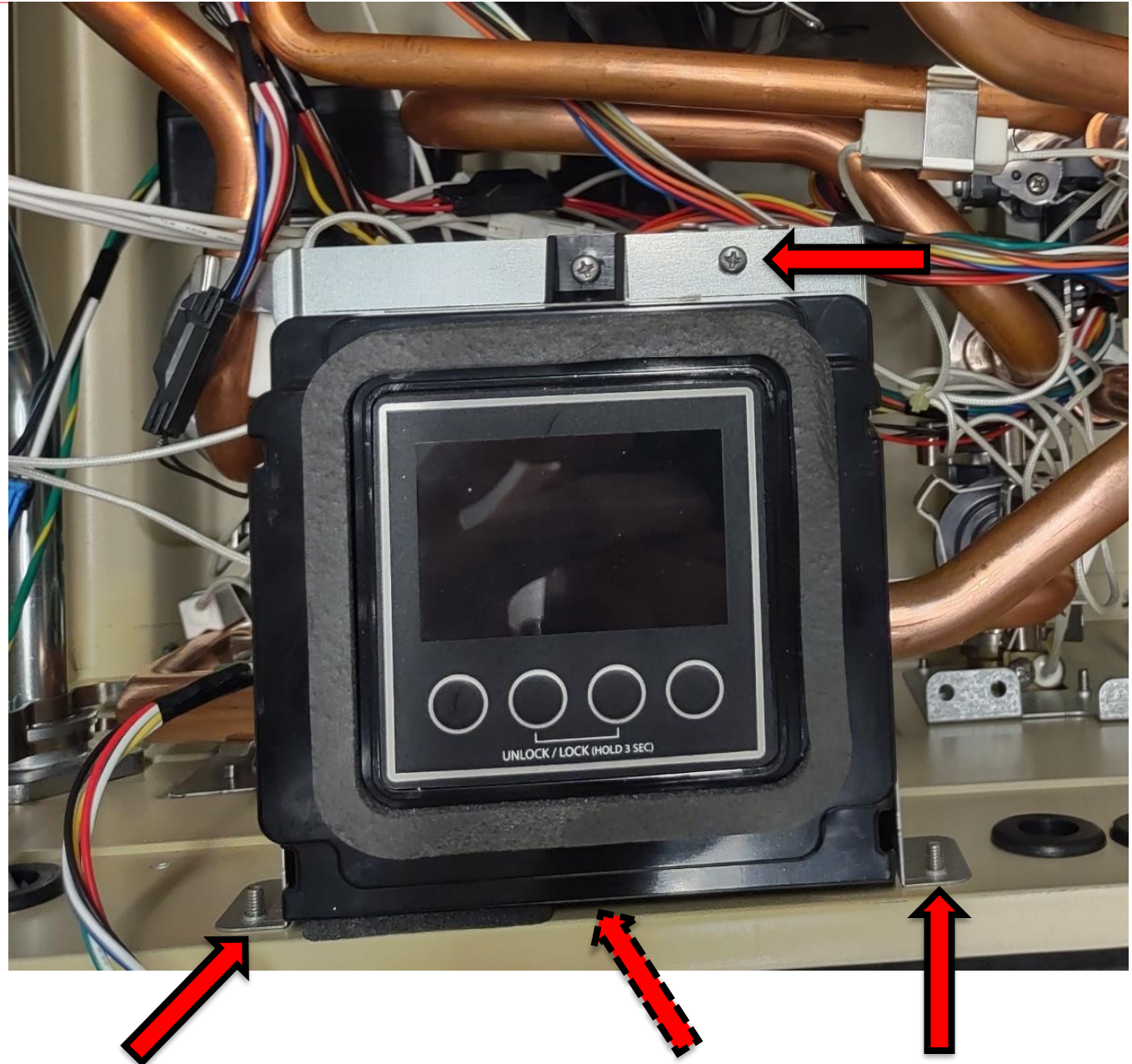


User Interface

Remove the 3 screws from the outside
bottom of the cabinet

(Take note of the coarse-thread screw
in the middle when reinstalling)

Remove the 1 bracket screw at the top

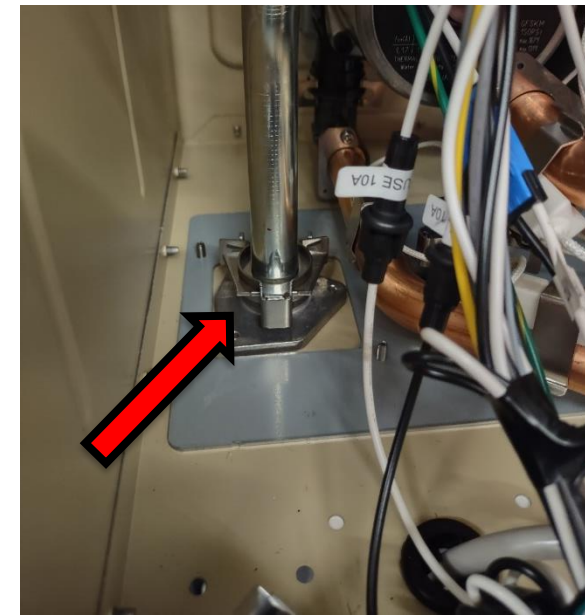
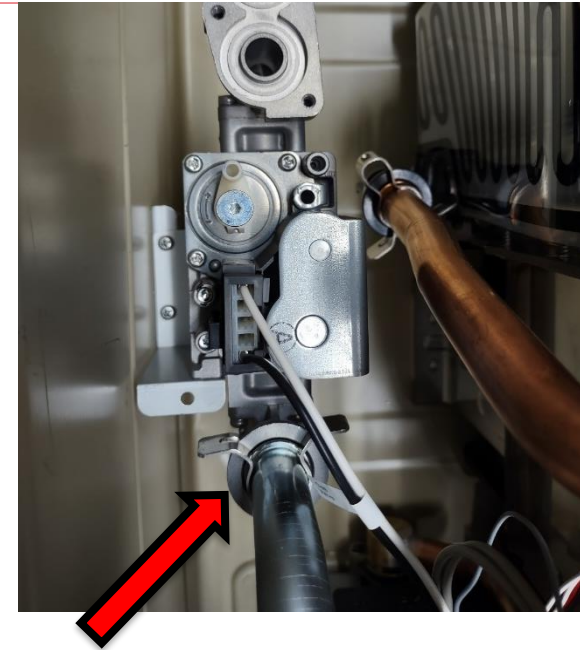


Recirculation Pump - SR

First, remove the Gas Line

Undo the clips at the top and bottom
and then remove the pipe

The gas line uses double o-rings.
The second one might slip off.
Don't lose it!



Recirculation Pump - SR

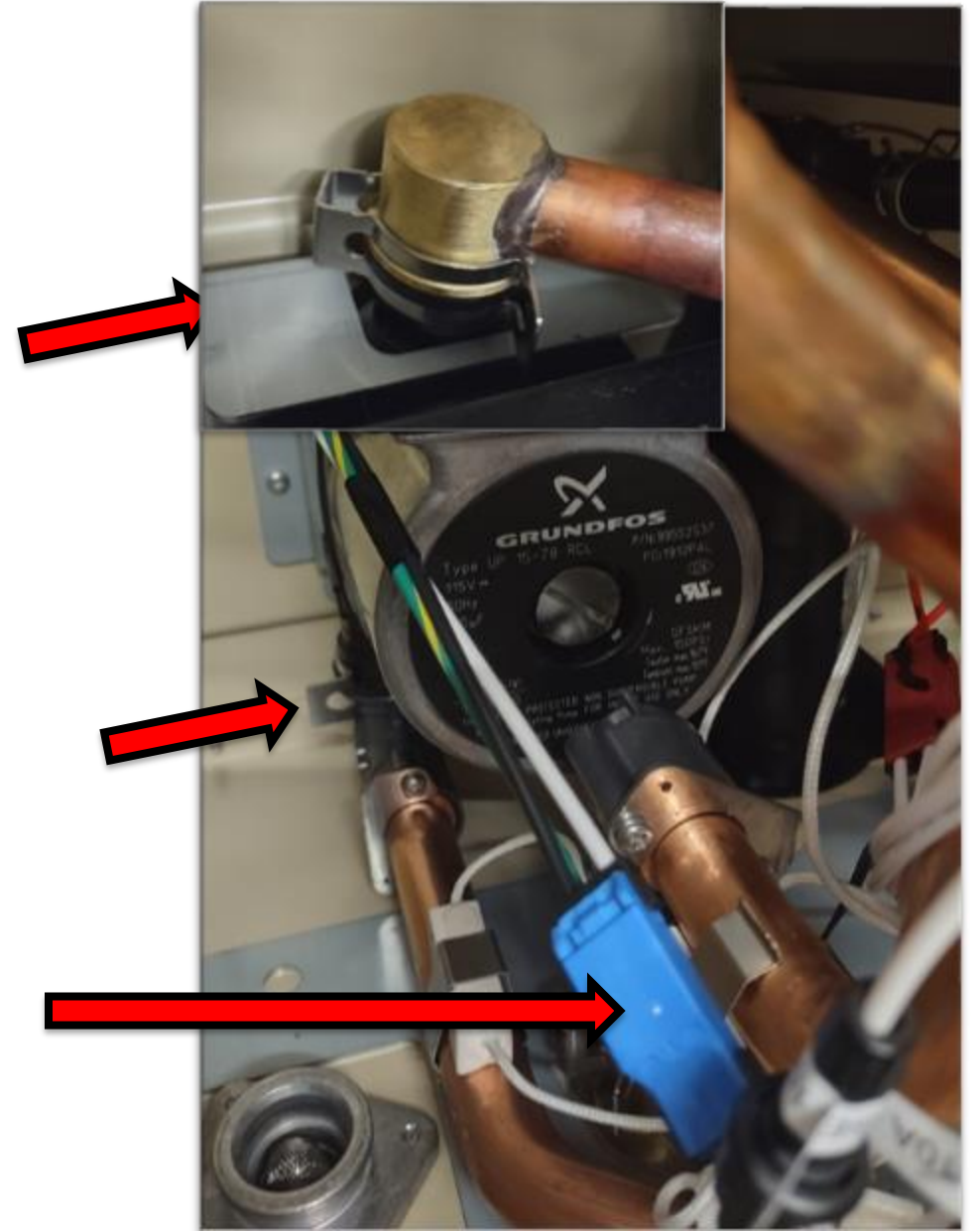
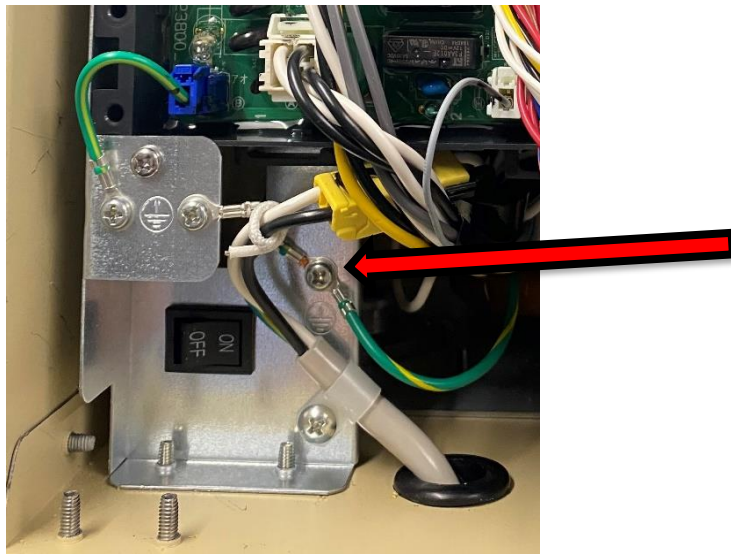
Remove 5 screws holding pump to back of cabinet

Disconnect electrical connector (blue)

Remove water connector clips from the top and bottom

Grab pump with both hands and lift up and off the bottom fitting, then remove water pipe from the top

Disconnect the ground wire and reinstall the screw



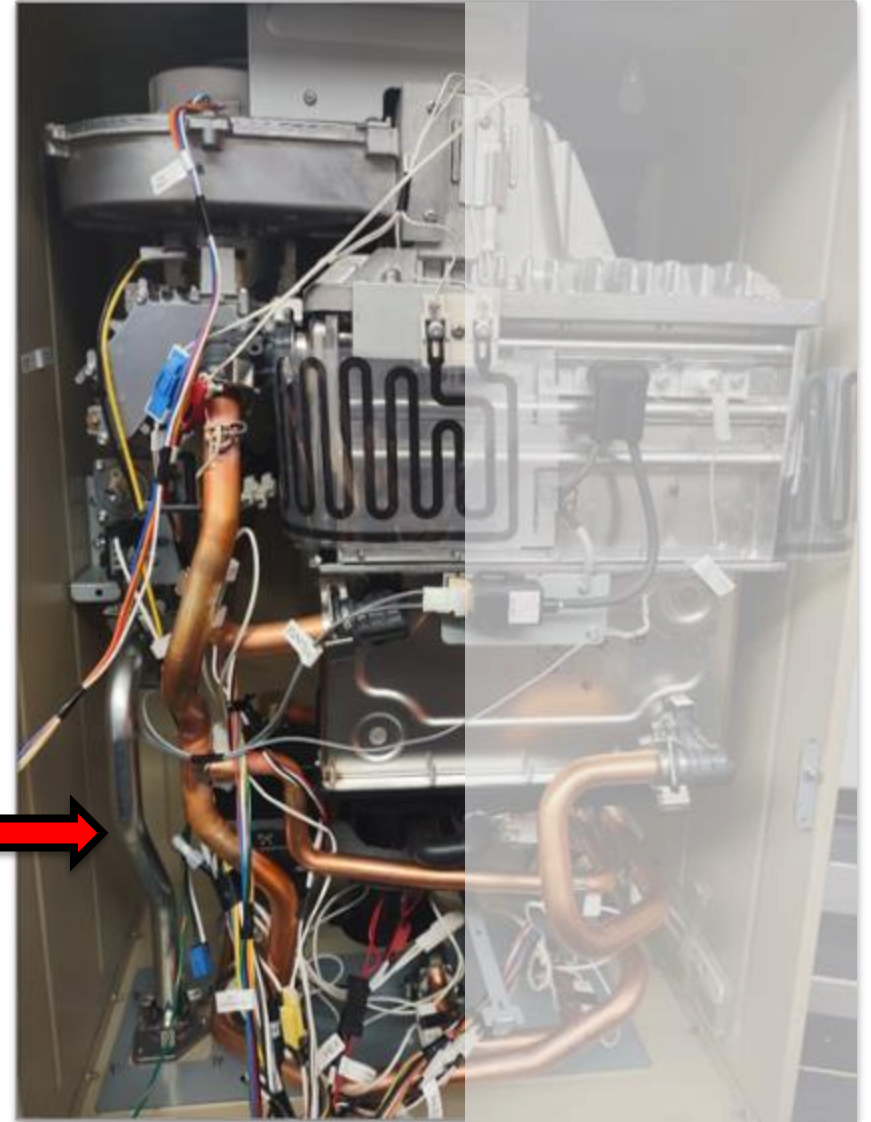
Reassembly (Left Side of Cabinet)

Reinstall the Recirculating Pump

Remember the **blue** electrical connector

You'll reconnect the **ground wire** later

Reinstall the Gas Line



Reassembly (Left Side of Cabinet)

Reinstall the Blower Assembly

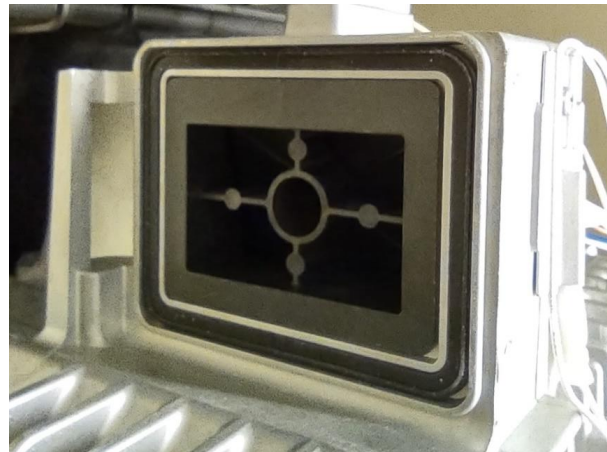
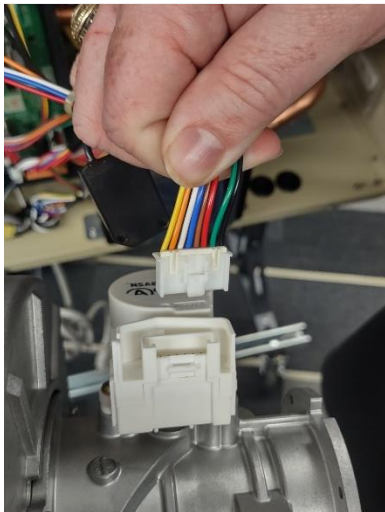
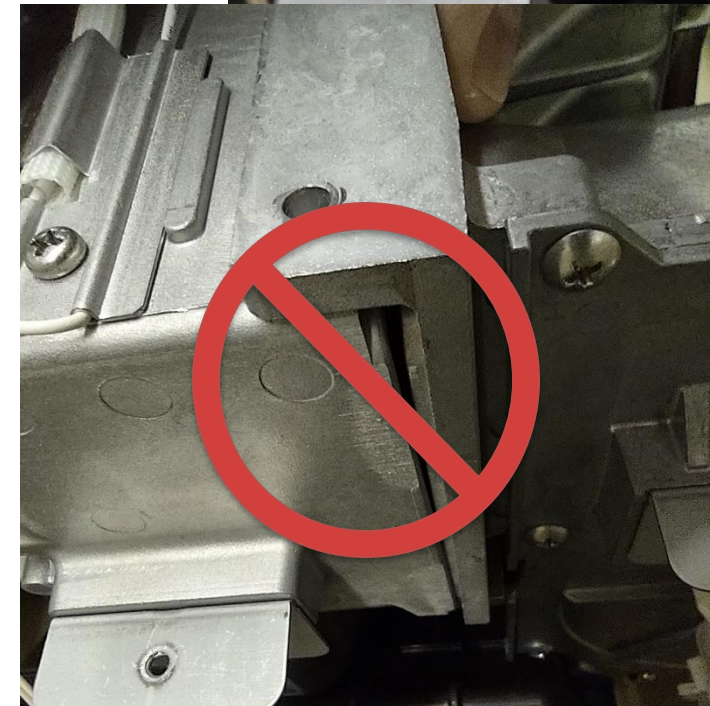
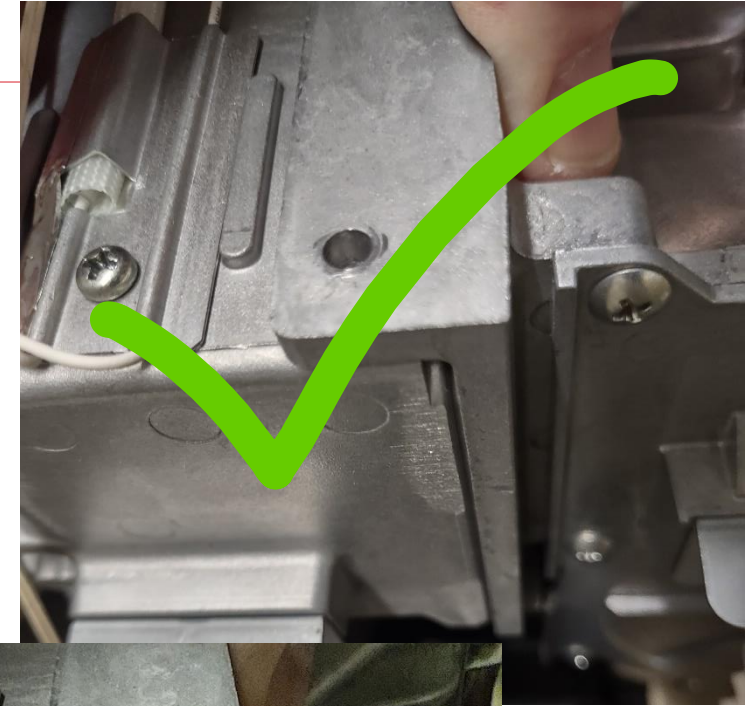
Reconnect wiring connector

Make sure One-Way Valve is properly seated

Firmly hold the assembly in place BEFORE attempting to insert the 2 screws

It is easy to cross-thread these 2 screws

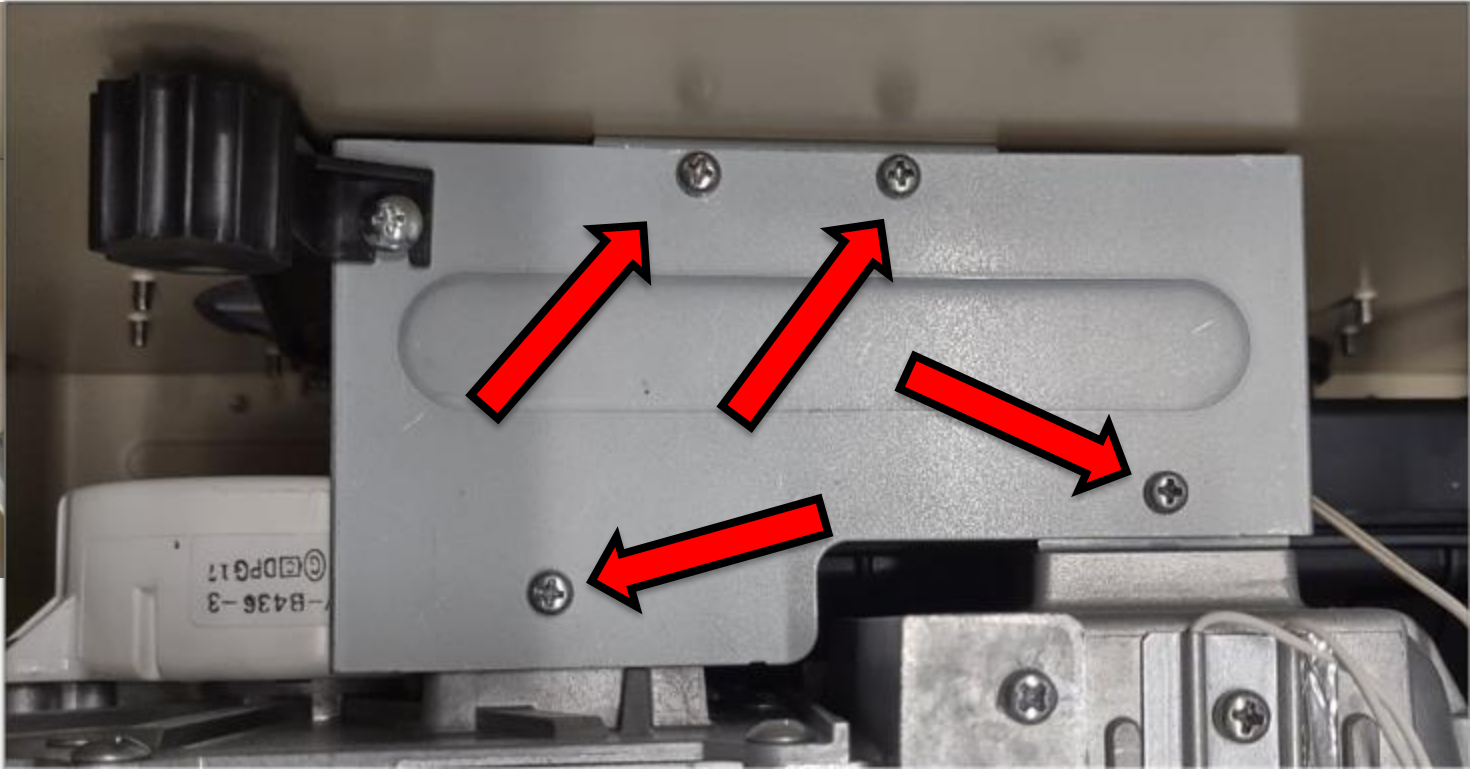
An improperly seated Blower Assembly is a fire hazard!



Reassembly (Left Side of Cabinet)

Reinstall the Blower Assembly Bracket

Use the filter tab on the back wall
as your guide



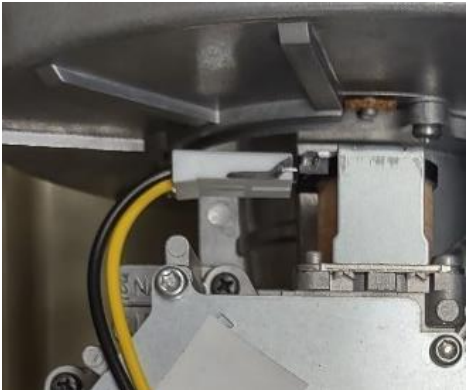
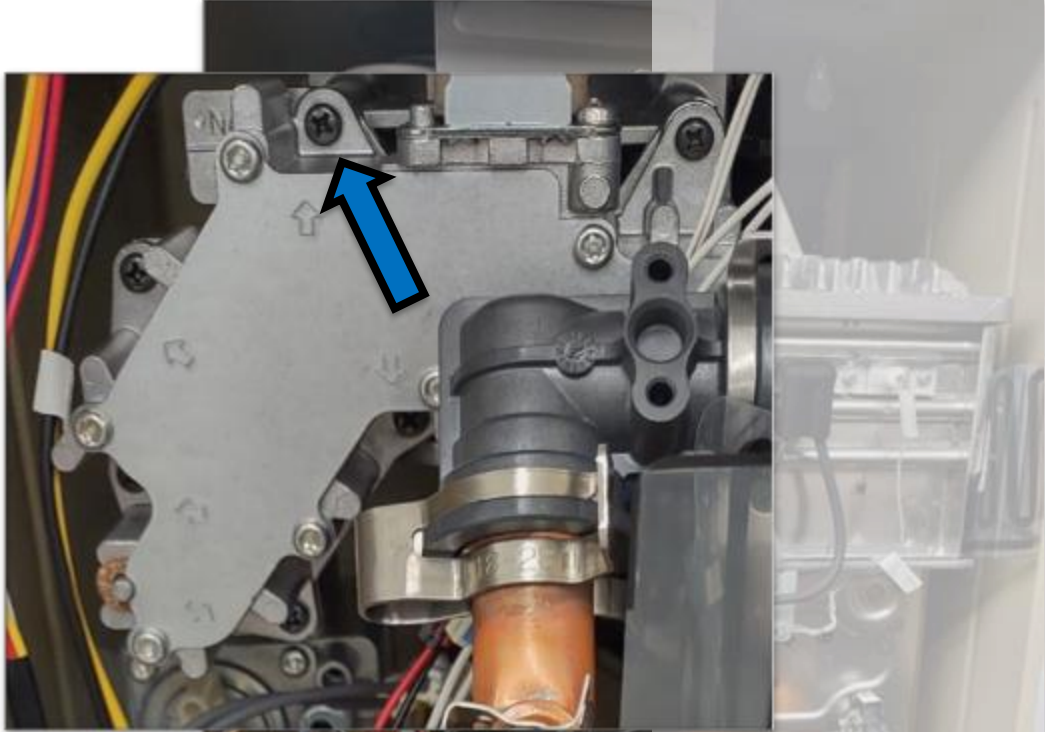
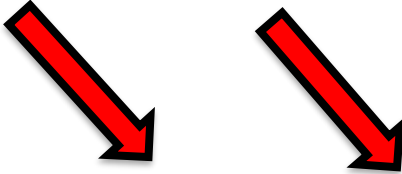
Reassembly (Left Side of Cabinet)

Reinstall the Orifice Block

Start with the blue screw

Don't forget the washers

Reconnect the electrical connector

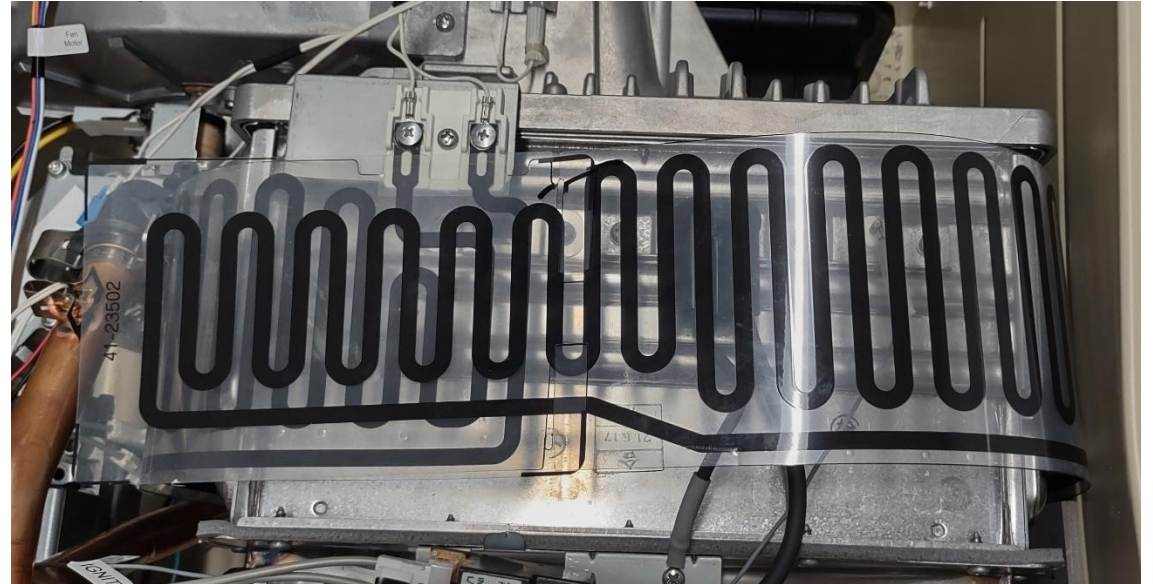


Do not reinstall the Control Board or User Interface yet!

Ignitor and Flame Rod

Carefully open the Overheat Film Wrap to expose the Ignitor and Flame Rod

- Don't tear or damage the wrap
- If it is damaged, the entire water heater will have to be replaced!



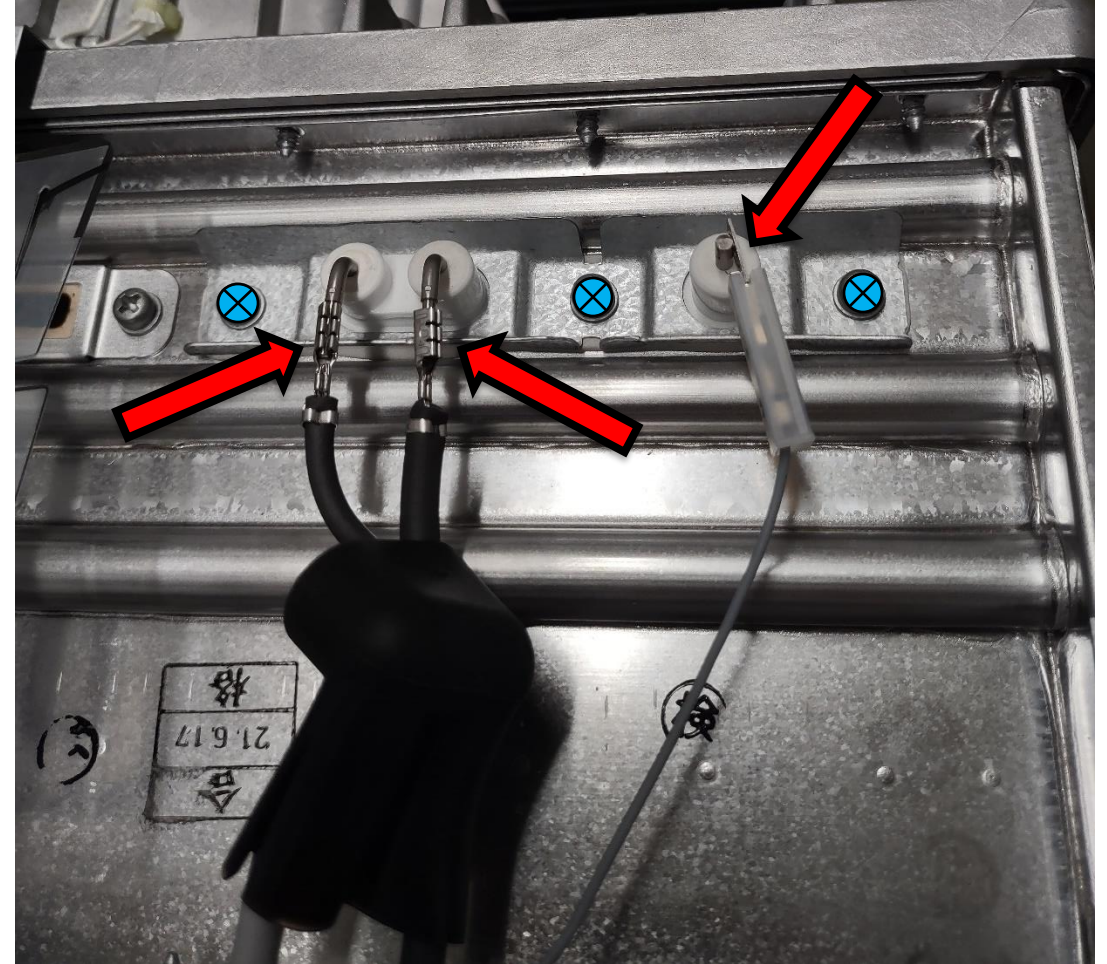
Ignitor and Flame Rod

Pull back the black rubber insulator

Disconnect the 2 leads on the Ignitor
and the 1 on the Flame Rod

Remove the 3 screws holding the retaining plate in place

Pull the Ignitor and Flame Rod assembly out of the burner



Reinstall Ignitor and Flame Rod

Insert the Ignitor and Flame Rod assembly and secure with 3 screws

Always replace the gasket!

(one is provided inside the cabinet, bottom right wall)

Reconnect leads and replace the insulator

Close and secure the Overheat Film Wrap

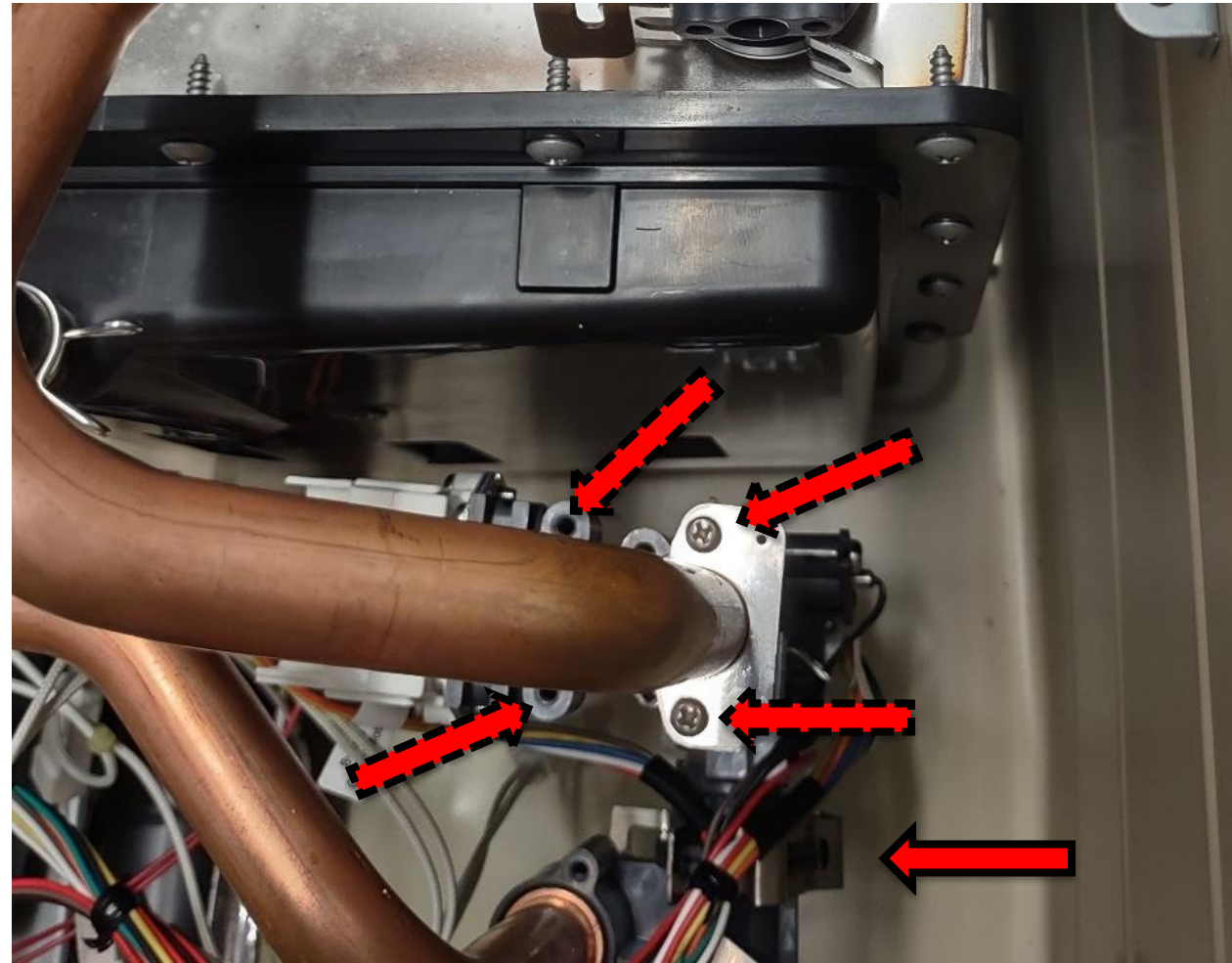


Water Control and Bypass Valve

Remove the 4 coarse-thread screws and retaining plates

Remove the clip from the bottom of the assembly

Pull the pipes away from the assembly and maneuver it up and out of the cabinet



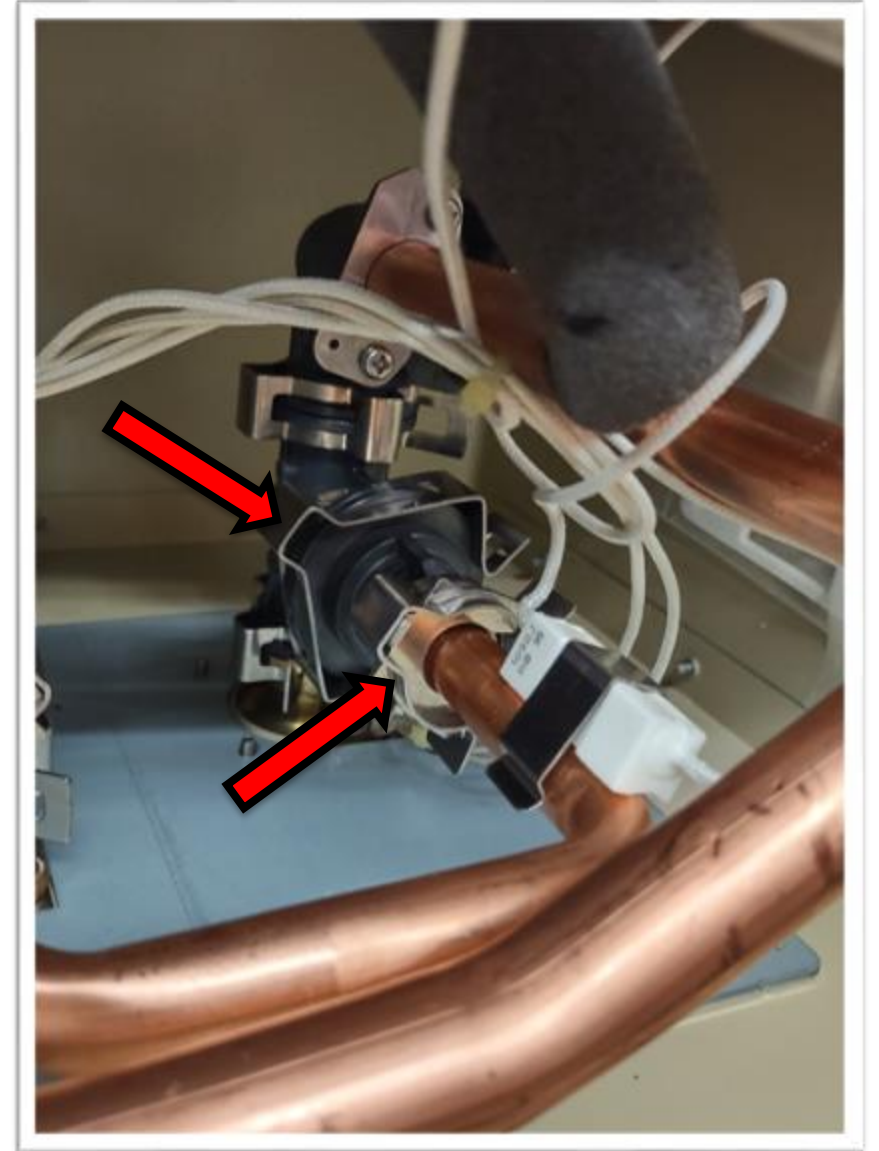
Check Valve

Remove the 2 clips that hold the Check Valve in place

Gently pull the water pipe towards you to remove

Don't lose the o-ring

Remove the Check Valve

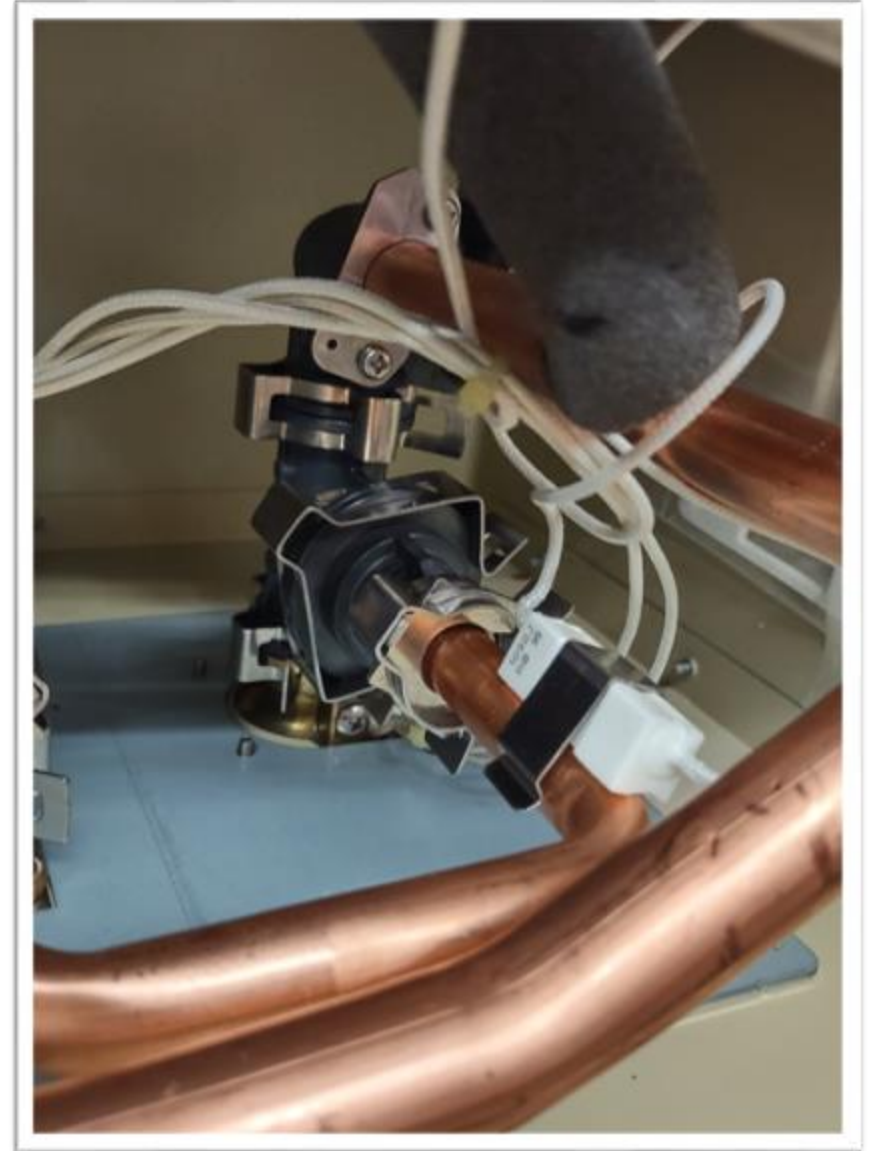


Reassembly (Right Side of Cabinet)

Reinstall the Check Valve

Reinstall both clips

Make sure o-ring is on the recirculation pipe before inserting

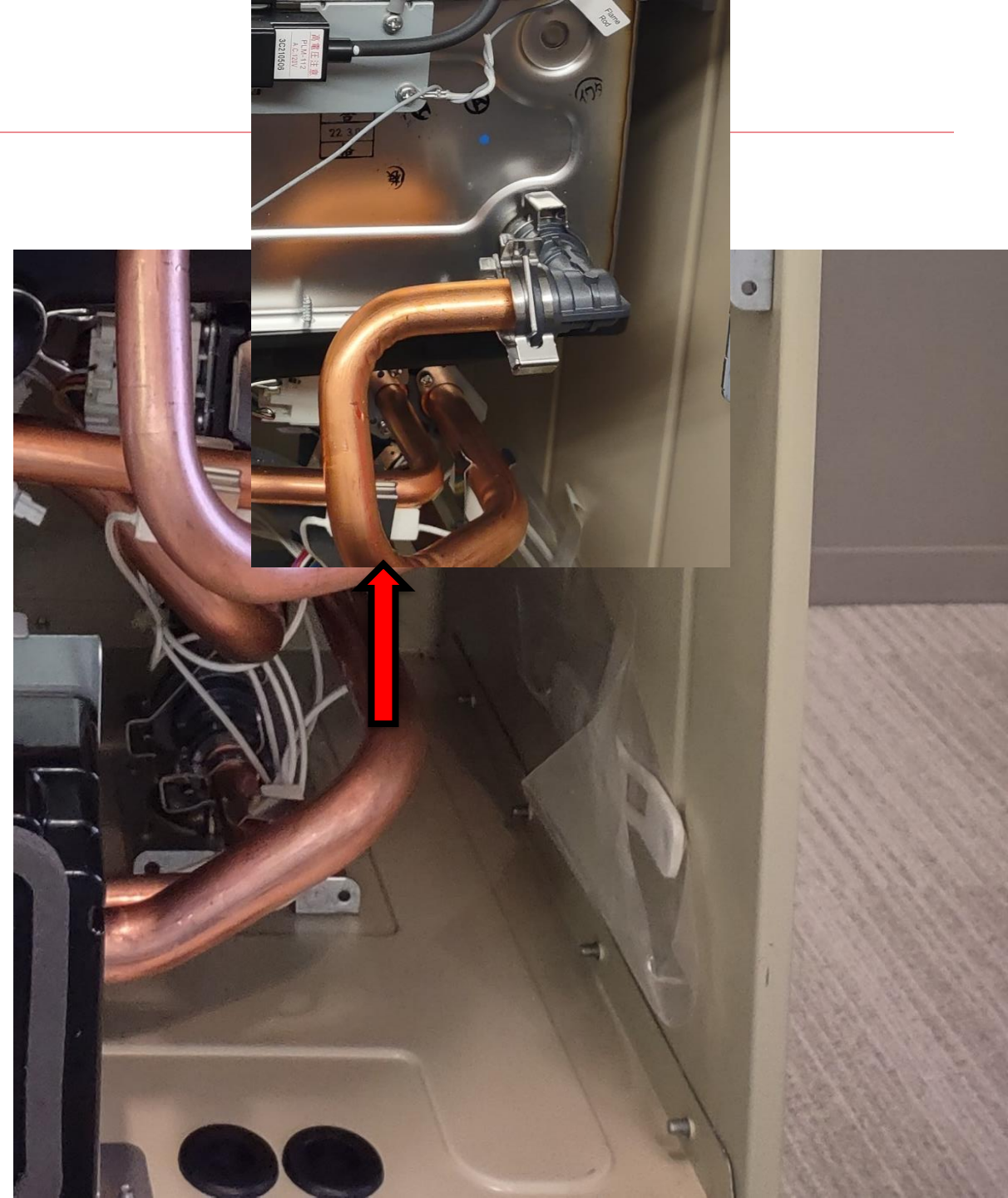


Reassembly (Right Side of Cabinet)

Reinstall the Water Control and Bypass Valves

Tip:

Disconnect the Heat Exchanger inlet pipe by removing the clip before connecting the other end to the Water Control Valve. Then reconnect the pipe and the clip.



Reassembly, User Interface

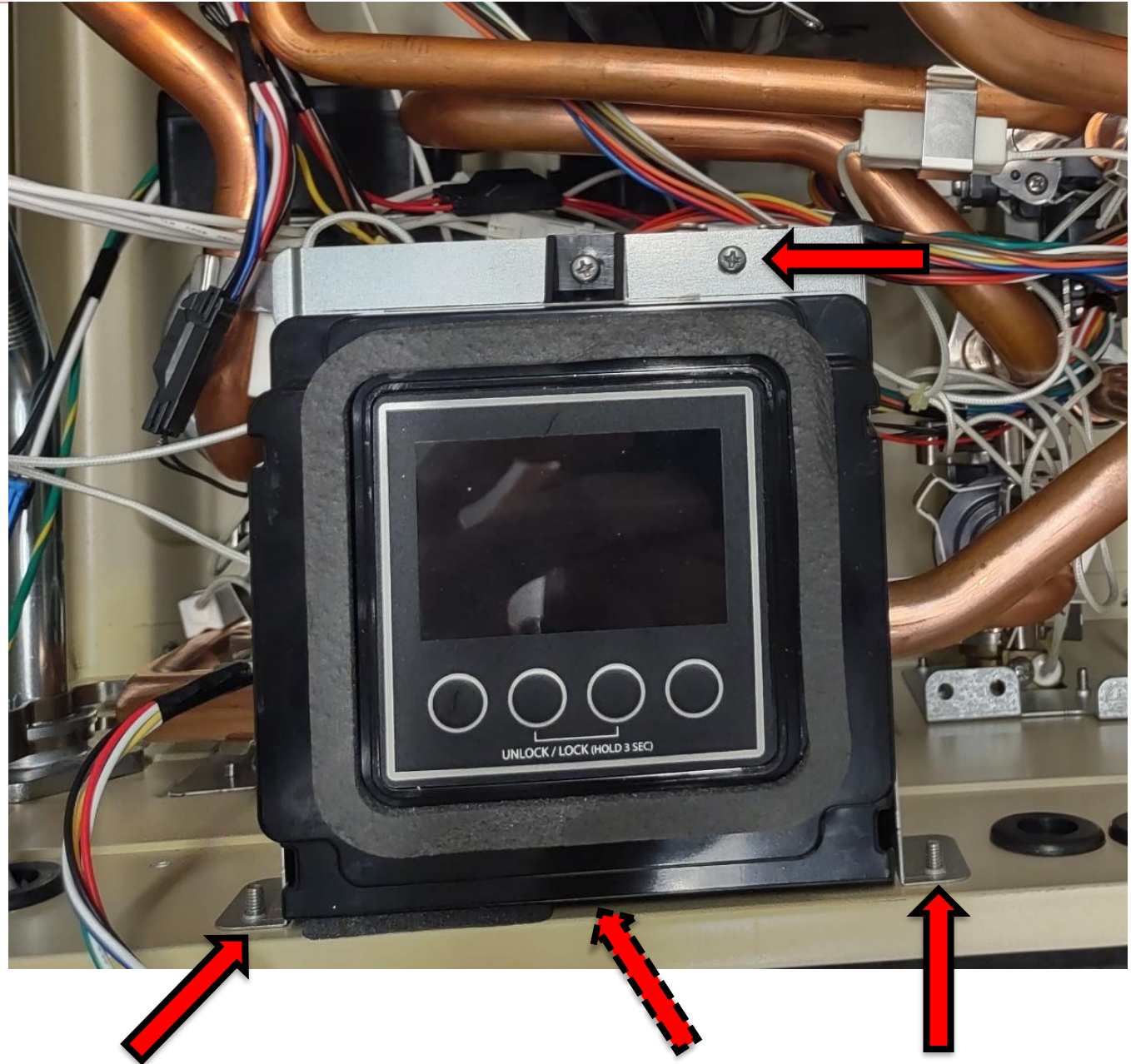
Insert Interface into its correct position

Make sure Wi-Fi receiver is stubbed
out of the bottom of the cabinet

Replace the 3 screws from the outside
bottom of the cabinet

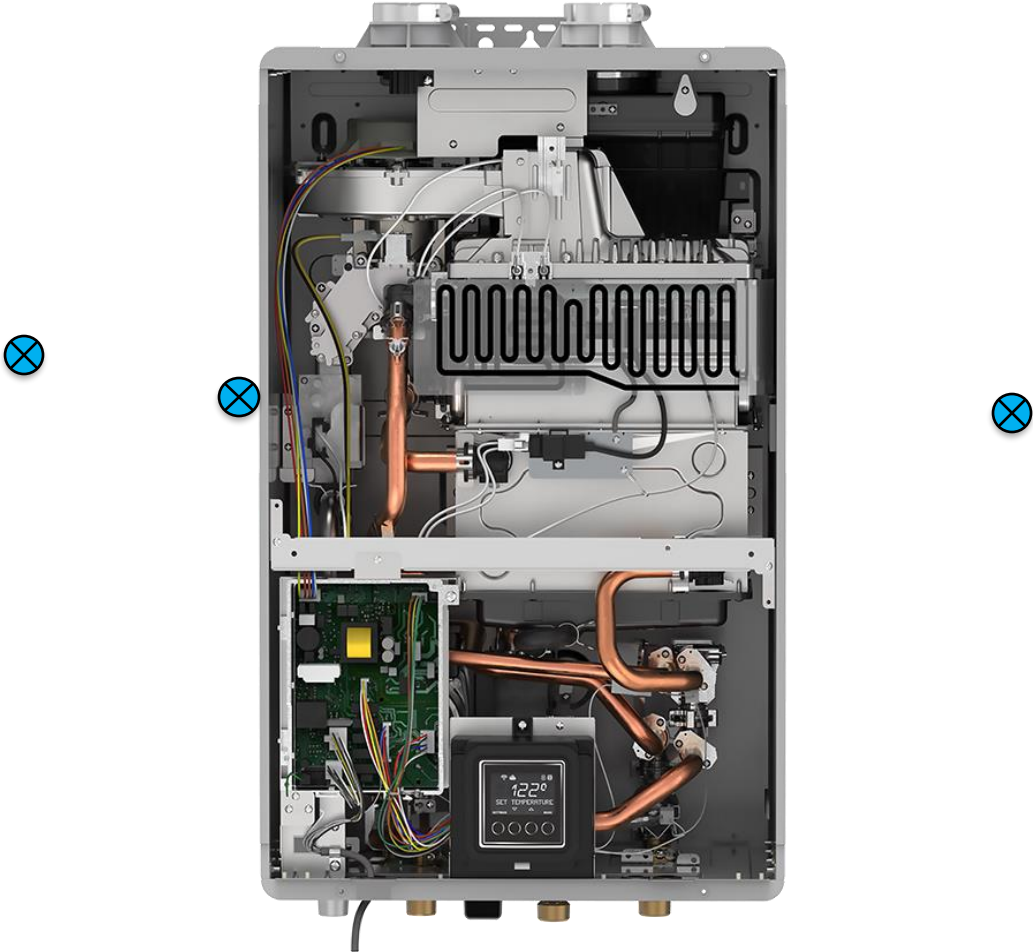
The coarse-thread screw goes
in the plastic housing

Replace the 1 bracket screw at the top

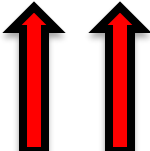


Reassembly, Control Board and Cross Bracket

2 screws for the Cross Bracket
1 screw for the Control Board

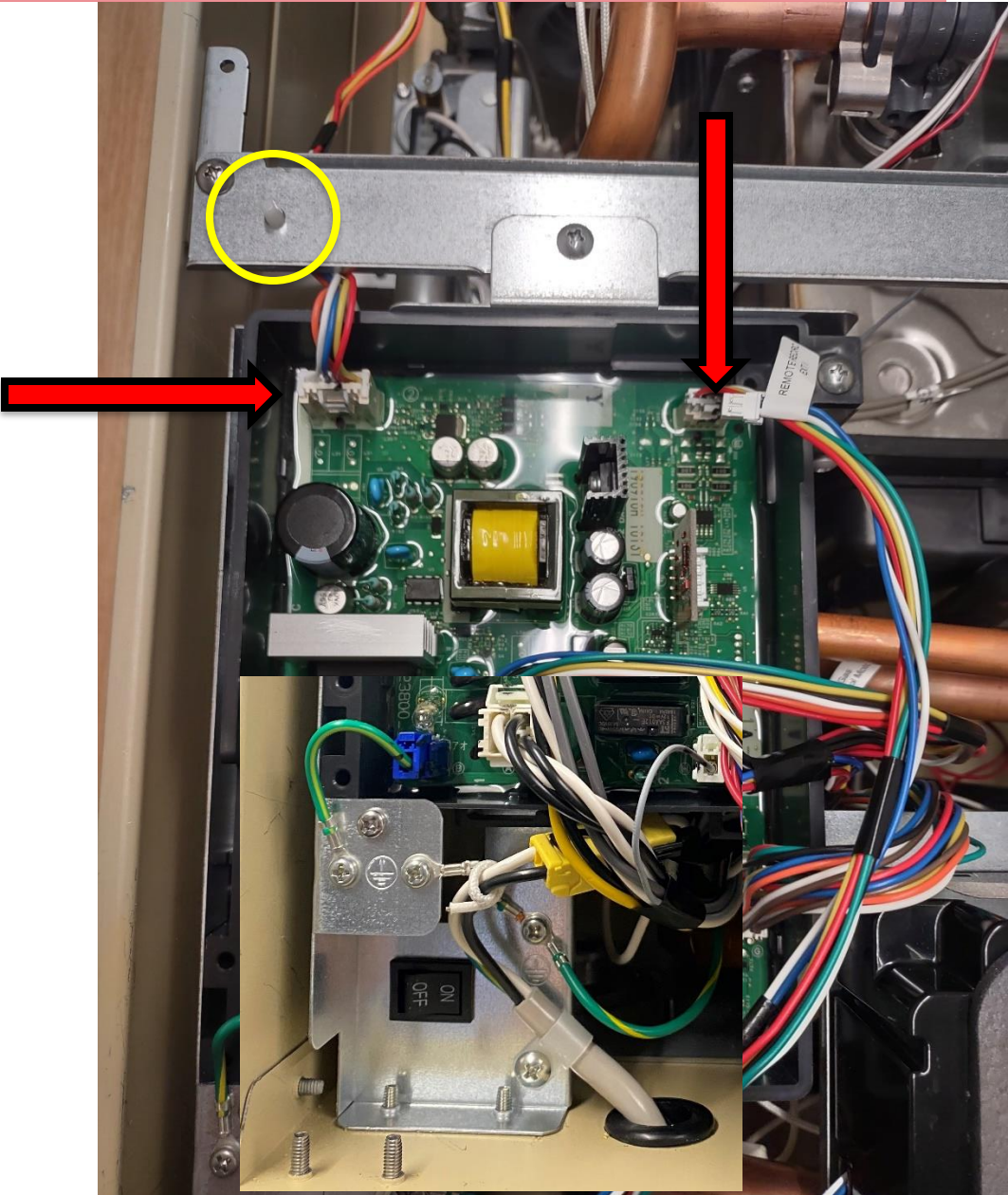


2 screws from the bottom



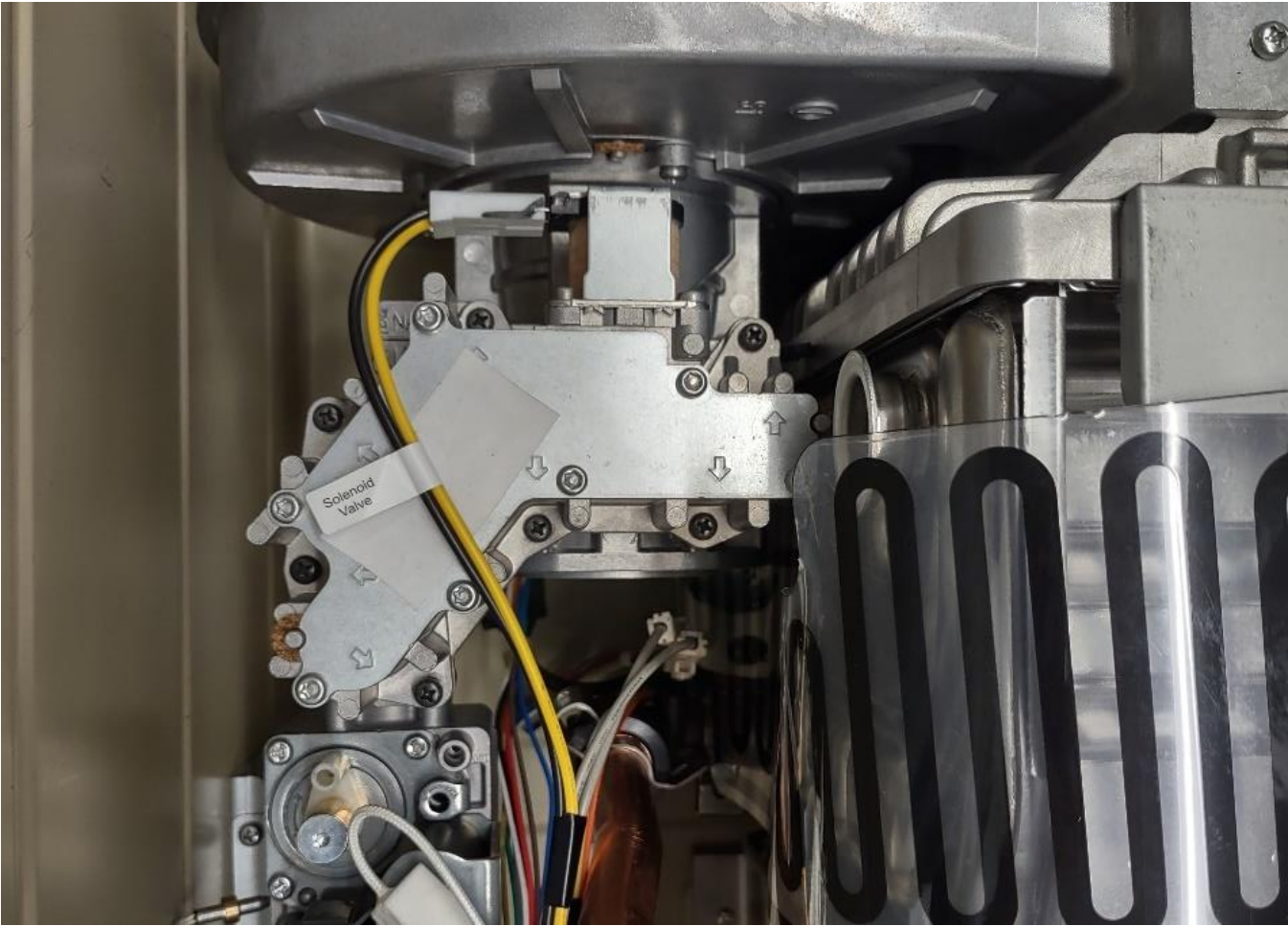
Control Board Connections

- Reattach User Interface connector
- Reattach Blower connector and reinsert retainer
- Reconnect ground screw to the control board from the recirculation pump



Checklist

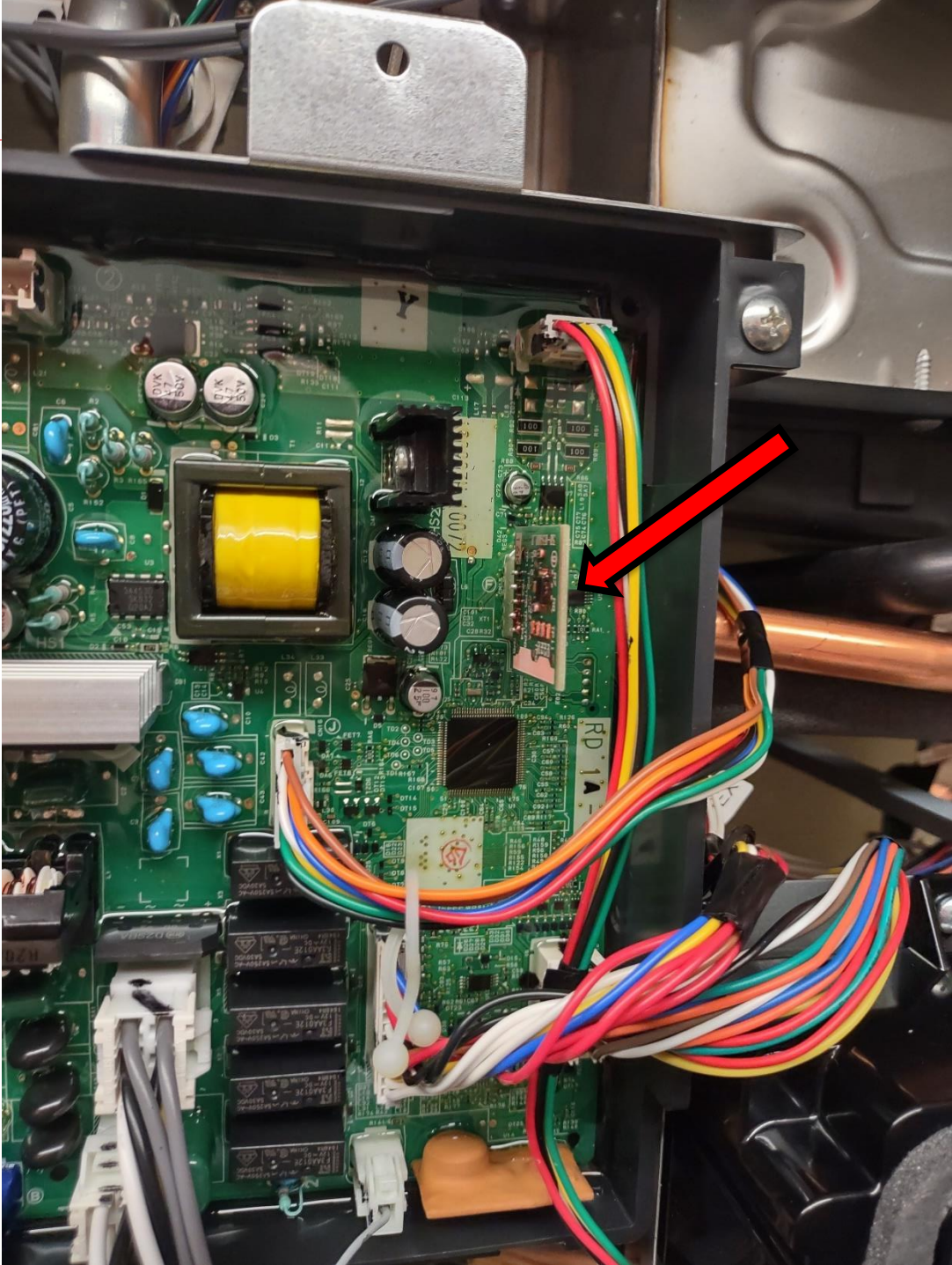
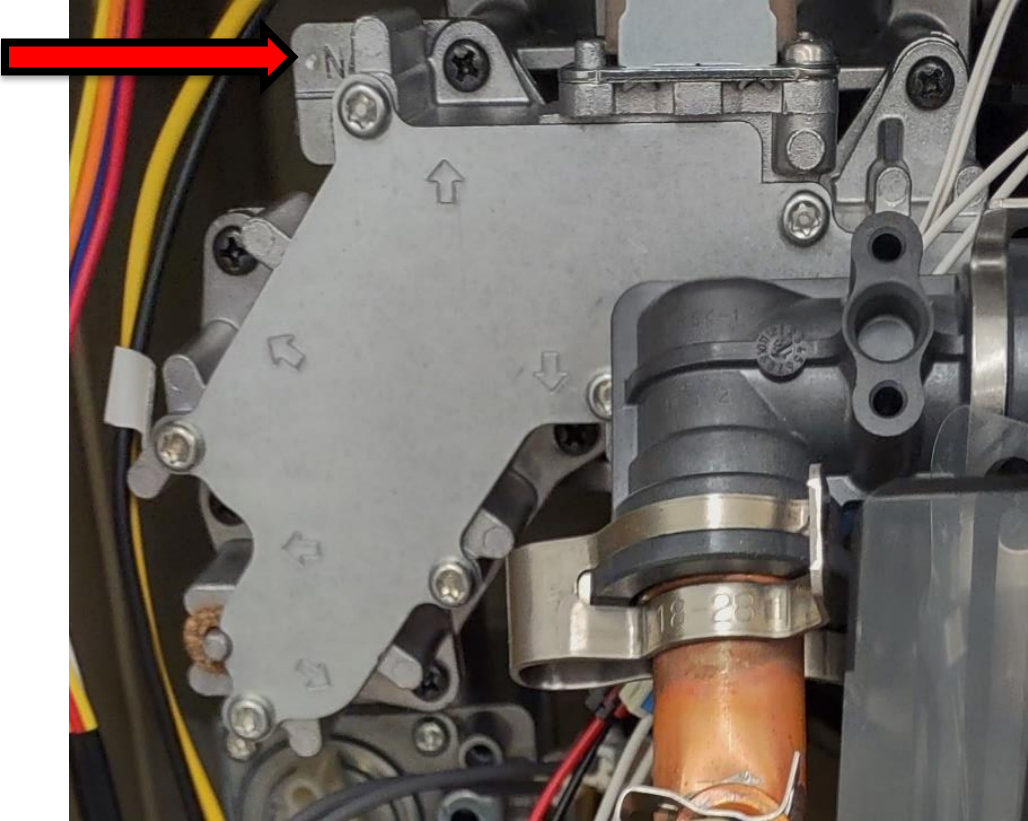
Did you reconnect the power to the Blower?



Checklist

Did you reconnect the power to the Blower?

Does the Manifold Plate (dimple) match the Gas Chip?

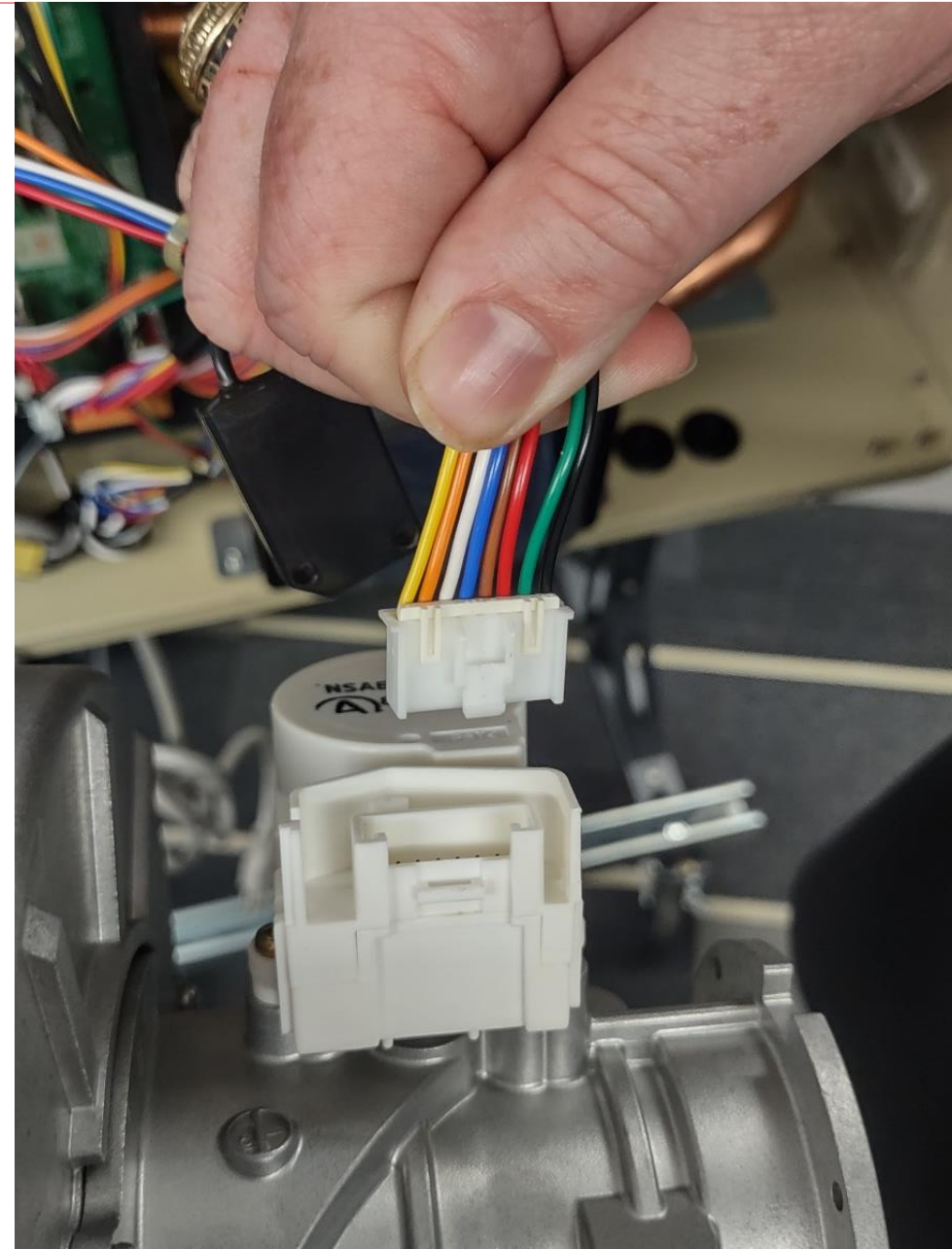


Checklist

Did you reconnect the power to the Blower?

Does the Manifold Plate (dimple) match the Gas Chip?

Did you reconnect the Venturi connector?



Checklist

Did you reconnect the power to the Blower?

Does the Manifold Plate (dimple) match the Gas Chip?

Did you reconnect the Venturi connector?

Did you reconnect the power to the Recirculation Pump?



SR Model

Checklist

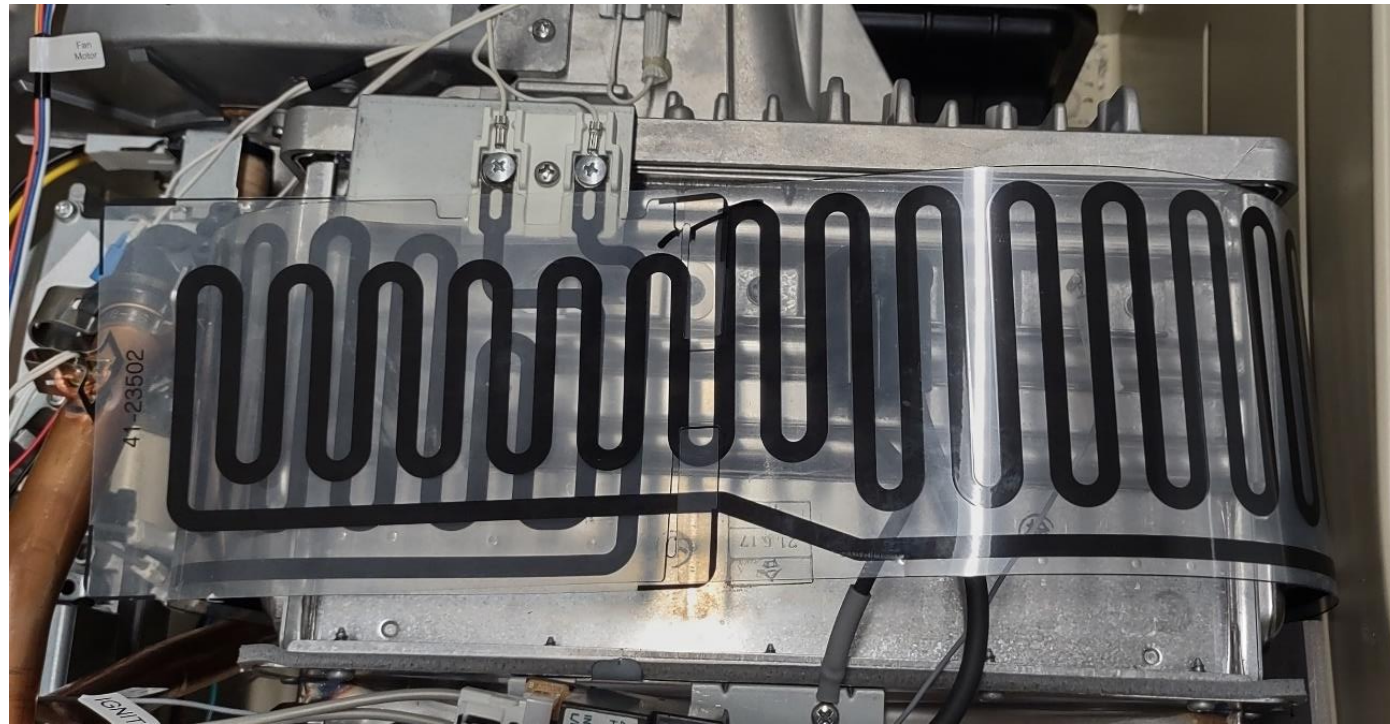
Did you reconnect the power to the Blower?

Does the Manifold Plate (dimple) match the Gas Chip?

Did you reconnect the Venturi connector?

Did you reconnect the power to the Recirculation Pump?

Is the Overheat Film Wrap properly secured?



Checklist

Did you reconnect the power to the Blower?

Does the Manifold Plate (dimple) match the Gas Chip?

Did you reconnect the Venturi connector?

Did you reconnect the power to the Recirculation Pump?

Is the Overheat Film Wrap properly secured?

Are the leads protected from arcing?



Checklist

Did you reconnect the power to the Blower?

Does the Manifold Plate (dimple) match the Gas Chip?

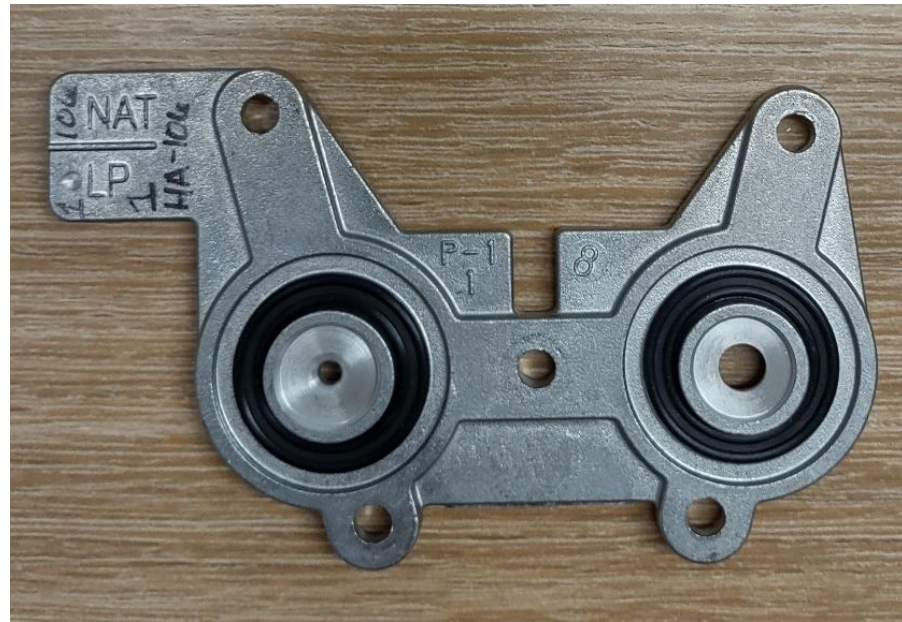
Did you reconnect the Venturi connector?

Did you reconnect the power to the Recirculation Pump?

Is the Overheat Film Wrap properly secured?

Are the leads protected from grounding?

Are all o-rings and gaskets in place?



Replace the Cover

Reinstall the cover,
replace the 4 screws
and install the plastic screw covers.





The new degree of comfort.®

Questions?

HEATING



COOLING



WATER HEATING



The new degree of comfort.®

Thank You!

HEATING



COOLING



WATER HEATING