



Metal-Fab B-vent

Experience The Difference Ex

- **Headquarters in Wichita, Kansas**

- **Manufacturing Facilities – 330,000 sq. ft.**

- **Regional Warehouses, Strategically Located.**

Metal-Fab Mission Statement Sums It Up...

**TEAMWORK.
COMMITMENT.
QUALITY.
EXCELLENCE...**

**in everything we do...
to everyone we serve.**

Benefit: SAFETY AT THE INSTALLATION



Feature: Hemmed casing and flue

Benefit: IF BENT INTO OVAL, CAN STILL BE USED



Feature: Construction of casing and flue

**Benefit: CAN BE UNLOCKED
WITHOUT TOOLS OR DAMAGE**



**Feature: Positive twist lock with stop,
a Metal-Fab original**

Benefit: OPTIONAL LOCKING TAB



**Feature: Mechanical Lock –
push in and pull out with tool**

Benefit: EASILY ADJUSTABLE WYES AND TEES



Feature: 360° rotating collar at male end

Benefit: EASILY ADJUSTABLE 90° ELBOWS



Feature: 360 ° ROTATING COLLAR, 5-PIECE DESIGN
ONLY ONE ON THE MARKET

Benefit: EASILY ADJUSTABLE 45°/60° ELBOWS



**Feature: 360° rotating collar, 4-piece design –
saves cost of 90° elbow**

**Benefit: HOUSING ADAPTERS INSTALL WITHOUT
DAMAGING PLASTIC MOTOR HOUSINGS**



Feature: Slip-on drafthood connectors

**Benefit: SUPERIOR UPDRAFT AND RESISTANCE
TO DOWNDRAFTS**



Feature: High performance cap design

Benefit: **REDUCED SPACE REQUIREMENT** **FOR INCREASERS**



Feature: Zero-height design

Benefit: **CONNECT EASILY** TO OTHER POPULAR BRANDS



Feature: UL listed to mate with other specifically identified gas vent brands

Benefit: QUICK CONNECTION TO COMMON VENT



Feature: Easy-bending single wall flex connectors

CATEGORIES OF APPLIANCES

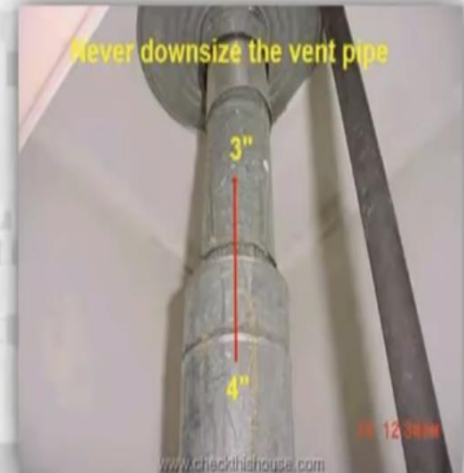
- CATEGORY I: ZERO OR NEGATIVE PRESSURE
OVER 140 DEGREES OVER DEWPOINT
- CATEGORY II: ZERO OR NEGATIVE PRESSURE
LESS THAN 140 DEGREES OVER DEWPOINT
- CATEGORY III: POSITIVE PRESSURE
OVER 140 DEGREES OVER DEWPOINT
- CATEGORY IV: POSITIVE PRESSURE
LESS THAN 140 DEGREES OVER DEWPOINT

CATEGORIES OF APPLIANCES

Here Is The Same Information In A Table Format

Appliance Vent Categories		
	Negative pressure venting	Positive pressure venting
Non-Condensing	<p>Category I Combustion Efficiency 83% or less Use standard venting Masonry or Type B Vent</p>	<p>Category III Combustion Efficiency 83% or less Use only pressurizable vent as specified by manufacturer</p>
Condensing	<p>Category II Combustion Efficiency Over 83% Use only special condensing service vent as specified by manufacturer</p>	<p>Category IV Combustion Efficiency Over 87% Use only pressurizable special condensing service vent as specified by manufacturer</p>

House Water Heater Venting



However, if the gas water heater draft hood is larger, designed for a 4" pipe – **Do Not Downsize It! / DO NOT install any reducing connectors, adapters from a 4" draft hood to a 3" water heater vent pipe** just to accommodate your old venting system.

House Water Heater Venting

Mismatched draft hood and vent pipe diameter?

If the draft hood that came with your water heater has a top opening diameter designed for a 3" vent pipe, and you have a 4" vent pipe installed, use an adapter / increaser to join both of them together.



House Water Heater Venting

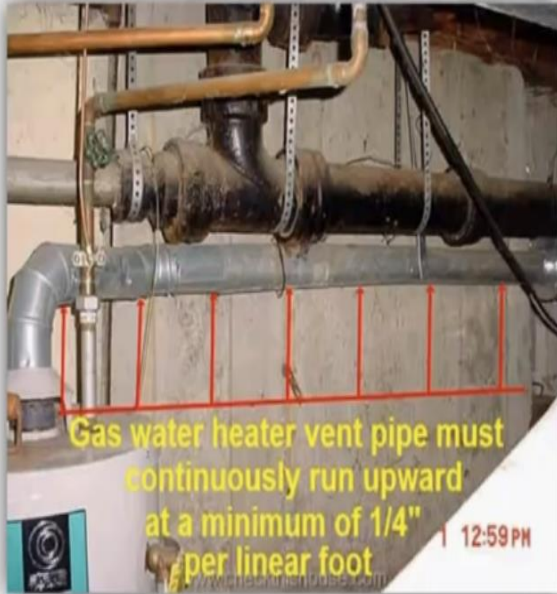


Poor drafting and chimney conditions are usually responsible for corrosion.



Monitor gas water heater vent pipes periodically. Look for corrosion and surface deterioration.

House Water Heater Venting



Gas water heater vent pipe must continuously run upward towards the chimney entrance!



To provide proper draft the pipe should be rising at least 1/4" per linear foot, no dips, no sags, support along the entire run.

Thank You