

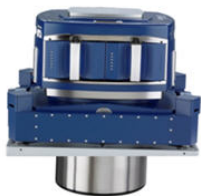
# Product Update: MAPPS Winter Conference 2020

Honolulu, Hawaii



Kevin Perkins, Exec. Acct. Mgr.  
Applanix Corporation – A Trimble Company

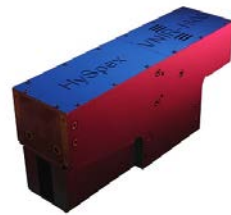
# What's new for Manned Aircraft Applications?



*Photogrammetry*



*LiDAR*



*Hyperspectral*



*SAR*

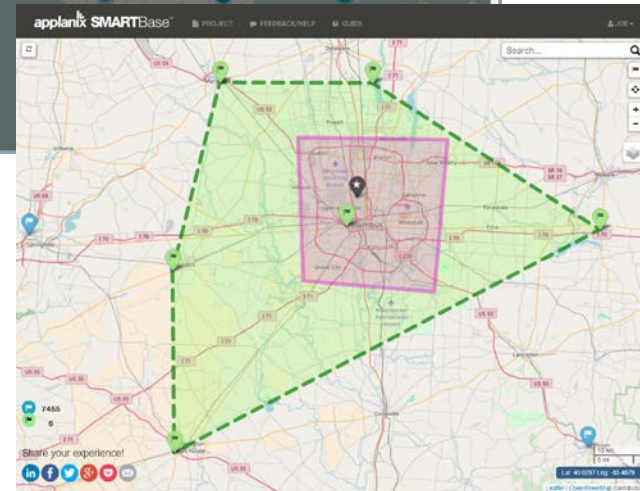
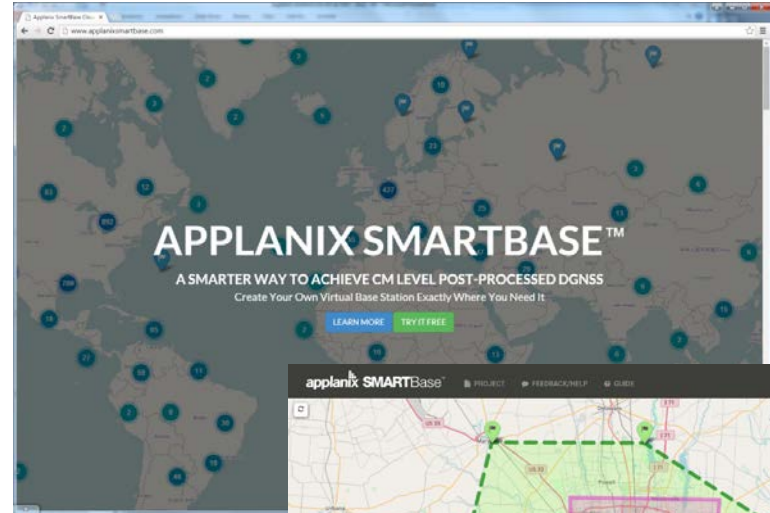


*Thermal*

# Applanix SmartBase Cloud

- Cloud version of Applanix SmartBase
  - Generates a set of observations for a virtual base station exactly where and when you need it, and emails it to your inbox ready for Differential GNSS processing

<http://www.applanixsmartbase.com/>



# Post-processed CenterPoint RTX

- Survey grade accuracy *without base stations*
- Global, cloud based service available as a subscription over internet
- *Available within minutes after mission*
- *Accuracy: < 4 cm RMS Horizontal, < 6 cm RMS Vertical*

POS Pac<sup>TM</sup> MMS 8

CenterPoint<sup>®</sup> | Post  
RTX | Processing

# Airborne Test Results

- 100 Airborne data set, 220 hours
  - Various countries, varying altitude (0.16 - 8.7km), fixed wing, helicopter
  - Reference: Applanix Smartbase<sup>TM</sup> SBET solution

Position components	RMS (m)	Sigma (m)	68% (m)	95% (m)	99% (m)	99.9% (m)
North (m)	<b>0.021</b>	0.021	0.014	<b>0.034</b>	0.066	0.135
East (m)	<b>0.020</b>	0.020	0.012	<b>0.032</b>	0.066	0.155
Down (m)	<b>0.056</b>	0.050	0.052	<b>0.110</b>	0.156	0.245

# What's new in UAV Applications?

## POSPac LiDAR QC Tools

- UAV LiDAR boresight calibration
- UAV LiDAR trajectory adjustment
- LAS point cloud generator





# UAV: *POSPac Cloud*

- On-line version of POSPac MMS™
- Available as an Application Program Interface (API) for Original Equipment Manufacturers (OEMs) to allow seamless integration of high accuracy direct georeferencing
- Enables subscription based licensing and pricing



# Thank you for your attention

*For more information, visit our web site:*

[www.applanix.com](http://www.applanix.com)