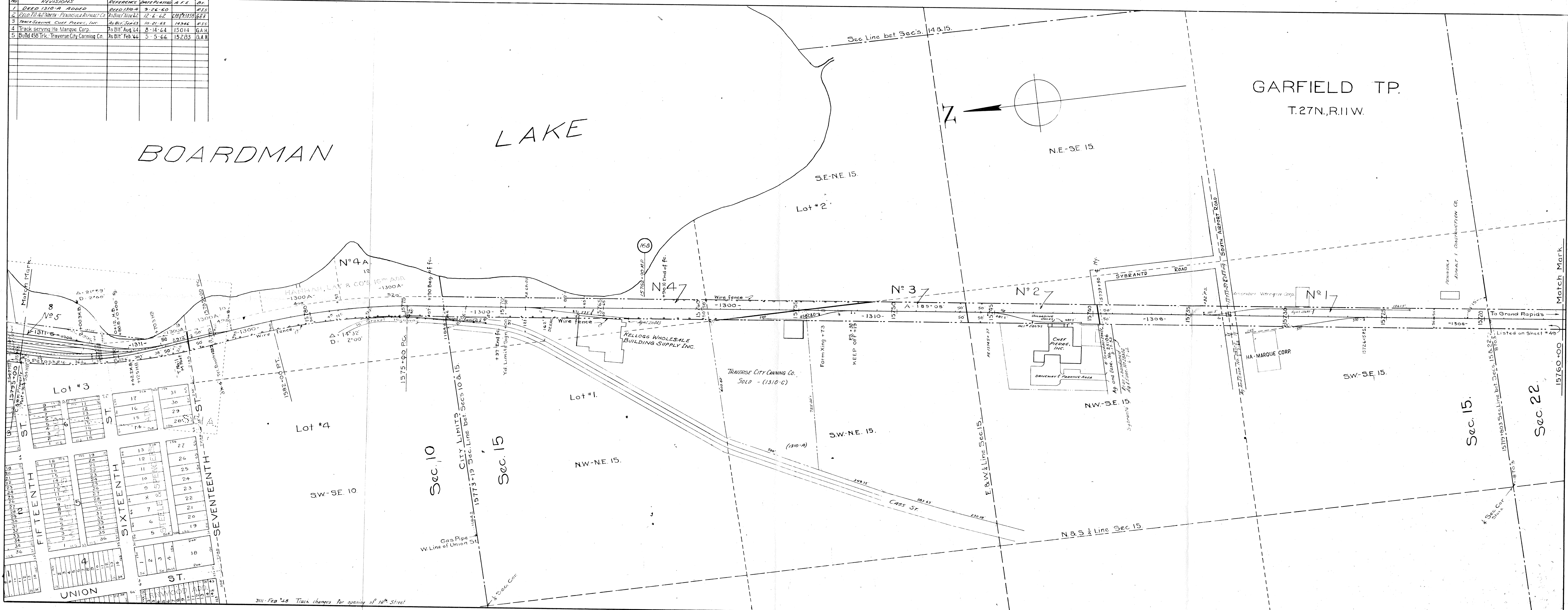
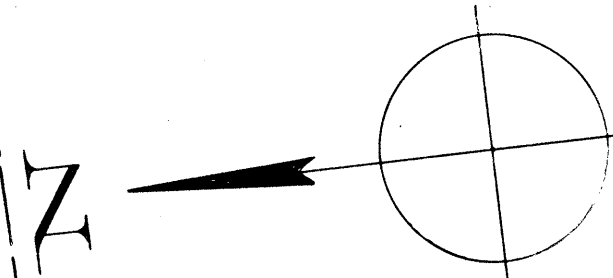


No.	REVISIONS	REFERENCE	DATE/PLAT	A.F.E.	D.V.
1	DEED 1310-A ADDED	DEED 1310-A	9-26-60		R.S.S.
2	DEED TO NORTH PENINSULA ASPHALT CO.	AS BUILT NO. 62	12-6-62	188781058	G.A.H.
3	TRUCK SERVING HA-MARQUE, INC.	As Bilt. 3/26/63	10-21-63	14346	R.S.S.
4	Track serving Ha-Marque Corp.	As Bilt. Aug. 64	8-14-64	15014	G.A.H.
5	Build 450 Trk. Traverse City Canning Co.	As Bilt. Feb. 66	5-5-66	15283	G.A.H.

BOARDMAN

LAKE

GARFIELD TP.
T.27N.,R.11W.



3111 Feb 68 Track changes for opening of 16th Street

3111 Apr 55 Build TPA 433-S To Serve Amer. Nit. Corp.
3111 Mar 57 " " " 533 " " Traverse City Lbr. Co.
3111 May 57 " " " 406 " " Peninsula Asphalt & Co.

CORRECTED SEPT. 1936

Val. Sec. 3 Kl.
Sheet No. 50.

24