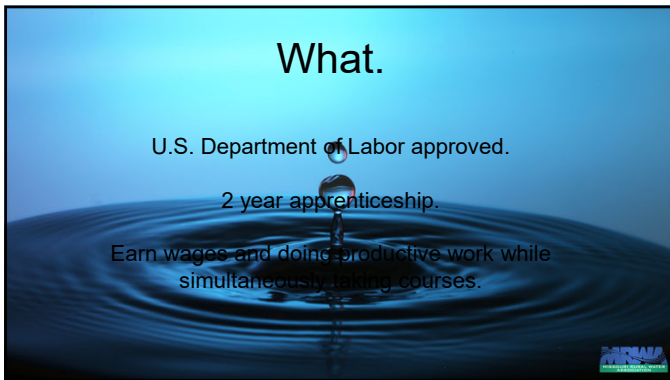




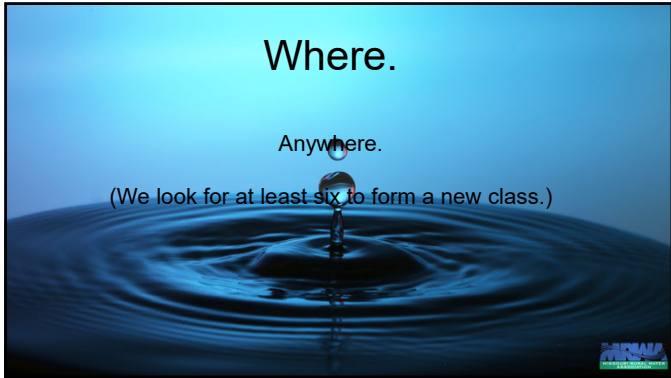
1



2



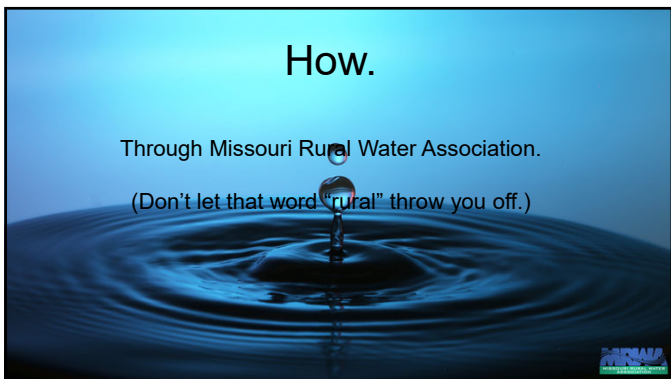
3



4



5



6

Advantages - Apprentice

A pathway to a solid career in water or wastewater.

Training that pays wages.

Wages that increase as new skills are mastered.

Alternative to an expensive college degree.



7

Advantages - Employer

Cultivate a well-trained talented workforce from day one.

Diversify the workforce by bringing new talent.

Train workers using best equipment, protocols, and procedures.



8

Advantages - Employer

Increase in performance and a decrease in error and accident rates.

Added sense of loyalty.

Improve employee retention and advancement.



9

Advantages - Employer

Help fill challenging vacancies.

Maintain institutional knowledge when your old school mentors the new workers.

Access employment support through Veteran's Administration and Economic Development, Job Service, etc.



10

Missouri Rural Water Association

Jim Enterline
Apprenticeship Coordinator
jenterline@mo-ruralwater.org
573.996.6096 mobile

573.677.5535 MRWA Office
www.mo-ruralwater.org



11
