

Mississippi

Forestry Economic Impact



5.18% of all jobs in Mississippi are supported by forestry or forestry-related industries.



Forestry and forest products are a **\$19.09 billion** industry in Mississippi.

Forestry & forestry-related employment supports over **84,000** total jobs in Mississippi.



\$4.42 billion in wages are paid out each year for forestry & forestry-related jobs in Mississippi.



The value of timber harvesting in Mississippi has averaged in excess of **\$1.4 billion** per year over the past 20 years.



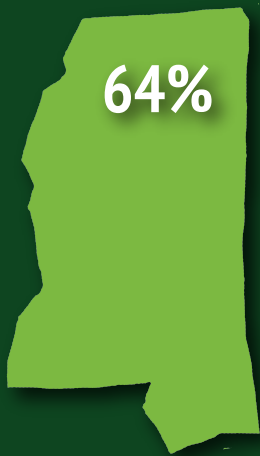
Mississippi was the first state to establish a reforestation tax credit. MFA & its partners worked with the state legislature to increase the tax credit's lifetime limit to **\$75,000.**

1.2026

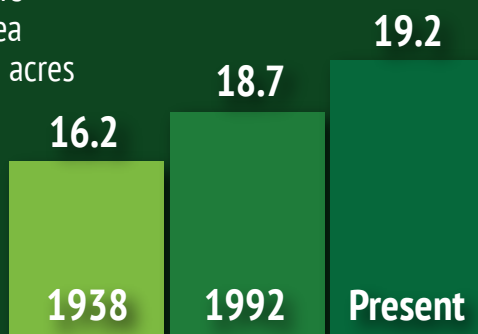


Mississippi Forestry Association
Advocacy • Education • Outreach

Mississippi Forest Facts



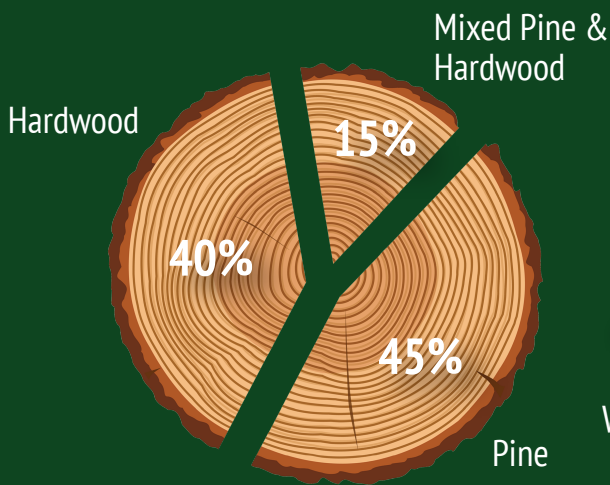
of Mississippi's total land area is in forested acres



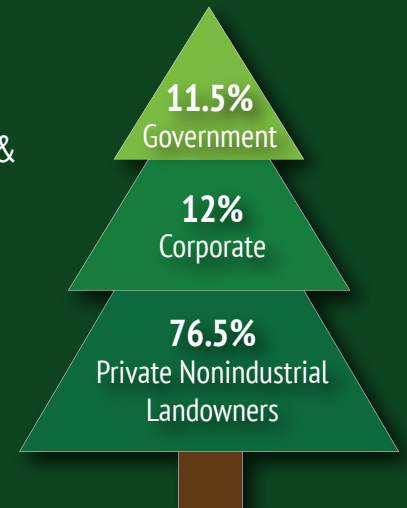
Millions of forested acres in Mississippi

Promoting sustainable forest management, reforestation after harvest, and keeping forests productive have strategic long-term benefits for Mississippi.

Mississippi forests provide recreational opportunities, encourage tourism, and create environmental benefits such as excellent water quality, cleaner air, improved wildlife habitat, and the storage of atmospheric carbon.



Forest by cover type



Who own's Mississippi's forests



Mississippi Forestry Association
Advocacy • Education • Outreach