

threadup

designs by Dawn Donnelly

“BIRDHOUSE I”



Dawn Donnelly
(586) 707-7028

threadup@hotmail.com

Permission granted to ANG to post this file for download on needlepoint.org.

“Birdhouse I”

Course Instructions

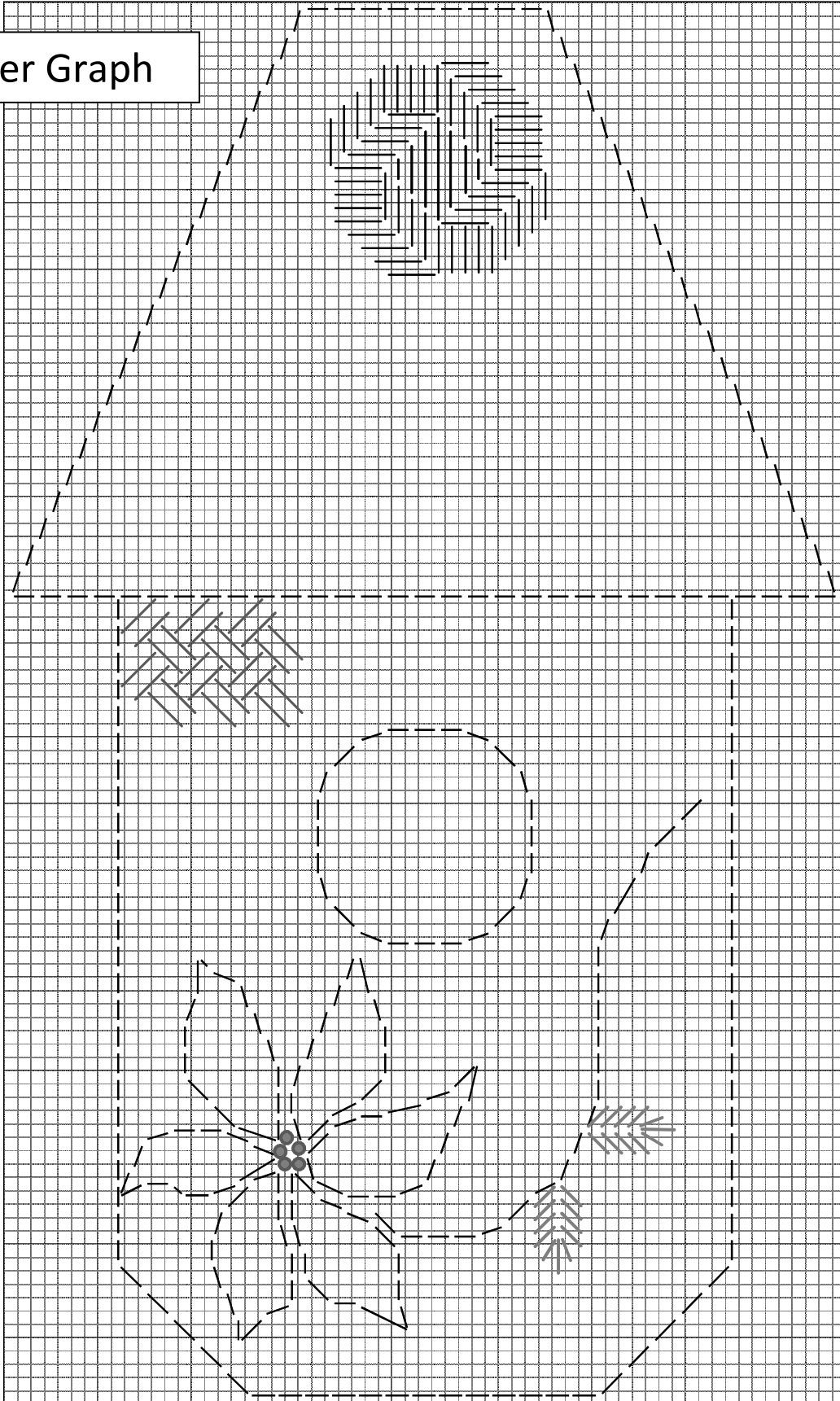
Materials

7" x 9" Congress, white
Overdyed Floss – 1084
Anchor Floss - 43, 45, 236, 302, 390, 683
Needle: 26
7" x 9" Stretcher bars
Laying tool
Tacks

Stitching Notes

1. Each line on a graph represents one thread of canvas.
2. The needle comes up on the odd numbers and down on the even numbers.
3. Cover the drawn lines on the canvas while you stitch, which will help maintain the shape of each area.

Master Graph

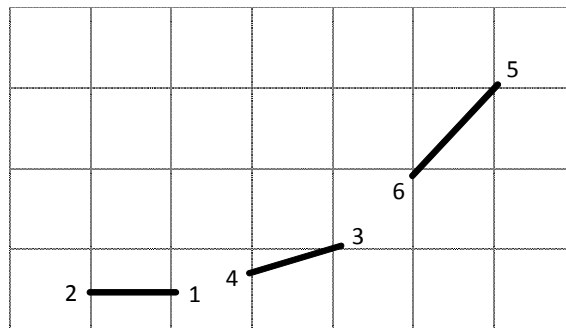


Outlines

Using 3 strands of Overdyed Floss – 1084, outline the roof using a Backstitch. Follow the MasterGraph on page 3.

Outline the bottom portion with a Backstitch using 3 strands of Anchor Floss – 390. Follow the Master Graph.

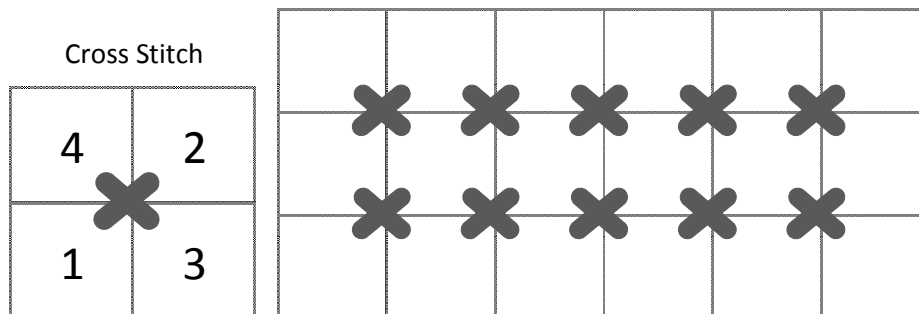
Backstitch



Hole

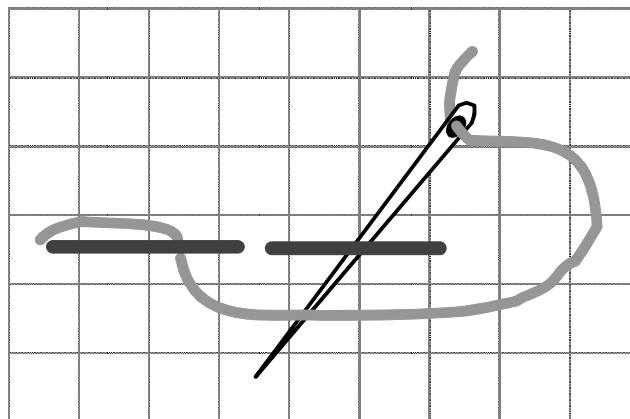
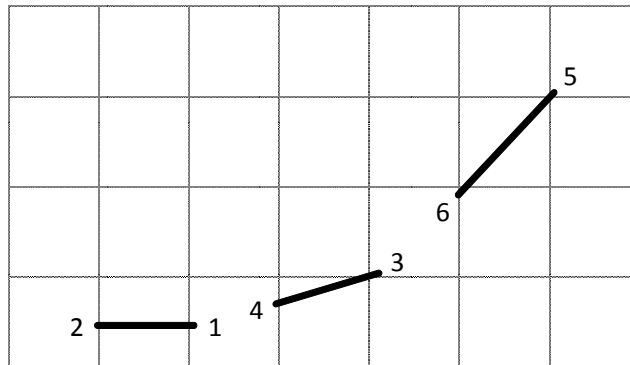
Anchor Floss - 236 (gray/black).

Work the outside edge of the hole in a Backstitch using 2 strands of Anchor Floss – 236. Fill the hole with Cross Stitches; use 3 strands of Anchor Floss – 236.

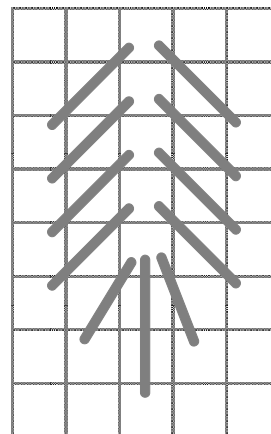
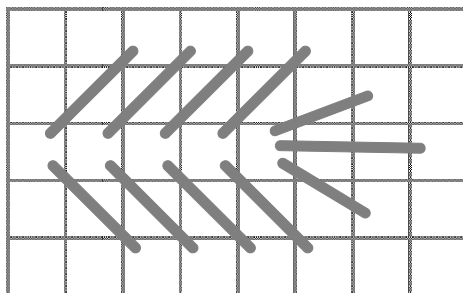


Poinsettia

Stem: Anchor Floss - 683 (green), 3 strands. Use a Backstitch and follow the Master Graph for placement. When done, overcast or whipstitch the Backstitches.

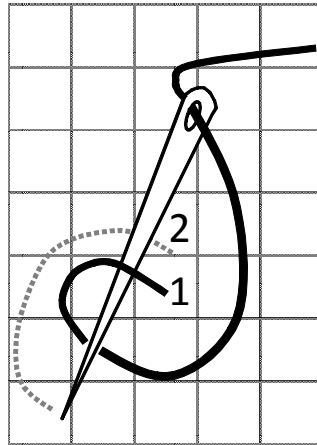


Leaves: Anchor Floss - 683 (green), 2 strands.



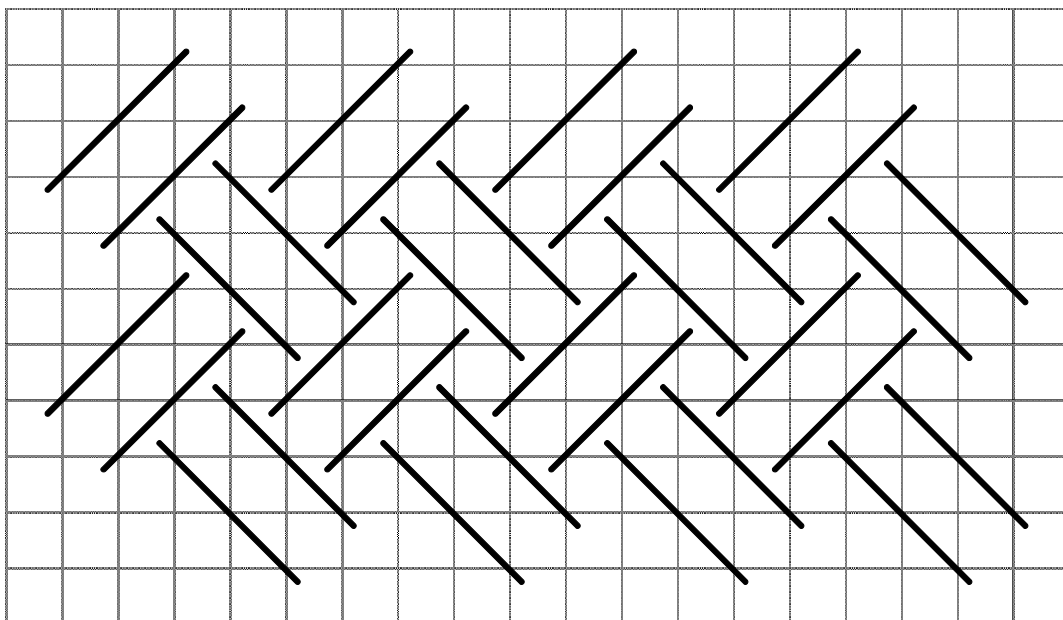
Petals: Anchor Floss - 43 and 45 (reds), 2 strands - one color of each in the needle. Work the outline of the petals in a Backstitch. Then overcast or whipstitch the backstitches. Fill the petals with random Long and Short stitches.

Flower center: Anchor Floss - 302 (yellow), 2 strands. Fill the center of the flower with about 13 French Knots.



Birdhouse Base

Anchor Floss - 390 (cream), 3 strands. Fill the area with Double Diagonal Weave.



Roof

Anchor Floss - 683 (green), 3 strands and Overdyed - 1084, 3 strands. Fill the roof with the Bargello pattern in the graph below.

