



# National Fenestration Rating Council Incorporated

**LICENSEE USER MANUAL FOR THE PRODUCT LINE EXPANSION  
USING IDENTICAL RATING VALUES [E0A0]**

NFRC Certified Products Database 2.0

---

**© 2013 NATIONAL FENESTRATION RATING COUNCIL, INC.**

**PREPARED BY:**

National Fenestration Rating Council  
6305 Ivy Lane, Suite 140  
Greenbelt, MD 20770  
Voice: (301) 589-1776  
Fax: (301) 589-3884  
Email: [info@nfr.org](mailto:info@nfr.org)  
Website: [www.nfr.org](http://www.nfr.org)



## ***FOREWORD***

This NFRC Licensee IRV User Manual provides guidelines to work within the NFRC online Certified Products Database (CPD 2.0) regarding the Identical Rating Value expansion process.

Questions on the use of this procedure should be addressed to:

---

<p>National Fenestration Rating Council 6305 Ivy Lane, Suite 140 Greenbelt, MD 20770 Voice: (301) 589-1776 Fax: (301) 589-3884 Email: <a href="mailto:info@nfr.org">info@nfr.org</a> Website: <a href="http://www.nfr.org">www.nfr.org</a></p>
--

---



## Table of Contents

<b>Foreword</b> .....	<b>2</b>
<b>Table of Contents</b> .....	<b>3</b>
<b>1. Introduction</b> .....	<b>4</b>
<b>2. Reviewing and Exporting Product Lines</b> .....	<b>4</b>
<b>3. Initial Certification and Recertification</b> .....	<b>6</b>
3.1 NEW PRODUCT LINES.....	6
3.2 RECERTIFYING PRODUCT LINES .....	6
<b>4. Updating Converted Product Lines</b> .....	<b>6</b>
4.1 REVISION REPORT TYPES.....	6
4.2 ADDENDUM REPORT TYPES .....	7

---

## 1. INTRODUCTION

---

This manual is to be used by NFRC Licensees to work within the NFRC Certified Products Directory 2.0 for a manufacturer's fenestration product line that is using the IRV expansion process. The process was established to offer manufacturers a simplification in the labeling process by allowing one CPD number to represent multiple options. This conversion is not available for Applied Film Products.

The licensee has the ability to review product lines prior to conversion and export the data for review.

---

## 2. REVIEWING AND EXPORTING PRODUCT LINES

---

Any product line can be converted to the Identical Rating Value (IRV) expansion process. The IRV allows multiple product options with identical energy performance ratings within the same grouped series to be represented by one CPD number.

**Manufacturers are not required to use this voluntary expansion process.** In some cases manufacturers who already have the capabilities to display the full CPD number on their temporary label may not need to use this process.

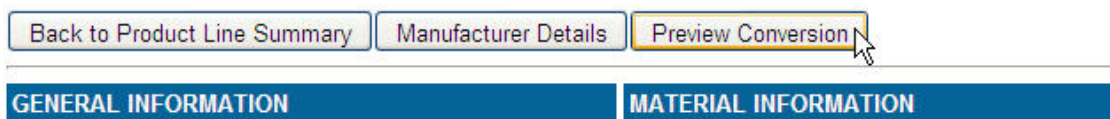
The following are policies regarding the IRV process:

1. The conversion shall only be performed by the Inspection Agency with the licensee's authorization.
2. A manufacturer can choose to convert any number of product lines. There is no requirement if one product line is converted that all product lines must be converted.
3. The product line cannot be converted from an IRV process back to a U-factor grouping expansion process, until recertification.

The following are the instructions to review and export a product line prior to converting to the IRV process.

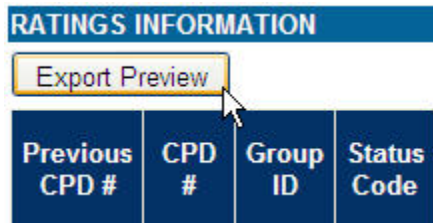
1. Select the product line from the Product Line Summary page
2. Click the Preview Conversion button in the header section. See Figure 2a.

*Figure 2a – Preview Conversion Button*



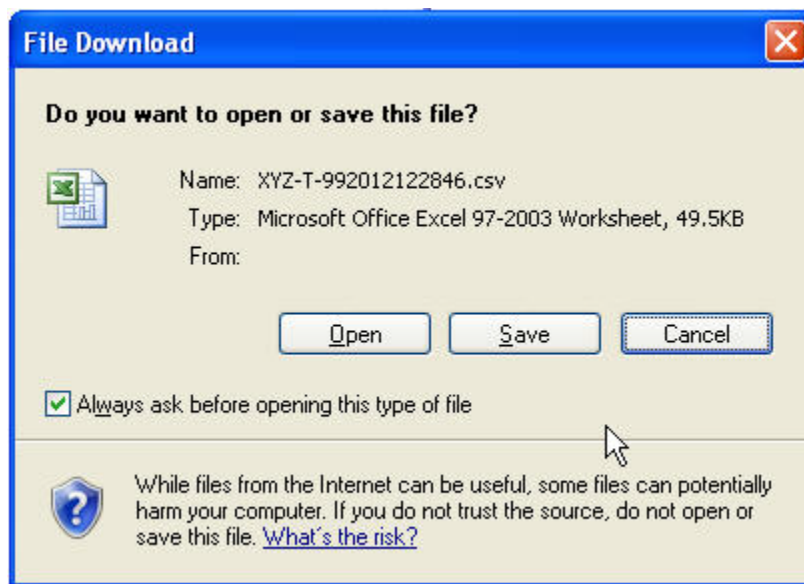
3. A new browser screen will open and display the converted product line with an IRV expansion.
4. To export the data for review, click the Export Preview button below the Ratings Information bar.

*Figure 2b – Export Button*



- a. Either open the file or save the file. See Figure 2c.

*Figure 2c – Saving Export Data*



- b. The exported data from the previewer tool **cannot** be used for labeling.
- c. When the IA converts a product line upon the manufacturer's authorization, and a Certification Authorization Report (CAR) has been delivered, the manufacturer will be able to export the authorized data via the normal process.
- d. Close or cancel the preview browser. The CPD does not save the information and the manufacturer will not be able to return to the same screen once closed. To preview conversion again, start with step 1 above.

---

## 3. INITIAL CERTIFICATION AND RECERTIFICATION

---

The following is general information about certifying or recertifying product lines to use the IRV process:

### 3.1 New Product Lines

A process is under development for new product lines to use the IRV expansion process when initially approved for certification. In the mean-time, if a participant requests that a new product line uses the IRV expansion process, the simulation laboratory provides uploads as currently performed.

The IA will be responsible to convert the product line after approving the product line's initial certification.

### 3.2 Recertifying Product Lines

The simulation laboratory will upload a spreadsheet using normal processes to recertify a product line. Until a new procedure is available to use the IRV expansion upon approval and certification by the IA, the simulation laboratory provides uploads as currently performed.

The IA will be responsible to convert the product line after approving the product line's re-certification.

---

## 4. UPDATING CONVERTED PRODUCT LINES

---

NFRC has provided simulation laboratories and Inspection Agencies with manuals to update product lines that have been converted to the IRV process.

The following is general information about the different tools:

### 4.1 Revision Report Types

A revision report type upload spreadsheet contains data that revises / replaces an individual option in a certified product line because the individual product(s) contain inaccurate or incomplete data.

The IA shall not accept a revision report type if the desired outcome is to add any options in the product line.

**NOTE:** NFRC recommends that the manufacturer works with both the IA and the simulation laboratory when a revision is required. There are instances when a revision will not be appropriate because of the amount of labels and products that have been manufactured. It may be necessary to use a simple

addendum report type and the IA will resolve any options the manufacturer wishes to discontinue.

## **4.2 Addendum Report Types**

An addendum upload contains new data that will be added to the currently certified products within a product line.

The only method available for product lines that utilize the IRV expansion process is the simple addendum report type which adds individual product options to the end of a product line.

A complex addendum is not available to add additional options at the end of a grouped series of certified individual products. There is a work around available; however, this requires the IA to archive the grouped options and the simulation lab to use a simple addendum to add the new grouped series. This unfortunately creates new CPD numbers for the series and any pre-printed labels are no longer applicable.