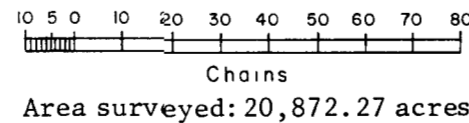
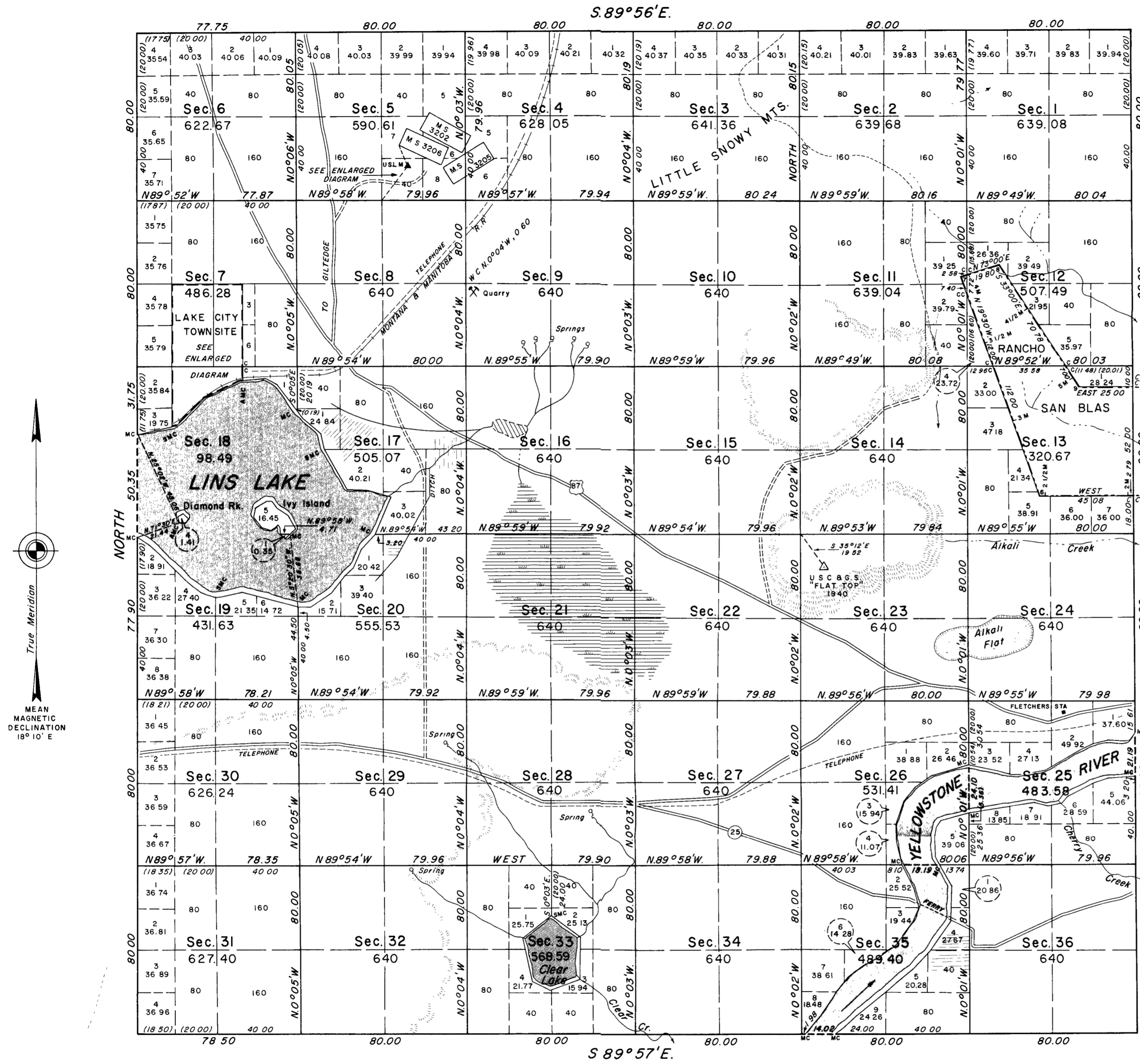


TOWNSHIP 15 NORTH, RANGE 20 EAST, OF THE PRINCIPAL MERIDIAN, MONTANA.

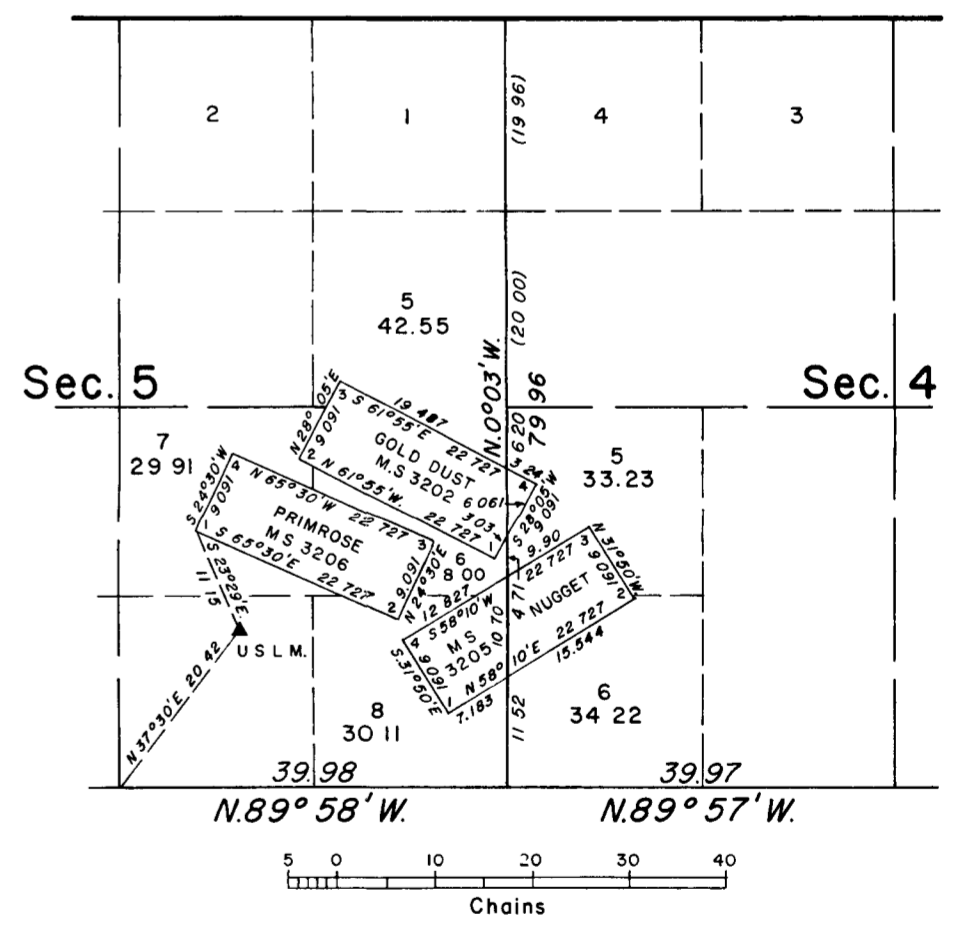
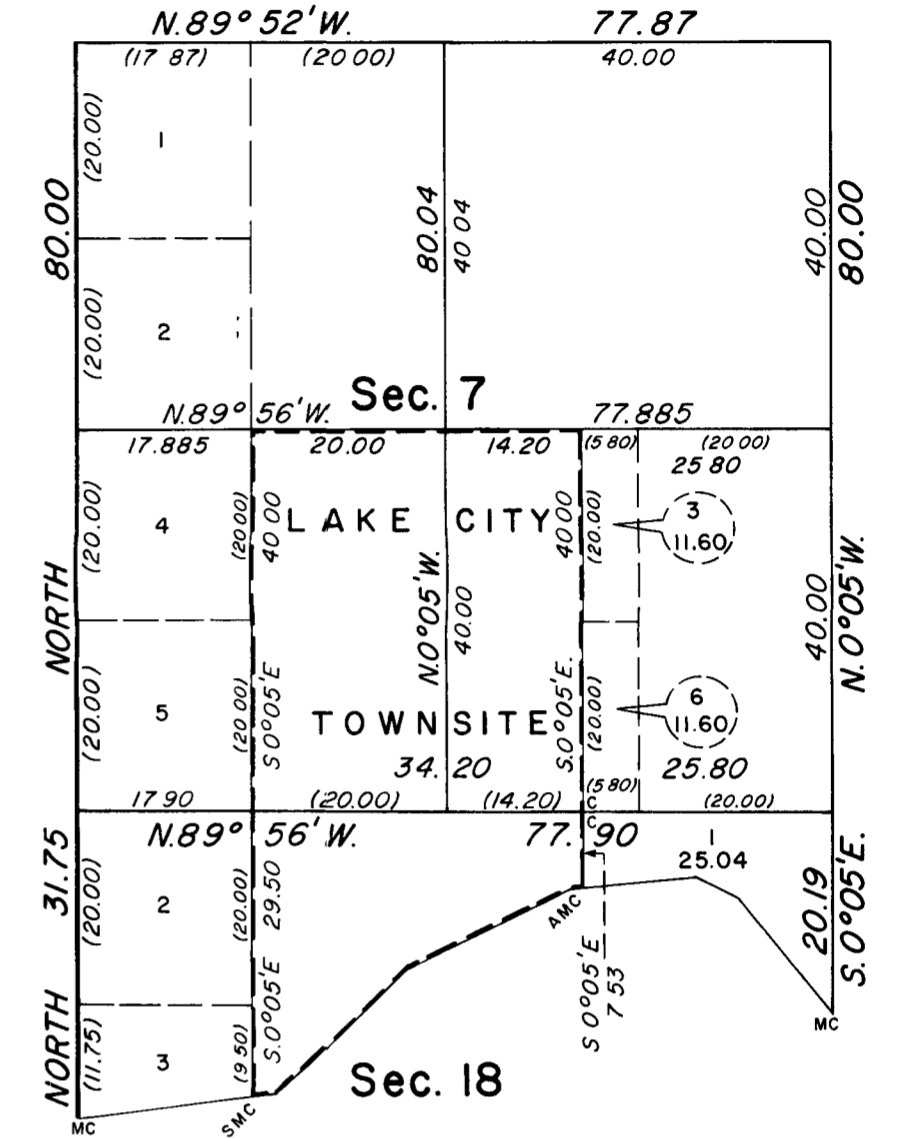


The south and east boundaries were surveyed by George H. Robinson, Deputy Surveyor, in 1902. The north and west boundaries were surveyed by Robert Acres, Cadastral Surveyor, in 1970.

The survey of the subdivisional and meander lines of T. 15 N., R. 20 E., Principal Meridian, Montana, was executed by Robert Acres, Cadastral Surveyor, beginning June 1, 1972 and completed June 30, 1972, under Special Instructions dated April 1, 1972 for Group No. 123, Montana.

The southern portion of the Little Snowy Mountains is covered with a moderately heavy stand of pine, oak, and fir timber.

ENLARGED DIAGRAMS



UNITED STATES DEPARTMENT OF THE INTERIOR
BUREAU OF LAND MANAGEMENT
Washington, D.C. September 20, 1972

This plat is strictly conformable to the approved field notes, and the survey, having been correctly executed in accordance with the requirements of law and the regulations of this Bureau, is hereby accepted.

For the Director

Chief, Division of Cadastral Survey