



ROGUE VALLEY *International* Medford Airport



NWAAAE Spotlight

The Rogue Valley International-Medford Airport (MFR) has a long and proud history of serving Southern Oregon and Northern California. Since 1929 MFR has operated as the gateway to everything this beautiful region has to offer. We are most known for Crater Lake National Park, the unmatched beauty of the Oregon Coast, world-renowned wines and artisan foods, thousands of miles of gorgeous hiking trails, world-class fishing, and, of course, the Oregon Shakespeare Festival. Our incredible region holds something for everyone to enjoy.

In 2019 MFR served 1,088,000 Passengers with the help of five airlines, serving nine non-stop destinations. 2020 was a trying year for the aviation transportation industry. Despite a 53% reduction in passenger traffic, MFR retained each of its destinations while gaining three more. To date, MFR now has 12 non-stop destinations on six airlines.

New Passenger Boarding Bridge—MFR has experienced record growth since 2013, and because of that, there have been several large-scale projects to enhance the airport. The largest project of the last 12 months was the addition of a second passenger boarding bridge. Construction on the new passenger loading bridge began mid-April. The project was completed in four phases, starting with the removal and repainting of aircraft pavement markings. Phase two the new foundation at Gate 4 for the original loading bridge to relocate from Gate 5 to Gate 4. Phase 3 was the removal of the existing loading bridge at Gate 5 and reinstallation at Gate 4. The final phase of the project was the assembly and installation of the new loading bridge at Gate 5. Both bridges are fully operational and look fantastic! The additional boarding bridge will be helpful post-recovery, as MFR seeks to attract larger aircraft and new routes to the Rogue Valley. As passenger numbers continue to rise during the recovery, MFR is looking to the future of air travel in our region.

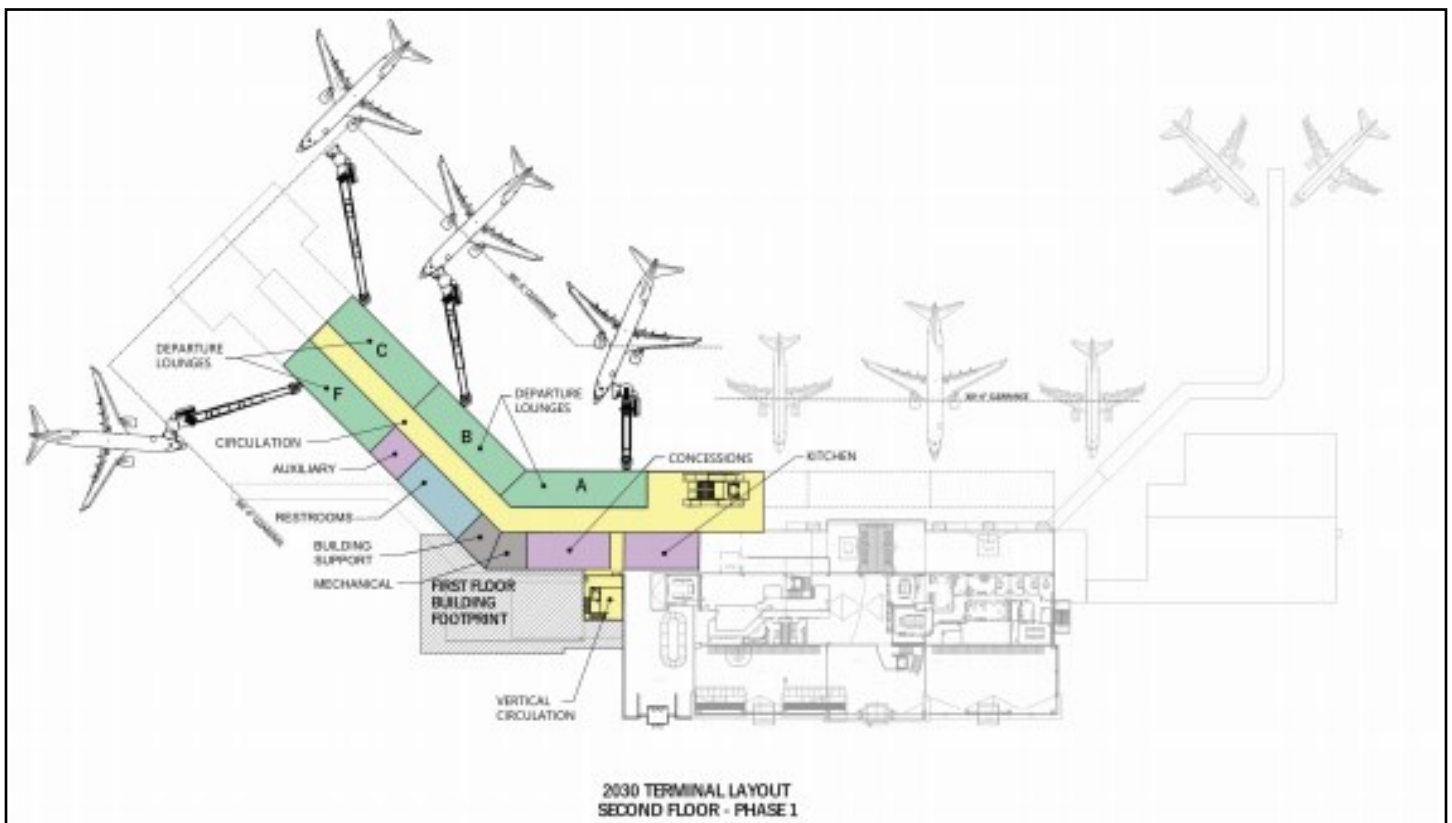


LED Lighting—Another large project MFR was able to complete in 2020 was transitioning all of the lighting in the terminal and on the ramp to LED. The effort was made possible by a grant from The Energy Trust of Oregon. The lights are brighter and much more efficient which will provide significant energy savings in years to come.

Master Plan and Expansion—MFR has nearly completed its latest Master Plan. Continued record growth has created a significant need for a larger terminal and more space for GA Aircraft on the airfield. MFR contracted Mead & Hunt, Inc. to prepare the Plan. MFR's previous Airport Master Plan was updated in 2014. The new Plan, begun in 2019, documents airport improvements to meet future demand and FAA standards in a manner complementary to community and stakeholder interests. The Plan's progress can be tracked by visiting www.mfrmasterplan.com. The Plan's two key products are the Airport Capital Improvement Program (ACIP) and the Airport Layout Plan (ALP). For this Master Plan, specific areas of emphasis include the following items:

- Evaluating a parallel runway and helicopter landing area.
- Diversifying Revenues through the development of non-aeronautical land uses.
- Improving local zoning and development review processes providing continued protection for MFR.
- Improving property easements on the property map
- Improving reliability through navigational aids and flight procedures.
- Addressing capacity in the passenger terminal and parking lots.
- Consolidating rental car operations and reclaiming terminal floorspace.
- Planning for a general aviation development.

The plan is scheduled for completion at the end of this year pending County and FAA review and approval periods.



The High School Flight Instruction Program—

In the second quarter of 2019, MFR began working with local charter schools and flight instructor Blue Raven Aviation to build a program to teach high school students to fly. With 13 students from 2 local schools, the High School Flight Instruction Program officially launched in September of 2020 despite the pandemic and schools being closed. The first-year cohort is comprised of students from both



REACH Charter School and Crater Lake Academy. Students began their first semester focusing on course work: Math and Science for Aviators. The second semester takes students through private pilot ground school and the necessary flying to earn enough hours to gain their private pilot license. However, the program doesn't end there. Students who return for the second year will work on their instrument rating and finish year 2 with commercial pilot ground school. The program came together through a collaborative effort between MFR, REACH Charter School, Crater Lake Academy, and Blue Raven Aviation.

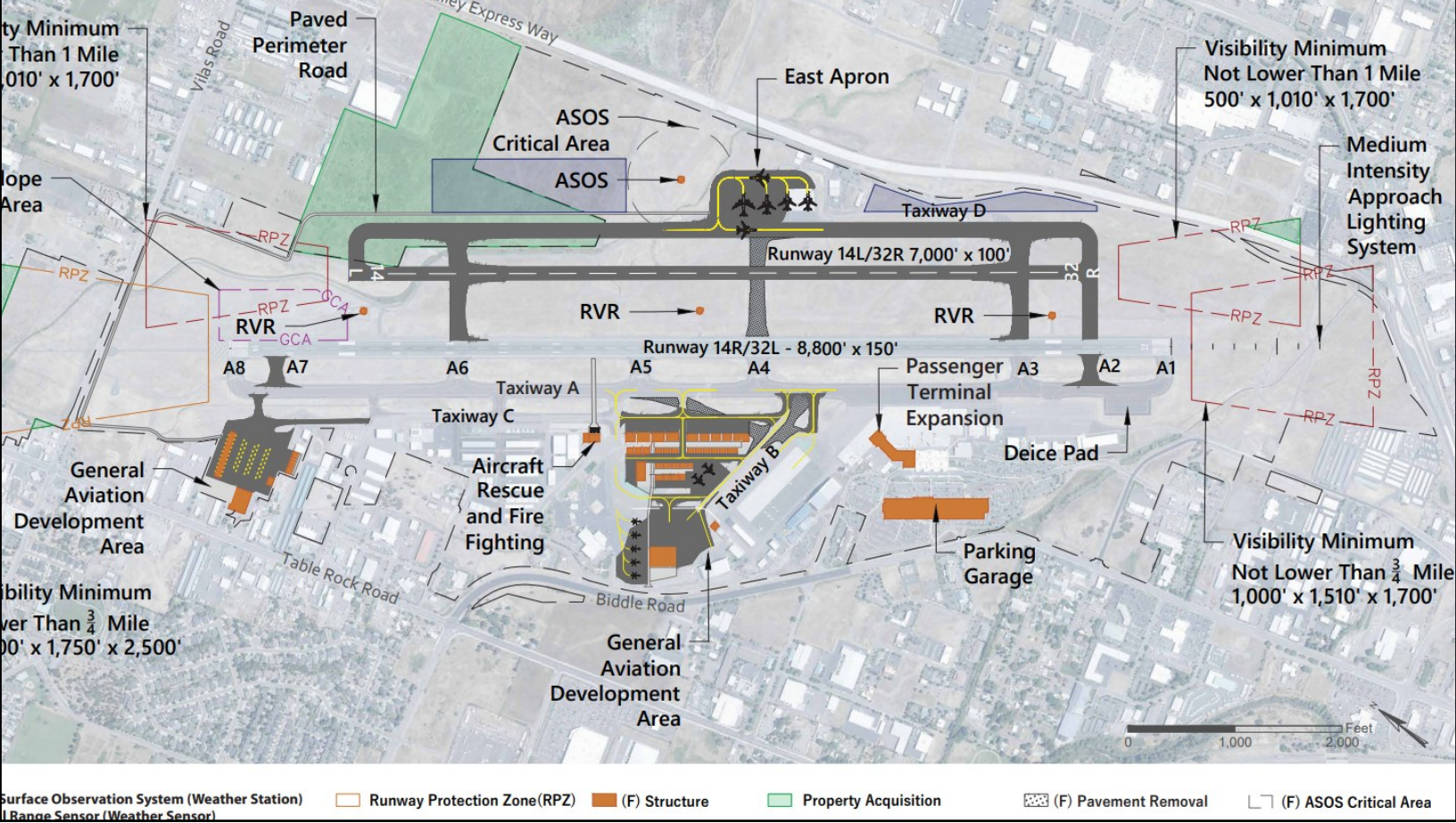


Currently, the high school flight instruction program at MFR has ten students. The students are from the local charter schools, Crater Lake Academy in Eagle Point and Reach Charter School in Grants Pass. These ten students made it through the first round of the program and have advanced to private pilot training. Students use the latest simulator technology and actual flying hours to work toward their private pilot license. Blue Raven Aviation is looking to expand the program this fall. Two charter schools located in Medford and Central Point are working with the company on the possibilities of getting their students into

the program. The addition of two schools would double the program's enrollment. The primary goal is to train students for careers in aviation, with the hope of strengthening the aviation ecosystem of Southern Oregon.

As of April 2021, MFR began developing an aviation-based CTE learning center on the airfield. Working with the local charter schools, and universities, MFR is laying the groundwork for the next generation of aviation industry professionals.





Future Growth and Expansion— Over the next five years, MFR will begin to construct new GA facilities at various locations on the airfield. The demand for GA space at MFR continues to grow every year. The new master plan addresses the airfield expansion to meet that demand and continue to meet the needs of the many helicopter operators at MFR. There will be an addition of more helicopter parking and separate taxiways.

With increasing military and USFS activity, MFR has decided to expand the east apron and improve infrastructure in the area. The east apron is home to the Supertanker operations and all other large plane operations like the Antonov AN-124. Currently, only two DC-10 supertankers can fit on the east apron at once, and during peak fire season, MFR hosts up to four DC-10s. With the expansion, MFR will have the capacity to host multiple planes and operations, fire, military, and cargo at any time.

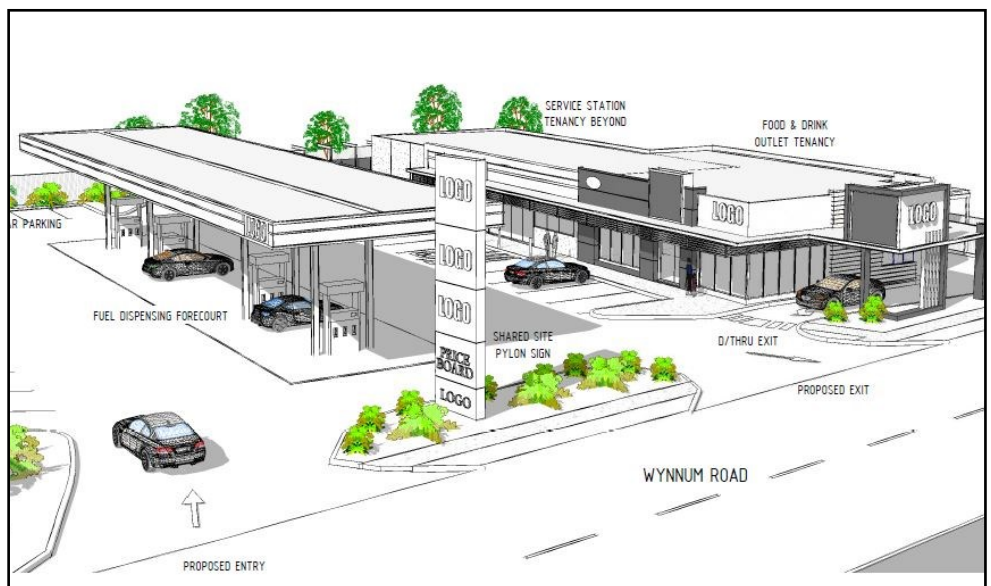
Another large project MFR will be undertaking is the construction of a new parking garage. In 2017 MFR built an additional 500 long-term parking spaces to meet demand, and by 2019 capacity was an issue again. The new parking structure will significantly increase capacity, and the bottom level will house the rental car facilities opening up more space inside the terminal for future growth.





MFR Tanker Base Activity– The Medford Airtanker Base serves as a collaborative and strategic hub for local, state, and federal wildfire protection agencies. The Base further enhances local firefighting capability for a five-county area that includes Jackson, Josephine, Coos, Curry, and Douglas Counties. At the peak of the local fire fighting effort, there are up to 4 DC-10s, 2 MD-87s, 1 DC-7, 1 BAe 146, and 4+ helicopters fighting fires in our region. MFR is very grateful for the service this Base provides. MFR also services as a refueling hub and service station for fire fighting efforts in Northern California.

Gas station and convenience store– MFR recently contracted with a research firm to conduct a feasibility study for a gas station and convenience store to be built on airport property. Once the study is completed, the airport will put out an RFP for potential partners in the development and operation of the site. Despite the pandemic, rental car volumes have remained strong and provide a built-in customer base.



A person with a backpack is sitting on a grassy hillside, looking out over a large lake at sunset. The sky is a mix of orange, pink, and blue. In the background, there are mountains and a small island in the lake. The person is wearing a red jacket and a green backpack. The scene is peaceful and scenic.

Fly MFR...

Thank You!