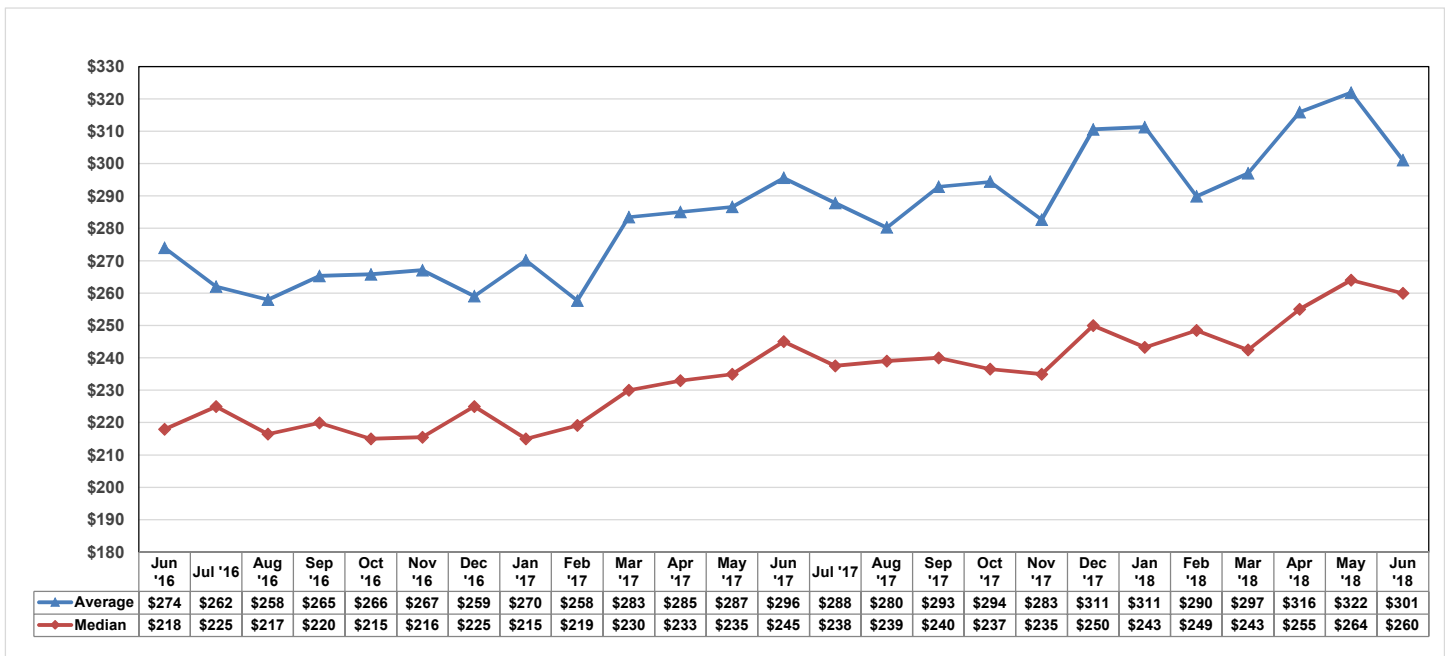




## MSA Sales by County Metropolitan Statistical Area 2018

### Orange County

Sales Range	Jan *	Feb *	Mar *	Apr *	May *	Jun	Jul	Aug	Sep	Oct	Nov	Dec	Total	% Total
\$1 - \$24,999	1	1	0	0	0	1	0	0	0	0	0	0	3	0.03%
\$25,000 - \$49,999	15	16	15	14	12	14	0	0	0	0	0	0	86	0.80%
\$50,000 - \$59,999	18	17	19	13	11	19	0	0	0	0	0	0	97	0.90%
\$60,000 - \$69,999	28	24	24	17	26	23	0	0	0	0	0	0	142	1.32%
\$70,000 - \$79,999	14	28	33	14	28	17	0	0	0	0	0	0	134	1.25%
\$80,000 - \$89,999	34	24	29	30	26	33	0	0	0	0	0	0	176	1.64%
\$90,000 - \$99,999	25	24	45	26	33	23	0	0	0	0	0	0	176	1.64%
\$100,000 - \$119,999	50	54	76	59	66	64	0	0	0	0	0	0	369	3.44%
\$120,000 - \$139,999	80	69	97	88	71	87	0	0	0	0	0	0	492	4.58%
\$140,000 - \$159,999	55	71	105	89	88	104	0	0	0	0	0	0	512	4.77%
\$160,000 - \$179,999	67	80	108	99	95	100	0	0	0	0	0	0	549	5.11%
\$180,000 - \$199,999	80	77	118	108	123	112	0	0	0	0	0	0	618	5.76%
\$200,000 - \$249,999	237	249	368	349	380	324	0	0	0	0	0	0	1,907	17.76%
\$250,000 - \$299,999	202	230	314	296	334	329	0	0	0	0	0	0	1,705	15.88%
\$300,000 - \$349,999	141	165	203	233	262	243	0	0	0	0	0	0	1,247	11.61%
\$350,000 - \$399,999	75	115	118	137	155	153	0	0	0	0	0	0	753	7.01%
\$400,000 - \$499,999	80	95	127	134	167	137	0	0	0	0	0	0	740	6.89%
\$500,000 - \$599,999	46	36	75	50	84	76	0	0	0	0	0	0	367	3.42%
\$600,000 - \$699,999	28	15	29	39	35	26	0	0	0	0	0	0	172	1.60%
\$700,000 - \$799,999	20	19	24	25	28	23	0	0	0	0	0	0	139	1.29%
\$800,000 - \$899,999	11	12	16	14	13	15	0	0	0	0	0	0	81	0.75%
\$900,000 - \$999,999	7	10	8	10	5	10	0	0	0	0	0	0	50	0.47%
\$1.0M - \$1,499,999	16	14	17	24	22	19	0	0	0	0	0	0	112	1.04%
\$1.5M - \$1,999,999	5	7	12	8	17	4	0	0	0	0	0	0	53	0.49%
\$2.0M - \$4,999,999	9	3	7	12	12	7	0	0	0	0	0	0	50	0.47%
\$5.0M and above	2	0	1	1	2	1	0	0	0	0	0	0	7	0.07%
<b>2018</b>	<b>1,346</b>	<b>1,455</b>	<b>1,988</b>	<b>1,889</b>	<b>2,095</b>	<b>1,964</b>	<b>0</b>	<b>0</b>	<b>0</b>	<b>0</b>	<b>0</b>	<b>0</b>	<b>10,737</b>	<b>100.00%</b>
<b>2017</b>	<b>1,352</b>	<b>1,504</b>	<b>2,034</b>	<b>1,737</b>	<b>2,137</b>	<b>2,234</b>	<b>1,945</b>	<b>2,076</b>	<b>1,505</b>	<b>1,662</b>	<b>1,633</b>	<b>1,788</b>	<b>10,998</b>	
<b>% Change</b>	<b>-0.44%</b>	<b>-3.26%</b>	<b>-2.26%</b>	<b>8.75%</b>	<b>-1.97%</b>	<b>-12.09%</b>	<b>0.00%</b>	<b>0.00%</b>	<b>0.00%</b>	<b>0.00%</b>	<b>0.00%</b>	<b>0.00%</b>	<b>-2.37%</b>	
<b>2018 YTD</b>	<b>1,346</b>	<b>2,801</b>	<b>4,789</b>	<b>6,678</b>	<b>8,773</b>	<b>10,737</b>	<b>0</b>	<b>0</b>	<b>0</b>	<b>0</b>	<b>0</b>	<b>0</b>	<b>10,737</b>	
<b>2017 YTD</b>	<b>1,352</b>	<b>2,856</b>	<b>4,890</b>	<b>6,627</b>	<b>8,764</b>	<b>10,998</b>	<b>12,943</b>	<b>15,019</b>	<b>16,524</b>	<b>18,186</b>	<b>19,819</b>	<b>21,607</b>	<b>10,998</b>	
<b>% Change</b>	<b>-0.44%</b>	<b>-1.93%</b>	<b>-2.07%</b>	<b>0.77%</b>	<b>0.10%</b>	<b>-2.37%</b>	<b>0.00%</b>	<b>0.00%</b>	<b>0.00%</b>	<b>0.00%</b>	<b>0.00%</b>	<b>0.00%</b>	<b>-2.37%</b>	



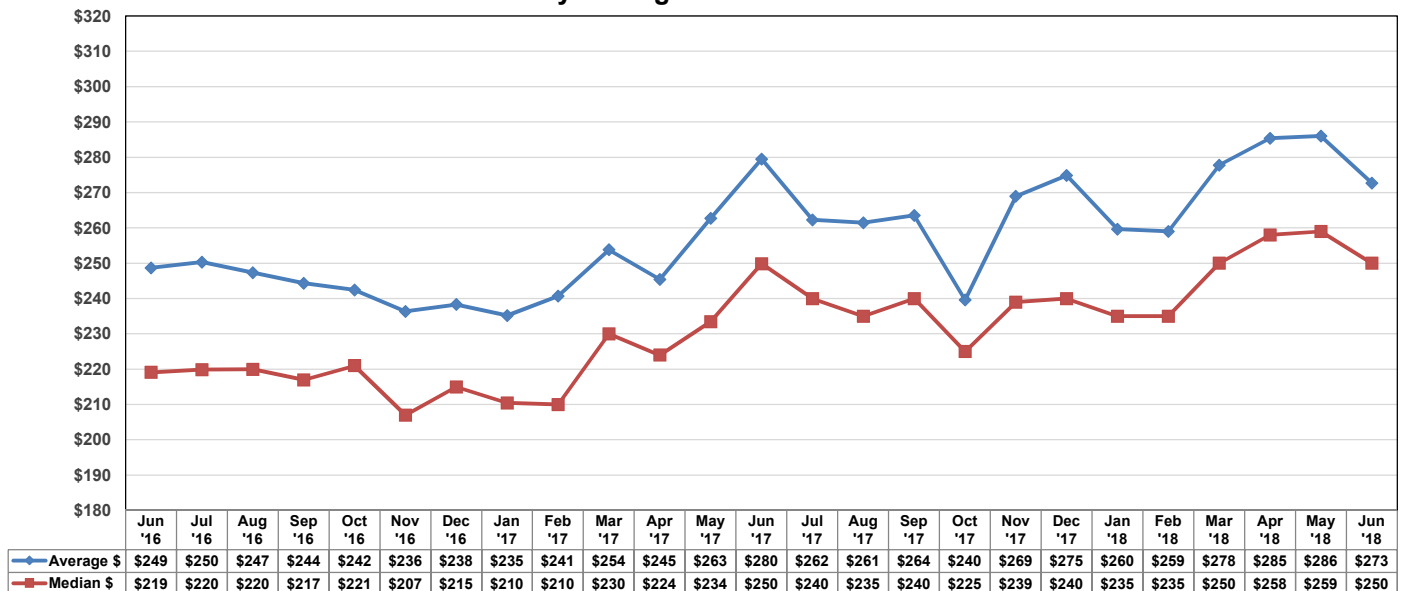


## MSA Sales by County Metropolitan Statistical Area 2018

### Seminole County

Sales Range	Jan *	Feb *	Mar *	Apr *	May *	Jun	Jul	Aug	Sep	Oct	Nov	Dec	Total	% Total
\$1 - \$24,999	0	1	0	0	0	0	0	0	0	0	0	0	1	0.02%
\$25,000 - \$49,999	5	4	5	4	1	1	0	0	0	0	0	0	20	0.50%
\$50,000 - \$59,999	6	3	5	2	4	3	0	0	0	0	0	0	23	0.57%
\$60,000 - \$69,999	5	4	13	7	17	5	0	0	0	0	0	0	51	1.27%
\$70,000 - \$79,999	9	18	11	13	12	8	0	0	0	0	0	0	71	1.76%
\$80,000 - \$89,999	11	8	11	13	8	15	0	0	0	0	0	0	66	1.64%
\$90,000 - \$99,999	7	11	7	10	10	11	0	0	0	0	0	0	56	1.39%
\$100,000 - \$119,999	21	21	23	18	18	21	0	0	0	0	0	0	122	3.03%
\$120,000 - \$139,999	28	17	32	26	34	29	0	0	0	0	0	0	166	4.12%
\$140,000 - \$159,999	25	32	36	37	37	35	0	0	0	0	0	0	202	5.02%
\$160,000 - \$179,999	28	23	45	33	41	38	0	0	0	0	0	0	208	5.17%
\$180,000 - \$199,999	23	45	36	32	62	54	0	0	0	0	0	0	252	6.26%
\$200,000 - \$249,999	99	108	144	128	137	164	0	0	0	0	0	0	780	19.37%
\$250,000 - \$299,999	77	87	128	126	125	138	0	0	0	0	0	0	681	16.92%
\$300,000 - \$349,999	47	49	81	82	99	85	0	0	0	0	0	0	443	11.00%
\$350,000 - \$399,999	20	40	46	42	74	58	0	0	0	0	0	0	280	6.95%
\$400,000 - \$499,999	40	30	61	71	72	63	0	0	0	0	0	0	337	8.37%
\$500,000 - \$599,999	11	14	23	29	27	24	0	0	0	0	0	0	128	3.18%
\$600,000 - \$699,999	6	5	16	11	15	11	0	0	0	0	0	0	64	1.59%
\$700,000 - \$799,999	3	6	5	6	8	3	0	0	0	0	0	0	31	0.77%
\$800,000 - \$899,999	0	1	4	3	6	3	0	0	0	0	0	0	17	0.42%
\$900,000 - \$999,999	2	1	2	0	0	2	0	0	0	0	0	0	7	0.17%
\$1.0M - \$1,499,999	0	3	5	4	2	0	0	0	0	0	0	0	14	0.35%
\$1.5M - \$1,999,999	0	0	0	1	2	1	0	0	0	0	0	0	4	0.10%
\$2.0M - \$4,999,999	2	0	0	0	0	0	0	0	0	0	0	0	2	0.05%
\$5.0M and above	0	0	0	0	0	0	0	0	0	0	0	0	0	0.00%
<b>2018</b>	<b>475</b>	<b>531</b>	<b>739</b>	<b>698</b>	<b>811</b>	<b>772</b>	<b>0</b>	<b>0</b>	<b>0</b>	<b>0</b>	<b>0</b>	<b>0</b>	<b>4,026</b>	<b>100.00%</b>
<b>2017</b>	<b>470</b>	<b>510</b>	<b>766</b>	<b>667</b>	<b>921</b>	<b>854</b>	<b>771</b>	<b>793</b>	<b>566</b>	<b>606</b>	<b>555</b>	<b>666</b>	<b>4,188</b>	
<b>% Change</b>	<b>1.06%</b>	<b>4.12%</b>	<b>-3.52%</b>	<b>4.65%</b>	<b>-11.94%</b>	<b>-9.60%</b>	<b>0.00%</b>	<b>0.00%</b>	<b>0.00%</b>	<b>0.00%</b>	<b>0.00%</b>	<b>0.00%</b>	<b>-3.87%</b>	
<b>2018 YTD</b>	<b>475</b>	<b>1,006</b>	<b>1,745</b>	<b>2,443</b>	<b>3,254</b>	<b>4,026</b>	<b>0</b>	<b>0</b>	<b>0</b>	<b>0</b>	<b>0</b>	<b>0</b>	<b>4,026</b>	
<b>2017 YTD</b>	<b>470</b>	<b>980</b>	<b>1,746</b>	<b>2,413</b>	<b>3,334</b>	<b>4,188</b>	<b>4,959</b>	<b>5,752</b>	<b>6,318</b>	<b>6,924</b>	<b>7,479</b>	<b>8,145</b>	<b>4,188</b>	
<b>% Change</b>	<b>1.06%</b>	<b>2.65%</b>	<b>-0.06%</b>	<b>1.24%</b>	<b>-2.40%</b>	<b>-3.87%</b>	<b>0.00%</b>	<b>0.00%</b>	<b>0.00%</b>	<b>0.00%</b>	<b>0.00%</b>	<b>0.00%</b>	<b>-3.87%</b>	

### Monthly Average and Median Prices



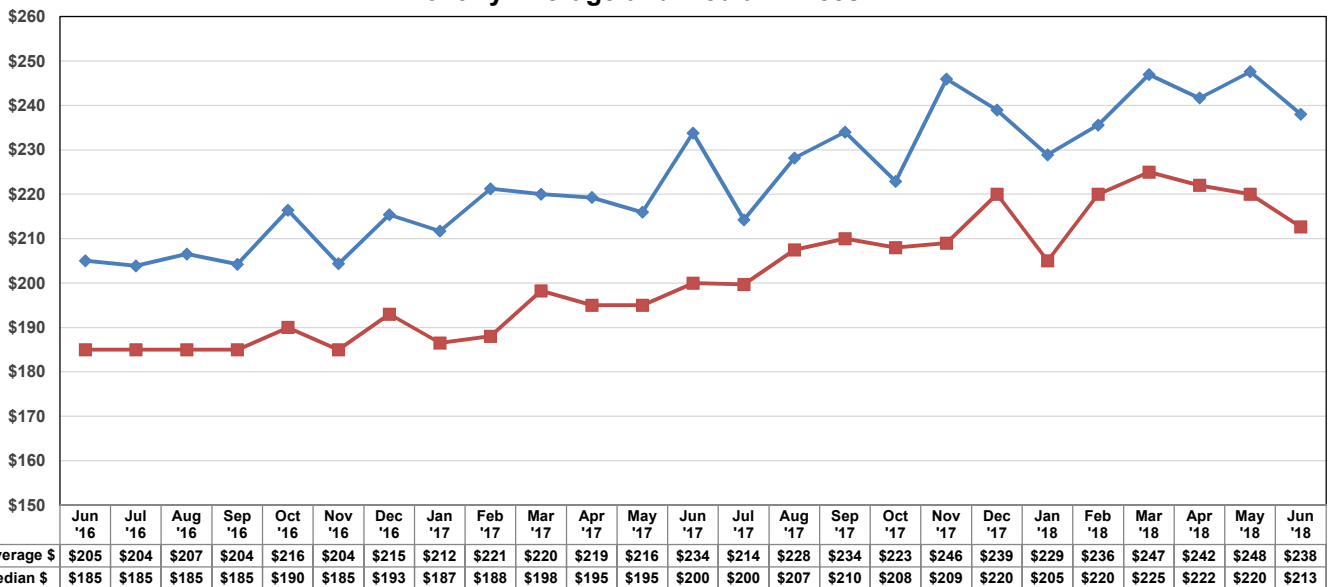


## MSA Sales by County Metropolitan Statistical Area 2018

### Osceola County

Sales Range	Jan *	Feb *	Mar *	Apr *	May *	Jun	Jul	Aug	Sep	Oct	Nov	Dec	Total	% Total
\$1 - \$24,999	0	0	0	0	0	0	0	0	0	0	0	0	0	0.00%
\$25,000 - \$49,999	3	3	2	5	1	0	0	0	0	0	0	0	14	0.36%
\$50,000 - \$59,999	0	2	1	0	5	3	0	0	0	0	0	0	11	0.28%
\$60,000 - \$69,999	3	6	5	3	2	5	0	0	0	0	0	0	24	0.62%
\$70,000 - \$79,999	3	2	2	3	4	1	0	0	0	0	0	0	15	0.39%
\$80,000 - \$89,999	3	6	10	4	6	4	0	0	0	0	0	0	33	0.85%
\$90,000 - \$99,999	6	6	6	7	11	12	0	0	0	0	0	0	48	1.24%
\$100,000 - \$119,999	26	25	22	30	15	30	0	0	0	0	0	0	148	3.82%
\$120,000 - \$139,999	34	26	29	32	40	40	0	0	0	0	0	0	201	5.18%
\$140,000 - \$159,999	38	51	51	40	36	39	0	0	0	0	0	0	255	6.57%
\$160,000 - \$179,999	54	56	58	64	76	71	0	0	0	0	0	0	379	9.77%
\$180,000 - \$199,999	56	49	65	74	90	68	0	0	0	0	0	0	402	10.36%
\$200,000 - \$249,999	104	117	194	198	227	206	0	0	0	0	0	0	1,046	26.97%
\$250,000 - \$299,999	73	108	115	117	109	77	0	0	0	0	0	0	599	15.44%
\$300,000 - \$349,999	29	44	62	62	61	46	0	0	0	0	0	0	304	7.84%
\$350,000 - \$399,999	17	14	24	26	27	17	0	0	0	0	0	0	125	3.22%
\$400,000 - \$499,999	13	27	26	10	33	21	0	0	0	0	0	0	130	3.35%
\$500,000 - \$599,999	9	8	21	10	13	10	0	0	0	0	0	0	71	1.83%
\$600,000 - \$699,999	3	3	5	5	8	5	0	0	0	0	0	0	29	0.75%
\$700,000 - \$799,999	2	3	1	2	3	3	0	0	0	0	0	0	14	0.36%
\$800,000 - \$899,999	1	0	1	2	2	1	0	0	0	0	0	0	7	0.18%
\$900,000 - \$999,999	1	1	1	2	0	2	0	0	0	0	0	0	7	0.18%
\$1.0M - \$1,499,999	1	0	3	2	4	2	0	0	0	0	0	0	12	0.31%
\$1.5M - \$1,999,999	0	0	0	2	0	1	0	0	0	0	0	0	3	0.08%
\$2.0M - \$4,999,999	0	0	0	0	1	1	0	0	0	0	0	0	2	0.05%
\$5.0M and above	0	0	0	0	0	0	0	0	0	0	0	0	0	0.00%
<b>2018</b>	<b>479</b>	<b>557</b>	<b>704</b>	<b>700</b>	<b>774</b>	<b>665</b>	<b>0</b>	<b>0</b>	<b>0</b>	<b>0</b>	<b>0</b>	<b>0</b>	<b>3,879</b>	<b>100.00%</b>
<b>2017</b>	<b>455</b>	<b>541</b>	<b>660</b>	<b>638</b>	<b>762</b>	<b>738</b>	<b>618</b>	<b>686</b>	<b>478</b>	<b>565</b>	<b>580</b>	<b>614</b>	<b>3,794</b>	
<b>% Change</b>	<b>5.27%</b>	<b>2.96%</b>	<b>6.67%</b>	<b>9.72%</b>	<b>1.57%</b>	<b>-9.89%</b>	<b>0.00%</b>	<b>0.00%</b>	<b>0.00%</b>	<b>0.00%</b>	<b>0.00%</b>	<b>0.00%</b>	<b>2.24%</b>	
<b>2018 YTD</b>	<b>479</b>	<b>1,036</b>	<b>1,740</b>	<b>2,440</b>	<b>3,214</b>	<b>3,879</b>	<b>0</b>	<b>0</b>	<b>0</b>	<b>0</b>	<b>0</b>	<b>0</b>	<b>3,879</b>	
<b>2017 YTD</b>	<b>455</b>	<b>996</b>	<b>1,656</b>	<b>2,294</b>	<b>3,056</b>	<b>3,794</b>	<b>4,412</b>	<b>5,098</b>	<b>5,576</b>	<b>6,141</b>	<b>6,721</b>	<b>7,335</b>	<b>3,794</b>	
<b>% Change</b>	<b>5.27%</b>	<b>4.02%</b>	<b>5.07%</b>	<b>6.36%</b>	<b>5.17%</b>	<b>2.24%</b>	<b>0.00%</b>	<b>0.00%</b>	<b>0.00%</b>	<b>0.00%</b>	<b>0.00%</b>	<b>0.00%</b>	<b>2.24%</b>	

### Monthly Average and Median Prices



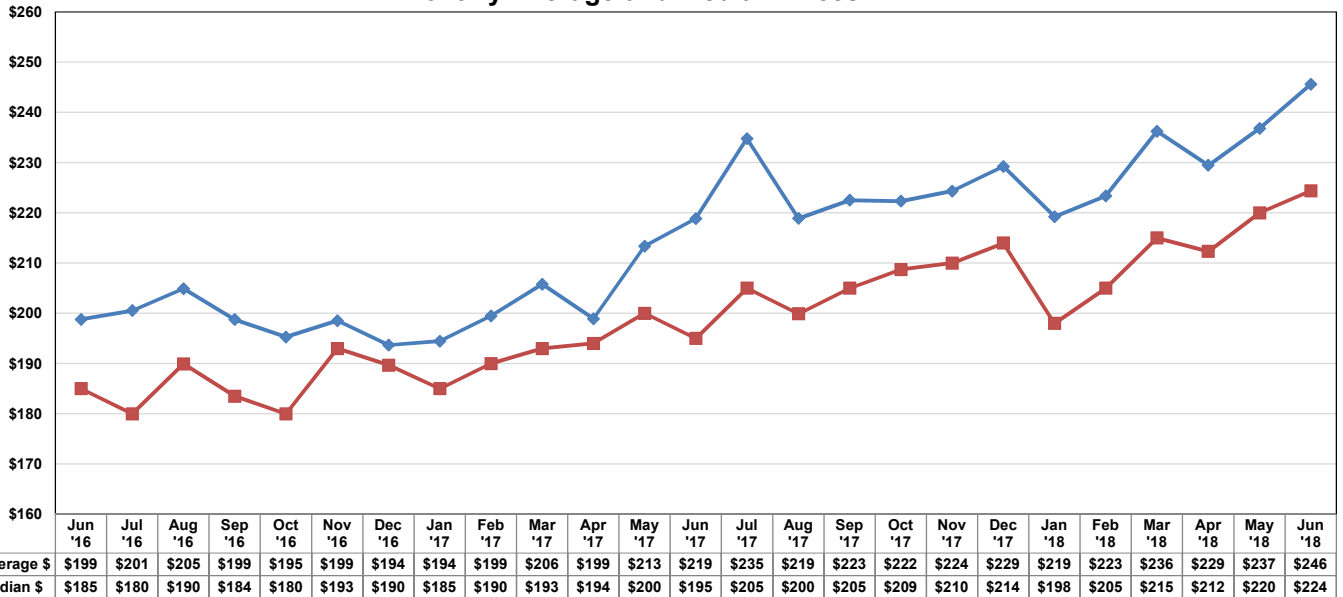


## MSA Sales by County Metropolitan Statistical Area 2018

### Lake County

Sales Range	Jan *	Feb *	Mar *	Apr *	May *	Jun	Jul	Aug	Sep	Oct	Nov	Dec	Total	% Total
\$1 - \$24,999	3	0	1	4	3	2	0	0	0	0	0	0	13	0.36%
\$25,000 - \$49,999	6	14	12	13	11	14	0	0	0	0	0	0	70	1.92%
\$50,000 - \$59,999	6	12	10	15	8	4	0	0	0	0	0	0	55	1.51%
\$60,000 - \$69,999	7	8	7	8	8	5	0	0	0	0	0	0	43	1.18%
\$70,000 - \$79,999	8	11	8	11	5	10	0	0	0	0	0	0	53	1.46%
\$80,000 - \$89,999	5	8	11	10	17	10	0	0	0	0	0	0	61	1.68%
\$90,000 - \$99,999	5	8	11	11	11	11	0	0	0	0	0	0	57	1.57%
\$100,000 - \$119,999	18	17	18	16	17	15	0	0	0	0	0	0	101	2.77%
\$120,000 - \$139,999	32	35	32	32	33	28	0	0	0	0	0	0	192	5.27%
\$140,000 - \$159,999	32	38	34	31	36	43	0	0	0	0	0	0	214	5.88%
\$160,000 - \$179,999	50	36	59	58	54	46	0	0	0	0	0	0	303	8.32%
\$180,000 - \$199,999	44	67	87	75	70	44	0	0	0	0	0	0	387	10.63%
\$200,000 - \$249,999	80	116	167	168	213	142	0	0	0	0	0	0	886	24.34%
\$250,000 - \$299,999	66	70	103	92	99	97	0	0	0	0	0	0	527	14.48%
\$300,000 - \$349,999	32	32	53	43	53	45	0	0	0	0	0	0	258	7.09%
\$350,000 - \$399,999	11	22	31	37	35	28	0	0	0	0	0	0	164	4.51%
\$400,000 - \$499,999	11	15	33	29	30	27	0	0	0	0	0	0	145	3.98%
\$500,000 - \$599,999	3	4	9	8	7	15	0	0	0	0	0	0	46	1.26%
\$600,000 - \$699,999	2	3	2	4	5	4	0	0	0	0	0	0	20	0.55%
\$700,000 - \$799,999	2	3	0	3	5	1	0	0	0	0	0	0	14	0.38%
\$800,000 - \$899,999	0	2	3	0	1	2	0	0	0	0	0	0	8	0.22%
\$900,000 - \$999,999	0	3	2	0	1	4	0	0	0	0	0	0	10	0.27%
\$1.0M - \$1,499,999	0	1	3	2	1	3	0	0	0	0	0	0	10	0.27%
\$1.5M - \$1,999,999	2	0	0	0	1	0	0	0	0	0	0	0	3	0.08%
\$2.0M - \$4,999,999	0	0	0	0	0	0	0	0	0	0	0	0	0	0.00%
\$5.0M and above	0	0	0	0	0	0	0	0	0	0	0	0	0	0.00%
<b>2018</b>	<b>425</b>	<b>525</b>	<b>696</b>	<b>670</b>	<b>724</b>	<b>600</b>	<b>0</b>	<b>0</b>	<b>0</b>	<b>0</b>	<b>0</b>	<b>0</b>	<b>3,640</b>	<b>100.00%</b>
<b>2017</b>	<b>457</b>	<b>465</b>	<b>725</b>	<b>675</b>	<b>697</b>	<b>688</b>	<b>679</b>	<b>665</b>	<b>483</b>	<b>568</b>	<b>551</b>	<b>636</b>	<b>3,707</b>	
<b>% Change</b>	<b>-7.00%</b>	<b>12.90%</b>	<b>-4.00%</b>	<b>-0.74%</b>	<b>3.87%</b>	<b>-12.79%</b>	<b>0.00%</b>	<b>0.00%</b>	<b>0.00%</b>	<b>0.00%</b>	<b>0.00%</b>	<b>0.00%</b>	<b>-1.81%</b>	
<b>2018 YTD</b>	<b>425</b>	<b>950</b>	<b>1,646</b>	<b>2,316</b>	<b>3,040</b>	<b>3,640</b>	<b>0</b>	<b>0</b>	<b>0</b>	<b>0</b>	<b>0</b>	<b>0</b>	<b>3,640</b>	
<b>2017 YTD</b>	<b>457</b>	<b>922</b>	<b>1,647</b>	<b>2,322</b>	<b>3,019</b>	<b>3,707</b>	<b>4,386</b>	<b>5,051</b>	<b>5,534</b>	<b>6,102</b>	<b>6,653</b>	<b>7,289</b>	<b>3,707</b>	
<b>% Change</b>	<b>-7.00%</b>	<b>3.04%</b>	<b>-0.06%</b>	<b>-0.26%</b>	<b>0.70%</b>	<b>-1.81%</b>	<b>0.00%</b>	<b>0.00%</b>	<b>0.00%</b>	<b>0.00%</b>	<b>0.00%</b>	<b>0.00%</b>	<b>-1.81%</b>	

### Monthly Average and Median Prices



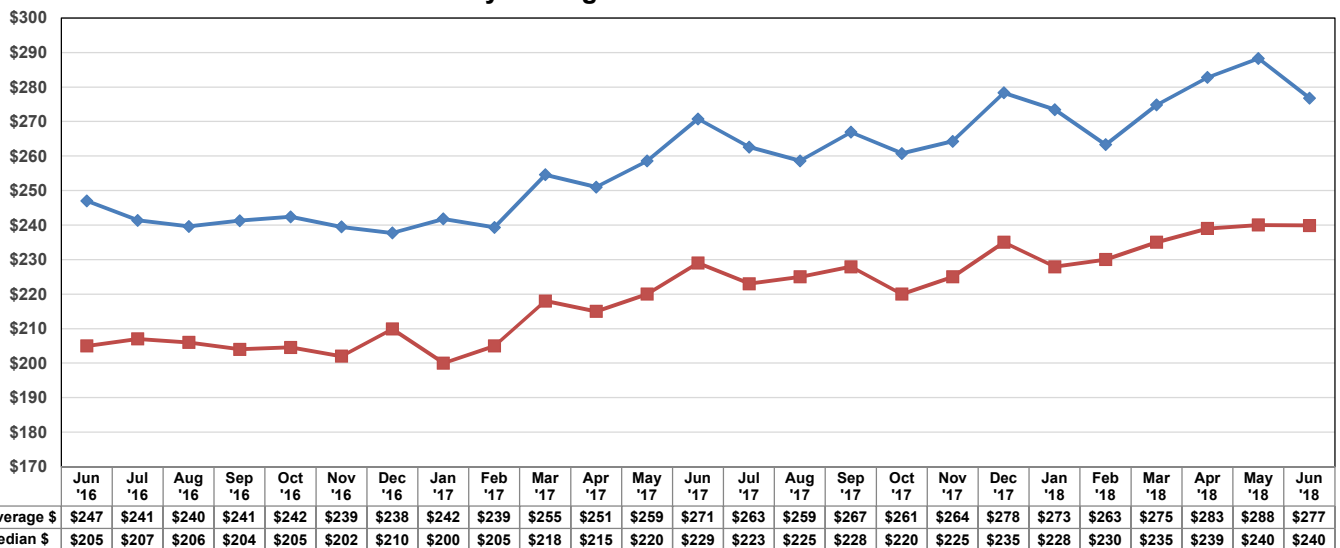


## MSA Sales by County Metropolitan Statistical Area 2018

### Lake, Orange, Osceola, and Seminole Counties

Sales Range	Jan *	Feb *	Mar *	Apr *	May *	Jun	Jul	Aug	Sep	Oct	Nov	Dec	Total	% Total
\$1 - \$24,999	4	2	1	4	3	3	0	0	0	0	0	0	17	0.08%
\$25,000 - \$49,999	29	37	34	36	25	29	0	0	0	0	0	0	190	0.85%
\$50,000 - \$59,999	30	34	35	30	28	29	0	0	0	0	0	0	186	0.83%
\$60,000 - \$69,999	43	42	49	35	53	38	0	0	0	0	0	0	260	1.17%
\$70,000 - \$79,999	34	59	54	41	49	36	0	0	0	0	0	0	273	1.23%
\$80,000 - \$89,999	53	46	61	57	57	62	0	0	0	0	0	0	336	1.51%
\$90,000 - \$99,999	43	49	69	54	65	57	0	0	0	0	0	0	337	1.51%
\$100,000 - \$119,999	115	117	139	123	116	130	0	0	0	0	0	0	740	3.32%
\$120,000 - \$139,999	174	147	190	178	178	184	0	0	0	0	0	0	1,051	4.72%
\$140,000 - \$159,999	150	192	226	197	197	221	0	0	0	0	0	0	1,183	5.31%
\$160,000 - \$179,999	199	195	270	254	266	255	0	0	0	0	0	0	1,439	6.46%
\$180,000 - \$199,999	203	238	306	289	345	278	0	0	0	0	0	0	1,659	7.45%
\$200,000 - \$249,999	520	590	873	843	957	836	0	0	0	0	0	0	4,619	20.73%
\$250,000 - \$299,999	418	495	660	631	667	641	0	0	0	0	0	0	3,512	15.76%
\$300,000 - \$349,999	249	290	399	420	475	419	0	0	0	0	0	0	2,252	10.11%
\$350,000 - \$399,999	123	191	219	242	291	256	0	0	0	0	0	0	1,322	5.93%
\$400,000 - \$499,999	144	167	247	244	302	248	0	0	0	0	0	0	1,352	6.07%
\$500,000 - \$599,999	69	62	128	97	131	125	0	0	0	0	0	0	612	2.75%
\$600,000 - \$699,999	39	26	52	59	63	46	0	0	0	0	0	0	285	1.28%
\$700,000 - \$799,999	27	31	30	36	44	30	0	0	0	0	0	0	198	0.89%
\$800,000 - \$899,999	12	15	24	19	22	21	0	0	0	0	0	0	113	0.51%
\$900,000 - \$999,999	10	15	13	12	6	18	0	0	0	0	0	0	74	0.33%
\$1.0M - \$1,499,999	17	18	28	32	29	24	0	0	0	0	0	0	148	0.66%
\$1.5M - \$1,999,999	7	7	12	11	20	6	0	0	0	0	0	0	63	0.28%
\$2.0M - \$4,999,999	11	3	7	12	13	8	0	0	0	0	0	0	54	0.24%
\$5.0M and above	2	0	1	1	2	1	0	0	0	0	0	0	7	0.03%
<b>2018</b>	<b>2,725</b>	<b>3,068</b>	<b>4,127</b>	<b>3,957</b>	<b>4,404</b>	<b>4,001</b>	<b>0</b>	<b>0</b>	<b>0</b>	<b>0</b>	<b>0</b>	<b>0</b>	<b>22,282</b>	<b>100.00%</b>
<b>2017</b>	<b>2,734</b>	<b>3,020</b>	<b>4,185</b>	<b>3,717</b>	<b>4,517</b>	<b>4,514</b>	<b>4,013</b>	<b>4,220</b>	<b>3,032</b>	<b>3,401</b>	<b>3,319</b>	<b>3,704</b>	<b>22,687</b>	
<b>% Change</b>	<b>-0.33%</b>	<b>1.59%</b>	<b>-1.39%</b>	<b>6.46%</b>	<b>-2.50%</b>	<b>-11.36%</b>	<b>0.00%</b>	<b>0.00%</b>	<b>0.00%</b>	<b>0.00%</b>	<b>0.00%</b>	<b>0.00%</b>	<b>-1.79%</b>	
<b>2018 YTD</b>	<b>2,725</b>	<b>5,793</b>	<b>9,920</b>	<b>13,877</b>	<b>18,281</b>	<b>22,282</b>	<b>0</b>	<b>0</b>	<b>0</b>	<b>0</b>	<b>0</b>	<b>0</b>	<b>22,282</b>	
<b>2017 YTD</b>	<b>2,734</b>	<b>5,754</b>	<b>9,939</b>	<b>13,656</b>	<b>18,173</b>	<b>22,687</b>	<b>26,700</b>	<b>30,920</b>	<b>33,952</b>	<b>37,353</b>	<b>40,672</b>	<b>44,376</b>	<b>22,687</b>	
<b>% Change</b>	<b>-0.33%</b>	<b>0.68%</b>	<b>-0.19%</b>	<b>1.62%</b>	<b>0.59%</b>	<b>-1.79%</b>	<b>0.00%</b>	<b>0.00%</b>	<b>0.00%</b>	<b>0.00%</b>	<b>0.00%</b>	<b>0.00%</b>	<b>-1.79%</b>	

### Monthly Average and Median Prices



This data represents single-family attached and detached sales. Reported sales are dependent upon timeliness of sales and totality of information reported by participants. The data reflects only the sales published through My Florida Regional MLS and does not include all sales in the reported areas. Neither the Association nor the MFRMLS is in any way responsible for its accuracy.