

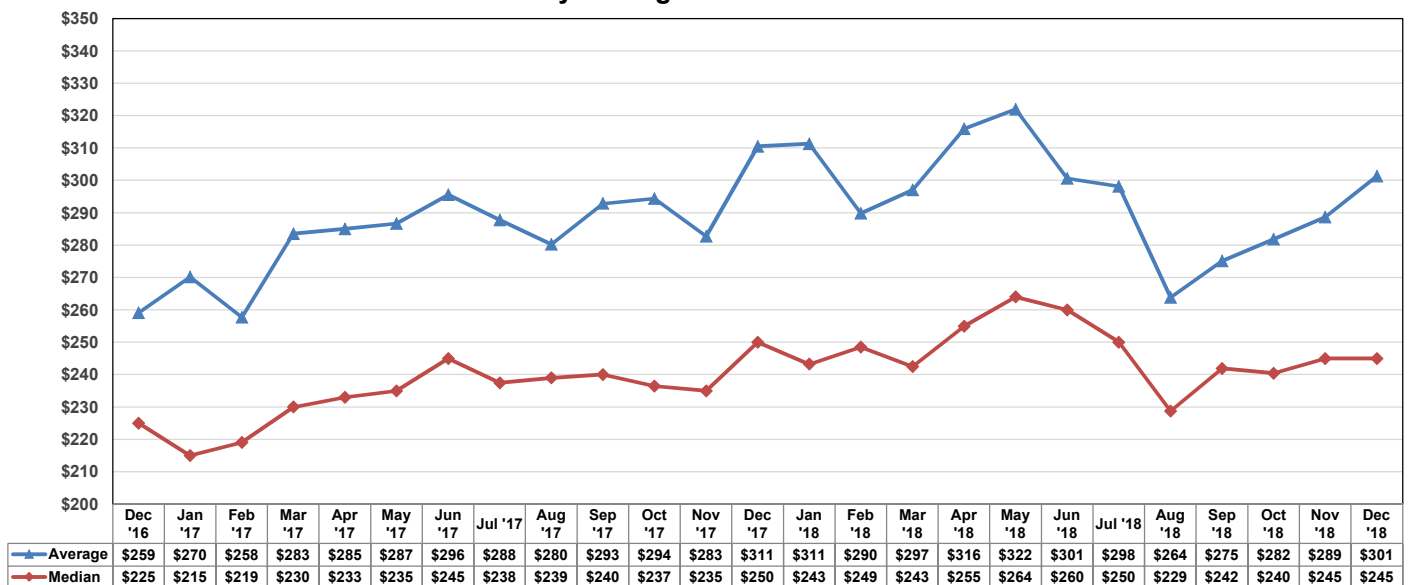


## MSA Sales by County Metropolitan Statistical Area 2018

### Orange County

Sales Range	Jan *	Feb *	Mar *	Apr *	May *	Jun *	Jul *	Aug *	Sep *	Oct *	Nov *	Dec	Total	% Total
\$1 - \$24,999	1	1	0	0	0	1	2	2	1	2	2	0	12	0.06%
\$25,000 - \$49,999	15	16	15	14	12	14	9	20	21	9	7	9	161	0.79%
\$50,000 - \$59,999	18	17	19	13	11	19	14	18	11	10	11	10	171	0.84%
\$60,000 - \$69,999	28	24	24	17	26	23	13	28	16	15	12	9	235	1.15%
\$70,000 - \$79,999	14	28	33	14	28	17	16	37	18	26	28	18	277	1.36%
\$80,000 - \$89,999	34	24	29	30	26	33	28	38	36	24	22	26	350	1.71%
\$90,000 - \$99,999	25	24	45	26	33	23	33	50	21	37	25	25	367	1.80%
\$100,000 - \$119,999	50	54	76	59	66	64	71	95	53	71	58	53	770	3.77%
\$120,000 - \$139,999	80	69	97	88	71	90	82	112	77	75	54	72	967	4.73%
\$140,000 - \$159,999	55	71	105	89	88	107	91	92	86	84	86	73	1,027	5.03%
\$160,000 - \$179,999	67	80	108	99	95	100	94	106	68	96	68	75	1,056	5.17%
\$180,000 - \$199,999	80	77	118	108	123	113	111	146	67	81	90	90	1,204	5.89%
\$200,000 - \$249,999	237	249	368	349	380	328	380	361	288	325	275	269	3,809	18.64%
\$250,000 - \$299,999	202	230	314	296	334	332	291	290	236	262	238	233	3,258	15.95%
\$300,000 - \$349,999	141	165	203	233	262	244	215	172	153	195	147	137	2,267	11.10%
\$350,000 - \$399,999	75	115	118	137	155	153	144	99	107	84	100	88	1,375	6.73%
\$400,000 - \$499,999	80	95	127	134	167	138	114	96	103	102	92	93	1,341	6.56%
\$500,000 - \$599,999	46	36	75	50	84	76	49	41	43	38	38	31	607	2.97%
\$600,000 - \$699,999	28	15	29	39	35	27	41	21	18	24	27	20	324	1.59%
\$700,000 - \$799,999	20	19	24	25	28	23	24	15	11	13	18	12	232	1.14%
\$800,000 - \$899,999	11	12	16	14	13	15	18	13	8	15	9	6	150	0.73%
\$900,000 - \$999,999	7	10	8	10	5	10	18	12	7	9	5	3	104	0.51%
\$1.0M - \$1,499,999	16	14	17	24	22	19	23	12	5	19	10	12	193	0.94%
\$1.5M - \$1,999,999	5	7	12	8	17	4	6	2	6	6	9	8	90	0.44%
\$2.0M - \$4,999,999	9	3	7	12	12	7	3	7	2	2	4	8	76	0.37%
\$5.0M and above	2	0	1	1	2	1	0	0	0	0	0	2	9	0.04%
<b>2018</b>	<b>1,346</b>	<b>1,455</b>	<b>1,988</b>	<b>1,889</b>	<b>2,095</b>	<b>1,981</b>	<b>1,890</b>	<b>1,885</b>	<b>1,462</b>	<b>1,624</b>	<b>1,435</b>	<b>1,382</b>	<b>20,432</b>	<b>100.00%</b>
<b>2017</b>	<b>1,352</b>	<b>1,504</b>	<b>2,034</b>	<b>1,737</b>	<b>2,137</b>	<b>2,234</b>	<b>1,945</b>	<b>2,076</b>	<b>1,505</b>	<b>1,662</b>	<b>1,633</b>	<b>1,788</b>	<b>21,607</b>	
<b>% Change</b>	<b>-0.44%</b>	<b>-3.26%</b>	<b>-2.26%</b>	<b>8.75%</b>	<b>-1.97%</b>	<b>-11.32%</b>	<b>-2.83%</b>	<b>-9.20%</b>	<b>-2.86%</b>	<b>-2.29%</b>	<b>-12.12%</b>	<b>-22.71%</b>	<b>-5.44%</b>	
<b>2018 YTD</b>	<b>1,346</b>	<b>2,801</b>	<b>4,789</b>	<b>6,678</b>	<b>8,773</b>	<b>10,754</b>	<b>12,644</b>	<b>14,529</b>	<b>15,991</b>	<b>17,615</b>	<b>19,050</b>	<b>20,432</b>	<b>20,432</b>	
<b>2017 YTD</b>	<b>1,352</b>	<b>2,856</b>	<b>4,890</b>	<b>6,627</b>	<b>8,764</b>	<b>10,998</b>	<b>12,943</b>	<b>15,019</b>	<b>16,524</b>	<b>18,186</b>	<b>19,819</b>	<b>21,607</b>	<b>21,607</b>	
<b>% Change</b>	<b>-0.44%</b>	<b>-1.93%</b>	<b>-2.07%</b>	<b>0.77%</b>	<b>0.10%</b>	<b>-2.22%</b>	<b>-2.31%</b>	<b>-3.26%</b>	<b>-3.23%</b>	<b>-3.14%</b>	<b>-3.88%</b>	<b>-5.44%</b>	<b>-5.44%</b>	

### Monthly Average and Median Prices



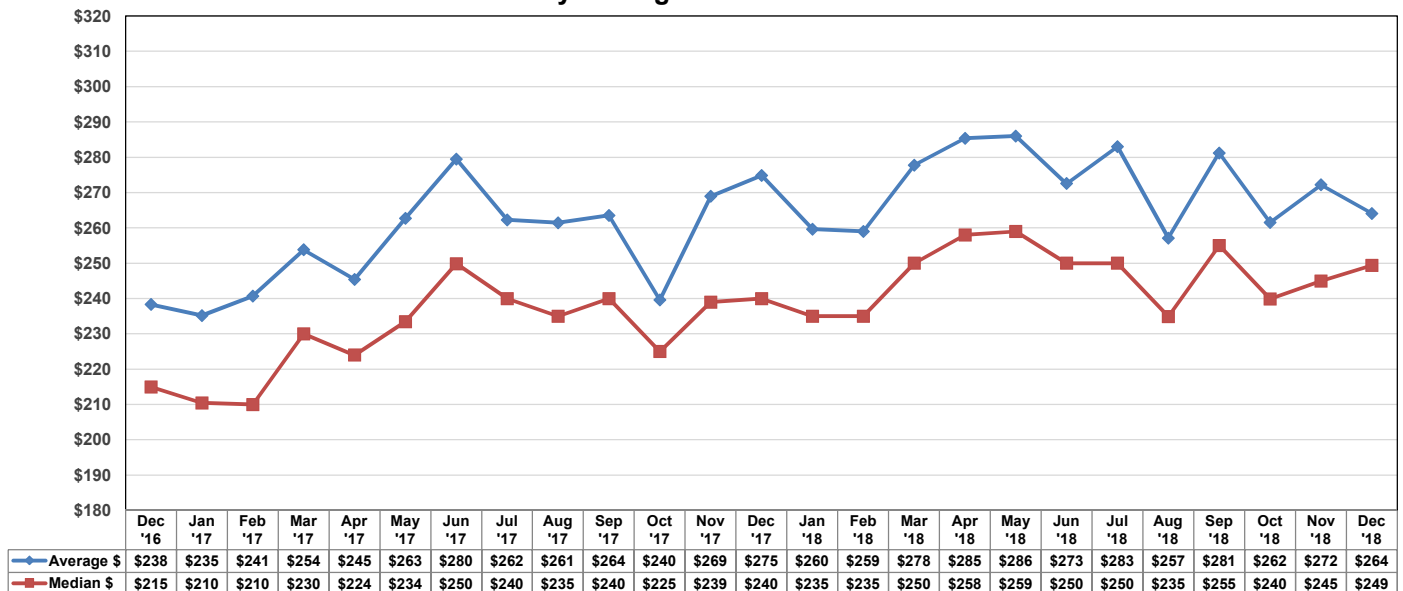


## MSA Sales by County Metropolitan Statistical Area 2018

### Seminole County

Sales Range	Jan *	Feb *	Mar *	Apr *	May *	Jun *	Jul *	Aug *	Sep *	Oct *	Nov *	Dec	Total	% Total
\$1 - \$24,999	0	1	0	0	0	0	1	0	0	0	0	1	3	0.04%
\$25,000 - \$49,999	5	4	5	4	1	1	1	4	0	0	0	1	26	0.33%
\$50,000 - \$59,999	6	3	5	2	4	3	4	2	2	4	0	1	36	0.45%
\$60,000 - \$69,999	5	4	13	7	17	5	6	11	5	4	4	2	83	1.04%
\$70,000 - \$79,999	9	18	11	13	12	8	13	9	13	15	5	9	135	1.70%
\$80,000 - \$89,999	11	8	11	13	8	15	6	21	9	10	7	14	133	1.67%
\$90,000 - \$99,999	7	11	7	10	10	11	8	13	9	13	8	3	110	1.38%
\$100,000 - \$119,999	21	21	23	18	18	21	19	24	12	17	12	14	220	2.77%
\$120,000 - \$139,999	28	17	32	26	34	30	27	38	31	26	22	21	332	4.18%
\$140,000 - \$159,999	25	32	36	37	37	35	41	39	26	44	31	29	412	5.19%
\$160,000 - \$179,999	28	23	45	33	41	38	51	36	31	36	45	34	441	5.55%
\$180,000 - \$199,999	23	45	36	32	62	54	52	57	29	39	22	40	491	6.18%
\$200,000 - \$249,999	99	108	144	128	137	165	169	182	137	132	131	94	1,626	20.47%
\$250,000 - \$299,999	77	87	128	126	125	139	137	117	110	103	104	109	1,362	17.15%
\$300,000 - \$349,999	47	49	81	82	99	85	81	79	67	66	50	59	845	10.64%
\$350,000 - \$399,999	20	40	46	42	74	57	46	58	51	44	37	31	546	6.87%
\$400,000 - \$499,999	40	30	61	71	72	64	70	39	65	51	48	31	642	8.08%
\$500,000 - \$599,999	11	14	23	29	27	24	38	19	19	15	13	18	250	3.15%
\$600,000 - \$699,999	6	5	16	11	15	11	14	10	8	8	4	6	114	1.44%
\$700,000 - \$799,999	3	6	5	6	8	3	7	6	4	2	8	2	60	0.76%
\$800,000 - \$899,999	0	1	4	3	6	3	2	2	4	4	0	3	32	0.40%
\$900,000 - \$999,999	2	1	2	0	0	2	1	0	0	0	1	1	10	0.13%
\$1.0M - \$1,499,999	0	3	5	4	2	0	3	0	3	2	3	1	26	0.33%
\$1.5M - \$1,999,999	0	0	0	1	2	1	0	2	0	0	0	0	6	0.08%
\$2.0M - \$4,999,999	2	0	0	0	0	0	1	0	0	0	0	0	3	0.04%
\$5.0M and above	0	0	0	0	0	0	0	0	0	0	0	0	0	0.00%
<b>2018</b>	<b>475</b>	<b>531</b>	<b>739</b>	<b>698</b>	<b>811</b>	<b>775</b>	<b>798</b>	<b>768</b>	<b>635</b>	<b>635</b>	<b>555</b>	<b>524</b>	<b>7,944</b>	<b>100.00%</b>
<b>2017</b>	<b>470</b>	<b>510</b>	<b>766</b>	<b>667</b>	<b>921</b>	<b>854</b>	<b>771</b>	<b>793</b>	<b>566</b>	<b>606</b>	<b>555</b>	<b>666</b>	<b>8,145</b>	
<b>% Change</b>	<b>1.06%</b>	<b>4.12%</b>	<b>-3.52%</b>	<b>4.65%</b>	<b>-11.94%</b>	<b>-9.25%</b>	<b>3.50%</b>	<b>-3.15%</b>	<b>12.19%</b>	<b>4.79%</b>	<b>0.00%</b>	<b>-21.32%</b>	<b>-2.47%</b>	
<b>2018 YTD</b>	<b>475</b>	<b>1,006</b>	<b>1,745</b>	<b>2,443</b>	<b>3,254</b>	<b>4,029</b>	<b>4,827</b>	<b>5,595</b>	<b>6,230</b>	<b>6,865</b>	<b>7,420</b>	<b>7,944</b>	<b>7,944</b>	
<b>2017 YTD</b>	<b>470</b>	<b>980</b>	<b>1,746</b>	<b>2,413</b>	<b>3,334</b>	<b>4,188</b>	<b>4,959</b>	<b>5,752</b>	<b>6,318</b>	<b>6,924</b>	<b>7,479</b>	<b>8,145</b>	<b>8,145</b>	
<b>% Change</b>	<b>1.06%</b>	<b>2.65%</b>	<b>-0.06%</b>	<b>1.24%</b>	<b>-2.40%</b>	<b>-3.80%</b>	<b>-2.66%</b>	<b>-2.73%</b>	<b>-1.39%</b>	<b>-0.85%</b>	<b>-0.79%</b>	<b>-2.47%</b>	<b>-2.47%</b>	

### Monthly Average and Median Prices



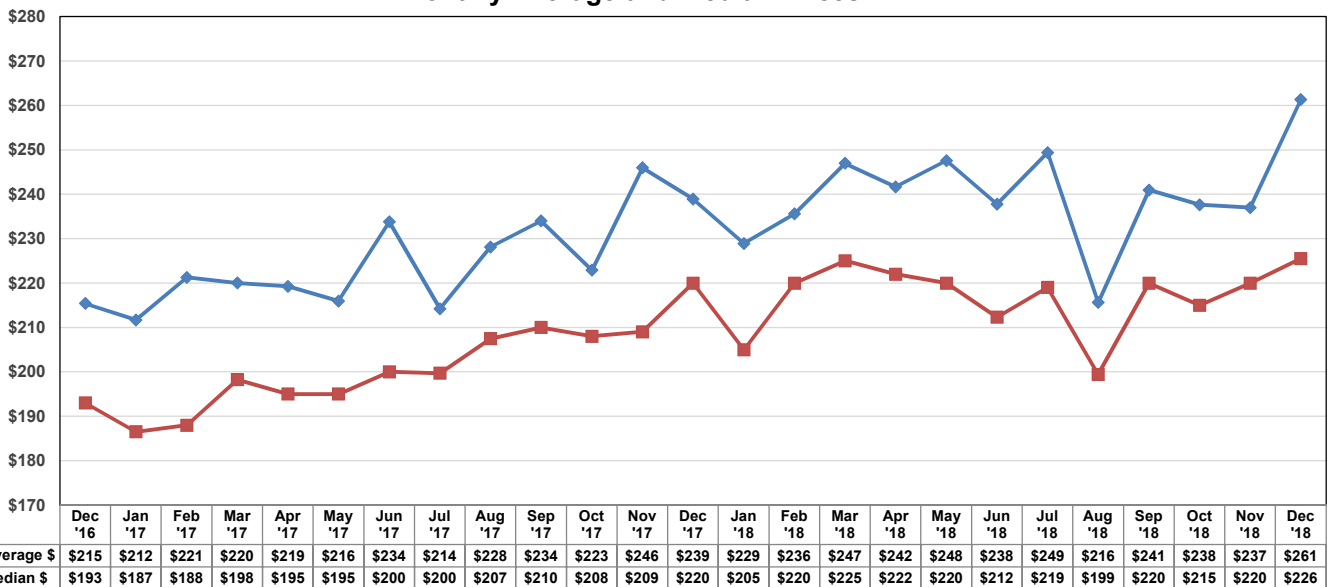


## MSA Sales by County Metropolitan Statistical Area 2018

### Osceola County

Sales Range	Jan *	Feb *	Mar *	Apr *	May *	Jun *	Jul *	Aug *	Sep *	Oct *	Nov *	Dec	Total	% Total
\$1 - \$24,999	0	0	0	0	0	0	0	0	0	0	0	0	0	0.00%
\$25,000 - \$49,999	3	3	2	5	1	0	1	0	0	1	0	0	16	0.22%
\$50,000 - \$59,999	0	2	1	0	5	3	2	5	1	1	1	1	22	0.30%
\$60,000 - \$69,999	3	6	5	3	2	5	3	4	3	3	3	0	40	0.55%
\$70,000 - \$79,999	3	2	2	3	4	1	3	4	7	4	3	2	38	0.53%
\$80,000 - \$89,999	3	6	10	4	6	4	7	11	2	5	8	0	66	0.91%
\$90,000 - \$99,999	6	6	6	7	11	12	9	10	7	5	5	4	88	1.22%
\$100,000 - \$119,999	26	25	22	30	15	30	14	23	9	16	14	10	234	3.24%
\$120,000 - \$139,999	34	26	29	32	40	40	24	40	34	27	29	23	378	5.24%
\$140,000 - \$159,999	38	51	51	40	36	41	36	63	32	34	36	27	485	6.72%
\$160,000 - \$179,999	54	56	58	64	76	71	64	71	39	50	51	35	689	9.54%
\$180,000 - \$199,999	56	49	65	74	90	69	62	67	72	73	60	58	795	11.01%
\$200,000 - \$249,999	104	117	194	198	227	207	177	157	157	188	143	125	1,994	27.62%
\$250,000 - \$299,999	73	108	115	117	109	80	79	71	90	93	80	75	1,090	15.10%
\$300,000 - \$349,999	29	44	62	62	61	46	48	23	39	37	42	44	537	7.44%
\$350,000 - \$399,999	17	14	24	26	27	17	21	17	18	18	31	27	257	3.56%
\$400,000 - \$499,999	13	27	26	10	33	21	14	20	24	17	17	18	240	3.32%
\$500,000 - \$599,999	9	8	21	10	13	10	11	1	7	5	5	11	111	1.54%
\$600,000 - \$699,999	3	3	5	5	8	5	5	1	3	4	2	1	45	0.62%
\$700,000 - \$799,999	2	3	1	2	3	3	4	1	6	5	4	2	36	0.50%
\$800,000 - \$899,999	1	0	1	2	2	1	3	1	0	0	0	2	13	0.18%
\$900,000 - \$999,999	1	1	1	2	0	2	2	3	0	1	0	0	13	0.18%
\$1.0M - \$1,499,999	1	0	3	2	4	2	6	1	1	3	1	0	24	0.33%
\$1.5M - \$1,999,999	0	0	0	2	0	1	0	0	0	0	0	1	4	0.06%
\$2.0M - \$4,999,999	0	0	0	0	1	1	0	0	0	0	0	2	4	0.06%
\$5.0M and above	0	0	0	0	0	0	0	0	0	0	0	0	0	0.00%
<b>2018</b>	<b>479</b>	<b>557</b>	<b>704</b>	<b>700</b>	<b>774</b>	<b>672</b>	<b>595</b>	<b>594</b>	<b>551</b>	<b>590</b>	<b>535</b>	<b>468</b>	<b>7,219</b>	<b>100.00%</b>
<b>2017</b>	<b>455</b>	<b>541</b>	<b>660</b>	<b>638</b>	<b>762</b>	<b>738</b>	<b>618</b>	<b>686</b>	<b>478</b>	<b>565</b>	<b>580</b>	<b>614</b>	<b>7,335</b>	
<b>% Change</b>	<b>5.27%</b>	<b>2.96%</b>	<b>6.67%</b>	<b>9.72%</b>	<b>1.57%</b>	<b>-8.94%</b>	<b>-3.72%</b>	<b>-13.41%</b>	<b>15.27%</b>	<b>4.42%</b>	<b>-7.76%</b>	<b>-23.78%</b>	<b>-1.58%</b>	
<b>2018 YTD</b>	<b>479</b>	<b>1,036</b>	<b>1,740</b>	<b>2,440</b>	<b>3,214</b>	<b>3,886</b>	<b>4,481</b>	<b>5,075</b>	<b>5,626</b>	<b>6,216</b>	<b>6,751</b>	<b>7,219</b>	<b>7,219</b>	
<b>2017 YTD</b>	<b>455</b>	<b>996</b>	<b>1,656</b>	<b>2,294</b>	<b>3,056</b>	<b>3,794</b>	<b>4,412</b>	<b>5,098</b>	<b>5,576</b>	<b>6,141</b>	<b>6,721</b>	<b>7,335</b>	<b>7,335</b>	
<b>% Change</b>	<b>5.27%</b>	<b>4.02%</b>	<b>5.07%</b>	<b>6.36%</b>	<b>5.17%</b>	<b>2.42%</b>	<b>1.56%</b>	<b>-0.45%</b>	<b>0.90%</b>	<b>1.22%</b>	<b>0.45%</b>	<b>-1.58%</b>	<b>-1.58%</b>	

### Monthly Average and Median Prices



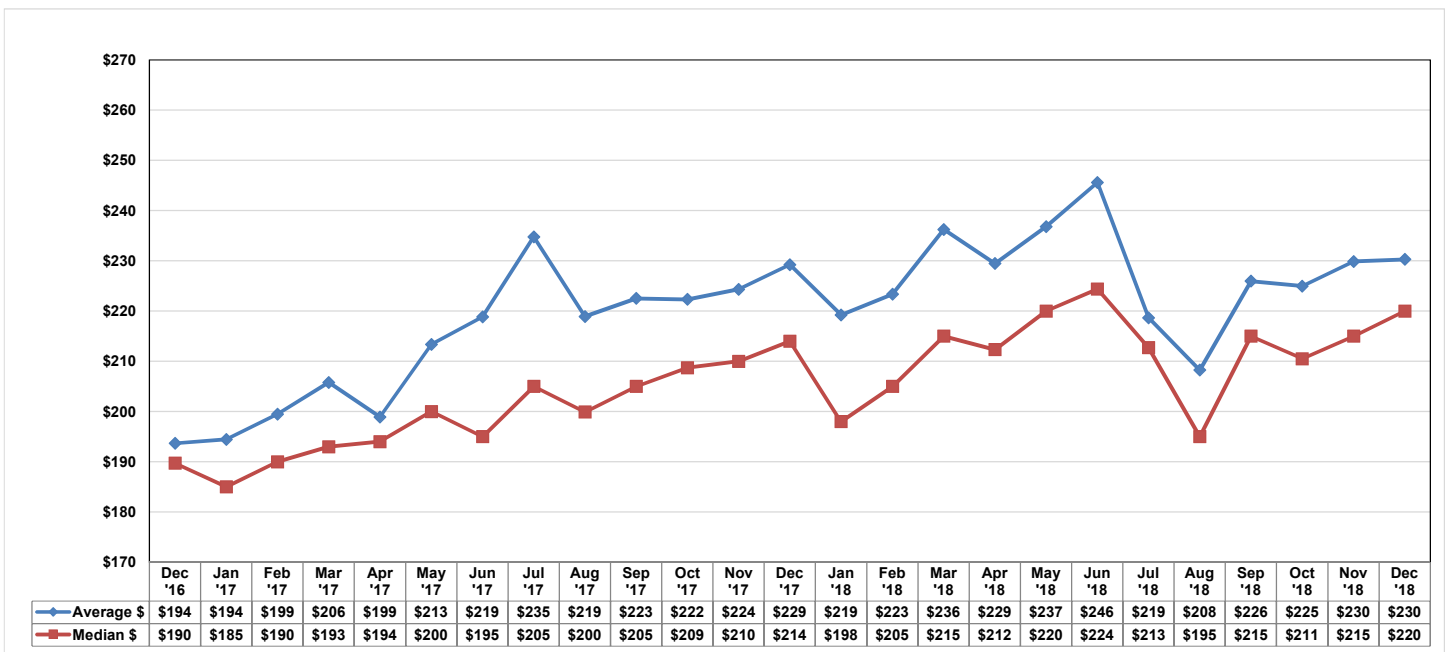


## MSA Sales by County Metropolitan Statistical Area 2018

### Lake County

Sales Range	Jan *	Feb *	Mar *	Apr *	May *	Jun *	Jul *	Aug *	Sep *	Oct *	Nov *	Dec	Total	% Total
\$1 - \$24,999	3	0	1	4	3	2	2	3	1	2	2	2	25	0.37%
\$25,000 - \$49,999	6	14	12	13	11	14	11	11	11	6	6	7	122	1.78%
\$50,000 - \$59,999	6	12	10	15	8	4	6	9	4	3	4	9	90	1.32%
\$60,000 - \$69,999	7	8	7	8	8	5	9	11	7	9	5	7	91	1.33%
\$70,000 - \$79,999	8	11	8	11	5	10	10	7	8	8	5	5	96	1.40%
\$80,000 - \$89,999	5	8	11	10	17	10	6	9	8	11	11	7	113	1.65%
\$90,000 - \$99,999	5	8	11	11	11	11	7	13	5	3	7	10	102	1.49%
\$100,000 - \$119,999	18	17	18	16	17	15	24	23	23	14	6	13	204	2.98%
\$120,000 - \$139,999	32	35	32	32	33	28	29	41	33	34	34	31	394	5.76%
\$140,000 - \$159,999	32	38	34	31	36	43	35	56	30	37	41	26	439	6.42%
\$160,000 - \$179,999	50	36	59	58	54	46	49	61	44	38	28	34	557	8.14%
\$180,000 - \$199,999	44	67	87	75	70	44	65	72	44	62	49	45	724	10.58%
\$200,000 - \$249,999	80	116	167	168	213	142	179	128	147	130	130	136	1,736	25.37%
\$250,000 - \$299,999	66	70	103	92	99	97	84	62	71	73	74	67	958	14.00%
\$300,000 - \$349,999	32	32	53	43	53	45	48	30	41	34	34	48	493	7.21%
\$350,000 - \$399,999	11	22	31	37	35	28	16	26	18	21	21	26	292	4.27%
\$400,000 - \$499,999	11	15	33	29	30	27	12	12	8	15	14	13	219	3.20%
\$500,000 - \$599,999	3	4	9	8	7	15	3	4	9	8	7	4	81	1.18%
\$600,000 - \$699,999	2	3	2	4	5	4	3	4	1	3	2	2	35	0.51%
\$700,000 - \$799,999	2	3	0	3	5	1	3	1	2	1	2	3	26	0.38%
\$800,000 - \$899,999	0	2	3	0	1	2	1	0	1	1	1	1	13	0.19%
\$900,000 - \$999,999	0	3	2	0	1	4	0	0	1	1	0	1	13	0.19%
\$1.0M - \$1,499,999	0	1	3	2	1	3	0	2	2	0	0	1	15	0.22%
\$1.5M - \$1,999,999	2	0	0	0	1	0	0	0	0	0	1	0	4	0.06%
\$2.0M - \$4,999,999	0	0	0	0	0	0	0	0	0	0	0	0	0	0.00%
\$5.0M and above	0	0	0	0	0	0	0	0	0	0	0	0	0	0.00%
<b>2018</b>	<b>425</b>	<b>525</b>	<b>696</b>	<b>670</b>	<b>724</b>	<b>600</b>	<b>602</b>	<b>585</b>	<b>519</b>	<b>514</b>	<b>484</b>	<b>498</b>	<b>6,842</b>	<b>100.00%</b>
<b>2017</b>	<b>457</b>	<b>465</b>	<b>725</b>	<b>675</b>	<b>697</b>	<b>688</b>	<b>679</b>	<b>665</b>	<b>483</b>	<b>568</b>	<b>551</b>	<b>636</b>	<b>7,289</b>	
<b>% Change</b>	<b>-7.00%</b>	<b>12.90%</b>	<b>-4.00%</b>	<b>-0.74%</b>	<b>3.87%</b>	<b>-12.79%</b>	<b>-11.34%</b>	<b>-12.03%</b>	<b>7.45%</b>	<b>-9.51%</b>	<b>-12.16%</b>	<b>-21.70%</b>	<b>-6.13%</b>	

<b>2018 YTD</b>	<b>425</b>	<b>950</b>	<b>1,646</b>	<b>2,316</b>	<b>3,040</b>	<b>3,640</b>	<b>4,242</b>	<b>4,827</b>	<b>5,346</b>	<b>5,860</b>	<b>6,344</b>	<b>6,842</b>	<b>6,842</b>
<b>2017 YTD</b>	<b>457</b>	<b>922</b>	<b>1,647</b>	<b>2,322</b>	<b>3,019</b>	<b>3,707</b>	<b>4,386</b>	<b>5,051</b>	<b>5,534</b>	<b>6,102</b>	<b>6,653</b>	<b>7,289</b>	<b>7,289</b>
<b>% Change</b>	<b>-7.00%</b>	<b>3.04%</b>	<b>-0.06%</b>	<b>-0.26%</b>	<b>0.70%</b>	<b>-1.81%</b>	<b>-3.28%</b>	<b>-4.43%</b>	<b>-3.40%</b>	<b>-3.97%</b>	<b>-4.64%</b>	<b>-6.13%</b>	<b>-6.13%</b>



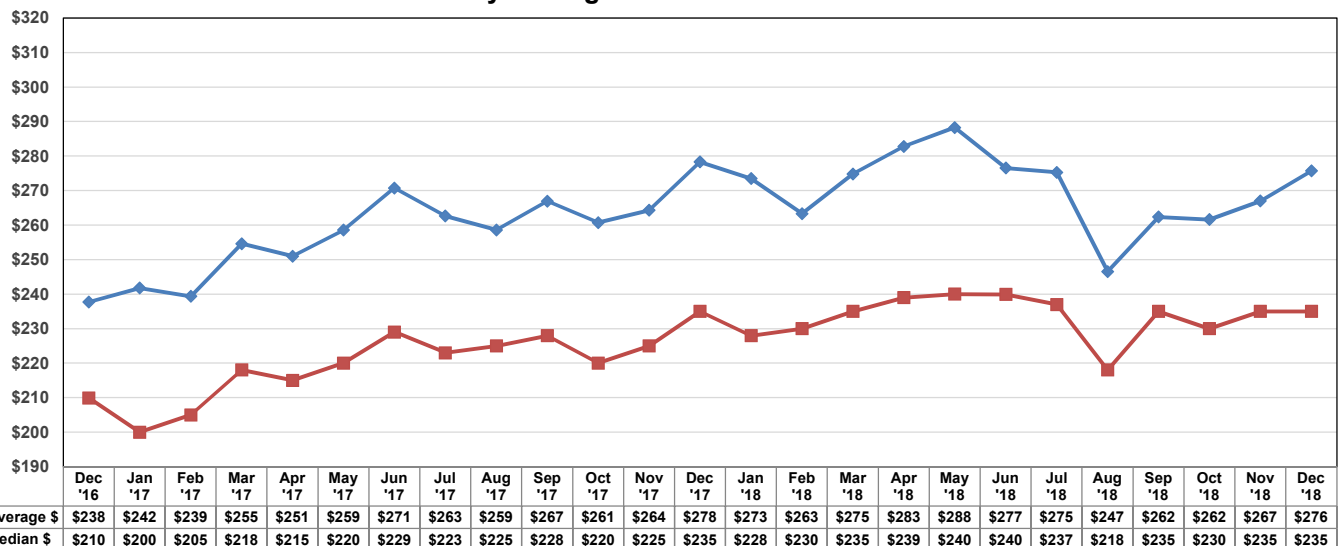


## MSA Sales by County Metropolitan Statistical Area 2018

### Lake, Orange, Osceola, and Seminole Counties

Sales Range	Jan *	Feb *	Mar *	Apr *	May *	Jun *	Jul *	Aug *	Sep *	Oct *	Nov *	Dec	Total	% Total
\$1 - \$24,999	4	2	1	4	3	3	5	5	2	4	4	3	40	0.09%
\$25,000 - \$49,999	29	37	34	36	25	29	22	35	32	16	13	17	325	0.77%
\$50,000 - \$59,999	30	34	35	30	28	29	26	34	18	18	16	21	319	0.75%
\$60,000 - \$69,999	43	42	49	35	53	38	31	54	31	31	24	18	449	1.06%
\$70,000 - \$79,999	34	59	54	41	49	36	42	57	46	53	41	34	546	1.29%
\$80,000 - \$89,999	53	46	61	57	57	62	47	79	55	50	48	47	662	1.56%
\$90,000 - \$99,999	43	49	69	54	65	57	57	86	42	58	45	42	667	1.57%
\$100,000 - \$119,999	115	117	139	123	116	130	128	165	97	118	90	90	1,428	3.36%
\$120,000 - \$139,999	174	147	190	178	178	188	162	231	175	162	139	147	2,071	4.88%
\$140,000 - \$159,999	150	192	226	197	197	226	203	250	174	199	194	155	2,363	5.57%
\$160,000 - \$179,999	199	195	270	254	266	255	258	274	182	220	192	178	2,743	6.46%
\$180,000 - \$199,999	203	238	306	289	345	280	290	342	212	255	221	233	3,214	7.57%
\$200,000 - \$249,999	520	590	873	843	957	842	905	828	729	775	679	624	9,165	21.60%
\$250,000 - \$299,999	418	495	660	631	667	648	591	540	507	531	496	484	6,668	15.71%
\$300,000 - \$349,999	249	290	399	420	475	420	392	304	300	332	273	288	4,142	9.76%
\$350,000 - \$399,999	123	191	219	242	291	255	227	200	194	167	189	172	2,470	5.82%
\$400,000 - \$499,999	144	167	247	244	302	250	210	167	200	185	171	155	2,442	5.75%
\$500,000 - \$599,999	69	62	128	97	131	125	101	65	78	66	63	64	1,049	2.47%
\$600,000 - \$699,999	39	26	52	59	63	47	63	36	30	39	35	29	518	1.22%
\$700,000 - \$799,999	27	31	30	36	44	30	38	23	23	21	32	19	354	0.83%
\$800,000 - \$899,999	12	15	24	19	22	21	24	16	13	20	10	12	208	0.49%
\$900,000 - \$999,999	10	15	13	12	6	18	21	15	8	11	6	5	140	0.33%
\$1.0M - \$1,499,999	17	18	28	32	29	24	32	15	11	24	14	14	258	0.61%
\$1.5M - \$1,999,999	7	7	12	11	20	6	6	4	6	6	10	9	104	0.25%
\$2.0M - \$4,999,999	11	3	7	12	13	8	4	7	2	2	4	10	83	0.20%
\$5.0M and above	2	0	1	1	2	1	0	0	0	0	0	2	9	0.02%
<b>2018</b>	<b>2,725</b>	<b>3,068</b>	<b>4,127</b>	<b>3,957</b>	<b>4,404</b>	<b>4,028</b>	<b>3,885</b>	<b>3,832</b>	<b>3,167</b>	<b>3,363</b>	<b>3,009</b>	<b>2,872</b>	<b>42,437</b>	<b>100.00%</b>
<b>2017</b>	<b>2,734</b>	<b>3,020</b>	<b>4,185</b>	<b>3,717</b>	<b>4,517</b>	<b>4,514</b>	<b>4,013</b>	<b>4,220</b>	<b>3,032</b>	<b>3,401</b>	<b>3,319</b>	<b>3,704</b>	<b>44,376</b>	
<b>% Change</b>	<b>-0.33%</b>	<b>1.59%</b>	<b>-1.39%</b>	<b>6.46%</b>	<b>-2.50%</b>	<b>-10.77%</b>	<b>-3.19%</b>	<b>-9.19%</b>	<b>4.45%</b>	<b>-1.12%</b>	<b>-9.34%</b>	<b>-22.46%</b>	<b>-4.37%</b>	
<b>2018 YTD</b>	<b>2,725</b>	<b>5,793</b>	<b>9,920</b>	<b>13,877</b>	<b>18,281</b>	<b>22,309</b>	<b>26,194</b>	<b>30,026</b>	<b>33,193</b>	<b>36,556</b>	<b>39,565</b>	<b>42,437</b>	<b>42,437</b>	
<b>2017 YTD</b>	<b>2,734</b>	<b>5,754</b>	<b>9,939</b>	<b>13,656</b>	<b>18,173</b>	<b>22,687</b>	<b>26,700</b>	<b>30,920</b>	<b>33,952</b>	<b>37,353</b>	<b>40,672</b>	<b>44,376</b>	<b>44,376</b>	
<b>% Change</b>	<b>-0.33%</b>	<b>0.68%</b>	<b>-0.19%</b>	<b>1.62%</b>	<b>0.59%</b>	<b>-1.67%</b>	<b>-1.90%</b>	<b>-2.89%</b>	<b>-2.24%</b>	<b>-2.13%</b>	<b>-2.72%</b>	<b>-4.37%</b>	<b>-4.37%</b>	

### Monthly Average and Median Prices



This data represents single-family attached and detached sales. Reported sales are dependent upon timeliness of sales and totality of information reported by participants. The data reflects only the sales published through My Florida Regional MLS and does not include all sales in the reported areas. Neither the Association nor the MFRMLS is in any way responsible for its accuracy.