

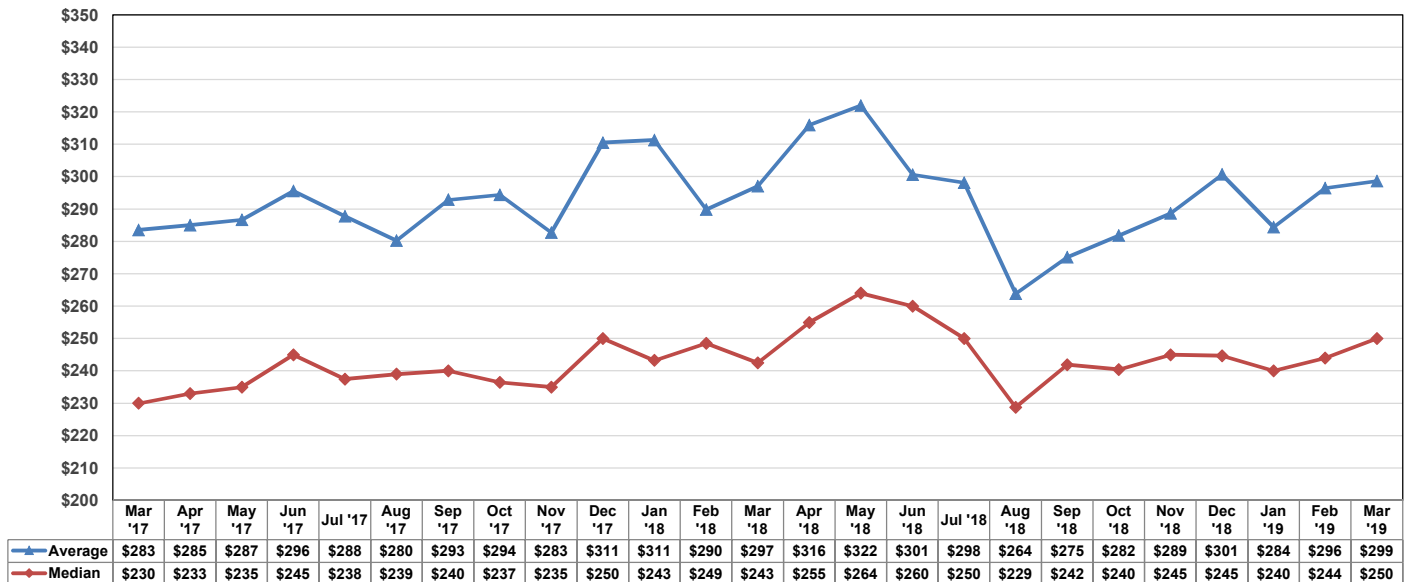


MSA Sales by County Metropolitan Statistical Area 2019

Orange County

Sales Range	Jan *	Feb *	Mar	Apr	May	Jun	Jul	Aug	Sep	Oct	Nov	Dec	Total	% Total
\$1 - \$24,999	0	1	3										4	0.10%
\$25,000 - \$49,999	14	7	1										22	0.53%
\$50,000 - \$59,999	11	5	12										28	0.67%
\$60,000 - \$69,999	15	12	11										38	0.91%
\$70,000 - \$79,999	18	17	20										55	1.32%
\$80,000 - \$89,999	19	25	20										64	1.53%
\$90,000 - \$99,999	16	18	29										63	1.51%
\$100,000 - \$119,999	37	50	70										157	3.76%
\$120,000 - \$139,999	55	61	69										185	4.44%
\$140,000 - \$159,999	66	79	81										226	5.42%
\$160,000 - \$179,999	63	85	84										232	5.56%
\$180,000 - \$199,999	70	97	102										269	6.45%
\$200,000 - \$249,999	218	262	338										818	19.62%
\$250,000 - \$299,999	151	214	259										624	14.96%
\$300,000 - \$349,999	114	146	201										461	11.06%
\$350,000 - \$399,999	69	80	133										282	6.76%
\$400,000 - \$499,999	77	85	117										279	6.69%
\$500,000 - \$599,999	29	37	52										118	2.83%
\$600,000 - \$699,999	22	25	29										76	1.82%
\$700,000 - \$799,999	10	18	20										48	1.15%
\$800,000 - \$899,999	8	9	13										30	0.72%
\$900,000 - \$999,999	7	6	6										19	0.46%
\$1.0M - \$1,499,999	13	15	15										43	1.03%
\$1.5M - \$1,999,999	2	7	3										12	0.29%
\$2.0M - \$4,999,999	3	6	8										17	0.41%
\$5.0M and above	0	0	0										0	0.00%
2019	1,107	1,367	1,696	0	0	0	0	0	0	0	0	0	4,170	100.00%
2018	1,346	1,455	1,988	1,889	2,095	1,981	1,890	1,885	1,462	1,624	1,435	1,388	4,789	
% Change	-17.76%	-6.05%	-14.69%	0.00%	0.00%	0.00%	0.00%	0.00%	0.00%	0.00%	0.00%	0.00%	-12.93%	
2019 YTD	1,107	2,474	4,170	0	0	0	0	0	0	0	0	0	4,170	
2018 YTD	1,346	2,801	4,789	6,678	8,773	10,754	12,644	14,529	15,991	17,615	19,050	20,438	4,789	
% Change	-17.76%	-11.67%	-12.93%	0.00%	0.00%	0.00%	0.00%	0.00%	0.00%	0.00%	0.00%	0.00%	-12.93%	

Monthly Average and Median Prices



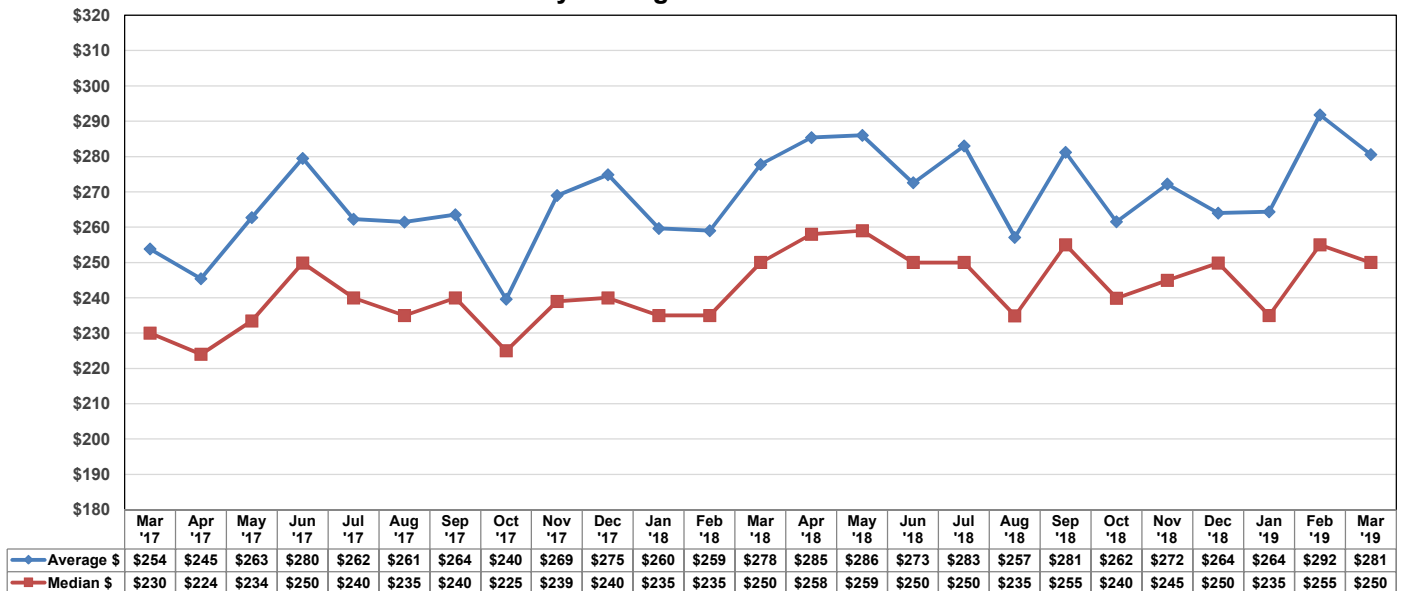


MSA Sales by County Metropolitan Statistical Area 2019

Seminole County

Sales Range	Jan *	Feb *	Mar	Apr	May	Jun	Jul	Aug	Sep	Oct	Nov	Dec	Total	% Total
\$1 - \$24,999	0	0	0										0	0.00%
\$25,000 - \$49,999	0	0	1										1	0.06%
\$50,000 - \$59,999	3	2	2										7	0.43%
\$60,000 - \$69,999	6	3	10										19	1.16%
\$70,000 - \$79,999	9	6	10										25	1.52%
\$80,000 - \$89,999	13	5	11										29	1.77%
\$90,000 - \$99,999	12	5	8										25	1.52%
\$100,000 - \$119,999	16	22	21										59	3.60%
\$120,000 - \$139,999	20	17	16										53	3.23%
\$140,000 - \$159,999	20	29	32										81	4.94%
\$160,000 - \$179,999	29	32	38										99	6.03%
\$180,000 - \$199,999	29	35	40										104	6.34%
\$200,000 - \$249,999	83	90	152										325	19.80%
\$250,000 - \$299,999	77	91	115										283	17.25%
\$300,000 - \$349,999	45	69	85										199	12.13%
\$350,000 - \$399,999	26	38	50										114	6.95%
\$400,000 - \$499,999	20	47	49										116	7.07%
\$500,000 - \$599,999	10	11	20										41	2.50%
\$600,000 - \$699,999	7	3	5										15	0.91%
\$700,000 - \$799,999	7	2	5										14	0.85%
\$800,000 - \$899,999	1	1	4										6	0.37%
\$900,000 - \$999,999	1	1	5										7	0.43%
\$1.0M - \$1,499,999	3	6	6										15	0.91%
\$1.5M - \$1,999,999	1	0	0										1	0.06%
\$2.0M - \$4,999,999	0	3	0										3	0.18%
\$5.0M and above	0	0	0										0	0.00%
2019	438	518	685	0	0	0	0	0	0	0	0	0	1,641	100.00%
2018	475	531	739	698	811	775	798	768	635	635	555	527	1,745	
% Change	-7.79%	-2.45%	-7.31%	0.00%	0.00%	0.00%	0.00%	0.00%	0.00%	0.00%	0.00%	0.00%	-5.96%	
2019 YTD	438	956	1,641	0	0	0	0	0	0	0	0	0	1,641	
2018 YTD	475	1,006	1,745	2,443	3,254	4,029	4,827	5,595	6,230	6,865	7,420	7,947	1,745	
% Change	-7.79%	-4.97%	-5.96%	0.00%	0.00%	0.00%	0.00%	0.00%	0.00%	0.00%	0.00%	0.00%	-5.96%	

Monthly Average and Median Prices



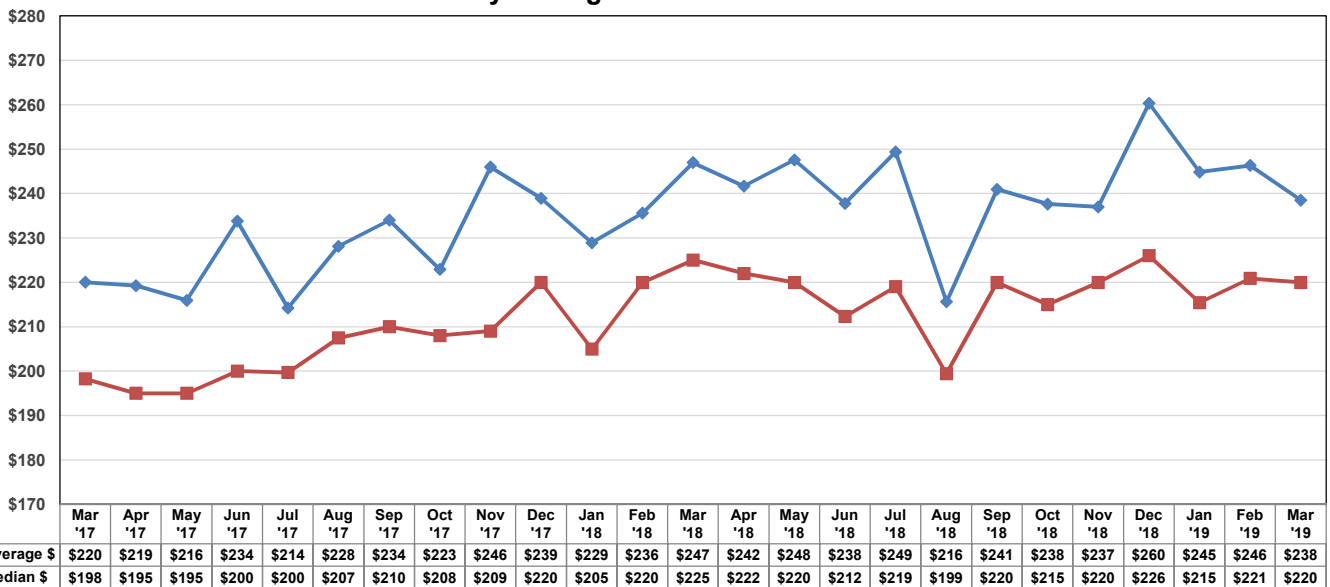


MSA Sales by County Metropolitan Statistical Area 2019

Osceola County

Sales Range	Jan *	Feb *	Mar	Apr	May	Jun	Jul	Aug	Sep	Oct	Nov	Dec	Total	% Total
\$1 - \$24,999	0	0	0										0	0.00%
\$25,000 - \$49,999	2	1	6										9	0.62%
\$50,000 - \$59,999	4	0	3										7	0.48%
\$60,000 - \$69,999	2	3	3										8	0.55%
\$70,000 - \$79,999	0	6	3										9	0.62%
\$80,000 - \$89,999	6	6	5										17	1.17%
\$90,000 - \$99,999	5	6	4										15	1.03%
\$100,000 - \$119,999	18	17	14										49	3.37%
\$120,000 - \$139,999	25	17	35										77	5.30%
\$140,000 - \$159,999	27	22	30										79	5.44%
\$160,000 - \$179,999	32	42	61										135	9.30%
\$180,000 - \$199,999	38	38	66										142	9.78%
\$200,000 - \$249,999	117	135	189										441	30.37%
\$250,000 - \$299,999	49	51	85										185	12.74%
\$300,000 - \$349,999	23	39	41										103	7.09%
\$350,000 - \$399,999	14	18	37										69	4.75%
\$400,000 - \$499,999	11	20	19										50	3.44%
\$500,000 - \$599,999	11	12	9										32	2.20%
\$600,000 - \$699,999	3	5	3										11	0.76%
\$700,000 - \$799,999	1	1	1										3	0.21%
\$800,000 - \$899,999	0	1	3										4	0.28%
\$900,000 - \$999,999	0	1	0										1	0.07%
\$1.0M - \$1,499,999	3	1	1										5	0.34%
\$1.5M - \$1,999,999	0	0	0										0	0.00%
\$2.0M - \$4,999,999	1	0	0										1	0.07%
\$5.0M and above	0	0	0										0	0.00%
2019	392	442	618	0	0	0	0	0	0	0	0	0	1,452	100.00%
2018	479	557	704	700	774	672	595	594	551	590	535	469	1,740	
% Change	-18.16%	-20.65%	-12.22%	0.00%	0.00%	0.00%	0.00%	0.00%	0.00%	0.00%	0.00%	0.00%	-16.55%	
2019 YTD	392	834	1,452	0	0	0	0	0	0	0	0	0	1,452	
2018 YTD	479	1,036	1,740	2,440	3,214	3,886	4,481	5,075	5,626	6,216	6,751	7,220	1,740	
% Change	-18.16%	-19.50%	-16.55%	0.00%	0.00%	0.00%	0.00%	0.00%	0.00%	0.00%	0.00%	0.00%	-16.55%	

Monthly Average and Median Prices



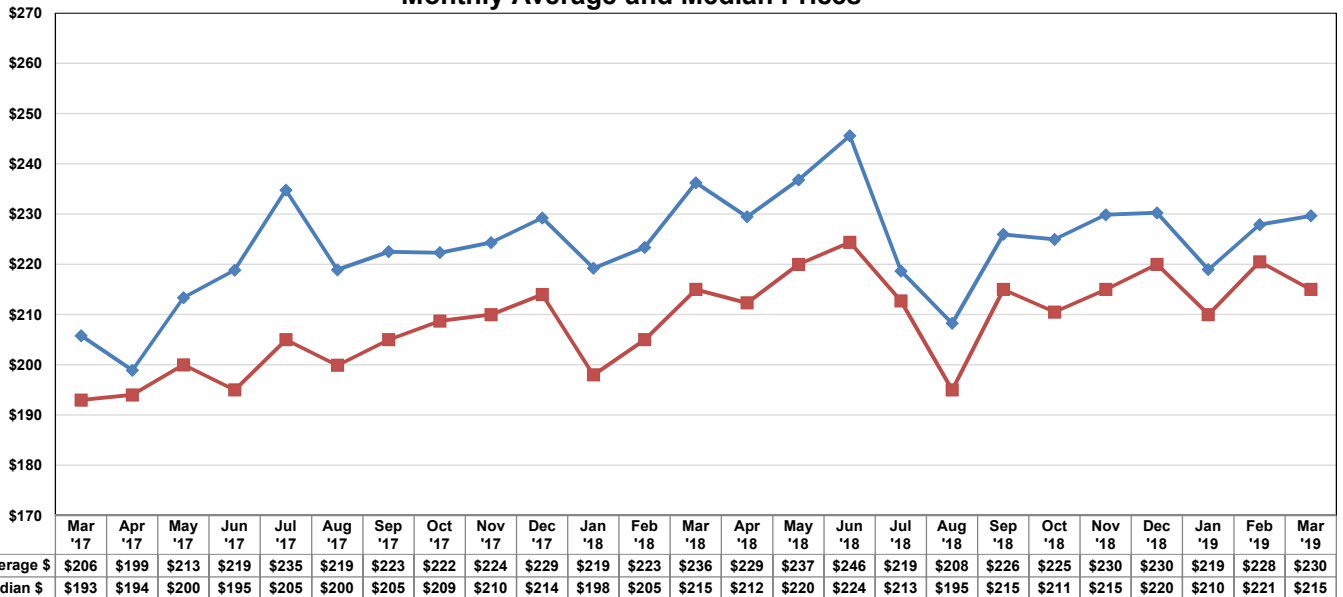


MSA Sales by County Metropolitan Statistical Area 2019

Lake County

Sales Range	Jan *	Feb *	Mar	Apr	May	Jun	Jul	Aug	Sep	Oct	Nov	Dec	Total	% Total
\$1 - \$24,999	2	2	1										5	0.35%
\$25,000 - \$49,999	8	11	14										33	2.29%
\$50,000 - \$59,999	7	0	8										15	1.04%
\$60,000 - \$69,999	8	6	7										21	1.46%
\$70,000 - \$79,999	7	3	7										17	1.18%
\$80,000 - \$89,999	9	6	4										19	1.32%
\$90,000 - \$99,999	10	13	19										42	2.91%
\$100,000 - \$119,999	22	14	23										59	4.09%
\$120,000 - \$139,999	21	32	32										85	5.89%
\$140,000 - \$159,999	28	19	35										82	5.69%
\$160,000 - \$179,999	28	30	45										103	7.14%
\$180,000 - \$199,999	29	42	50										121	8.39%
\$200,000 - \$249,999	102	112	165										379	26.28%
\$250,000 - \$299,999	50	66	73										189	13.11%
\$300,000 - \$349,999	26	39	51										116	8.04%
\$350,000 - \$399,999	17	24	22										63	4.37%
\$400,000 - \$499,999	21	16	28										65	4.51%
\$500,000 - \$599,999	3	6	5										14	0.97%
\$600,000 - \$699,999	1	2	4										7	0.49%
\$700,000 - \$799,999	1	1	0										2	0.14%
\$800,000 - \$899,999	0	0	2										2	0.14%
\$900,000 - \$999,999	0	0	1										1	0.07%
\$1.0M - \$1,499,999	1	0	0										1	0.07%
\$1.5M - \$1,999,999	0	0	0										0	0.00%
\$2.0M - \$4,999,999	0	0	1										1	0.07%
\$5.0M and above	0	0	0										0	0.00%
2019	401	444	597	0	0	0	0	0	0	0	0	0	1,442	100.00%
2018	425	525	696	670	724	600	602	585	519	514	484	499	1,646	
% Change	-5.65%	-15.43%	-14.22%	0.00%	0.00%	0.00%	0.00%	0.00%	0.00%	0.00%	0.00%	0.00%	-12.39%	
2019 YTD	401	845	1,442	0	0	0	0	0	0	0	0	0	1,442	
2018 YTD	425	950	1,646	2,316	3,040	3,640	4,242	4,827	5,346	5,860	6,344	6,843	1,646	
% Change	-5.65%	-11.05%	-12.39%	0.00%	0.00%	0.00%	0.00%	0.00%	0.00%	0.00%	0.00%	0.00%	-12.39%	

Monthly Average and Median Prices



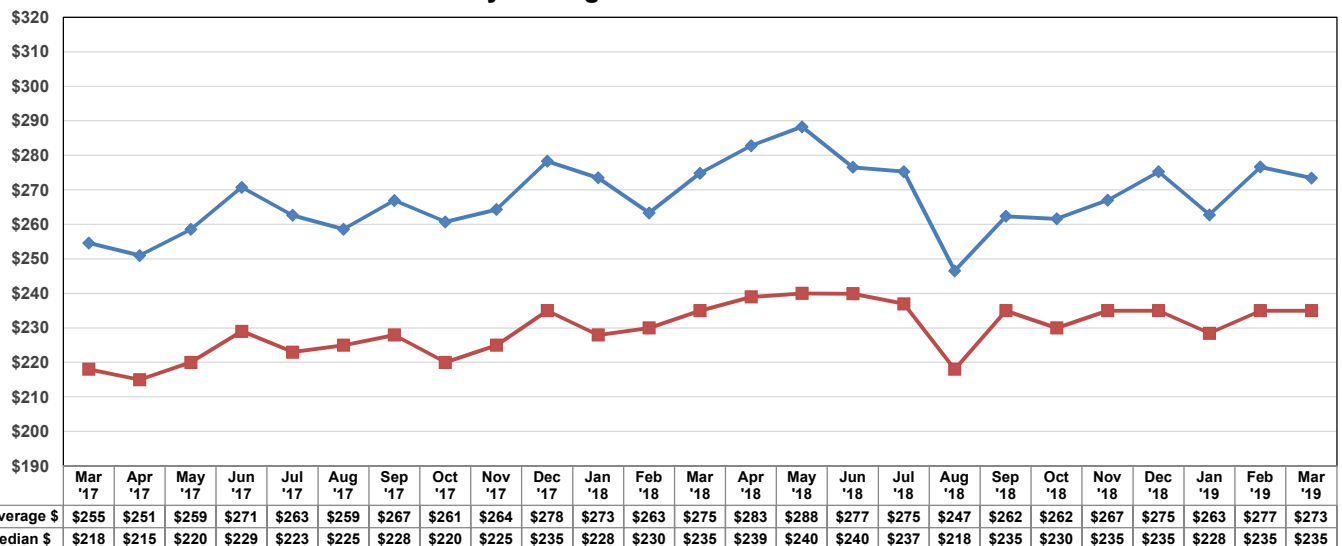


MSA Sales by County Metropolitan Statistical Area 2019

Lake, Orange, Osceola, and Seminole Counties

Sales Range	Jan *	Feb *	Mar	Apr	May	Jun	Jul	Aug	Sep	Oct	Nov	Dec	Total	% Total
\$1 - \$24,999	2	3	4	0	0	0	0	0	0	0	0	0	9	0.10%
\$25,000 - \$49,999	24	19	22	0	0	0	0	0	0	0	0	0	65	0.75%
\$50,000 - \$59,999	25	7	25	0	0	0	0	0	0	0	0	0	57	0.65%
\$60,000 - \$69,999	31	24	31	0	0	0	0	0	0	0	0	0	86	0.99%
\$70,000 - \$79,999	34	32	40	0	0	0	0	0	0	0	0	0	106	1.22%
\$80,000 - \$89,999	47	42	40	0	0	0	0	0	0	0	0	0	129	1.48%
\$90,000 - \$99,999	43	42	60	0	0	0	0	0	0	0	0	0	145	1.67%
\$100,000 - \$119,999	93	103	128	0	0	0	0	0	0	0	0	0	324	3.72%
\$120,000 - \$139,999	121	127	152	0	0	0	0	0	0	0	0	0	400	4.60%
\$140,000 - \$159,999	141	149	178	0	0	0	0	0	0	0	0	0	468	5.38%
\$160,000 - \$179,999	152	189	228	0	0	0	0	0	0	0	0	0	569	6.54%
\$180,000 - \$199,999	166	212	258	0	0	0	0	0	0	0	0	0	636	7.31%
\$200,000 - \$249,999	520	599	844	0	0	0	0	0	0	0	0	0	1,963	22.55%
\$250,000 - \$299,999	327	422	532	0	0	0	0	0	0	0	0	0	1,281	14.72%
\$300,000 - \$349,999	208	293	378	0	0	0	0	0	0	0	0	0	879	10.10%
\$350,000 - \$399,999	126	160	242	0	0	0	0	0	0	0	0	0	528	6.07%
\$400,000 - \$499,999	129	168	213	0	0	0	0	0	0	0	0	0	510	5.86%
\$500,000 - \$599,999	53	66	86	0	0	0	0	0	0	0	0	0	205	2.35%
\$600,000 - \$699,999	33	35	41	0	0	0	0	0	0	0	0	0	109	1.25%
\$700,000 - \$799,999	19	22	26	0	0	0	0	0	0	0	0	0	67	0.77%
\$800,000 - \$899,999	9	11	22	0	0	0	0	0	0	0	0	0	42	0.48%
\$900,000 - \$999,999	8	8	12	0	0	0	0	0	0	0	0	0	28	0.32%
\$1.0M - \$1,499,999	20	22	22	0	0	0	0	0	0	0	0	0	64	0.74%
\$1.5M - \$1,999,999	3	7	3	0	0	0	0	0	0	0	0	0	13	0.15%
\$2.0M - \$4,999,999	4	9	9	0	0	0	0	0	0	0	0	0	22	0.25%
\$5.0M and above	0	0	0	0	0	0	0	0	0	0	0	0	0	0.00%
2019	2,338	2,771	3,596	0	0	0	0	0	0	0	0	0	8,705	100.00%
2018	2,725	3,068	4,127	3,957	4,404	4,028	3,885	3,832	3,167	3,363	3,009	2,883	9,920	
% Change	-14.20%	-9.68%	-12.87%	0.00%	0.00%	0.00%	0.00%	0.00%	0.00%	0.00%	0.00%	0.00%	-12.25%	
2019 YTD	2,338	5,109	8,705	0	0	0	0	0	0	0	0	0	8,705	
2018 YTD	2,725	5,793	9,920	13,877	18,281	22,309	26,194	30,026	33,193	36,556	39,565	42,448	9,920	
% Change	-14.20%	-11.81%	-12.25%	0.00%	0.00%	0.00%	0.00%	0.00%	0.00%	0.00%	0.00%	0.00%	-12.25%	

Monthly Average and Median Prices



This data represents single-family attached and detached sales. Reported sales are dependent upon timeliness of sales and totality of information reported by participants. The data reflects only the sales published through My Florida Regional MLS and does not include all sales in the reported areas. Neither the Association nor the MFRMLS is in any way responsible for its accuracy.