



# MARKET PULSE



ORLANDO REGIONAL  
**REALTOR**<sup>®</sup>  
ASSOCIATION



July 2018

ORRA Originated Sales	Average Mtg Rate	Total Inventory **	Active With Contract	New Listings	New Contracts	Under Contract	Back on Market	Expired	Withdrawn	Sales Closed	Days on Market
Jun '16	3.45%	10,629	1,147	4,208	2,684	5,512	381	272	726	3,556 *	62 *
Jul '16	3.45%	10,648	1,166	3,965	2,535	5,178	424	258	779	3,353 *	60 *
Aug '16	3.49%	10,505	1,120	4,090	2,555	4,955	412	260	903	3,451 *	56 *
Sept '16	3.53%	10,362	1,047	3,695	2,179	4,594	360	284	850	3,110 *	60 *
Oct '16	3.57%	10,025	629	3,245	2,271	4,719	368	286	754	2,701 *	61 *
Nov '16	3.82%	9,270	164	3,198	2,713	5,122	369	261	818	2,523 *	66 *
Dec '16	4.32%	8,590	0	2,623	2,223	4,476	378	418	708	2,997 *	65 *
Jan '17	4.30%	8,550	0	3,580	3,015	5,145	372	240	709	2,213 *	70 *
Feb '17	4.29%	8,457	0	3,826	3,281	5,849	380	232	639	2,482 *	69 *
Mar '17	4.29%	8,537	0	4,612	3,687	6,125	421	181	758	3,477 *	64 *
Apr '17	4.11%	8,675	0	4,333	3,713	6,461	472	159	612	3,092 *	63 *
May '17	4.09%	8,781	0	4,670	3,750	6,524	475	190	806	3,845 *	54 *
Jun '17	3.98%	9,141	0	4,629	3,421	5,886	482	219	702	3,882 *	54 *
Jul '17	4.01%	9,051	0	4,080	3,460	5,819	521	221	774	3,381 *	52 *
Aug '17	3.92%	8,833	0	4,107	3,431	5,666	492	248	826	3,580 *	54 *
Sept '17	3.84%	8,643	0	2,534	2,098	4,881	409	268	597	2,552 *	57 *
Oct '17	4.03%	8,464	0	3,499	2,604	4,953	394	175	750	2,921 *	56 *
Nov '17	3.96%	8,294	0	3,189	2,658	4,829	365	166	714	2,767 *	62 *
Dec '17	3.97%	7,508	0	2,554	2,246	3,792	365	395	626	3,045 *	62 *
Jan '18	4.07%	7,604	0	3,752	3,036	4,801	381	256	633	2,250 *	62 *
Feb '18	4.39%	7,706	0	3,861	3,225	5,523	429	183	545	2,538 *	64 *
Mar '18	4.29%	7,710	0	4,468	3,710	5,724	427	210	602	3,530 *	60 *
Apr '18	4.51%	7,740	0	4,278	3,707	6,241	430	223	545	3,371 *	54 *
May '18	4.64%	7,486	0	4,388	3,587	5,778	481	159	603	3,426 *	50 *
Jun '18	4.61%	7,558	0	4,128	3,188	5,206	655	186	611	3,451	48
ORRA Originated Sales	Average Mtg Rate	Total Inventory **	Active With Contract	New Listings	New Contracts	Under Contract	Back on Market	Expired	Withdrawn	Sales Closed	Days on Market

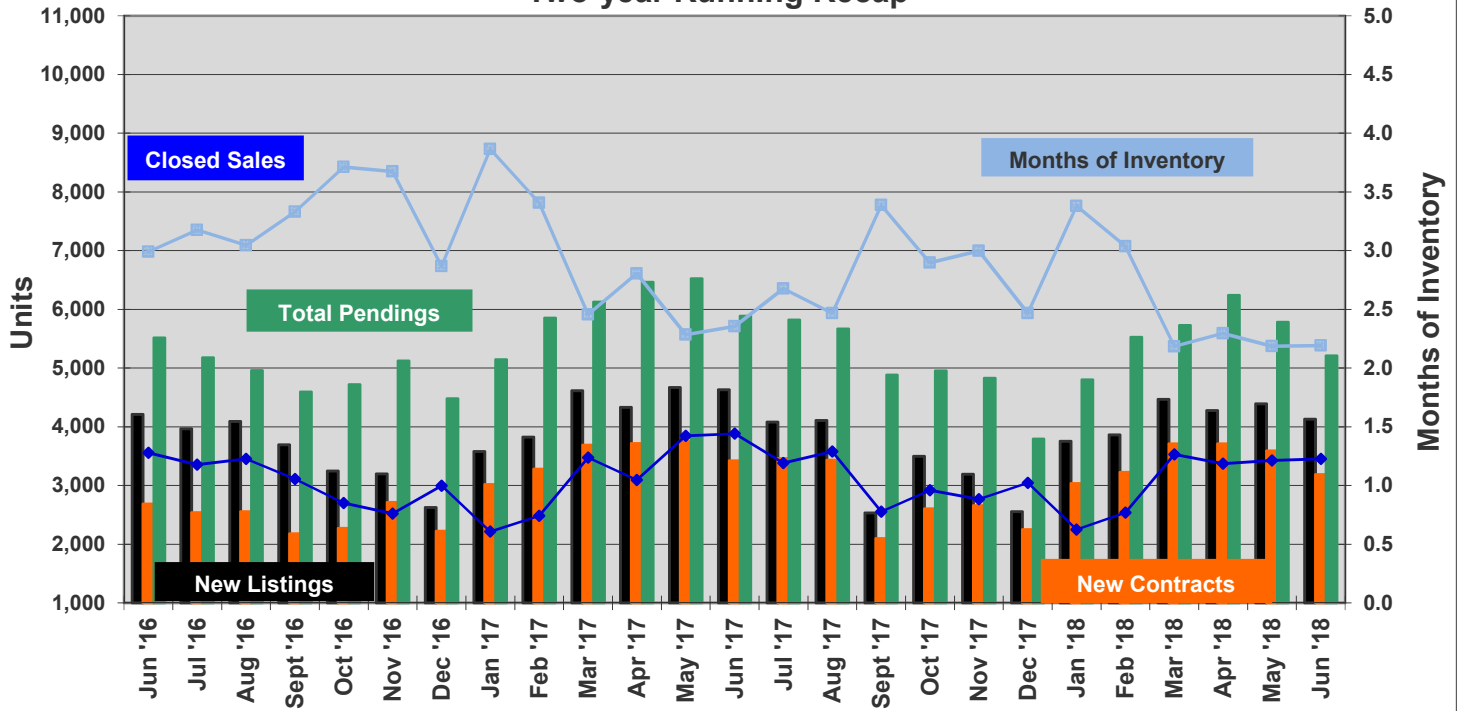
\* Corrected monthly sales. \*\* No longer includes listings with a status of "Active with Contract" (Discontinued in December 2016).

Complete stats and data may be found under Market Info at [www.orlandorealtors.org](http://www.orlandorealtors.org). Comments or suggestions? Contact Mike Blinn, Statistician.

Market Pulse™ data represents all listings taken or sold by ORRA brokers, regardless of location and is exclusive to residential property, which includes townhomes, duplexes, single-family homes, and condos. It does not include vacant land or commercial transactions.

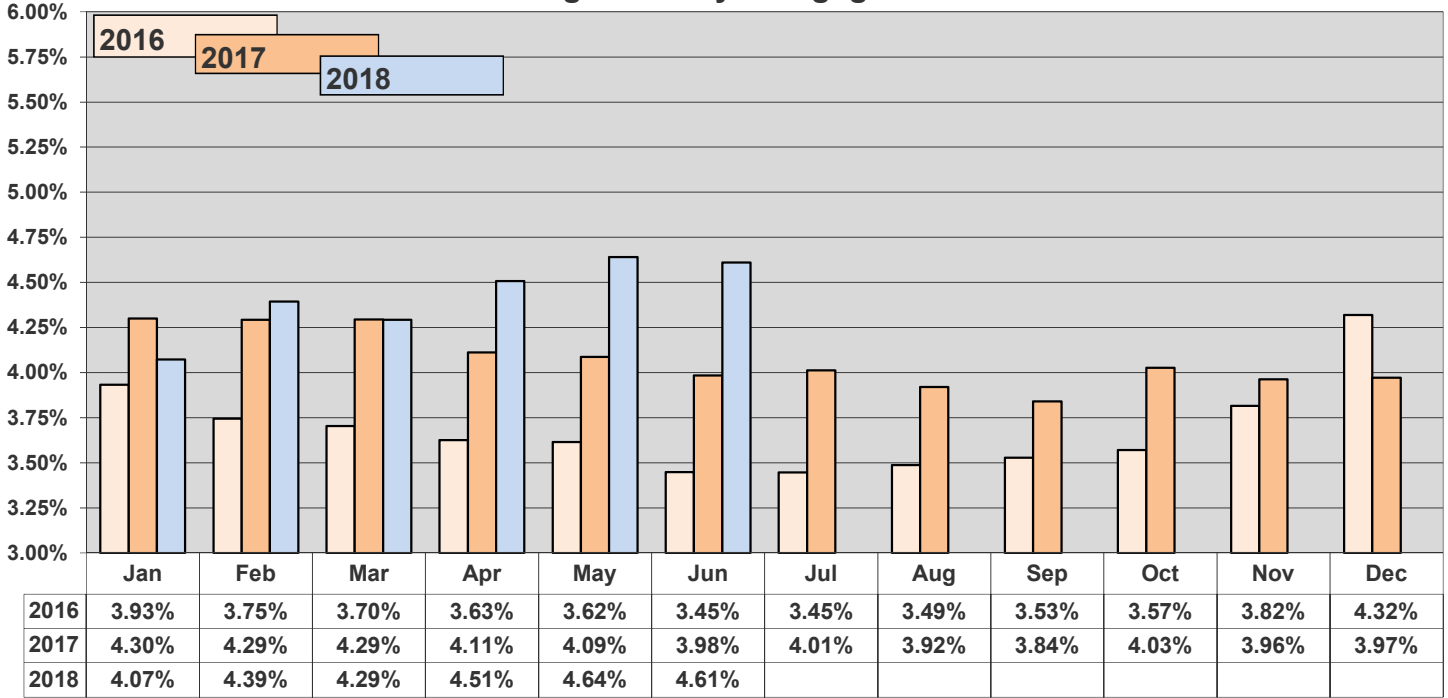


### Two-year Running Recap

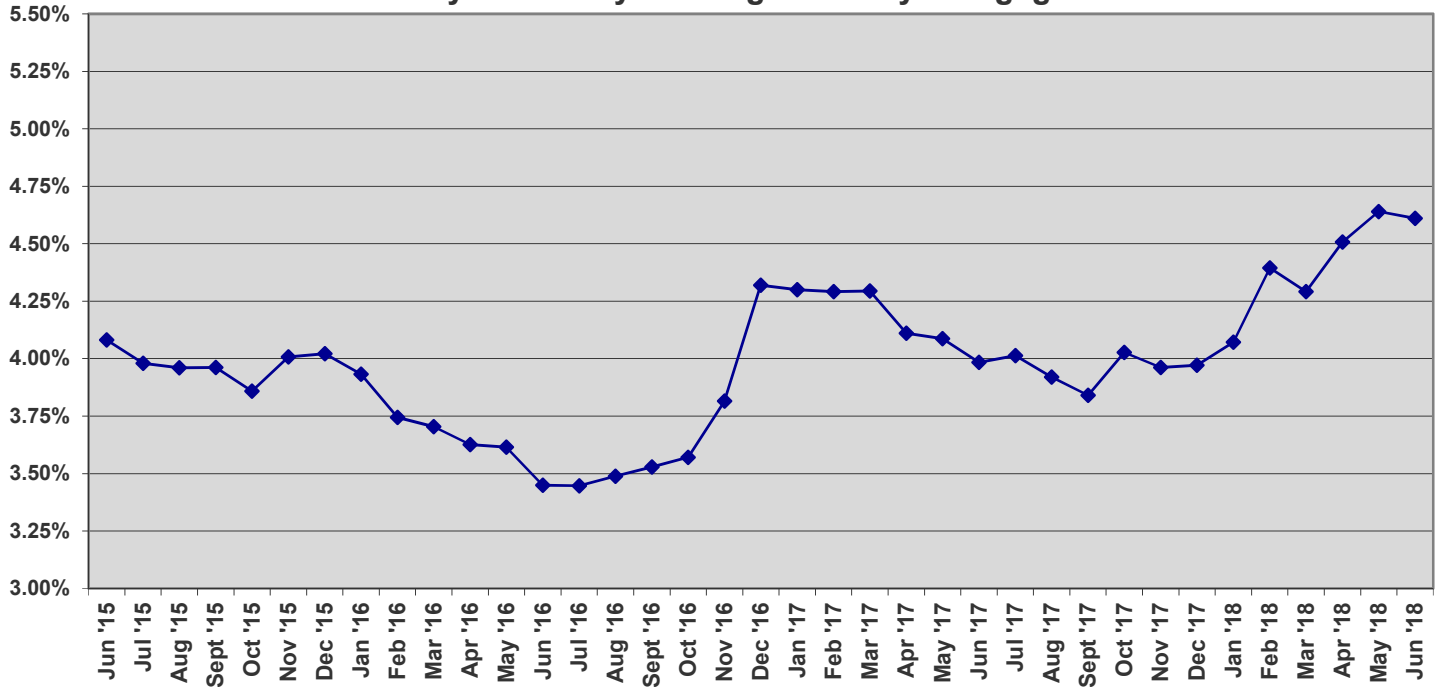




### Average Monthly Mortgage Rate

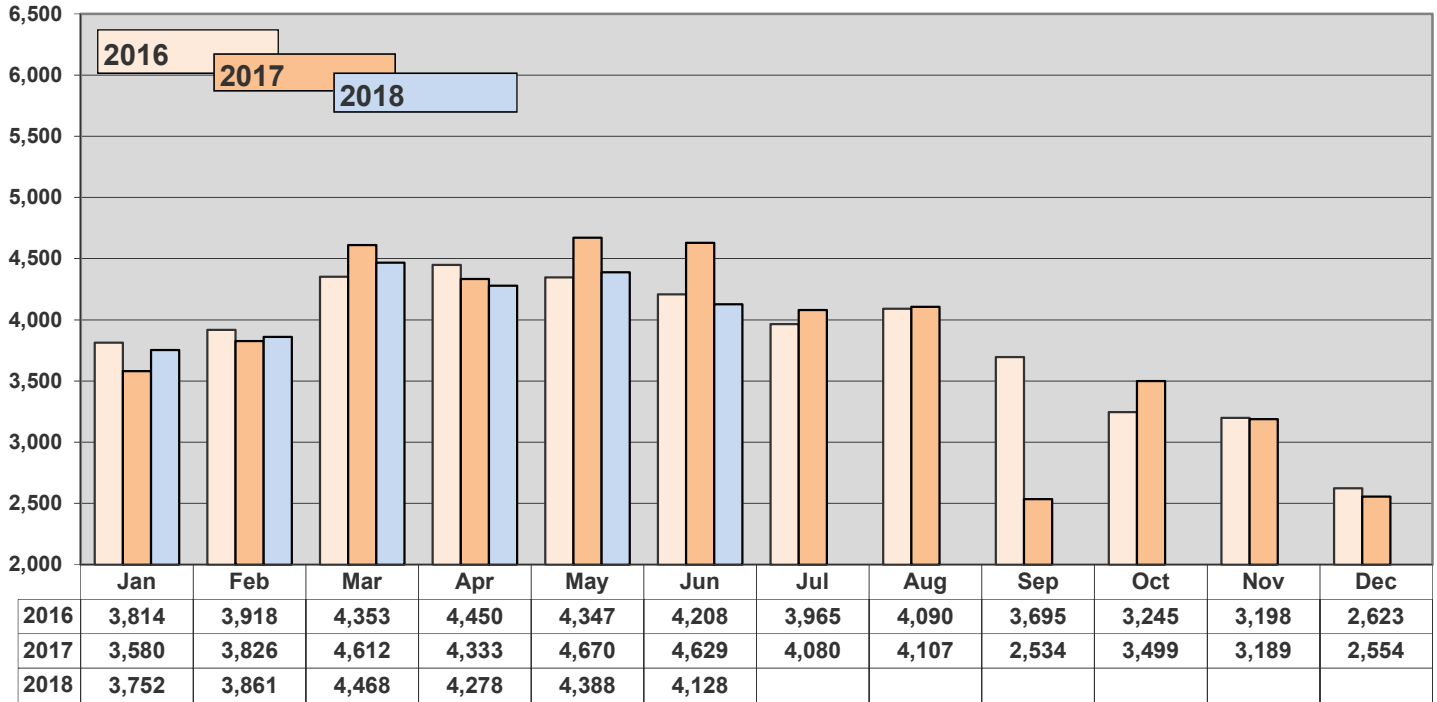


### Three-year History - Average Monthly Mortgage Rate

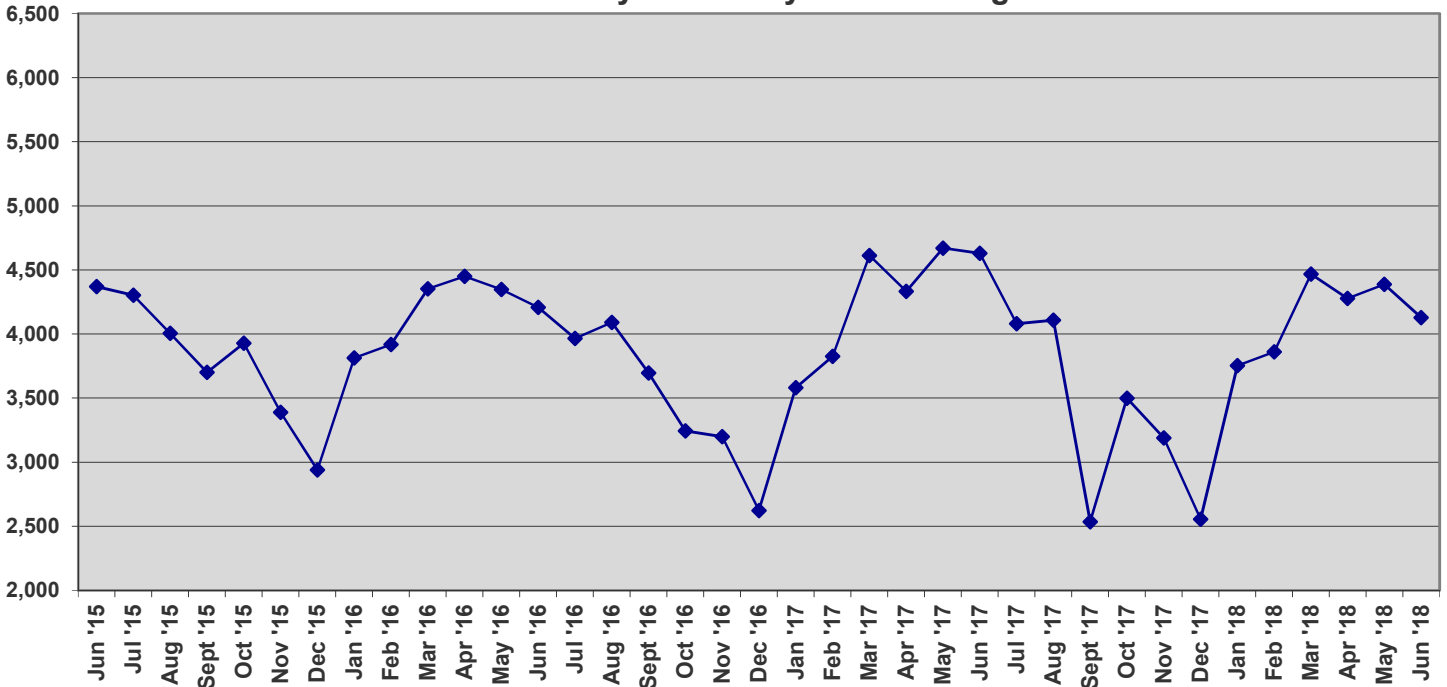




## New Listings

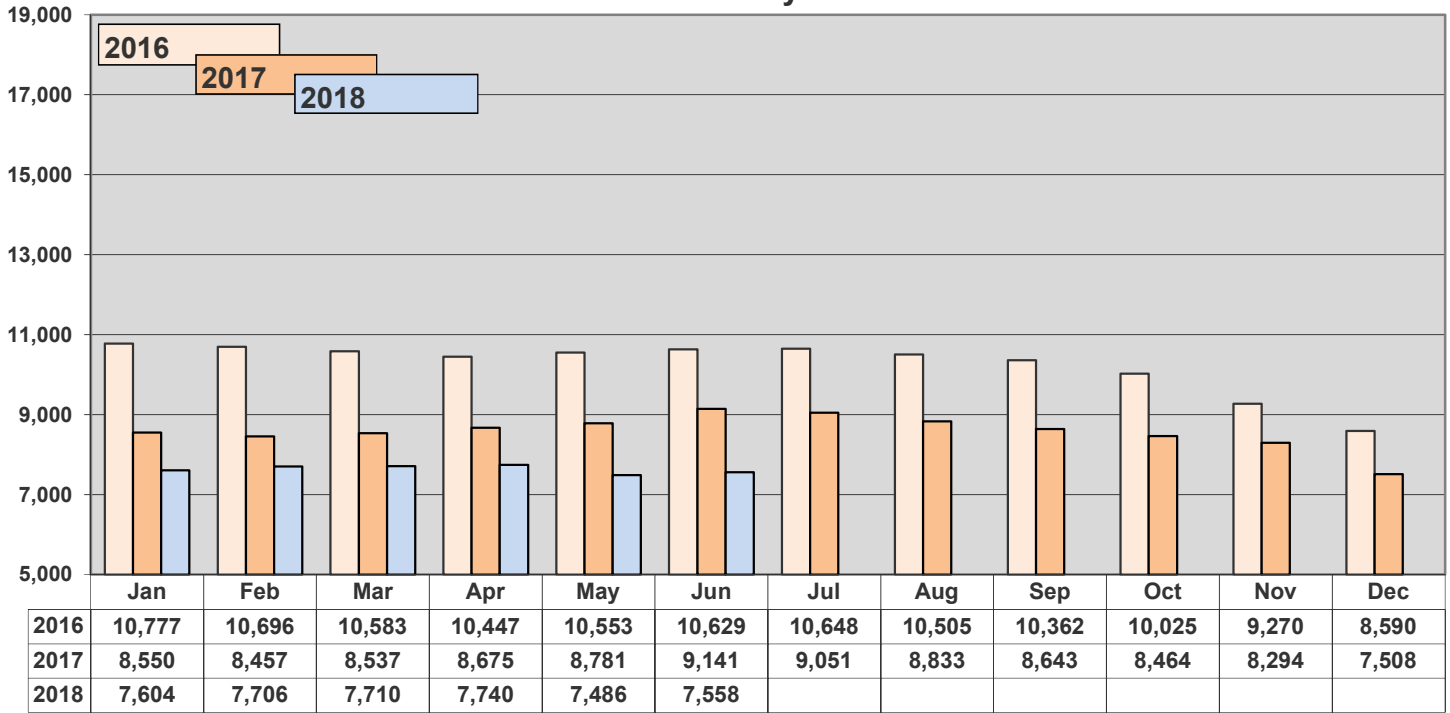


## Three-year History - New Listings

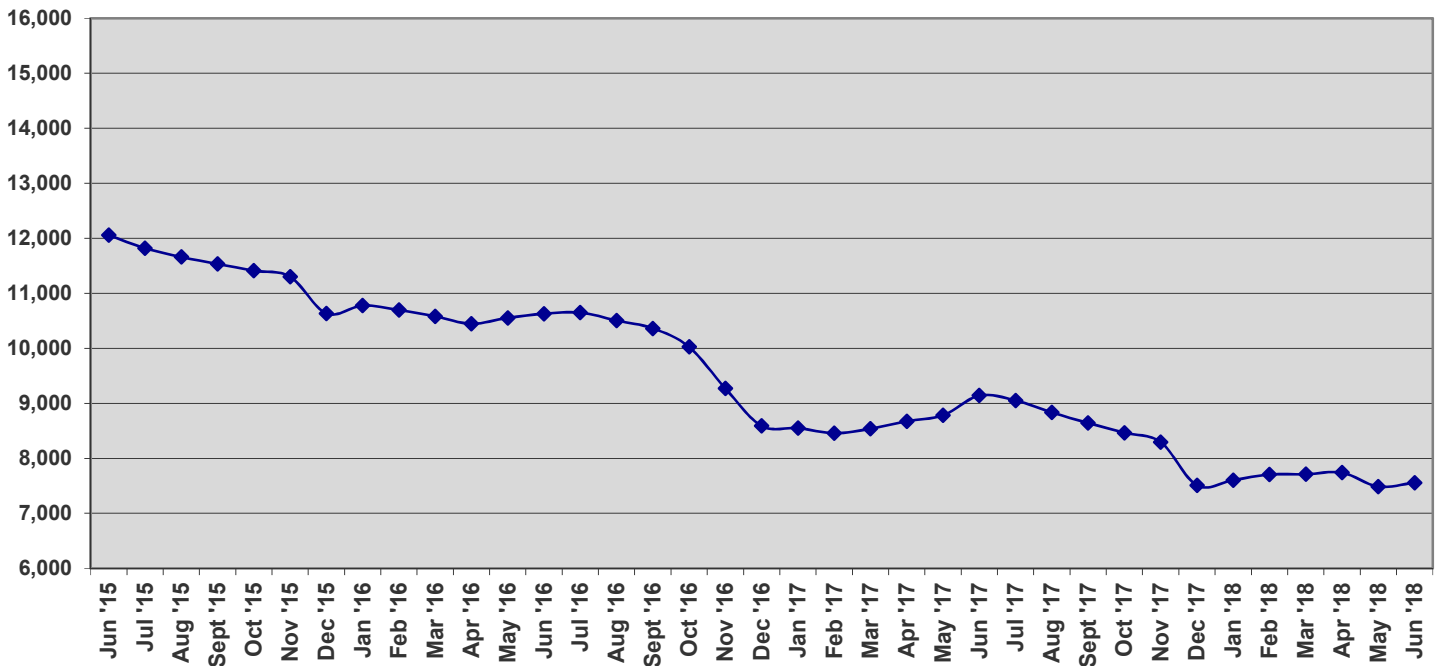




### Inventory

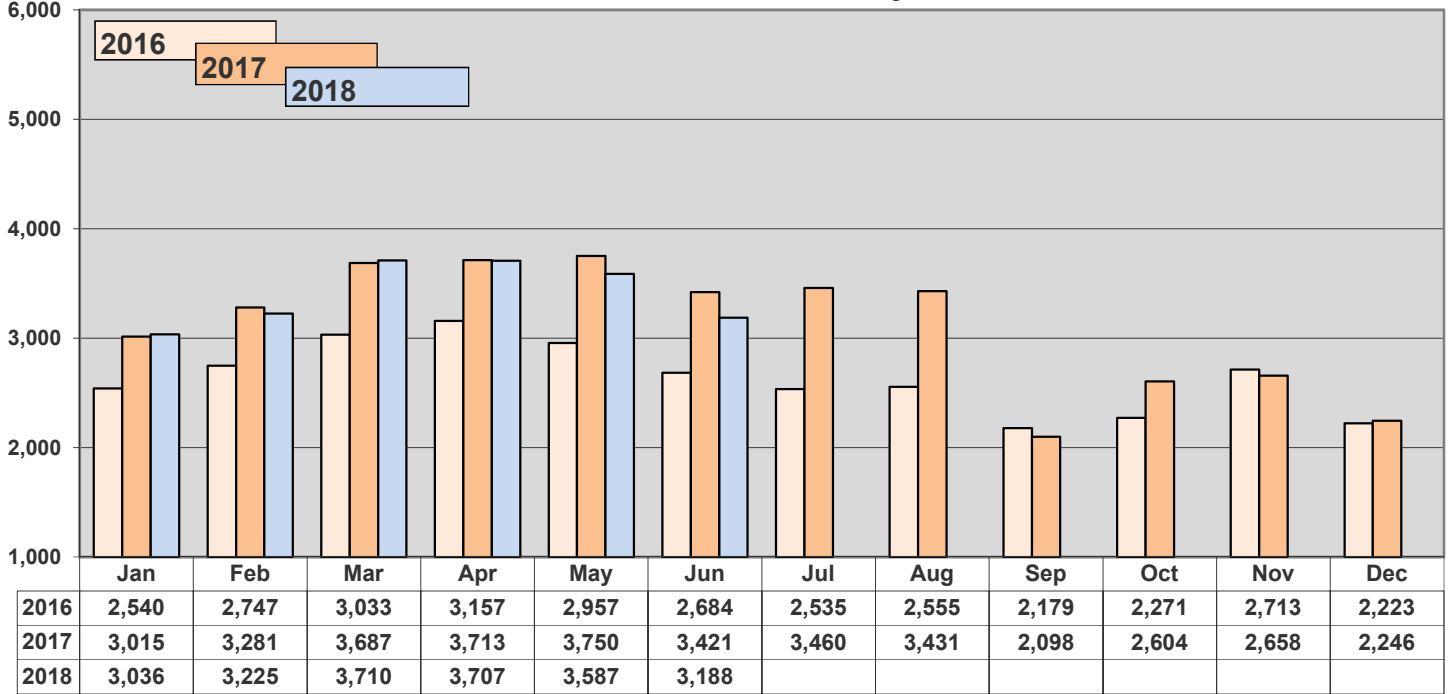


### Three-year History - Inventory

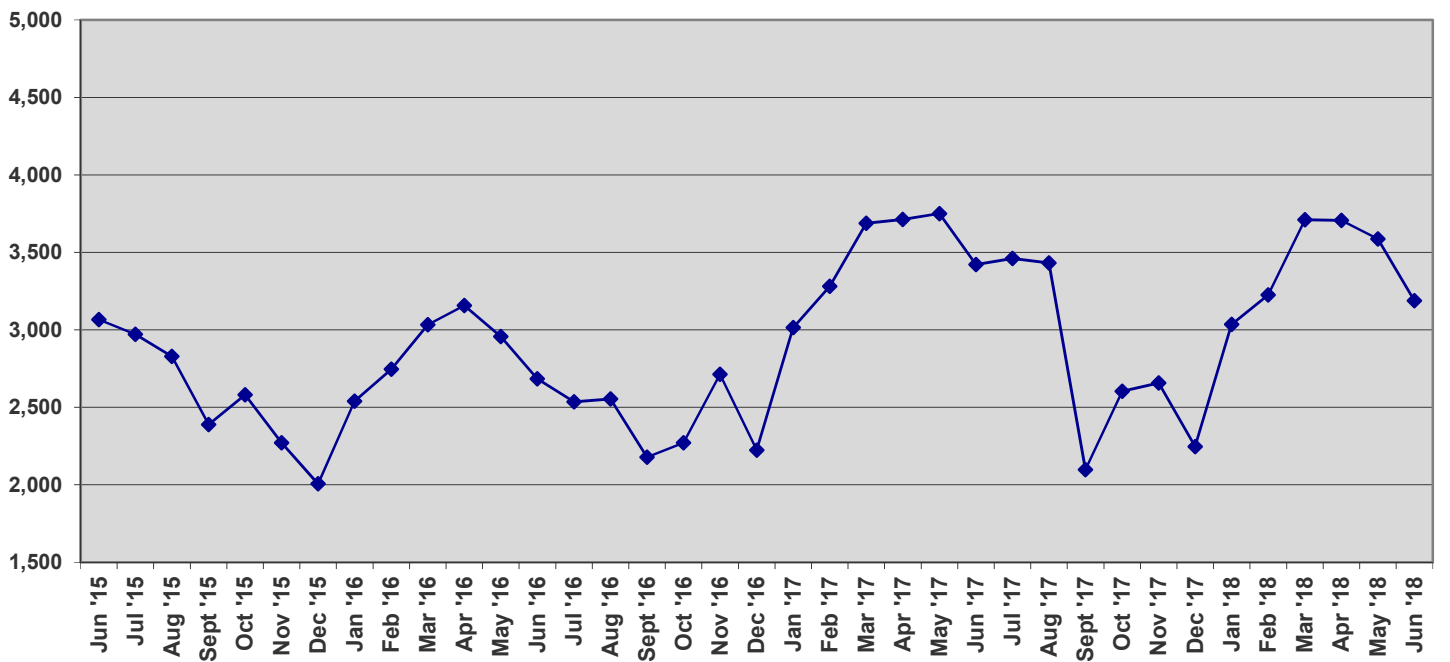




### New Contracts - Monthly

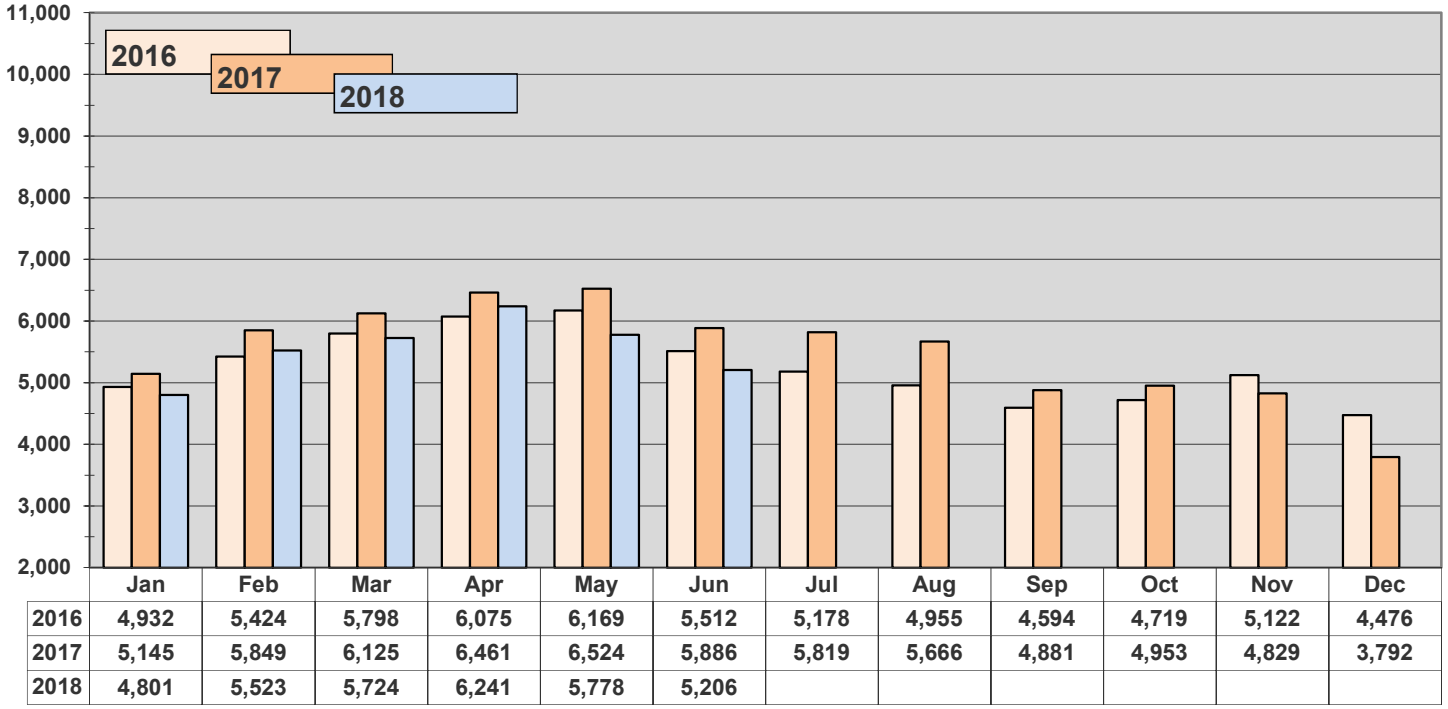


### Three-year History - New Contracts

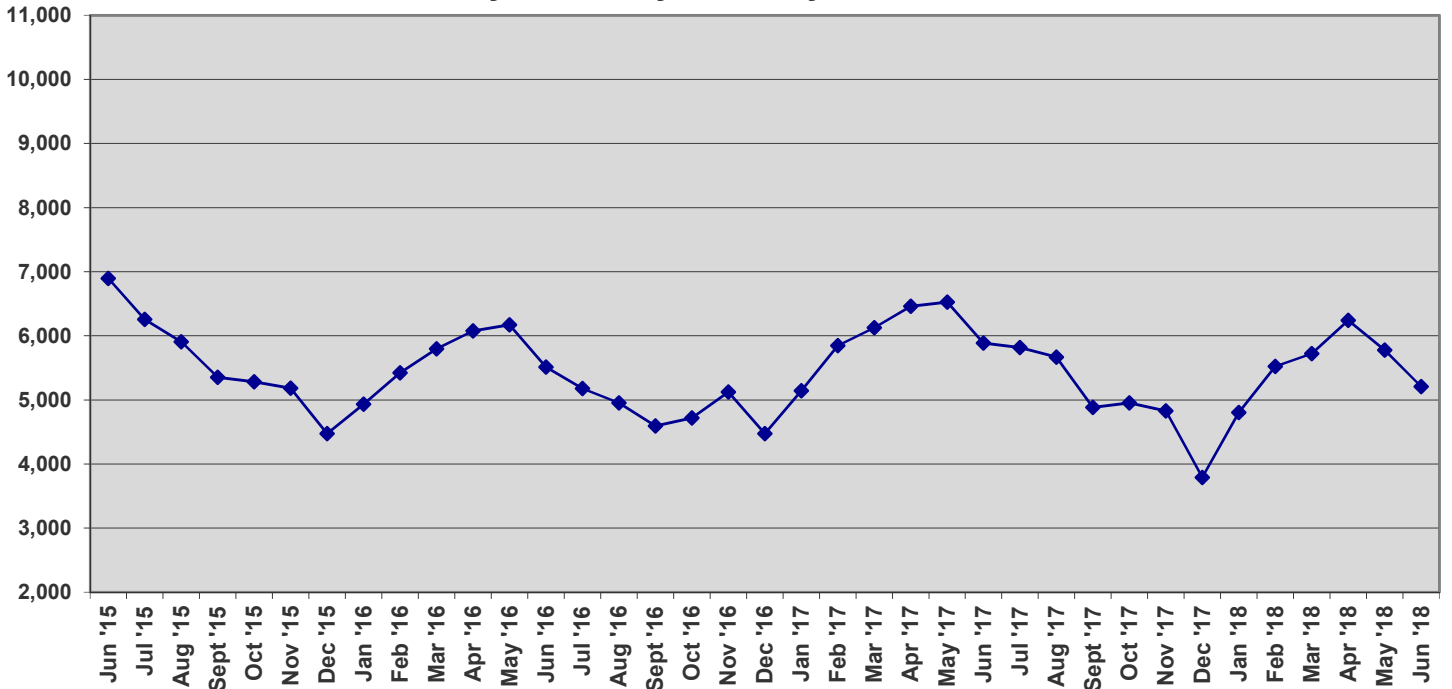




### Total Under Contract

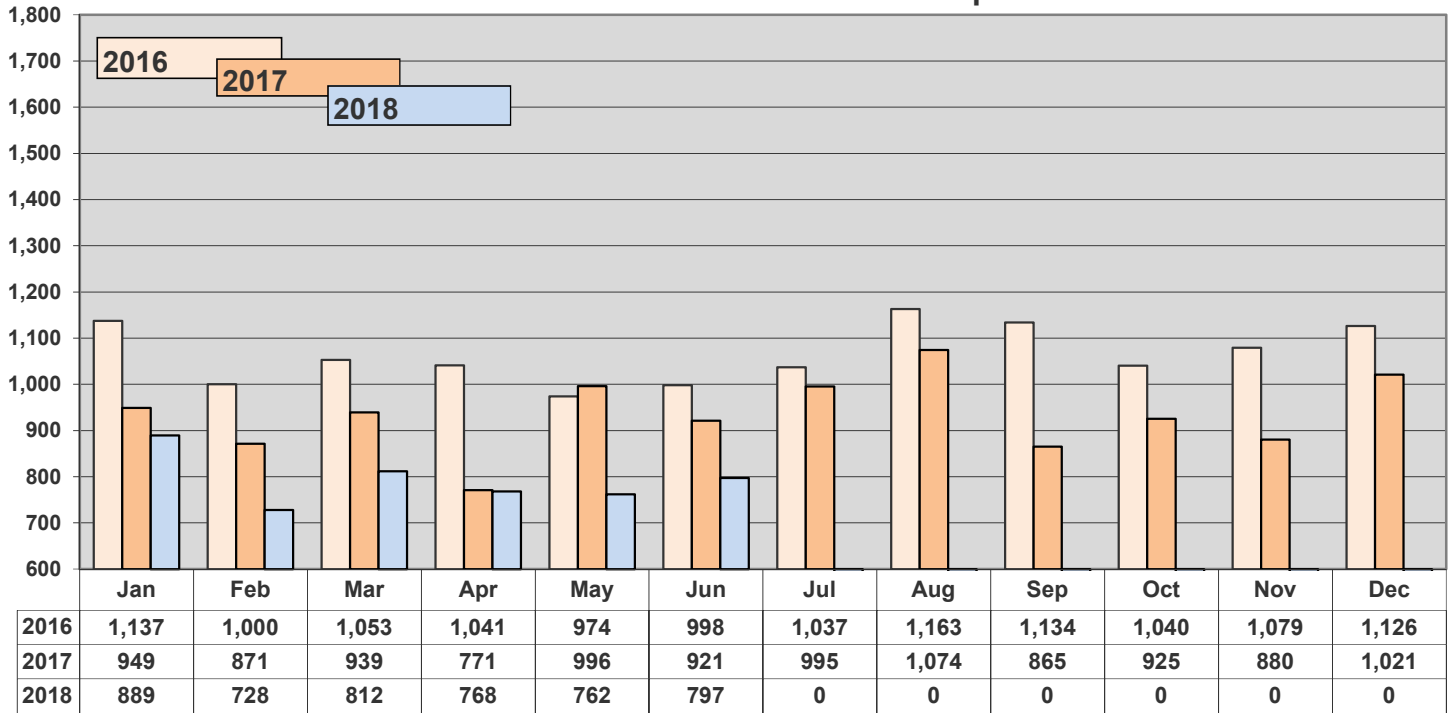


### Three-year History - Monthly Total Under Contract

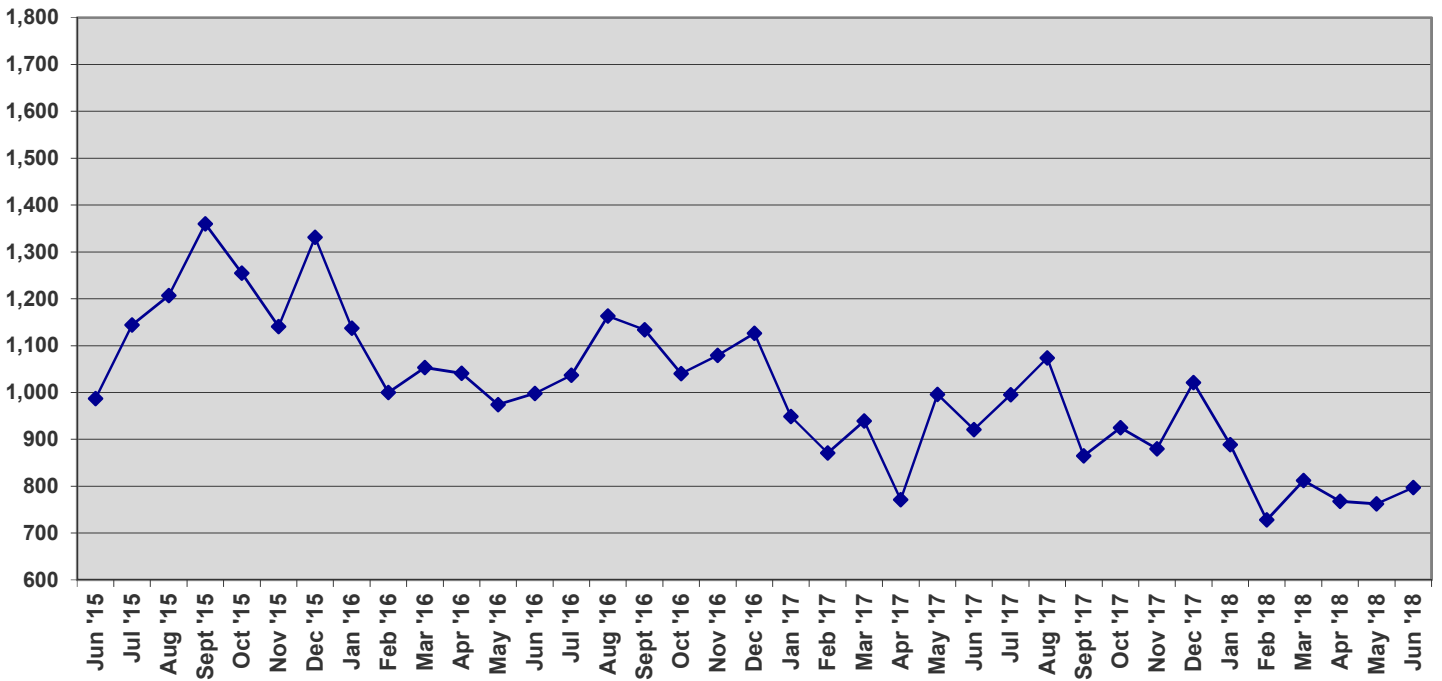




### Units off the Market - Withdrawn or Expired



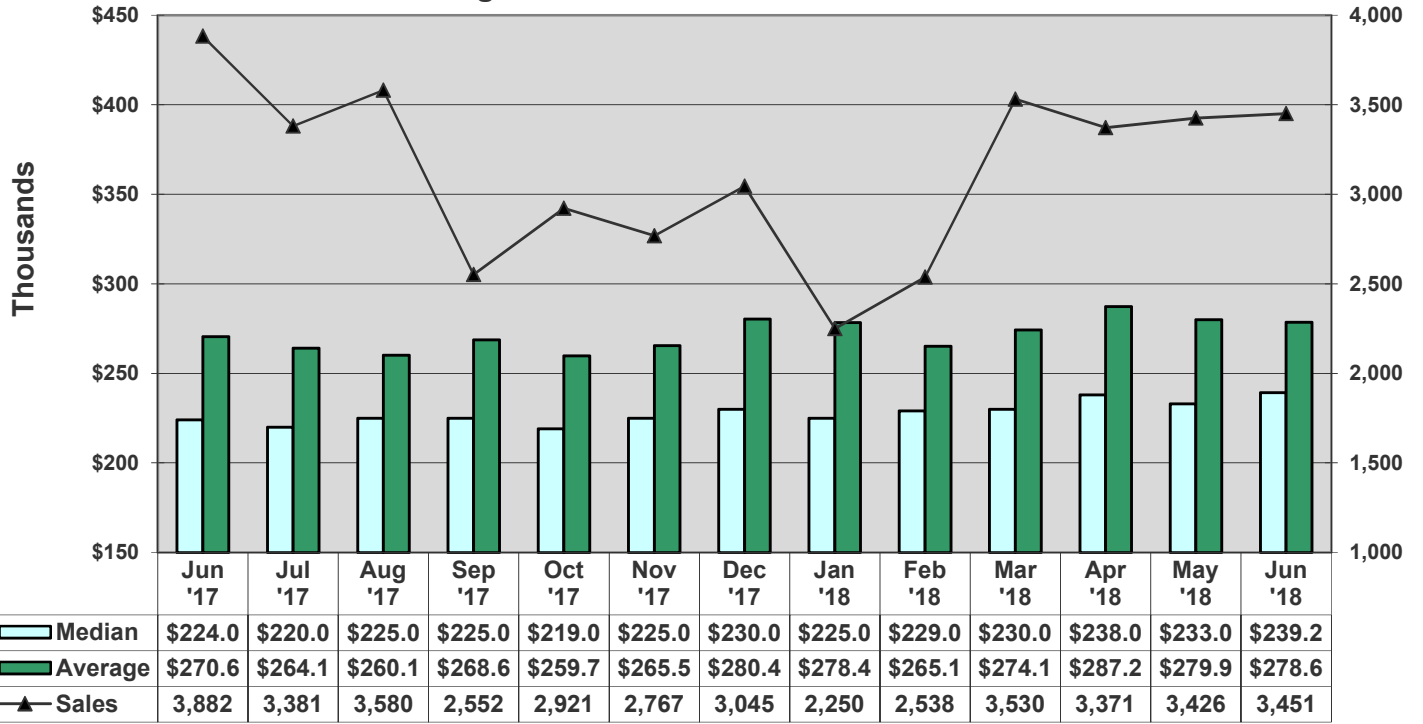
### Three-year History - Units off the Market - Withdrawn or Expired



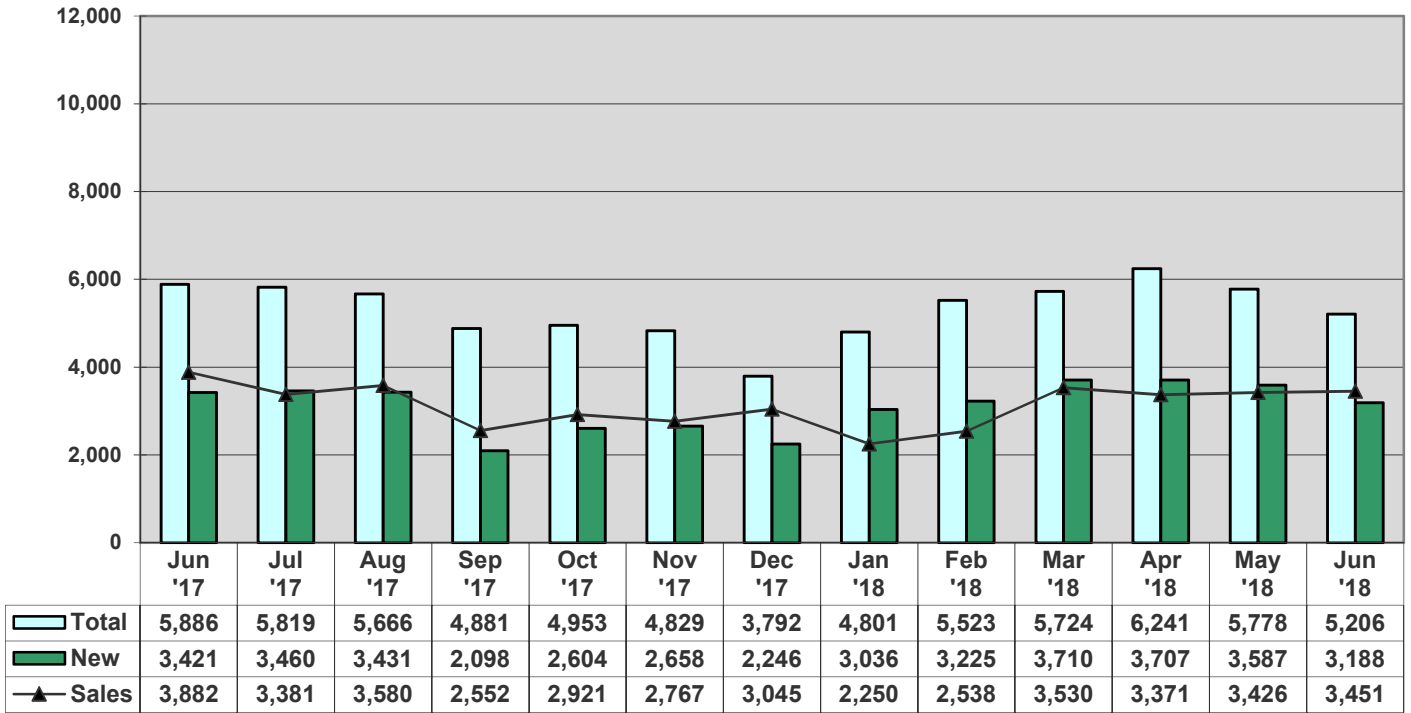




### Average vs Median Sales Price vs Sales

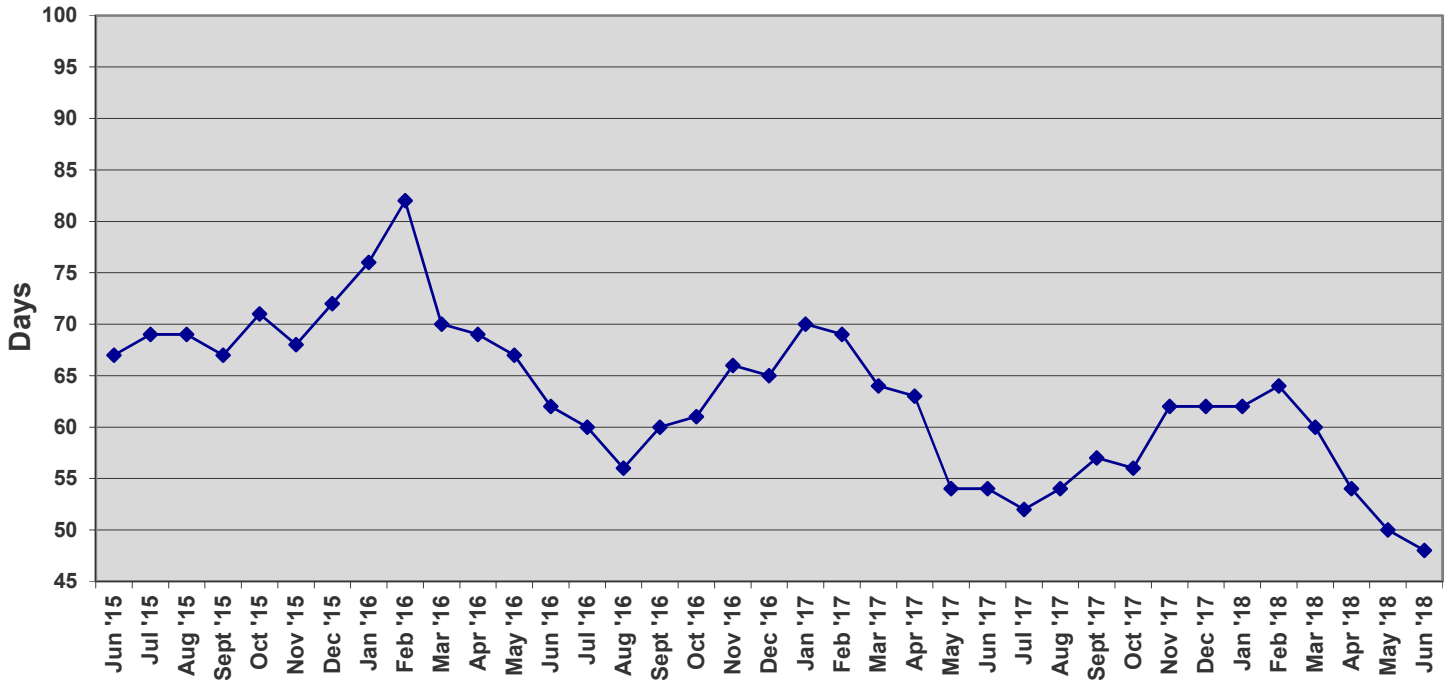


### Total Contracts vs New Contracts vs Sales





### Average Days on Market - Listing to Contract



### Average Days - Contract to Close

