

Census Tract 208.00 (12103020800) – Childs Park (St. Petersburg)

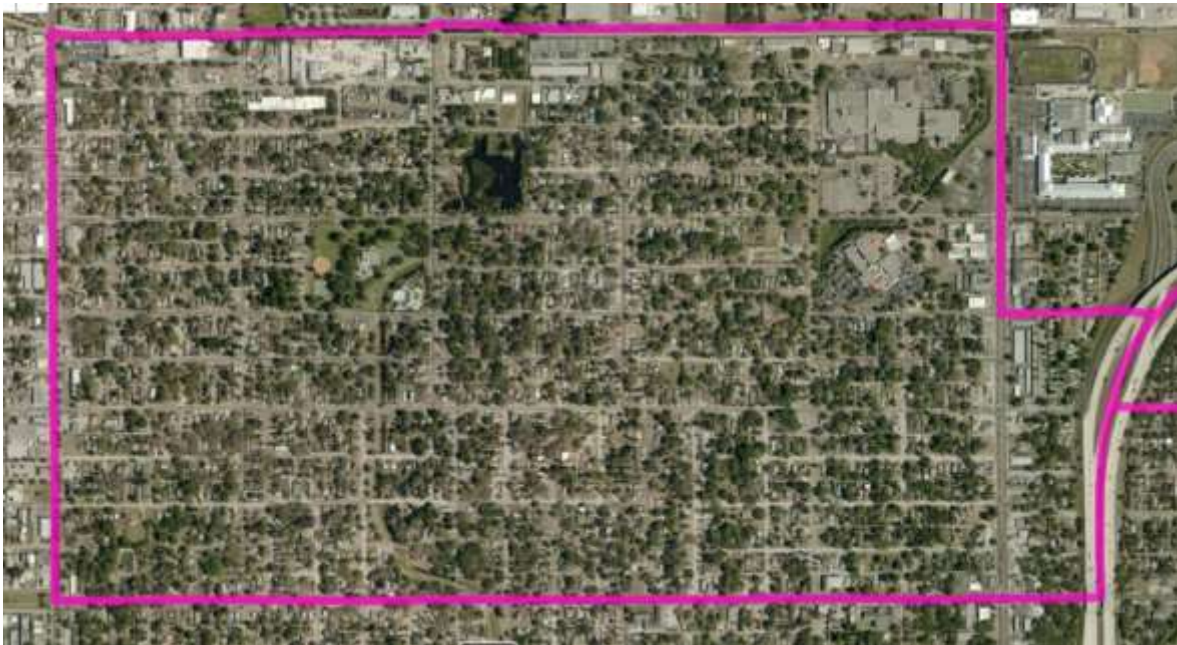
Area (Acres)	Total Population	Housing Units	Median Year Structure Built	% Single family	% Multifamily	Households	Average Household Size	Median Household Income
627	5,313	1,936	1961	93.2%	6.8%	1,610	3.2	\$23,674

Description

The Childs Park Tract is 627 acres of land in the City of St. Petersburg. It is bordered by the Pinellas Trail on the north and 18th Avenue South along the south, and by I-275/34th Street on the east and 49th Street on the west.

Land Use/Zoning

The Future Land Use is almost entirely Residential Medium. There are Industrial land uses bordering the Pinellas Trail on the North, Institutional Uses in the northeast corner, and Mixed-Use Redevelopment on both sides of 34th Street and the east side of 49th Street.



Designations

The entire tract is in the South St. Pete CRA and a reduced mobility fee zone. It is within a Florida designated Brownfield area and Urban Jobs Tax Credit area; and a federal NMTC Higher Distress area and Hub Zone.

General

Single-family residential makes up nearly the entire tract. There are Industrial land uses bordering the Pinellas Trail on the North and on the both sides of 34th Street and 49th Street. Approximately 40 acres in the northeastern corner are home to Pinellas Technical College and Doug Jamerson Elementary School.

Opportunities

Opportunities for redevelopment of aging industrial and commercial uses.

Contact

City of St. Petersburg Economic and Workforce Development: (727) 893-7100, Business@stpete.org