



**Prudential**

Bring Your Challenges<sup>®</sup>

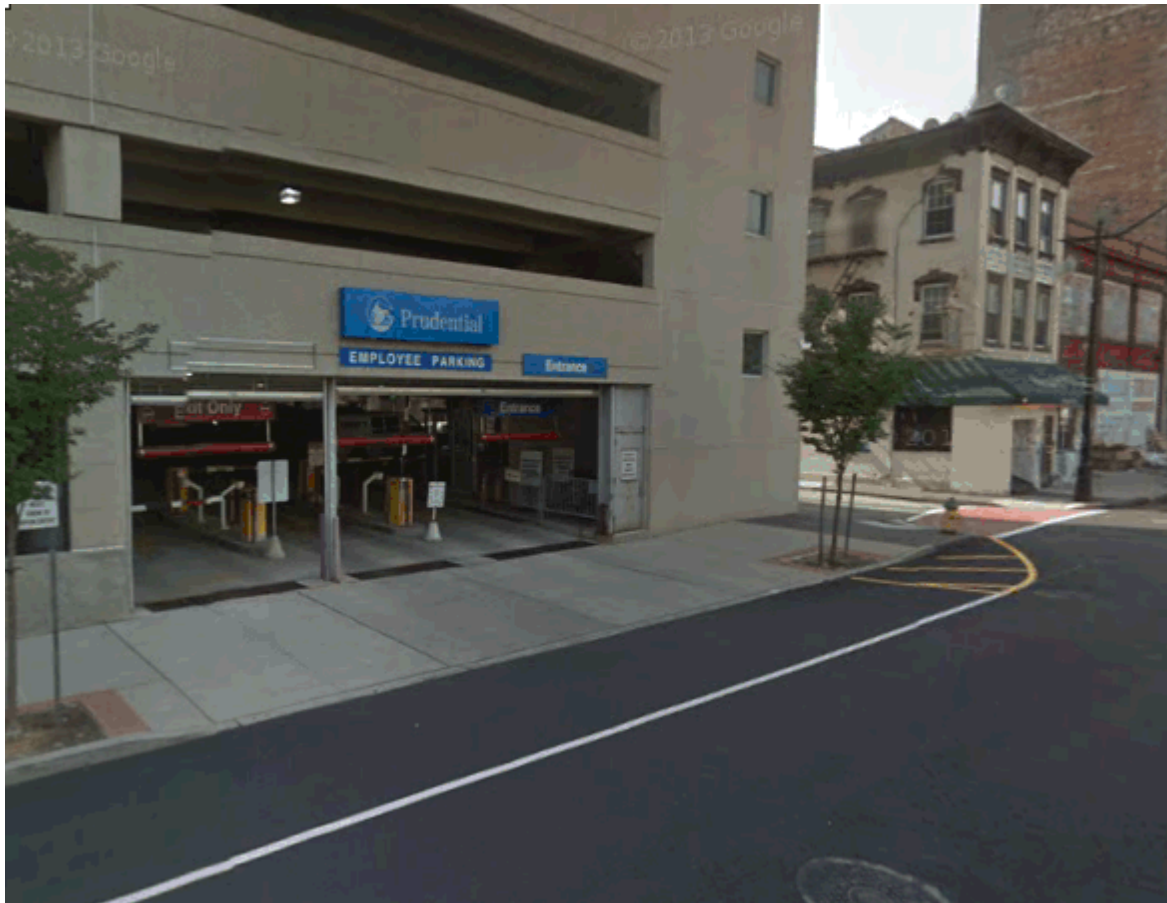
## **PARKING DIRECTIONS**

Please ensure you have photo identification with you

**Parking located in:**

**BANK STREET GARAGE: 223-225 Washington St, Newark, NJ**

## To BANK STREET GARAGE:



### **From Points North via the Garden State Parkway ▾**

Take the Garden State Parkway south to exit 145 (Route 280 East). Take Route 280 east for a couple of miles to Exit 15 (McCarter Highway / Route 21). Go down the exit ramp to the traffic light and go right on McCarter Highway / Route 21 South. Take McCarter Highway / Route 21 for a couple of miles, you will pass Don Pepe's restaurant on your left. Make a right onto Raymond Boulevard, pass Mulberry Street, and go 5 blocks and turn left onto University Ave. Make the second left onto Campbell Street, and another left into the Bank Street Garage. ***Be prepared to show ID.***

### **From Points South via the New Jersey Turnpike ▾**

Take the NJ Turnpike North to Exit 13A (Newark Airport). Follow Route 1 North to Route 21 North (McCarter Highway). Take Route 21/McCarter Highway to Raymond Blvd. Make a left onto Raymond Boulevard, pass Mulberry Street, and go 5 blocks and turn left onto University Ave. Make the second left onto Campbell Street, and another left into the Bank Street Garage. ***Be prepared to show ID.***

### **From Points West via Route 80 ▾**

Take Route 80 east to Route 280 east. Take Route 280 east past the Oranges to Exit 15 (McCarter Highway / Route 21). Go down the exit ramp to the traffic light and go right onto McCarter Highway / Route 21 south. Take McCarter Highway / Route 21 for a couple of miles, you will pass Don Pepe's restaurant on your left. Make a right onto Raymond Boulevard, pass Mulberry Street, and go 5 blocks and turn left onto University Ave. Make the second left onto Campbell Street, and another left into the Bank Street Garage. ***Be prepared to show ID.***

### **From Points West via Route 78 ▾**

Take Route 78 east (local lanes) to Exit 57 (Route 1 and 9 for Newark). Proceed to Exit 58A (Route 21/Downtown Newark). Take Route 21 North (McCarter Highway) approx. 2.5 miles to Raymond Boulevard. Make a left onto Raymond Boulevard, pass Mulberry Street, and go 5 blocks and turn left onto University Ave. Make the second left onto Campbell Street, and another left into the Bank Street Garage. ***Be prepared to show ID.***

### **From Staten Island ▾**

Cross the Goethals Bridge and follow signs to Route 1 & 9 North, or take the NJ Turnpike one exit to Exit 13A. Follow Route 1 North to Route 21 North (McCarter Highway). Take Route 21/McCarter Highway to Raymond Boulevard. Make a left onto Raymond Boulevard, pass Mulberry Street, and go 5 blocks and turn left onto University Ave. Make the second left onto Campbell Street, and another left into the Bank Street Garage. ***Be prepared to show ID.***

### **Once you enter Prudential's property ▾**

After you park, follow signs to the stairwell if not on the ground floor and make your way to the entrance of the garage. Make a left out of the garage, cross the street, and make a right onto Bank Street. Continue walking down Bank Street, the Prudential Plaza building will be on your left. Turn left when you reach Broad Street to reach Prudential's main entrance. ***Check in at the security desk, be prepared to show ID.***

# PRUDENTIAL FINANCIAL - NEWARK COMPLEX

