

July 14, 2020

QRCA DE&I (Diversity, Equity & Inclusion Task Force) Monthly Series: Making Research Accessible to People With Disabilities | Lauren Isaacson, Founder at Curio Research and Glenda Sims, CPWA, Director Of Accessibility Services At Deque

- Session details: <https://www.qrca.org/events/EventDetails.aspx?id=1386946&group=>
- Session recording, resources, and slides: <https://www.qrca.org/Diversity>

*The below resources have been provided by Lauren Isaacson of Curio Research and Glenda Sims, CPWA of Deque. Any reference to a specific product, process, or service does not constitute or imply an endorsement by the QRCA.*

## BY LAUREN ISAACSON

Curio Research 'News and Notes' Research Accessibility Blog Series  
<https://www.curioresearch.net/news-notes/tag/A11y>

## ARTICLE

Isaacson, Lauren and Glenda Sims. "Inclusive Research: Making Research Accessible to People with Disabilities." *QRCA VIEWS*, Spring 2020, <https://qrcaviews.org/2020/03/26/inclusive-research-making-research-accessible-to-people-with-disabilities/>.

## DIGITAL RESOURCES

These can also be accessed at <https://noti.st/curioresearch/xOunCj/inclusive-research-making-research-accessible-to-people-with-disabilities>.

- Strategies For Inclusive Research Design
- Inclusive Recruiting Screener Questions
- Digital Literacy and Information Questionnaire
- Inclusive Research Accommodation Checklist
- Easy Read Consent Form Example



## STRATEGIES FOR INCLUSIVE INCLUSIVE RESEARCH DESIGN

Adapted from National Institute of Health; Diane Rios ScD, Susan Magasi PhD, Catherine Novak RN MS, and Mark Harniss PhD

Recruitment: Presentation of Information	Hearing	Vision	Color Discrimination	Speech	Hand Control	Reading Impairment	Mobility
Large, dark print with ample white background		X	X				
Audio (in person or via video, Internet, or radio)		X				X	
Internet sites compatible with screen readers	X	X				X	X

Recruitment: Mode of Response	Hearing	Vision	Color Discrimination	Speech	Hand Control	Reading Impairment	Mobility
Training staff in TTY and video relay services	X			X			
Allow responses via Internet sites accessible to screen readers	X	X		X		X	
Provide a telephone number for responses		X					

Consent: Presentation of Information	Hearing	Vision	Color Discrimination	Speech	Hand Control	Reading Impairment	Mobility
Sending the consent form before initial meeting to review via accessible files	X			X		X	
Provide consent forms written in plain language, including only essential words, and minimal in length						X	
Consent: mode of response: allow electronic signature, videotaped verbal consent, or proxy consent		X			X		



Accessibility of facility	Hearing	Vision	Color Discrimination	Speech	Hand Control	Reading Impairment	Mobility
Make sure buildings, rooms, equipment (tables, chairs, and examination tables) meet ADA standards		X			X	X	X
Provide height-adjustable tables to accommodate wheelchairs							X

Transportation	Hearing	Vision	Color Discrimination	Speech	Hand Control	Reading Impairment	Mobility
Provide location near accessible public transportation		X			X		X
Provide funding for accessible transportation		X			X		X

Measurement: presentation of information	Hearing	Vision	Color Discrimination	Speech	Hand Control	Reading Impairment	Mobility
Provide captions for audio	X						
Make sure both visual and auditory information can “stand alone”	X	X	X			X	
Provide large print on ample white background		X	X				



Measurement: mode of response	Hearing	Vision	Color Discrimination	Speech	Hand Control	Reading Impairment	Mobility
Allow time for TTY or video relay services for deaf individuals when using telephone surveys	X						
Multiple means of logging a response: using keypad arrows, mouse, track ball, or pad					X		
Large targets on touch screen that do not require dragging		X			X		
Consider tests that are not timed		X		X	X	X	
Make sure colors are not the only way of conveying test information; reduce use of red, green, or blue; use colors with high contrast between each other.			X				

Interventions: presentation of information	Hearing	Vision	Color Discrimination	Speech	Hand Control	Reading Impairment	Mobility
Large print on white background		X	X				
Audio (in person or via video or Internet)		X				X	
Internet sites and word or pdf files compatible with screen readers	X	X				X	X
Interventions: accessible technology: providing technology for interventions that provide multisensory and easy input (e.g., talking watches, pedometers with large displays, electronic diaries that allow for text or voice input)	X	X	X	X	X	X	X



## RECRUITING SCREENER QUESTIONS

Adapted from National Institute of Health; Diane Rios ScD, Susan Magasi PhD, Catherine Novak RN MS, and Mark Harniss PhD

Type	Qualifying Question
General Qualifier	Would you describe yourself as a person with a disability? [yes/no]
Open End	If yes, please define your disability/disabilities?

Type	Question
Specific Qualifier	<p>Does your disability make any of the following tasks difficult? [randomize]</p> <ul style="list-style-type: none"> <li><input type="checkbox"/> Going from place to place</li> <li><input type="checkbox"/> Reading book</li> <li><input type="checkbox"/> Using the internet</li> <li><input type="checkbox"/> Communicating directly with others</li> <li><input type="checkbox"/> Completing household chores</li> <li><input type="checkbox"/> Using smartphone apps</li> <li><input type="checkbox"/> Taking part in civic activities</li> </ul>

Disability	Question
Vision	Can you read typical printed material (e.g., books, pamphlets) with or without glasses?
Hearing	Do you have any difficulty hearing during typical daily conversation?
Fine Motor	Do you have any difficulty using a touchscreen, such as an iPad or tablet?
Mobility	Do you use any assistive devices to get around, such as a walker, cane, or wheelchair?
Color Discrimination	Have you ever been told you are colorblind?



Disability	Question
Speech	Do you have any difficulty speaking so that others can understand you?
Readability	Do you have any difficulties with reading that we should be aware of?

# Questionnaire

Do you have any of these (please circle)?



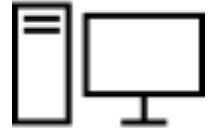
Smartphone



Tablet



Computer you  
can move  
around like a  
laptop



Computer on  
your desk or  
table

---

How do you get information from the NHS (tick the boxes)?



Sent to me by post

YES

NO



Talk to me on the phone



My family members tell me about it



My carer/support worker tells me about it



I go to the GP or hospital

---









Do you get enough information from the NHS?

YES

NO

NOT SURE

# Do you use any of these (tick the boxes)?

		YES	NO	NOT SURE
	NHS England website	<input type="checkbox"/>	<input type="checkbox"/>	<input type="checkbox"/>
	NHS choices website	<input type="checkbox"/>	<input type="checkbox"/>	<input type="checkbox"/>
	Twitter	<input type="checkbox"/>	<input type="checkbox"/>	<input type="checkbox"/>
	Facebook	<input type="checkbox"/>	<input type="checkbox"/>	<input type="checkbox"/>
	YouTube	<input type="checkbox"/>	<input type="checkbox"/>	<input type="checkbox"/>
	Email	<input type="checkbox"/>	<input type="checkbox"/>	<input type="checkbox"/>
	Online shopping websites	<input type="checkbox"/>	<input type="checkbox"/>	<input type="checkbox"/>
	Google search engine	<input type="checkbox"/>	<input type="checkbox"/>	<input type="checkbox"/>

Are there any other websites or apps you use (write in the box below)?





## INCLUSIVE RESEARCH ACCOMMODATION CHECKLIST

Adapted from National Institute of Health; Diane Rios ScD, Susan Magasi PhD, Catherine Novak RN MS, and Mark Harniss PhD

Setting	Done?
Ensure the facility has wide enough hallways, adjustable height tables, accessible bathroom stalls, accessible parking, and convenient access to public transit.	
Provide the option for a quiet room; provide headphones for listening to auditory information (hearing).	
Provide assistance for navigating busy or cluttered areas; clear obstacles to the extent possible (vision, mobility).	
Provide instructions of where to find accessible parking, public transit options, and locations of automatic building entrances.	
Offer to pay for a taxi or ride-share if public transit and driving are not options.	
Mode of Presentation	Done?
Provide or allow sign language interpreter (hearing), Braille technology (vision), screen reader (vision).	
Ask if participants want to bring their own assistive devices and ensure those devices are compatible with the technology you will be using.	
Read information to participant or provide read-aloud technology (vision, reading).	
Provide alternative materials in large print (vision).	
Mode of Response	Done?
Ensure platform is WCAG 2.0 compliant or higher.	
Allow written responses or verbal responses (hearing, vision, hand control).	



Mode of Response	Done?
Allow proxy to log response on paper-and-pencil tests or electronic media, keeping in mind that this may not be a good option for sensitive information (vision, hand control).	
Allow use of a communication device or a familiar friend or relative to accompany participant and serve as “interpreter,” provided the topic is not of a sensitive nature (speech).	
Consult expert on assistive technology (AT) if standard computer input options do not work (e.g., touch screen, mouse, keypad), or allow participant to use own AT (hand control).	
Provide an adaptive intervention that allows alternative ways of engaging in interventions that still preserve essential elements and internal validity (e.g., engaging in upper-extremity exercise in a wheelchair instead of standing).	

Scheduling or Timing	Done?
Be aware that use of accommodations may require more time.	
Participant may fatigue easier, needing sessions divided over several days or frequent breaks.	
Offer scheduling later in day as self-care routine in morning may be extensive.	
Provide flexible scheduling around transportation needs.	
Create priorities in protocol if all testing cannot be completed. Prioritize objectives and questions.	

# Consent form- information



Vita



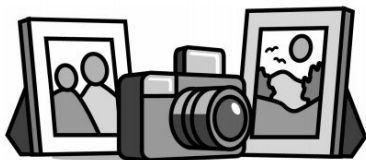
Sammy

Vita and Sammy are from dxw. They are talking to people with learning disabilities about the NHS England website.

---



You do not have to answer any questions you do not like. You can stop talking or leave at any time.



We will take pictures of you. We will share them with you (Thomas will email). You can ask us to delete them. We will show them to NHS England.



We will record what you say.



We will tell NHS England what you think. We will write a report. We will NOT give them your name.



Your pictures, recordings and notes will be kept on the internet in a safe place. It has many passwords and other locks.

# Consent form- your agreement and details

Circle yes if you agree:

---

Vita answered my questions

YES



---

I understand what is going to happen

YES



---

I want to get involved today

YES



---

It's ok to take pictures of me

YES



---

It's ok to record what I say

YES



---

It's ok to share what I say with NHS England

YES



Write your details below:



Write your name



Date