

Recognition Professionals International Business Partnership Program 2020



Platinum

Gold

Silver

Bronze

Friends of RPI

Single Business

At Recognition Professionals International, we make **THANKS** matter!

www.recognition.org



About RPI

RPI, Recognition Professionals International, is pleased to offer year-long partnership opportunities designed to extend value year-round.

It is the mission of Recognition Professionals International to bring awareness, credibility and accountability to employee recognition through a powerful and passionate network of Recognition Professionals. As advocates for positive employee experiences that foster engagement, we share best practices, and provide tools, strategies, thought leadership, education, and professional certification.

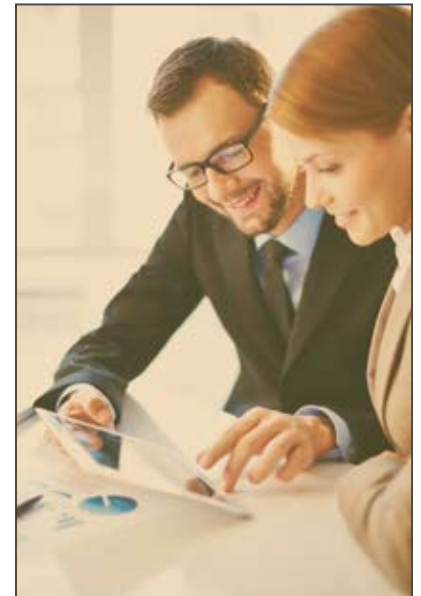
- RPI is the only organization that invites practitioners *and* resource providers as members. This offers you direct access to the same resources as all other RPI members from the day you join.
- RPI offers resource providers access to **more than 1,300** of the leading recognition practitioners in companies based in the United States, Canada, Asia, Europe, and around the world. There is no better forum for you to **build brand-awareness, demonstrate thought-leadership, and connect with recognition decision-makers** than RPI.
- RPI is comprised of a prestigious membership that includes US Fortune 500 companies.
- Sponsorship of RPI sets your company apart as an invested leader in the field of employee engagement and recognition.
- RPI Business Partners helps grow your business, both by establishing credibility and developing the one-to-one relationships with practitioners.
- RPI Business Partners represent the leading names in global recognition resource providers. Participation in the Business Partner Program aligns your company with the most renowned companies in the profession.

RPI Tools

The RPI Annual Conference, Learning Center, Virtual Conference, webinars, website, world class certification program, and networking opportunities are developed by and designed for experienced recognition professionals who want to share their wealth of experience for the advancement of the industry.

With over 1,300 members, RPI is a growing and dynamic community whose ranks are increasing as more recognition practitioners recognize the strategic focus of the association and its members.

The RPI Recognition Learning Center has over 150 white papers, webinars, and best practice resources, as well as online discussion group. These tools are a source for new ideas as well as a method to keep you up to date with current matters facing the industry.



Questions? Contact Jake Nelson at 651-379-7304 or jacobn@recognition.org.

2020 Partnership Levels



Recognition Professionals
International

	Platinum	Gold	Silver	Bronze	Friends*	Single**
Benefits	\$10,000	\$7,500	\$5,000	\$2,500	\$1,000	\$350
Membership/CRP						
# of Memberships for Company	25	15	10	3	2	1
50% off on all 4 Online Regularly Priced CRP Courses for # of staff	20	10	5	3	-	-
30% off one Onsite CRP for 10 Staff Minimum (facilitator fee still applies)	●	●	●	-	-	-
One-Time Use Mailing List of Practitioner Members	●	●	●	-	-	-
Client Gift Annual Memberships (Premium)(50% off after number is met)	10	5	5	5	-	-
Live Virtual Essential Recognition for your clients and staff (2 hours live session - 50 attendees)	2	1	(\$2,500)	(\$2,500)	-	-
On RPI Website						
Level-Sized Logo & Link in 50+ Email Communications	●	●	●	-	-	-
Homepage Sliding Banner	●	●	●	●	-	-
Host and present webinar (content approval required - no sales)	2	1	1	-	-	-
Listing in Resource Provider Directory	●	●	●	●	●	●
Annual Conference						
Table at Resource Fair	FREE	\$500	\$800	\$900	\$1,000	\$1,000
Logo Display Onsite	●	●	●	●	●	-
25% off Registration	4	3	2	1	-	-
Email Promotions						
Emails Each Year Featuring Level with 150 Words & Contact Information	2	1	-	-	-	-
Qualifications						
*Friends of RPI	<ul style="list-style-type: none"> - Eligibility is for companies with less than 10 employees - Up to 2 memberships in RPI - Listing on RPI website for membership year - Free listing in RPI directory - Listing prominently displayed at annual conference 					
**Single Business Partner	<ul style="list-style-type: none"> - Eligibility is for companies with one employee - One RPI membership - Free listing in RPI Directory 					





RPI 2020 Partner Organization Agreement

Contact Name _____

Company Name _____

Address _____

City/State/Postal Code _____ Country _____

Phone _____ Fax _____

Email _____ Website _____

Levels of Sponsorship

Platinum | \$10,000

Gold | \$7,500

Silver | \$5,000

Bronze | \$2,500

Friends of RPI | \$1,000

Single Business | \$350

Method of Payment

Due by January 30, 2020

Total Amount _____

If paying by credit card, all fields are required

VISA MasterCard American Express Discover

Check (payable to Recognition Professionals International)

Card number _____ Exp. Date _____ 3-Digit Sec Code _____

Cardholder Name (print) _____ Cardholder Phone _____

Signature _____

Credit card billing address _____ Same as above

Street Address _____

City/State/Postal Code _____

Country _____

Due to PCI Compliance, please do NOT provide any credit card information via email. Call or fax it in only

Mail or Fax with Payment to:

Recognition Professionals International
1000 Westgate Drive, Suite 252 | St. Paul, MN 55114, USA
Phone 651.290.7490 | Fax 651.290.2266 | Email logos to jacobn@recognition.org

(For office use only)	
initials	fin.
date	
CK/CC	
amt. paid	
bal. due	

Questions? Contact Jake at jacobn@recognition.org or 651-379-7304.

**Please see the previous two pages to ensure your organization satisfies the eligibility requirements.*

**All Business Partnerships are nonrefundable.*

Please attach a list of members based on partner level, including name, email and phone.